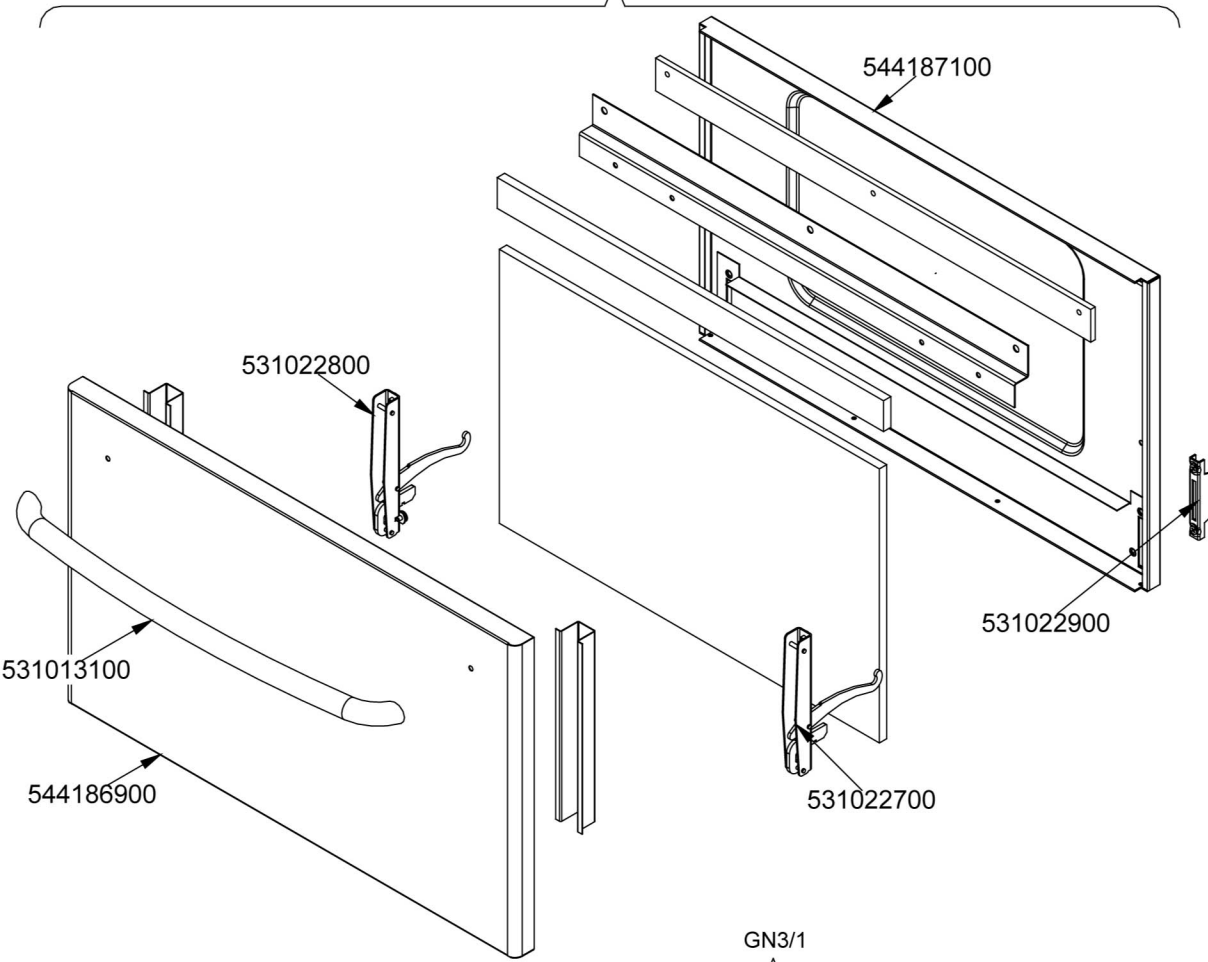
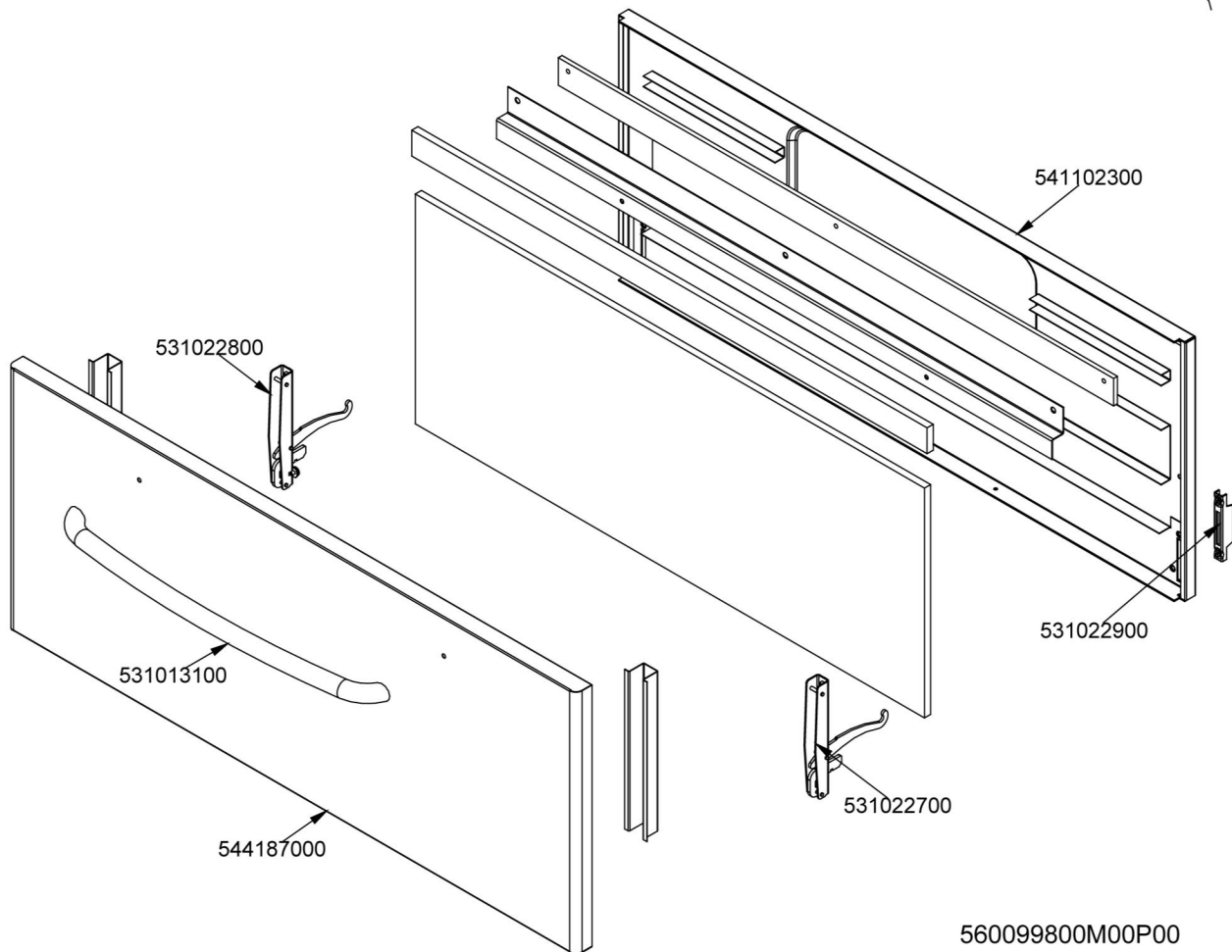


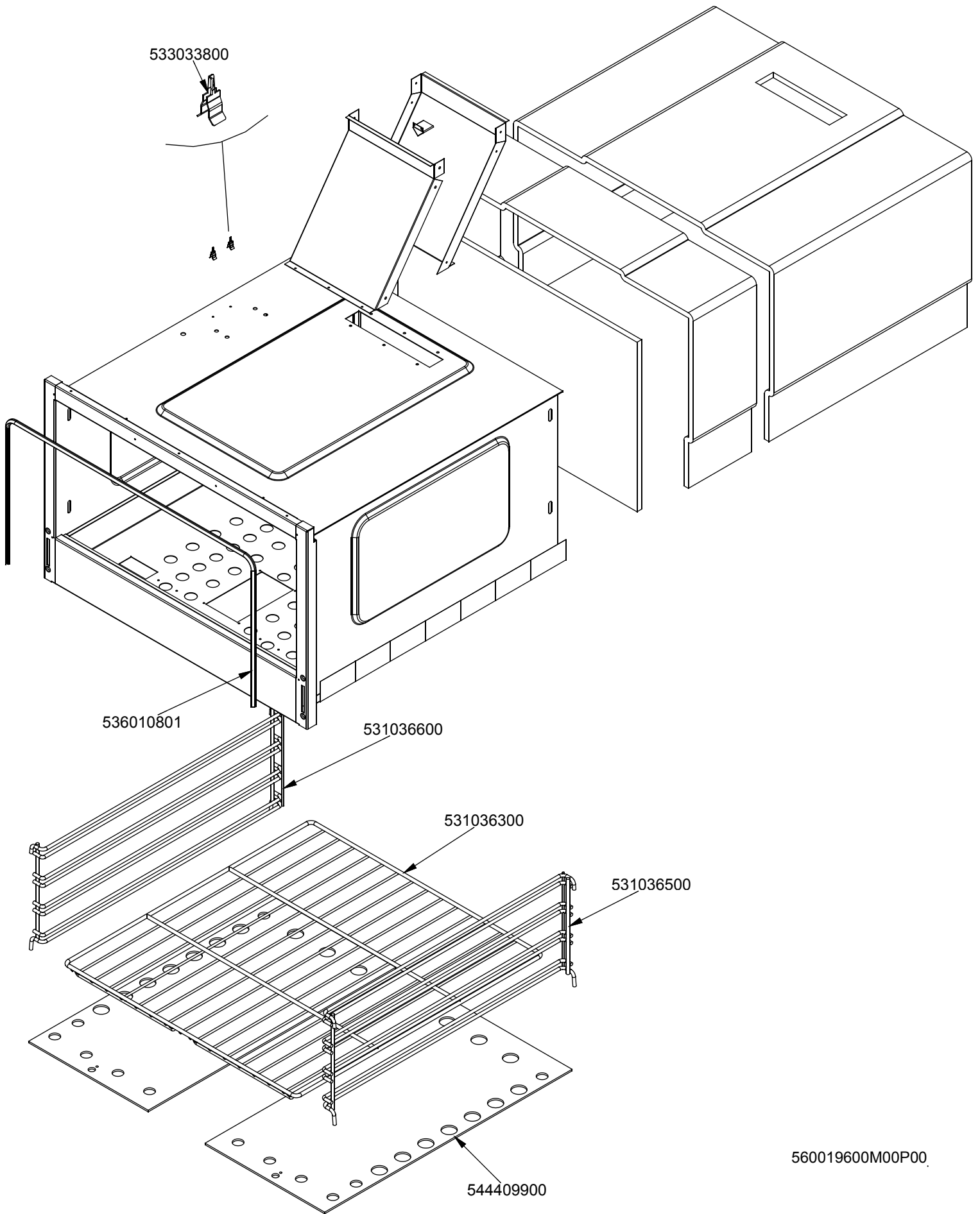
GN2/1

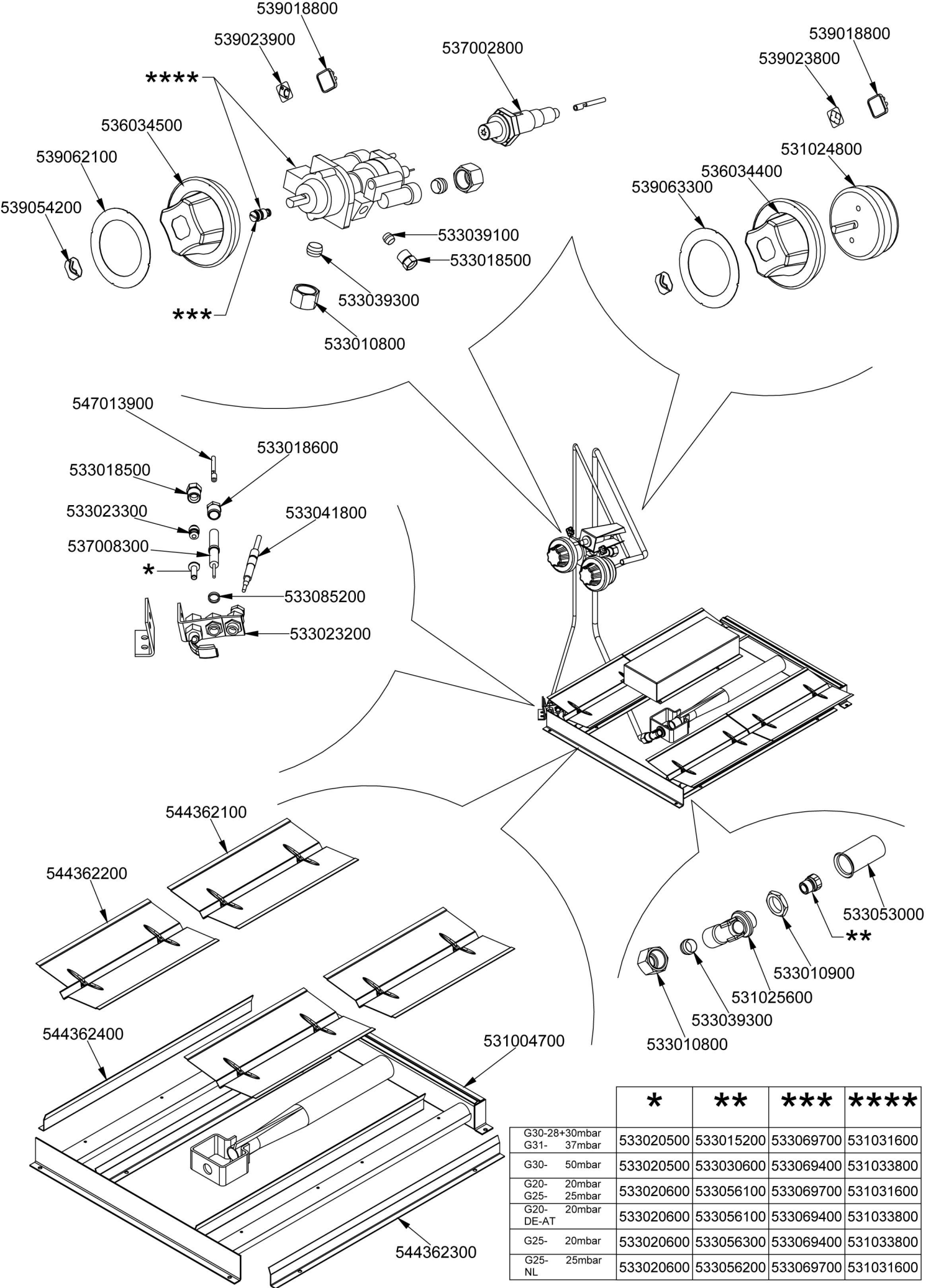


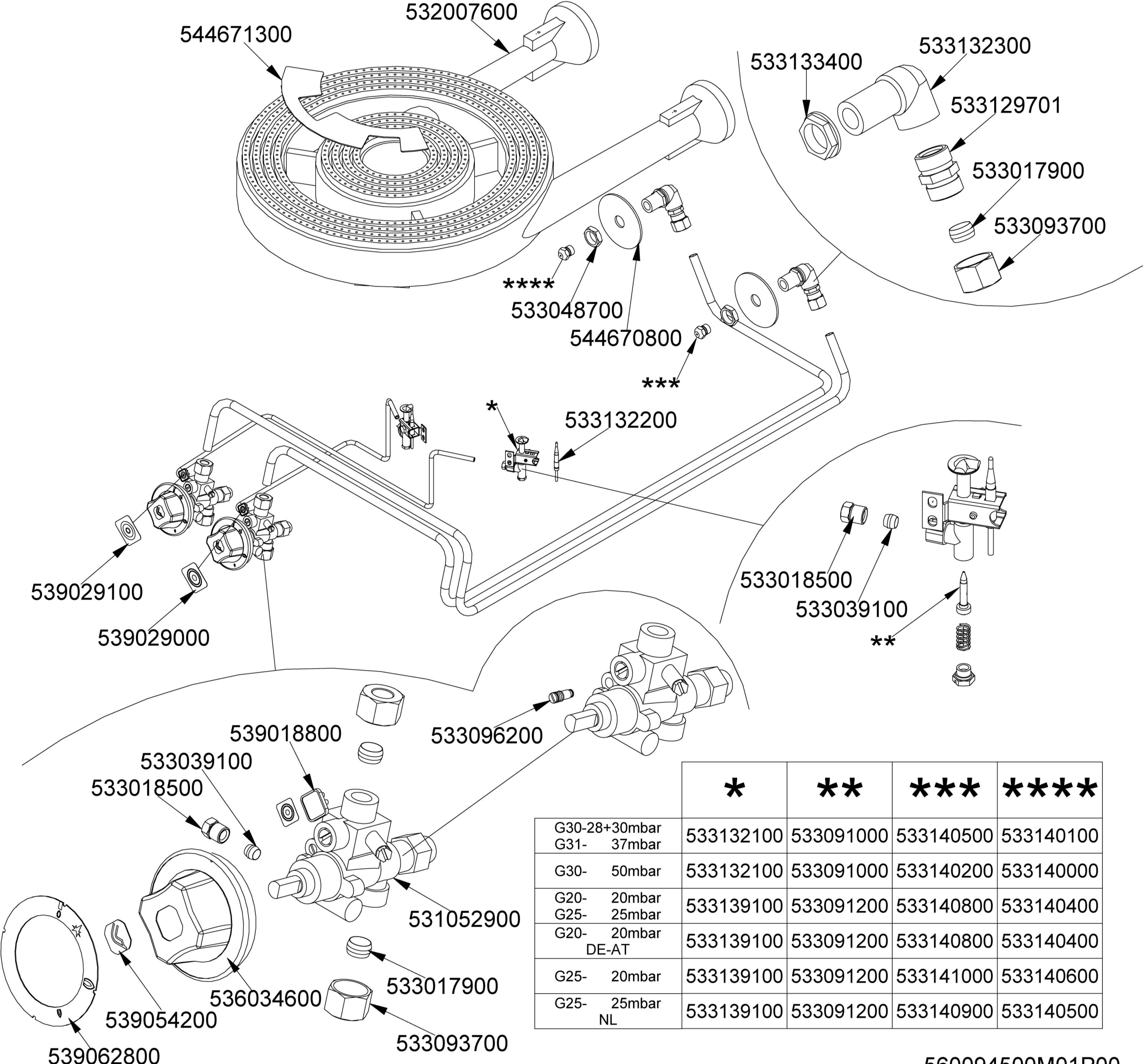
GN3/1



560099800M00P00







544671300

532007600

533133400

533132300

533129701

533017900

533093700

533048700

544670800

*

533132200

539029100

539029000

533018500

533039100

**

539018800

533096200

533039100

533018500

531052900

536034600

533017900

539054200

533093700

539062800

	*	**	***	****
G30-28+30mbar G31- 37mbar	533132100	533091000	533140500	533140100
G30- 50mbar	533132100	533091000	533140200	533140000
G20- 20mbar G25- 25mbar	533139100	533091200	533140800	533140400
G20- 20mbar DE-AT	533139100	533091200	533140800	533140400
G25- 20mbar	533139100	533091200	533141000	533140600
G25- 25mbar NL	533139100	533091200	533140900	533140500

560094500M01P00

Page	Pos	Code	Description
001		532004100	FLUE GRID L=370 90LINE (RAF
001		531063500	1 BURNER GRID FOR PA-900
001		541156800	BURNER DRIP PAN OF S90 PA-98G
001		541118100	UPPER PLATE TP-98G TPF-98G
001		544407200	RIGHT SIDE PANEL RANGE 70 LINE
001		541196400	CONTROL PANEL S90 PAF-98G
001		537002800	PIEZOELECTRIC IGNITION M18 WITH NUT
001		544407100	RIGHT SIDE PANEL RANGE 90 LINE
001		536005200	INOX LEG 2" 120-180 M10
002		544187100	OVEN INNER DOOR GN 2/1 70/90LINE
002		531022800	LEFT OVEN DOOR HINGE S.70
002		531013100	OVEN DOOR HANDLE OF 70/90-LINE
002		544186900	OVEN DOOR GN 2/1 70/90LINES
002		531022700	RIGHT OVEN DOOR HINGE 70LINE
002		531022900	HINGE DOOR WHEEL HOLDER S.70
002		541102300	GAS OVEN INNER DOOR GN 3/1 S.70
002		544187000	OVEN DOOR GN 3/1 S.70
003		533033800	LOCK SPRING FOR BULB §6
003		536010801	OVEN GASKET GN 2/1 (1308
003		531036600	LHD RACK HOLDER FOR OVEN S.90
003		531036300	OVEN RACK GN 2/1 FOR 90 LINE
003		531036500	RHD RACK HOLDER FOR OVEN S.90
003		544409900	90 GAS OVEN BOTTOM GN2/1
004		539018800	BLANK INDEX FOR KNOB
004		539023900	SIGN PLATE FOR OVEN TEMPERATURE
004		536034500	KNOB §77 4P. §08*6,5
004		539062100	ADESIVE DISK FOR GAS OVEN S70
004		539054200	STAMP O20,5 CR."L" LOTUS R.
004		533010800	TUBE NUT D.10 M16*1,5
004		533039300	BICONE §10
004		533018500	FITTING FOR BICONE D.6 M10*1
004		533039100	BICONE §6
004		537002800	PIEZOELECTRIC IGNITION M18 WITH NUT
004		539063300	ADESIVE DISK FOR TYMER GREY
004		536034400	KNOB §77 4P. §06*4,6 C/M
004		531024800	TIMER 120'- 360°
004		539023800	LABEL FOR OVEN TIMER
004		547013900	HIGH-VOLTAGE CABLE TUB.§2 L=1400
004		533018600	PLUG FITTING
004		533023300	BICONE §6 ("TARGET" PILOT
004		533041800	THERMOCOUPLE 1500 M9*1
004		537008300	ROUND PLUG §2,4- LONG ELECTRODE
004		533085200	SPACER FOR PILOT PLUG
004		533023200	TARGET PILOT + NIPPLE TC BRAC.90°
004		544362100	UPPER BURNER DEFLECTOR FOR OVEN 70
004		544362200	UPPER PILOT DEFLECTOR FOR OVEN 70
004		544362400	SIDE PILOT DEFLECTOR FOR OVEN 70
004		544362300	SIDE BURNER DEFLECTOR FOR OVEN 70
004		531004700	BURNER FOR OVEN GN 2/1 S.70
004		531025600	ELBOW 90° NOZZLE-HOLDER §10 PIPE
004		533010900	NUT M14*1 H.4

Page	Pos	Code	Description
004		533053000	AIR ADJUSTMENT BUSHING §18
004		533020500	NOZZLE 0.140 §19
004		533020600	NOZZLE 0.140 §27
004		533015200	NOZZLE §145 CH12*14 F-FP/CP6
004		533030600	NOZZLE §125 CH12*14
004		533056100	NOZZLE §220 CH12*14
004		533056300	NOZZLE §240 CH12*14
004		533056200	NOZZLE §230 CH12*14
004		533069700	BY PASS COCK §075 25ST
004		533069400	BY PASS COCK §065 25ST
004		531031600	HORIZON.THERMOSTATIC TAP BY-PASS 75
004		531033800	HORIZON.THERMOSTATIC TAP BYPASS §65
005		533132300	
005		533133400	
005		532007600	
005		544671300	
005		533048700	NUT 1/2G ZN
005		544670800	
005		533129701	FITTING M20X1,5 PIPE Ø12 PA
005		533017900	BICONE D.12
005		533093700	HEXAGONAL NUT M20X1,5
005		533132200	
005		539029100	ADHESIVE LABEL EXTER.RING PA S90
005		539029000	ADHESIVE LABEL INNER RING PA S90
005		533018500	FITTING FOR BICONE D.6 M10*1
005		533039100	BICONE §6
005		533096200	
005		539018800	BLANK INDEX FOR KNOB
005		539062800	RED STICKING DISK 72
005		539054200	STAMP Ø20,5 CR."L" LOTUS R.
005		536034600	KNOB §77 4P. §10*8
005		531052900	
005		533132100	PILOT 0100 2F
005		533139100	PILOT 0100 2F
005		533091000	NOZZLE 0.100 §20
005		533091200	PILOT NOZZLE 0100 Ø35 PIL.PC
005		533140500	NOZZLE CH16*21 §215
005		533140200	NOZZLE CH16*21 §190
005		533140800	NOZZLE CH16*21 §320
005		533141000	NOZZLE CH16*21 §350
005		533140900	NOZZLE CH16*21 §330
005		533140100	NOZZLE CH16*21 §140
005		533140000	NOZZLE CH16*21 §125
005		533140400	NOZZLE CH16*21 §210
005		533140600	NOZZLE CH16*21 §225