

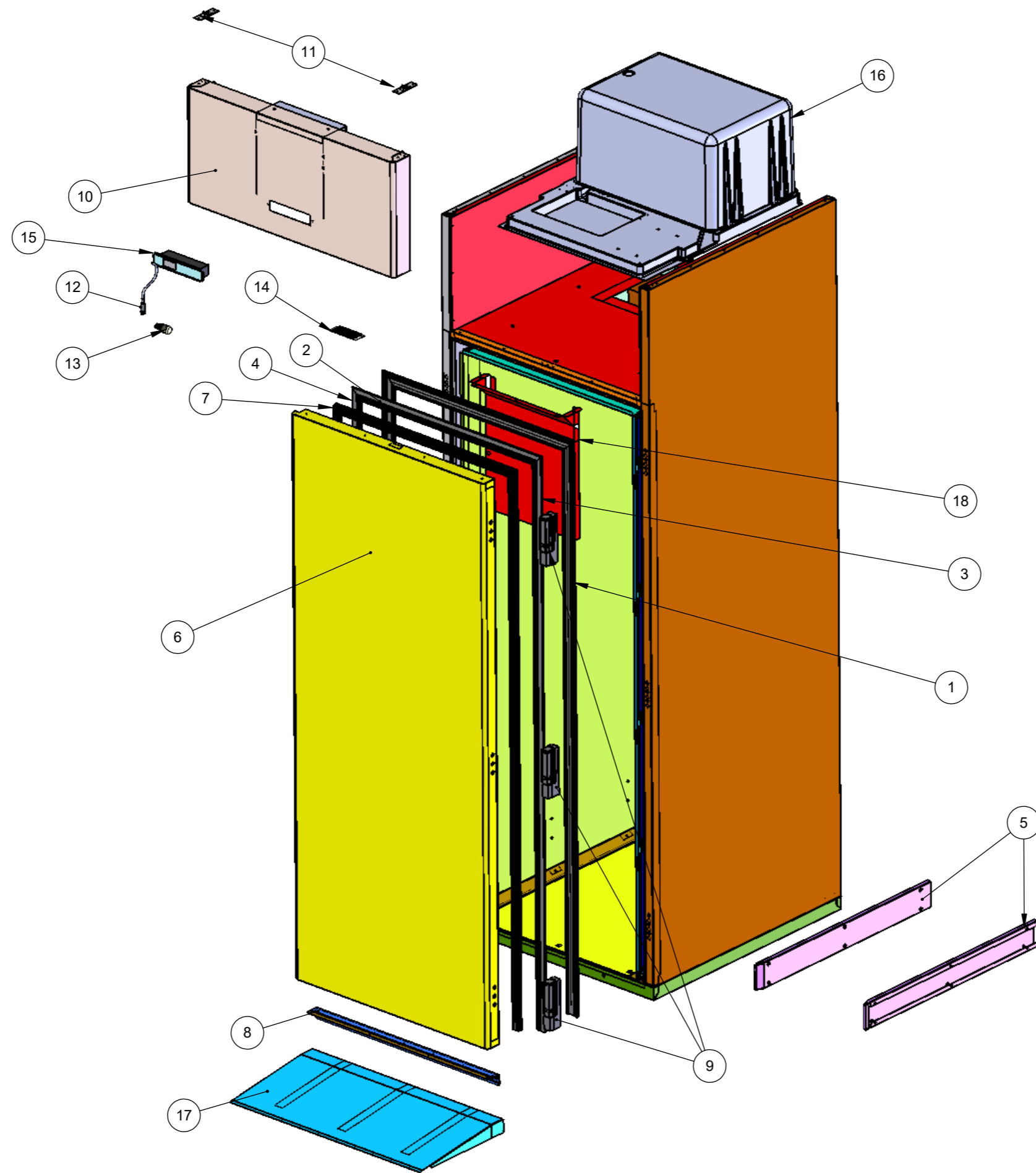


Kühlung Einfahrtiefkühlschrank

Artikel-Nr.
90624012 (KKG1000*L01 / SLIM LINE)

Explosionszeichnung / Ersatzteile

Bitte bei Ersatzteilbestellung immer Artikelnummer und Seriennummer mit angeben!



MODELLO

DESCRIZIONE

ROLL-IN MONOSCOCCA "KKG1"

ROLL IN SLIM

KKG1000 - components of the Monoblock - IMAP

UNSDM007Z011 (TN) NORMAL TEMPERATURE				
POS	CODE	DESCRIPTION		
a	RR000323	COMP.ASPERA R404A 4,5CC V.220-240/1/50	COMPRESSOR	
b	RR000324	COND.FILOPAC. 24T-3R-240 T.5/16 PA=4	CONDENSER	
c	RR000297	FMI 10W TRIVAL.3x500 C/FAST,230/1/50-60	MOTOFAN	
g	RR000292	VENTOLA ASPIRANTE DIAM.230/28 SP=1	FAN	
d	RR000293	CONVOGL.IN PLAST.X VENTOLA D.230	CONVEYOR	
e	RR000325	EVAP.CONV.16T-9T-2R-PACCO 340-PA=4 C.NER	EVAPORATOR	
f	RR000295	FMI 10W TRIVAL.3x2000 230/1/50 C/GUIDE	MOTOFAN	
h	RR000296	VENTOLA ASPIRANTE DIAM.200/28 SP=0,8	FAN	
i	RR000338	GRIGLIA METALLO D.200 APER.H26 VERN.NERA	GRID	
l	RR000322	RESIST.A DOPPIA CANDELA "L" L410MM V230	RESISTANCE	

UNSDL007Z011 (BT) LOW TEMPERATURE				
POS	CODE	DESCRIPTION		
a	RR000328	COMP.ASPERA R404A 12,12CC V.220-240/1/50	COMPRESSOR	
b	RR000291	COND.FILOPAC. 40T-10T-4R-240-PA=4 5/16"	CONDENSER	
c	RR000297	FMI 10W TRIVAL.3x500 C/FAST.230/1/50-60	MOTOFAN	
g	R000292	VENTOLA ASPIRANTE DIAM.230/28 SP=1	FAN	
d	RR000293	CONVOGL.IN PLAST.X VENTOLA D.230	CONVEYOR	
e	RR000329	EVAP.CONV.24T-9T-3R-PACCO 340-PA=4 C.NER	EVAPORATOR	
f	RR000303	ELCO 18/62W 230/1/50-60 2600RPM C/COND.	MOTOFAN	
h	RR000296	VENTOLA ASPIRANTE DIAM.200/28 SP=0,8	FAN	
i	RR000338	GRIGLIA METALLO D.200 APER.H26 VERN.NERA	GRID	
l	RR000322	RESIST.A DOPPIA CANDELA "L" L410MM V230	RESISTANCE	

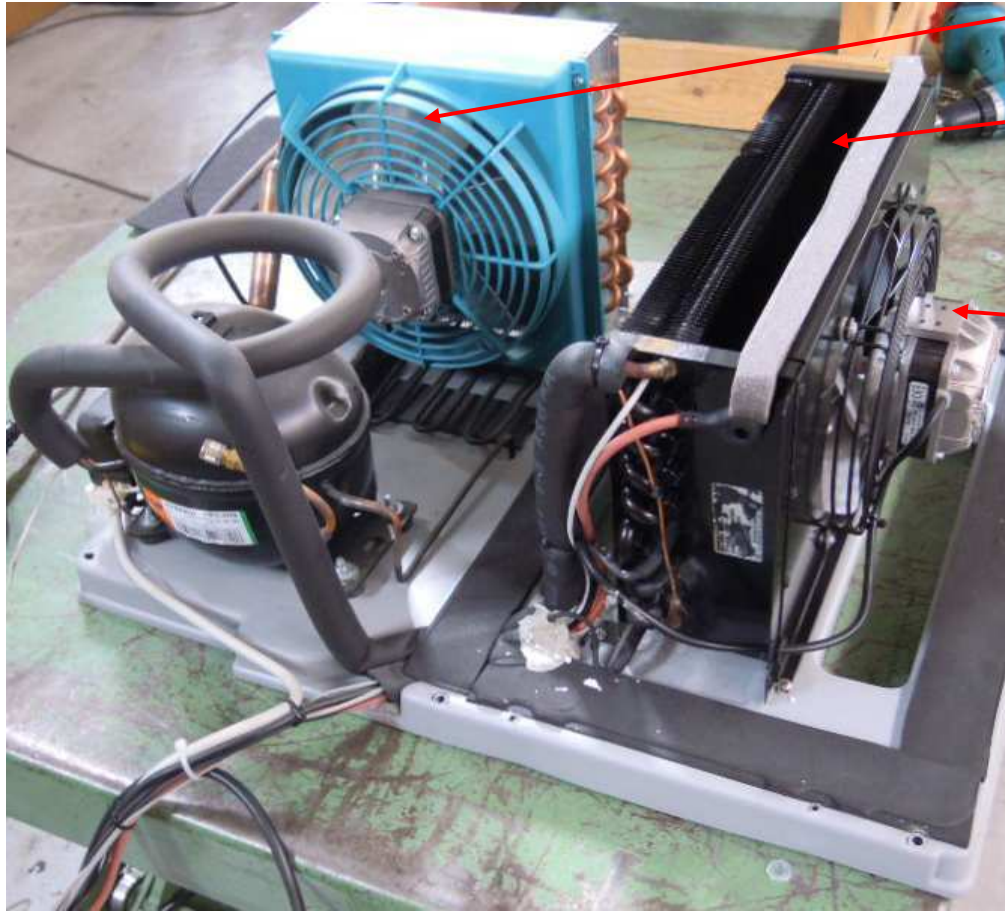


a

c

b

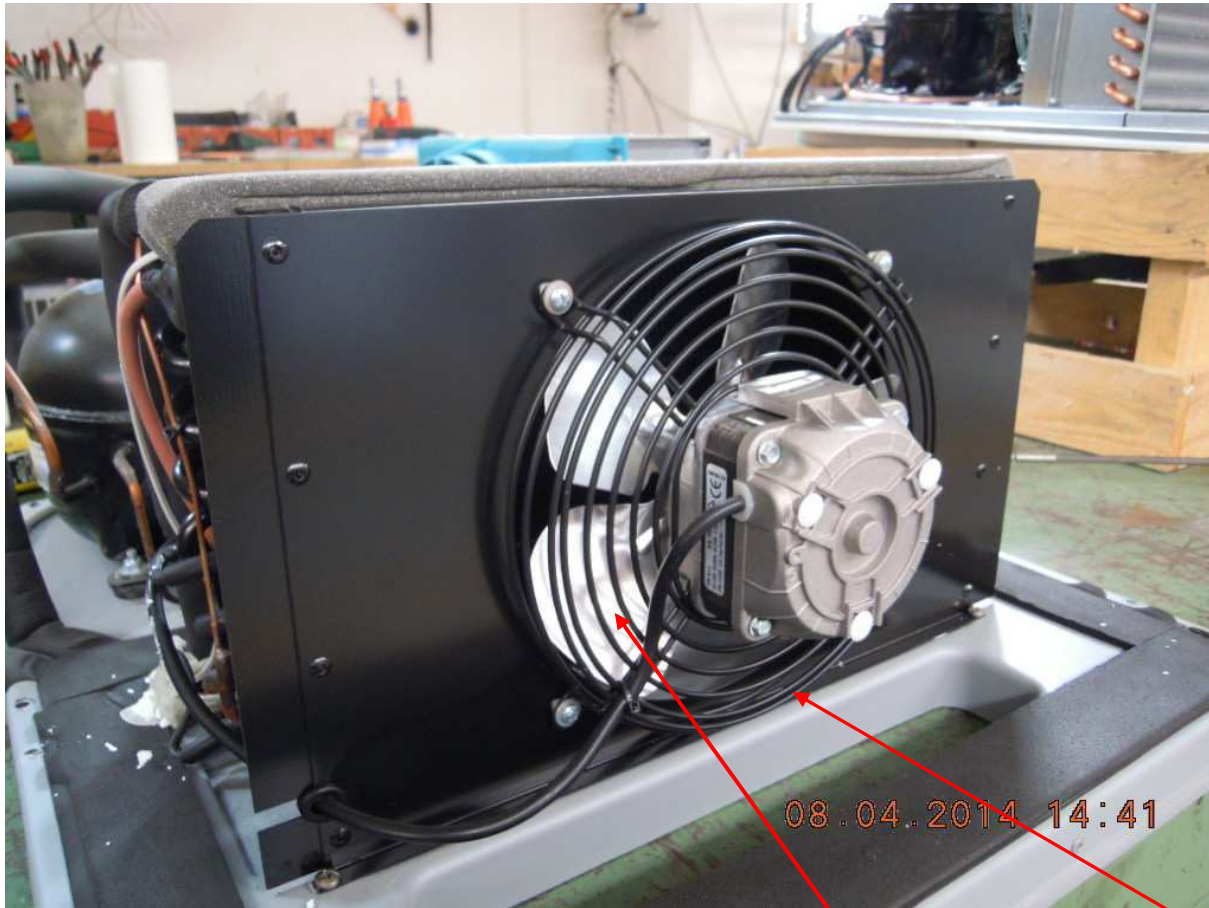
d



g

e

f



h

i



l

m