

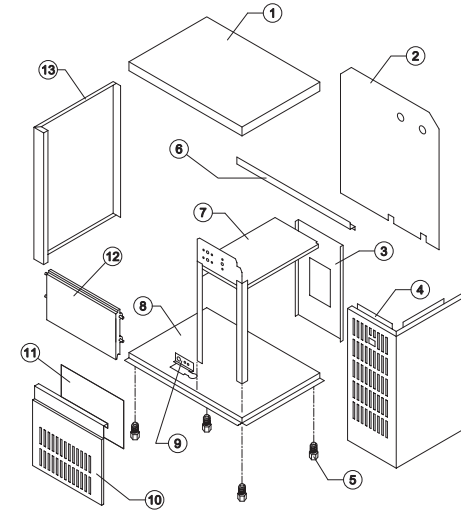


IC 24

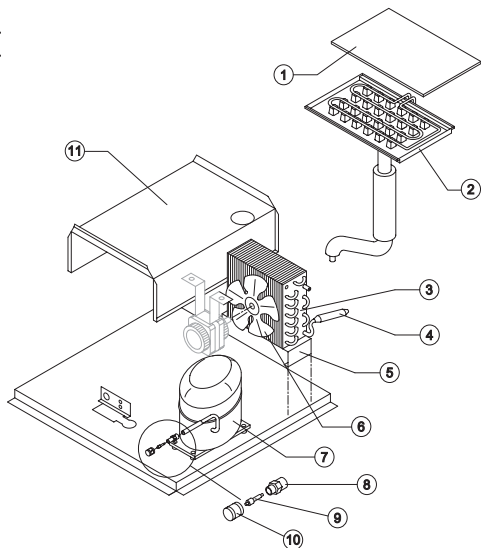
LIST OF THE EXPLODED VIEWS



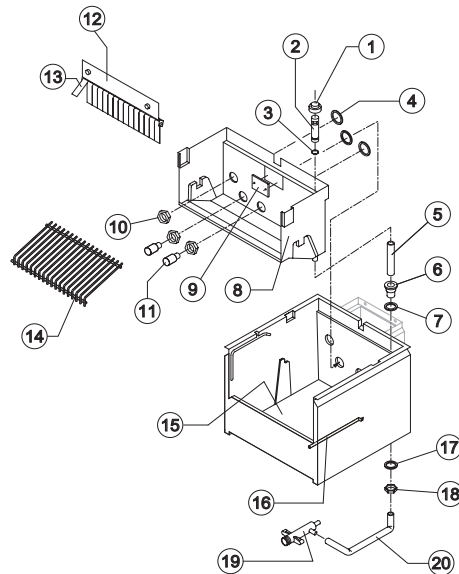
SHELL ASSY



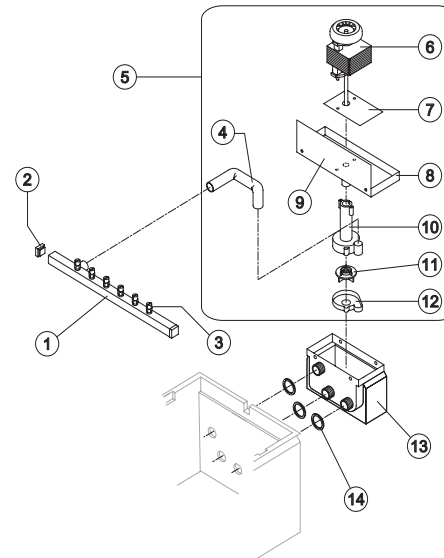
COOLING SYSTEM



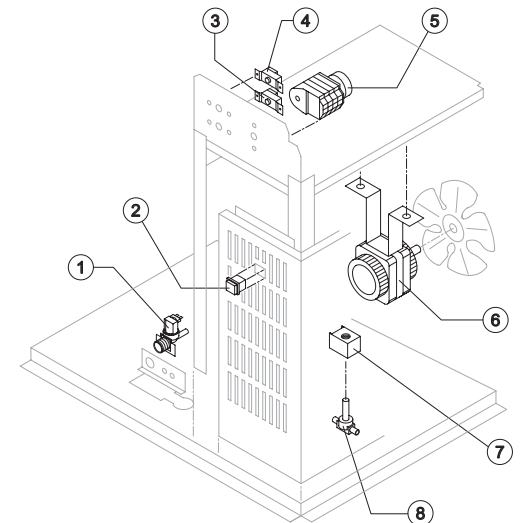
HYDRAULIC CIRCUIT



SPRAYER PUMP



ELECTRIC PARTS

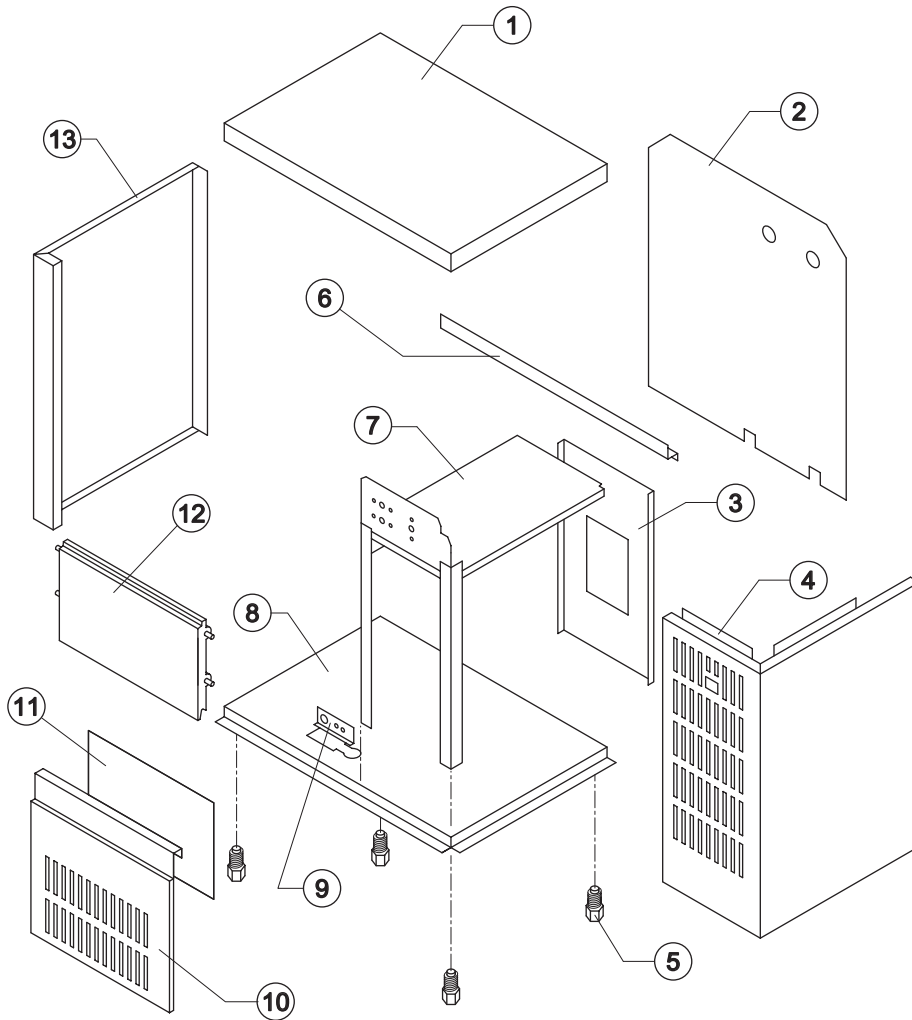


Rev. 3 - 2/7/2003



IC 24

SHELL ASSY



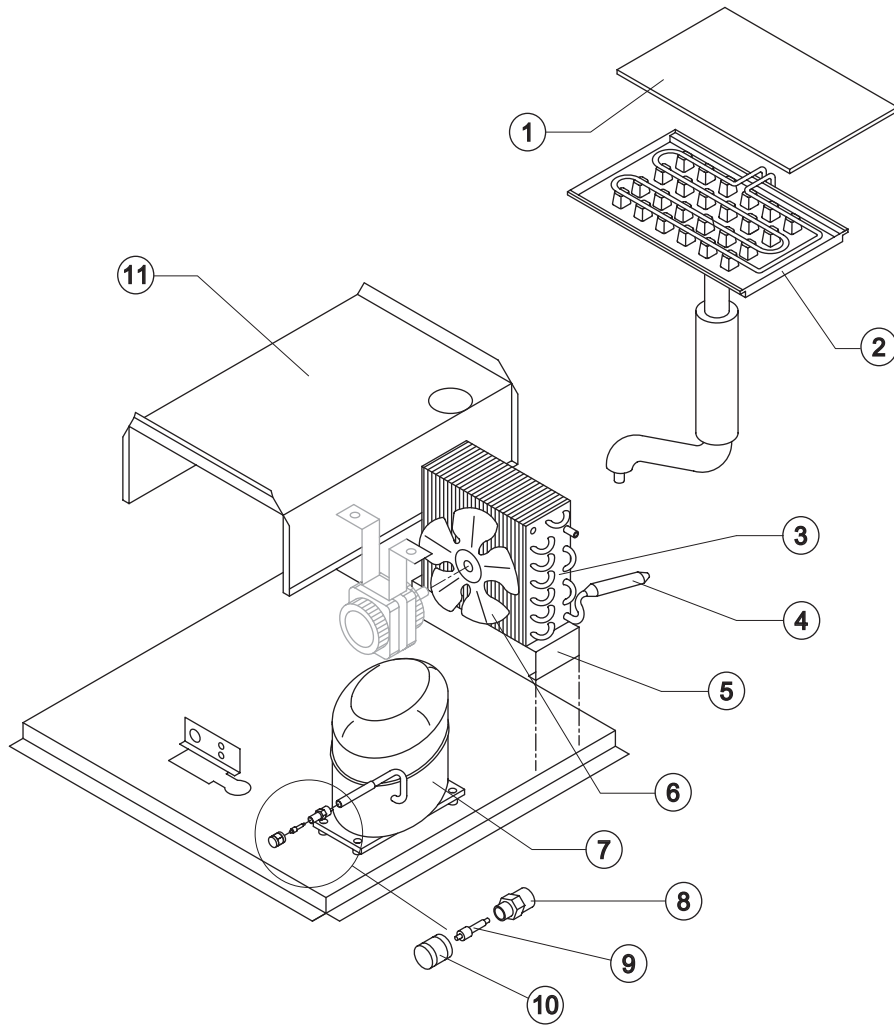
Ref.	Spare Description	Code
1	Top Assembly	C22298
2	Back Panel	21152
3	Back Plate	21151
4	Right & Front Panel (Fan Side)	22297
5	Foot	10017
6	Cross Fixing Panels	21163
7	Fan Motor & Electrical Components Support Plate	22296
8	Base Plate	21153
9	Support (Watervalue & Discharge)	21149
10	Front Panel	22300
11	Filtering Panel	18075
12	Door Assy	C10303
13	Left Side	22299

Rev. 3 - 2/7/2003



IC 24

COOLING SYSTEM



Ref.	Spare Description	Code
1	Evaporator Cover	10008
2	Evaporator	See Table
3	Air Condenser	20260
4	Molecular Drier	14009
5	Air Condenser Support	21148
6	Suction Fan	20095
7	Compressor	See Table
8	Vacuum-Charge Valve Body	14007
9	Vacuum-Charge Valve Device	14005
10	Vacuum-Charge Valve Plug	14006
11	Bin Support Saddle	21150

Ref. 2 - Evaporator

Kind of Cube	Code
18 g. (Standard)	D10045
33 g. (Big)	-
13 g. (Small)	D10416

Ref. 7 - Compressor

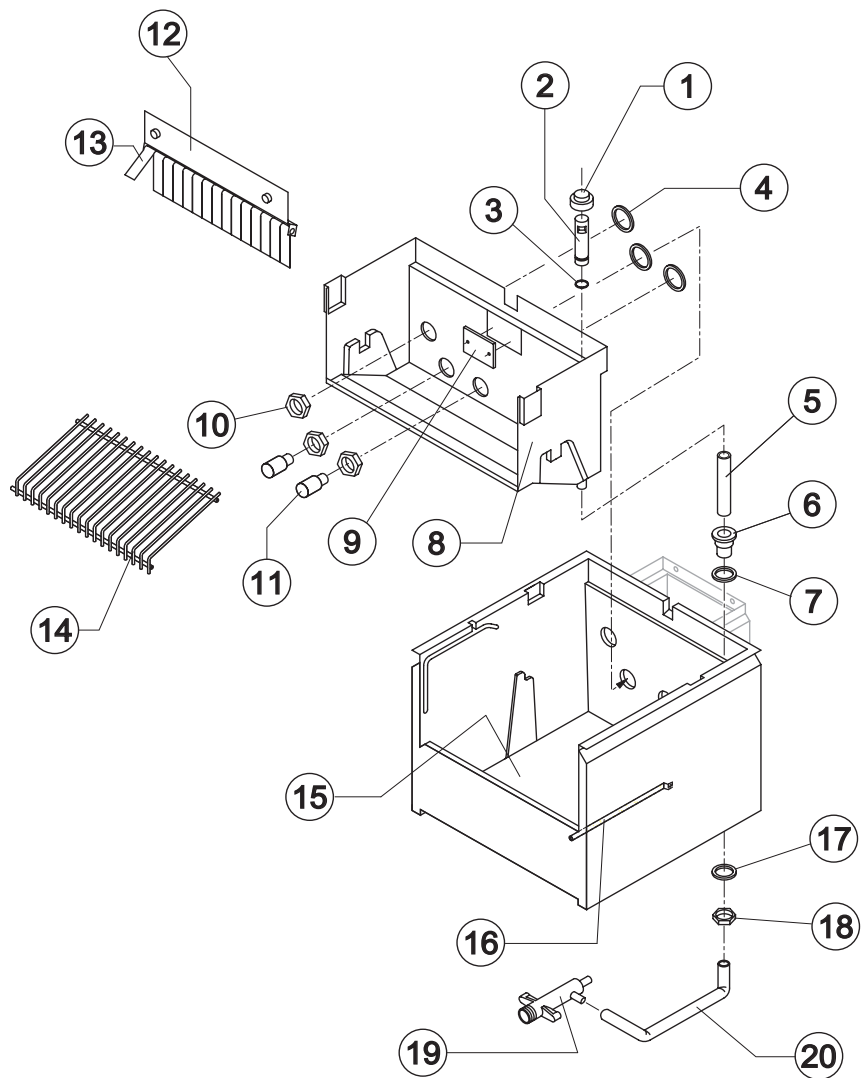
Tension	Code
220/240V 50 Hz	23436
220/230V 60 Hz	23494
110/115V 60 Hz	23446

! Ref. 2 - Before s/n. 189572 (for "small size" ice cube only) ask, beside the Evaporator, also the Evaporator Support.



IC 24

HYDRAULIC CIRCUIT

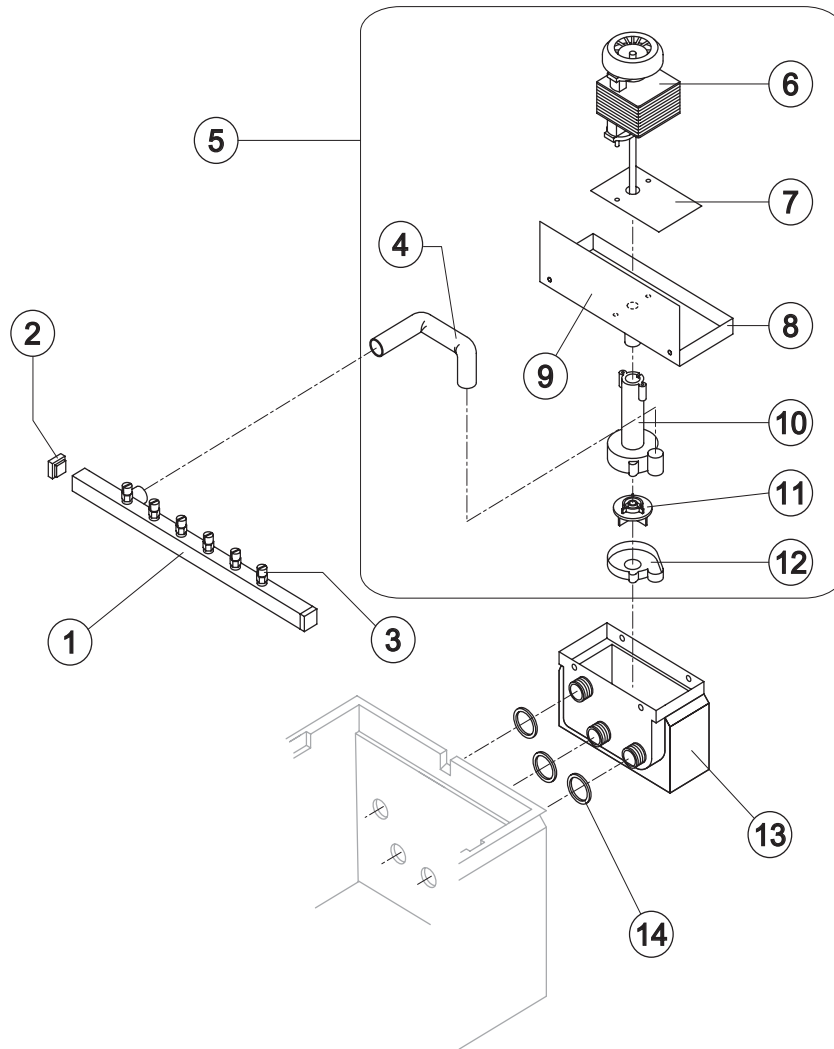


Ref.	Spare Description	Code	
1	Overflow Cap	10305	
2	Overflow Pipe	10133	
3	OR Gasket for Overflow Pipe	20233	
4	Silicone Seal for Pump Basin	13069	
5	Overflow Pipe	Current Version	13105
5	Overflow Pipe	Till s/n. 65042	13001
6	Plastic Nipple Water Outlet	10007	
7	Silicone Gasket	13006	
8	Inner Basin	10158	
9	Slide Keep Plate	10009	
10	Nut for Basin Connections	10159	
11	Pump Suction Filter	20005	
12	Flags Support Assy	C22034	
13	Flag	10005	
14	Ice Cubes Slide	See Table	-
15	Foamed Basin	C11121	
16	Bulbe Thermostat Tube	20520	
17	Semirigid Polyethylene Gasket	13007	
18	Bin Discharge Nut	10096	
19	Discharges Manifold	10006	
20	Water Discharge Pipe	13066	

Ref. 14 - Ice Cubes Slide

Kind of Cube	Code
18 g. (Standard)	D12001
33 g. (Big)	-
13 g. (Small)	D12046

Rev. 3 - 2/7/2003



Ref.	Spare Description	Code
1	Sprayers Bar Assembly	See Table
2	Sprayers Bar plug	10012
3	Sprayer	D20002
4	Pump Delivery Pipe	13068
5	Pump Assembly	See Table
6	Pump Motor	See Table
7	Heat Dissipator	22430
8	Pump Motor Holder	10161
9	Basin/Pump Fender Case	22763
10	Pump Body	10065
11	Pump Impeller	10066
12	Diffuser	10067
13	Insulated Pump Basin	C11048
14	Silicone Seal for Pump Basin	13069

Ref. 1 - Sprayers Bar Assembly

Kind of Cube	Code
18 g. (Standard)	C20572
33 g. (Big)	-
13 g. (Small)	C20570

Ref. 5 - Pump Assembly

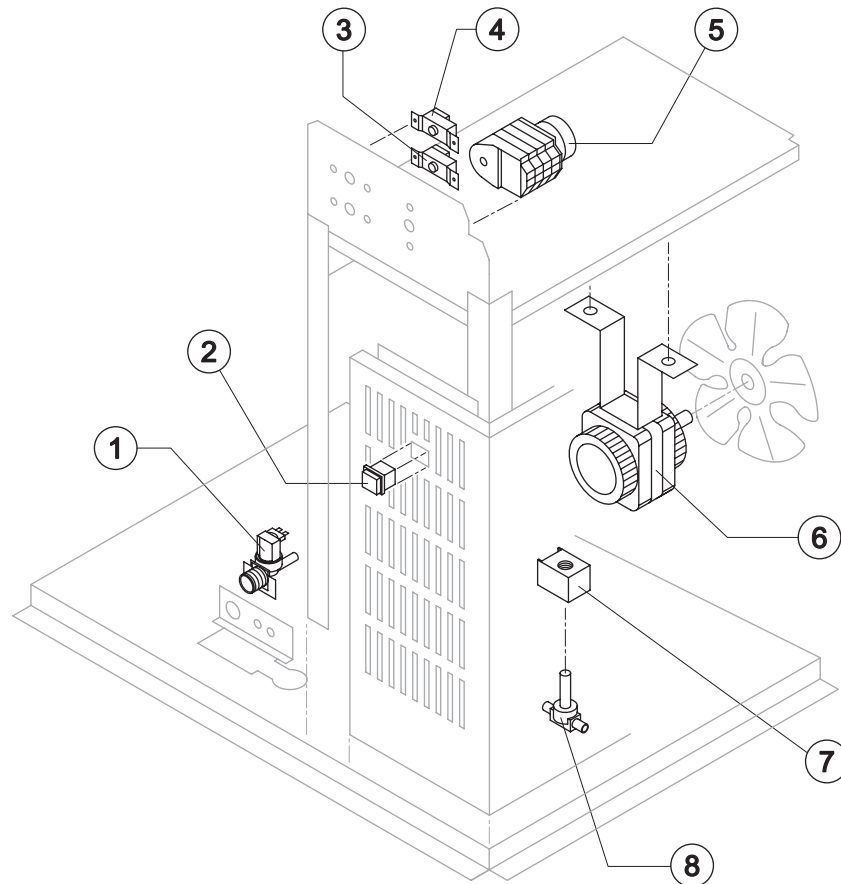
Tension	Code
220/240V 50 Hz	C23254
220/230V 60 Hz	C23416
110/115V 60 Hz	C23417

Ref. 6 - Pump Motor

Tension	Code
220/240V 50 Hz	23073
220/230V 60 Hz	23187
110/115V 60 Hz	23188



Rev. 3 - 2/7/2003



Ref.	Spare Description	Code
1	Inlet Watervalve 1 Way	See Table
2	Green Light Switch	23327
3	Evaporator Thermostat	23591
4	Bin Thermostat	23005
5	Timer	See Table
6	Fan Motor	See Table
7	Hot Gas Coil	See Table
8	Hot Gas Valve Body	20410

Ref. 1 - Inlet Watervalve 1 Way

Tension	Code
220/240V 50 Hz	23300
220/230V 60 Hz	23300
110/115V 60 Hz	23415

Ref. 6 - Fan Motor

Tension	Code
220/240V 50 Hz	23029
220/230V 60 Hz	23029
110/115V 60 Hz	23683

Ref. 5 - Timer

Tension	18g Cube	33g Cube	13g Cube
220/240V 50 Hz	23222	-	23247
220/230V 60 Hz	23248	-	23247
110/115V 60 Hz	23259	-	23258

Ref. 7 - Hot Gas Coil

Tension	Code
220/240V 50 Hz	23091
220/230V 60 Hz	23091
110/115V 60 Hz	23256