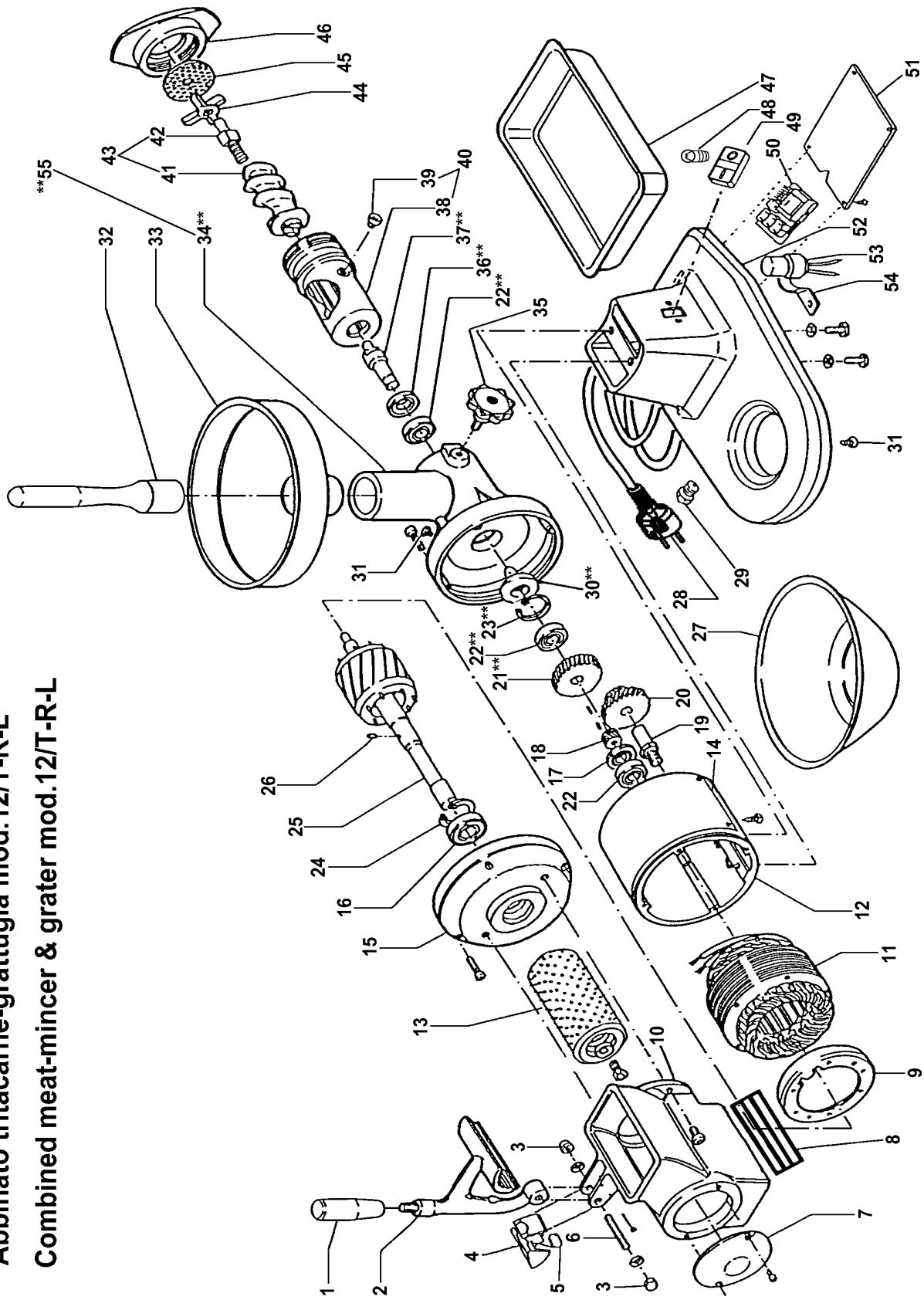


**Abbinato tritacarne-grattugia mod.12/T-R-L
 Combined meat-mincer & grater mod.12/T-R-L**



****:** Assemblato / Assembly

ABBINATO TRITACARNE-GRATTUGIA MOD.12/T-R-L COMBINED MEAT-MINCER & GRATER MOD.12/T-R-L

RIF.	CODICE / CODE	DIN - UNI	DESCRIZIONE / DESCRIPTION
1	SL0106		Impugnatura / Grip
2	SL0201		Pressore / Pusher
2	SL0107	01/09/99 f.p.(*)	Pressore / Pusher
3	SL0108	M8	Dado / Nut
4	SL0882		Supporto / Support
5	SL0885		Microinterruttore / Microswitch
6	SL0258	M8x60	Prigioniero / Stud
7	SL0111		Coperchietto / Cover
8	SL1452		Griglia / Grid
9	SL0189		Protezione / Guard
10	SL0203		Bocca / Casing
10	SL0112	01/09/99 f.p.(*)	Bocca / Casing
11	SL0183	230-400V/3Ph/50Hz	Statore trifase / Triple-phase stator
11	SL0122	230V/1Ph/50Hz	Statore monofase / Single-phase stator
12	SL0146		Carcassa / Housing
12	SL0123	01/04/00 f.p.(*)	Carcassa trifase / Triple-phase housing
13	SA5200		Rullo / Cylinder
14	SL0181		Lista / Covering
15	SL0117		Calotta / Cap
16	SL0118	6205 ZZ	Cuscinetto / Bearing
17	SL0127	17x40x7	Paraolio / Oil seal
18	SL0128		Ingranaggio / Gear
19	SL0124		Albero / Shaft
20	SL0125		Ingranaggio / Gear
21	SL0130		Ingranaggio / Gear
22	SL0131	6203 2RS	Cuscinetto / Bearing
23	SL0132	ø40	Seeger Interno / Spring Ring
24	SL0119	ø52	Seeger Interno / Spring Ring
25	SA6700	230-400V/3Ph/50Hz	Rotore trifase / Triple-phase rotor
25	SA6600	230V/1Ph/50Hz	Rotore monofase / Single-phase rotor
26	SL0121	ø5x10	Spina cilindrica / Pin
27	SL0174		Recipiente mod.R-T / Container mod.R-T
27	SL0175		Recipiente mod.L / Container mod.L
28	SL1841	3Ph+Gnd	Cavo elettrico trifase / Electric cable (triple-phase)
28	SL1671	1Ph+N+Gnd	Cavo elettrico monofase / Electric cable (single-phase)
29	SL1668	PG11	Pressacavo / Cable clamp
30	SL0816	17x24x1	Spessore / Spacer
31	SL0133		Tappo / Tap
32	SL0134		Pestello / Pusher
33	SL0135		Tramoggia mod.R-L / Hopper mod.R-L
33	SL0136		Tramoggia mod.T / Hopper mod.T
34	SL0137		Bocchettone / Sleeve
35	SL0138		Pomello / Knob
36	SL0139	25x40x7	Paraolio / Oil seal
37	SL0140		Albero / Shaft
38	SL0142		Bocchettone inox / Stainless steel sleeve
38	SL0141	01/01/00 f.p.(*)	Bocchettone ghisa / Cast iron sleeve
39	SL0143	01/01/00 f.p.(*)	Vite / Screw
40	SA5000	01/01/00 f.p.(*)	Gruppo bocchettone ghisa/Cast iron sleeve (assembly)
41	SL0145		Coclea inox / Stainless steel screw shaft
41	SL0144	01/01/00 f.p.(*)	Coclea ghisa / Cast iron screw shaft
42	SL0822		Perno / Pivot
43	SA5300		Gruppo coclea inox/Stainless steel screw shaft (assembly)
43	SA5100	01/01/00 f.p.(*)	Gruppo coclea ghisa / Cast iron screw shaft (assembly)
44	//////////		Coltello / Cutter
45	//////////		Piastra / Plate
46	SL0171		Ghiera inox / Stainless steel locking ring
46	SL0172	01/01/00 f.p.(*)	Ghiera alluminio / Aluminium locking ring
47	SL0180		Recipiente mod.R-T / Container mod.R-T
48	SL1677	36V 2W	Lampadina / Bulb
49	SL0891		Pulsante / Push button
50	SL0883		Scheda elettronica / Electronic card
51	SL0268		Fondo mod.R-T / Bottom mod.R-T
51	SL0226		Fondo mod.L / Bottom mod.L
52	SL0178		Base mod.R-T / Base mod.R-T
52	SL0179		Base mod.L / Base mod.L
53	SL0177	16µF	Condensatore / Condenser
54	SL0176		Staffa / Bracket
55	SA3700		Gruppo bocchettone / Sleeve (assembly)

(*): fuori produzione / out of production