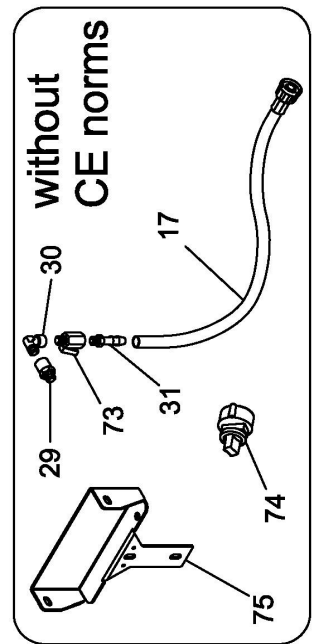
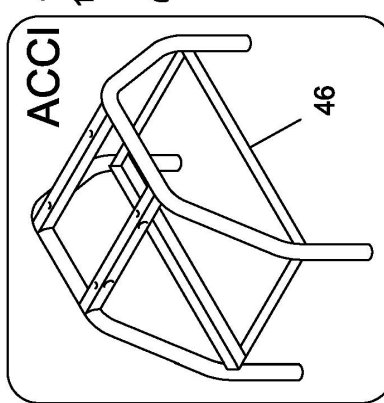
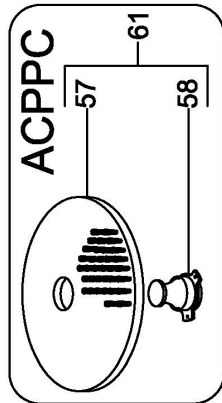
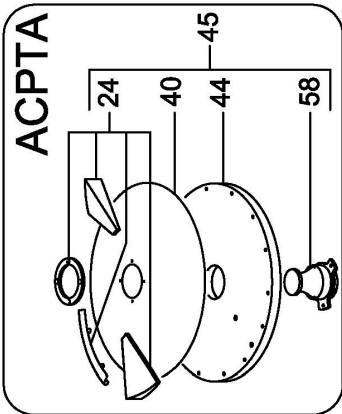
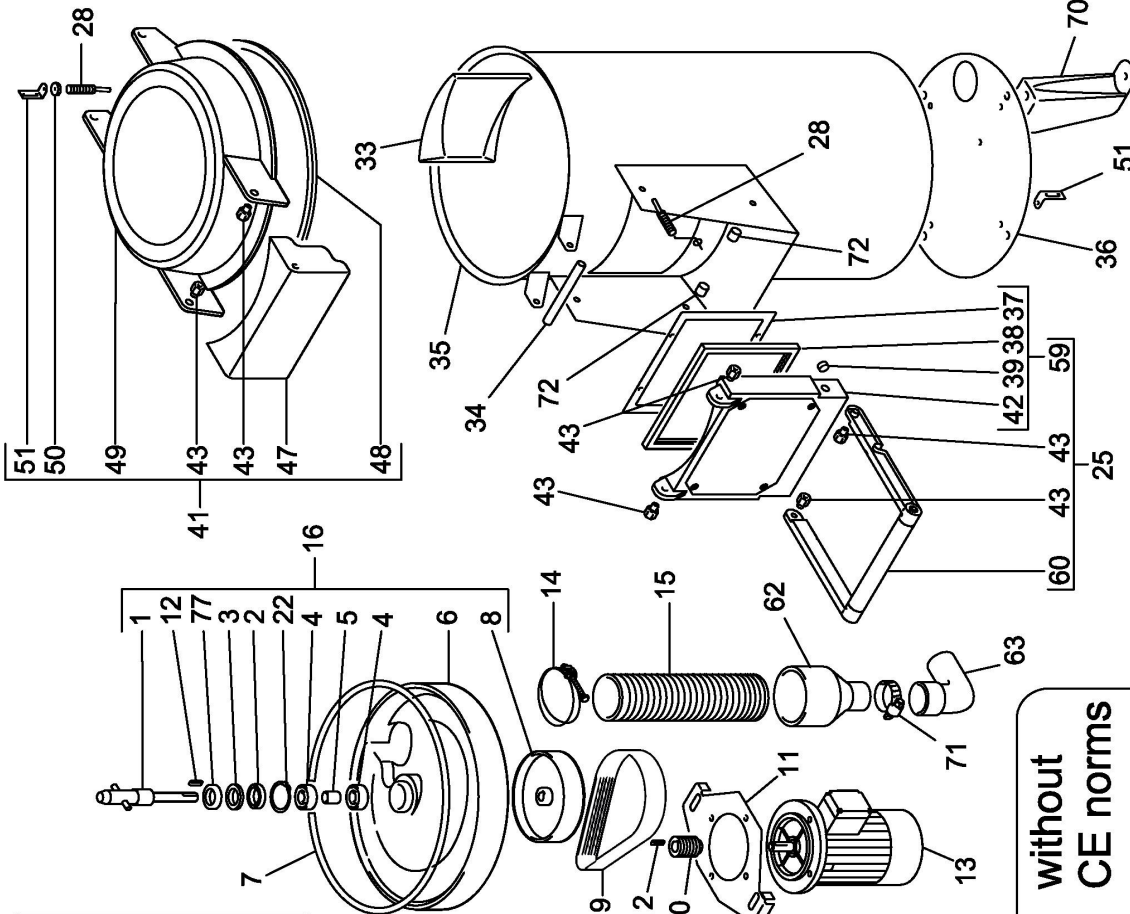
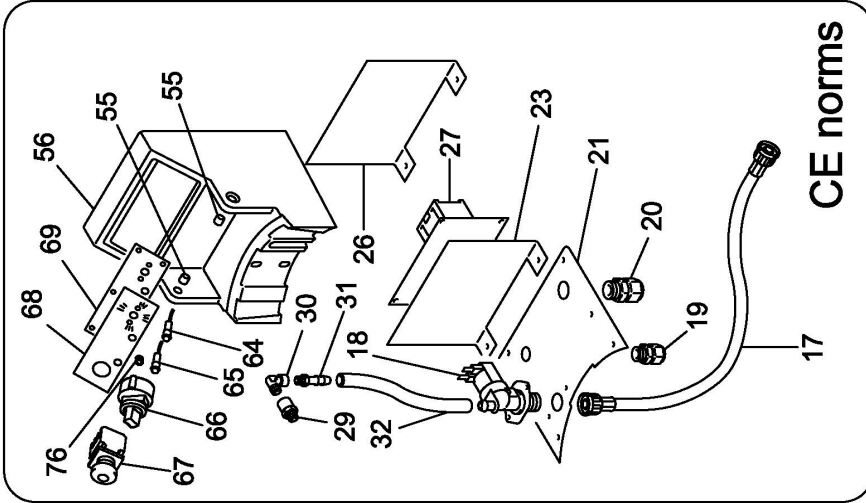
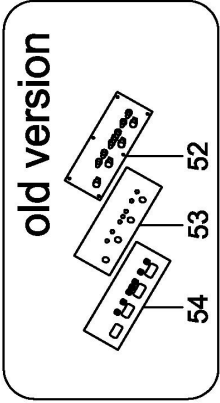


PPN-PPF-LCN-LCF10-18M



PPN-PPF-LCN-LCF10-18M

| Pos. Ref. | Codice Code | Caratteristiche Features | Descrizione Description |
|-----------|-------------|--|------------------------------------|
| 1 | 36G6590 | | Albero Shaft |
| 2 | 3151300 | ø28xø42x7 | Paraolio Oil seal |
| 3 | 3190830 | | Rosetta Washer |
| 4 | 36F0090 | 6302 2RS | Cuscinetto Bearing |
| 5 | 36G5950 | | Boccola Bush |
| 6 | 3600870 | | Fondo Bottom |
| 7 | 3151750 | | Guarnizione Gasket |
| 8 | 36G6600 | | Puleggia Pulley |
| 9 | 36G6610 | ● Poly V-559 j12 | Cinghia Belt |
| 10 | 36G6620 | (PPN-PPF10-18) | Puleggia Pulley |
| 10 | 36G0030 | (LCN-LCF10-18) | Puleggia Pulley |
| 11 | 35V1230 | | Staffa Stirrup |
| 12 | SL0010 | 5x5x20 | Linguetta Key |
| 13 | SL0040 | 400V/3Ph/50Hz (PPN-PPF10) | Motore Motor |
| 13 | SL0041 | 230V/1Ph/50Hz (PPN-PPF10) | Motore Motor |
| 13 | SL1041 | 400V/3Ph/50Hz (PPN-PPF18) | Motore Motor |
| 13 | SL1042 | 230V/1Ph/50Hz (PPN-PPF18) | Motore Motor |
| 13 | SL1521 | 400V/3Ph/50Hz (LCN-LCF10) | Motore Motor |
| 13 | SL1523 | 230V/1Ph/50Hz (LCN-LCF10) | Motore Motor |
| 13 | SL1522 | 400V/3Ph/50Hz (LCN-LCF18) | Motore Motor |
| 13 | SL1524 | 230V/1Ph/50Hz (LCN-LCF18) | Motore Motor |
| 13 | 32M4080 | 400V/3Ph/50Hz (2 speed - PPN-PPF10) 01/01/05 f.p.(*) | Motore Motor |
| 13 | 32M4050 | 400V/3Ph/50Hz (2 speed - PPN-PPF18) 01/01/05 f.p.(*) | Motore Motor |
| 14 | 3140460 | ø88=ø96 | Fascetta Clip |
| 15 | SL2721 | ø90 (PPN-LCN) | Tubo Tube |
| 15 | 35X1150 | ø90 (PPF-LCF) | Tubo Tube |
| 16 | SA1064 | Assembly | Fondo Bottom |
| 17 | 33M0010 | 3/4" F-F | Tubo Tube |
| 18 | 33D1371 | 230V/50-60Hz 3/4" M | Elettrovalvola Electro-valve |
| 19 | SL0893 | PG13,5 | Pressacavo Cable clamp |
| 19 | 32D0360 | 01/01/04 f.p.(*) | Pressacavo Cable clamp |
| 20 | 32D1090 | PG21 | Pressaguaina Sheathing clamp |
| 21 | SL2939 | | Piastra Plate |
| 21 | 35Q8620 | 01/01/04 f.p.(*) | Piastra Plate |
| 22 | SL2056 | ø42 | Seeger Seeger |
| 23 | SL2785R0 | | Piastra Plate |
| 23 | 35V8601 | 01/01/04 f.p.(*) | Divisorio Dividing head |
| 24 | SA3460 | plastic (PTA) | Kit disco Disk set |
| 24 | SA3450 | 28/01/08 f.p.(*) | Kit disco Disk set |
| 25 | SA1072 | Assembly | Sportello Door |
| 26 | 35M8840 | | Covering Covering |
| 27 | SL2921 | ● | Scheda elettronica Electronic card |
| 27 | 32Z4840 | 01/01/04 f.p.(*) | Teleruttore Remote control switch |
| 28 | 32W3240 | ● CE norms | Microinterruttore Microswitch |
| 29 | 33Q6210 | 1/4" M-F | Raccordo Nipple |
| 30 | 33Q6040 | L 90° 1/4" M-F | Raccordo Nipple |
| 31 | 33Q5180 | 1/4" M ø12 | Portagomma Cluch |
| 32 | 33M0960 | ø12 | Tubo Tube |
| 33 | 36D9660 | | Saltarello Leaper |
| 34 | 36G2040 | | Perno Pivot |
| 35 | 30W2930 | (PPN-PPF-LCN-LCF10) | Carcassa Housing |
| 35 | SL2694 | (PPN-PPF-LCN-LCF18) | Carcassa Housing |
| 36 | SL3369 | (PPN-LCN10-18) | Fondo Bottom |
| 36 | 35D7790 | (PPF-LCF10-18) | Fondo Bottom |
| 37 | 36C0011 | | Telaio Frame |
| 38 | 37Q7860 | | Guarnizione Gasket |
| 39 | 3600160 | ● CE norms | Magnete Magnet |
| 40 | SL3544 | | Tela abrasiva Emery cloth |
| 40 | SL2494 | ● 28/01/08 f.p.(*) | Tela abrasiva Emery cloth |
| 41 | 6005380 | Assembly | Coperchio Cover |
| 42 | SA3400 | Assembly | Sportello Door |
| 43 | 36D9550 | | Boccola Bush |
| 44 | SL3543 | | Disco Disk |
| 44 | SL2135 | 28/01/08 f.p.(*) | Disco Disk |
| 45 | ACPTA | Assembly (PPN-PPF10-18) | Disco patate Potato disk |
| 46 | ACCI | Assembly (PPF-LCF10-18) | Telaio Frame |
| 47 | 36M5090 | | Maniglia Handle |
| 48 | SL2871 | ● | Guarnizione Gasket |
| 49 | 36Z6501 | | Coperchio Cover |
| 50 | 3600310 | ● CE norms | Magnete Magnet |
| 51 | 35V6381 | | Staffa Stirrup |

(*) : fuori produzione / out of production

● : ricambio consigliato / spare part suggested

PPN-PPF-LCN-LCF10-18M

| Pos. Ref. | Codice Code | Caratteristiche Features | Descrizione Description | |
|-----------|-------------|---|-------------------------|-----------------|
| 52 | 32Z3030 | 01/01/04 f.p.(*) | Scheda elettronica | Electronic card |
| 53 | 30A3560 | 01/01/04 f.p.(*) | Pannello | Panel |
| 54 | SL1504 | 01/01/04 f.p.(*) (PPN-PPF-LCN-LCF10-18) | Etichetta | Label |
| 54 | SL1505 | 01/01/04 f.p.(*) (2 speed - PPN-PPF-LCN-LCF10-18) | Etichetta | Label |
| 55 | 36D7310 | | Boccola | Bush |
| 56 | 36Z0690 | | Scatola | Box |
| 57 | 36G6880 | | Disco cozze | Mussel disk |
| 58 | SL3267 | | Pomello | Knob |
| 59 | 6000930 | Assembly | Sportello | Door |
| 60 | SA1093 | Assembly | Maniglia | Handle |
| 61 | ACPPC | Assembly (LCN-LCF10-18) | Disco cozze | Mussel disk |
| 62 | SL2720 | ∅100-∅50 (PPN-LCN10-18) | Riduzione | Reduction |
| 63 | SL2719 | ∅50 (PPN-LCN10-18) | Gomito | Bend |
| 64 | 32W2970 | ● 230V 2W green | Lampada | Lamp |
| 65 | 32W3280 | ● 230V 2W white | Lampada | Lamp |
| 66 | SA1087 | ● | Timer | Timer |
| 67 | SA1088 | ● Unstable | Pulsante | Push button |
| 68 | SL3705 | | Etichetta | Label |
| 68 | SL3530 | 01/12/08 f.p.(*) | Etichetta | Label |
| 69 | SL3693 | | Pannello | Panel |
| 69 | 30A3620 | 01/12/08 f.p.(*) | Pannello | Panel |
| 70 | SL3223 | ● (PPN-LCN10-18) | Piedino | Foot |
| 71 | SL2745 | ∅50÷∅70 (PPN-LCN10-18) | Fascetta | Clip |
| 72 | SL2349 | | Perno | Pivot |
| 73 | SL1622 | 1/4" M-F | Rubinetto | Cock |
| 74 | SA1092 | Assembly | Timer | Timer |
| 75 | SL2904 | | Staffa | Stirrup |
| 76 | SL0772 | V-8-S | V-ring | V-ring |
| 77 | SL3943 | ∅28x∅42x7 | Paraolio | Oil seal |

(*) : fuori produzione / out of production

● : ricambio consigliato / spare part suggested