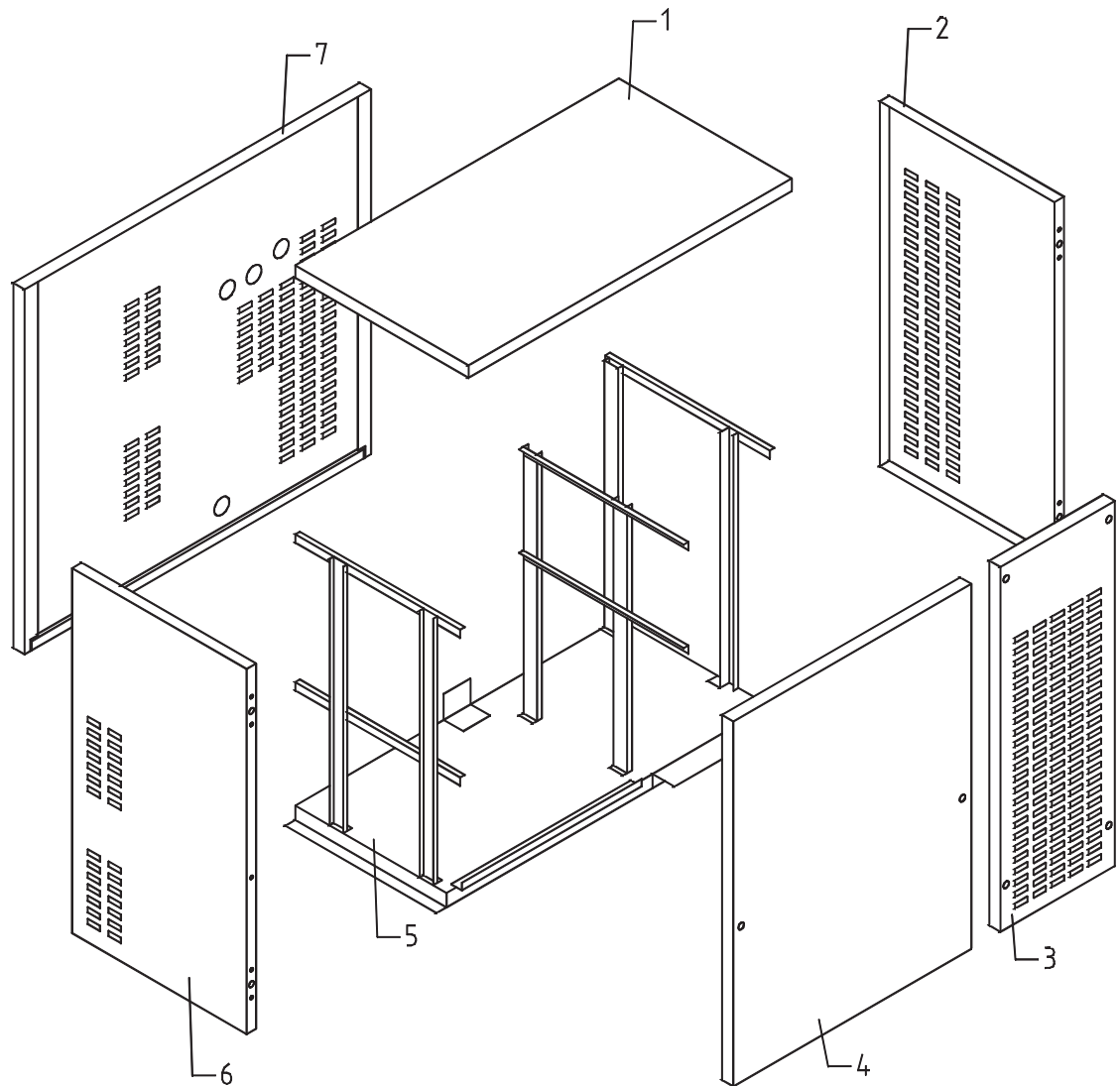


Shell assembly Mod. C300 A/W



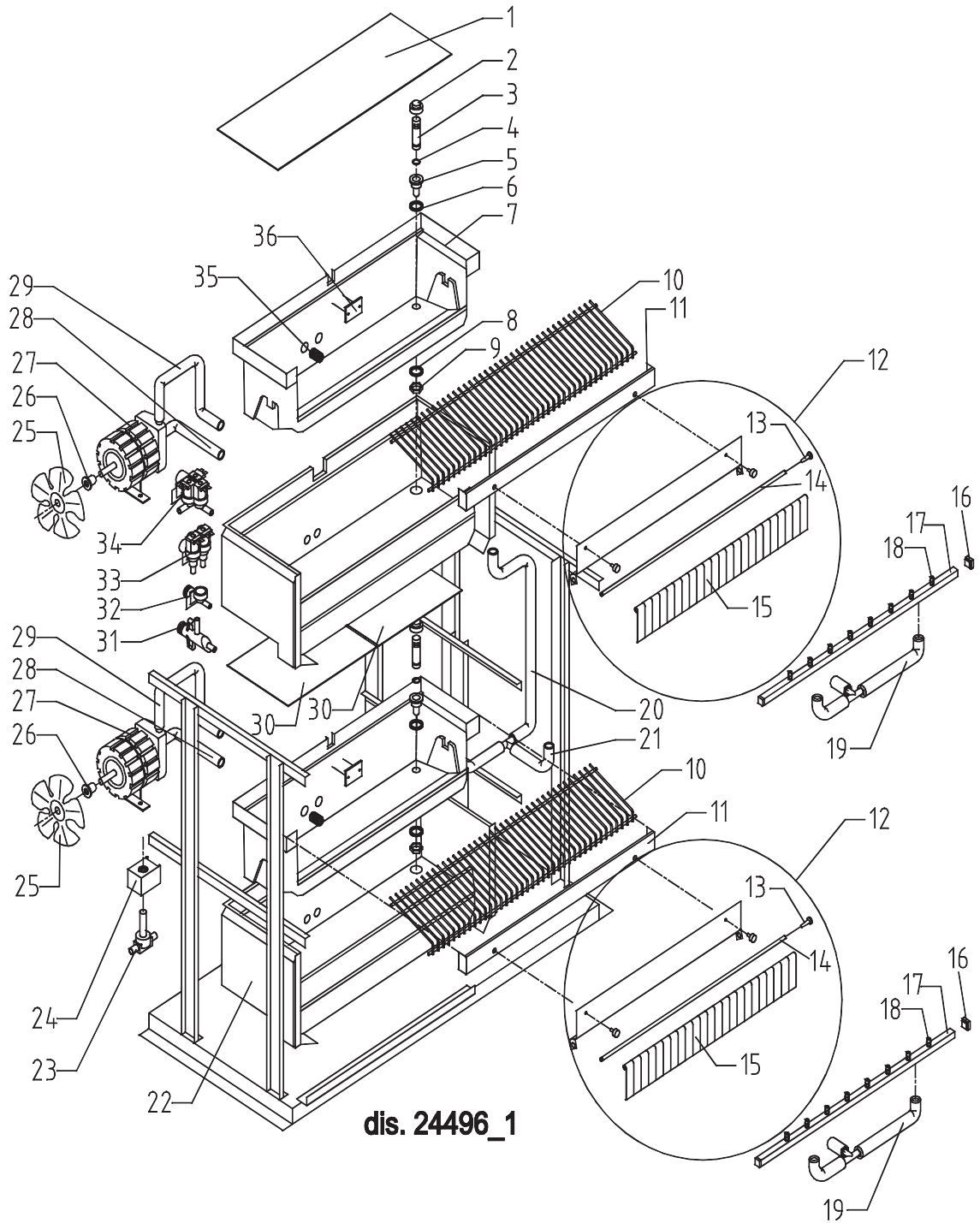
dis. 24494_0

Shell assembly Mod. C300 A/W (TAB. 27)

Ref.	Description	Refrigerant	A/W	Tension	Code
1	Top assembly				C22481
2	Right side				22483
3	Front panel (condenser side)				22203
4	Front panel assy (bin side)				C22432B
5	Base plate				21110
6	Left side				22482
7	Back panel				22195

Note: 4.Code C22432B from serial no. 9406718594. Previous serial no. C22202.

Hydraulic circuit Mod. C300 A/W

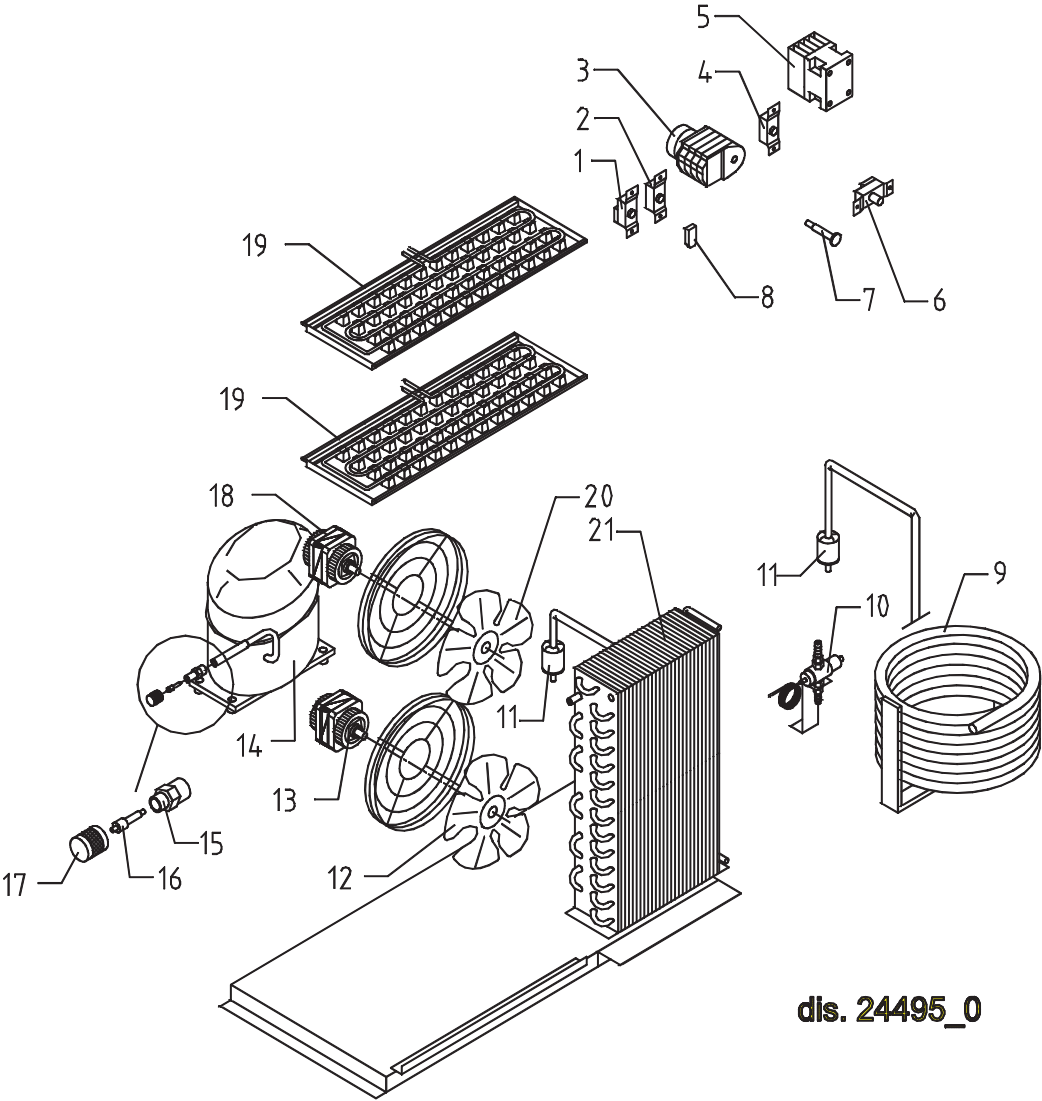


Hydraulic circuit Mod. C300 A/W (TAB. 28)

Ref.	Description	Refrigerant	A/W	Tension	Code
1	Evaporator cover				10058
2	Overflow cap				10305
3	Overflow tube				10133
4	Or gasket for overflow pipe				20233
5	Plastic nipple water outlet				10007
6	Silicone gasket				13006
7	Inner basin				10055
8	Semirigid polyethylene gasket				13007
9	Bin discharge nut				10096
10	Ice cubes slide				D12022
11	Evaporator holder				22079
12	Flags support assy				C22134
13	Flags rod clip				10010
14	Flags rod				12023
15	Flag				10005
16	Sprayers bar plug				10012
17	Sprayers bar assembly				C20144
18	Sprayer				D20002
19	Sprayers bar pipe connection assy				C13036
20	Water discharge pipe (upper bin)				13048
21	Water discharge pipe (lower bin)				13049
22	Foamed basin				C11067
23	Hot gas valve body				20409
24	Hot gas coil				23091
25	Suction impeller				10213
26	Hub+washer+screw				10014
27	Pump motor				23068
28	Pump suction pipe				13047
29	Pump delivery pipe				13046
30	Evaporator cover				10115
31	Exhaust manifold		A		10006
31	Discharges manifold		W		C10051
32	1 way inlet water nipple		W		10239
33	Inlet water valve 2 ways				23157
35	Pump suction filter				20005
36	Slide keep plate				10009

Note: 34. Code C23160 (W) until number 118439.

Cooling system assembly Mod. C300 A/W



dis. 24495_0

Cooling system assembly Mod. C300 A/W (TAB. 29)

Ref.	Description	Refrigerant	A/W	Tension	Code
1	Bin thermostat				23421
2	Evaporator thermostat				23591
3	Timer			1-4-5	23247
3	Timer			2-6	23222
4	Condenser pressure switch		A		23175
5	Contacteur				23147
6	Pressure switch (maximum pressure)				23342
7	Orange led				23100
8	Anti radio interference filter		A	1-5	23459
9	Water condenser		W		14285
10	Pressure valve		W		20149
11	Solid core drier				14084
12	Suction fan 254/31°		A		20031
13	Lower fan motor		A	1-4-5	23067
13	Lower fan motor		A	2-6	23580
14	Compressor	R404A		1	23489
14	Compressor	R404A		2	23527
14	Compressor	R404A		4-6	23563
14	Compressor	R404A		5	23453
14	Compressor	R22		1	23150
14	Compressor	R22		2	23433
14	Compressor	R22		4	23288
14	Compressor	R22		5	23289
14	Compressor	R22		6	23434
15	Vacuum- charge valve body				14007
16	Vacuum-charge valve device				14005
17	Vacuum-charge valve plug				14006
18	Fan motor		A		23121
19	Evaporator				D10214
20	Suction fan 275-34°		A		20153
21	Air condenser		A		20406

Note: 20. Code 20031 (A) until number 25179. Code 20153 (A) from number 25180.
 21. Code 20197 (A) until number 25179. Code 20406 (A) from number 25180.
 9.Code 14285 from 16/02/93. Before Code 14109.