

POT WASHER

SIMPLE BODY VERSION
ELECTRONICAL SWITCHES
LOWER AND UPPER WASHING

TYPE: 19ER

Accessories
BOOSTER PUMP
DVGW
DETERGENT DISPENSER
DRAIN PUMP

Service Manual



1. Spare parts

General body parts.....	7
Lockup system	9
LP3E Control panel and switches.....	11
Electric control components.....	13
Solenoid valve group	15
Booster pump.....	17
DVGW	19
Rinse aid dispenser group.....	21
Boiler group	23
3 ways connection	25
Wash pump	27
Dosing detergent group.....	29
Dosing detergent group.....	31
Drain pump group.....	33
Pressure switch group with air trap ...	35
Turret group with rotating arms	37

1.1 Voltage codes

Voltage	Voltage code
A	3/N/PE~400/230V 50Hz
B	~250V 16A 50Hz
C	3/N/PE~380/220V 50Hz
D	3/PE~200V 50-60Hz
F	2/PE 220-240V 50Hz
G	3/N/PE~415/240V 50Hz
H	3/PE~230V 50Hz
I	3/PE~220V 60Hz
J	3/PE~380 50Hz
K	3/PE~400V 50Hz
L	3/PE~415V 50Hz
M	3/PE~440V 60Hz
N	3/PE~460V 60Hz
O	3/PE~480V 60Hz
P	1/N/PE~220-240V 50Hz
R	2/PE~220-230V 60Hz
S	3/N/PE~400/230V 50Hz
T	3/PE~230V 60Hz
U	1/N/PE~100V 50-60Hz

1.2 Product codes

Product code	Full name
Model codes	
mc	SIMPLE BODY VERSION
e	ELECTRONICAL SWITCHES
uw	LOWER AND UPPER WASHING
Type codes	
19ER	19ER
Accessory codes	
bp	BOOSTER PUMP
dvgw	DVGW
dd	DETERGENT DISPENSER
dp	DRAIN PUMP

Spare parts

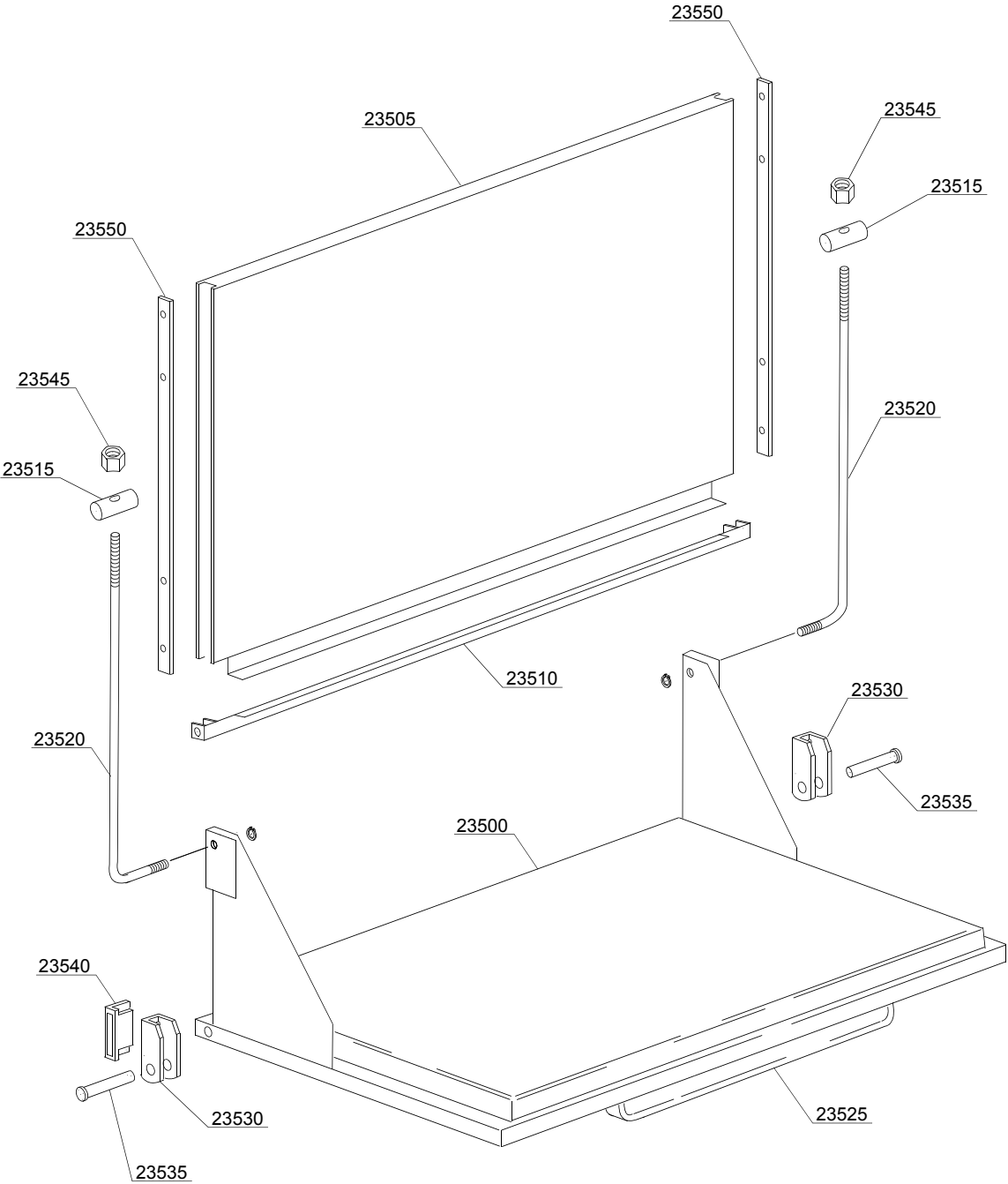
ID	P-code	Type	Date from	Date to	Accessory	Description
Module:General body parts						
22600	88907	19ER				Back panel
22605	88900	19ER				Body
22610	88301	19ER				Tank back filter
22615	88300	19ER				Tank front filter
22620	88302	19ER				Filter basket
22625	80931	19ER				Chimney splash guard
22630	88922	19ER				Upper door splash guard
22635	80936	19ER				Right splash guard
22640	80937	19ER				Left splash guard
22645	88912	19ER				Right internal slide
22650	88911	19ER				Left internal slide
22655	88901	19ER				Tank
22660	88902	19ER				Base
22665	88903	19ER				Right lower panel
22670	88904	19ER				Left lower panel
22675	80116	19ER				Foot 2" M65
22680	15613	19ER				Elbow 1¼"
22685	C109	19ER				Stainless steel basket with wheels
22690	30001010	19ER				6/6,53KW 230/240/3 heating element
22695	88114	19ER				Plug 12 mm
22700	80230	19ER				Reed-holder
22705	2000309	19ER				Sensor
22710	10200171	19ER				Gasket 17x25x2
22715	22214	19ER				Nut
22720	11600019	19ER				Terminal overflow pipe
22725	88942	19ER				Overflow pipe
22730	11600002	19ER				Flange O-ring

mc=SIMPLE BODY VERSION, em=ELECTROMECHANICAL SWITCHES, e=ELECTRONICAL SWITCHES,
uw=LOWER AND UPPER WASHING

19ER=19ER

bp=BOOSTER PUMP, dvgw=DVGW, dd=DETERGENT DISPENSER, dp=DRAIN PUMP

A=3/N/PE~400/230V 50Hz, B=~250V 16A 50Hz, C=3/N/PE~380/220V 50Hz, D=3/PE~200V 50-60Hz, F=2/PE 220-240V 50Hz, G=3/N/PE~415/240V 50Hz, H=3/PE~230V 50Hz, I=3/PE~220V 60Hz, J=3/PE~380 50Hz, K=3/PE~400V 50Hz, L=3/PE~415V 50Hz, M=3/PE~440V 60Hz, N=3/PE~460V 60Hz, O=3/PE~480V 60Hz, P=1/N/PE~220-240V 50Hz, R=2/PE~220-230V 60Hz, S=3/N/PE~400/230V 50Hz, T=3/PE~230V 60Hz, U=1/N/PE~100V 50-60Hz



02_121_e

Spare parts

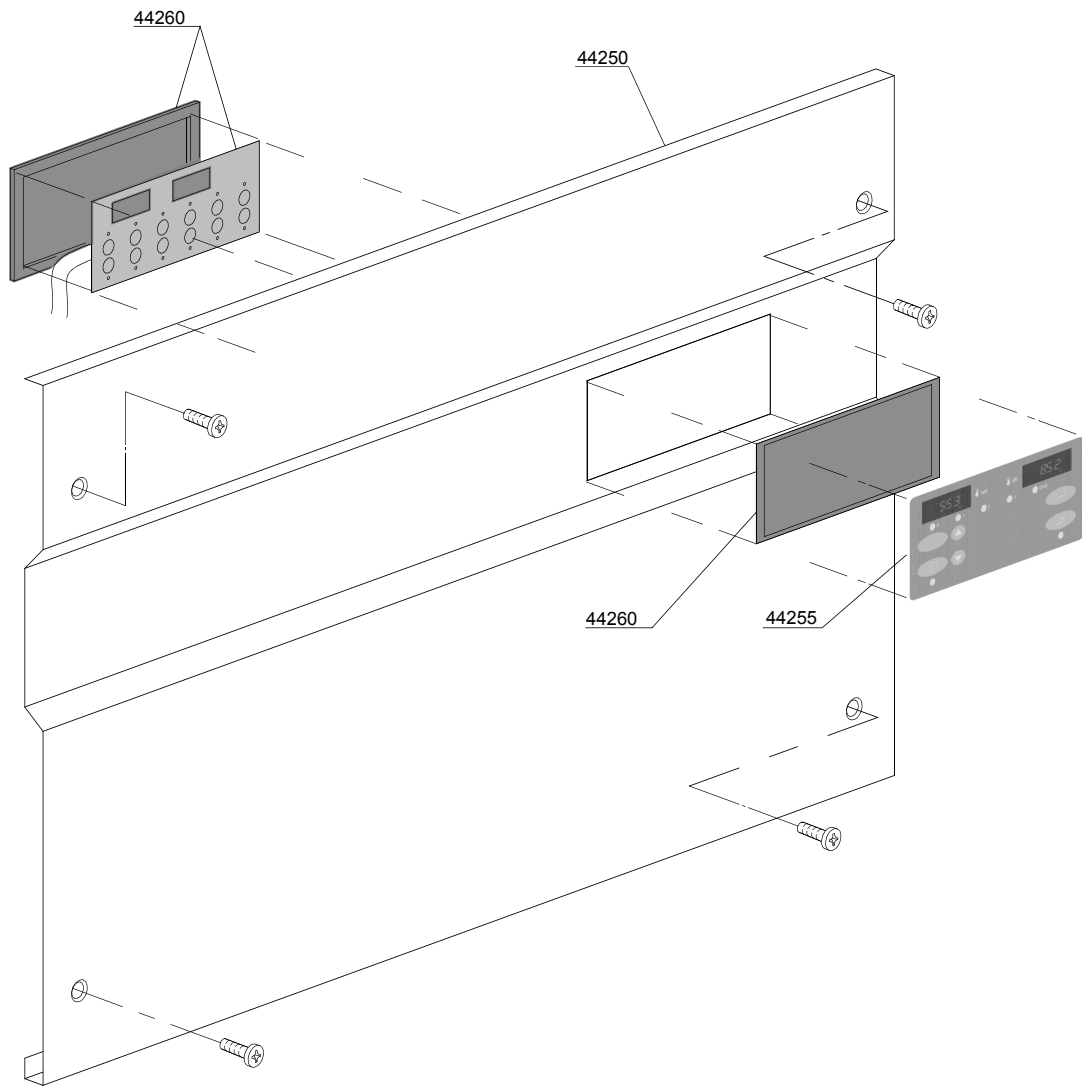
ID	P-code	Type	Date from	Date to	Accessory	Description
Module: Lockup system						
23500	88910	19ER				Door with steel handle
23505	88909	19ER				Upper door
23510	88928	19ER				Levers support
23515	22219	19ER				Pin
23520	22220	19ER				Door rod
23525	80750	19ER				Handle
23530	22206/B	19ER				Door hinge
23535	22220/A	19ER				Pin for door
23540	80232	19ER				Door magnet
23545	11721	19ER				Nut
23550	80700	19ER				Door guide

mc=SIMPLE BODY VERSION, em=ELECTROMECHANICAL SWITCHES, e=ELECTRONICAL SWITCHES,
uw=LOWER AND UPPER WASHING

19ER=19ER

bp=BOOSTER PUMP, dvgw=DVGW, dd=DETERGENT DISPENSER, dp=DRAIN PUMP

A=3/N/PE~400/230V 50Hz, B=~250V 16A 50Hz, C=3/N/PE~380/220V 50Hz, D=3/PE~200V 50-60Hz, F=2/PE 220-240V 50Hz, G=3/N/PE~415/240V 50Hz, H=3/PE~230V 50Hz, I=3/PE~220V 60Hz, J=3/PE~380 50Hz, K=3/PE~400V 50Hz, L=3/PE~415V 50Hz, M=3/PE~440V 60Hz, N=3/PE~460V 60Hz, O=3/PE~480V 60Hz, P=1/N/PE~220-240V 50Hz, R=2/PE~220-230V 60Hz, S=3/N/PE~400/230V 50Hz, T=3/PE~230V 60Hz, U=1/N/PE~100V 50-60Hz



03_051_e

Spare parts

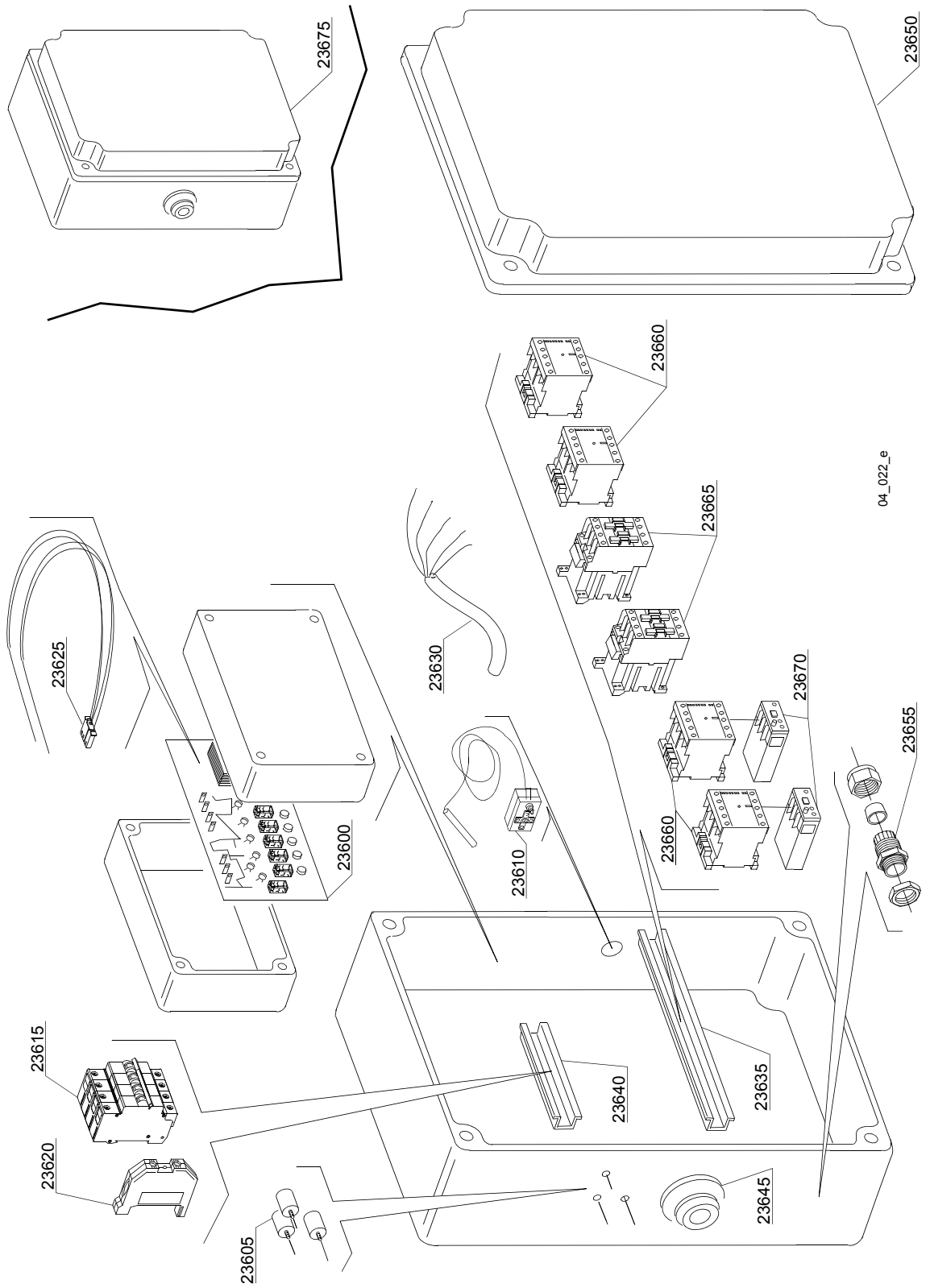
ID	P-code	Type	Date from	Date to	Accessory	Description
Module:LP4E Control panel and switches						
44250	88944	19ER				Stainless steel control panel
44255	50571	19ER			dp	Silkscreen processed grill membrane push button-driven dp+ws
44255	50572	19ER				Silkscreen processed grill membrane push button-driven
44255	50575	19ER			dp	Neutral Silkscreen processed grill membrane push button-driven dp+ws
44255	50576	19ER				Neutral Silkscreen processed grill membrane push button-driven
44255	50578	19ER			dp	Silkscreen processed grill membrane push button-driven dp+ws
44255	50579	19ER				Silkscreen processed grill membrane push button-driven
44255	50577	19ER			dp	Bobek Silkscreen processed grill membrane push button-driven dp+ws
44260	50570	19ER				Complete membrane push button-driver
44260	50570/A	19ER				LP Complete membrane push button-driver L=1500

mc=SIMPLE BODY VERSION, em=ELECTROMECHANICAL SWITCHES, e=ELECTRONICAL SWITCHES,
uw=LOWER AND UPPER WASHING

19ER=19ER

bp=BOOSTER PUMP, dvgw=DVGW, dd=DETERGENT DISPENSER, dp=DRAIN PUMP

A=3/N/PE~400/230V 50Hz, B=~250V 16A 50Hz, C=3/N/PE~380/220V 50Hz, D=3/PE~200V 50-60Hz, F=2/PE 220-240V 50Hz, G=3/N/PE~415/240V 50Hz, H=3/PE~230V 50Hz, I=3/PE~220V 60Hz, J=3/PE~380 50Hz, K=3/PE~400V 50Hz, L=3/PE~415V 50Hz, M=3/PE~440V 60Hz, N=3/PE~460V 60Hz, O=3/PE~480V 60Hz, P=1/N/PE~220-240V 50Hz, R=2/PE~220-230V 60Hz, S=3/N/PE~400/230V 50Hz, T=3/PE~230V 60Hz, U=1/N/PE~100V 50-60Hz



04_022_e

Spare parts

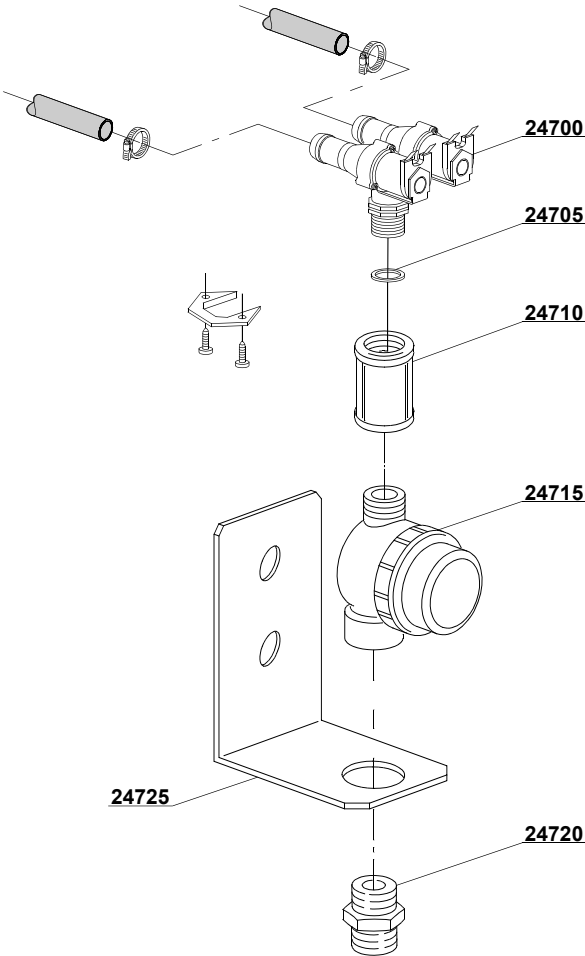
ID	P-code	Type	Date from	Date to	Accessory	Description
Module:Electric control components						
23600	50556	19ER				Timer
23605	15149	19ER				Filter F3
23610	2000430	19ER				Thermostat
23615	2000411	19ER				Automatic fuse C32
23620	10300401	19ER				Clamp
23625	50563	19ER				Sensor
23630	80200	19ER				Power supply cable 5x4x3400
23630	75359	19ER				4x6 flame-retardant cable
23635	80408	19ER				L=345mm slide
23640	80409	19ER				L=140mm slide
23645	80417	19ER				Lead through rubber
23650	80407	19ER				Plastic box
23655	80414	19ER				Cable-press
23655	80415	19ER				Cable-press
23655	80416	19ER				Cable-press
23660	15086	19ER				Contacteur 230 V
23665	10300050	19ER				Contacteur 25A/12A 4NA 230V
23670	88112	19ER				4,5-7,5A RF9 temperature relay
23675	88100/A	19ER				Complet electric box
23675	88100	19ER				Complet electric box

mc=SIMPLE BODY VERSION, em=ELECTROMECHANICAL SWITCHES, e=ELECTRONICAL SWITCHES,
uw=LOWER AND UPPER WASHING

19ER=19ER

bp=BOOSTER PUMP, dvgw=DVGW, dd=DETERGENT DISPENSER, dp=DRAIN PUMP

A=3/N/PE~400/230V 50Hz, B=~250V 16A 50Hz, C=3/N/PE~380/220V 50Hz, D=3/PE~200V 50-60Hz, F=2/PE 220-240V 50Hz, G=3/N/PE~415/240V 50Hz, H=3/PE~230V 50Hz, I=3/PE~220V 60Hz, J=3/PE~380 50Hz, K=3/PE~400V 50Hz, L=3/PE~415V 50Hz, M=3/PE~440V 60Hz, N=3/PE~460V 60Hz, O=3/PE~480V 60Hz, P=1/N/PE~220-240V 50Hz, R=2/PE~220-230V 60Hz, S=3/N/PE~400/230V 50Hz, T=3/PE~230V 60Hz, U=1/N/PE~100V 50-60Hz



05_006_e

Spare parts

ID	P-code	Type	Date from	Date to	Accessory	Description
Module:Solenoid valve group						
24700	30001001	19ER				Solenoid valve
24705	N.C.	19ER				Pression reducing valve
24710	80275	19ER				Pipe coupling
24715	2000121	19ER				Filter
24720	12025	19ER				Coupling
24725	22236	19ER				Support

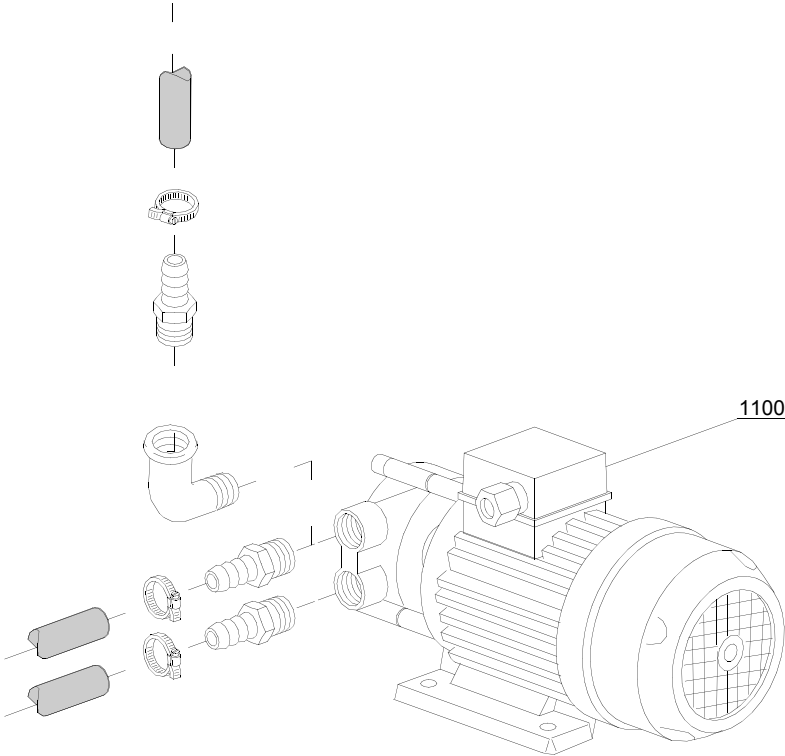
mc=SIMPLE BODY VERSION, em=ELECTROMECHANICAL SWITCHES, e=ELECTRONICAL SWITCHES,
uw=LOWER AND UPPER WASHING

19ER=19ER

bp=BOOSTER PUMP, dvgw=DVGW, dd=DETERGENT DISPENSER, dp=DRAIN PUMP

A=3/N/PE~400/230V 50Hz, B=~250V 16A 50Hz, C=3/N/PE~380/220V 50Hz, D=3/PE~200V 50-60Hz, F=2/PE 220-240V 50Hz, G=3/N/PE~415/240V 50Hz, H=3/PE~230V 50Hz, I=3/PE~220V 60Hz, J=3/PE~380 50Hz, K=3/PE~400V 50Hz, L=3/PE~415V 50Hz, M=3/PE~440V 60Hz, N=3/PE~460V 60Hz, O=3/PE~480V 60Hz, P=1/N/PE~220-240V 50Hz, R=2/PE~220-230V 60Hz, S=3/N/PE~400/230V 50Hz, T=3/PE~230V 60Hz, U=1/N/PE~100V 50-60Hz

07_002_e



Spare parts

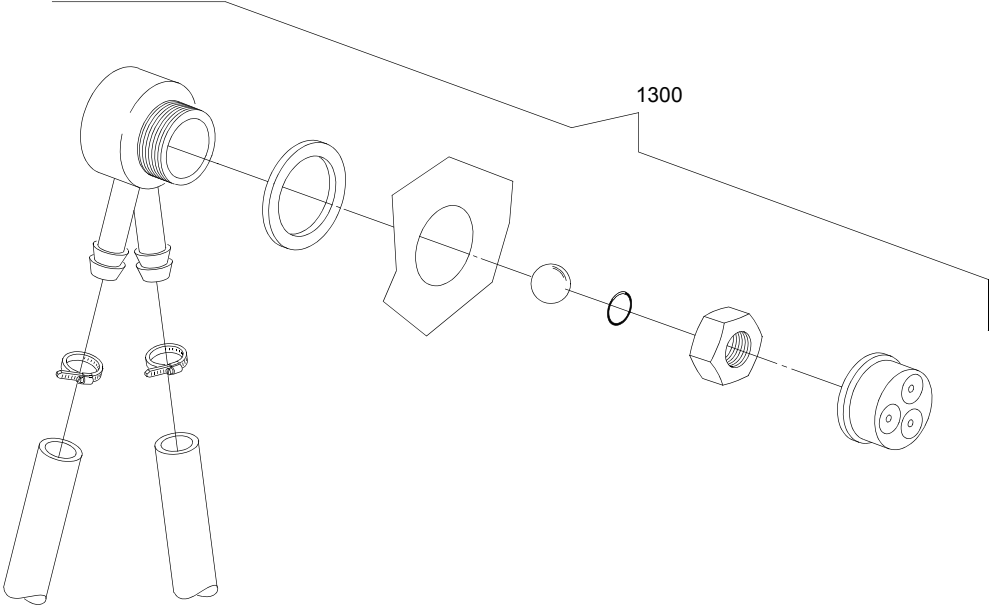
ID	P-code	Type	Date from	Date to	Accessory	Description
Module:Booster pump						
1100	15100	19ER			bp	Booster pump 230V

mc=SIMPLE BODY VERSION, em=ELECTROMECHANICAL SWITCHES, e=ELECTRONICAL SWITCHES,
uw=LOWER AND UPPER WASHING

19ER=19ER

bp=BOOSTER PUMP, dvgw=DVGW, dd=DETERGENT DISPENSER, dp=DRAIN PUMP

A=3/N/PE~400/230V 50Hz, B=~250V 16A 50Hz, C=3/N/PE~380/220V 50Hz, D=3/PE~200V 50-60Hz, F=2/PE 220-240V 50Hz, G=3/N/PE~415/240V 50Hz, H=3/PE~230V 50Hz, I=3/PE~220V 60Hz, J=3/PE~380 50Hz, K=3/PE~400V 50Hz, L=3/PE~415V 50Hz, M=3/PE~440V 60Hz, N=3/PE~460V 60Hz, O=3/PE~480V 60Hz, P=1/N/PE~220-240V 50Hz, R=2/PE~220-230V 60Hz, S=3/N/PE~400/230V 50Hz, T=3/PE~230V 60Hz, U=1/N/PE~100V 50-60Hz



08_005_e

Spare parts

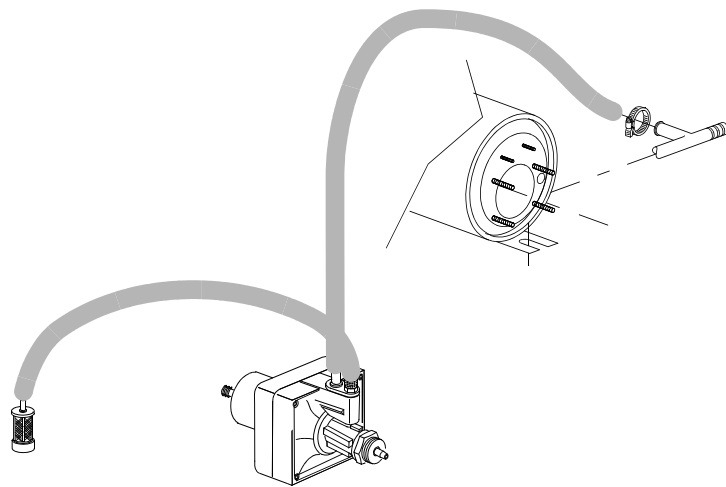
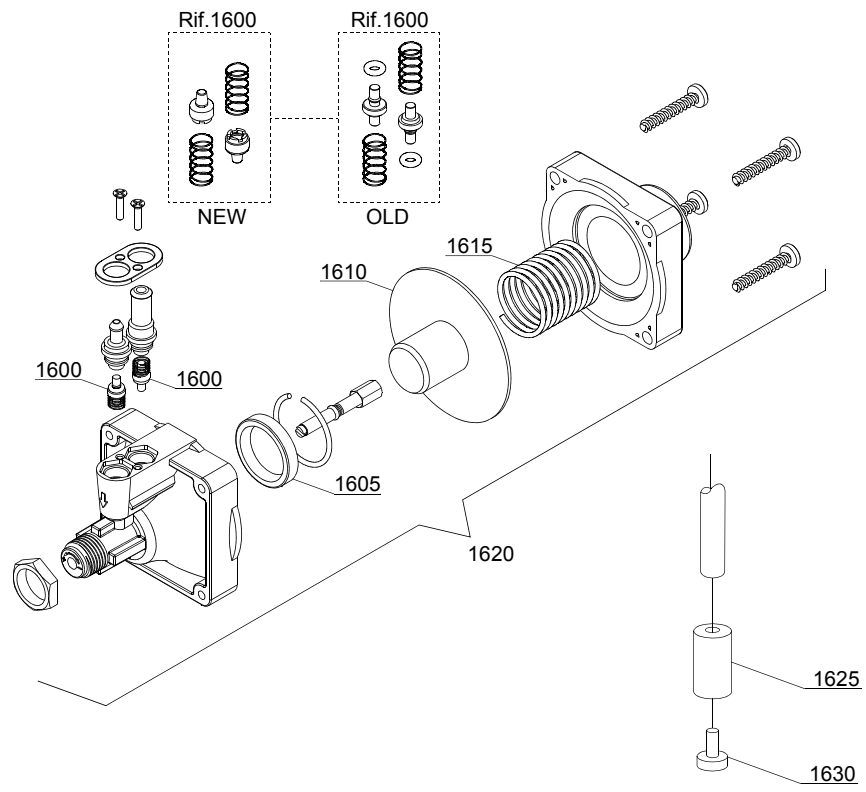
ID	P-code	Type	Date from	Date to	Accessory	Description
Module:DVGW						
1300	999900006	19ER			dvgw	DVGW assembly

mc=SIMPLE BODY VERSION, em=ELECTROMECHANICAL SWITCHES, e=ELECTRONICAL SWITCHES,
uw=LOWER AND UPPER WASHING

19ER=19ER

bp=BOOSTER PUMP, dvgw=DVGW, dd=DETERGENT DISPENSER, dp=DRAIN PUMP

A=3/N/PE~400/230V 50Hz, B=~250V 16A 50Hz, C=3/N/PE~380/220V 50Hz, D=3/PE~200V 50-60Hz, F=2/PE 220-240V 50Hz, G=3/N/PE~415/240V 50Hz, H=3/PE~230V 50Hz, I=3/PE~220V 60Hz, J=3/PE~380 50Hz, K=3/PE~400V 50Hz, L=3/PE~415V 50Hz, M=3/PE~440V 60Hz, N=3/PE~460V 60Hz, O=3/PE~480V 60Hz, P=1/N/PE~220-240V 50Hz, R=2/PE~220-230V 60Hz, S=3/N/PE~400/230V 50Hz, T=3/PE~230V 60Hz, U=1/N/PE~100V 50-60Hz



10_003_e

Spare parts

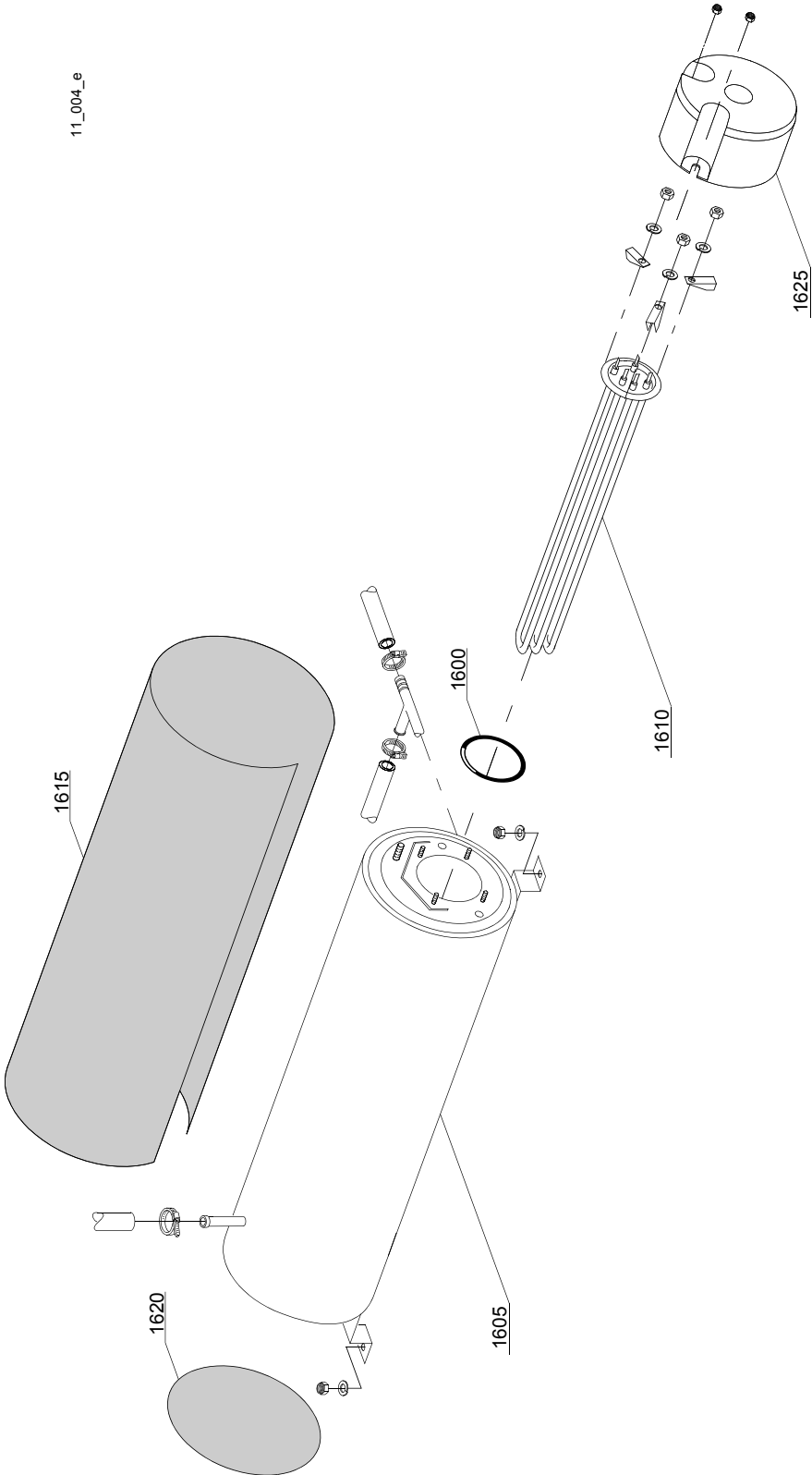
ID	P-code	Type	Date from	Date to	Accessory	Description
Module: Rinse aid dispenser group						
1600	10805	19ER				Tecnopro non return valve
1605	10806	19ER				Ø22 O-ring
1610	10807	19ER				Membrane
1615	10808	19ER				Spring
1620	10599999	19ER				Rinse aid pump
1625	12525	19ER				Counter-weight
1630	15058	19ER				Suction filter

mc=SIMPLE BODY VERSION, em=ELECTROMECHANICAL SWITCHES, e=ELECTRONICAL SWITCHES,
uw=LOWER AND UPPER WASHING

19ER=19ER

bp=BOOSTER PUMP, dvgw=DVGW, dd=DETERGENT DISPENSER, dp=DRAIN PUMP

A=3/N/PE~400/230V 50Hz, B=~250V 16A 50Hz, C=3/N/PE~380/220V 50Hz, D=3/PE~200V 50-60Hz, F=2/PE 220-240V 50Hz, G=3/N/PE~415/240V 50Hz, H=3/PE~230V 50Hz, I=3/PE~220V 60Hz, J=3/PE~380 50Hz, K=3/PE~400V 50Hz, L=3/PE~415V 50Hz, M=3/PE~440V 60Hz, N=3/PE~460V 60Hz, O=3/PE~480V 60Hz, P=1/N/PE~220-240V 50Hz, R=2/PE~220-230V 60Hz, S=3/N/PE~400/230V 50Hz, T=3/PE~230V 60Hz, U=1/N/PE~100V 50-60Hz



Spare parts

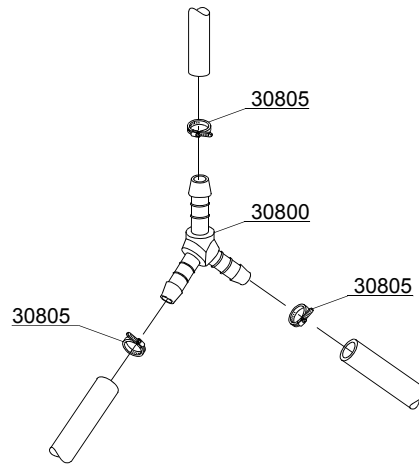
ID	P-code	Type	Date from	Date to	Accessory	Description
Module:Boiler group						
1600	13015	19ER				Gasket OR 6225
1605	80905	19ER				Boiler
1610	30001011	19ER				Heating element 9 kW
1610	30001011/A	19ER				12/13,07KW 230/240V 3 heating element
1615	30002030	19ER				Insulation boiler
1620	75205	19ER				Ø160 end piece
1625	75311	19ER				Casing

mc=SIMPLE BODY VERSION, em=ELECTROMECHANICAL SWITCHES, e=ELECTRONICAL SWITCHES,
uw=LOWER AND UPPER WASHING

19ER=19ER

bp=BOOSTER PUMP, dvgw=DVGW, dd=DETERGENT DISPENSER, dp=DRAIN PUMP

A=3/N/PE~400/230V 50Hz, B=~250V 16A 50Hz, C=3/N/PE~380/220V 50Hz, D=3/PE~200V 50-60Hz, F=2/PE 220-240V 50Hz, G=3/N/PE~415/240V 50Hz, H=3/PE~230V 50Hz, I=3/PE~220V 60Hz, J=3/PE~380 50Hz, K=3/PE~400V 50Hz, L=3/PE~415V 50Hz, M=3/PE~440V 60Hz, N=3/PE~460V 60Hz, O=3/PE~480V 60Hz, P=1/N/PE~220-240V 50Hz, R=2/PE~220-230V 60Hz, S=3/N/PE~400/230V 50Hz, T=3/PE~230V 60Hz, U=1/N/PE~100V 50-60Hz



12_003ae

Spare parts

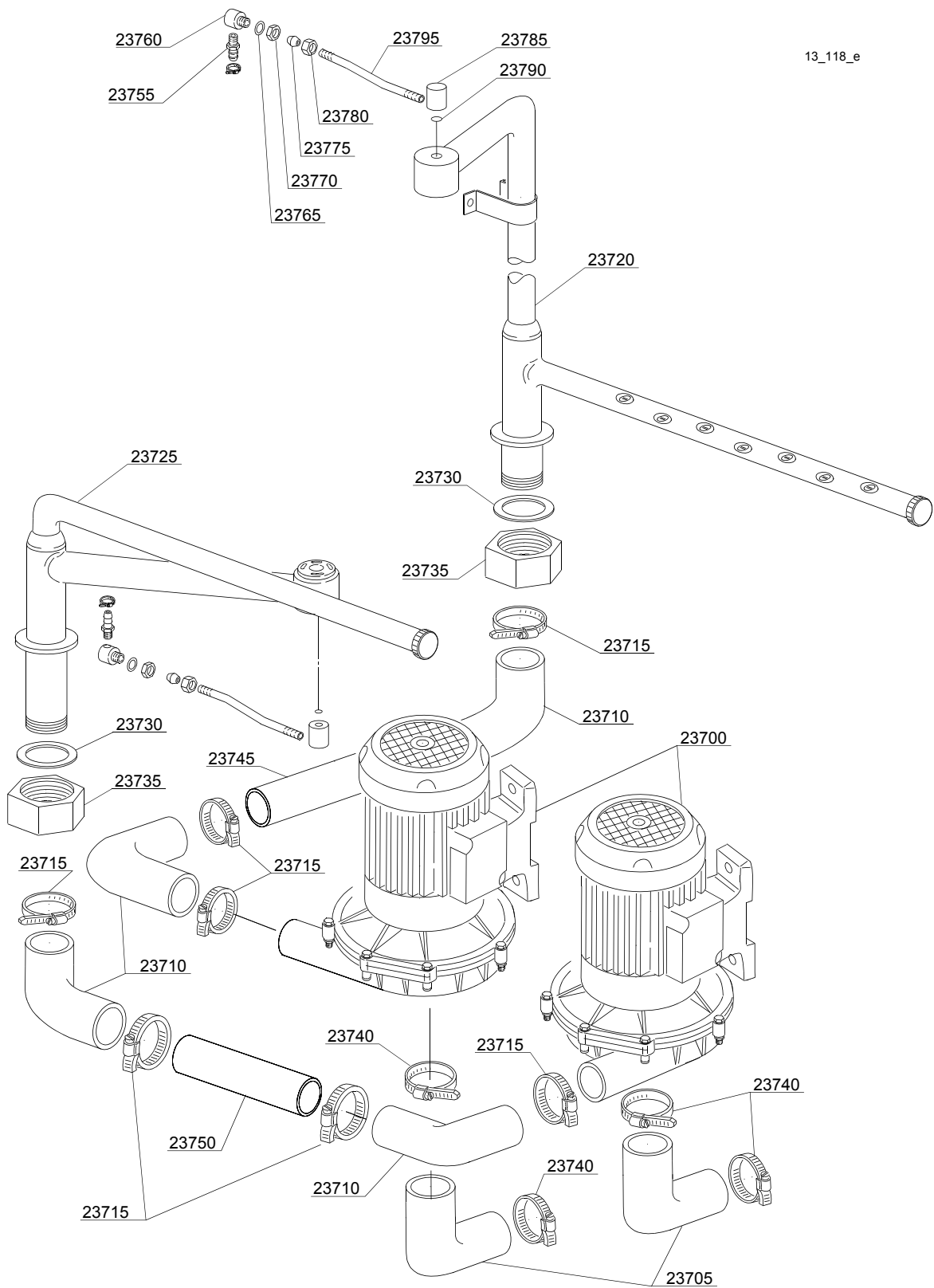
ID	P-code	Type	Date from	Date to	Accessory	Description
Module:3 ways connection						
30800	540091	19ER				Ø12 mm plastic 3 ways connection
30805	11807	19ER				Clamp 12-22

mc=SIMPLE BODY VERSION, em=ELECTROMECHANICAL SWITCHES, e=ELECTRONICAL SWITCHES,
uw=LOWER AND UPPER WASHING

19ER=19ER

bp=BOOSTER PUMP, dvgw=DVGW, dd=DETERGENT DISPENSER, dp=DRAIN PUMP

A=3/N/PE~400/230V 50Hz, B=~250V 16A 50Hz, C=3/N/PE~380/220V 50Hz, D=3/PE~200V 50-60Hz, F=2/PE 220-240V 50Hz, G=3/N/PE~415/240V 50Hz, H=3/PE~230V 50Hz, I=3/PE~220V 60Hz, J=3/PE~380 50Hz, K=3/PE~400V 50Hz, L=3/PE~415V 50Hz, M=3/PE~440V 60Hz, N=3/PE~460V 60Hz, O=3/PE~480V 60Hz, P=1/N/PE~220-240V 50Hz, R=2/PE~220-230V 60Hz, S=3/N/PE~400/230V 50Hz, T=3/PE~230V 60Hz, U=1/N/PE~100V 50-60Hz



13_118_e

Spare parts

ID	P-code	Type	Date from	Date to	Accessory	Description
Module: Wash pump						
23700	88106	19ER				2,7Hp wash pump
23705	3002020	19ER				Suction elbow
23710	15032/B	19ER				Suction pipe coupling
23715	11824	19ER				50/70 clamp
23720	88121	19ER				Top wash ramp
23725	88122	19ER				Lower wash ramp
23730	10200173/A	19ER				O-ring
23735	88127	19ER				Ramp fixing nut
23740	2902491	19ER				Clamp 60-80
23745	88123	19ER				63,5x90mm Pipe coupling
23750	88124	19ER				75x130mm pipe coupling
23755	12005	19ER				Rubber holder ¼
23760	80231	19ER				Pipe fitting
23765	10200171	19ER				Gasket 17x25x2
23770	10200101	19ER				Nut
23775	10200182	19ER				Cone
23780	10600016	19ER				Nut
23785	10600202	19ER				Coupling
23790	13009	19ER				OR 2050 NBR O-ring
23795	88118	19ER				Upper rinse duct

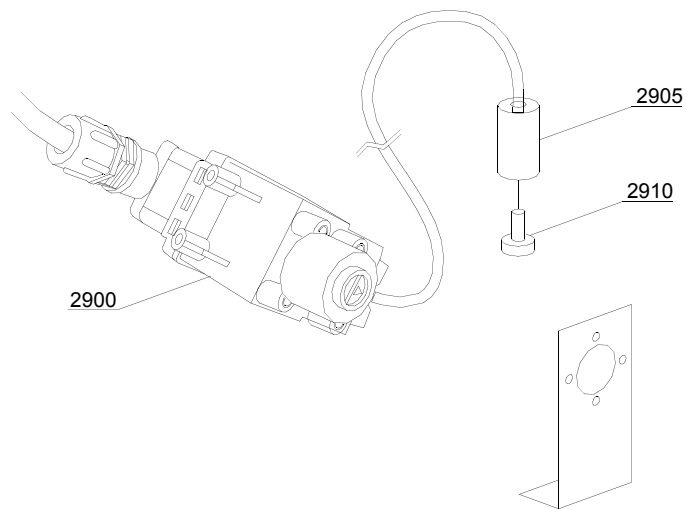
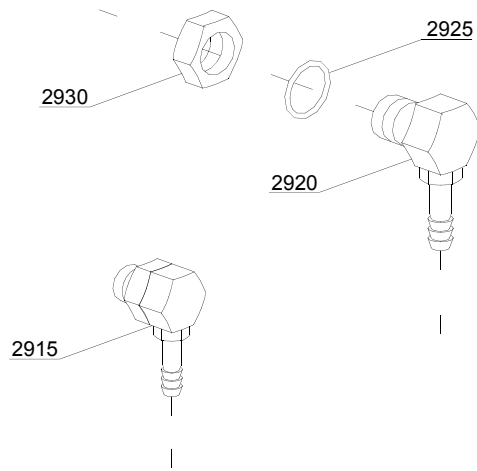
mc=SIMPLE BODY VERSION, em=ELECTROMECHANICAL SWITCHES, e=ELECTRONICAL SWITCHES,
uw=LOWER AND UPPER WASHING

19ER=19ER

bp=BOOSTER PUMP, dvgw=DVGW, dd=DETERGENT DISPENSER, dp=DRAIN PUMP

A=3/N/PE~400/230V 50Hz, B=~250V 16A 50Hz, C=3/N/PE~380/220V 50Hz, D=3/PE~200V 50-60Hz, F=2/PE 220-240V 50Hz, G=3/N/PE~415/240V 50Hz, H=3/PE~230V 50Hz, I=3/PE~220V 60Hz, J=3/PE~380 50Hz, K=3/PE~400V 50Hz, L=3/PE~415V 50Hz, M=3/PE~440V 60Hz, N=3/PE~460V 60Hz, O=3/PE~480V 60Hz, P=1/N/PE~220-240V 50Hz, R=2/PE~220-230V 60Hz, S=3/N/PE~400/230V 50Hz, T=3/PE~230V 60Hz, U=1/N/PE~100V 50-60Hz

14_002_e



Spare parts

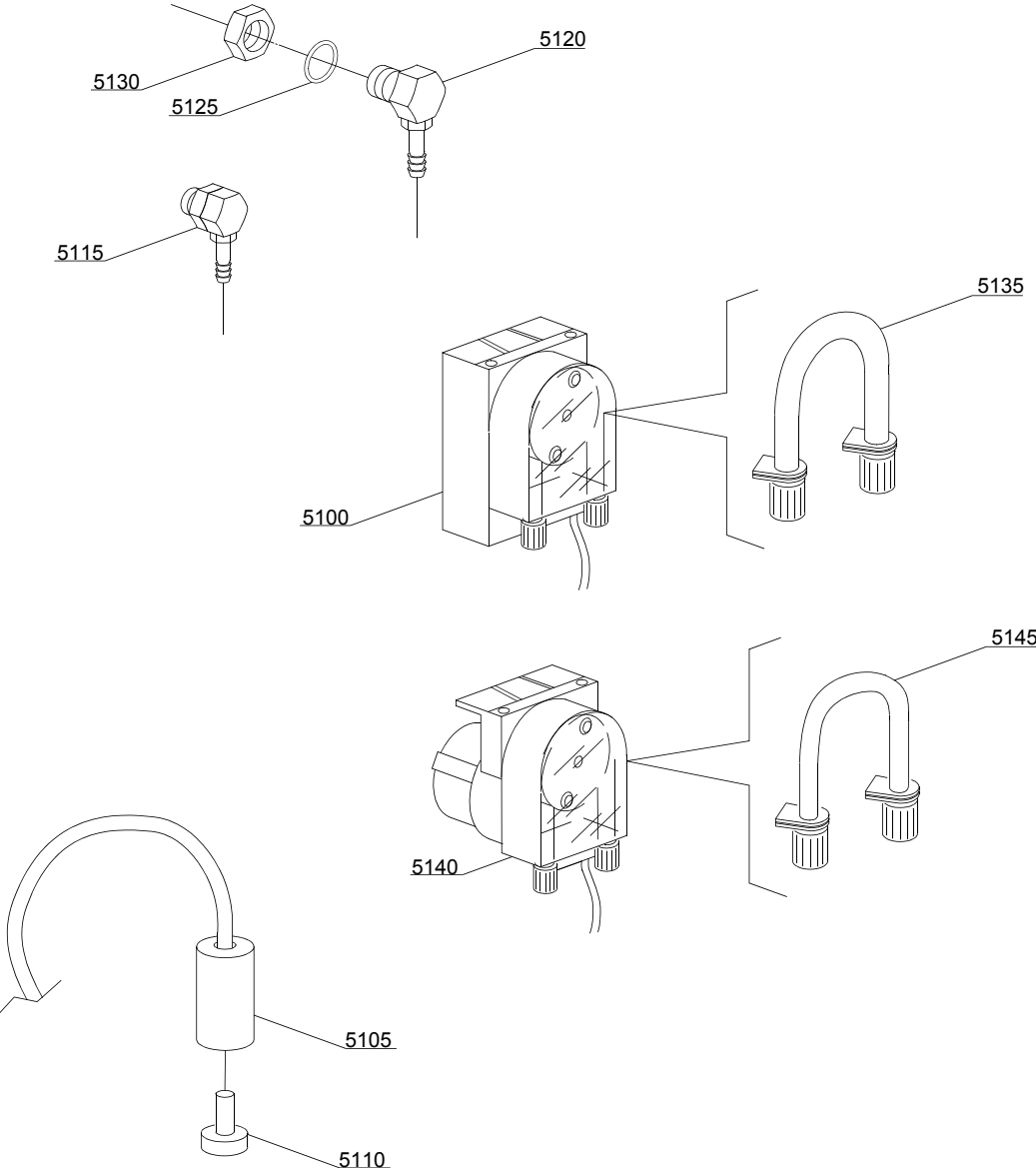
ID	P-code	Type	Date from	Date to	Accessory	Description
Module:Dosing detergent group						
2900	15108/L	19ER			dd	Lang detergent pump
2905	12525	19ER			dd	Counter-weight
2910	15058	19ER			dd	Suction filter
2915	15123	19ER			dd	Compleat plastic injector
2920	15148	19ER			dd	Steel injector
2925	15159	19ER			dd	OR O-ring
2930	10200205	19ER			dd	Nut m12x1

mc=SIMPLE BODY VERSION, em=ELECTROMECHANICAL SWITCHES, e=ELECTRONICAL SWITCHES,
uw=LOWER AND UPPER WASHING

19ER=19ER

bp=BOOSTER PUMP, dvgw=DVGW, dd=DETERGENT DISPENSER, dp=DRAIN PUMP

A=3/N/PE~400/230V 50Hz, B=~250V 16A 50Hz, C=3/N/PE~380/220V 50Hz, D=3/PE~200V 50-60Hz, F=2/PE 220-240V 50Hz, G=3/N/PE~415/240V 50Hz, H=3/PE~230V 50Hz, I=3/PE~220V 60Hz, J=3/PE~380 50Hz, K=3/PE~400V 50Hz, L=3/PE~415V 50Hz, M=3/PE~440V 60Hz, N=3/PE~460V 60Hz, O=3/PE~480V 60Hz, P=1/N/PE~220-240V 50Hz, R=2/PE~220-230V 60Hz, S=3/N/PE~400/230V 50Hz, T=3/PE~230V 60Hz, U=1/N/PE~100V 50-60Hz



14_004_e

Spare parts

ID	P-code	Type	Date from	Date to	Accessory	Description
Module:Dosing detergent group						
5100	15985	19ER			dd	Seko detergent pump
5105	12525	19ER			dd	Counter-weight
5110	15058	19ER			dd	Small filter
5115	15123	19ER			dd	Complet plastic injector
5120	15148	19ER			dd	Steel injector
5125	15159	19ER			dd	OR O-ring
5130	10200205	19ER			dd	Nut m12x1
5135	15185	19ER			dd	Seko thermoplastic pipe
5140	15985	19ER			dd	Germac detergent pump
5145	15108/E	19ER			dd	Germac thermoplastic pipe

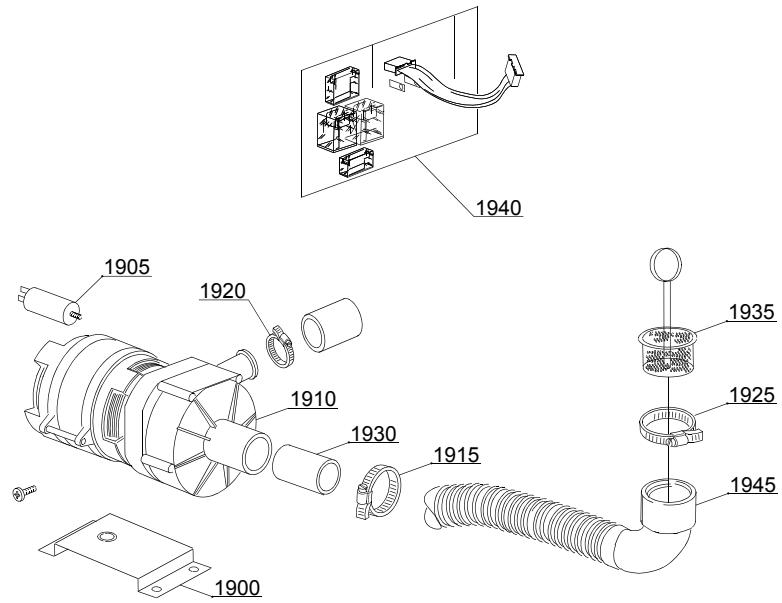
mc=SIMPLE BODY VERSION, em=ELECTROMECHANICAL SWITCHES, e=ELECTRONICAL SWITCHES,
uw=LOWER AND UPPER WASHING

19ER=19ER

bp=BOOSTER PUMP, dvgw=DVGW, dd=DETERGENT DISPENSER, dp=DRAIN PUMP

A=3/N/PE~400/230V 50Hz, B=~250V 16A 50Hz, C=3/N/PE~380/220V 50Hz, D=3/PE~200V 50-60Hz, F=2/PE 220-240V 50Hz, G=3/N/PE~415/240V 50Hz, H=3/PE~230V 50Hz, I=3/PE~220V 60Hz, J=3/PE~380 50Hz, K=3/PE~400V 50Hz, L=3/PE~415V 50Hz, M=3/PE~440V 60Hz, N=3/PE~460V 60Hz, O=3/PE~480V 60Hz, P=1/N/PE~220-240V 50Hz, R=2/PE~220-230V 60Hz, S=3/N/PE~400/230V 50Hz, T=3/PE~230V 60Hz, U=1/N/PE~100V 50-60Hz

15_003_e



Spare parts

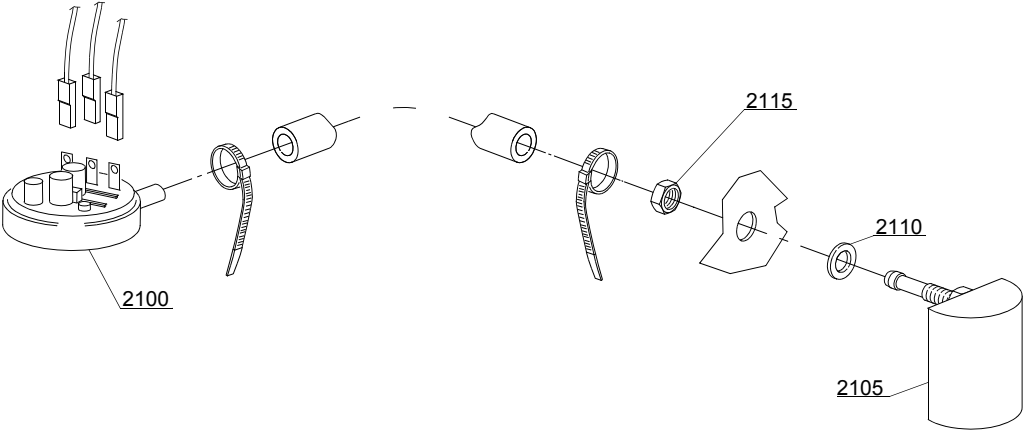
ID	P-code	Type	Date from	Date to	Accessory	Description
Module:Drain pump group						
1900	440122	19ER			dp	Pump support
1905	10702	19ER			dp	5 Uf Condenser
1910	10501/A	19ER			dp	190W 230V drain pump
1915	11806	19ER			dp	25/40 clamp
1920	11836	19ER			dp	20/32 clamp
1925	11809	19ER			dp	30/45 clamp
1930	18044	19ER			dp	Ø28 top wash pipe
1935	10200039	19ER			dp	Flow drain filter
1940	50567	19ER			dp	Relay card
1945	11600050	19ER			dp	Suction pipe

mc=SIMPLE BODY VERSION, em=ELECTROMECHANICAL SWITCHES, e=ELECTRONICAL SWITCHES,
uw=LOWER AND UPPER WASHING

19ER=19ER

bp=BOOSTER PUMP, dvgw=DVGW, dd=DETERGENT DISPENSER, dp=DRAIN PUMP

A=3/N/PE~400/230V 50Hz, B=~250V 16A 50Hz, C=3/N/PE~380/220V 50Hz, D=3/PE~200V 50-60Hz, F=2/PE 220-240V 50Hz, G=3/N/PE~415/240V 50Hz, H=3/PE~230V 50Hz, I=3/PE~220V 60Hz, J=3/PE~380 50Hz, K=3/PE~400V 50Hz, L=3/PE~415V 50Hz, M=3/PE~440V 60Hz, N=3/PE~460V 60Hz, O=3/PE~480V 60Hz, P=1/N/PE~220-240V 50Hz, R=2/PE~220-230V 60Hz, S=3/N/PE~400/230V 50Hz, T=3/PE~230V 60Hz, U=1/N/PE~100V 50-60Hz



16_001_e

Spare parts

ID	P-code	Type	Date from	Date to	Accessory	Description
Module:Pressure switch group with air trap						
2100	88110	19ER				Pressure switch
2105	80106	19ER				Air trap
2110	13301	19ER				Gasket 14x8x1,5
2115	11702	19ER				Nut M8

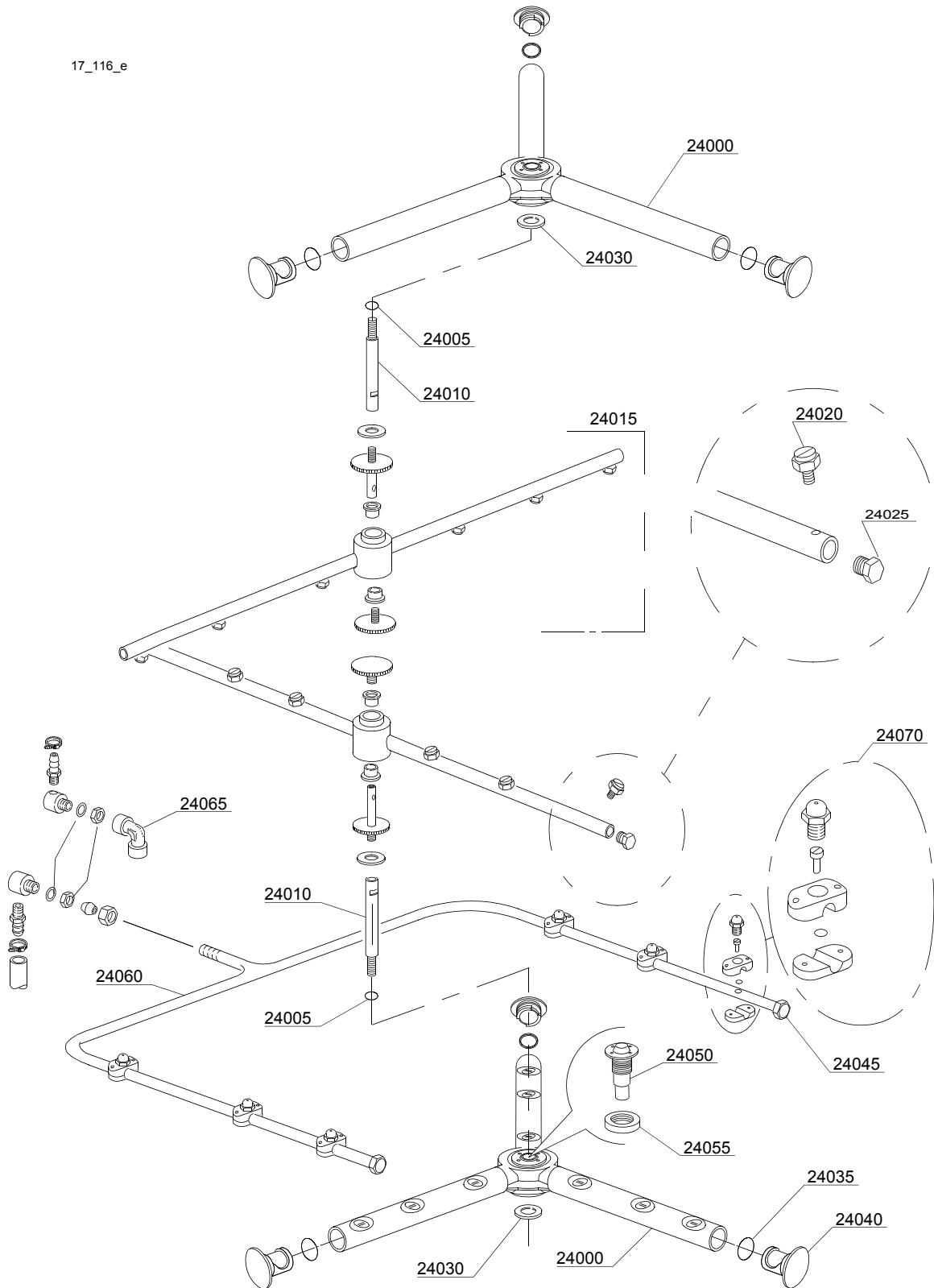
mc=SIMPLE BODY VERSION, em=ELECTROMECHANICAL SWITCHES, e=ELECTRONICAL SWITCHES,
uw=LOWER AND UPPER WASHING

19ER=19ER

bp=BOOSTER PUMP, dvgw=DVGW, dd=DETERGENT DISPENSER, dp=DRAIN PUMP

A=3/N/PE~400/230V 50Hz, B=~250V 16A 50Hz, C=3/N/PE~380/220V 50Hz, D=3/PE~200V 50-60Hz, F=2/PE 220-240V 50Hz, G=3/N/PE~415/240V 50Hz, H=3/PE~230V 50Hz, I=3/PE~220V 60Hz, J=3/PE~380 50Hz, K=3/PE~400V 50Hz, L=3/PE~415V 50Hz, M=3/PE~440V 60Hz, N=3/PE~460V 60Hz, O=3/PE~480V 60Hz, P=1/N/PE~220-240V 50Hz, R=2/PE~220-230V 60Hz, S=3/N/PE~400/230V 50Hz, T=3/PE~230V 60Hz, U=1/N/PE~100V 50-60Hz

17_116_e



Spare parts

ID	P-code	Type	Date from	Date to	Accessory	Description
Module:Turret group with rotating arms						
24000	90004	19ER				Upper/lower complet wash rotor
24005	13009	19ER				OR 2050 NBR O-ring
24010	80321	19ER				Top shaft
24015	90003	19ER				Rinse group
24020	560018	19ER				Stainless steel rinse nozzle
24025	560017	19ER				Rinse arm plug
24030	11600033	19ER				Flow reduction ring
24035	13023	19ER				O-ring
24040	3003029	19ER				Plug
24045	88114	19ER				Plug 12 mm
24050	88975	19ER				Hub for rotor
24055	75317	19ER				Nut for wash arm bearing
24060	88125	19ER				Hub for rotor
24065	12018	19ER				Elbow fitting 3/8 F-F
24070	2902795	19ER				Rinse nozzle

mc=SIMPLE BODY VERSION, em=ELECTROMECHANICAL SWITCHES, e=ELECTRONICAL SWITCHES,
uw=LOWER AND UPPER WASHING

19ER=19ER

bp=BOOSTER PUMP, dvgw=DVGW, dd=DETERGENT DISPENSER, dp=DRAIN PUMP

A=3/N/PE~400/230V 50Hz, B=~250V 16A 50Hz, C=3/N/PE~380/220V 50Hz, D=3/PE~200V 50-60Hz, F=2/PE 220-240V 50Hz, G=3/N/PE~415/240V 50Hz, H=3/PE~230V 50Hz, I=3/PE~220V 60Hz, J=3/PE~380 50Hz, K=3/PE~400V 50Hz, L=3/PE~415V 50Hz, M=3/PE~440V 60Hz, N=3/PE~460V 60Hz, O=3/PE~480V 60Hz, P=1/N/PE~220-240V 50Hz, R=2/PE~220-230V 60Hz, S=3/N/PE~400/230V 50Hz, T=3/PE~230V 60Hz, U=1/N/PE~100V 50-60Hz