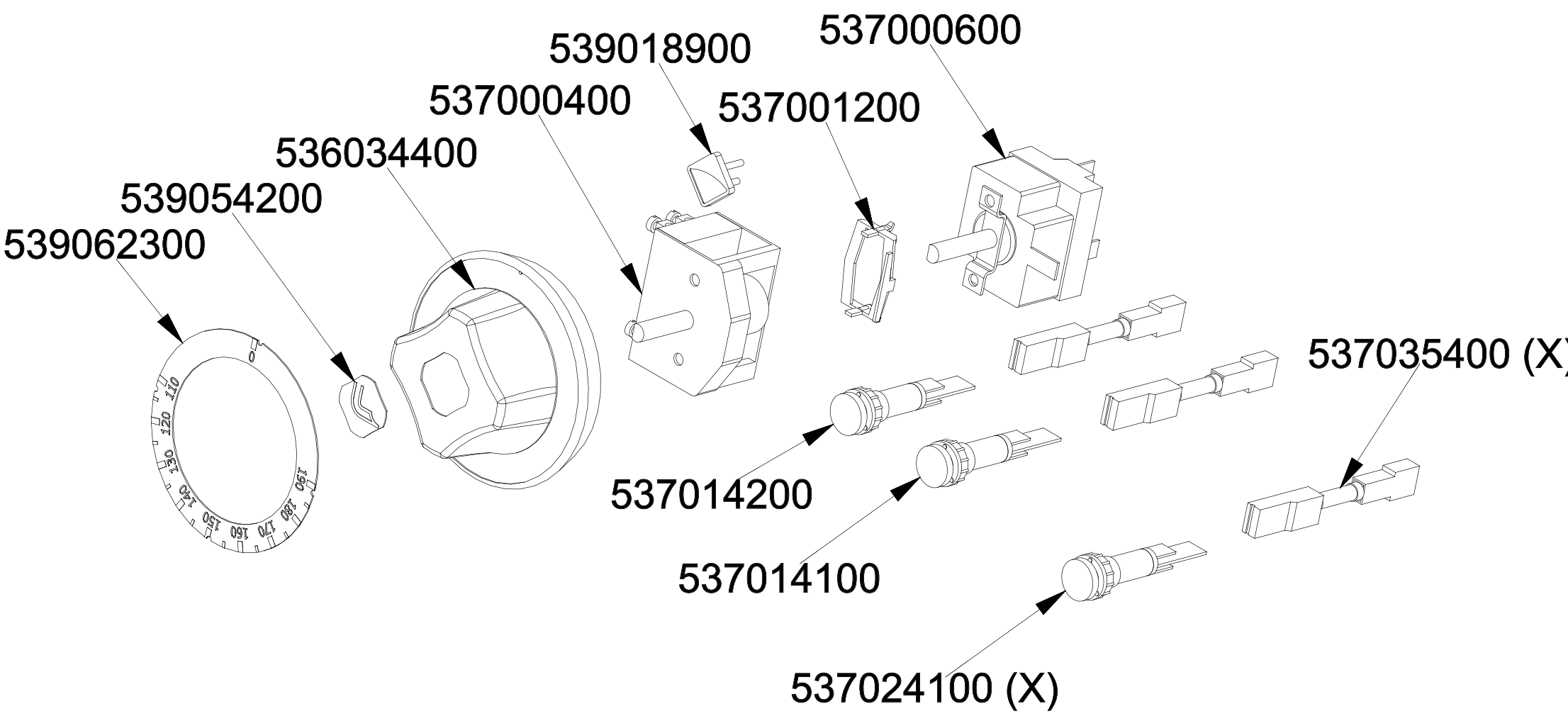


560111000 M00P00



560100200M01P00

| Page | Pos | Code      | Description                         |
|------|-----|-----------|-------------------------------------|
| 001  |     | 533094200 | S/S HANDLE FOR 70/90 SERIES         |
| 001  |     | 544462300 | TANK LID FOR F-70                   |
| 001  |     | 531053400 | BASKET FOR F2/8 G/E 121X301X150     |
| 001  |     | 531054100 | TANK FILTER/BASKET SUPPORT F2/8E 70 |
| 001  |     | 537032600 | ELEMENT F2/8 S70/90ROT.6000W 230V   |
| 001  |     | 541134000 | NEUTRAL LOW SPACER 74               |
| 001  |     | 536009800 | GASKET O-RING 47,22X3,53 VITON      |
| 001  |     | 536026700 | GASKET O-RING 74,61X3,53 VITON      |
| 001  |     | 537011500 | MICRO-SWITCH 10A 400V               |
| 001  |     | 541158000 | UPPER PLATE F2/ 8-74ET              |
| 001  |     | 537001400 | SAFETY THERMOSTAT 235°C THREEPHASE  |
| 001  |     | 537027400 | TERMINAL BLOCK THREEPHASE 40A       |
| 001  |     | 537010100 | REMOTE CONTROL SWITCH 20A 230V      |
| 001  |     | 544173500 | LEFT SIDE PANEL S.70                |
| 001  |     | 537036500 | TERMINAL BLOCK 4POLES 40A SCREW-SCR |
| 001  |     | 541140300 | CONTROL PANEL F2/ 8 -74E            |
| 001  |     | 533044401 | M8 THREADED CAP FOR SEC.THERMOSTAT  |
| 001  |     | 531018600 | BALL VALVE 1"G M-F CPM-62G          |
| 001  |     | 541047200 | FILTER FOR DRIP TRAY                |
| 001  |     | 541077100 | FILTER FOR DRIP TRAY 23L            |
| 001  |     | 536005200 | INOX LEG 2" 120-180 M10             |
| 001  |     | 544173400 | RIGHT SIDE PANEL S.70               |
| 002  |     | 544389300 | CONTROP.73 SX APP. LT               |
| 002  |     | 531007600 | DOOR HINGE                          |
| 002  |     | 544182501 | LEFT DOOR 73                        |
| 002  |     | 533094200 | S/S HANDLE FOR 70/90 SERIES         |
| 002  |     | 533035200 | HANDLE SPACER                       |
| 002  |     | 536000200 | D.12 H.4 BUMPER                     |
| 002  |     | 544389200 | CONTROP.73 DX APP. LT               |
| 002  |     | 544182401 | RIGHT DOOR 73                       |
| 002  |     | 544182101 | LEFT DOOR 74                        |
| 002  |     | 544389500 | INNER-DOOR OF LHD 74                |
| 002  |     | 544389400 | CONTROP.74 DX APP. LT               |
| 002  |     | 544182001 | RIGHT DOOR 74                       |
| 002  |     | 544497000 | PORTA 72 SX                         |
| 002  |     | 544497100 | CONTROP.72 SX APP. LT               |
| 002  |     | 544185101 | RIGHT DOOR 74 CF                    |
| 002  |     | 533107100 | HANDLE SPACER OF CF-70              |
| 002  |     | 544185500 | UPPER DOOR HINGE FOR COMPARTME CF70 |
| 002  |     | 531000900 | MAGNET \$22 KG.3 WITH DISK          |
| 002  |     | 544185201 | INNER DOOR * 74DX                   |
| 002  |     | 544185400 | LOWER DOOR HINGE FOR COMPARTME CF70 |
| 002  |     | 544663900 | LHD 74 DOOR FOR PCI                 |
| 002  |     | 544663800 | 74 LHD OVEN INNER DOOR FOUR PCI     |
| 002  |     | 544662700 | DOOR 74 DX PCI                      |
| 002  |     | 544662600 | CONTROP.74 DX APP. LT PCI           |
| 003  |     | 539062300 | RED STICKING DISK 72 (110,190°      |
| 003  |     | 539054200 | STAMP Ø20,5 CR."L" LOTUS R.         |
| 003  |     | 536034400 | KNOB \$77 4P. \$06*4,6 C/M          |
| 003  |     | 537000400 | COMMUTATOR 1POS.SINGLEPHASE S49 16A |
| 003  |     | 539018900 | INDEX FOR KNOB W/RED SIGN           |

| Page | Pos | Code      | Description                         |
|------|-----|-----------|-------------------------------------|
| 003  |     | 537001200 | FIXING BRACKET FOR THERMOSTAT/COMM. |
| 003  |     | 537000600 | THERMOSTAT 90-180°C SINGLEPHASE     |
| 003  |     | 537014200 | GREEN WARNING LIGHT 250V            |
| 003  |     | 537014100 | WHITE WARNING LIGHT 250V            |
| 004  |     | 536009800 | GASKET O-RING 47,22X3,53 VITON      |
| 004  |     | 536026700 | GASKET O-RING 74,61X3,53 VITON      |
| 004  |     | 537011500 | MICRO-SWITCH 10A 400V               |
| 005  |     | 537000600 | THERMOSTAT 90-180°C SINGLEPHASE     |
| 005  |     | 539018900 | INDEX FOR KNOB W/RED SIGN           |
| 005  |     | 537000400 | COMMUTATOR 1POS.SINGLEPHASE S49 16A |
| 005  |     | 537001200 | FIXING BRACKET FOR THERMOSTAT/COMM. |
| 005  |     | 536034400 | KNOB §77 4P. §06*4,6 C/M            |
| 005  |     | 539054200 | STAMP Ø20,5 CR."L" LOTUS R.         |
| 005  |     | 539062300 | RED STICKING DISK 72 (110,190°      |
| 005  |     | 537035400 | HEATING ELEMENT 00003W 330KOHM W/F  |
| 005  |     | 537014200 | GREEN WARNING LIGHT 250V            |
| 005  |     | 537014100 | WHITE WARNING LIGHT 250V            |
| 005  |     | 537024100 | RED WARNING LIGHT LOW BUD 110V      |