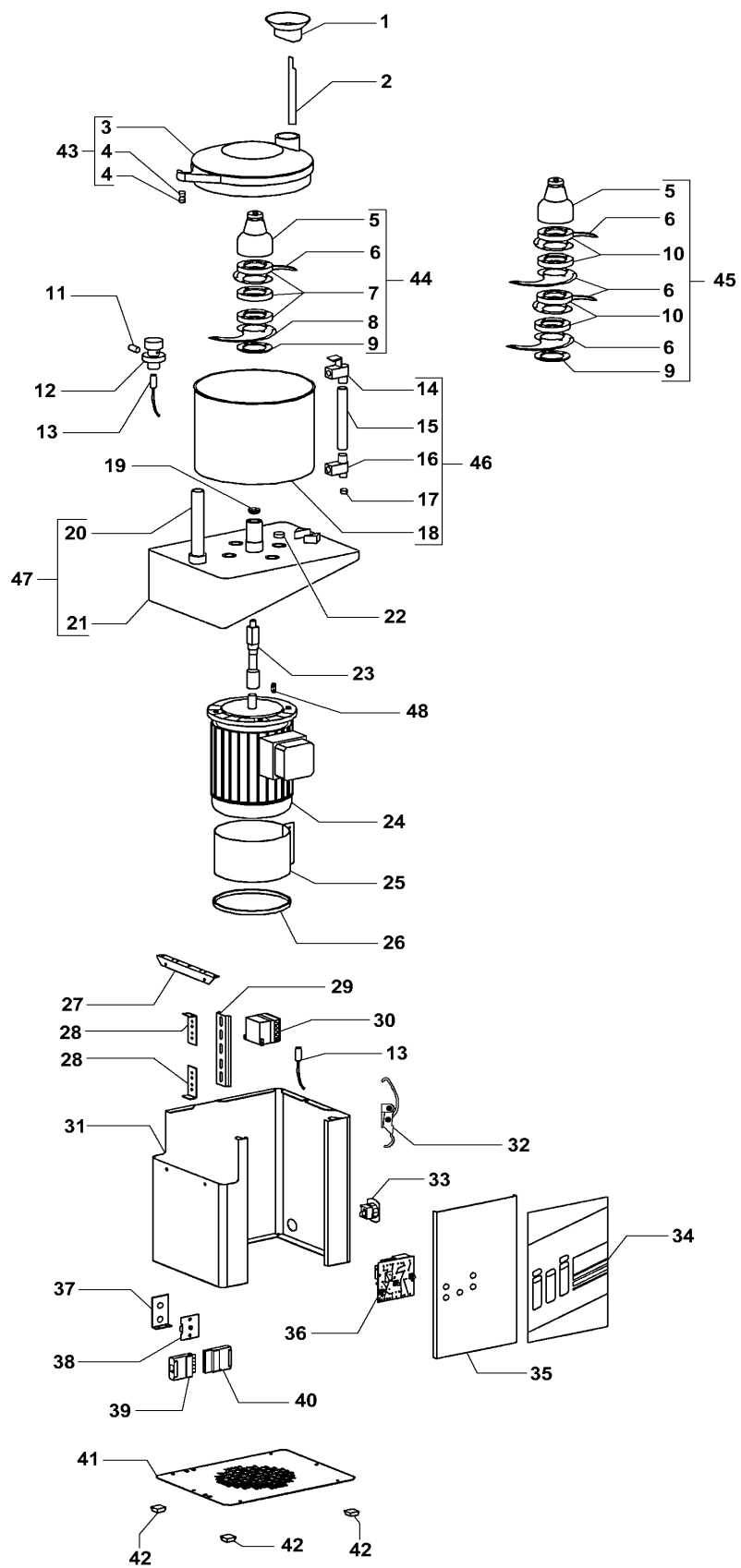


Cutter mod.CL/3-5-8
 Cutter mod.CL/3-5-8



CUTTER MOD.CL/3-5-8 CUTTER MOD.CL/3-5-8

RIF.	CODICE / CODE	DIN - UNI	DESCRIZIONE / DESCRIPTION
1	36Z6620		Tappo / Tap
2	35Q9130		Lama mod.CL/3 / Blade CL/3
2	35Q9120		Lama mod.CL/5-8 / Blade CL/5-8
3	36Z0661		Coperchio / Cover
4	3600150		Magnete / Magnet
5	36G7010		Mozzo / Hub
6	36G7030		Lama liscia / Smooth blade
6	SL2301		Lama sbattitrice / Beater blade
7	36G7040		Anello mod.CL/3 / Ring mod.CL/3
7	36G0650		Anello mod.CL5-8 / Ring mod.CL/5-8
8	SL1923		Lama liscia / Smooth blade
8	SL2302		Lama sbattitrice / Beater blade
9	3190070		Rosetta / Washer
10	36G7040		Anello (4 lame) / Ring (4 blade)
11	31Z8890	ø5x15 A2	Spina / Pin
12	36D2910		Terminale / Terminal
13	32W3240		Microinterruttore / Microswitch
14	36M5350		Terminale / Terminal
15	35X1880		Tubo mod.CL/3 / Hose mod.CL/3
15	35X1870		Tubo mod.CL/5 / Hose mod.CL/5
15	SL1930		Tubo mod.CL/8 / Hose mod.CL/8
16	36M5620		Terminale / Terminal
17	3600160		Magnete / Magnet
18	30W3110		Vasca mod.CL/3 / Tank modCL/3
18	35W0320		Vasca mod.CL/5 / Tank modCL/5
18	30W0330		Vasca mod.CL/8 / Tank modCL/8
19	3151760	V-16-S	Anello / V-Ring
20	35X1900		Tubo mod.CL/3 / Hose mod.CL/3
20	35X1890		Tubo mod.CL/5 / Hose mod.CL/5
20	35X2080		Tubo mod.CL/8 / Hose mod.CL/8
21	36Z6580		Coperchio / Cover
22	3190950		Tappo / Top
23	36G7000		Albero mod.CL/3 / Shaft mod.CL/3
23	36G0620		Albero mod.CL/5-8 / Shaft mod.CL/5-8
24	SL0040	230-400V/3Ph/50Hz	Motore trifase mod.CL/3 / Triple-phase motor mod.CL/3
24	SL0041	230V/1Ph/50Hz	Motore monofase mod.CL/3 / Single-phase motor mod.CL/3
24	32M0170	230-400V/3Ph/50Hz	Motore trifase mod.CL/5-8 / Triple-phase motor mod.CL/5-8
24	32M0200	230V/1Ph/50Hz	Motore monofase mod.CL/5-8 / Single-phase motor mod.CL/5-8
24	SL0939	400V/3Ph/50Hz	Motore 2 velocità mod.CL/5V2-8V2 / 2 speed motor mod.CL/5V2-8V2
25	35D0380		Convogliatore mod.CL/5-8 / Conveyor mod.CL/5-8
26	SL1216		Guarnizione mod.CL/5-8 / Washer mod.CL/5-8
27	35V2920		Profilo / Structural shape
28	35V2930		Piastra / Plate
29	32D0630		Profilato mod.CL/3 / Structural shape mod.CL/3
29	32D0400		Profilato mod.CL/5-8 / Structural shape mod.CL/5-8
30	32Z4840	230V/50-60Hz 3kW	Teleruttore / Remote control switch
31	35W4520		Involucro mod.CL/3 / Housing mod.CL/3
31	35W4460		Involucro mod.CL/5-8 / Housing mod.CL/5-8
32	SL1840		Maniglia / Handle
33	32D0360		Fissacavo / Cable clamp
34	SL1501		Pannello adesivo (1 velocità) / Adhesive panel (1speed)
34	SL1502		Pannello adesivo (2 velocità) / Adhesive panel (2 speed)
35	35V4090		Cruscotto mod.CL/3 / Dashboard mod.CL/3
35	35Q9530		Cruscotto mod.CL/5-8 / Dashboard mod.CL/5-8
35	35V4100		Cruscotto mod.CL/5-8 (2 velocità) / Dashboard mod.CL/5-8 (2 speed)
36	32Z6990		Scheda elettronica / Electronic card
36	32Z7000		Scheda elettronica 2 velocità / 2 speed electronic card
37	35V8180		Profilo / Structural shape
38	32D1050		Piastra / Plate
39	32D1010	1Ph+N+Gnd - M	Connettore monofase / Single-phase connector
39	32D1030	3Ph+N+Gnd - M	Connettore trifase / Triple-phase connector
40	32D1020	1Ph+N+Gnd - F	Connettore monofase / Single-phase connector
40	32D1040	3Ph+N+Gnd - F	Connettore trifase / Triple-phase connector
41	35M8860		Fondo / Bottom
42	3178340		Piedino / Foot
43	36Z0665		Gruppo Coperchio / Cover (assembly)
44	COLCL3L2		Gruppo coltello liscio mod.CL/3 / Smooth cutter mod.CL/3 (assembly)
44	COLCL58L2		Gruppo coltello liscio mod.CL/5-8 / Smooth cutter mod.CL/5-8 (assembly)
45	COLCL58CL4		Gruppo coltello liscio mod.CL/5-8 4 lame / 4 blade-smooth cutter mod.CL/5-8 (assembly)
44	COLCL3L2S		Gruppo coltello sbattitore mod.CL/3 / Beater cutter mod.CL/3 (assembly)
44	COLCL58L2S		Gruppo coltello sbattitore mod.CL/5-8 / Beater cutter mod.CL/5-8 (assembly)
45	COLCL58L4S		Gruppo coltello sbattitore mod.CL/5-8 4 lame / 4 blade-beater cutter mod.CL/5-8 (assembly)
46	51CE959		Gruppo vasca mod.CL/3 / Tank mod.CL/3 (assembly)
46	51CE964		Gruppo vasca mod.CL/5 / Tank mod.CL/5 (assembly)
46	51CE965		Gruppo vasca mod.CL/8 / Tank mod.CL/8 (assembly)
47	6000590		Gruppo coperchio mod.CL/3 / Cover mod.CL/3 (assembly)
47	6000600		Gruppo coperchio mod.CL/5 / Cover mod.CL/5 (assembly)
47	6000610		Gruppo coperchio mod.CL/8 / Cover mod.CL/8 (assembly)
48	SL0010	5x5x20	Linguetta / Key

(*): fuori produzione / out of production