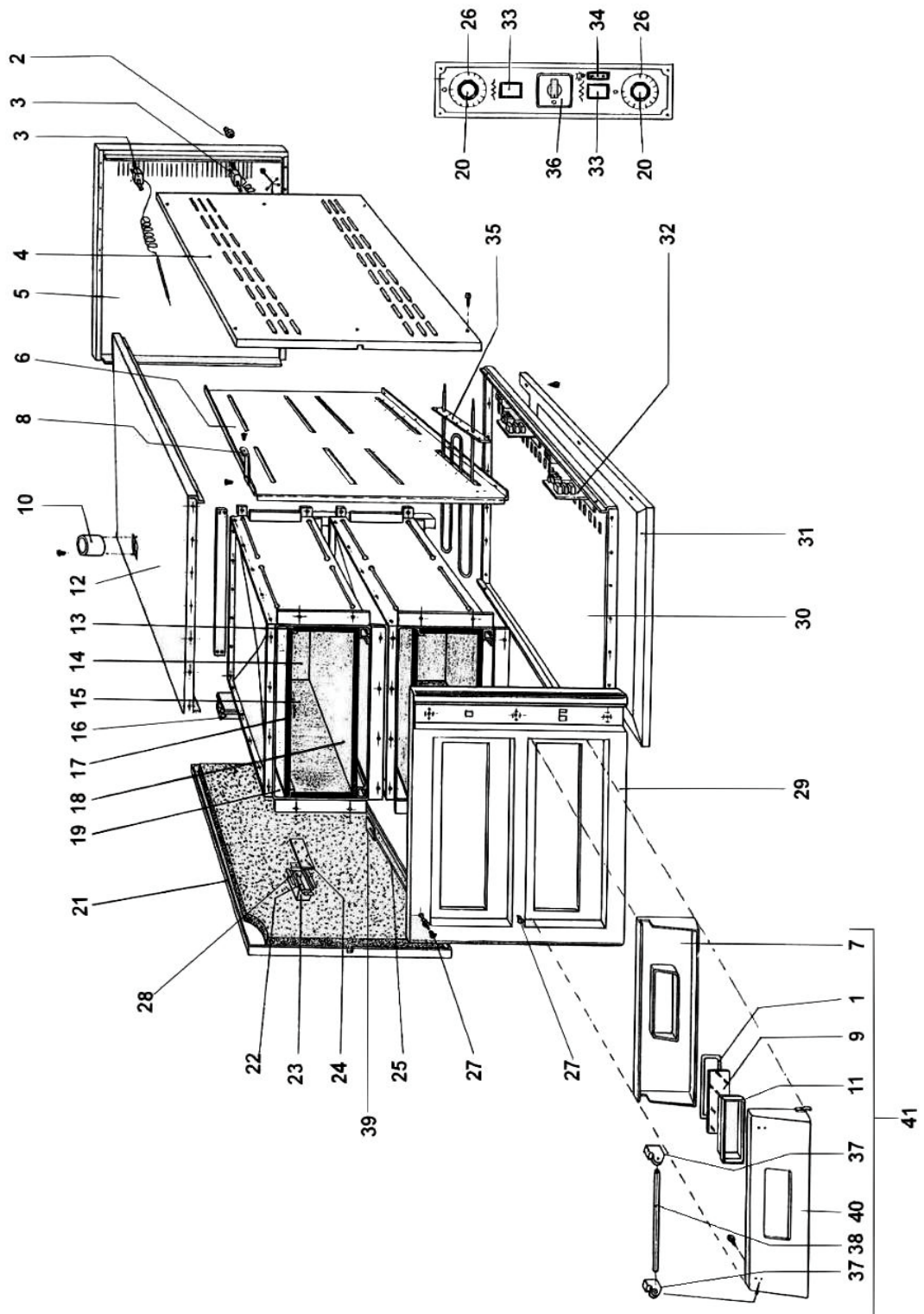


**Forno elettrico mod.FM-FMS4-4+4-6-6+6-9**

**Electric oven mod.FM-FMS4-4+4-6-6+6-9**



## FORNO ELETTRICO MOD.FM-FMS4-4+4-6-6+6-9 ELECTRIC OVEN MOD.FM-FMS4-4+4-6-6+6-9

RIF.	CODICE / CODE	DIN - UNI	DESCRIZIONE / DESCRIPTION
1	CO3615		Guarnizione / Washer
2	SL1021	PG21	Pressacavo / Cable clamp
3	CO3649		Termostato / Thermostat
4	CO3550		Fianco destro mod.FM-FMS4 / Right panel mod.FM-FMS4
4	CO3551		Fianco destro mod.FM-FMS44 / Right panel mod.FM-FMS44
4	CO3552		Fianco destro mod.FM-FMS6 / Right panel mod.FM-FMS6
4	CO3553		Fianco destro mod.FM-FMS66 / Right panel mod.FM-FMS66
4	CO3655		Fianco destro mod.FM-FMS9 / Right panel mod.FM-FMS9
5	CO3531		Fondo mod.FM-FMS4-6 / Bottom mod.FM-FMS4-6
5	CO3532		Fondo mod.FM-FMS44-66 / Bottom mod.FM-FMS44-66
5	CO3633		Fondo mod.FM-FMS9 / Bottom mod.FM-FMS9
6	CO3578		Divisorio mod.FM-FMS4 / Panel mod.FM-FMS4
6	CO3579		Divisorio mod.FM-FMS44 / Panel mod.FM-FMS44
6	CO3580		Divisorio mod.FM-FMS6 / Panel mod.FM-FMS6
6	CO3581		Divisorio mod.FM-FMS66 / Panel mod.FM-FMS66
6	CO3656		Divisorio mod.FM-FMS9 / Panel mod.FM-FMS9
7	CO3613		Controporta mod.FM-FMS4-44-6-66 / Door mod.FM-FMS4-44-6-66
7	CO3643		Controporta mod.FM-FMS9 / Door mod.FM-FMS9
8	CO3565		Staffa / Bracket
9	CO1200		Vetro / Glass
10	CO3526		Scarico / Bulb
11	CO3617		Distanziale / Spacer
12	CO3523		Coperchio mod.FM-FMS4-44 / Cover mod.FM-FMS4-44
12	CO3524		Coperchio mod.FM-FMS6-66 / Cover mod.FM-FMS6-66
12	CO3632		Coperchio mod.FM-FMS9 / Cover mod.FM-FMS9
13	CO3657		Piana destra mod.FM-FMS4-44 / Right stone mod.FM-FMS4-44
13	CO3658		Piana destra mod.FM-FMS6-66 / Right stone mod.FM-FMS6-66
13	CO3648		Piana destra mod.FM-FMS9 / Right stone mod.FM-FMS9
14	CO3645		Piana fondo mod.FM-FMS4-44-6-66 / Bottom stone mod.FM-FMS4-44-6-66
14	CO3659		Piana fondo mod.FM-FMS9 / Bottom stone mod.FM-FMS9
15	CO3665		Piana sinistra mod.FM-FMS4-44 / Left stone mod.FM-FMS4-44
15	CO3646		Piana sinistra mod.FM-FMS6-66 / Left stone mod.FM-FMS6-66
15	CO3666		Piana sinistra mod.FM-FMS9 / Left stone mod.FM-FMS9
16	CO3528		Canna fumaria mod.FM-FMS4-6 / Chimney mod.FM-FMS4-6
16	CO3529		Canna fumaria mod.FM-FMS44-66 / Chimney mod.FM-FMS44-66
16	CO3530		Canna fumaria mod.FM-FMS9 / Chimney mod.FM-FMS9
17	CO3667		Piana superiore mod.FMS4-44 / Top stone mod.FMS4-44
17	CO3668		Piana superiore mod.FMS6-66 / Top stone mod.FMS6-66
17	CO3669		Piana superiore mod.FMS9 / Top stone mod.FMS9
18	CO3660		Piana inferiore mod.FMS4-44 / Down stone mod.FMS4-44
18	CO3644		Piana inferiore mod.FMS6-66 / Down stone mod.FMS6-66
18	CO3647		Piana inferiore mod.FMS9 / Down stone mod.FMS9
19	CO3537		Camera mod.FM-FMS4-44 / Chamber mod.FM-FMS4-44
19	CO3538		Camera mod.FM-FMS6-66 / Chamber mod.FM-FMS6-66
19	CO3634		Camera mod.FM-FMS9 / Chamber mod.FM-FMS9
20	CO3601		Termostato / Thermostat
21	CO3557		Fianco sinistro mod.FM-FMS4 / Left panel mod.FM-FMS4
21	CO3558		Fianco sinistro mod.FM-FMS44 / Left panel mod.FM-FMS44
21	CO3559		Fianco sinistro mod.FM-FMS6 / Left panel mod.FM-FMS6
21	CO3560		Fianco sinistro mod.FM-FMS66 / Left panel mod.FM-FMS66
21	CO3661		Fianco sinistro mod.FM-FMS9 / Left panel mod.FM-FMS9
22	CO3534	230V/1Ph/50-60Hz	Lampada / Lamp
23	CO3536		Scatola / Box
24	CO3662		Vetro / Glass
25	CO3502		Asta mod.FM-FMS4-44 / Rod mod.FM-FMS4-44
25	CO3503		Asta mod.FM-FMS6-66 / Rod mod.FM-FMS6-66
25	CO3504		Asta mod.FM-FMS9 / Rod mod.FM-FMS9
26	CO3611		Manopola / Knob
27	CO3501		Pomello / Knob
28	CO3535		Portalamпада / Lamp holder
29	CO3506		Frontale inox mod.FM-FMS4-6 / Stainless steel panel mod.FM-FMS4-6
29	CO3507		Frontale inox mod.FM-FMS44-66 / Stainless steel panel mod.FM-FMS44-66
29	CO3508		Frontale rustico mod.FM-FMS4-6 / Rustic panel mod.FM-FMS4-6
29	CO3509		Frontale rustico mod.FM-FMS44-66 / Rustic panel mod.FM-FMS44-66
29	CO3629		Frontale inox mod.FM-FMS9 / Stainless steel panel mod.FM-FMS9
29	CO3630		Frontale rustico mod.FM-FMS9 / Rustic panel mod.FM-FMS9
30	CO3575		Fondo mod.FM-FMS4-44 / Bottom mod.FM-FMS4-44
30	CO3576		Fondo mod.FM-FMS6-66 / Bottom mod.FM-FMS6-66
30	CO3637		Fondo mod.FM-FMS9 / Bottom mod.FM-FMS9
31	CO3572		Zoccolo mod.FM-FMS4-44 / Base mod.FM-FMS4-44
31	CO3573		Zoccolo mod.FM-FMS6-66 / Base mod.FM-FMS6-66
31	CO3636		Zoccolo mod.FM-FMS9 / Base mod.FM-FMS9
32	CO3569		Scheda elettronica mod.FM-FMS4-44 / Electronic card mod.FM-FMS4-44
32	CO3570		Scheda elettronica mod.FM-FMS6-66-9 / Electronic card mod.FM-FMS6-66-9

(\*): fuori produzione / out of production

**FORNO ELETTRICO MOD.FM-FMS4-4+4-6-6+6-9**  
**ELECTRIC OVEN MOD.FM-FMS4-4+4-6-6+6-9**

RIF.	CODICE / CODE	DIN - UNI	DESCRIZIONE / DESCRIPTION
33	CO3610	230V/1Ph/50-60Hz	Lampada / Lamp
34	CO3608		Interruttore / Switch
35	CO3555	230V/1Ph/50-60Hz	Resistenza mod.FM-FMS4-44-6-66 / Resistance mod.FM-FMS4-44-6-66
35	CO3635	230V/1Ph/50-60Hz	Resistenza mod.FM-FMS9 / Resistance mod.FM-FMS9
36	CO3599	3Ph+N	Interruttore trifase / Triple-phase switch
36	CO3664	1Ph+N	Interruttore monofase / Single-phase switch
37	CO3587		Staffa / Bracket
38	CO3585		Maniglia mod.FM-FMS4-44-6-66 / Handle mod.FM-FMS4-44-6-66
38	CO3663		Maniglia mod.FM-FMS9 / Handle mod.FM-FMS9
39	CO3516		Staffa / Bracket
40	CO3591		Porta inox mod.FM-FMS4-44-6-66 / Stainless steel door mod.FM-FMS4-44-6-66
40	CO3639		Porta inox mod.FM-FMS9 / Stainless steel door mod.FM-FMS9
40	CO3593		Porta rustica mod FM-FMS4-44-6-66 / Rustic door mod FM-FMS4-44-6-66
40	CO3641		Porta rustica mod.FM-FMS9 / Rustic door mod.FM-FMS9
41	CO3590		Porta inox completa mod.FM-FMS4-44-6-66/Stainless steel door mod.FM-FMS4-44-6-66(assembly)
41	CO3638		Porta inox completa mod.FM-FMS9 / Stainless steel door mod.FM-FMS9 (assembly)
41	CO3592		Porta rustica completa mod.FM-FMS4-44-6-66 / Rustic door mod.FM-FMS4-44-6-66 (assembly)
41	CO3640		Porta rustica completa mod.FM-FMS9 / Rustic door mod.FM-FMS9 (assembly)
<b>(*)</b> : fuori produzione / out of production			