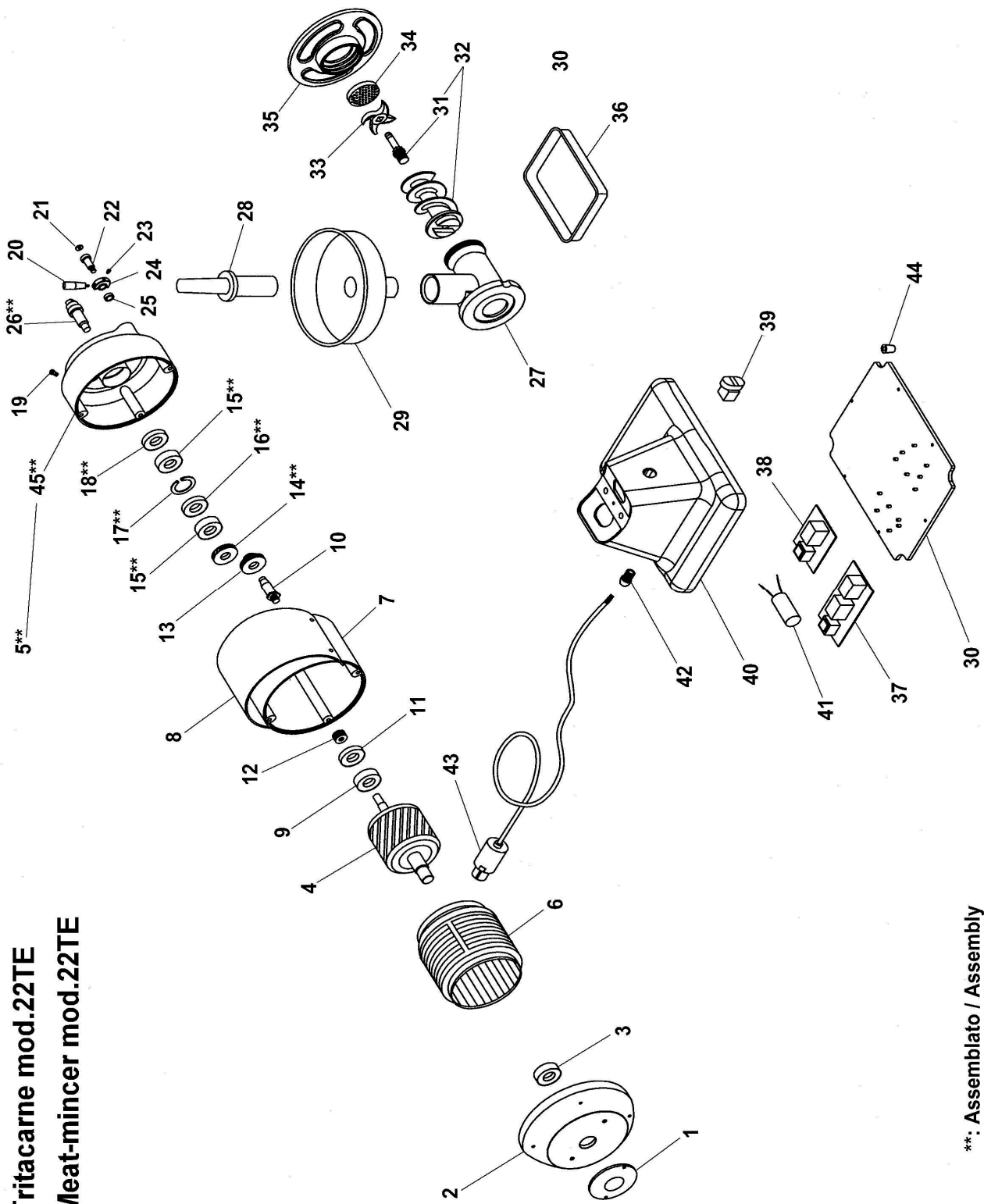


**Tritacarne mod.22TE
Meat-mincer mod.22TE**



** : Assemblato / Assembly

**TRITACARNE MOD.22TE
MEAT-MINCER MOD.22TE**

| Rif No | Codice Code | Caratteristiche Characteristics | Descrizione Description | |
|--------|-------------|---------------------------------|-------------------------|-----------------|
| 1 | SL2833 | | Coperchio | Cover |
| 2 | SL0186 | | Calotta | Calotte |
| 3 | SL0126 | 6203 ZZ | Cuscinetto | Bearing |
| 4 | SL2600 | 400V/3Ph/50Hz | Rotore | Rotor |
| 4 | SL2601 | 230V/1Ph/50Hz | Rotore | Rotor |
| 5 | SA2200 | Assembly | Calotta | Calotte |
| 6 | SL2285 | 400V/3Ph/50Hz | Statore | Stator |
| 6 | SL2286 | 230V/1Ph/50Hz | Statore | Stator |
| 7 | SL2411 | | Carcassa | Housing |
| 8 | SL2586 | | Copertura | Covering |
| 9 | SL0131 | 6203 2RS | Cuscinetto | Bearing |
| 10 | SL2589 | | Albero | Shaft |
| 11 | SL0127 | 17x40x7 | Paraolio | Oil seal |
| 12 | SL0128 | | Ingranaggio | Gear |
| 13 | SL0125 | | Ingranaggio | Gear |
| 14 | SL0130 | | Ingranaggio | Gear |
| 15 | SL2592 | 6204 2RS | Cuscinetto | Bearing |
| 16 | SL2593 | 20x47x7 | Paraolio | Oil seal |
| 17 | SL0082 | ø47 | Seeger | Seeger |
| 18 | SL2591 | 25x47x7 | Paraolio | Oil seal |
| 19 | SL0133 | | Tappo | Tap |
| 20 | SL2584 | | Maniglia | Handle |
| 21 | SL2549 | | Tappo | Tap |
| 22 | SL2405 | | Perno | Pivot |
| 23 | SL2583 | | Grano | Grub screw |
| 24 | SL2421 | | Camma | Cam |
| 25 | SL2406 | | Distanziale | Spacer |
| 26 | SL2528 | | Albero | Shaft |
| 27 | SL2417 | | Bocchettone | Sleeve |
| 27 | SL2544 | Unger | Bocchettone | Sleeve |
| 28 | SL0134 | | Pestello | Pusher |
| 29 | SL0136 | | Tramoggia | Hopper |
| 30 | SL2651 | | Fondo | Bottom |
| 30 | SL0184 | 20/03/03 f.p.(*) | Fondo | Bottom |
| 31 | SL0823 | | Perno | Pivot |
| 31 | SL0824 | Unger | Perno | Pivot |
| 32 | SA5500 | | Elica | Screw shaft |
| 32 | SA5700 | Unger | Elica | Screw shaft |
| 33 | ////////// | | Coltello | Cutter |
| 34 | ////////// | | Piastra | Plate |
| 35 | SL0197 | | Volantino | Handwheel |
| 36 | SL0180 | | Recipiente | Container |
| 37 | SL0999 | Reverse | Scheda elettronica | Electronic card |
| 38 | SL0883 | | Scheda elettronica | Electronic card |
| 39 | SL0891 | | Pulsante | Push button |
| 40 | SL2566 | | Base | Base |
| 40 | SL0190 | 20/03/03 f.p.(*) | Base | Base |
| 41 | SL0931 | 20µF | Condensatore | Condenser |
| 42 | SL1668 | PG11 | Pressacavo | Cable clamp |
| 43 | SL1841 | 3Ph+Gnd | Cavo elettrico | Electric cable |
| 43 | SL1671 | 1Ph+N+Gnd | Cavo elettrico | Electric cable |
| 44 | SL0235 | | Piedino | Foot |
| 45 | SL2526 | | Calotta | Calotte |

(*): fuori produzione / out of production