

# DESPIECE TECNICO

OCTUBRE 1995

MARMITAS  
MARMITES  
BOILING PANS

ME-910 BM  
ME-915 BM

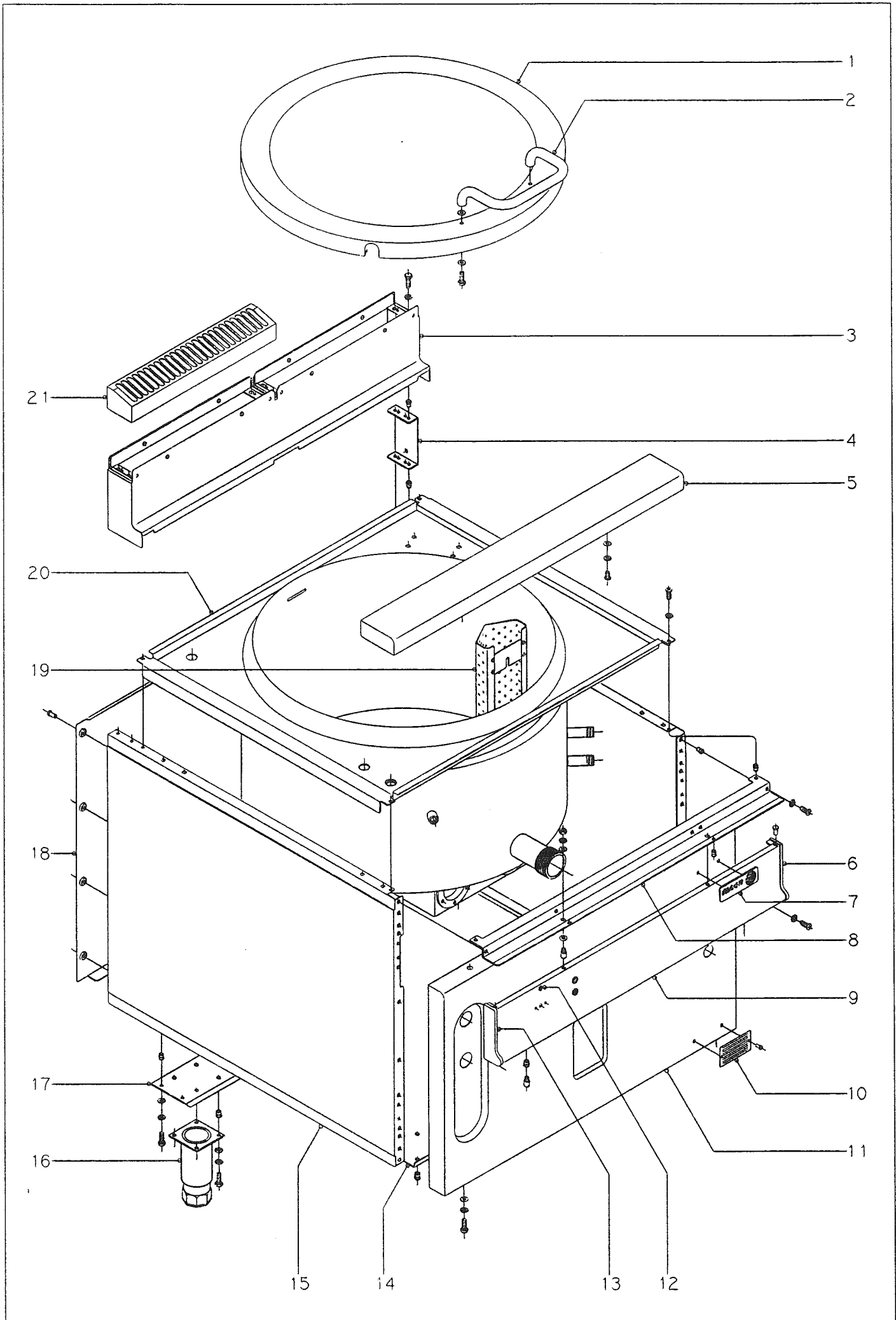


Proyectos e Instalaciones y S.A.T.  
Oñati, 9 de Noviembre de 1995

Hostelería y Lavandería Industrial  
Grandes Cuisines et Buanderie  
Catering and Laundry Equipment

**Fagor Industrial, S. Coop.**  
20560 - Oñati - España



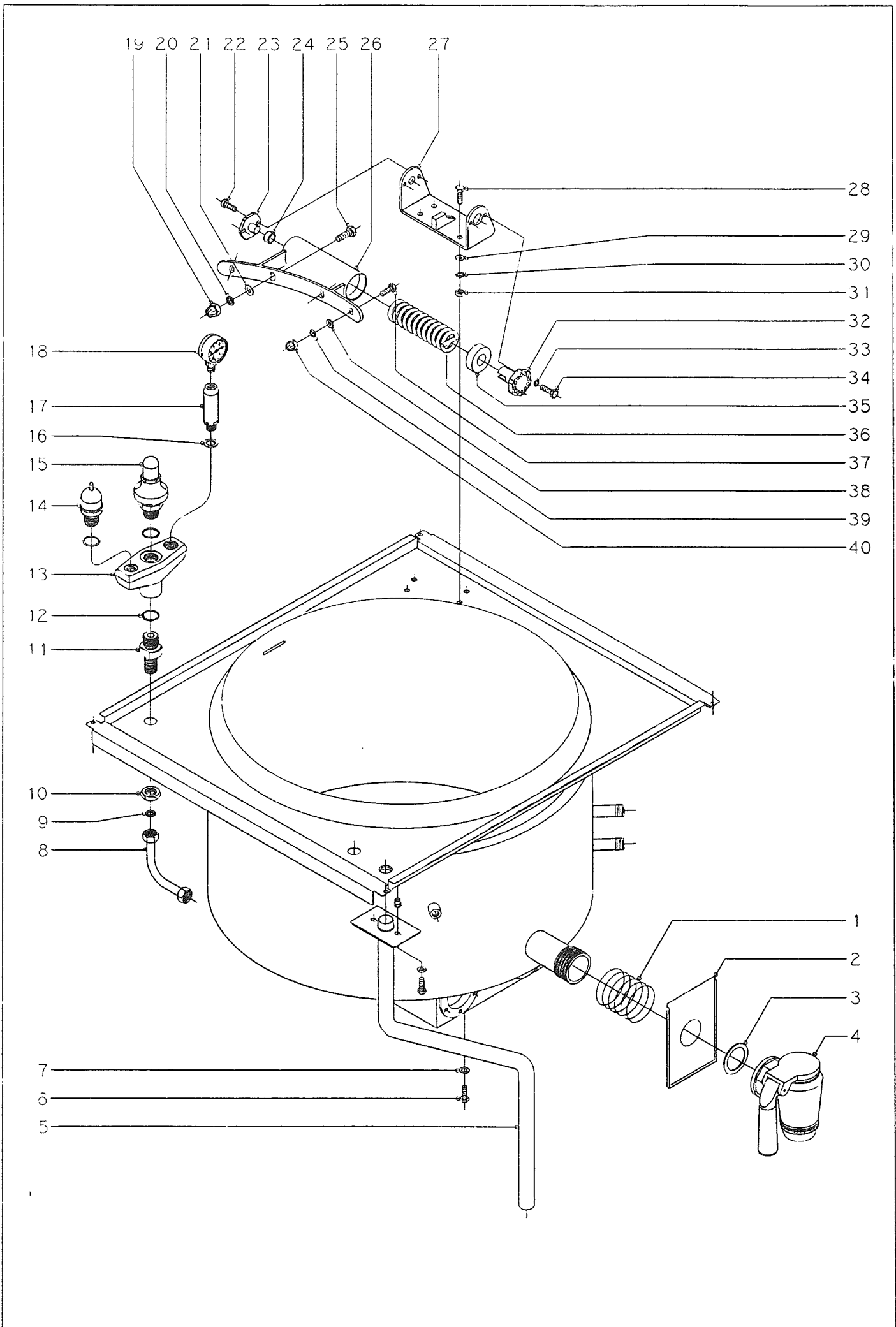


|                  |                           |               |  |             |  |
|------------------|---------------------------|---------------|--|-------------|--|
| N plano<br>C-294 | Firma<br><i>D. Pineda</i> | Fecha<br>X-95 | Aparato<br>MARMITAS ME-9 10-BM; ME-9 15-BM | Lamina<br>1 | Fagor Industrial S.Coop. <b>FAGOR</b><br>Orate |
|------------------|---------------------------|---------------|--|-------------|--|



| CONCEPTO: MUEBLE EXTERIOR<br>SUJET: PIECES EXTERIEURES<br>CONCEPT: EXTERNAL PARTS |         | LAMINA N°<br>VUE N°<br>ILUSTR. N. | PLANO N°<br>PLAN N°<br>DRAWING N. | PAGINA N°<br>PAGE N°<br>PAGE N. | OBSERVACIONES |
|---|---------|-----------------------------------|-----------------------------------|---------------------------------|---------------|
| APARATO - APPAREIL - APPLIANCE: MARMITA - MARMITE - BOILING PAN                   |         | ME910 BM                          | ME915 BM                          |                                 |               |
| N°  | CODIGO  | DENOMINACION                      | DENOMINATION                      | DESCRIPTION                     |               |
| 9   | S092801 | Panel portamandos                 | Panneau de commande               | Control panel                   | 1             |
|   | Q221343 | Remache exagonal M.6              | Rivet M.6                         | Rivet M.6                       | 2             |
|   | Q151336 | Tornillo soporte guía             | Vis support guide                 | Screw                           | 2             |
|   | Q242030 | Arandela abanico A.5              | Rondelle A.5                      | Washer A.5                      | 2             |
|   | Q152004 | Tornillo aplastado M.5x10         | Vis M.5x10                        | Screw M.5x10                    | 2             |
| 10  | Z206101 | Placa matricula                   | Plaque d'identification           | Identification plate            | 1             |
|   | Q419005 | Remache tubular Ø 4x8             | Rivet Ø 4x8                       | Rivet Ø 4x8                     | 2             |
| 11  | S082800 | Panel frontal                     | Panneau frontal                   | Frontal panel                   | 1             |
| 11  | S092800 | Panel frontal                     | Panneau frontal                   | Frontal panel                   | -             |
|   | Q301309 | Arandela plana Ø16xØ6x1,2         | Rondelle Ø16xØ6x1,2               | Washer Ø16xØ6x1,2               | 2             |
|   | Q242040 | Arandela abanico A.6              | Rondelle A.6                      | Washer A.6                      | 2             |
|   | Q011342 | Tornillo exagonal M.6x15          | Vis hexagonal M.6x15              | Hexagonal bolt M.6x15           | 2             |
| 12  | U562806 | Indicador posición "0"            | Indicateur de position "0"        | "Off" indicator                 | 1             |
|   | Q221026 | Clips sujeción indicador          | Fixation voyant                   | Indicator fastening             | 1             |
| 13  | U262810 | Cantenera izda. portamandos       | Cantonière gauche                 | Control panel curb bar-left     | 1             |
|   | Q419005 | Remache tubular Ø 4x8             | Rivet Ø 4x8                       | Rivet Ø 4x8                     | 2             |
| 14  | S092600 | Base inferior                     | Base inférieur                    | Lower base                      | 1             |
| 15  | R202800 | Panel lateral                     | Panneau latéral                   | Side panel                      | 2             |
|   | Q221343 | Remache exagonal M.6              | Rivet M.6                         | Rivet M.6                       | 8             |
|   | Q301309 | Arandela plana Ø16xØ6x1,2         | Rondelle Ø16xØ6x1,2               | Washer Ø16xØ6x1,2               | 8             |
|   | Q242040 | Arandela abanico A.6              | Rondelle A.6                      | Washer A.6                      | 8             |
|   | Q011342 | Tornillo exagonal M.6x15          | Vis hexagonal M.6x15              | Hexagonal bolt M.6x15           | 8             |
| 16  | Z260104 | Pata regulable                    | Pied réglable                     | Adjustable foot                 | 4             |
|   | Q221343 | Remache exagonal M.6              | Rivet M.6                         | Rivet M.6                       | 16            |
|   | Q301309 | Arandela plana Ø16xØ6x1,2         | Rondelle Ø16xØ6x1,2               | Washer Ø16xØ6x1,2               | 16            |
|   | Q242040 | Arandela abanico A.6              | Rondelle A.6                      | Washer A.6                      | 16            |
|   | Q011342 | Tornillo exagonal M.6x15          | Vis hexagonal M.6x15              | Hexagonal bolt M.6x15           | 16            |
| 17  | R202602 | Listón soporte patas 1 M.         | Support pour pieds - 1 Mod.       | Legs support - 1 Mod.           | 2             |
| 18  | R202801 | Panel posterior                   | Panneau postérieur                | Rear panel                      | 1             |
|   | Q419005 | Remache tubular Ø 4x8             | Rivet Ø 4x8                       | Rivet Ø 4x8                     | 10            |
| 19  | S016102 | Filtro de cuba                    | Filtre de cuve                    | Filter of pan                   | 1             |
| 19  | S036116 | Filtro de cuba                    | Filtre de cuve                    | Filter of pan                   | -             |





N plano  
C-295

Firma  
*Avacha*

Fecha  
X-95

Aparato  
MARMITAS ME-910-BM; ME-915-BM

Lamina  
2

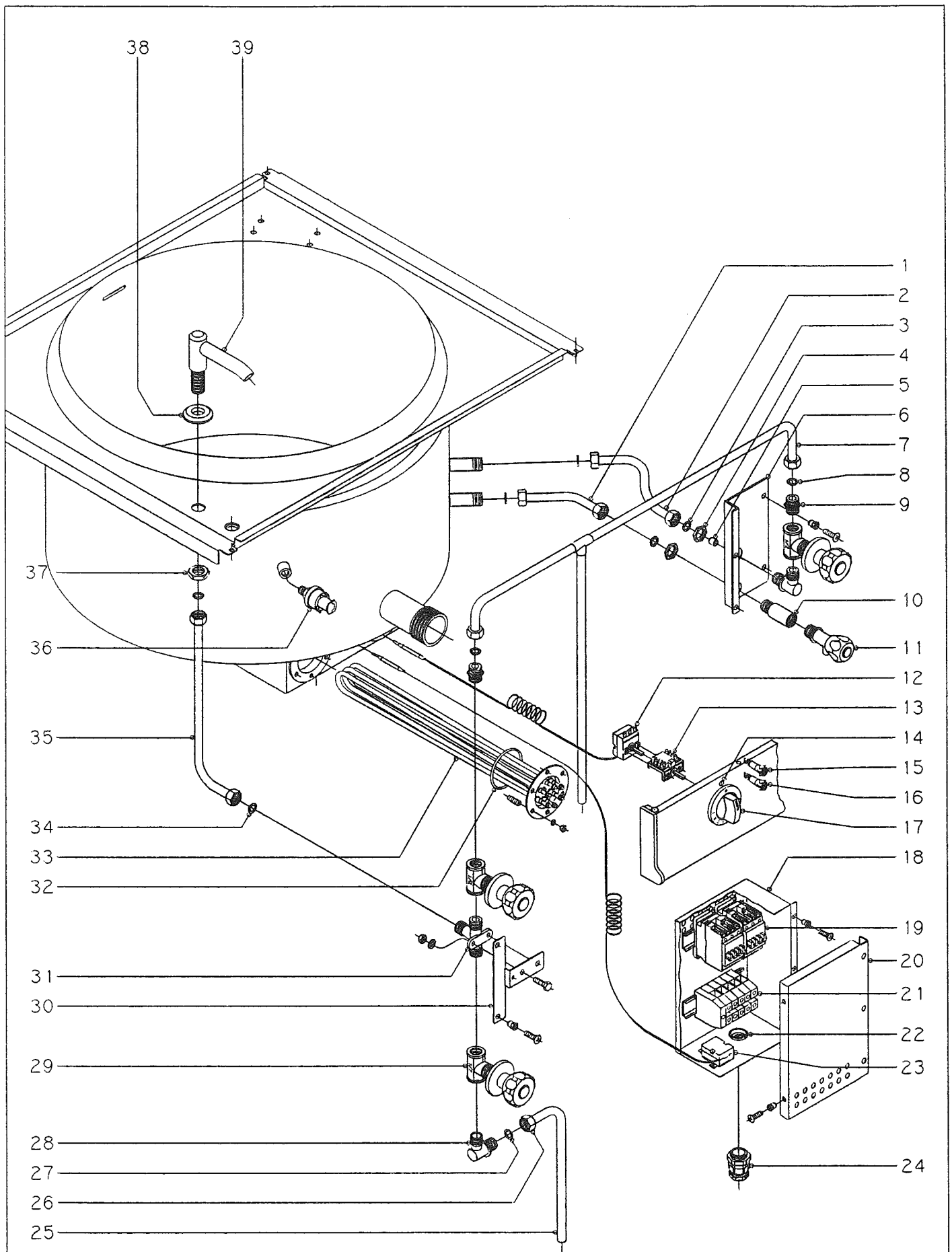
Fagor Industrial S.Coop. **FAGOR**  
Orate

| CONCEPTO: DESAGÜES, VÁLVULA Y BISAGRA TAPA<br>SUJET: VIDANGE, SOUPAPE ET CHARNIERE<br>CONCEPT: DRAIN, VALVE AND HINGE |         |                                       | LAMINA N°<br>VUE N°<br>ILUSTR. N.                  | PLANO N°<br>PLAN N°<br>DRAWING N. | PAGINA N°<br>PAGE N°<br>PAGE N. |            |
|---|---------|---------------------------------------|--|-----------------------------------|---------------------------------|------------|
|   |         |                                       | 2  | C-295                             | 6                               |            |
| APARATO - APPAREIL - APPLIANCE: MARMITA - MARMITE - BOILING PAN   |         |                                       | MODELO Y CANTIDAD - MOD. ET QUANT. - MOD. & QUANT. |                                   |                                 |            |
| N°  | CODIGO  | DENOMINACION                          | DENOMINATION                                       | DESCRIPTION                       | ME-9 TO BM                      | ME-9 15 BM |
| 1   | S112105 | Muelle soporte cubierta               | Ressort  | Spring                            | 1                               | 1          |
| 2   | S112803 | Cubierta de grifo                     | Couverture du robinet                              | Cock plate                        | 1                               | 1          |
| 3   | S112152 | Junta grifo vaciado                   | Joint  | Seal                              | 1                               | 1          |
| 4   | S112150 | Grifo de vaciado                      | Vanne de vidange                                   | Drain tap                         | 1                               | 1          |
| 5   | S036119 | Tube vaciado                          | Conduite de vidange                                | Drain pipe                        | 1                               | 1          |
| 6   | Q012063 | Tornillo tapón M.10x20                | Vis M.10x20  | Bolt M.10x20                      | 1                               | 1          |
| 7   | Q309003 | Junta de cobre Ø18xØ11x2              | Joint Ø18xØ11x2                                    | Joint Ø18xØ11x2                   | 1                               | 1          |
| 8   | S045002 | Conducción a válvula                  | Conduite à soupape                                 | Pipe to valve                     | 1                               | 1          |
| 9   | Q306024 | Arandela junta Ø 18xØ12,5x1,5         | Rondelle joint Ø 18xØ12,5x1,5                      | Joint washer Ø 18xØ12,5x1,5       | 1                               | 1          |
| 10  | Q221401 | Tuerca exagonal 1/2"                  | Ecrou hexagonal 1/2"                               | Hexagonal nut 1/2"                | 1                               | 1          |
| 11  | S042100 | Porta-válvula                         | Porte-soupape                                      | Valve holder                      | 1                               | 1          |
| 12  | Q306049 | Arandela junta Ø31xØ26,5x1            | Rondelle joint Ø31xØ26,5x1                         | Joint washer Ø31xØ26,5x1          | 3                               | 3          |
| 13  | S022100 | SopORTE tres salidas                  | Support trois sorties                              | Support                           | 1                               | 1          |
| 14  | S022103 | Válvula                               | Soupape  | Valve                             | 1                               | 1          |
| 15  | S022101 | Válvula de seguridad                  | Soupape de sécurité                                | Safety valve                      | 1                               | 1          |
| 16  | Q306039 | Arandela junta Ø25xØ16,5x1,5          | Rondelle joint Ø25xØ16,5x1,5                       | Joint washer Ø25xØ16,5x1,5        | 1                               | 1          |
| 17  | S022102 | Sifón portamanómetro                  | Siphon   | Siphon                            | 1                               | 1          |
| 18  | Q220815 | Manómetro de 0 a 1 kg/cm <sup>2</sup> | Manomètre de 0 à 1 Kg/cm <sup>2</sup>              | Manometer, 0-1 Kg/cm <sup>2</sup> | 1                               | 1          |
| 19  | Q211150 | Tuerca sombrerete M.8                 | Ecrou à chapeau M.8                                | Cap nut M.8                       | 2                               | 2          |
| 20  | Q262050 | Arandela muelle A.8                   | Rondelle à ressort A.8                             | Spring washer A.8                 | 2                               | 2          |
| 21  | Q232050 | Arandela plana A.8                    | Rondelle plate A.8                                 | Flat washer A.8                   | 2                               | 2          |
| 22  | Q012041 | Tornillo exagonal M.6x10              | Vis hexagonal M.6x10                               | Hexagonal screw M.6x10            | 2                               | 2          |
| 23  | S116119 | Giro de asa                           | Dispositif pivotage poignée                        | Handle rotation                   | 1                               | 1          |
| 24  | S116126 | Cojinete cilíndrico                   | Coussinet cylindrique                              | Cylindrical bearing               | 1                               | 1          |
| 25  | Q012052 | Tornillo exagonal M.8x15              | Vis hexagonal M.8x15                               | Hexagonal screw M.8x15            | 2                               | 2          |
| 26  | S036108 | Bisagra                               | Charnière  | Hinge                             | 1                               | 1          |
| 27  | S036110 | SopORTE de bisagra                    | Support de charnière                               | Hinge support                     | 1                               | 1          |
| 28  | Q012055 | Tornillo exagonal M.8x30              | Vis hexagonal M.8x30                               | Hexagonal screw M.8x30            | 4                               | 4          |
| 29  | Q232050 | Arandela plana A.8                    | Rondelle plate A.8                                 | Flat washer A.8                   | 4                               | 4          |
| 30  | Q262050 | Arandela muelle A.8                   | Rondelle à ressort A.8                             | Spring washer A.8                 | 4                               | 4          |
| 31  | Q162050 | Tuerca exagonal M.8                   | Ecrou hexagonal M.8                                | Hexagonal nut M.8                 | 4                               | 4          |
| 32  | S116120 | Tensor resorte                        | Tendeur ressort                                    | Spring sleeve nut                 | 1                               | 1          |

OBSERVACIONES









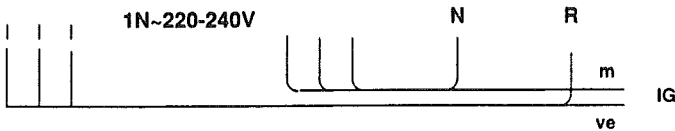
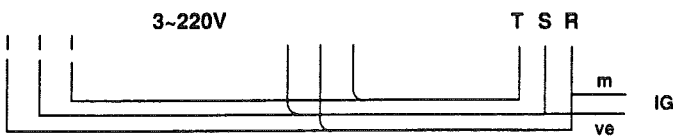
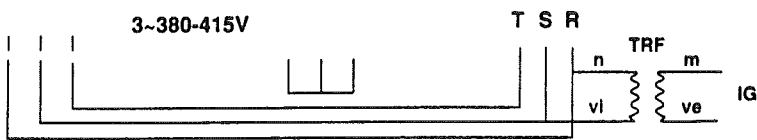
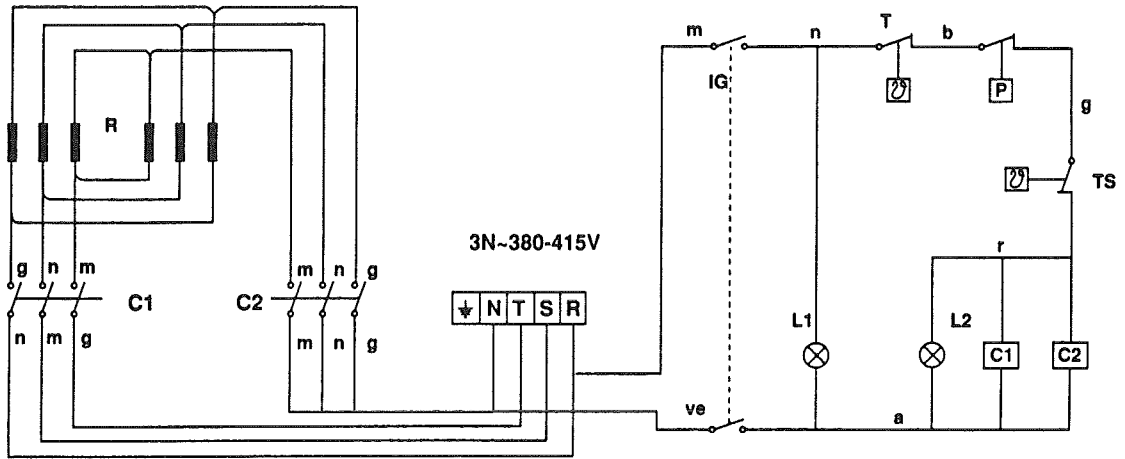
| CONCEPTO: PARTE ELECTRICA Y TOMAS DE AGUA<br>SUJET: PIECES ELECTRIQUES ET PRISES D'EAU<br>CONCEPT: ELECTRICAL COMPONENTS AND WATER INLET |         |                               | LAMINA N°<br>VUE N°<br>ILUSTR. N.                  | 3                               | PLANO N°<br>PLAN N°<br>DRAWING N. | C-296     | PAGINA N°<br>PAGE N°<br>PAGE N. | 10 |
|--|---------|-------------------------------|--|---------------------------------|-----------------------------------|-----------|---------------------------------|----|
| APARATO - APPAREIL - APPLIANCE: MARMITA - MARMITE - BOILING PAN  |         |                               | MODELO Y CANTIDAD - MOD. ET QUANT. - MOD. & QUANT. |                                 |                                   |           |                                 |    |
| N°   | CODIGO  | DENOMINACION                  | DENOMINATION                                       | DESCRIPTION                     | ME-910 BM                         | ME-915 BM | OBSERVACIONES                   |    |
| 21   | R263003 | Borna fases (gris)            | Connexion pour phase (gris)                        | Phase connection (grey)         | 3                                 | 3         |                                 |    |
|  | R673010 | Borna neutro (azul)           | Connexion pour neutre (bleu)                       | Neutral connection (blue)       | 1                                 | 1         |                                 |    |
|  | Z103035 | Borna tierra (verde-amarillo) | Connexion terre (vert-jaune)                       | Earth connection (green-yellow) | 1                                 | 1         |                                 |    |
|  | Z683096 | Tope final                    | Butoir   | Stop                            | 1                                 | 1         |                                 |    |
|  | Z103084 | Guía L=138                    | Guide L=138  | Guide L=138                     | 1                                 | 1         |                                 |    |
| 22   | X723014 | Pasamuros                     | Protecteur de cablage                              | Wire protection                 | 2                                 | 2         |                                 |    |
| 23   | R343124 | Termostato limitador          | Thermostat   | Thermostat                      | 1                                 | 1         |                                 |    |
| 24   | R023013 | Prensaestopas                 | Passe-cable  | Wire protection                 | 1                                 | 1         |                                 |    |
| 25   | S035011 | Conduccion agua fria          | Conduit d'entree d'eau froide                      | Inlet of water                  | 1                                 | 1         |                                 |    |
| 26   | Q223010 | Tuerca 1/2"                   | Ecrou 1/2"   | Nut 1/2"                        | 1                                 | 1         |                                 |    |
| 27   | Q306024 | Arandela junta Ø 18xØ12,5x1,5 | Rondelle joint Ø 18xØ12,5x1,5                      | Joint washer Ø 18xØ12,5x1,5     | 1                                 | 1         |                                 |    |
| 28   | S115013 | Codo                          | Coude  | Elbow                           | 2                                 | 2         |                                 |    |
| 29   | S112151 | Llave paso con mando          | Robinet d'arrêt et de commande                     | Control stopcock                | 3                                 | 3         |                                 |    |
| 30   | S032609 | SopORTE grifos de agua        | Support  | Support                         | 1                                 | 1         |                                 |    |
|  | Q221342 | Remache exagonal M.5          | Rivet M.5  | Rivet M.5                       | 2                                 | 2         |                                 |    |
|  | Q152004 | Tornillo aplastado M.5x10     | Vis M.5x10   | Screw M.5x10                    | 2                                 | 2         |                                 |    |
| 31   | S205022 | Racord unión de grifos        | Raccord  | Raccord                         | 1                                 | 1         |                                 |    |
|  | Q011342 | Tornillo exagonal M.6x15      | Vis M.6x15   | Screw M.6x15                    | 2                                 | 2         |                                 |    |
|  | Q242040 | Arandela abanico A.6          | Rondelle A.6                                       | Washer A.6                      | 2                                 | 2         |                                 |    |
|  | Q161440 | Tuerca exagonal M.6           | Ecrou M.6  | Nut M.6                         | 2                                 | 2         |                                 |    |
| 32   | Q307035 | Junta tórica                  | Joint  | Joint                           | 2                                 | 2         |                                 |    |
| 33   | Z691751 | Resistencia de calentamiento  | Resistance   | Heating element                 | 2                                 | 2         |                                 |    |
|  | Q131500 | Varilla roscada M.6x25        | Tige M.6x25  | Threaded rod M.6x25             | 12                                | 12        |                                 |    |
|  | Q262040 | Arandela muelle A.6           | Rondelle A.6                                       | Washer A.6                      | 12                                | 12        |                                 |    |
|  | Q163140 | Tuerca exagonal M.6           | Ecrou M.6  | Nut M.6                         | 12                                | 12        |                                 |    |
| 34   | Q306024 | Arandela junta Ø 18xØ12,5x1,5 | Rondelle joint Ø 18xØ12,5x1,5                      | Joint washer Ø 18xØ12,5x1,5     | 2                                 | 2         |                                 |    |
| 35   | S035003 | Conducto grifos a base        | Conduite robinets à base                           | Cock-to-base pipe               | 1                                 | 1         |                                 |    |
| 36   | S093000 | Presostato                    | Presostat  | Level switch                    | 1                                 | 1         |                                 |    |
| 37   | Q221401 | Tuerca exagonal 1/2"          | Ecrou 1/2"   | Nut 1/2"                        | 1                                 | 1         |                                 |    |
| 38   | S206121 | Embellecedor base             | Garniture base                                     | Base adornment                  | 1                                 | 1         |                                 |    |
| 39   | S206120 | Tubo de llenado               | Conduit de remplissage                             | Filling pipe                    | 1                                 | 1         |                                 |    |



# Esquema eléctrico

ME-910BM

ME-915BM



- ve = verde
- r = rojo
- m = marrón
- g = gris
- n = negro
- a = azul
- b = blanco
- vi = violeta
- am/ve = amarillo/verde