

ARMADI FRIGORIFERI
REFRIGERATORS
KÜHLSCHRÄNKE
ARMOIRES FRIGORIFIQUES

700-1400 x P
700-1400 x N
700-1400 x F
700-700 x PP
700-700 x NN -PN
700-700 x PF - FN



PARTI DI RICAMBIO

UNITA' CONDENSANTE	2
UNITA' EVAPORANTE	3
COMPONENTI ELETTRICI E	4
TERMOSTATO	4
PARTI GENERALI	5
COMPONENTI CRUSCOTTO E PORTA	6
ACCESSORI INTERNI	8

I

SPARE PARTS

CONDENSING UNIT	2
EVAPORATOR	3
ELECTRIC COMPONENTS AND	4
THERMOSTAT	4
CONTROL PANEL and THERMOSTAT	5
GENERAL PARTS	6
INTERNAL ACCESSORIES	8

GB

ERSATZTEILE

KAELTAGGREGAT EINHEIT	2
VERDAMPFER	3
ELEKTRISCH, THERMOSTAT	4
FRONTE BLENDE-UND TÜRTEILE	4
ZUBEHÖRE	5
	6
	8

D

PIECES DETACHEES

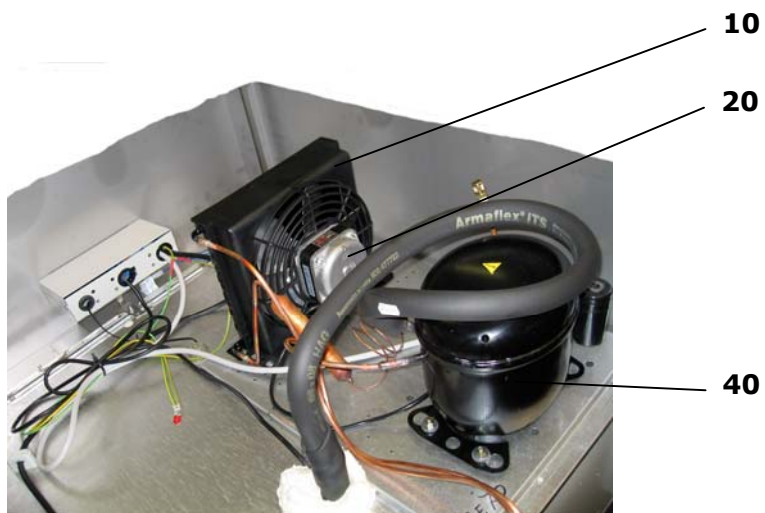
GROUPE REFRIGERE	2
EVAPORATEUR	3
COMPOSANTS ELECTRIQUES	4
THERMOSTAT	4
COMPOSANTS PANNEAU FRONTAL ET	5
PORTE	6
ACCESSOIRES	8

F

14481680707

Rev. 1.0 Di Re

UNITÀ CONDENSANTE CONDENSING UNIT KÄLTEAGGREGAT EINHEIT GROUPE REFRIGERE



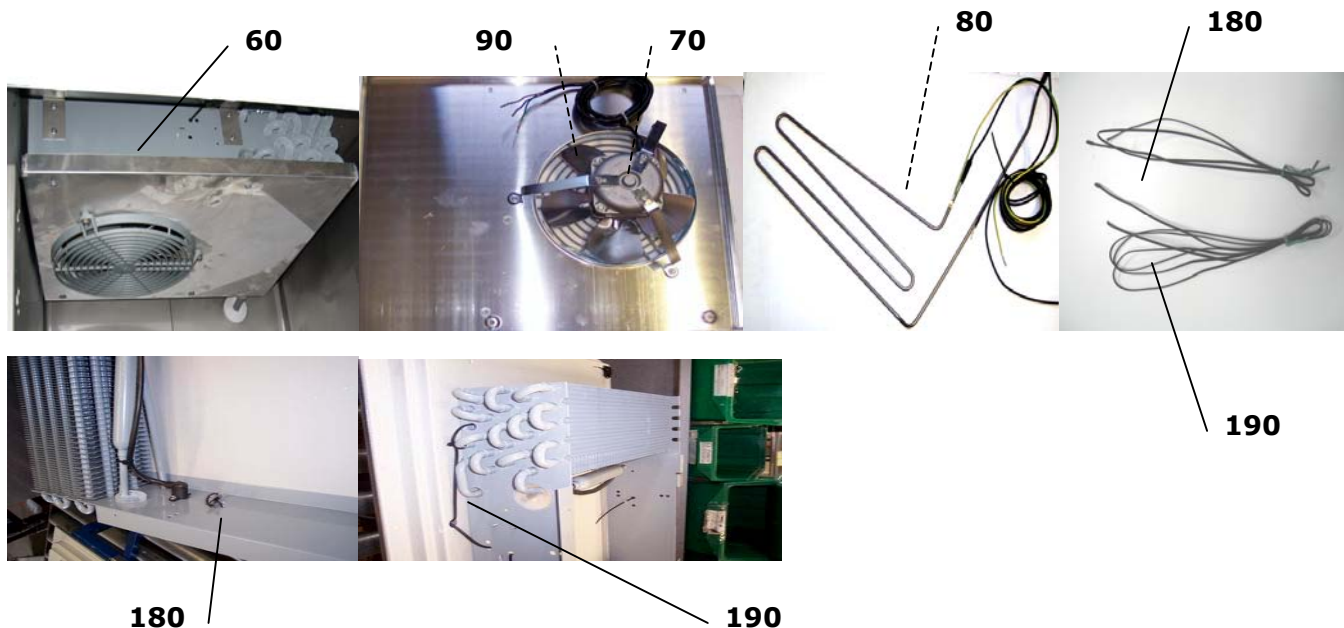
ID	Codice Code Code Code	Modello Model Modell Modèle	Tipo Type Typ	Descrizione Description Beschreibung Description
10	141622800016	70, 72	P, N	Condensatore aria
	141622800018	70, 72	F	Condenser
	141622800026	140, 144	P, N	Luftverflüssiger
	141622800020	140, 144	F	Condenseur à air
20	1648001017	70, 72	P, N, F	Motore ventilatore
	1648001016	140, 144	P, N	Motor, fan
	1648001200	140, 144	F	Motor, ventilator Moteur, ventilateur
40	141565100030	70, 72	P, N	Compressore
	141565100180	70, 72	F	Compressor
	141565100050	140, 144	P, N	Kompressor
	141555100065	140, 144	F	Compresseur

P=+2°+10°C

N=-2°+8°C

F=-21°-18°C

UNITA' EVAPORANTE EVAPORATOR VERDAMPFER EVAPORATEUR



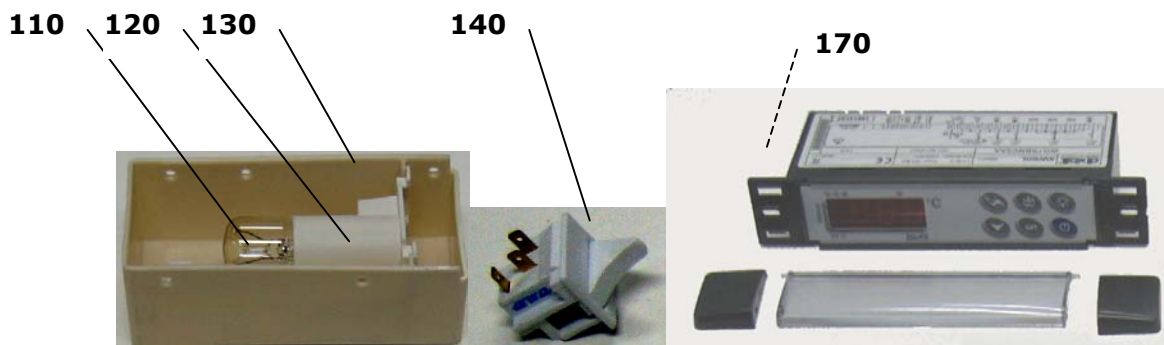
ID	Codice Code Code Code	Modello Model Modell Modèle	Tipo Type	Descrizione Description Beschreibung Description
60	14330570135 14330570134 14330540134	70, 72 70, 72 140, 144	P N, F P, N, F	Aeroevaporatore Evaporator, complete Luftverdampfer Evaporateur à air
70	1648001017 1648001016 1648001200	70, 72 140, 144 140, 144	P, N, F P, N F	Motore ventilatore Motor, fan Motor, ventilator Moteur, ventilateur
80	1666355	70, 72, 140, 144	P, N, F	Resistenza sbrinamento evaporatore Heating element, evaporator defrost Verdampferabtauungswiderstand Résistance de dégivrage de l'évaporateur
90	1495200034 1495230034 1495254034	70, 72, 140, 144 70, 72 140, 144	P, N F F	Ventola evaporatore Evaporator fan Lüfter Verdampfer Ventilateur evaporateur
100	33277017	70, 72, 140, 144	P, N, F	Griglia protezione ventola Fan protection grill Lüfter-Schutzgitter Grille de protection du ventilateur
180	167212	70, 72 ,140, 144	P, N, F	Sonda cella 1,5 m Probe room 1,5 m Fühler 1,5 m Sonde compartiment 1,5 m
180	167211	70, 72 ,140, 144	N, F	Sonda evaporatore3 m Probe evaporator 3 m Fühler Verdampfer 3 m Sonde évaporateur 3 m

P=+2°+10°C

N=-2°+8°C

F=-21°-18°C

**COMPONENTI ELETTRICI e TERMOSTATO
ELECTRIC COMPONENTS & THERMOSTAT
ELEKTRISCH, THERMOSTAT
COMPOSANTS ELECTRIQUES, THERMOSTAT**



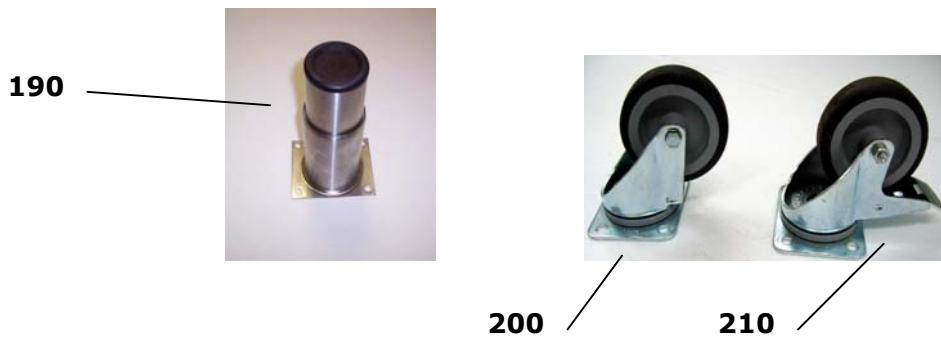
ID	Codice Code Code Code	Modello Model Modell Modèle	Tipo Type	Descrizione Description Beschreibung Description
110	1640403	70, 72, 140, 144	P, N, F	Lampada Lamp Lampe Lampe
120	165705	70, 72, 140, 144	P, N, F	Portalampada Bulb socket Gluehlampenfassung Porta lampe
130	165706	70, 72, 140, 144	P, N, F	Scatola portalampada Lamp holder box Gluehlampenfassung Porte-lampe
140	164608	70, 72, 140, 144	P, N, F	Microinterruttore Micro-switch Mikroschalter Micro-interrupteur
170	16815108 16815107	70, 72, 140, 144 70, 72, 140, 144	P N, F	Termostato Thermostat Thermostat Thermostat

P=+2°+10°C

N=-2°+8°C

F=-21°-18°C

**PARTI GENERALI
GENERAL PARTS
ALLGEMEIN TEIL
PIECES DETACHEES GENERALES**



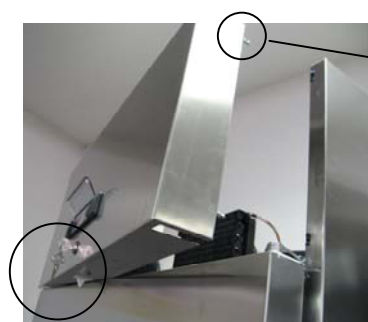
ID	Codice Code Kode Code	Modello Model Modell Modèle	Tipo Type	Descrizione Description Beschreibung Description
190	1467516	70, 72, 140, 144	P, N, F	Piedino tondo INOX Round foot INOX Rundfuß INOX Pied rond INOX
200	147805	70, 72, 140, 144	P, N, F	Ruota Caster Rad Roue
210	147806	70, 72, 140, 144	P, N, F	Ruota con freno Caster with brake Rad mit Bremse Roue avec frein

P=+2°+10°C

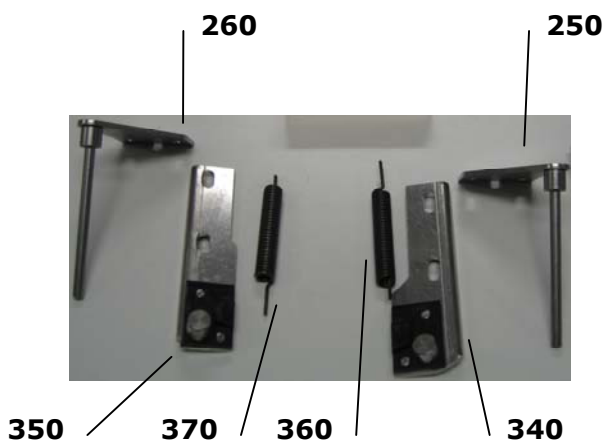
N=-2°+8°C

F=-21°-18°C

**COMPONENTI CRUSCOTTO E PORTA
FRONT PANEL AND DOOR COMPONENTS
FRONTE BLENDE-UND TÜRTEILE
COMPOSANTS PANNEAU FRONTAL ET PORTE**



230 240



**COMPONENTI CRUSCOTTO E PORTA
FRONT PANEL AND DOOR COMPONENTS
FRONTE BLENDE-UND TÜRTEILE
COMPOSANTS PANNEAU FRONTAL ET PORTE**

ID	Codice Code Code Code Code	Modello Model Modell Modèle	Tipo Type	Descrizione Description Beschreibung Description
220	146607006	70, 72, 140, 144	P, N, F	Perno chiusura cruscotto Pivot arrête porte
230	1483010	70, 72, 140, 144	P, N, F	Alloggiamento per serratura Lock housing Gehäuse für Sperrung Niche pour serrures
240	1483009	70, 72, 140, 144	P, N, F	Chiave key schlüssel Cles
250	14850002	70, 72, 140, 144	P, N, F	Cerniera superiore destra Right upper hinge Unteres Scharnier Recht Charnière i superieure droite
260	14850003	70, 72, 140, 144	P, N, F	Cerniera superiore sinistra Left upper hinge Unteres Scharnier Link Charnière superieure gauche
280	32630602 32630603 32630604	70, 140 72, 144 72, 144	P, N, F P, N, F P, N, F	Porta con guarnizione Door with gasket Tür mith Tür-Dichtung Porte avec joint
320	14415991559 14415990738	70, 140 72, 144	P, N, F P, N, F	Guarnizione porta Door gasket Tür-Dichtung Joint de la porte
340	32140097	70, 72, 140, 144	P, N, F	Cerniera inferiore destra Right lower hinge Unteres Scharnier Recht Charnière inférieure droite
350	32140098	140, 144	P, N, F	Cerniera inferiore sinistra Left lower hinge Unteres Scharnier Link Charnière inférieure gauche
360	1412083	70, 72, 140, 144	P, N, F	Molla DX RH Spring Feder RH Resorte Droite
370	1412084	70, 72, 140, 144	P, N, F	Molla SX LH Spring Feder LH Resorte Gauche

P=+2°+10°C

N=-2°+8°C

F=-21°-18°C

**ACCESSORI INTERNI
INTERNAL ACCESSORIES
ZUBEHÖRE
ACCESSOIRES**



ID	Codice Code Kode Code	Modello Model Modell Modèle	Tipo Type	Descrizione Description Beschreibung Description
380	1440065530	70, 72, 140, 144	P, N, F	Griglia Grill Gitter Grille
390	33580110	140, 144	P, N, F	Montante reggi guide posteriore Slide holder upright Führungshalter-Pfosten Montant appui-glissières
400	33580091	70, 72, 140, 144	P, N, F	Montante reggi guide destro RH Slide holder upright Führungshalter-Pfosten RH Montant appui-glissières droite
400	33580092	70, 72, 140, 144	P, N, F	Montante reggi guide sinistro LH Slide holder upright Führungshalter-Pfosten LH Montant appui-glissières gauche
410	33510071	70, 72, 140, 144	P, N, F	Guida per griglie DX-SX RH-LH Pair of slides Paar Schienen RH-LH Pair de glissières gauche-droite

P=+2°+10°C

N=-2°+8°C

F=-21°-18°C