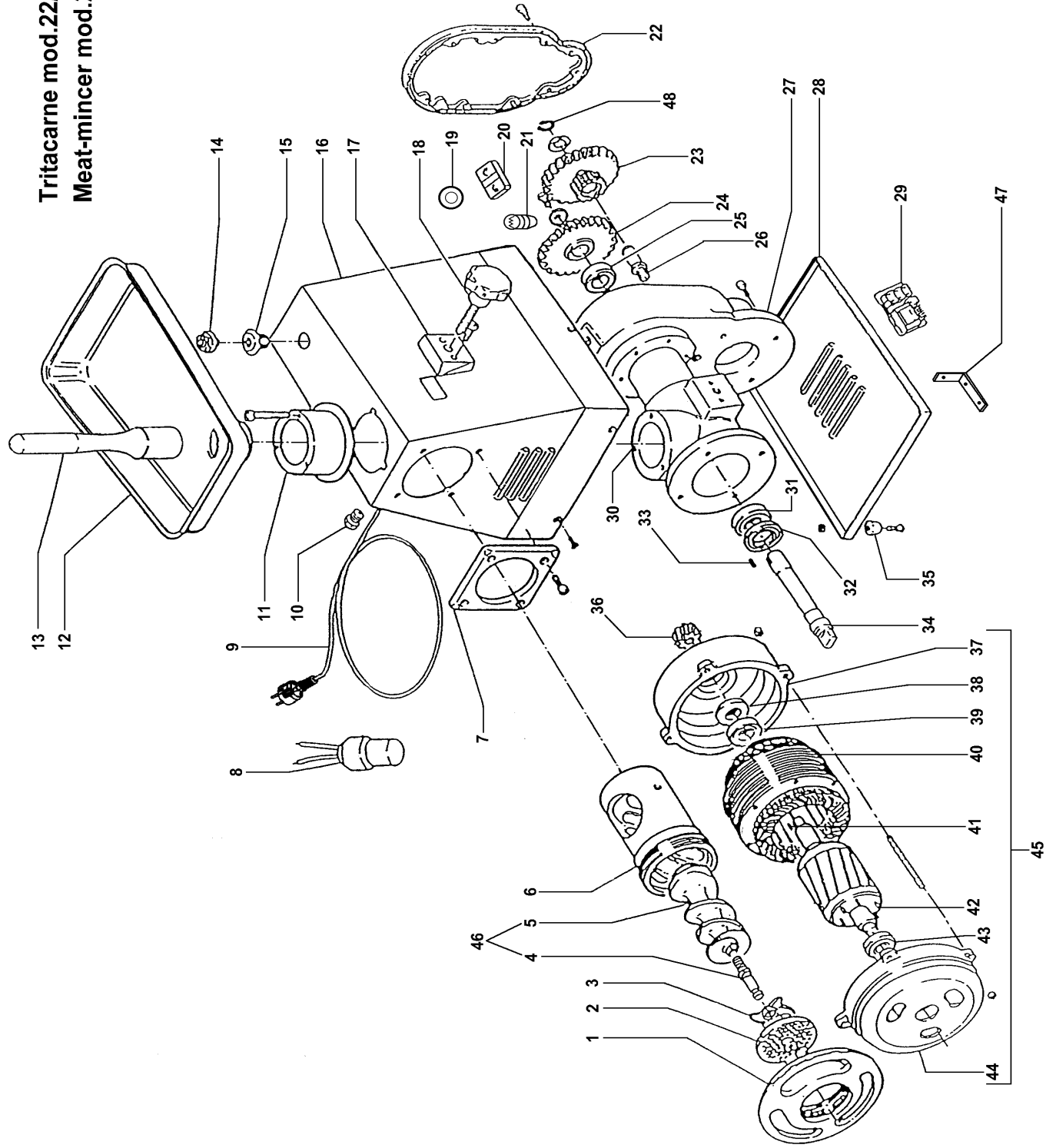


Tritacarne mod.22/S
Meat-mincer mod.22/S



TRITACARNE MOD.22/S MEAT-MINCER MOD.22/S

RIF.	CODICE / CODE	DIN - UNI	DESCRIZIONE / DESCRIPTION
1	SL0197		Ghiera inox / Stainless steel locking ring
1	SL0196	01/01/00 f.p.(*)	Ghiera alluminio / Aluminium locking ring
2	//////////		Coltello / Cutter
3	//////////		Piastra / Plate
4	SL0823		Perno / Pivot
4	SL0824		Perno (Unger) / Pivot (Unger)
5	SL0212		Coclea inox / Stainless steel screw shaft
5	SL0211	01/01/00 f.p.(*)	Coclea ghisa / Cast iron screw shaft
6	SL0214		Bocchettone inox / Stainless steel sleeve
6	SL0213	01/01/00 f.p.(*)	Bocchettone ghisa / Cast iron sleeve
6	SL0298		Bocchettone inox (Unger) / Stainless steel sleeve (Unger)
7	SL0215		Flangia / Flange
8	SL2311	25µF	Condensatore / Condenser
9	SL1841	3Ph+Gnd	Cavo elettrico trifase / Electric cable (triple-phase)
9	SL1671	1Ph+N+Gnd	Cavo elettrico monofase / Electric cable (single-phase)
10	SL1052	PG11	Pressacavo / Cable clamp
11	SL0195		Mozzo / Hub
12	SL0135		Tramoggia / Hopper
13	SL0134		Pestello / Pusher
14	SL0253		Tappo / Tap
15	SL0251		Raccordo / Nipple
16	SL0250		Carcassa / Housing
17	SL0249		Flangia / Flange
18	SL0248		Pomello / Knob
19	SL0945		Pulsante stop / Stop push button
20	SL1466		Pulsante inversione / Inversion push button
21	SL1677	36V 2W	Lampadina / Bulb
22	SL0245		Coperchio / Cover
23	SL0243		Ingranaggio / Gear
24	SL0242		Ingranaggio / Gear
25	SL0241	6005 2RS	Cuscinetto / Bearing
26	SL0240		Albero / Shaft
27	SL0827		Scatola / Box
28	SL0237		Fondo / Bottom
29	SL0999		Scheda elettronica / Electronic card
30	SL0239		Corpo / Casing
31	SL0233	6205 2RS	Cuscinetto / Bearing
32	SL0232	30x52x10	Paraolio / Oil seal
33	SL1211	8x7x12	Linguetta / Key
34	SL0230		Albero / Shaft
35	SL0235		Piedino / Foot
36	SL0225		Ingranaggio / Gear
37	SL0227		Calotta / Cap
38	SL0260	25x47x10	Paraolio / Oil seal
39	SL0202	6005 2RS	Cuscinetto / Bearing
40	SL0221	230-400V/3Ph/50Hz	Statore trifase / Triple-phase stator
40	SL0222	230V/1Ph/50Hz	Statore monofase / Single-phase stator
41	SL0262	5x5x14	Linguetta / Key
42	SA6800	230-400V/3Ph/50Hz	Rotore trifase / Triple-phase rotor
42	SA6900	230V/1Ph/50Hz	Rotore monofase / Single-phase rotor
43	SL0131	6203 2RS	Cuscinetto / Bearing
44	SL0217		Calotta / Cap
45	SA9600	400V/3Ph/50Hz	Gruppo motore trifase / Triple-phase motor (assembly)
45	SA9700	230V/1Ph/50Hz	Gruppo motore monofase / Single-phase motor (assembly)
46	SA5500		Gruppo coclea inox/Stainless steel screw shaft (assembly)
46	SA5400	01/01/00 f.p.(*)	Gruppo coclea ghisa / Cast iron screw shaft (assembly)
46	SA5700		Gruppo coclea inox Unger/ Unger stainless steel screw shaft (assembly)
47	SL0932		Staffa / Bracket
48	SL0017	ø17	Seeger Esterno / Spring Ring

(*): fuori produzione / out of production