



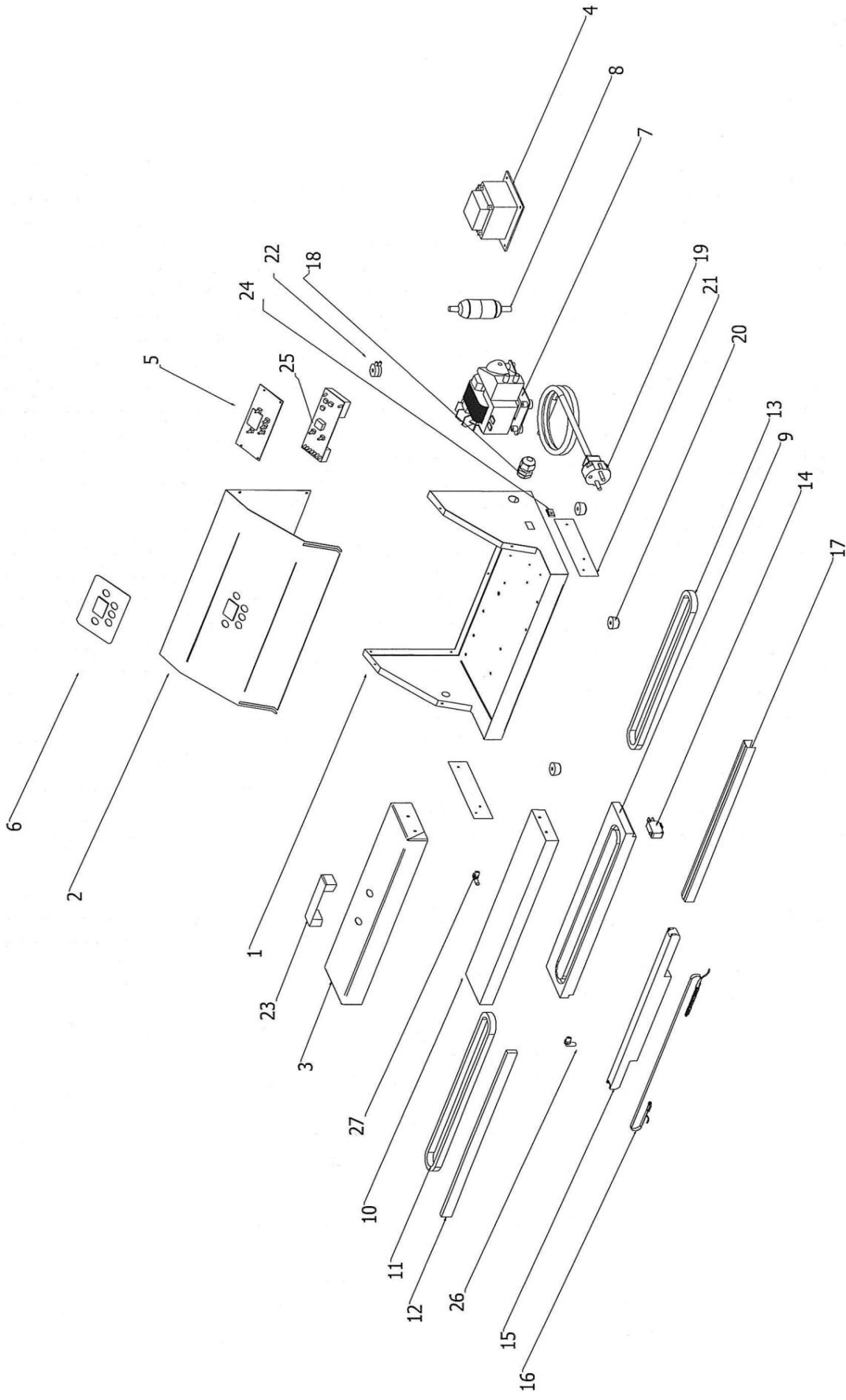
Vorbereitung Vakuuiergerät

Artikel-Nr. 442017 (MVB330)

Explosionszeichnung / Ersatzteile

Bitte bei Ersatzteilbestellung immer Artikelnummer und Seriennummer mit angeben!

SPARE PART LIST / ESPLOSO MVB330-430



SPARE PART LIST / ESPLOSO MVB330-340

| REF. | CODE CODICE | DESCRIPTION | DESCRIZIONE | PRICE PREZZO |
|------|-------------|------------------------------------|-----------------------------------|--------------|
| 1 | | Chassis MVB330 | Carcassa MVB330 | |
| 1 | | Chassis MVB430 | Carcassa MVB430 | |
| 2 | | Cover MVB330 | Carter MVB330 | |
| 2 | | Cover MVB430 | Carter MVB430 | |
| 3 | | Cover MVB330 | Carter MVB330 | |
| 3 | | Cover MVB430 | Carter MVB430 | |
| 4 | | Transformer MVB330 | Trasformatore MVB330 | |
| 4 | | Transformer MVB430 | Trasformatore MVB430 | |
| 5 | R00216 | Display | Display | |
| 6 | V00015 | Label | Etichetta | |
| 7 | | Pump MVB330 | Pompa MVB330 | |
| 7 | | Pump MVB430 | Pompa MVB430 | |
| 8 | | Silencer | Silenziatore | |
| 9 | | Lower decompression chamber MVB330 | Camera decompressione inf. MVB330 | |
| 9 | | Lower decompression chamber MVB430 | Camera decompressione inf. MVB430 | |
| 10 | | Upper decompression chamber MVB330 | Camera decompressione sup. MVB330 | |
| 10 | | Upper decompression chamber MVB430 | Camera decompressione sup. MVB430 | |
| 11 | | Gasket MVB330 | Guarnizione MVB330 | |
| 11 | | Gasket MVB430 | Guarnizione MVB430 | |
| 12 | | Contrast rubber MVB330 | Gomma contrasto MVB330 | |
| 12 | | Contrast rubber MVB430 | Gomma contrasto MVB430 | |
| 13 | | Gasket MVB330 | Guarnizione MVB330 | |
| 13 | | Gasket MVB430 | Guarnizione MVB430 | |
| 14 | | Microswitch | Microinterruttore | |
| 15 | | Support MVB330 | Supporto MVB330 | |
| 15 | | Support MVB430 | Supporto MVB430 | |
| 16 | | Heating element MVB330 | Resistenza MVB330 | |
| 16 | | Heating element MVB430 | Resistenza MVB430 | |
| 17 | | Teflon MVB330 | Teflon MVB330 | |
| 17 | | Teflon MVB430 | Teflon MVB430 | |
| 18 | | Press cable | Pressacavo | |
| 19 | | Electric cable | Cavo elettrico | |
| 20 | | Foot MVB330 | Piedino MVB330 | |
| 20 | | Foot MVB430 | Piedino MVB430 | |
| 21 | | Lever + spring MVB330 | Leva + molla MVB330 | |
| 21 | | Lever + spring MVB430 | Leva + molla MVB430 | |
| 22 | | Vacuum sensor | Sensore vuoto | |
| 23 | | Handle | Maniglia | |
| 24 | | Switch | Interruttore | |
| 25 | | Electronic card | Scheda elettronica | |
| 26 | | External nozzle MVB330 | Ugello esterno MVB330 | |
| 26 | | External nozzle MVB430 | Ugello esterno MVB430 | |
| 27 | | Internal nozzle | Ugello interno | |