

WAREWASHER

ELECTROMECHANICAL SWITCHES
SIMPLE BODY VERSION

TYPE: 17R

Accessories

BOOSTER PUMP

DVGW

DETERGENT DISPENSER

DRAIN PUMP

BREAK TANK

Spare parts



1. Spare parts

General body parts.....	7
Lockup system	9
Control panel	11
Control electric components.....	13
Solenoid valve group	15
Break Tank	17
Booster pump.....	19
DVGW	21
Shining product dosing device group .	23
Boiler group	25
Derivation group	27
Wash pump	29
Dosing device group	31
Dosing device group	33
Drain pump group.....	35
Pressure switch group with air trap ...	37

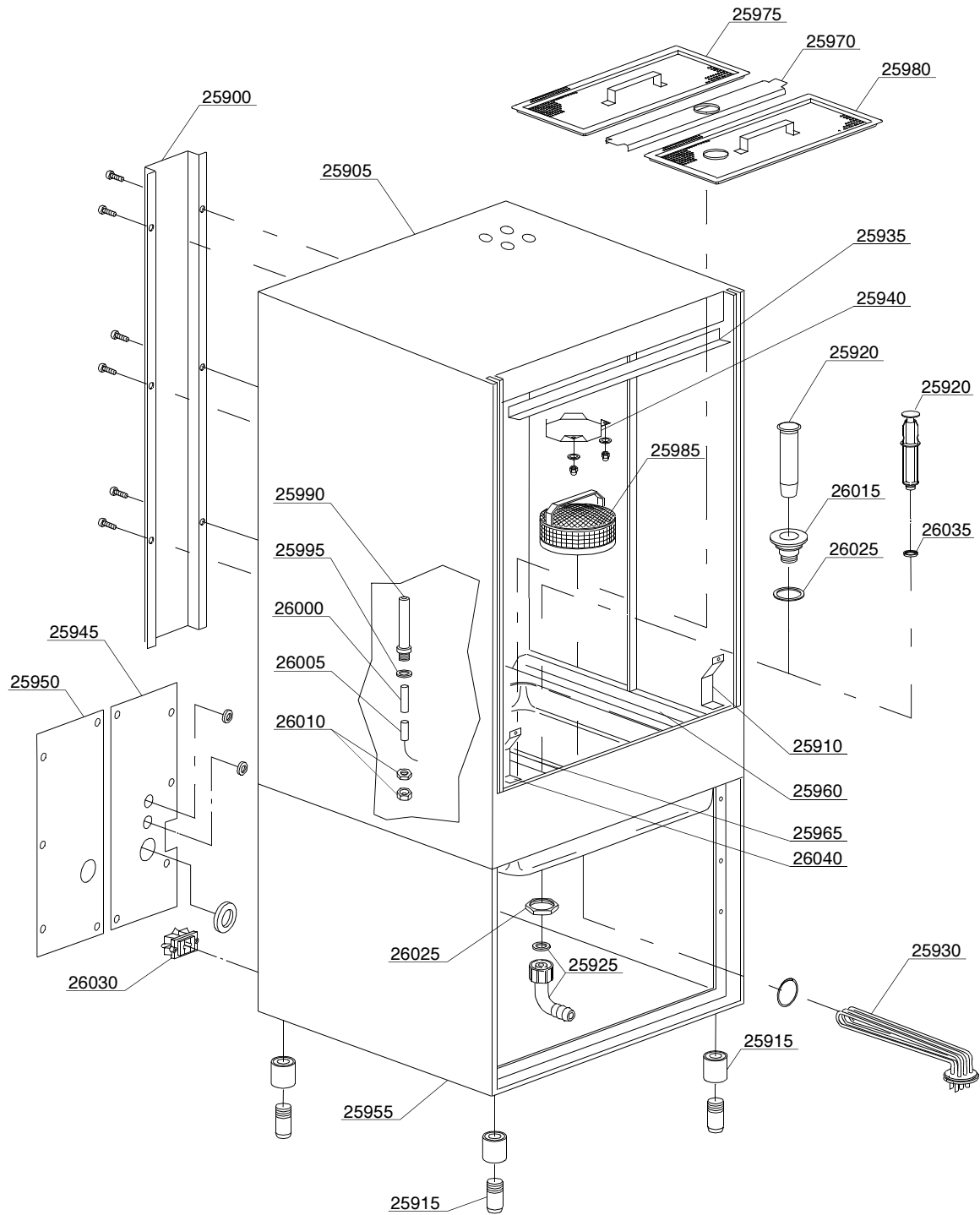
Turret group with rotating arms39

1.1 Voltage codes

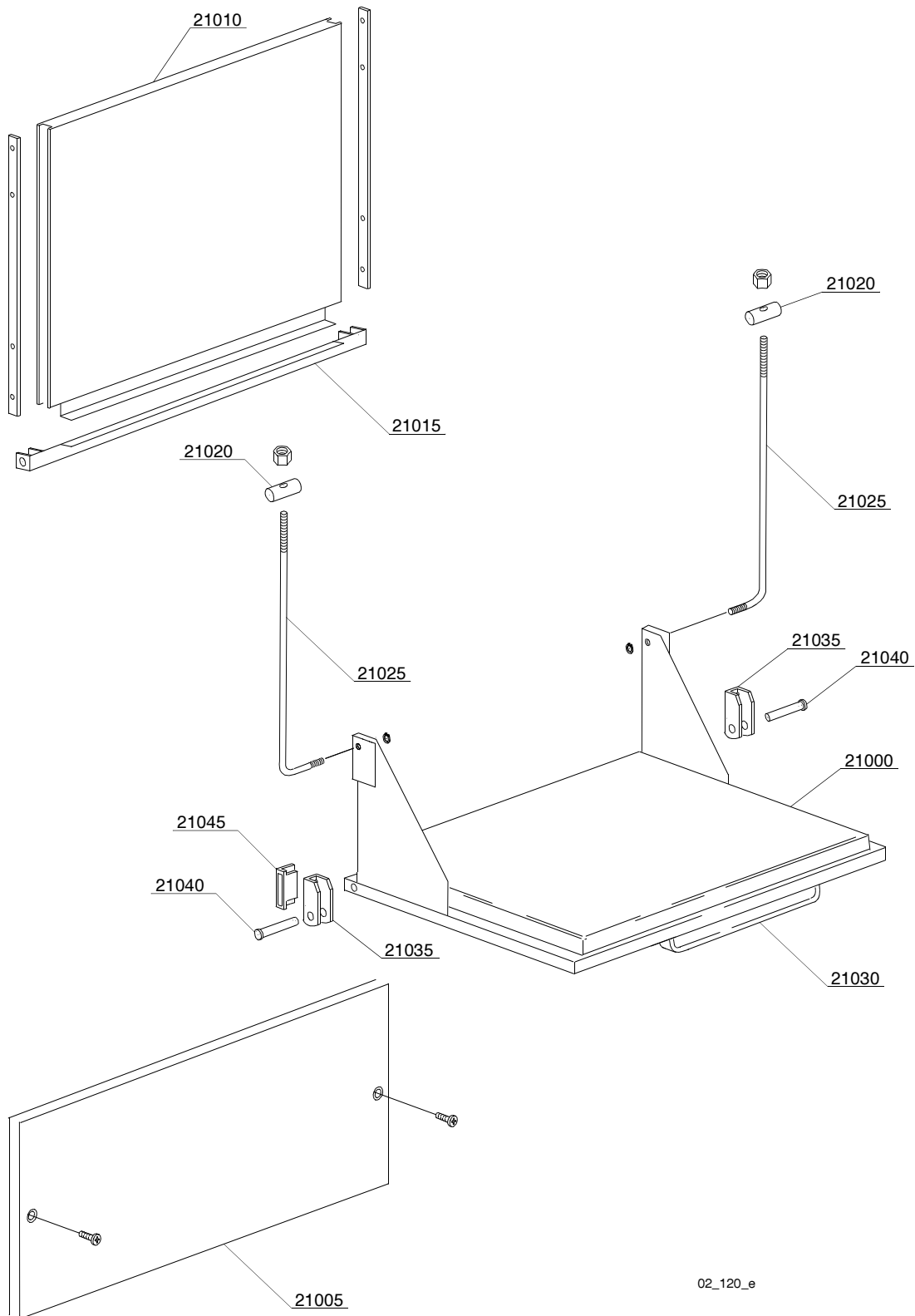
Voltage code	Voltage
A	3/N/PE~400/230V 50Hz
B	~250V 16A 50Hz
C	3/N/PE~380/220V 50Hz
D	3/PE~200V 50-60Hz
F	2/PE 220-240V 50Hz
G	3/N/PE~415/240V 50Hz
H	3/PE~230V 50Hz
I	3/PE~220V 60Hz
J	3/PE~380 50Hz
K	3/PE~400V 50Hz
L	3/PE~415V 50Hz
M	3/PE~440V 60Hz
N	3/PE~460V 60Hz
O	3/PE~480V 60Hz
P	1/N/PE~220-240V 50Hz
R	2/PE~220-230V 60Hz
S	3/N/PE~400/230V 50Hz
T	3/PE~230V 60Hz

1.2 Product codes

Product code	Full name
Model codes	
em	ELECTROMECHANICAL SWITCHES
mc	SIMPLE BODY VERSION
Type codes	
17R	17R
Accessory codes	
pap	BOOSTER PUMP
dvgw	DVGW
dde	DETERGENT DISPENCER
ps	DRAIN PUMP
bt	BREAK TANK



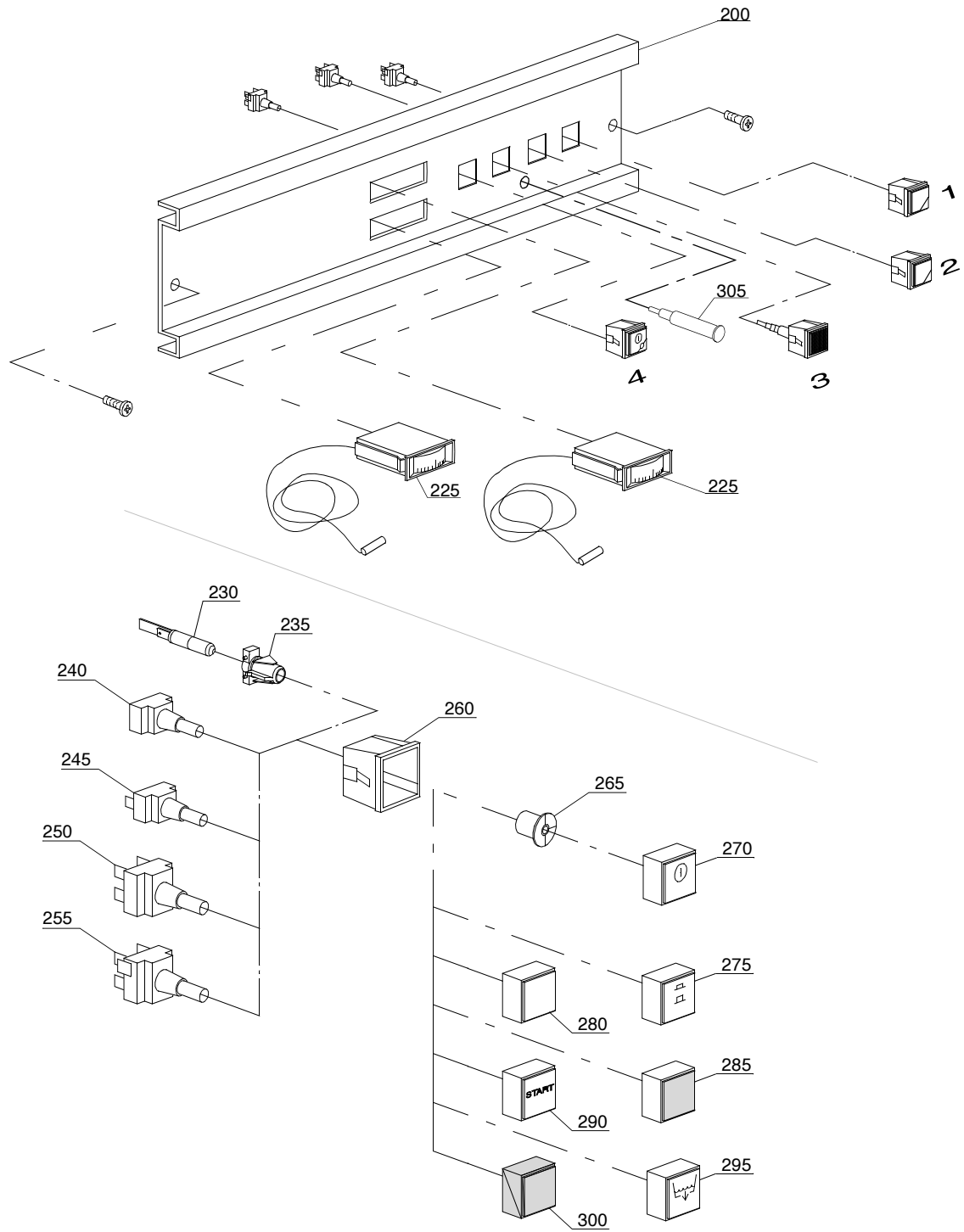
01_022_e



02_120_e

Spare parts

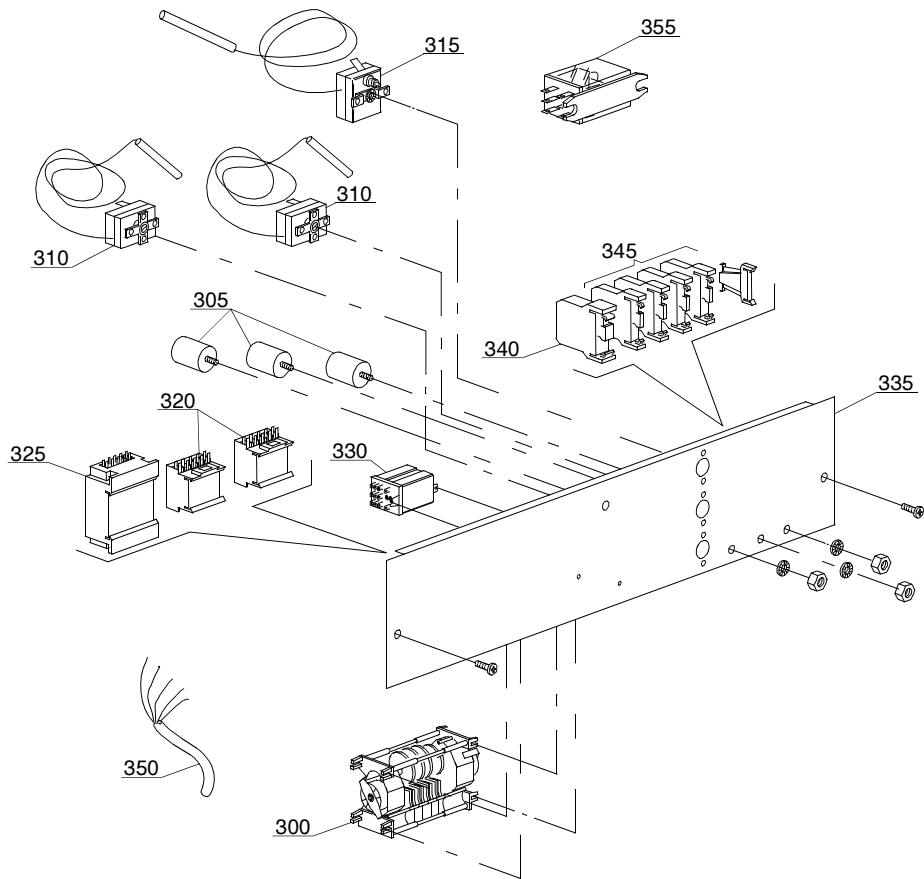
ID	P-code	Model	Type	Accessory	Voltage	Description
MODULE:Lockup system						
21000	23206		17R			Door with steel handle
21005	23208		17R			Lower door
21010	23207		17R			Upper door
21015	23223		17R			Levers support
21020	22219		17R			Small cylinders
21025	23220		17R			Door rod
21030	22215		17R			Stainless steel handle
21035	22206/B		17R			Door support
21040	22220/A		17R			Hinge door
21045	80232		17R			Reed magnet



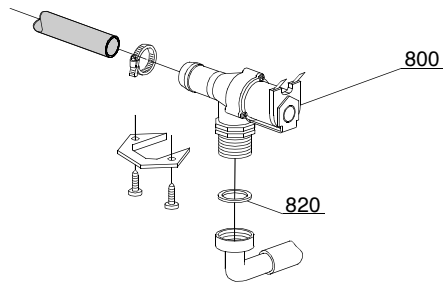
03_017_e

Spare parts

ID	P-code	Model	Type	Accessory	Voltage	Description
MODULE:Control panel						
200	22200/C		17R			Control panel
225	10500005		17R			Thermometer
230	15826		17R			Pilot light
235	15827		17R			Pilot light support
240	15844		17R			Key support
245	15813		17R			16A unipolar push button
250	15812		17R			16A switch
250	15800		17R			16A bipolar push button
255	15811		17R			16A bipolar switch
255	15811/A		17R			16A bipolar switch push button
260	15815		17R			Square grey single support
260	15842		17R			Square black single support
265	15824		17R			Green-orange cam
270	15874		17R			Green ON-OFF key
270	15988		17R			Blue ON-OFF key
270	15989		17R			Yellow ON-OFF key
275	15996		17R			Green time push selector switch
275	15877		17R			Blue time push selector switch
275	15839		17R			Yellow time push selector switch
280	15847		17R			Green key
280	15817		17R			Blu key
280	15819		17R			Yellow key
285	15825		17R			Green gem
290	15873		17R			Green start key
290	15986		17R			Blue start key
290	15987		17R			Yellow start key
295	15854		17R	dp		Green drain pump key
295	15990		17R	dp		Blu drain pump key
295	15991		17R	dp		Yellow drain pump key
300	15880		17R			Grey plug
300	15845		17R			Black plug
305	10711/B		17R	dp		Pilot light



04_011_e

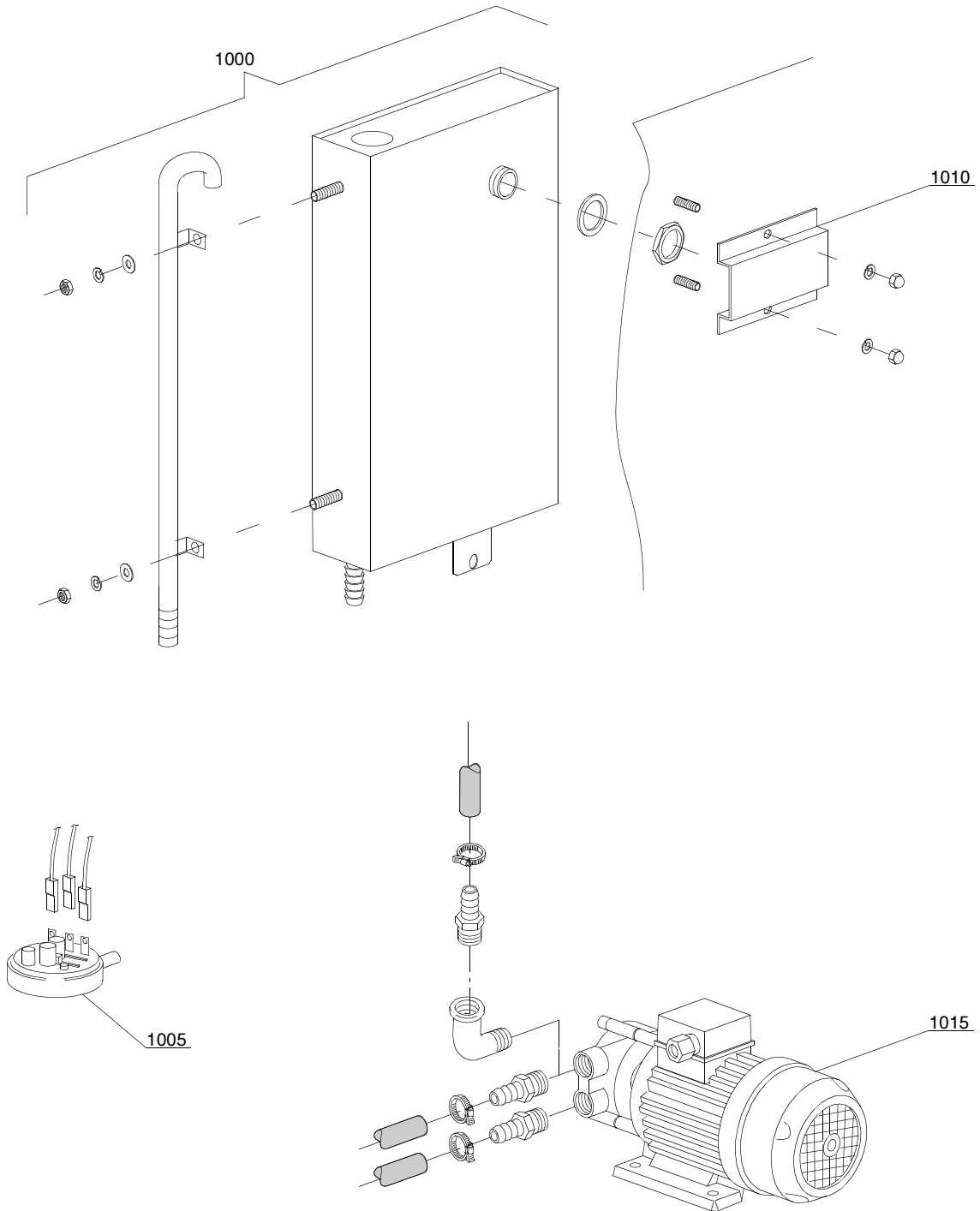


05_005_e

Spare parts

ID	P-code	Model	Type	Accessory	Voltage	Description
MODULE:Solenoid valve group						
800	30001000		17R			Single solenoid valve
820	N.C.		17R			Pression reducing valve

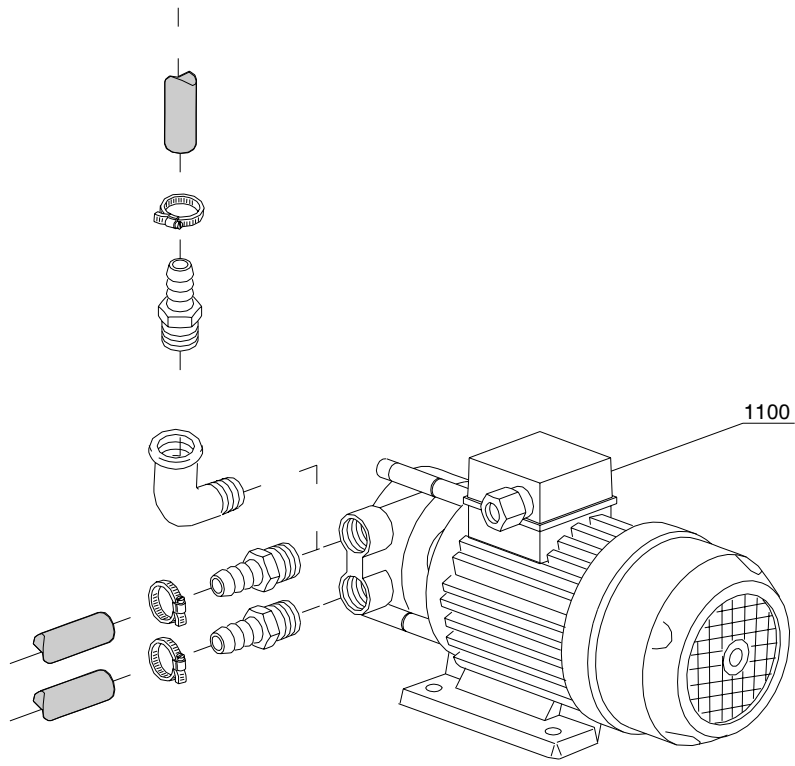
06_001_e



Spare parts

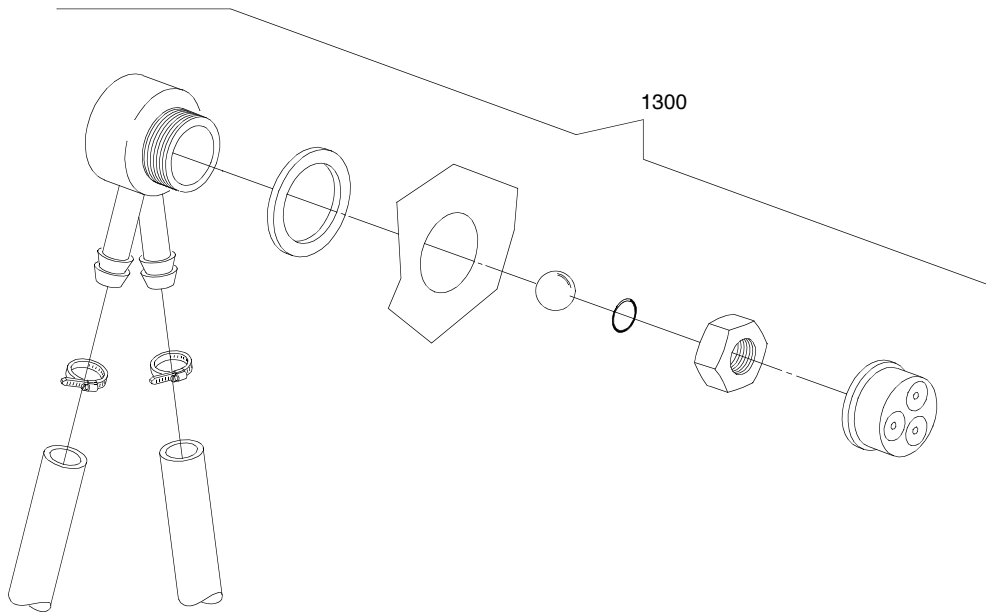
ID	P-code	Model	Type	Accessory	Voltage	Description
MODULE:Break Tank						
1000	15735		17R	bt		Break tank assembly
1005	10706/A		17R	bt		47-27 pressure switch
1010	15738		17R	bt		Hole protection
1015	15100		17R	bt		Booster pump

07_002_e



Spare parts

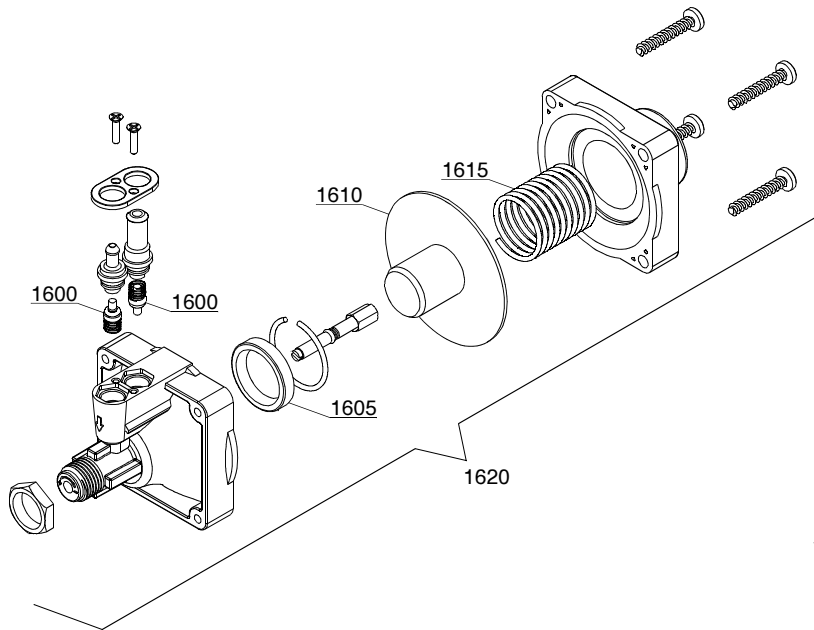
ID	P-code	Model	Type	Accessory	Voltage	Description
MODULE:Booster pump						
1100	15100		17R	bp		Booster pump



08_005_e

Spare parts

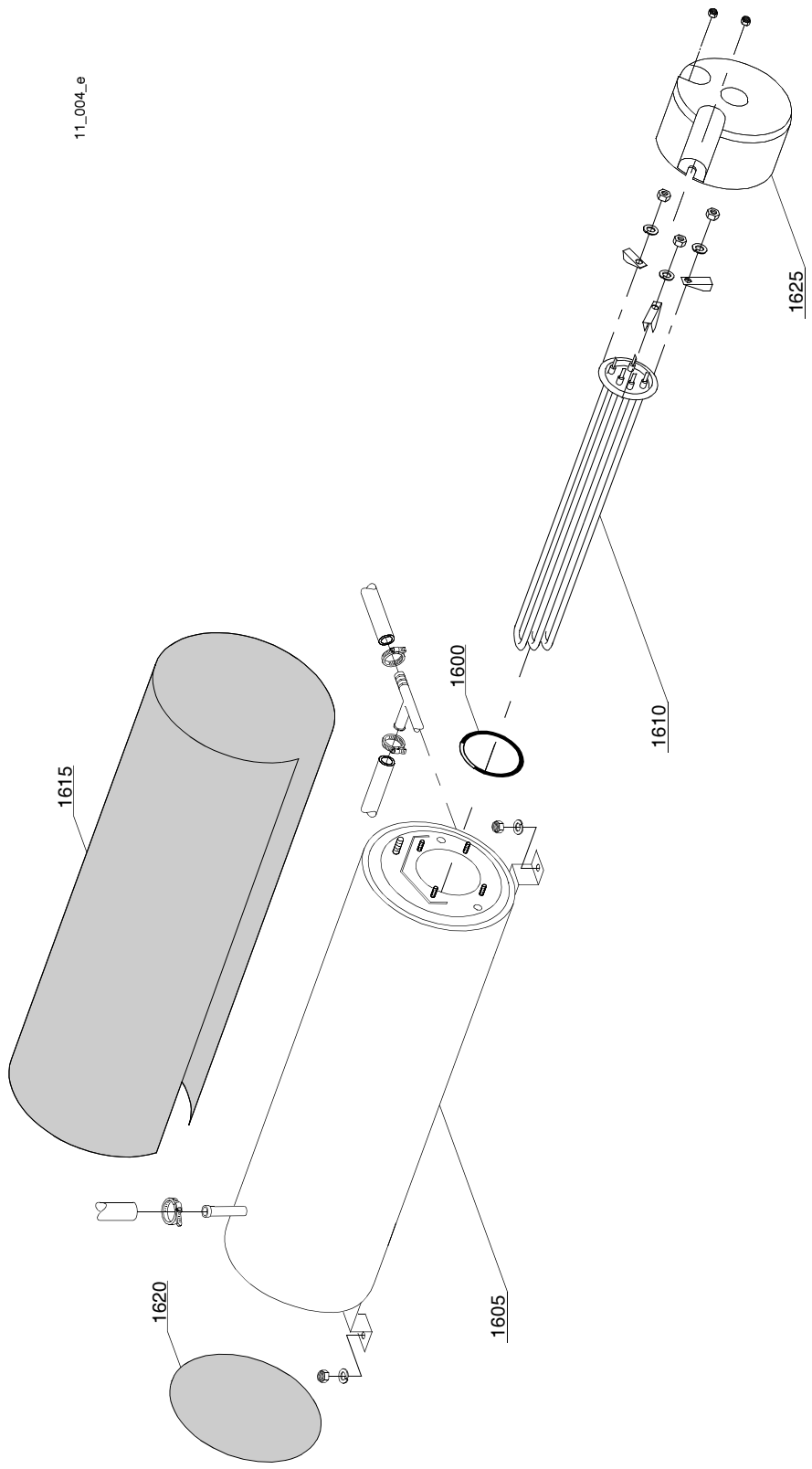
ID	P-code	Model	Type	Accessory	Voltage	Description
MODULE: DVGW						
1300	999900006		17R	dvgw		DVGW assembly



10_003_e

Spare parts

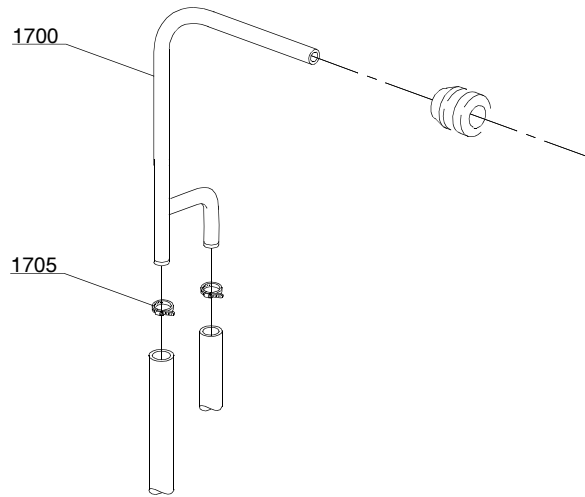
ID	P-code	Model	Type	Accessory	Voltage	Description
MODULE:Shining product dosing device group						
1600	10805		17R			Tecnopro dosing valve
1605	10806		17R			O22 gasket
1610	10807		17R			Membrane
1615	10808		17R			Spring
1620	10599999		17R			Shining product dosing device
1625	12525		17R			Counter-weight
1630	15058		17R			Small filter



Spare parts

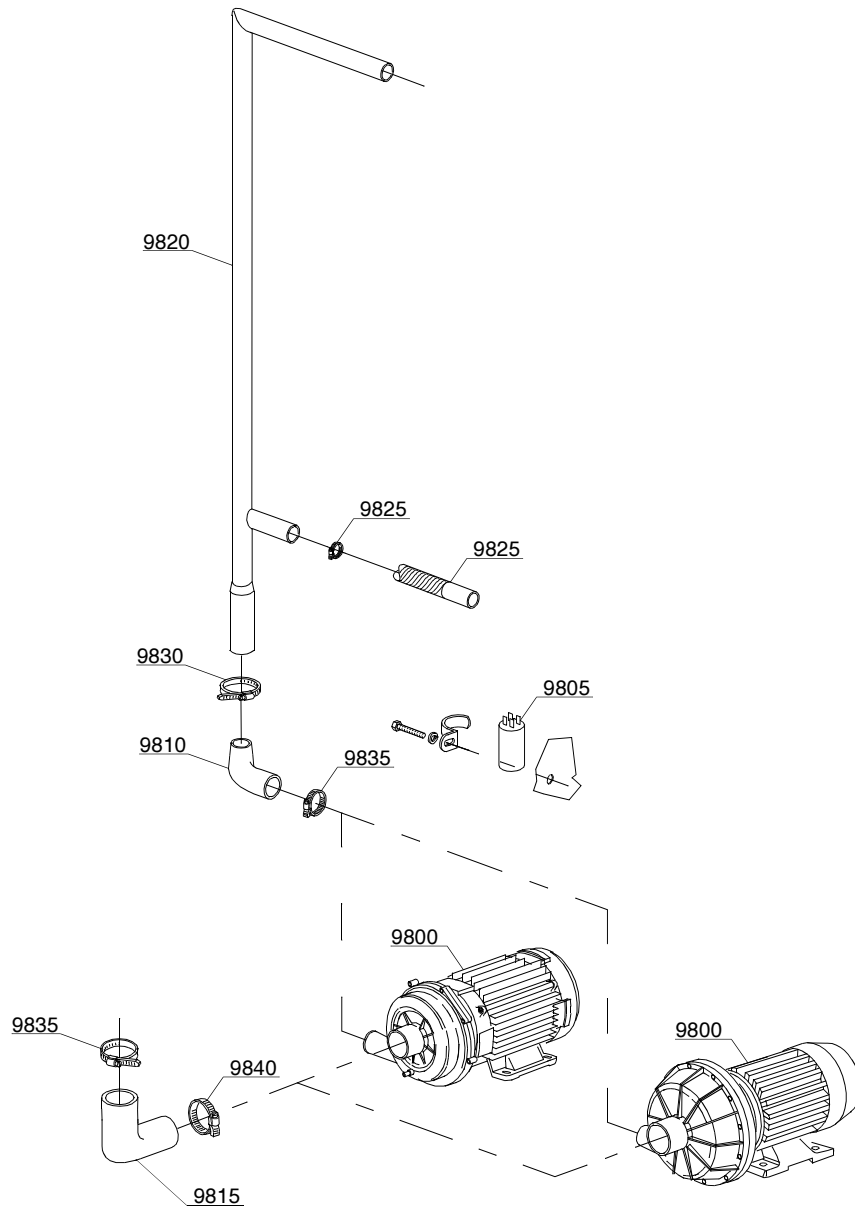
ID	P-code	Model	Type	Accessory	Voltage	Description
MODULE:Boiler group						
1600	13015		17R			6225 OR 160 NBR gasket
1605	22002		17R			Boiler
1610	30001010		17R			6KW heating element
1610	30001011		17R			9KW heating element
1615	30002030		17R			Insulating boiler
1620	75205		17R			O160 bottom

12_007_e



Spare parts

ID	P-code	Model	Type	Accessory	Voltage	Description
MODULE:Derivation group						
1700	15045/B		17R			3 ways derivation
1705	11807		17R			12/22 clamp

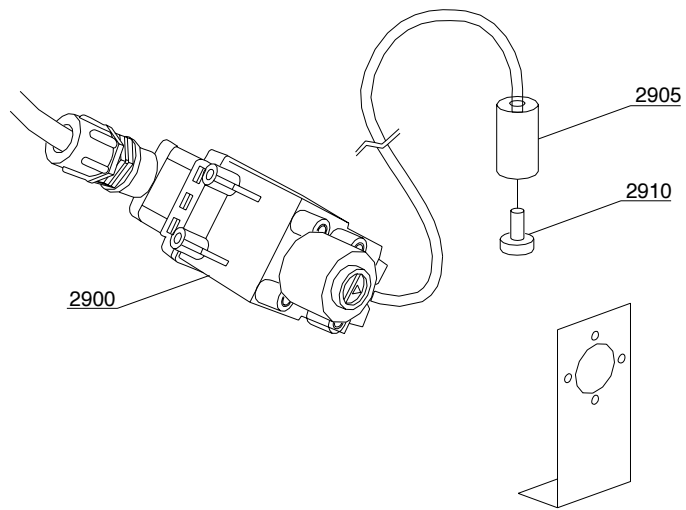
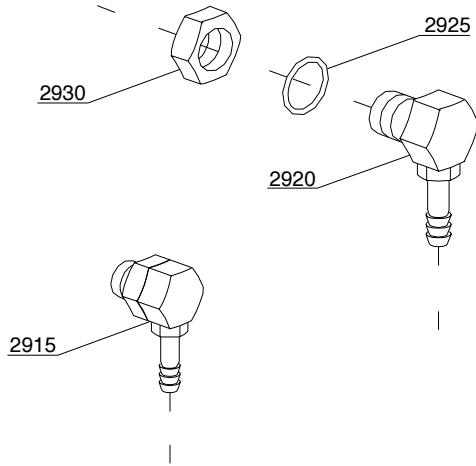


13_108_e

Spare parts

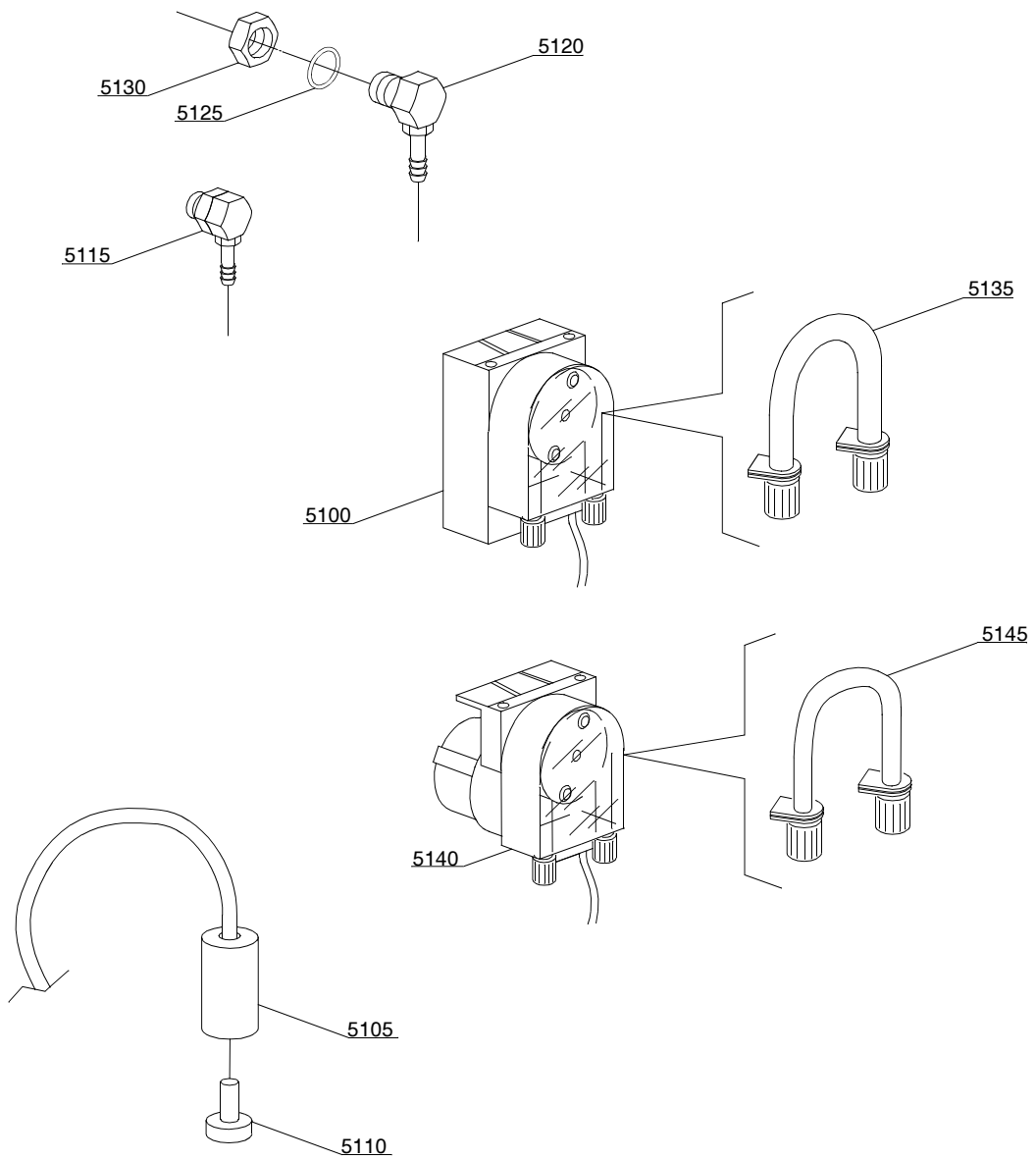
ID	P-code	Model	Type	Accessory	Voltage	Description
MODULE:Wash pump						
9800	88106		17R			2,7Hp wash pump
9810	16170/M		17R			Delivery side pipe coupling
9815	15032/A		17R			Suction pipe coupling
9820	23203		17R			Wash ramp
9825	15033/A		17R			Lower delivery wash pipe
9830	11809		17R			30/45 clamp
9835	11824		17R			50/70 clamp
9840	2902491		17R			60/80 clamp

14_002_e



Spare parts

ID	P-code	Model	Type	Accessory	Voltage	Description
MODULE:Dosing device group						
2900	15108/L		17R	dd		Lang dosing device
2905	12525		17R	dd		Counter-weight
2910	15058		17R	dd		Small filter
2915	15123		17R	dd		Compleat plastic injector
2920	15148		17R	dd		Steel injector
2925	15159		17R	dd		OR gasket
2930	10200205		17R	dd		M12x1 stainless steel nut

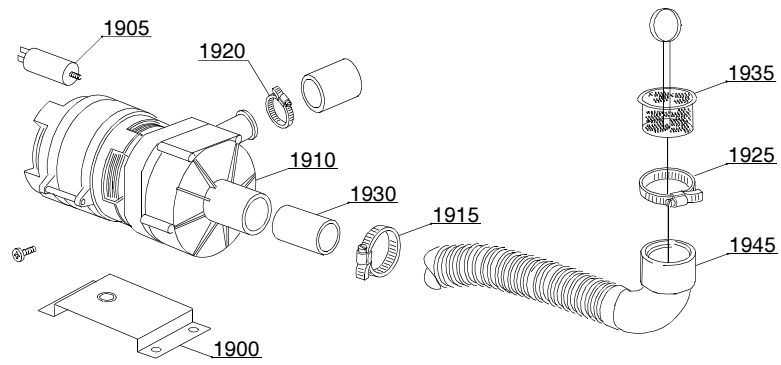


14_004_e

Spare parts

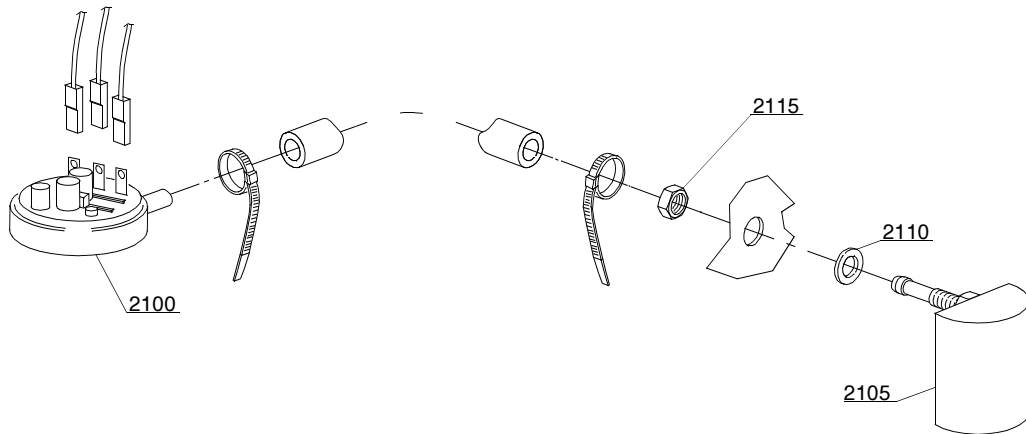
ID	P-code	Model	Type	Accessory	Voltage	Description
MODULE:Dosing device group						
5100	15985		17R	dd		Seko dosing device
5105	12525		17R	dd		Counter-weight
5110	15058		17R	dd		Small filter
5115	15123		17R	dd		Complet plastic injector
5120	15148		17R	dd		Steel injector
5125	15159		17R	dd		OR gasket
5130	10200205		17R	dd		M12x1 stainless steel nut
5135	15185		17R	dd		Seko thermoplastic pipe
5140	15985		17R	dd		Germac dosing device
5145	15108/E		17R	dd		Germac thermoplastic pipe

15_003_e



Spare parts

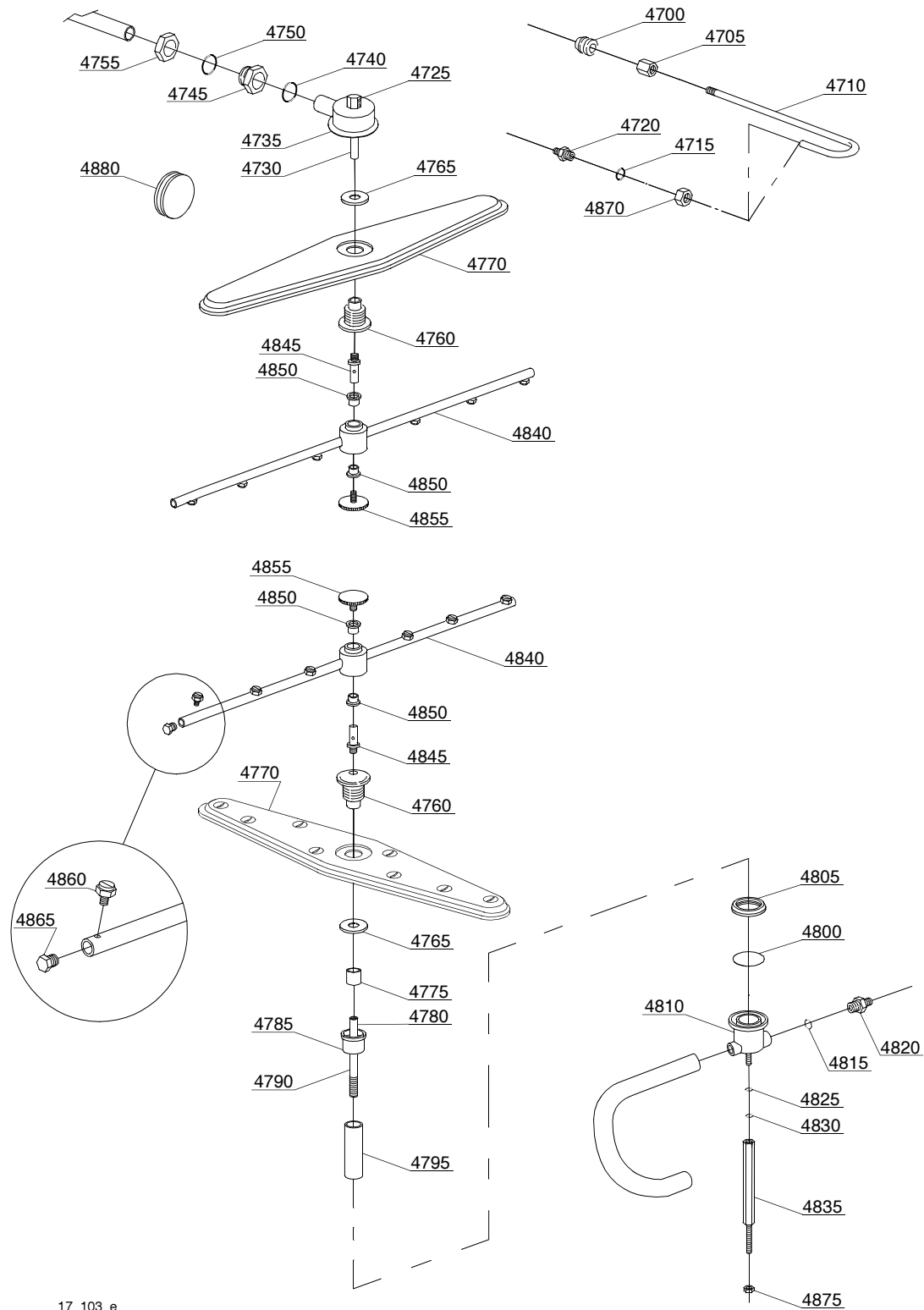
ID	P-code	Model	Type	Accessory	Voltage	Description
MODULE:Drain pump group						
1905	10702		17R	dp		5 uF condenser
1910	10501/A		17R	dp		Drain pump
1915	11806		17R	dp		25/40 clamp
1920	11836		17R	dp		20/32 clamp
1925	11809		17R	dp		30/45 clamp
1930	18044		17R	dp		O28 top wash pipe
1935	10200039		17R	dp		Flow drain filter
1945	18767		17R	dp		Drain coude/pump connection pipe



16_001_e

Spare parts

ID	P-code	Model	Type	Accessory	Voltage	Description
MODULE:Pressure switch group with air trap						
2100	75950		17R			86-59 pressure switch
2105	10911/C		17R			Air trap assembly
2110	13301		17R			Gasket
2115	11702		17R			M8 stainless steel nut



17_103_e

Spare parts

ID	P-code	Model	Type	Accessory	Voltage	Description
MODULE:Turret group with rotating arms						
4700	13304		17R			Pipe-pass gasket
4705	12526		17R			Stainless steel pipe coupling
4710	75066		17R			Top rinse ramp
4715	13003		17R			OR 112 NBR gasket
4720	12006		17R			O10 rinse pipe fitting
4725	75319		17R			Rinse elbow
4730	75322		17R			Top rinse axle extension
4735	75067		17R			Stainless steel turret
4740	13004		17R			OR 3137 NBR gasket
4745	15042		17R			"1" 1/4 ring nut"
4750	13008		17R			OR 147 NBR gasket
4755	15042/A		17R			Nut
4760	75320		17R			Hub for rotor
4765	75317		17R			Nut for hub
4770	75915		17R			Stainless steel wash rotor
4775	75321		17R			Spacer for hub
4780	75315		17R			Rinse axle extension
4785	15040/A		17R			Lower wash bell-shape
4790	22026		17R			Lower extension axle
4795	22050		17R			Steel pipe coupling
4800	13022		17R			OR 4150 gasket
4805	15038		17R			Ring nut connection
4810	15041/A		17R			Grey wash/rinse lower distributor
4815	13003		17R			OR 112 NBR gasket
4820	12506		17R			O10 rubber-holder
4825	11185		17R			8x16 steel plane washer
4830	13313		17R			8x24x2 gasket
4835	23303		17R			Lower tie rod
4840	75918		17R			Top/lower rinse group
4845	75323		17R			Rinse axle
4850	13330		17R			Sliding washer
4855	11101/B		17R			Stainless steel group fixing screw
4860	560018		17R			Stainless steel rinse nozzle
4865	560017		17R			Rinse arm plug
4870	12006/A		17R			O10 pipe fitting 3/8x3,5 nut 19 hexagonal
4875	11702		17R			M8 stainless steel nut
4880	13316/A		17R			DVGW hole gasket