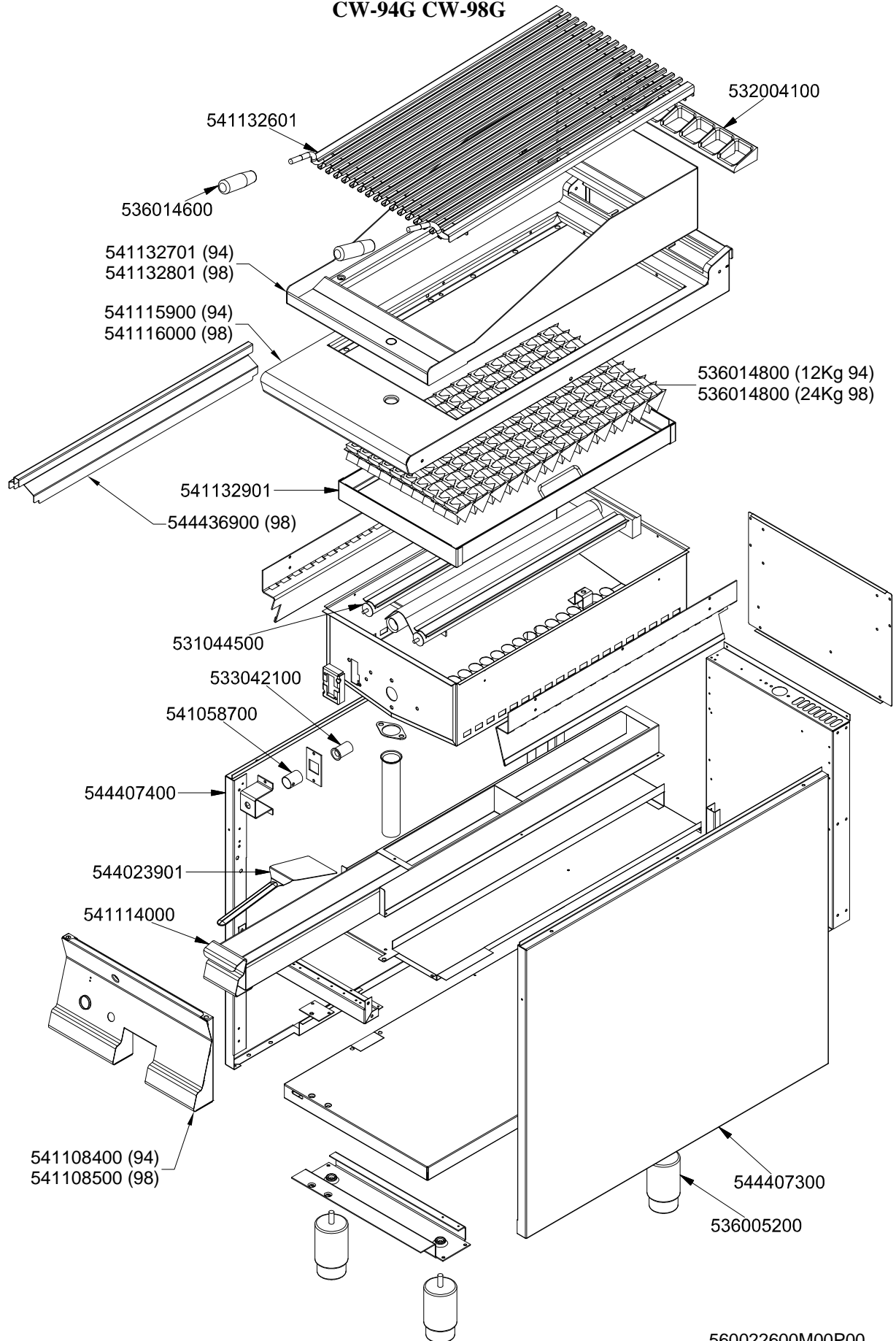


**IPERLOTUS 90**  
**GAS / GAS / GAS / GAZ**

**CW-94G CW-98G**

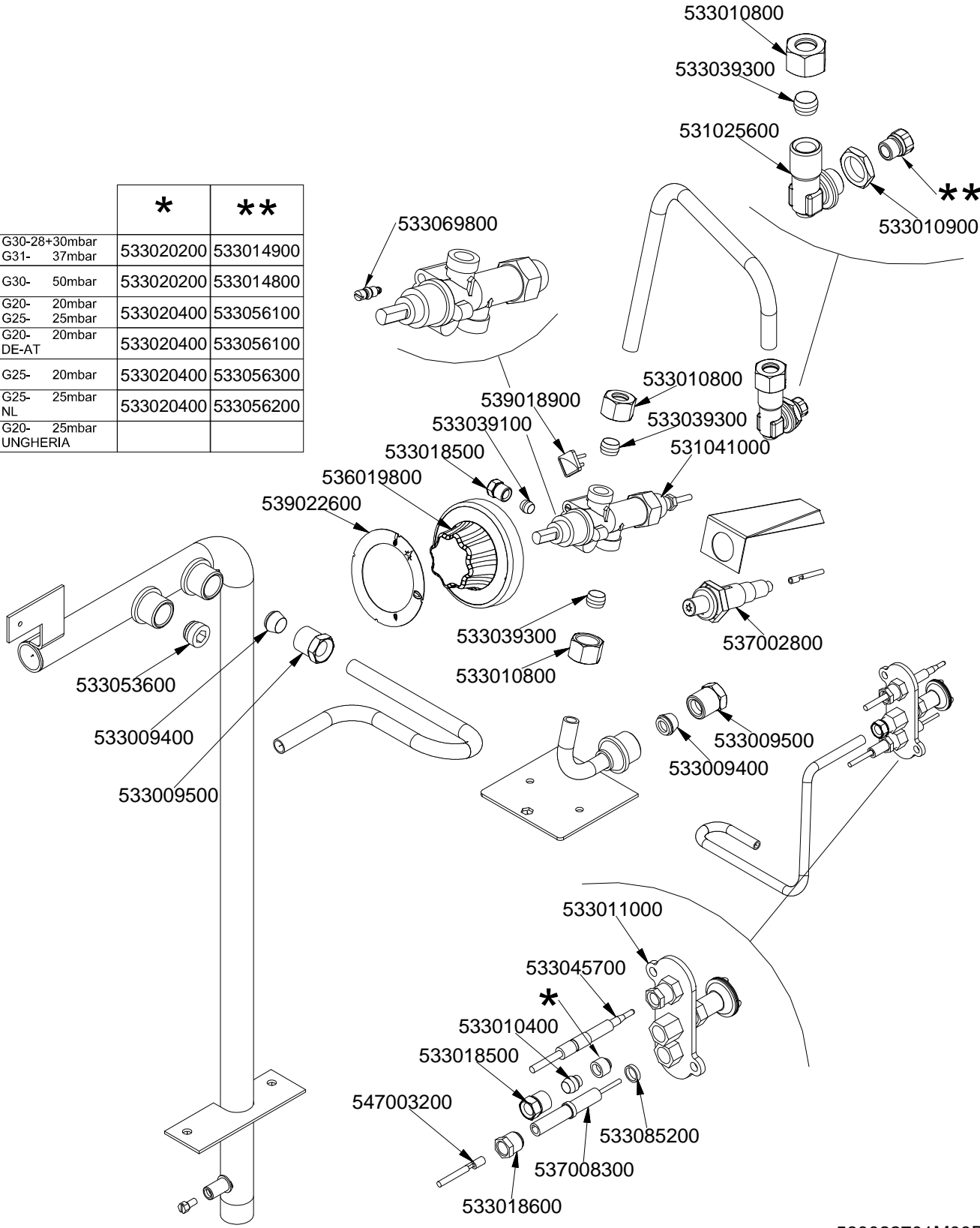


# IPERLOTUS 90

GAS / GAS / GAS / GAZ

## CW-94G CW-98G

	*	**
G30-28+30mbar G31- 37mbar	533020200	533014900
G30- 50mbar	533020200	533014800
G20- 20mbar G25- 25mbar	533020400	533056100
G20- 20mbar DE-AT	533020400	533056100
G25- 20mbar	533020400	533056300
G25- 25mbar NL	533020400	533056200
G20- 25mbar UNGHERIA		



560022701M00P00

Page	Pos	Code	Description
001		532004100	FLUE GRID L=370 70LINE (RAF)
001		541132601	GRILL FOR CW 90 LINE
001		536014600	GRIP D.28*90*M10 CW
001		541132801	SPLASH SHIELD CW-98
001		541116000	UPPER PLATE CW-98
001		536014800	LAVASTONE
001		541132901	STONE SUPPORTING FRAME CW-94G
001		544436900	CENTRAL TOP FOR SPLASH GUARD CW98
001		531044500	BURNER CW-G 90 LINE
001		533042100	AIR ADJUSTMENT BUSHING CW-G
001		541058700	
001		544407400	LEFT SIDE PANEL 70 LINE
001		544023901	SPATTLE FOR FRY-TOP
001		541114000	DRAINER DRAWER CW-G 90LINE
001		541108500	CONTROL PANEL CW-78/98G
001		544407300	RIGHT SIDE PANEL 90 LINE
001		536005200	INOX LEG 2" 120-180 M10
002		533018600	PLUG FITTING
002		537008300	ROUND PLUG §2,4- LONG ELECTRODE
002		533020200	PILOT JETS 0160 FOR LPG §30
002		533020400	NOZZLE 0160 (NATURAL GAS) 51
002		533014900	NOZZLE §150 CH12*14 F-FQ5 L-FQ6
002		533014800	NOZZLE §135 CH12*14,0
002		533056100	NOZZLE §220 CH12*14
002		533056300	NOZZLE §240 CH12*14
002		533056200	NOZZLE §230 CH12*14
002		533085200	
002		547003200	HIGH-VOLTAGE CABLE TUBE.§2 L=500
002		533018500	FITTING FOR BICONE D.6 M10*1
002		533010400	BICONE D.6
002		533045700	THERMOCOUPLE M9*1 500
002		533011000	PILOT BURNER 3 FLAMES 320
002		531041000	SAFETY TAP 21S-B
002		539022600	GRADUATED STICKER FOR KNOB
002		533039300	BICONE §10
002		533010800	TUBE NUT D.10 M16*1,5
002		533009400	BICONE 10S
002		533009500	NIPPLE FOR BICONE 10S
002		533053600	EUROSIT VALVE PLUG
002		537002800	PIEZOELECTRIC IGNITION M18
002		536019800	BLACK KNOB §70 PIN §8*6,5
002		533069800	BY PASS COCK §110 20S-21S
002		539018900	INDEX FOR KNOB
002		531025600	ELBOW 90° NOZZLE-HOLDER §10 PIPE
002		533010900	NUT M14*1 H.4
002		533039100	BICONE §6