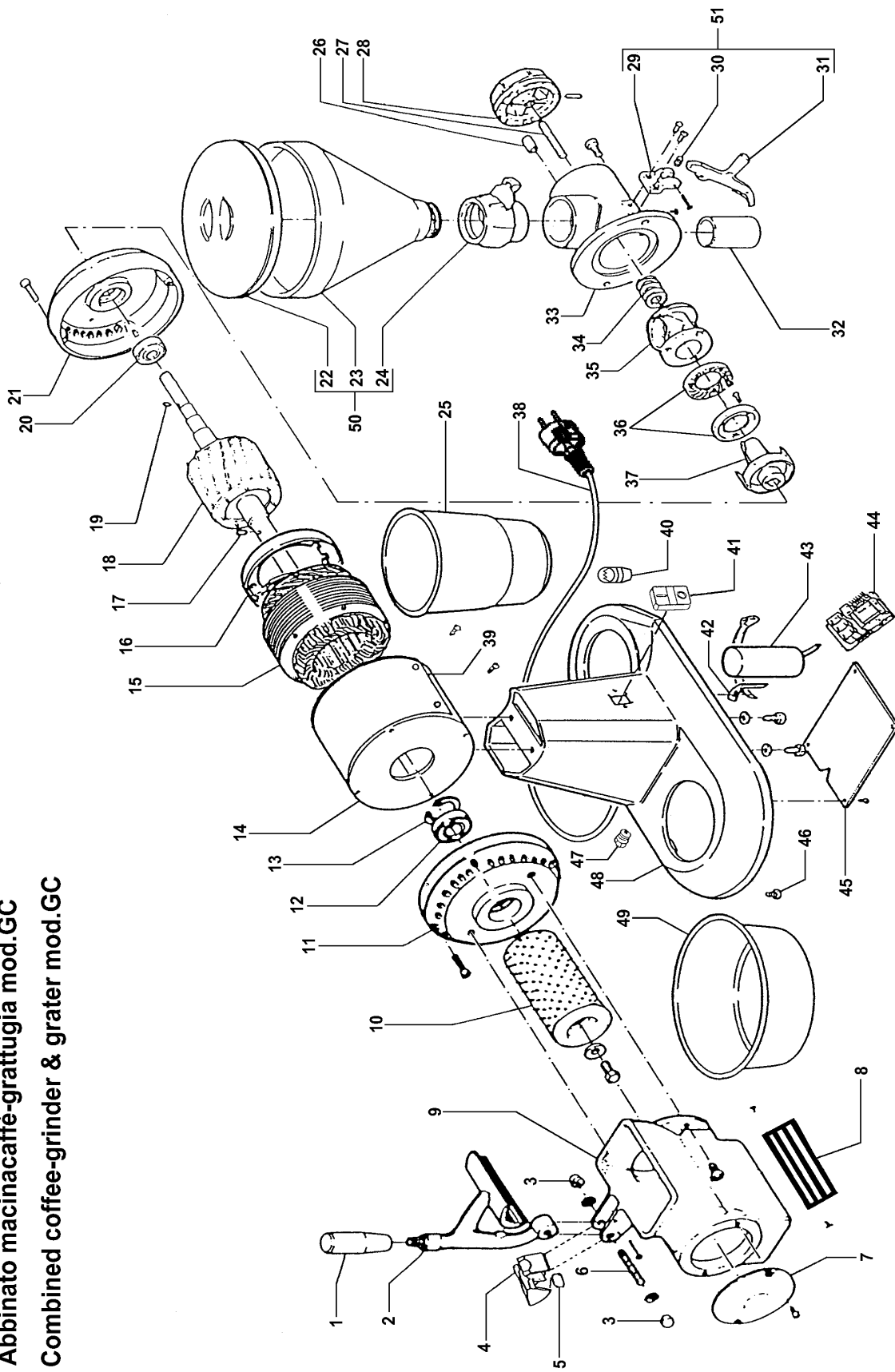


Abbinato macinacaffè-grattugia mod.GC
Combined coffee-grinder & grater mod.GC



ABBINATO MACINACAFFE'-GRATTUGIA MOD.GC COMBINED COFFEE-GRINDER & GRATER MOD.GC

RIF.	CODICE / CODE	DIN - UNI	DESCRIZIONE / DESCRIPTION
1	SL0106		Impugnatura / Grip
2	SL0201		Pressore / Pusher
2	SL0107	01/09/99 f.p.(*)	Pressore / Pusher
3	SL0108	M8	Dado / Nut
4	SL0882		Supporto / Support
5	SL0885		Microinterruttore / Microswitch
6	SL0258	M8x60	Prigioniero / Stud
7	SL0111		Coperchietto / Cover
8	SL1452		Griglia / Grid
9	SL0203		Bocca / Casing
9	SL0112	01/09/99 f.p.(*)	Bocca / Casing
10	SA5200		Rullo / Cylinder
11	SL0117		Calotta / Cap
12	SL0118	6205 ZZ	Cuscinetto / Bearing
13	SL0119	ø52	Seeger Interno / Spring Ring
14	SL0146		Carcassa / Housing
14	SL0123	01/09/00 f.p.(*)	Carcassa trifase / Triple-phase housing
15	SL0183	230-400V/3Ph/50Hz	Statore trifase / Triple-phase stator
15	SL0122	230V/1Ph/50Hz	Statore monofase / Single-phase stator
16	SL0189		Protezione / Guard
17	SL0121	ø5x10	Spina cilindrica / Pin
18	SA7700	230-400V/3Ph/50Hz	Rotore trifase / Triple-phase rotor
18	SA7800	230V/1Ph/50Hz	Rotore monofase / Single-phase rotor
19	SL0763	ø4x8	Spina cilindrica / Pin
20	SL0126	6203 ZZ	Cuscinetto / Bearing
21	SL0198		Calotta / Cap
22	SL0289		Coperchio / Cover
23	SL0288		Campana / Container
24	SL0287		Supporto / Support
25	SL0265		Recipiente / Container
26	SL0286		Oliatore / Oiler
27	SL0290		Prigioniero / Stud
28	SL0284		Pomello / Knob
29	SL0282		Supporto / Support
30	SL0281		Molla / Spring
31	SL0280		Grilletto / Trigger
32	SL0278		Tubo / Pipe
33	SL0276		Bocchettone / Sleeve
34	SL0275		Molla / Spring
35	SL0274		Bocchettone / Sleeve
36	SL0273		Coppia macine / Grinder couple
37	SL0272		Chiocciola / Screw shaft
38	SL1841	3Ph+Gnd	Cavo elettrico trifase / Electric cable (triple-phase)
38	SL1671	1Ph+N+Gnd	Cavo elettrico monofase / Electric cable (single-phase)
39	SL0181		Lista / Covering
40	SL1677	36V 2W	Lampadina (trifase) / Bulb (triple-phase)
40	SL1677	01/01/01 f.p.(*)	Lampadina (monofase) / Bulb (single-phase)
40	SL2256	24V 2W	Lampadina (monofase) / Bulb (single-phase)
41	SL0891		Pulsante / Push button
42	SL0176		Staffa / Bracket
43	SL0177	16µF	Condensatore / Condenser
44	SL0516	230-400V/3Ph/50Hz	Scheda elettronica trifase/ Triple-phase electronic card
44	SL0516	01/01/01 f.p.(*)	Scheda elettronica monofase / Single-phase electronic card
45	SL0556	230V/1Ph/50Hz	Scheda elettronica monofase / Single-phase electronic card
44	SL0883	01/07/98 f.p.(*)	Scheda elettronica / Electronic card
45	SL0264		Fondo / Bottom
46	SL0133		Tappo / Tap
47	SL1668	PG11	Pressacavo / Cable clamp
48	SL0267		Base / Base
49	SL0266		Recipiente / Container
50	SA5800		Gruppo campana / Container (assembly)
51	SA6000		Gruppo grilletto / Trigger (assembly)
////	SL1459	01/07/98 f.p.(*)	Freno motore / Motor brake
////	SL1460	01/07/98 f.p.(*)	Ventola freno motore / Motor brake fan
////	SL1461	01/07/98 f.p.(*)	Alimentatore freno motore / Motor brake feeder

(*): fuori produzione / out of production