

# CME250 SERVICE PARTS

This section contains the parts illustrations and parts lists for the CME250.

A "no number" designation, when found in the part number column, indicates the part in question is not available from Scotsman as an assembly. This designation is used only for clarity in making the list.

Beginning with 1994 production, the thermostatic expansion valve, the fan motor bracket and the condenser shroud were changed.

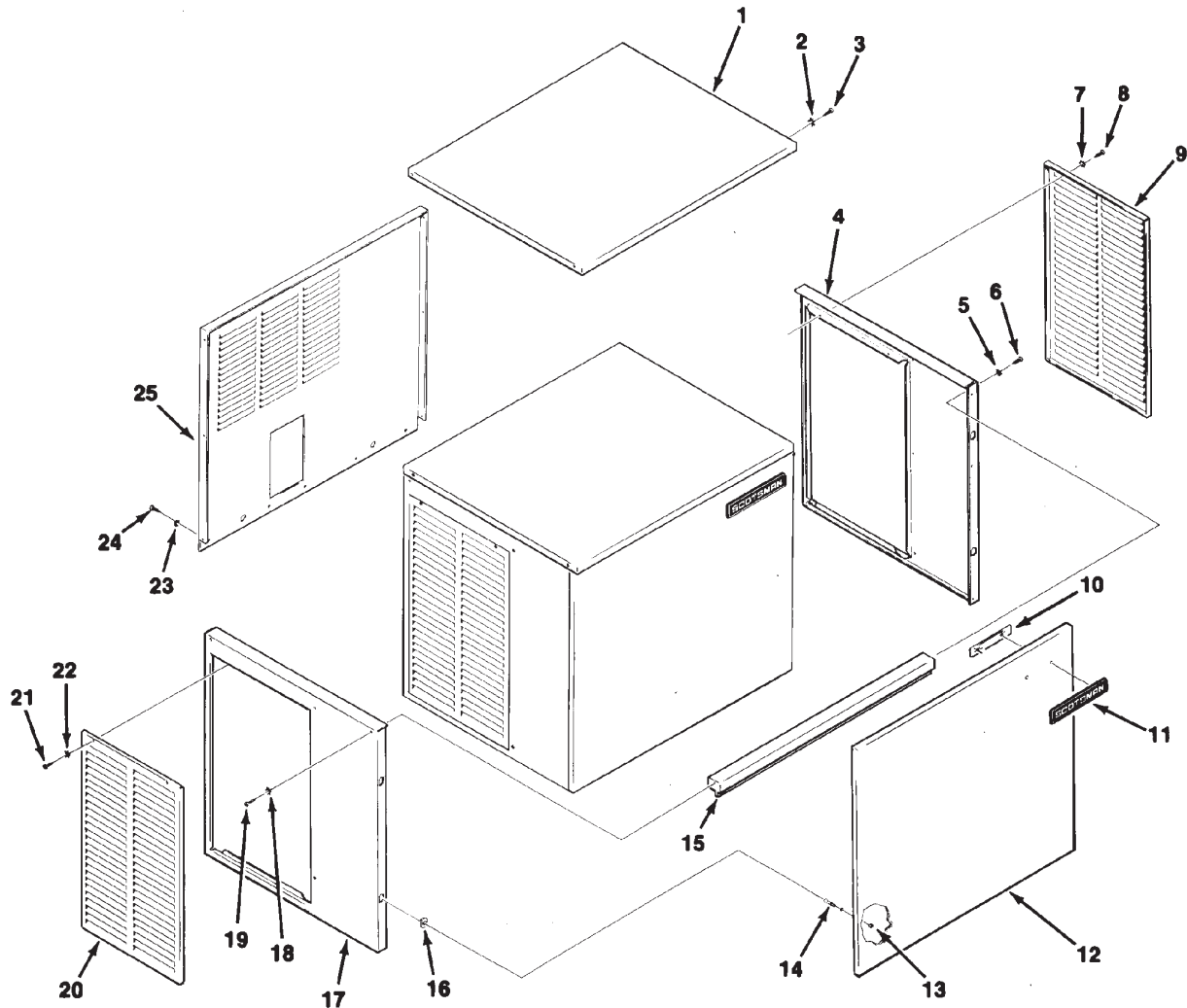
When ordering parts, to avoid costly delays and errors, check the complete description as shown in the list.

## TABLE OF CONTENTS

|                                      |   |
|--------------------------------------|---|
| Exterior Panels . . . . .            | 2 |
| Interior Panels . . . . .            | 3 |
| Air Cooled Refrigeration . . . . .   | 4 |
| Water Cooled Refrigeration . . . . . | 5 |
| Water System . . . . .               | 6 |
| Control Box . . . . .                | 7 |
| Wiring Diagrams . . . . .            | 8 |

# CME250 SERVICE PARTS

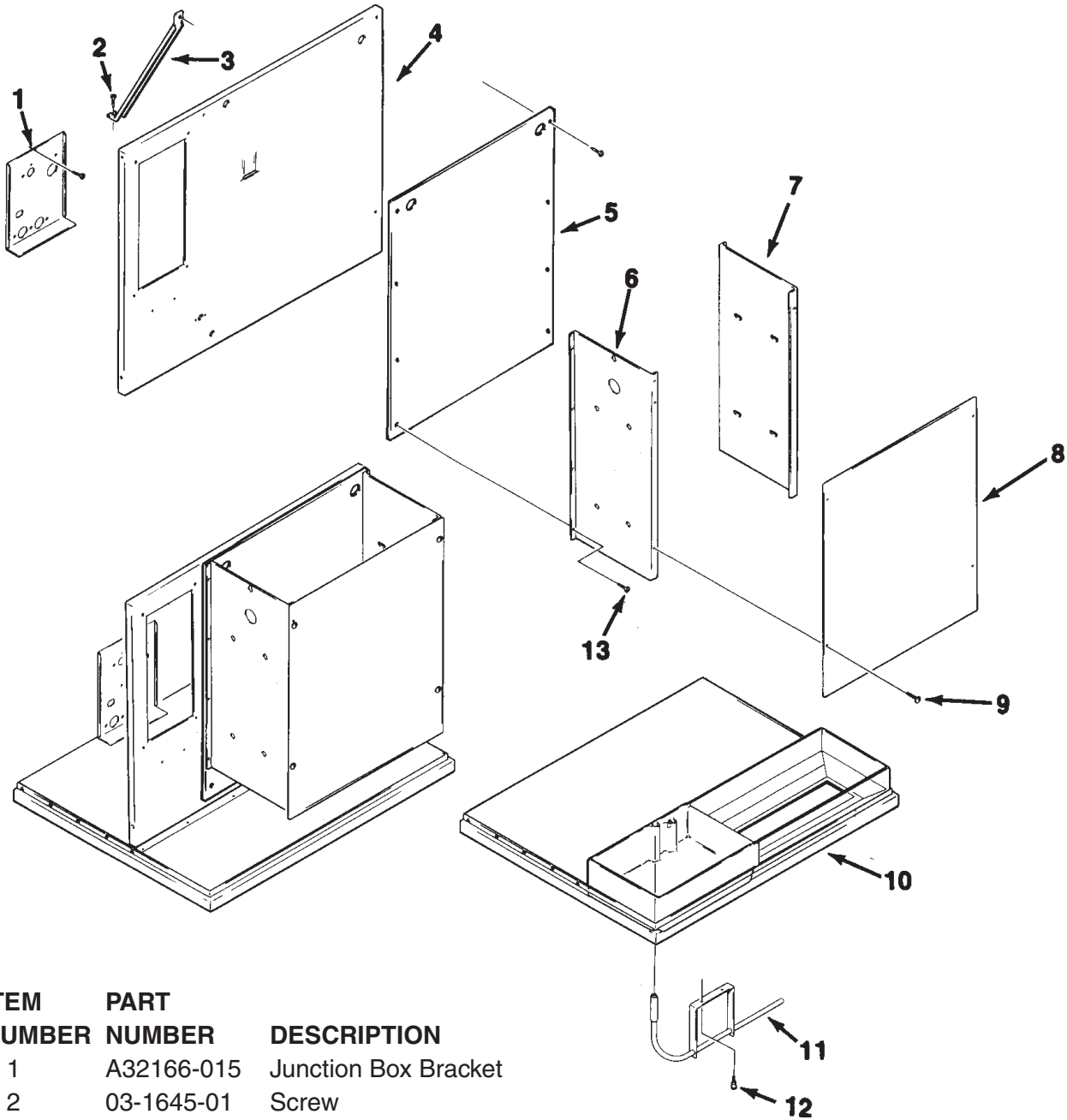
## CABINET ASSEMBLY



| ITEM NUMBER | PART NUMBER | DESCRIPTION            | ITEM NUMBER | PART NUMBER | DESCRIPTION               |
|-------------|-------------|------------------------|-------------|-------------|---------------------------|
| 1           | A32159-001  | Top Panel, Painted     | 13          | 03-1406-04  | Nut                       |
|             | A32159-002  | Top Panel, S. S.       | 14          | 15-0411-00  | Strike                    |
| 2           | 03-1417-27  | Lockwasher             | 15          | A32169-001  | Front Support             |
| 3           | 03-1531-01  | Screw                  | 16          | 02-0836-00  | Cabinet Catch             |
| 4           | A32162-001  | Right End Panel, Paint | 17          | A32163-001  | Left End Panel, Paint     |
|             | A32162-002  | Right End Panel, S.S.  |             | A32163-002  | Left End Panel, S.S.      |
| 5.          | 03-1417-03  | Lockwasher             | 18          | 03-1417-03  | Lockwasher                |
| 6           | 03-1531-01  | Screw                  | 19          | 03-1531-01  | Screw                     |
| 7           | 03-1417-03  | Lockwasher             | 20          | A32161-001  | Service Panel, sandalwood |
| 8           | 03-1404-12  | Screw                  |             | A33946-002  | Service Panel, gray       |
| 9           | A32161-001  | Service Panel, Painted | 21          | 03-1404-12  | Screw                     |
|             | A33946-002  | Service Panel, gray    | 22          | 03-1412-03  | Lockwasher                |
| 10          | 03-0271-00  | Speed Nut              | 23          | 03-1417-27  | Lockwasher                |
| 11          | 15-0711-01  | Emblem for painted     | 24          | 03-1531-01  | Screw                     |
|             | 15-0808-03  | Emblem for stainless   | 25          | A32202-003  | Back Panel, painted       |
| 12          | A32160-001  | Front Panel, Painted   |             | A32202-002  | Back panel, stainless     |
|             | A32160-002  | Front Panel, S.S.      |             |             |                           |

# CME250 SERVICE PARTS

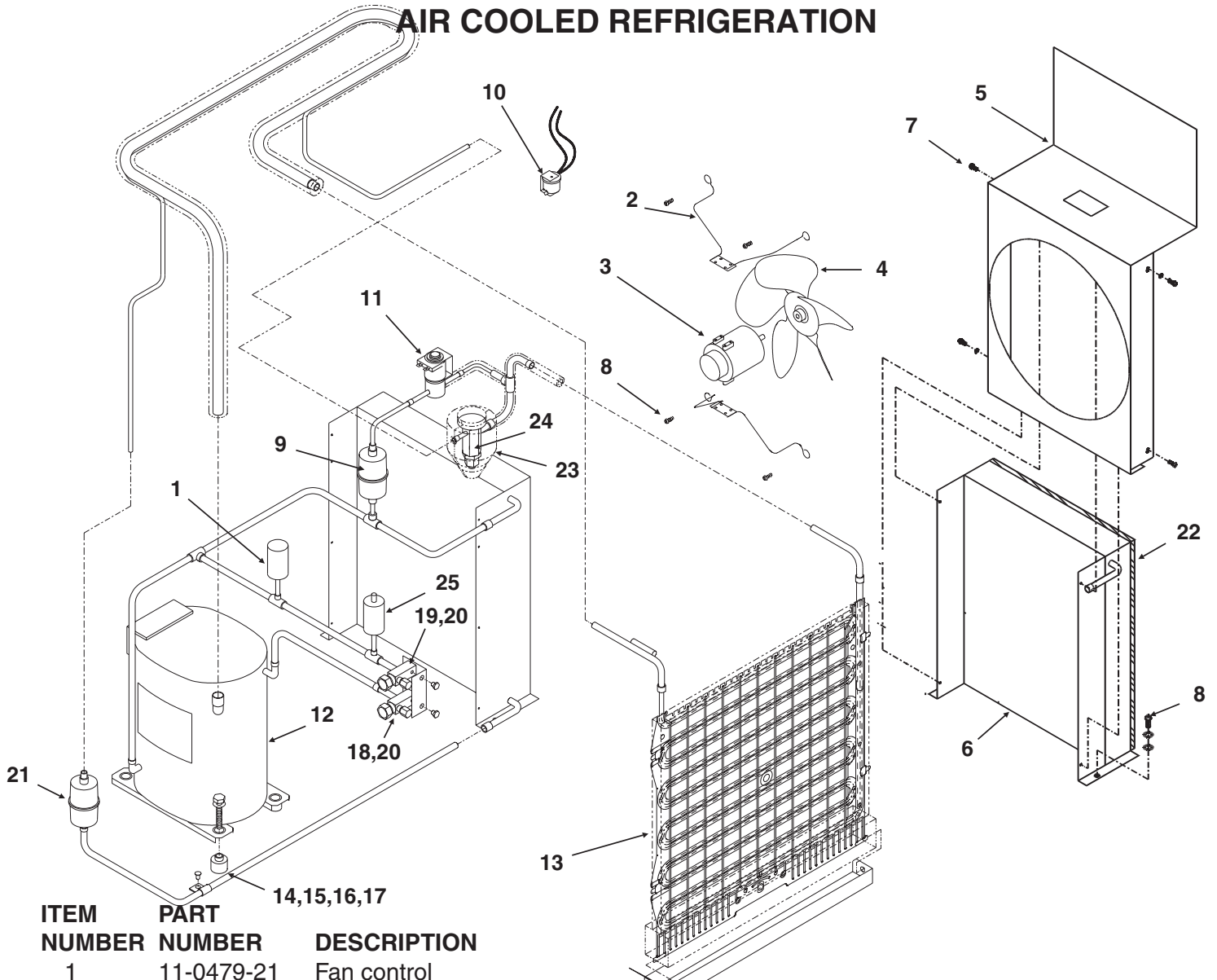
## CABINET INTERIOR



| ITEM NUMBER | PART NUMBER | DESCRIPTION               |
|-------------|-------------|---------------------------|
| 1           | A32166-015  | Junction Box Bracket      |
| 2           | 03-1645-01  | Screw                     |
| 3           | A32210-001  | Support Brace             |
| 4           | A35666-001  | Retainer                  |
| 5           | 02-2867-01  | Splash Panel              |
| 6           | A35671-001  | Evaporator Bracket, Left  |
| 7           | A32172-001  | Evaporator Bracket, Right |
| 8           | 02-3246-01  | Evaporator Plate Cover    |
| 9           | 03-0727-09  | Thumbscrew                |
| 10          | A32153-002  | Base                      |
| 11          | A32262-001  | Bin Thermostat Bracket    |
| 12          | 03-0727-09  | Thumbscrew                |
| 13          | 03-1531-02  | Screw                     |

# CME250 SERVICE PARTS

## AIR COOLED REFRIGERATION



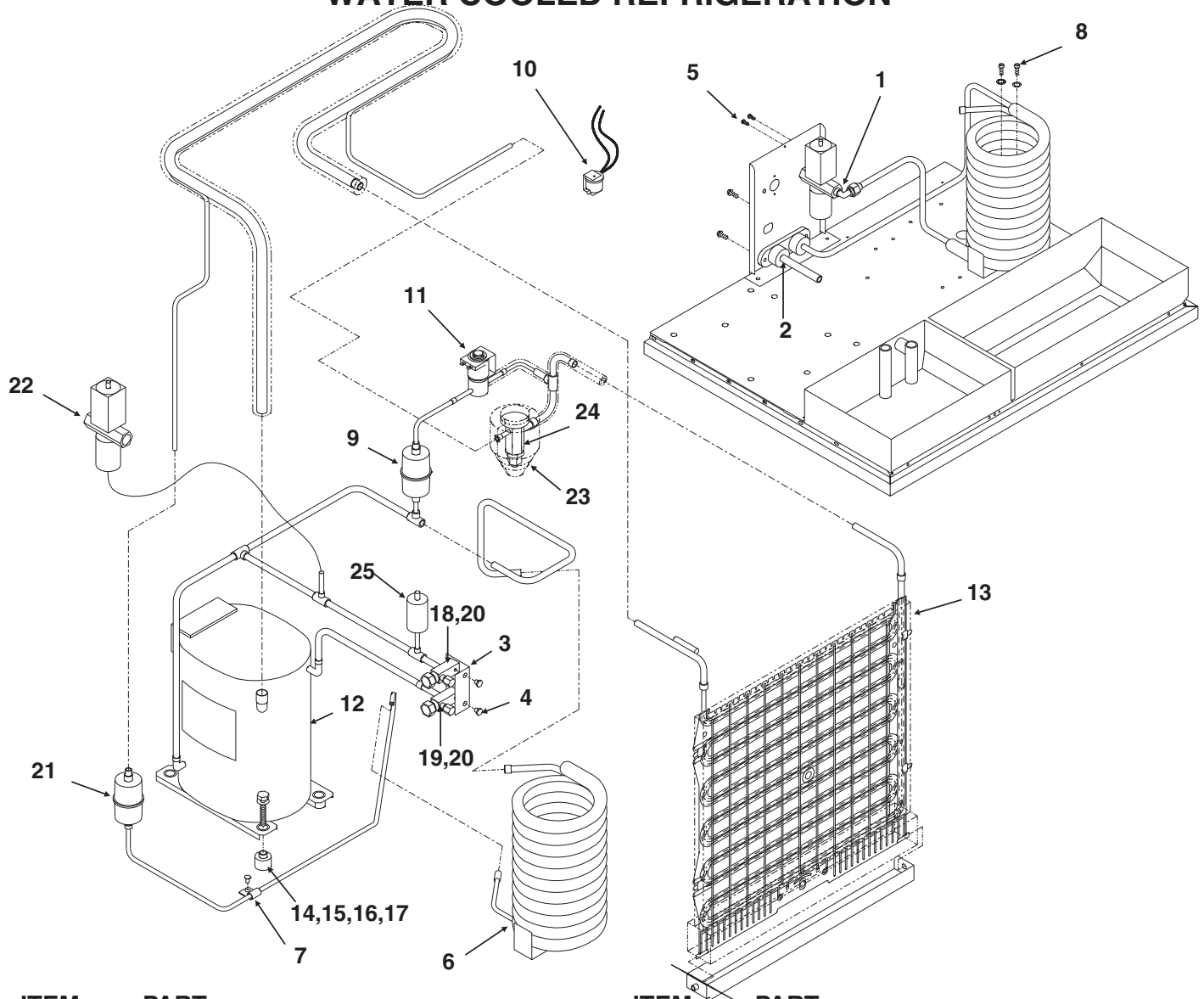
| ITEM NUMBER | PART NUMBER | DESCRIPTION                    |
|-------------|-------------|--------------------------------|
| 1           | 11-0479-21  | Fan control                    |
| 2           | 18-3739-01  | Fan Motor Bracket -12L only*   |
|             | 02-3333-01  | Fan Motor Bracket              |
| 3           | 18-5105-11  | Fan Motor                      |
| 4           | 18-3732-01  | Fan Blade                      |
| 5           | A32171-001  | Fan shroud-12L only*           |
|             | A35978-001  | Fan shroud                     |
| 5a          | A35979-001  | Fan shroud top                 |
| 6           | 18-0398-01  | Condenser                      |
| 7           | 03-1404-05  | Screw, #6 x 3/8                |
| 8           | 03-1645-01  | Screw, 1/4 - 20 x 1/2          |
|             | 03-1410-03  | Lockwasher                     |
|             | 03-1407-05  | Washer                         |
| 9           | 02-3231-01  | Hot gas valve filter-12L only* |
| 10          | 12-2300-03  | Hi Temp Cut Out                |
| 11          | 12-2417-22  | Hot Gas Valve                  |
| 12          | 18-8720-21  | Compressor, includes drier     |
|             | 18-5700-50  | Overload                       |

| ITEM NUMBER | PART NUMBER | DESCRIPTION                        |
|-------------|-------------|------------------------------------|
| 13          | A30296-020  | Evaporator                         |
| 14          | 18-2200-28  | Grommet                            |
| 15          | 18-2200-27  | Sleeve                             |
| 16          | 03-1407-07  | Washer                             |
| 17          | 03-1405-20  | Screw                              |
| 18          | 16-0832-20  | Lo side access valve (w/caps)      |
| 19          | 16-0832-21  | Hi side access valve (w/caps)      |
| 20          | 16-0832-02  | Stem cap                           |
|             | 16-0832-03  | Core cap                           |
| 21          | 02-3319-01  | Drier                              |
| 22          | A32975-001  | Foam Filter                        |
| 23          | A36067-001  | TXV insulation                     |
| 24          | 16-0866-21  | TXV - ext. equalized               |
|             |             | 12L units must add ext. equalizer. |
| 25          | 11-0485-21  | Hi Pressure Cut Out Switch         |

\*Only used on units with a serial number ending in -12L.

# CME250 SERVICE PARTS

## WATER COOLED REFRIGERATION

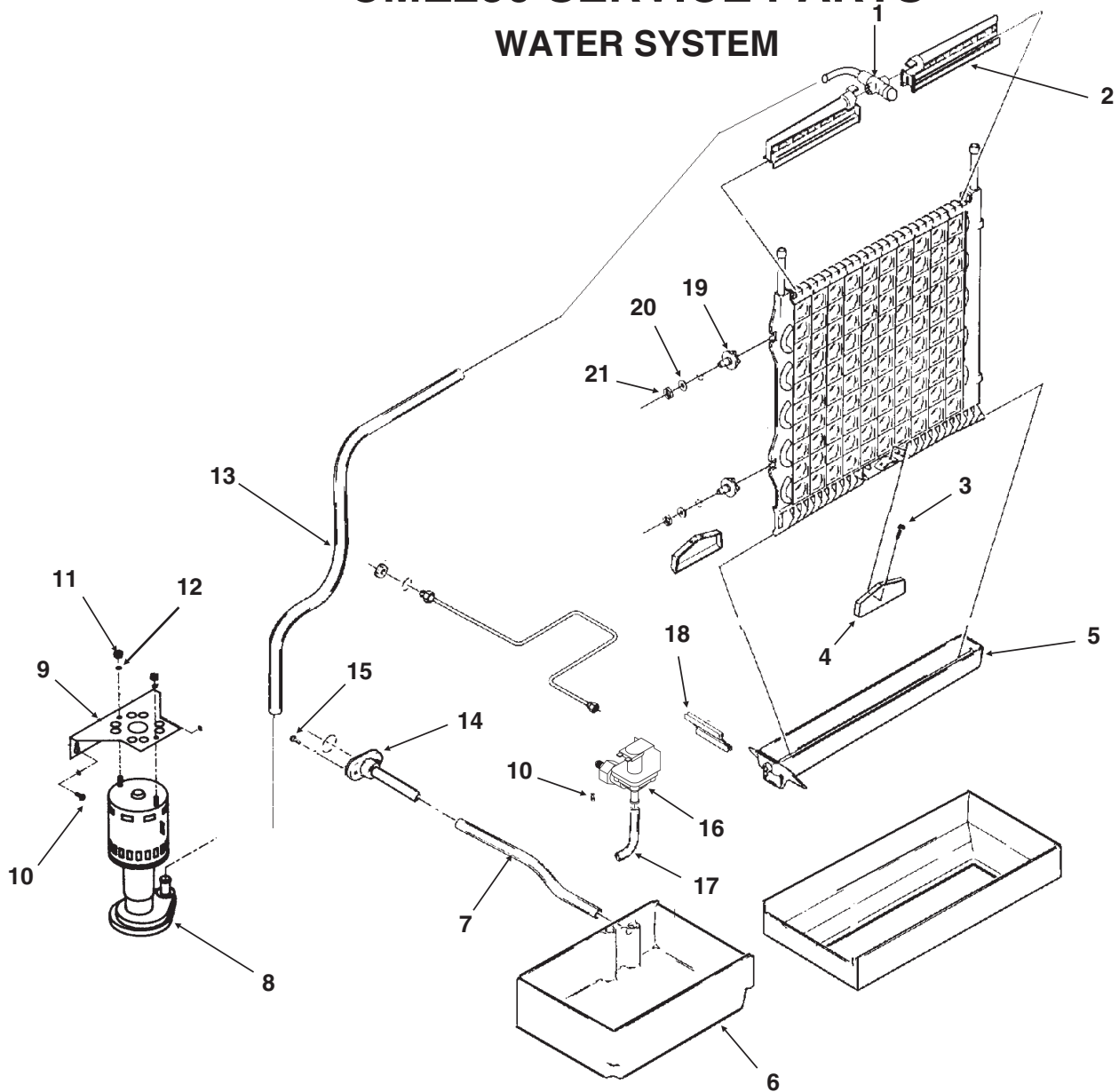


| ITEM NUMBER | PART NUMBER | DESCRIPTION                     | ITEM NUMBER | PART NUMBER | DESCRIPTION                        |
|-------------|-------------|---------------------------------|-------------|-------------|------------------------------------|
| 1           | 16-0401-00  | Brass elbow                     | 13          | A30296-020  | Evaporator                         |
| 2           | A32244-001  | Drain assembly                  | 14          | 18-2200-28  | Grommet                            |
| 3           | A35588-001  | Bracket for valves              | 15          | 18-2200-27  | Sleeve                             |
| 4           | 03-0571-02  | Screw                           | 16          | 03-1407-07  | Washer                             |
| 5           | 03-1403-14  | Screw                           | 17          | 03-1405-20  | Screw                              |
| 6           | 18-3306-25  | Condenser                       | 18          | 16-0832-20  | Lo side access valve (w/caps)      |
| 7           | 03-1682-02  | Clamp                           | 19          | 16-0832-21  | Hi side access valve (w/caps)      |
| 8           | 03-1645-01  | Screw, 1/4 - 20 x 1/2           | 20          | 16-0832-02  | Stem cap                           |
|             | 03-1417-08  | Lockwasher                      |             | 16-0832-03  | Core cap                           |
| 9           | 02-3231-01  | Hot gas valve filter -12L only* | 21          | 02-3319-01  | Drier                              |
| 10          | 12-2300-03  | Hi Temp Cut Out                 | 22          | 11-0478-01  | Water regulating valve             |
| 11          | 12-2417-22  | Hot Gas Valve                   | 23          | A36067-001  | TXV insulation                     |
| 12          | 18-8720-21  | Compressor, includes drier      | 24          | 16-0866-21  | TXV - ext. equalized               |
|             | 18-5700-50  | Overload                        |             |             | 12L units must add ext. equalizer. |
|             |             |                                 | 25          | 11-0486-21  | Hi Pressure Cut Out Switch         |

\* Only used on units with a serial number ending in -12L.

# CME250 SERVICE PARTS

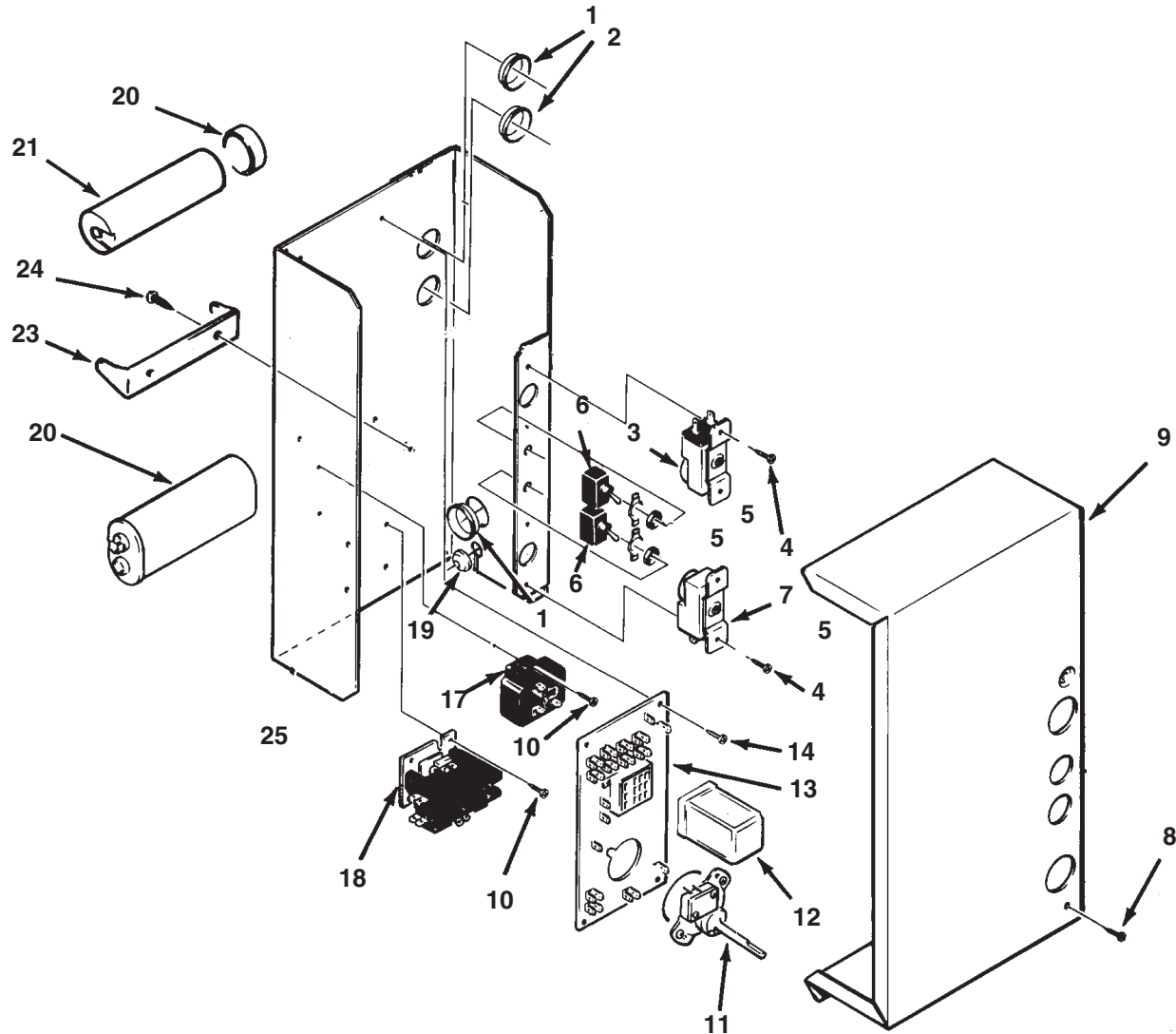
## WATER SYSTEM



| ITEM NUMBER | PART NUMBER | DESCRIPTION               | ITEM NUMBER | PART NUMBER | DESCRIPTION        |
|-------------|-------------|---------------------------|-------------|-------------|--------------------|
| 1           | A30926-001  | Manifold w/ "T" & "elbow" | 13          | 13-0674-07  | Pump hose, 33"     |
| 2           | 02-2527-01  | Water distributor tube    | 14          | A32282-003  | Drain assembly, AC |
| 3           | 03-1531-01  | Screw                     | 15          | 03-1645-01  | Screw              |
| 4           | 02-2878-02  | End cover                 | 16          | 12-2447-21  | Inlet water valve  |
| 5           | 02-2868-01  | Drain trough              | 17          | A35926-001  | Water inlet tube   |
| 6           | 02-2869-01  | Reservoir                 | 18          | 02-2875-01  | Deflector          |
| 7           | 13-0674-07  | Drain hose, 8"            | 19          | 02-2642-01  | Plate mount        |
| 8           | 12-2260-21  | Water pump                | 20          | 03-1408-34  | Washer             |
| 9           | A35554-001  | Pump bracket              | 21          | 03-1394-03  | Pal nut            |
| 10          | 03-1531-01  | Screw                     |             |             |                    |
| 11          | 03-1406-05  | Nut                       |             |             |                    |
| 12          | 03-1417-06  | Lockwasher                |             |             |                    |

# CME250 SERVICE PARTS

## CONTROL BOX

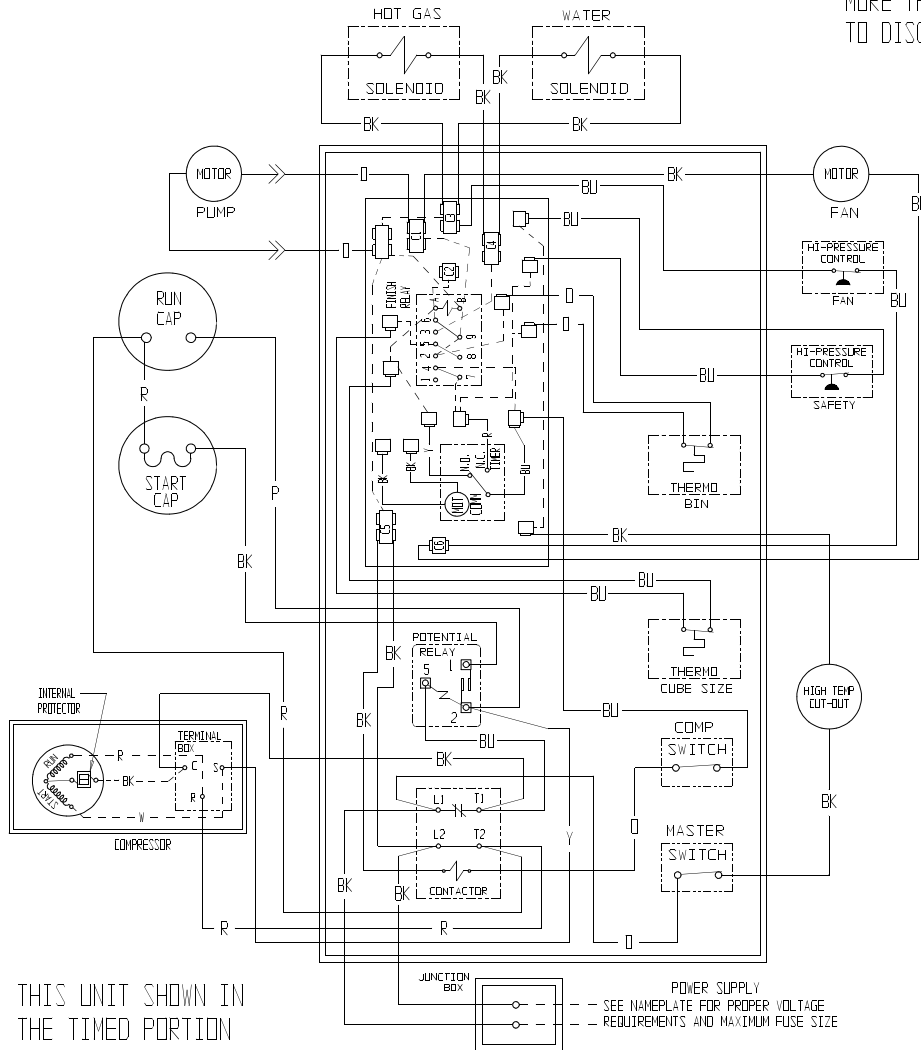


| ITEM NUMBER | PART NUMBER | DESCRIPTION          | ITEM NUMBER | PART NUMBER | DESCRIPTION                 |
|-------------|-------------|----------------------|-------------|-------------|-----------------------------|
| 1           | 12-1213-17  | Snap bushing         | 14          | 03-1403-02  | Screw                       |
| 2           | 12-1213-10  | Snap bushing         | 15          | 03-1403-05  | Screw                       |
| 3           | 11-0436-21  | Cube size thermostat | 16          | 03-1417-03  | Lockwasher                  |
| 4           | 03-1403-17  | Screw                | 17          | 18-1903-44  | Potential relay             |
| 5           | 03-1417-27  | Lockwasher           | 18          | 12-2469-03  | Contactor                   |
| 6           | 12-0426-01  | Toggle switch        | 19          | 12-1213-04  | Snap bushing                |
| 7           | 11-0427-22  | Bin thermostat       | 20          | 18-1902-52  | Run capacitor               |
| 8           | 03-1531-01  | Screw                |             | 13-0666-00  | Cap for run capacitor       |
| 9           | A32168-001  | Control Box Cover    |             | A32872-001  | Clamp for run capacitor     |
| 10          | 03-1638-03  | Screw                | 21          | 18-1901-49  | Start capacitor             |
| 11          | 12-2317-21  | Timer & Switch       | 22          | 18-2200-38  | Cap for start capacitor     |
| 12          | 12-1879-02  | Relay, 115 V         | 23          | 18-2200-39  | Bracket for start capacitor |
| 13          | 12-1912-01  | Circuit Board        | 24          | 03-1418-06  | Screw                       |
|             |             |                      | 25          | 03-1406-06  | #10 Hex nut                 |

# CME250 SERVICE PARTS AIR COOLED WIRING DIAGRAM

A35661-032

CAUTION:  
MORE THAN ONE DISCONNECT MEANS MAY BE REQUIRED  
TO DISCONNECT ALL POWER TO THIS UNIT

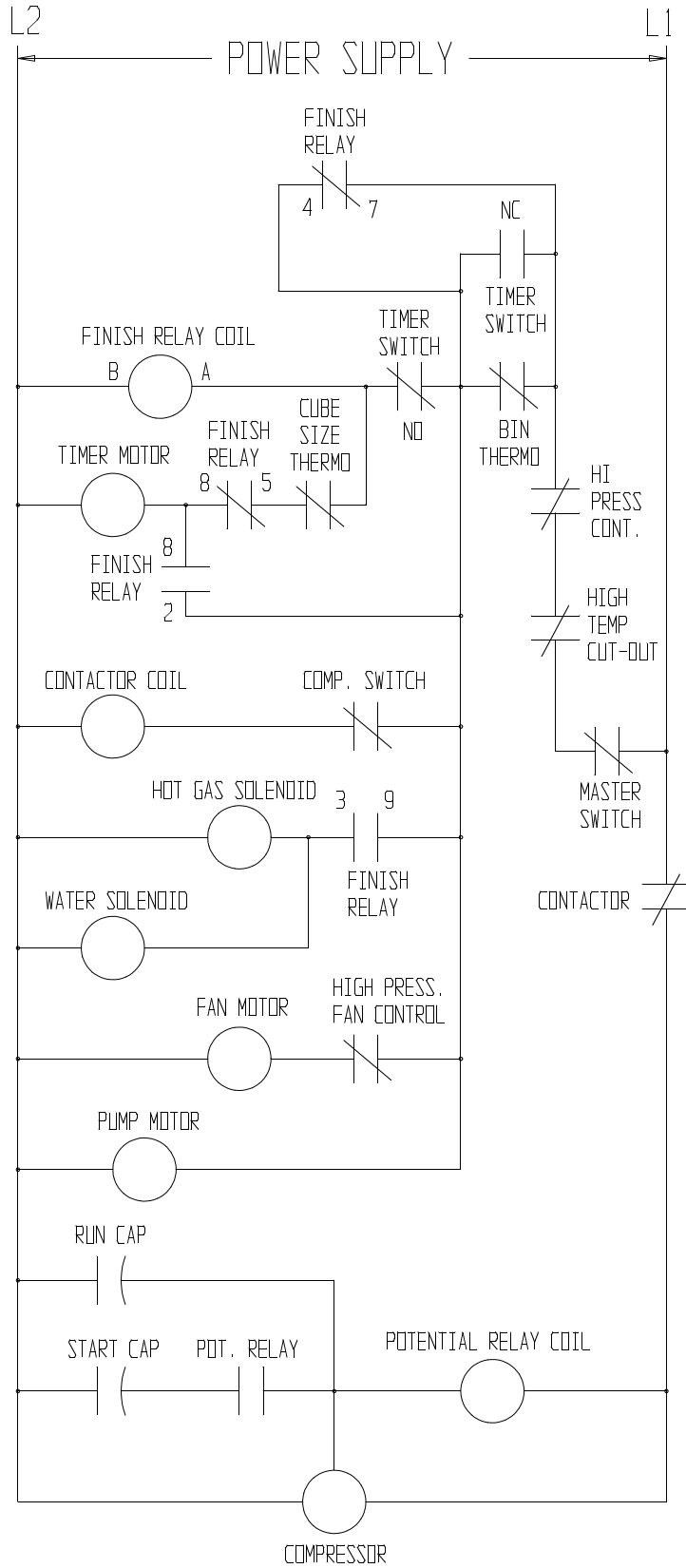


THIS UNIT SHOWN IN  
THE TIMED PORTION  
OF THE FREEZING CYCLE

USE COPPER CONDUCTORS ONLY



# CME250 SERVICE PARTS AIR COOLED SCHEMATIC DIAGRAM

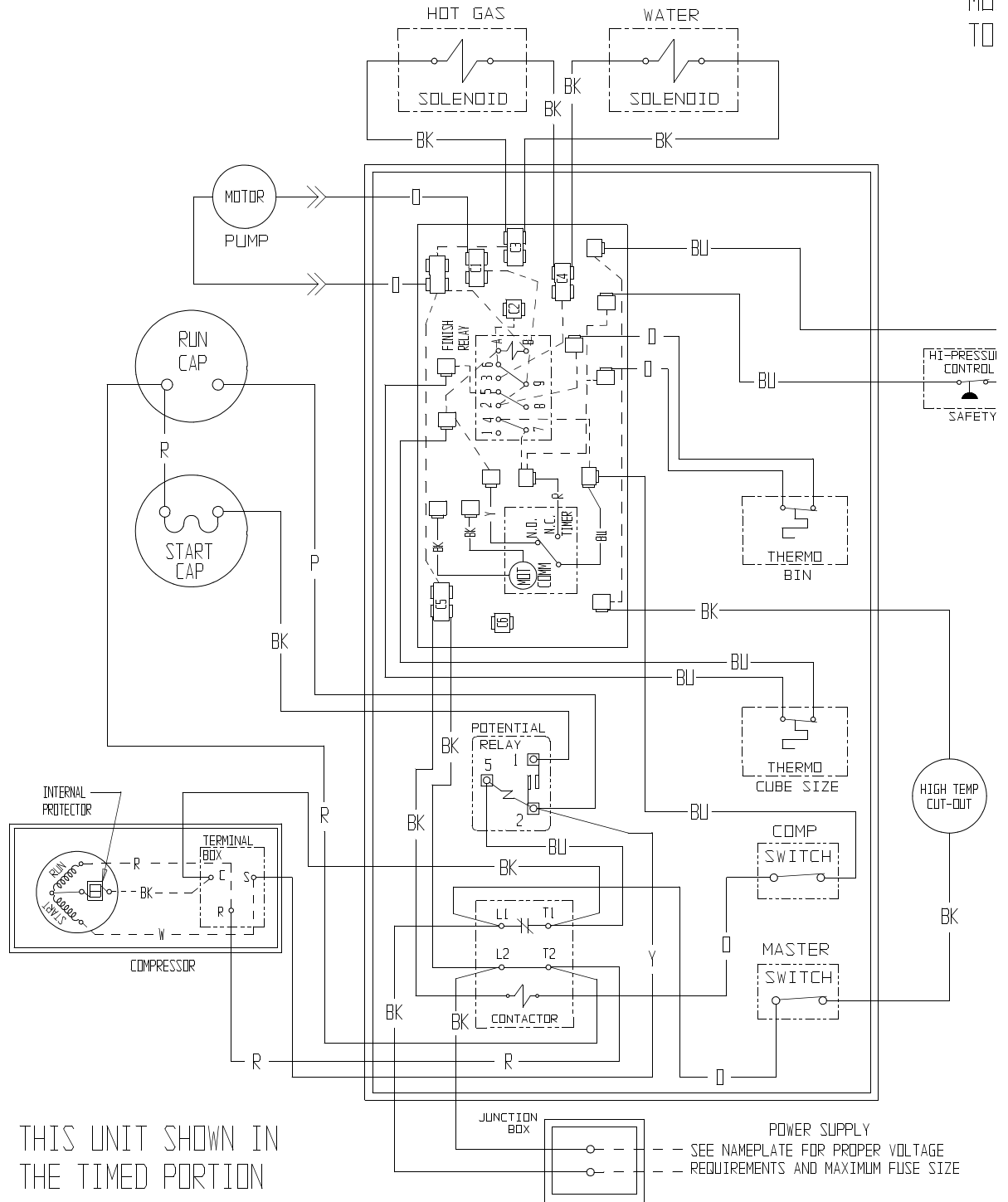


THIS UNIT MUST BE GROUNDED

# CME250 SERVICE PARTS WATER COOLED WIRING DIAGRAM

A35662-032

CA  
MO  
TO

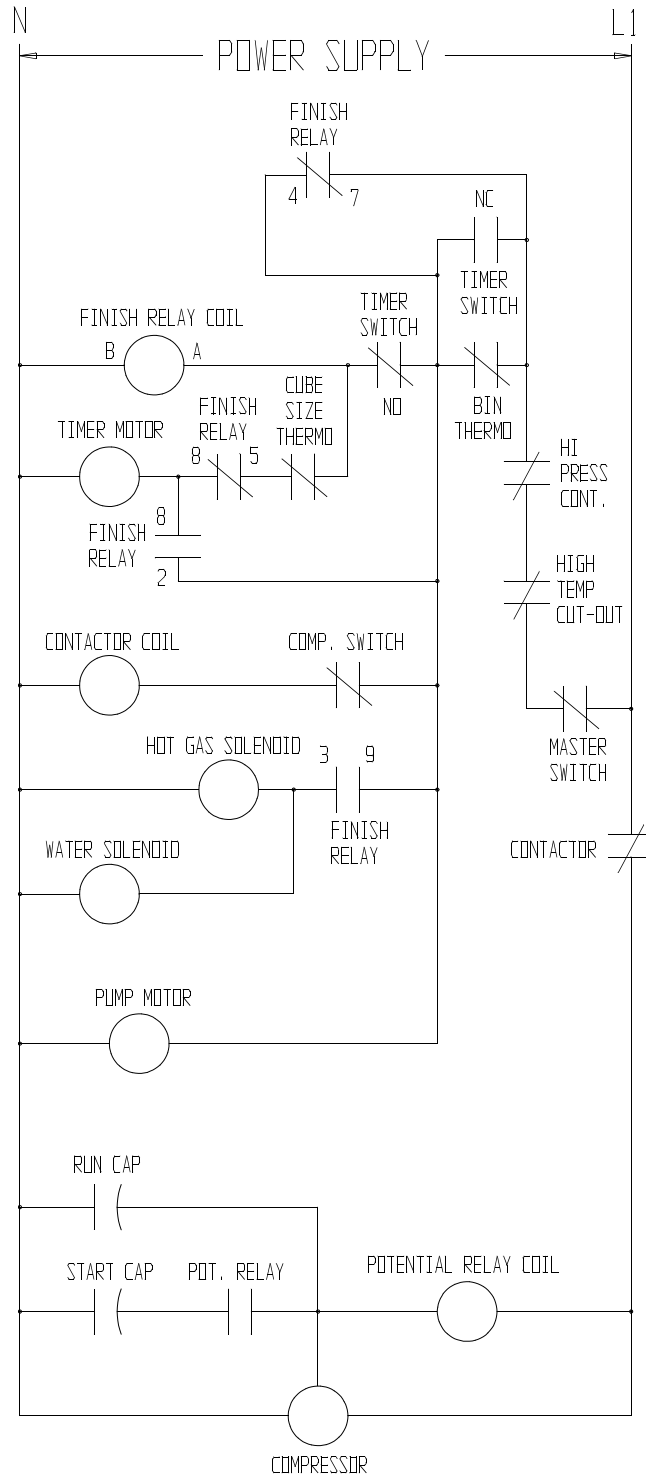


THIS UNIT SHOWN IN  
THE TIMED PORTION  
OF THE FREEZING CYCLE

USE COPPER CONDUCTORS ONLY

# CME250 SERVICE PARTS WATER COOLED SCHEMATIC DIAGRAM

CAUTION:  
MORE THAN ONE DISCONNECT MEANS MAY BE REQUIRED  
TO DISCONNECT ALL POWER TO THIS UNIT



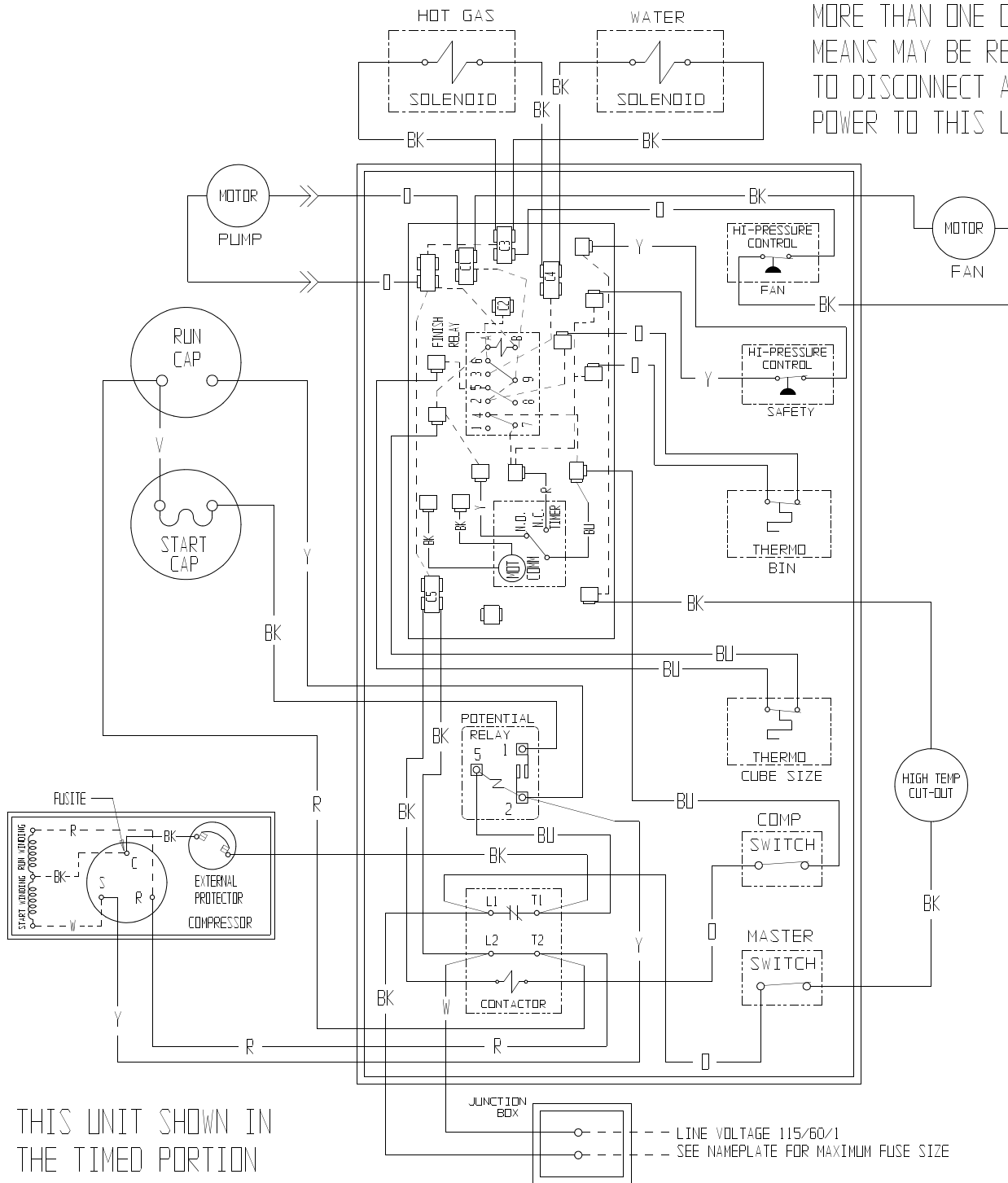
THIS UNIT MUST BE GROUNDED

# CME250 SERVICE PARTS

## "E" Series Air Cooled Wiring Diagram

A35536-001

CAUTION:  
MORE THAN ONE DISCONNECT  
MEANS MAY BE REQUIRED  
TO DISCONNECT ALL  
POWER TO THIS UNIT



THIS UNIT SHOWN IN  
THE TIMED PORTION  
OF THE FREEZING CYCLE

USE COPPER CONDUCTORS ONLY

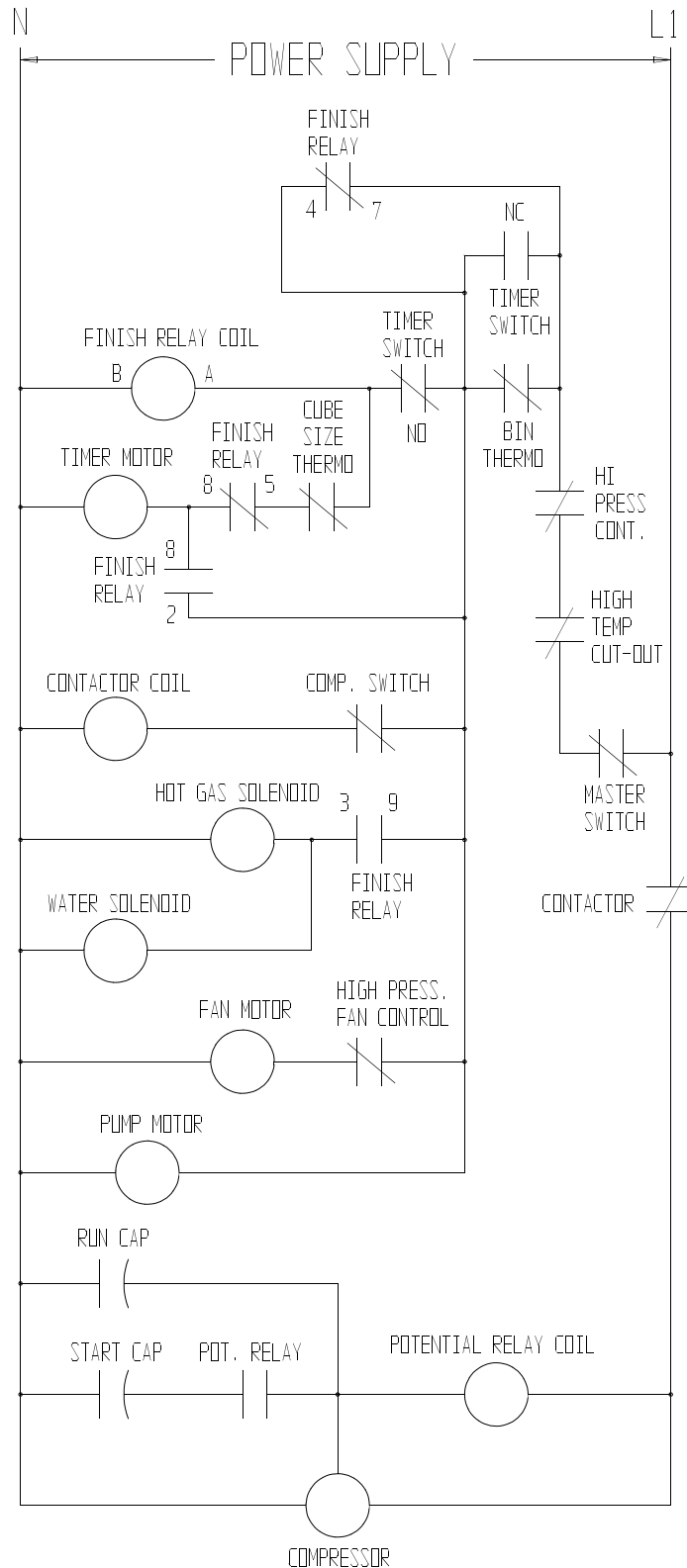
THIS UNIT MUST BE GROUNDING

# CME250 SERVICE PARTS

## "E" Series Air Cooled Wiring Diagram

CAUTION:

MORE THAN ONE DISCONNECT MEANS MAY BE REQUIRED TO DISCONNECT ALL POWER TO THIS UNIT

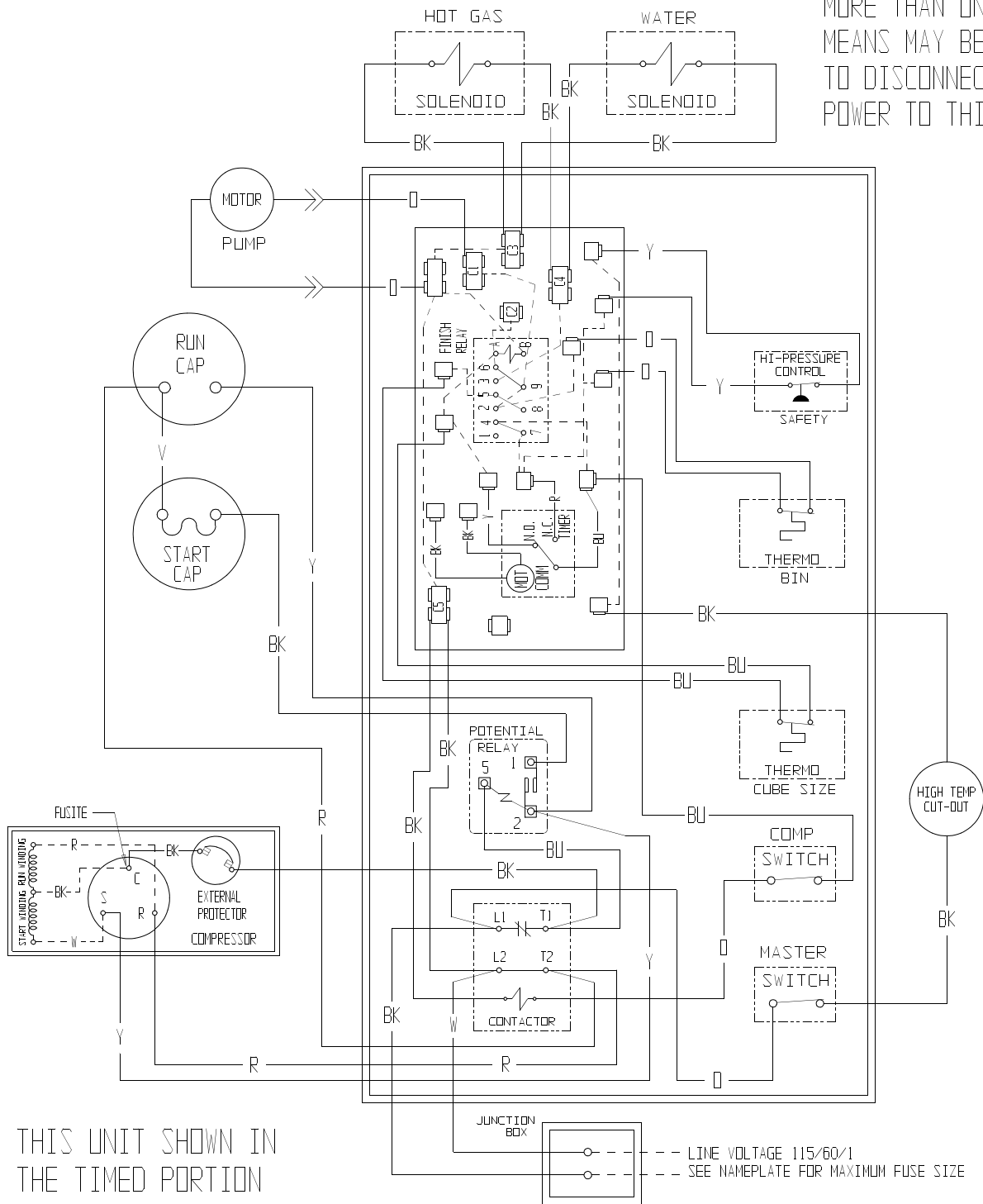


# CME250 SERVICE PARTS

## "E" Series Water Cooled Wiring Diagram

A35537-001

CAUTION:  
MORE THAN ONE DISCONNECT  
MEANS MAY BE REQUIRED  
TO DISCONNECT ALL  
POWER TO THIS UNIT



# CME250 SERVICE PARTS

## "E" Series Water Cooled Wiring Diagram

CAUTION:

MORE THAN ONE DISCONNECT MEANS MAY BE REQUIRED TO DISCONNECT ALL POWER TO THIS UNIT

