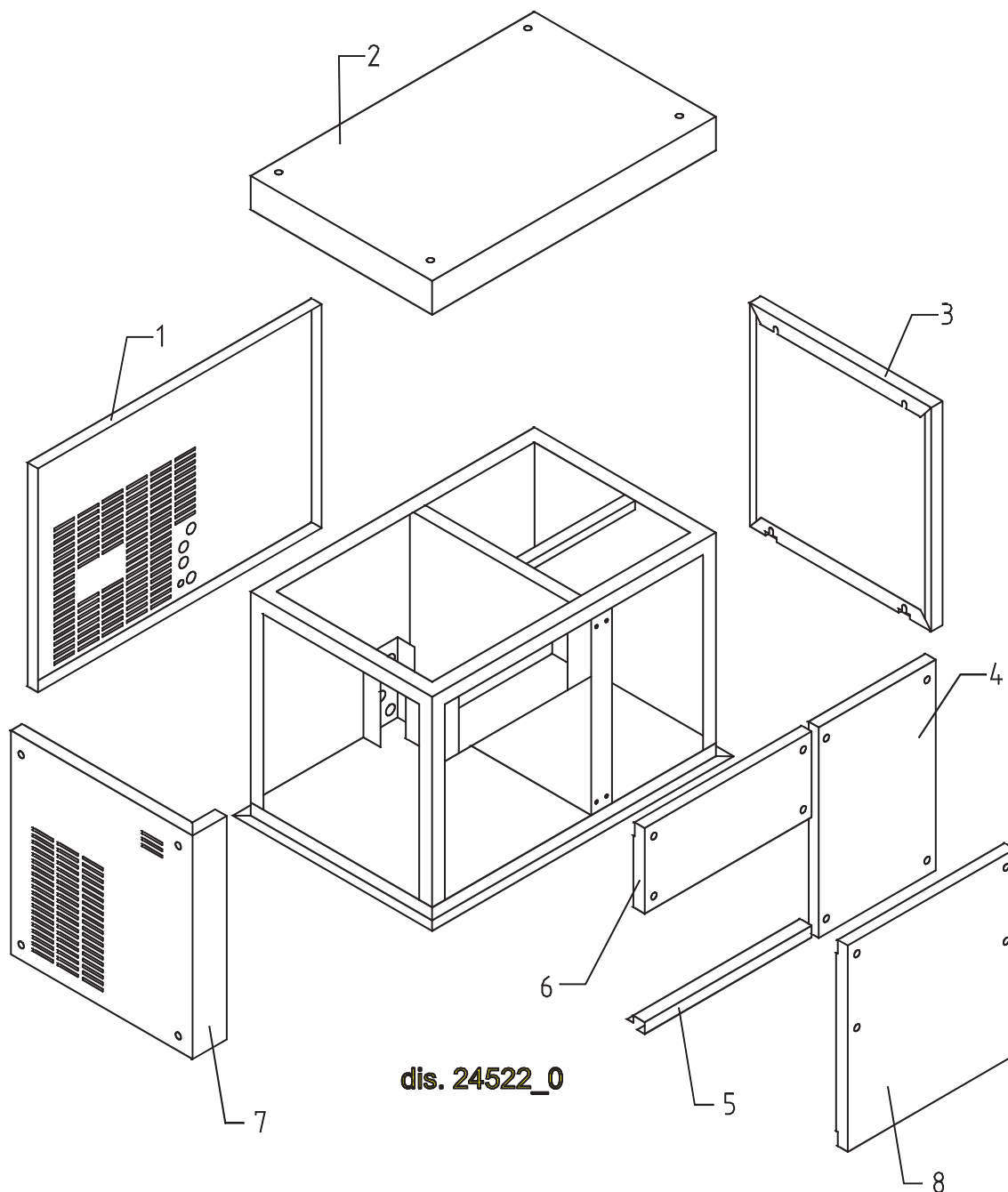


Shell assembly Mod. MUSTER 800



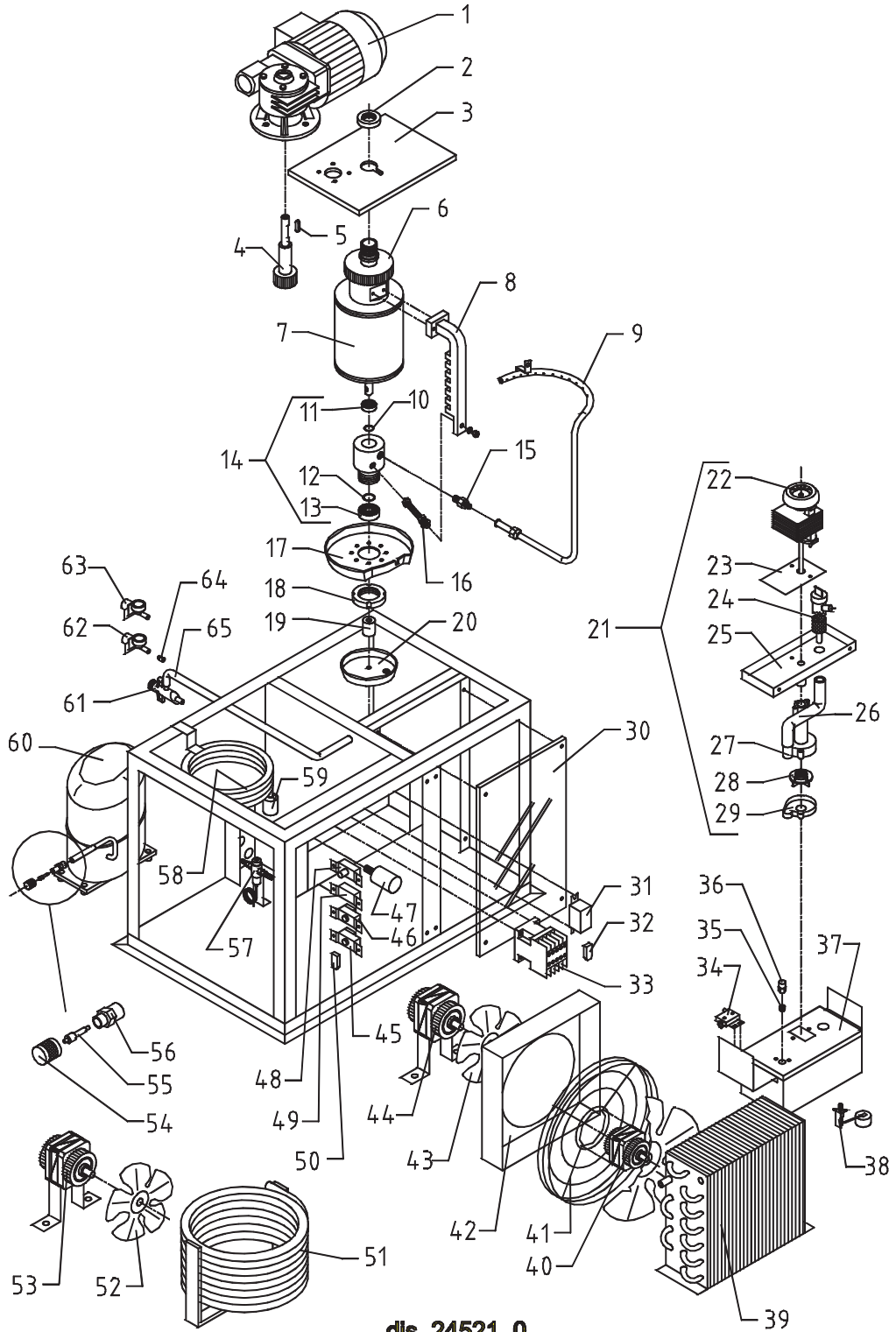
dis. 24522_0

Shell assembly Mod. MUSTER 800 (TAB. 75)

Ref.	Description	Refrigerant	A/W	Tension	Code
1	Back panel				22450
2	Top assy				C22449
3	Right side				22445
4	Front panel assy (evaporator side)				C22448B
5	Frontal template		*		22446
6	Electrical box cover panel		*		22486
7	Left side				22444
8	Front panel		W		22599

Note: *.It is valid only for model A-W and not for models only W

Cooling system assembly Mod. MUSTER 350-800



dls. 24521_0

Cooling system assembly Mod. MUSTER 800 (TAB. 79)

Ref.	Description	Refrigerant	A/W	Tension	Code
1	Motor + reduction gear assy			4-5	C23412
1	Motor + reduction gear assy			6-7	C23389
2	Cylinder ring nut				20365
3	Evaporator support plate				20372
4	Pinion with shaft for gearmotor				20344
5	Key 6x6x40				20350
6	Crown gear				20363
7	Evaporator				C11063
8	Knife				E20358
9	Spray ring				C20357
10	Silicone OR 4081 ring				20338
11	Inox bearing				20045
12	Silicone OR 4081 ring				20338
13	Inox bearing				20045
14	Complete rotary ring				C10193
15	Joint				20367
16	M10 tie rod (to block knife)				20369
17	Rotary basin				10191
18	Ring nut for rotary ring				10194
19	Spacer				20366
20	Fixed basin				C10192
21	Pump and filter assy			4-5	C26711
21	Pump and filter assy			6-7	C26713
22	Pump motor			4-5	23073
22	Pump motor			6-7	23187
23	Heat dissipator				22430
24	Filtering element				20254
25	Pump motor holder				10161
26	Pump-filter fitting pipe				13084
27	Pump body				10065
28	Pump impeller				10138
29	Diffuser				10067
30	Screen evaporator chamber				10196
31	Relay				23190
32	Anti radio interference filter			4-5	23458
33	Contactora				23398
34	Microswitch for overflow ice				23373
35	Bush				20405
36	Nut				20404
37	Water-pump basin				C22443
38	Floating valve				10188
39	Air condenser		*		20396
40	Fan motor		*	4-5	23468
40	Fan motor		*	6-7	23467
41	Fan motor grid		*	4-5	12053
41	Fan motor grid		*	6-7	12052
45	Bin thermostat				23421
46	Safety thermostat				23447
47	Condenser 5µf		*		23469
48	Pressure switch (maximum pressure)				23342
49	Condenser pressure switch		*		23175
50	Anti radio interference filter		*	4-5	23459
51	Water condenser		W		14285

54	Vacuum-charge valve plug				14006
55	Vacuum-charge valve device				14005
56	Vacuum- charge valve body				14007
57	Pressure valve				20149
58	Water condenser		*		14034
59	Solid core drier				14255
60	Compressor			4-6	23517
60	Compressor			5-7	23518
61	Discharges manifold				C10053
62	1 way inlet water nipple		*		10239
63	1 way inlet water nipple				10239
64	Flow control lt.2,0 for inlet water connector		*		10077
65	Overflow pipe				13088

4.Note: 1. Code 23412 (Tens.4-5) until number 61910. Code C23412 (Tens.4-5) from number 61911. Code 23389 (Tens.6-7) until number 61910. Code C23389 (Tens.6-7) from number 61911.

4. Code 20344 from number 47869.

Pinion gear (Code 20344) is an only part and it can be changed with previous version formed by pinion, shaft and safety pin, but only if the gearmotor has the safety klikson.

7.The Evaporator Assembly (Code C11063) includes also the items at the position no. 2,8,10-12,11-13,14,16,19.

*.It is valid only for models A-W and not for models only W