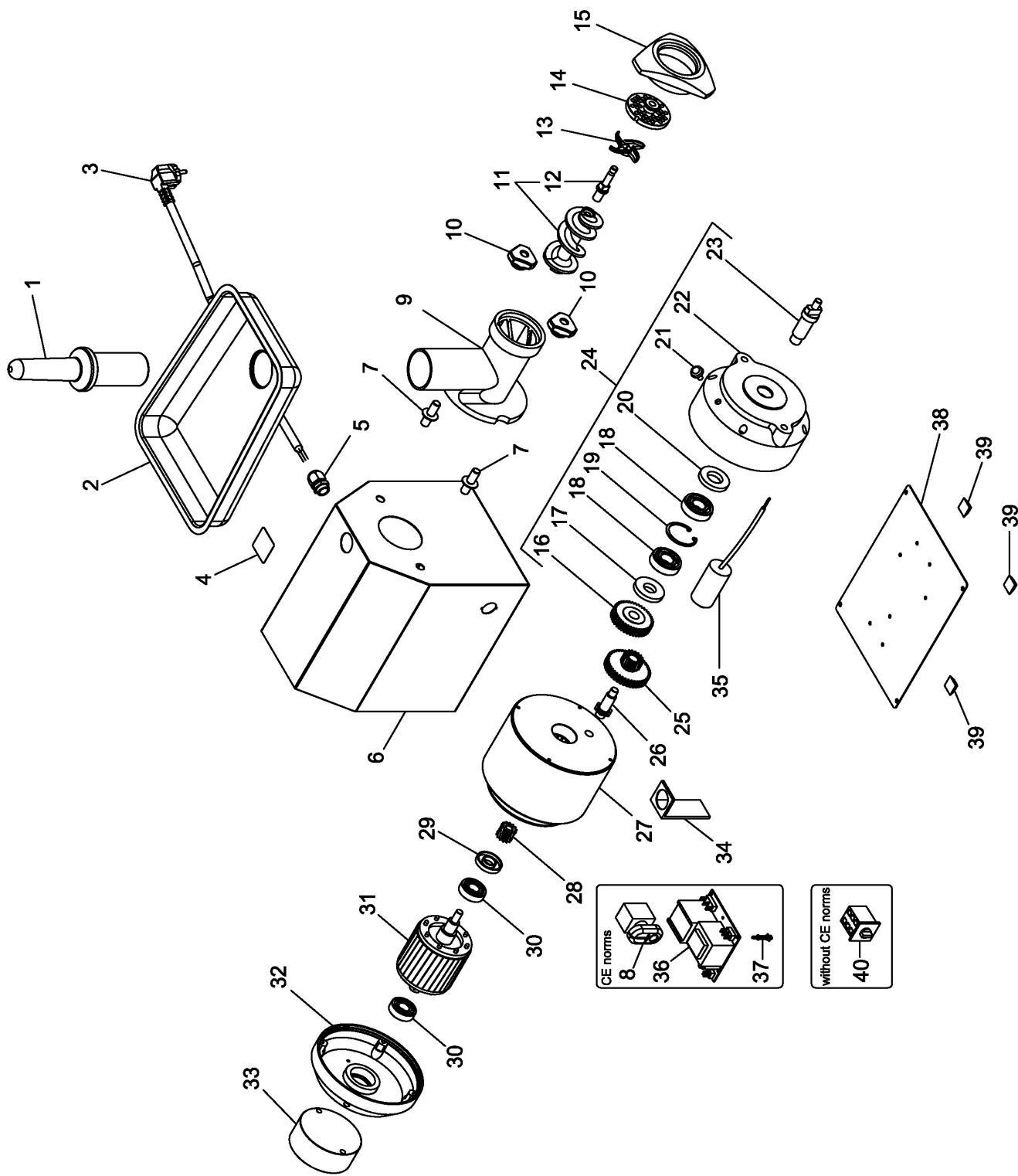


TR12CQ0



TR12CQ0

Pos. Ref.	Codice Code	Caratteristiche Features	Descrizione Description
1	SL0134	●	Pestello Pusher
2	SL0135		Tramoggia Hopper
3	SL1841	3Ph+Gnd	Cavo elettrico Electric cable
3	SL1671	1Ph+N+Gnd	Cavo elettrico Electric cable
4	SL3104	●	Etichetta Label
5	SL1668	PG11	Pressacavo Cable clamp
6	SL3041		Carcassa Housing
7	SL3102		Perno Pivot
8	SL0891	● Start-stop	Pulsante Push button
9	SL3981	Stainless-steel	Bocchettone Sleeve
9	SL2553R0	Food stuff treated cast-iron (without CE norms)	Bocchettone Sleeve
9	SL3982	Unger	Bocchettone Sleeve
10	SL2924	●	Pomello Knob
11	SA5300	● Stainless-steel	Elica Screw shaft
11	SA5350	Food stuff treated cast-iron (without CE norms)	Elica Screw shaft
11	SA2600	Unger	Elica Screw shaft
12	SL2521		Perno Pivot
12	SL2561	Unger	Perno Pivot
13	///////	●	Coltello Cutter
14	///////	●	Piastra Plate
15	SL0171	Stainless-steel	Volantino Handwheel
15	SL3327R0	Aluminium (without CE norms)	Volantino Handwheel
16	SL0130		Ingranaggio Gear
17	SL2593	∅20x∅47x7	Paraolio Oil seal
18	SL3125	6204 2RS	Cuscinetto Bearing
19	SL0082	∅47	Seeger Seeger
20	SL2591	∅25x∅47x7	Paraolio Oil seal
21	SL2709	●	Tappo Tap
22	SL3112		Calotta Calotte
23	SL2527		Albero Shaft
24	SA1315	Assembly	Calotta Calotte
25	SL0125		Ingranaggio Gear
26	SL2589		Albero Shaft
27	SA1014	400V/3Ph/50Hz	Statore Stator
27	SA1015	230V/1Ph/50Hz	Statore Stator
28	SL0128		Ingranaggio Gear
29	SL0127	∅17x∅40x7	Paraolio Oil seal
30	SL0131	6203 2RS	Cuscinetto Bearing
31	SA7300	400V/3Ph/50Hz	Rotore Rotor
31	SA7400	230V/1Ph/50Hz	Rotore Rotor
32	SL0186		Calotta Calotte
33	SL3082		Distanziale Spacer
34	SL0176		Staffa Bracket
35	SL0177	16µF	Condensatore Condenser
36	SL0883	●	Scheda elettronica Electronic card
37	SL3020		Distanziale Spacer
38	SL3049		Fondo Bottom
39	3178340		Piedino Foot
40	SL0054		Interruttore Switch

(*) : fuori produzione / out of production

● : ricambio consigliato / spare part suggested