

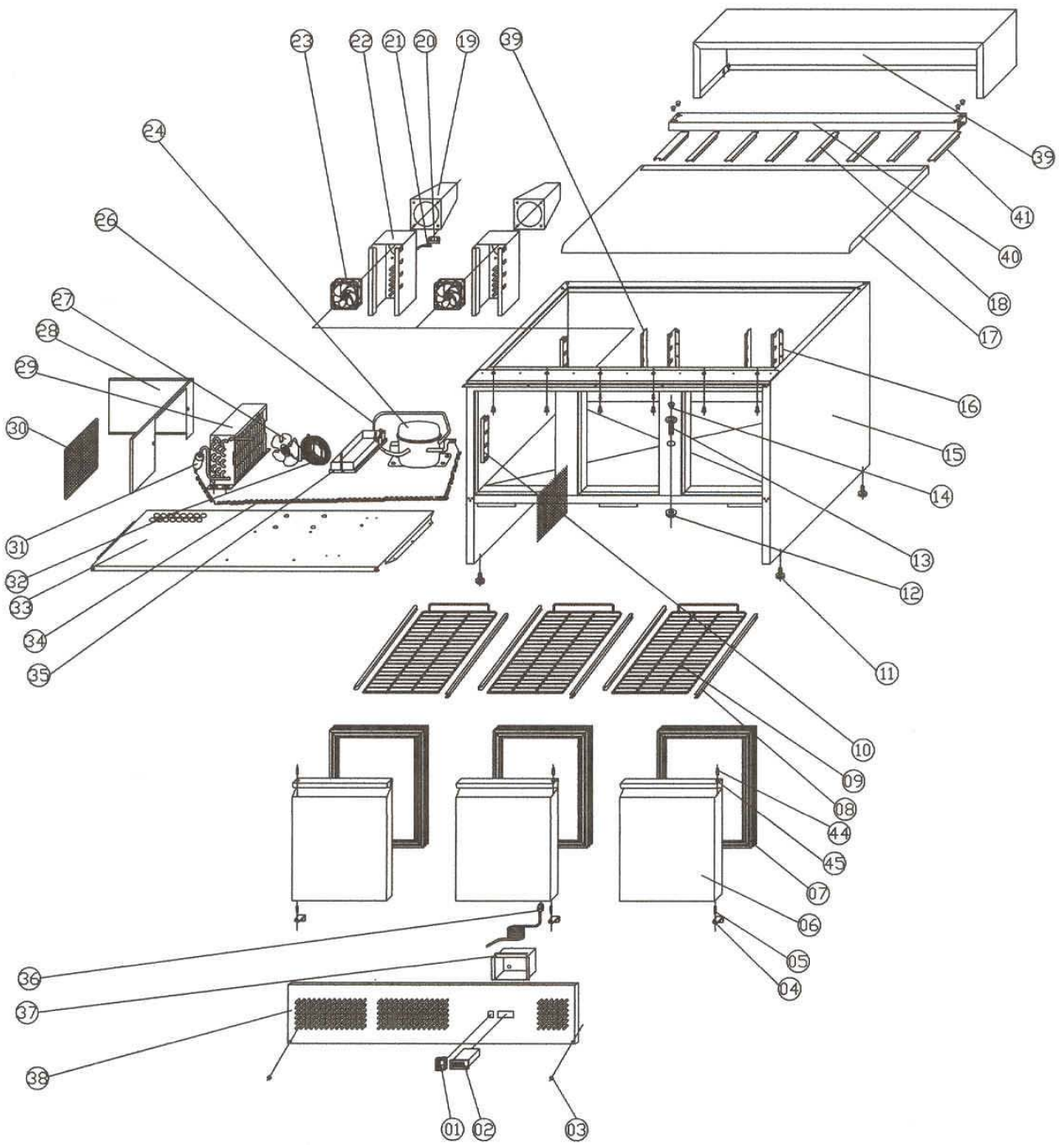


Kühlung Pizzadette

Artikel-Nr. 611025 (PS903)

Explosionszeichnung / Ersatzteile

Bitte bei Ersatzteilbestellung immer Artikelnummer und Seriennummer mit angeben!



EXPLODE OF PS903

SPARE PARTS LIST OF PS903

| NØ. | CODE | NAME | MODEL | QUY. | MATERIAL | REMARK | |
|-----|-------------|-------------------------|------------|--------|--------------|--------------|--|
| 01 | S900.01 | MAIN SWITCH | DRH-2415-3 | 1PC | | | |
| 02 | S900.02 | THERMOSTAT | XR20C | 1PC | | | |
| 03 | S900.03 | PLASTIC CAP | Φ13 | 8PCS | PLASTIC | | |
| 04 | S900.05 | DOWN HINGE/RIGHT/LEFT | | 3PCS | STAINLESS | 1LEFT 2RIGHT | |
| 05 | S900.06 | DOWN HINGE AXIS | | 3PAIRS | STAINLESS | | |
| 06 | S900.07 | DOOR/RIGHT/LEFT | | 3PCS | STAINLESS | 1LEFT 2RIGHT | |
| 07 | S900.08 | GASKET | | 3PCS | PVC | | |
| 08 | GN2100TN.31 | GUIDE/RIGHT/LEFT | | 3PCS | STAINLESS | | |
| 09 | GN2100TN.32 | SHELF | GN1/1 | 3PCS | COATED STEEL | | |
| 10 | S901.06 | SIDE SUPPORT/RIGHT/LEFT | | 4PCS | STAINLESS | | |
| 11 | S900.13 | FEET | | 4PCS | | | |
| 12 | S900.14 | DRAIN PIPE NUT | | 1PC | PLASTIC | | |
| 13 | S900.15 | DRAIN PIPE | | 1PC | PLASTIC | | |
| 14 | S900.16 | DRAIN PIPE COVER | | 1PC | PLASTIC | | |
| 15 | S903.01 | BODY | | 1PC | | | |
| 16 | S901.05 | BACK SUPPORT/RIGHT/LEFT | | 3PCS | STAINLESS | | |
| 17 | PS903.01 | GRANITE PANNEL | | 1PC | | | |
| 18 | PS900.02 | SUPPORT | | 6PCS | STAINLESS | | |
| 19 | S901.03 | AIRFLOW DUCT | | 2PCS | STAINLESS | | |
| 20 | S900.31 | SENSOR FIXED CLIP | | 1PC | STAINLESS | | |
| 21 | S900.32 | SENSOR | | 1PC | | | |
| 22 | S901.04 | CIRCLE FAN SUPPORT | | 2PCS | STAINLESS | | |
| 23 | GN2100TN.23 | CIRCLE FAN | 9225 | 2PCS | | | |
| 24 | S903.03 | COMPRESSOR | GVY75AA | 1PC | | | |
| 26 | S900.36 | DISCHARGE TUBE | Φ6 | 1PC | COPPER | | |

| N0. | CODE | NAME | MODEL | QUY. | MATERIAL | REMARK | |
|------------|-------------|-----------------------|------------------------------|-------------|-----------------|---------------|--|
| 27 | GN650TN.34 | CODENSER FAN | CA01-01/Φ200 | 1PC | | | |
| 28 | S903.06 | CONDENSOR COVER BOARD | 370×400×253 | 1PC | ZINCIFY STEEL | | |
| 29 | GN650TN.38 | CONDENSER | | 1PC | | | |
| 30 | S903.08 | FILTER | | 1PC | | | |
| 31 | S1410TN.14 | FILTER DRIER | 25g | 1PC | XH-9 | | |
| 32 | GN650TN.46 | BASKET GUARD GRILLS | Φ246*30 | 1PC | COATER STEEL | | |
| 33 | S903.09 | UNIT BOARD | | 1PC | ZINCIFY STEEL | | |
| 34 | S900.43 | CAPILLARY | Φ1.15×3000 | 1PC | COPPER | | |
| 35 | S900.40A | WATER PAN | | 1PC | STAINLESS | | |
| 36 | S900.47 | PLUG | LT312/1.5MM ² ×3G | 1PC | | | |
| 37 | S900.48 | JUNCTION BOX | | 1PC | ZINCIFY STEE | | |
| 38 | S903.11 | FRONT PANEL | | 1PC | STAINLESS | | |
| 39 | PS903.03 | BASIN BOX | | 1PC | STAINLESS | | |
| 40 | PS903.02 | BASIN BRACKET | | 1PC | STAINLESS | | |
| 41 | PS900.03 | SIDE SUPPORT | | 1PC | STAINLESS | | |