

# Eclipse 2000 Service Parts

This part list contains the service parts for the Eclipse 2000 systems.

The models that are covered include:

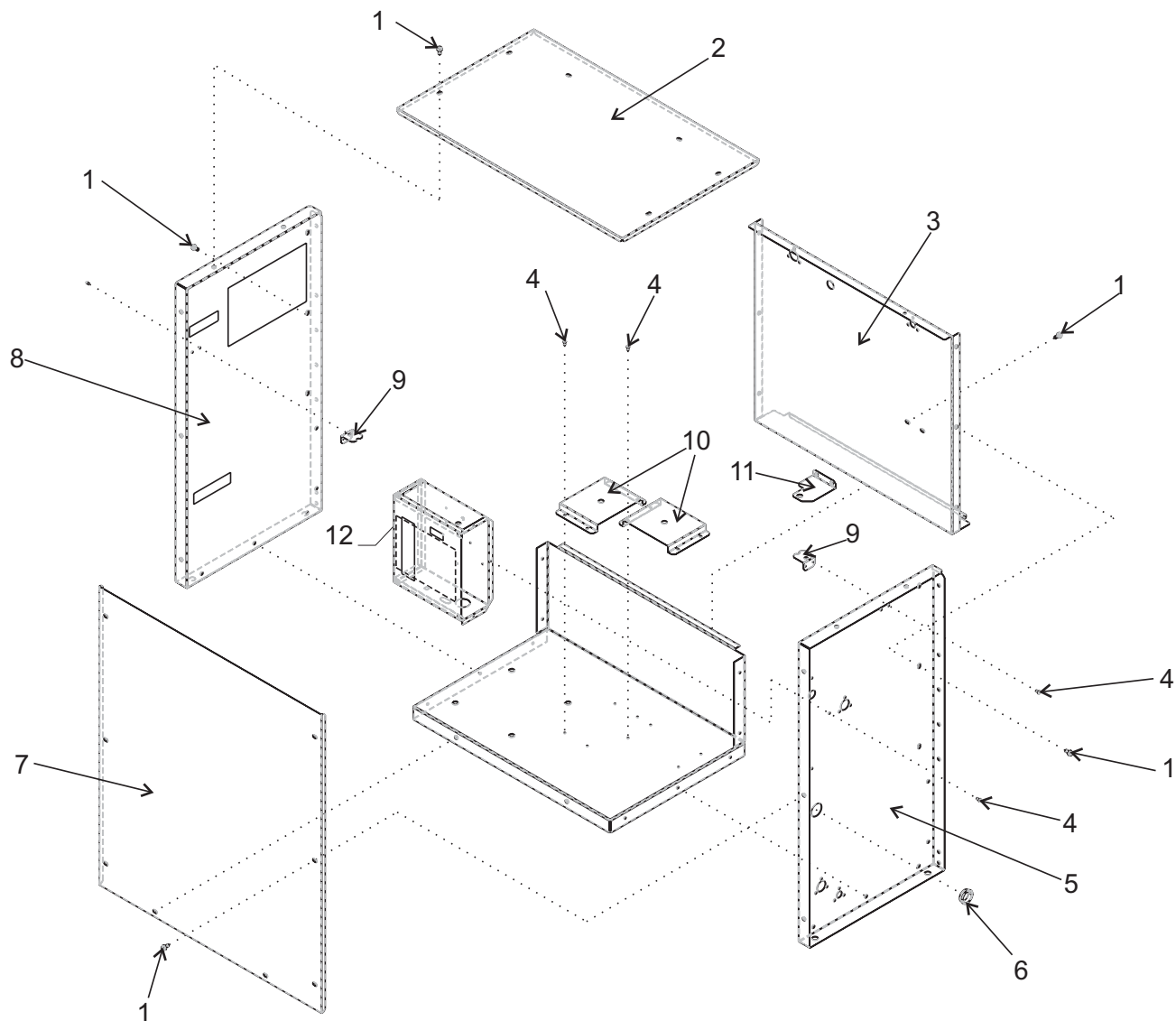
- CME2086
- CP2086
- ERC2086

## Table of Contents

CME2086 Cabinet . . . . .	Page 2
CME2086 Interior Parts . . . . .	Page 3
CME2086 Refrigeration System . . . . .	Page 4
CME2086 Electrical . . . . .	Page 5
CP2086 Cabinet . . . . .	Page 6
CP2086 Refrigeration Systems . . . . .	Page 7
CP2086 Control Box . . . . .	Page 8
Remote Condensers . . . . .	Page 9
CME2086 Schematic Diagram . . . . .	Page 10
CME2086 Wiring Diagram . . . . .	Page 11
CP2086 Single Phase Schematic Diagram . . . . .	Page 12
CP2086 Single Phase Wiring Diagram . . . . .	Page 13
CP2086 Three Phase Wiring Diagram . . . . .	Page 14
CP2086 Three Phase Schematic Diagram . . . . .	Page 15

# Eclipse 2000 Service Parts

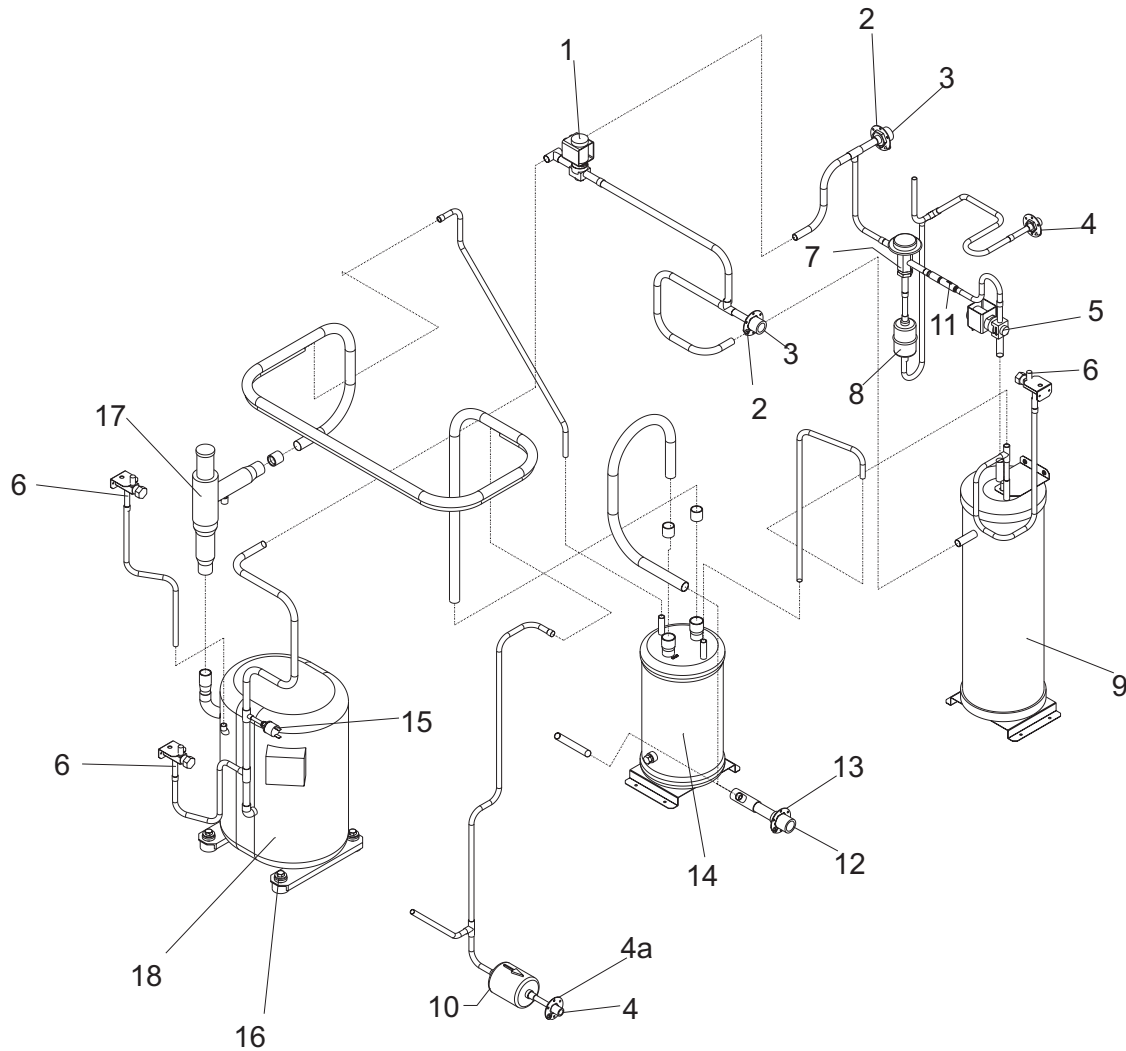
## CP2086 Cabinet



Item Number	Part Number	Description	Item Number	Part Number	Description
1	03-1645-01	Screw	10	A37948-001	Receiver or accumulator bracket
2	A37853-001	Top cover	11	A37949-001	Receiver top bracket
3	A37845-001	Back panel	12	A38430-001	Control box cover
4	03-1531-01	Screw			
5	A37829-001	Right side panel			
6	12-1213-20	Snap bushing			
7	A37896-001	Front cover			
8	A37829-002	Left side panel			
9	A37962-001	Service valve bracket			

# Eclipse 2000 Service Parts

## CP2086 Refrigeration Systems



Item Number	Part Number	Description	Part Number	Description
1	11-0507-23	By pass valve	13	16-0701-18 Mounting flange
2	16-0701-14	Mounting flange	14	16-1109-01 Accumulator
3	16-0850-01	Discharge quick connect	15	11-0501-22 Hi pressure cut out
4	16-0850-03	Liquid quick connect	16	03-1729-03 Hard mount pad
4a	16-0701-07	Mounting flange		03-1729-02 Hard mount washer
5	11-0546-21	Liquid inlet valve		03-1729-01 Hard mount
6	16-0832-20	Access valve		03-1405-20 Cap screw
7	16-1044-01	Headmaster	17	16-1096-01 CPR valve
8	02-3231-02	Filter	18	Compressors
9	16-1085-02	Receiver		
10	02-3319-02	Filter drier		
11	16-1029-01	Check valve		
12	16-0850-04	Suction quick connect		

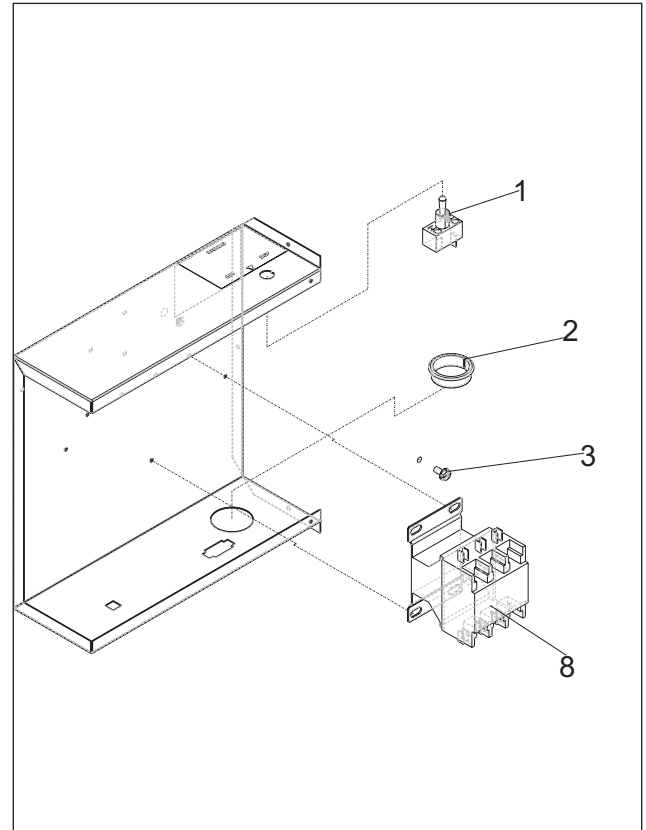
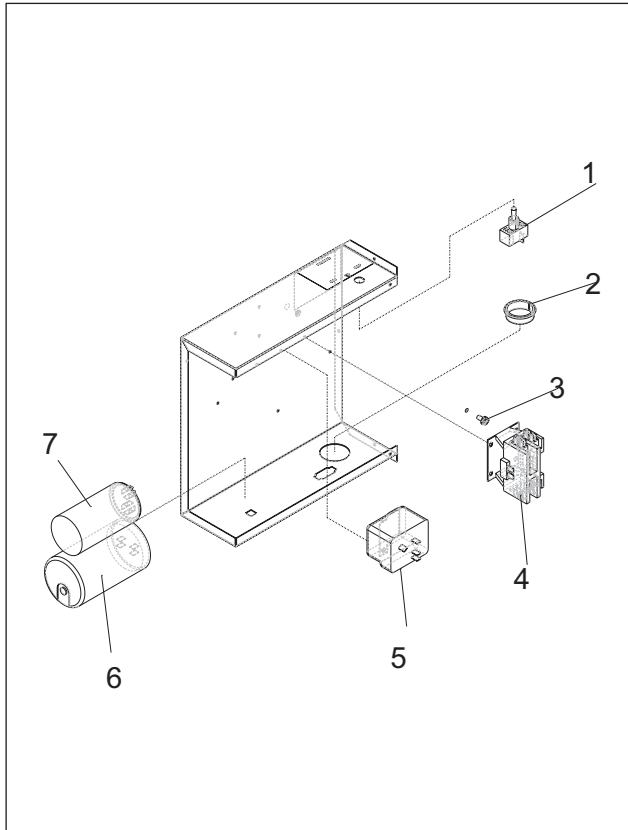
CP2086-32	single phase	18-8877-22
CP2086-2	three phase	18-8877-23

All compressors are 208-230 volt, 60 Hz.  
Single phase compressors require starting components, order separately

	18-8828-01	Crankcase heater
19	12-2865-01	75' Interconnecting harness

# Eclipse 2000 Service Parts

## CP2086 Control Box



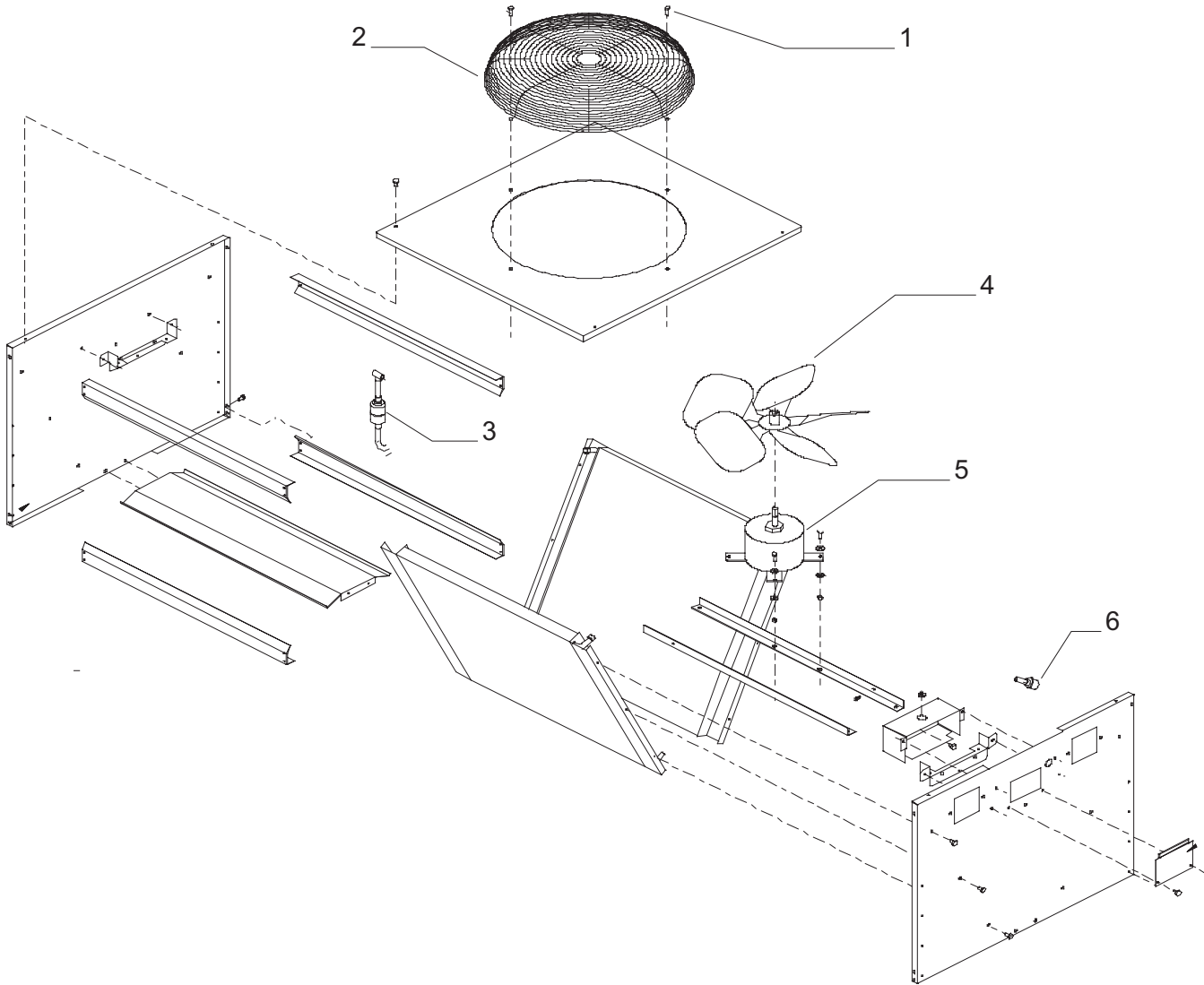
Item Number	Part Number	Description
1	12-0426-01	Toggle switch
2	12-1213-20	Snap bushing
3	03-1531-01	Mounting screw
4	12-2595-01	Single phase contactor
5	18-1903-55	Potential relay
6	18-1901-58	Start capacitor
7	18-1902-62	Run capacitor
8	12-2533-01	Three phase Contactor

Not Shwn, single phase only

9	12-2679-01	Relay, 24 volt
10	12-2906-01	Harness for time delay
11	12-2836-02	Transformer
12	11-0530-01	Time delay relay

# Eclipse 2000 Service Parts

## Remote Condensers



### Model ERC2086

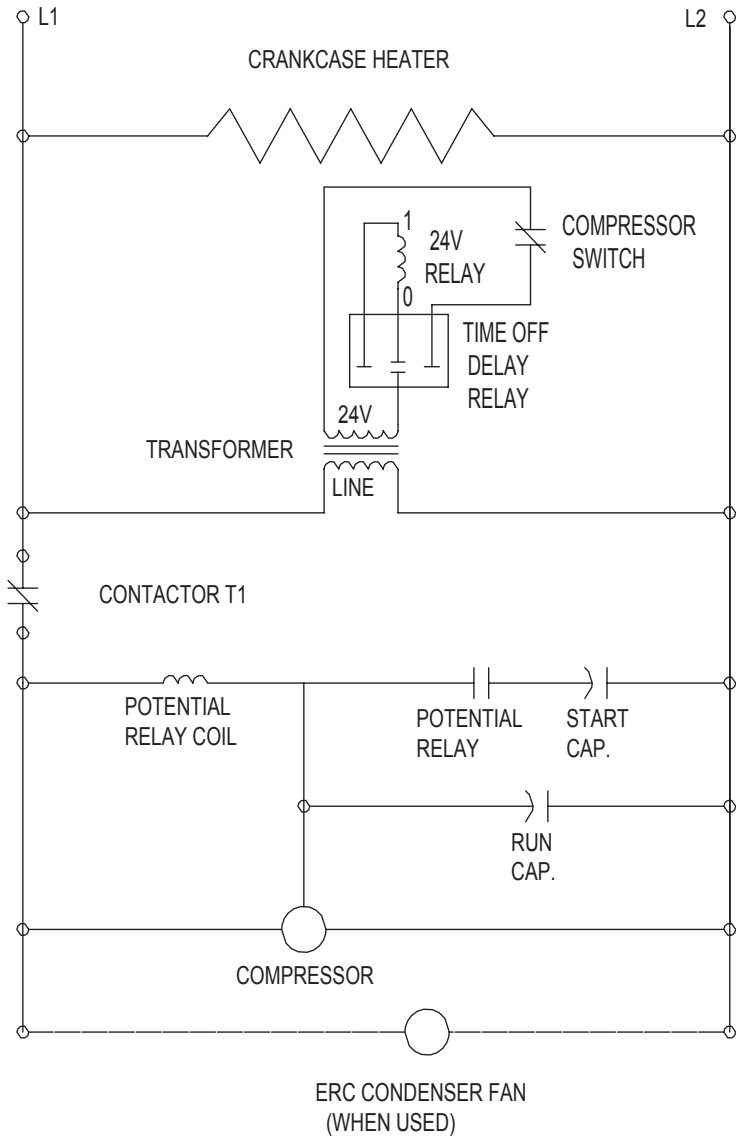
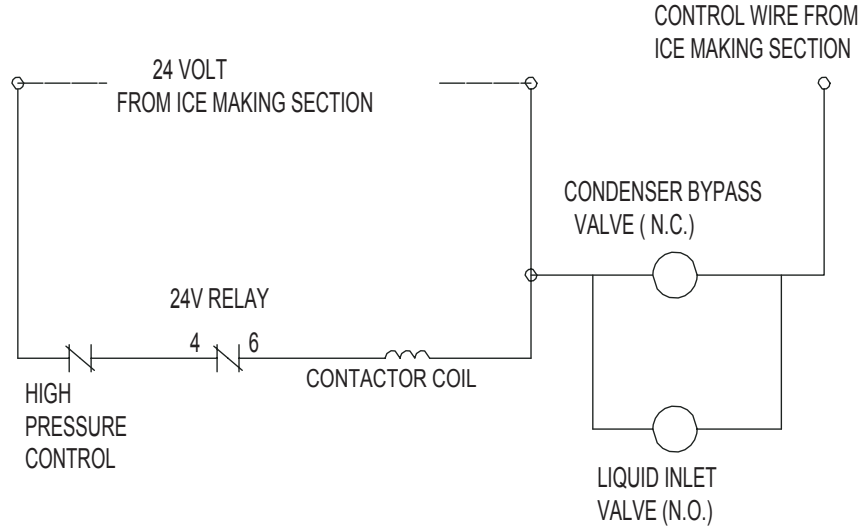
### Not Shown:

Item Number	Part Number	Description
1	03-1405-08	Screw
2	02-3770-01	Fan guard
3	02-3231-03	Filter
4	18-8820-01	Fan blade
5	12-2717-01	Fan motor
	18-8878-01	Motor capacitor
6	16-1057-04	Quick connect, discharge
	16-1057-03	Quick connect, liquid

A37169-001	Leg
A37296-001	Leg brace
03-1645-01	Screw for legs

# Eclipse 2000 Service Parts

## CP2086 Single Phase Schematic Diagram




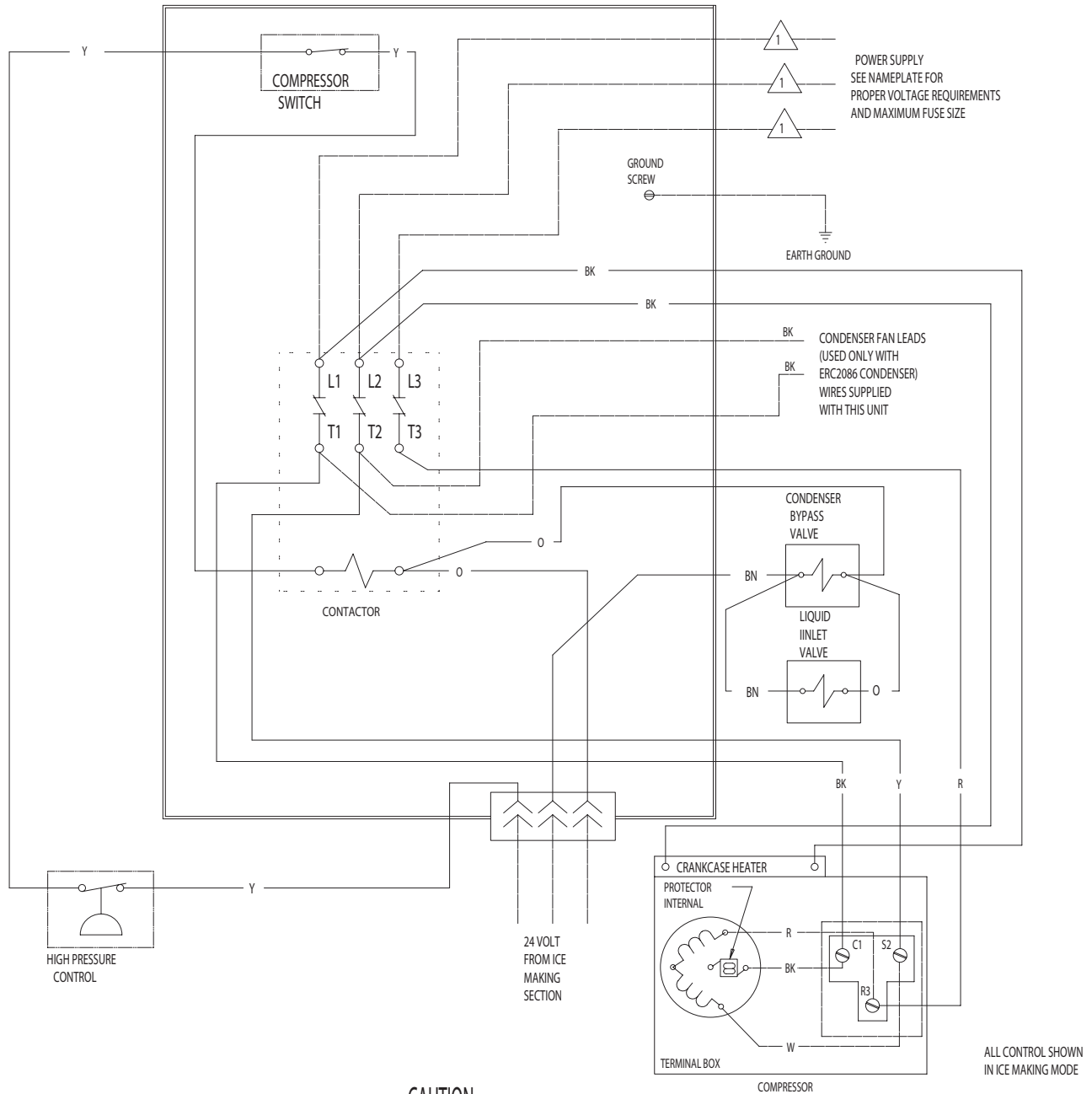
# Eclipse 2000 Service Parts

## CP2086 Single Phase Wiring Diagram

17-2984-01

USE COPPER CONDUCTORS ONLY

 DASHED LINES INDICATE FIELD WIRING WHICH MUST BE INSTALLED IN ACCORDANCE WITH THE NATIONAL ELECTRICAL CODE AND ALL STATE AND LOCAL CODES.



THIS UNIT MUST  
BE GROUNDED.

CAUTION:

MORE THAN ONE DISCONNECT MEANS MAY BE  
REQUIRED TO DISCONNECT ALL POWER TO THIS UNIT.

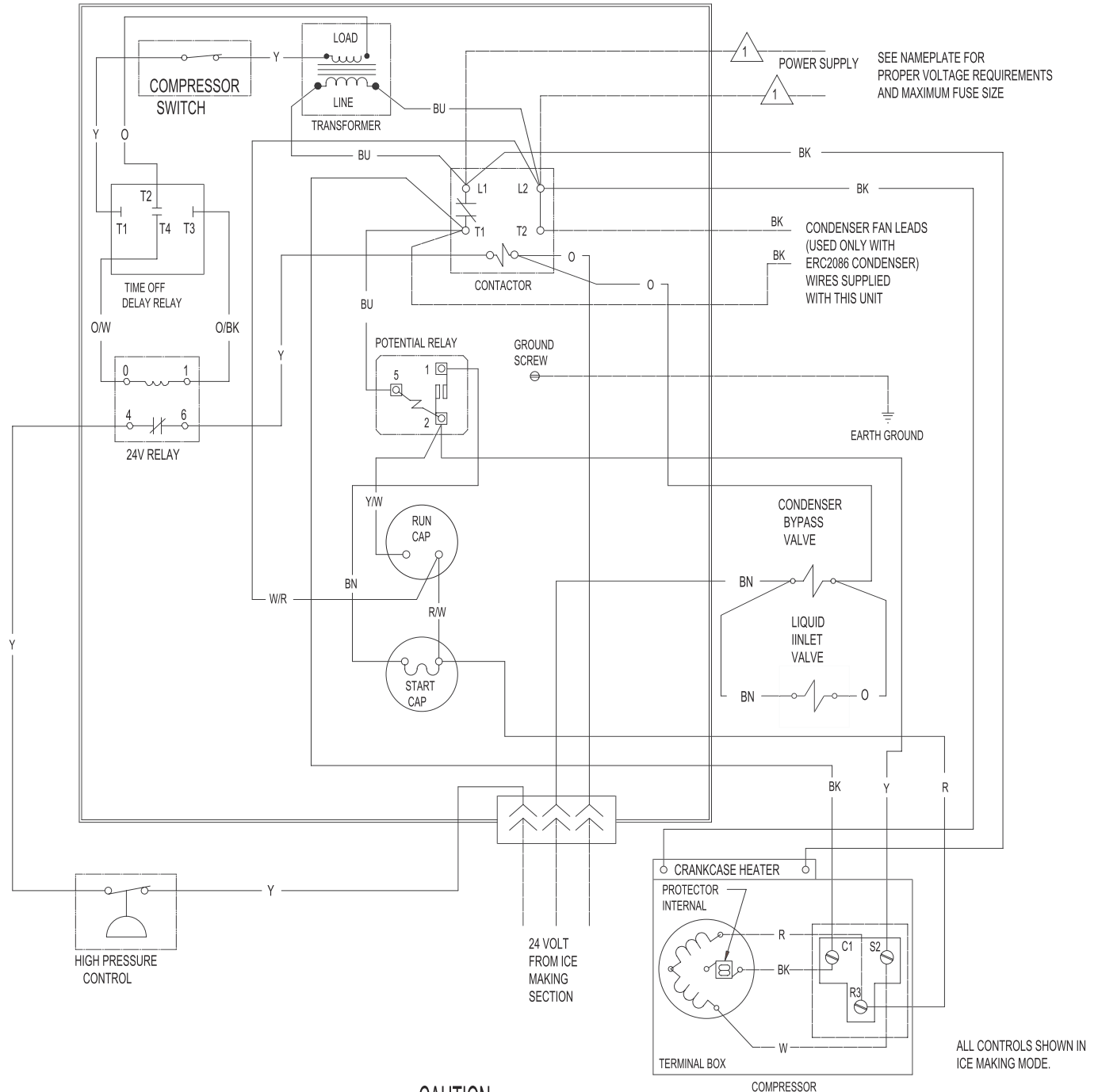
# Eclipse 2000 Service Parts

## CP2086 Three Phase Wiring Diagram

17-2982-01

USE COPPER CONDUCTORS ONLY

**⚠** DASHED LINES INDICATE FIELD WIRING WHICH MUST BE INSTALLED IN ACCORDANCE WITH THE NATIONAL ELECTRICAL CODE AND ALL STATE AND LOCAL CODES.



**CAUTION:**

MORE THAN ONE DISCONNECT MEANS MAY BE REQUIRED TO DISCONNECT ALL POWER TO THIS UNIT.

THIS UNIT MUST BE GROUNDED.



# Eclipse 2000 Service Parts

## CP2086 Three Phase Schematic Diagram

