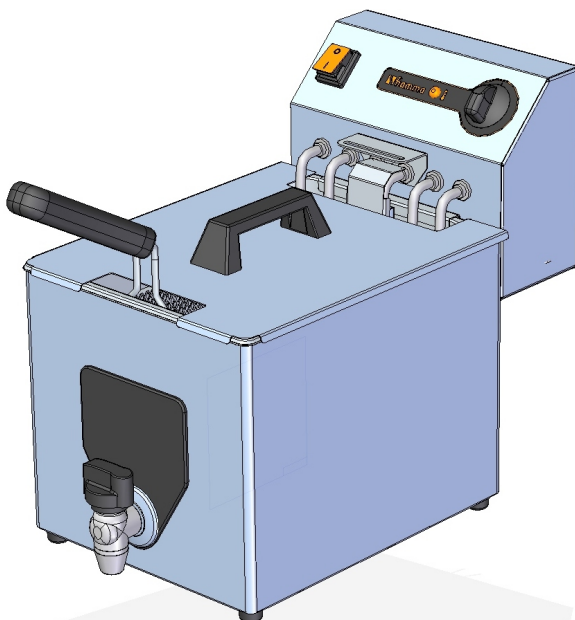




FRITADEIRA FF10TR NV FRYER FF10TR NV



FRITADEIRA FF10TR NV FIAMMA - 2.0.089.1000 FRYER FF10 TR NV FIAMMA

POTÊNCIA 5100 W
POWER

TENSÃO DE ALIMENTAÇÃO 400V / 50Hz
POWER SUPPLY

TERMOSTATO REGULÁVEL 90-180 °C
ADJUSTABLE THERMOSTAT

PRODUTIVIDADE 15 kg/h
PRODUCTIVITY

PESO LIQUIDO 8,5 kg
NET WEIGHT

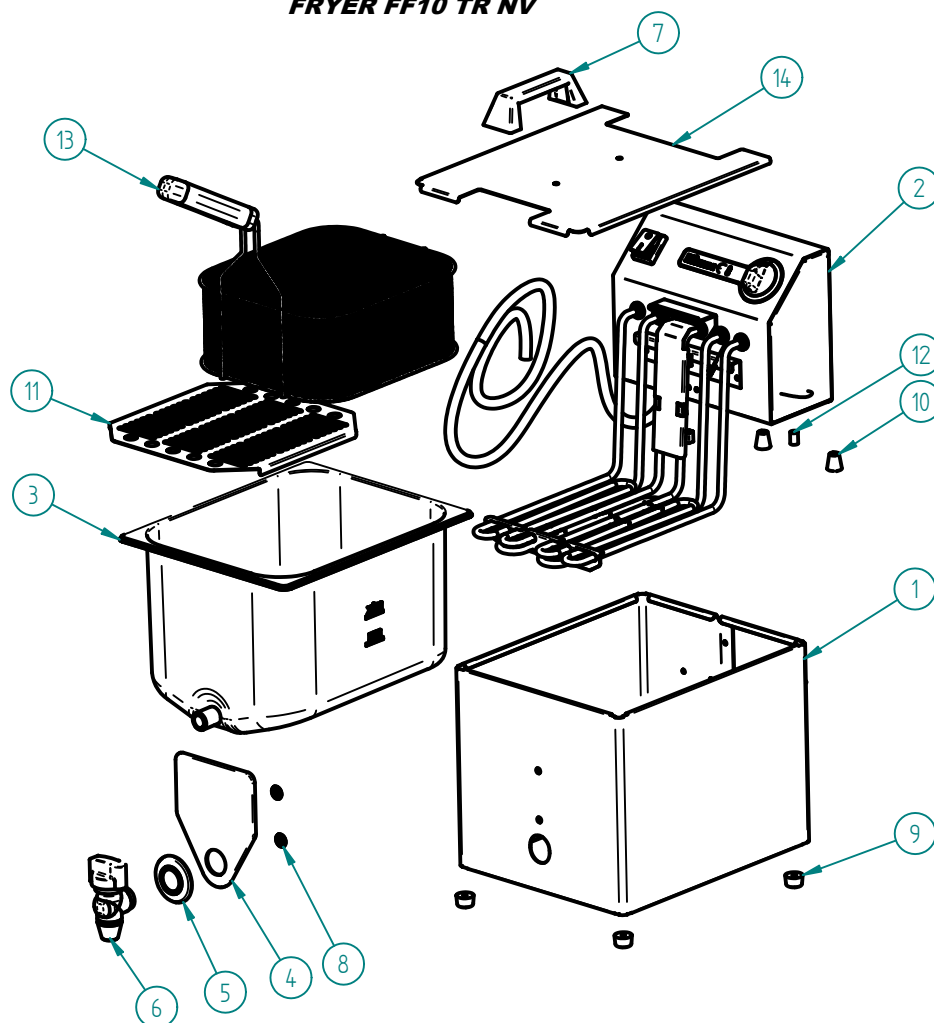
PESO BRUTO 9,5 kg
GROSS WEIGHT

DIMENSÕES (LxPxH) 265x475x375 mm
DIMENSIONS (LxPxH)

DIMENSÕES DA EMBALAGEM (LxPxH) 300x540x420 mm
PACKAGE DIMENSIONS

DIMENSÕES DO CESTO (LxPxH) 220x250x104 mm
BASKET DIMENSIONS

CAPACIDADE DE ÓLEO 8 L
OIL CAPACITY

FRITADEIRA FF10TR NV**FRYER FF10 TR NV****LISTA DE COMPONENTES E ACESSÓRIOS****Spare parts list**

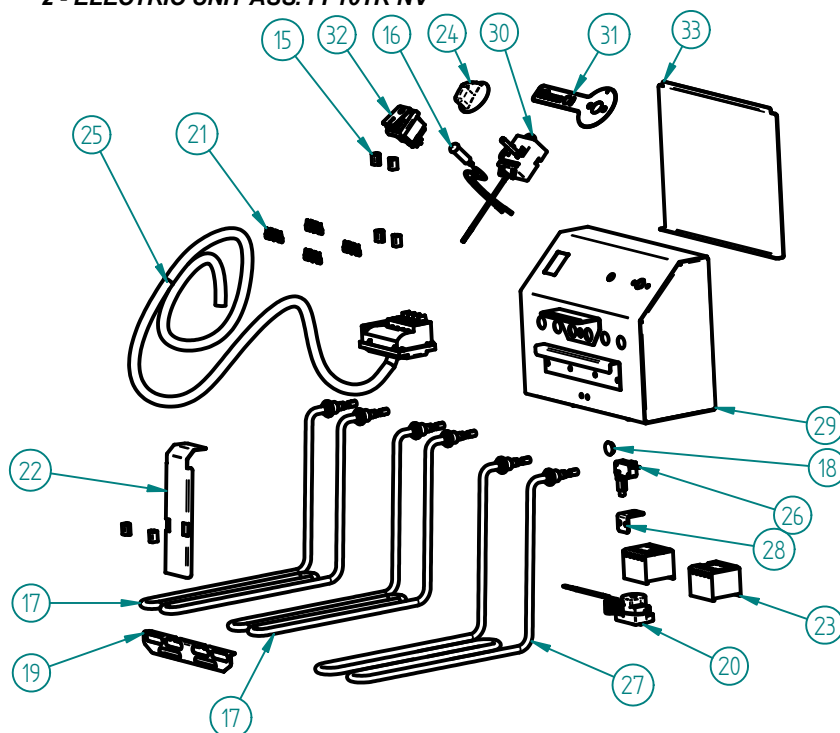
ITEM Nº	CÓDIGO	DESIGNAÇÃO	DESIGNATION	QUANT.
1	7.0.087.1005	BLINDAGEM CONJUNTO FF10 NV	SHIELDS ASS. FF10 NV	1
2	7.0.089.1000	CABEÇOTE MONTADO FF10 TR NV	ELECTRIC UNIT ASS. FF10 TR NV	1
3	4.0.087.1029	CUBA GN1/2 H210mm C/ RACORD FF10 NV	TANK GN1/2 H210MM FF10 NV	1
4	4.0.087.0034	PROTECÇÃO TERMICA TORNEIRA FF	THERMIC TAP PROTECTION	1
5	4.0.087.0032	ESPELHO CROMADO 3/4"	CHOMED MIRROR 3/4"	1
6	4.0.087.0030	TORNEIRA G1/2	TAP G1/2F	1
7	4.1000.6220	PEGADEIRA REF. 58 EM PVC	PVC HANDGRIP	1
8	4.0.087.0040	ANILHA FIXAÇÃO RÁPIDA 6MM	FIXING RING 6MM	2
9	4.2.000.9246	BATENTE PRETO Nº2	BLACK KNOCKER NR. 2	4
10	4.0.085.0027	MANIPULO FRITADEIRAS (M5)	HANDLE (M5)	2
11	7.0.087.1070	GRELHA PROTECÇÃO RESIST. FF10 NV	HEATING ELEMENT PROTECTION GRID FF10 NV	1
12	4.0.028.0035	CASQUILHO GUIA TAB. SUP. PACIFIC	BUSHING GUIDE TRAY TOP PACIFIC	1
13	4.0.085.1031	CESTO CONJ. FF6 NV/FF10 NV	BASKET FF6 NV/FF10 NV	1
14	7.0.085.1060	TAMPA CUBA FF6 NV / FF10 NV	TANK COVER FF6 NV / FF10 NV	1

FRITADEIRA FF10TR NV

FRYER FF10 TR NV

2 - CABEÇOTE MONTADO FF10TR NV - 7.0.089.1000

2 - ELECTRIC UNIT ASS. FF10TR NV



LISTA DE COMPONENTES E ACESSÓRIOS

Spare parts list

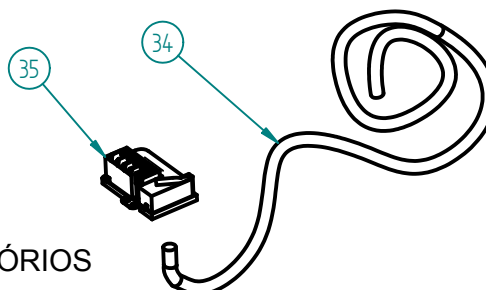
ITEM Nº	CÓDIGO	DESIGNAÇÃO	DESIGNATION	QUANT.
15	4.0.085.0017	MOLA P/ CAPILARES	WIRE SPRING	6
16	4.0.085.0022	SINALIZADOR LARANJA TER. PONT. 250MM SL10207	ORANGE LED 250MM	1
17	4.0.089.1004	RESISTENCIA SUPERIOR 1700W 230V FF10 TR NV	UPPER HEATING ELEMENT 1700W 230V FF10 TR NV	2
18	4.0.085.0035	TAPA FUROS Ø10MM	RUBBER COVER Ø10MM	1
19	7.0.089.0065	SEPARADOR RESISTENCIA FF10 TR	HEATING ELEMENT ISOLATOR FF10TR	1
20	4.0.085.0011	TERMOSTATO SEGURANÇA 220°	SAFETY THERMOSTAT 220°C	1
21	4.0.085.0114	MOLA ARAME P/ BOLBO	SPRING	4
22	7.0.085.1067	BLINDAGEM CAPILARES FF NV	CAPILLARY SHIELD FF NV	1
23	4.0.089.0003	CONTACTOR 16A-AC1 BOBINE 230V	CONTACTOR 16A-AC1 230V	2
24	4.0.075.0040	MANIPULO TEMPORIZADOR	BUTTON	1
25	7.0.089.0080	CABO H07RN-F 5G1,5-2,0MT S/ FICHA+CC	FEEDING CABLE ASS. FF10 TR	1
26	4.0.085.0021	MICRO INTERRUPTOR RLP/A	MICRO SWITCH RLP/A	1
27	4.0.089.1005	RESISTENCIA INFERIOR 1700W 230V FF10 TR NV	LOWER HEATING ELEMENT 1700W 230V FF10 TR NV	1
28	7.0.085.1026	FIXADOR MICRO INTERRUPTOR FF NV	MICRO SWITCH FIXER	1
29	7.0.089.1025	CASTELO CONJUNTO FF10 TR NV	SHIELD OF ELECTRIC UNIT FF10 TR NV	1
30	4.0.085.0009	TERMOSTATO REGULAVEL 180°	ADJUSTABLE THERMOSTAT 180°C	1
31	4.0.190.0050	PAINEL PERSONALIZADO FIAMMA FCF	STICKER FCF FIAMMA	1
32	4.0.085.0018	INTERRUPTOR LARANJA 0-1 IP65	ORANGE SWITCH	1
33	7.0.085.0050	TAMPA CASTELO FF	COVER FOR ELECTRIC UNIT FF	1

FRITADEIRA FF10TR NV

FRYER FF10 TR NV

25 -CABO H07RN-F 5G1,5-2,0MT S/ FICHA+CC) - 7.0.089.0080

25- FEEDING CABLE ASS. FF10 TR



LISTA DE COMPONENTES E ACESSÓRIOS

Spare parts list

ITEM Nº	CÓDIGO	DESIGNAÇÃO	DESIGNATION	QUANT.
34	4.0.089.0010	CABO H07RN-F 5G1,5	CABLE H07RN-F 5G1,5	1
35	4.0.089.0014	CERRA CABOS AD030T	CABLE FASTENER	1

ESQUEMA ELECTRICO

Electric Scheme

