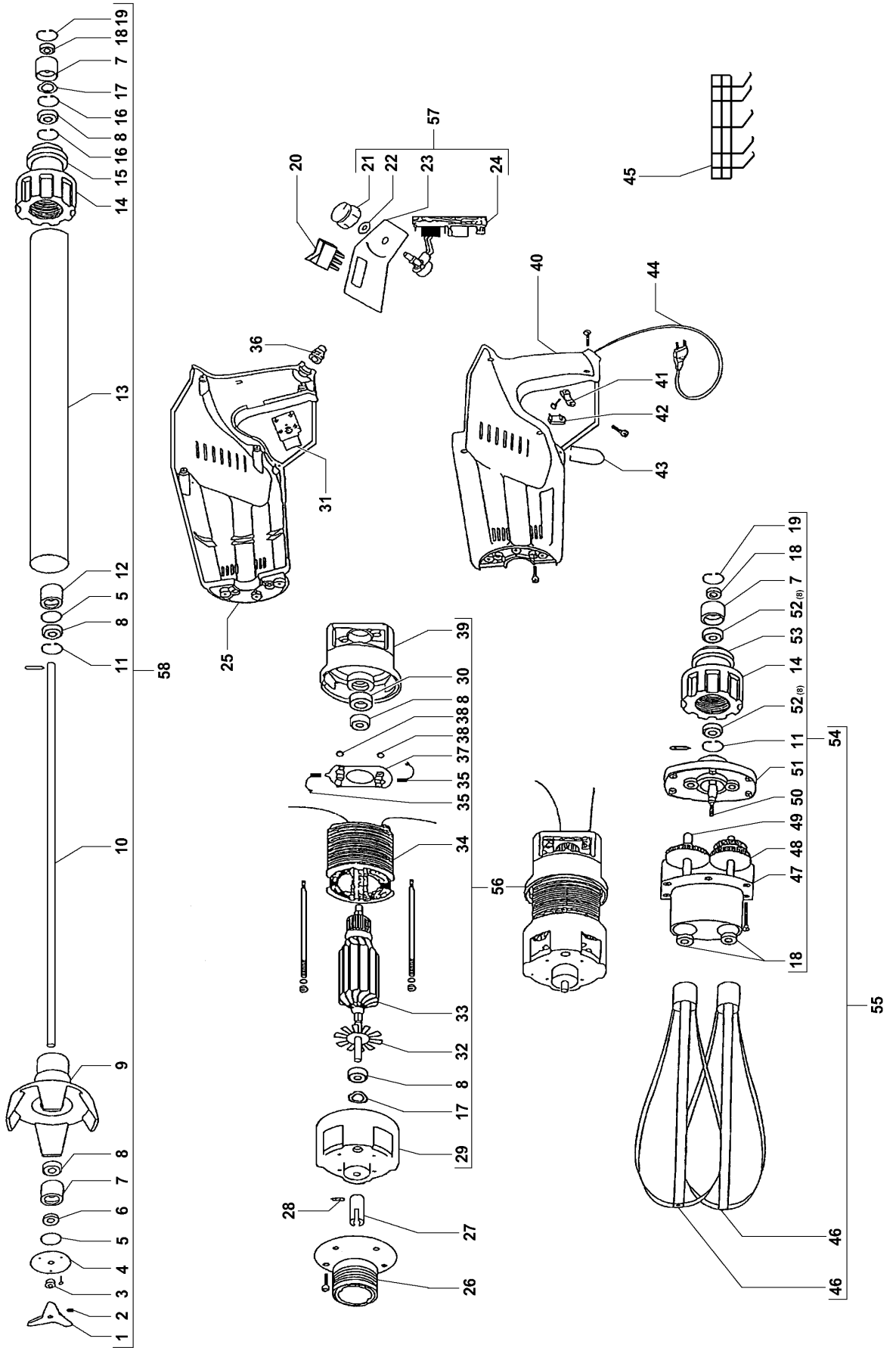


Mescolatore-frusta mod.FM/3
Mixer & whisk mod.FM/3



MESCOLATORE-FRUSTA MOD.FM/3 MIXER & WHISK MOD.FM/3

| RIF. | CODICE / CODE | DIN - UNI | DESCRIZIONE / DESCRIPTION |
|------|---------------|-------------------|---|
| 1 | SL0744 | | Coltello / Cutter |
| 2 | SL0769 | M5x6 A2 | Grano / Grub screw |
| 3 | SL0772 | V-8-S | Anello / V-Ring |
| 4 | SL0777 | | Disco / Disk |
| 5 | SL0773 | OR 128 | Anello / O-Ring |
| 6 | SL1454 | 8x18x6 | Paraolio / Oil seal |
| 7 | SL0740 | | Boccola / Bush |
| 8 | SL0271 | 608H ZZ inox | Cuscinetto / Bearing |
| 9 | SL0775 | | Campana / Protection |
| 10 | SL0776 | ø8 L=400 | Albero (standard) / Shaft (standard) |
| 10 | SL0976 | ø8 L=300 | Albero / Shaft |
| 10 | SL0977 | ø8 L=350 | Albero / Shaft |
| 10 | SL0978 | ø8 L=500 | Albero / Shaft |
| 10 | SL0979 | ø8 L=600 | Albero / Shaft |
| 11 | SL0749 | ø22 | Seeger Interno / Spring Ring |
| 12 | SL0879 | | Boccola / Bush |
| 13 | SL0747 | ø40x2 L=400 | Tubo (standard) / Hose (standard) |
| 13 | SL0972 | ø40x2 L=300 | Tubo / Hose |
| 13 | SL0973 | ø40x2 L=350 | Tubo / Hose |
| 13 | SL0974 | ø40x2 L=500 | Tubo / Hose |
| 13 | SL0975 | ø40x2 L=600 | Tubo / Hose |
| 14 | SL0742 | | Ghiera / Locking ring |
| 15 | SL0741 | | Supporto / Support |
| 16 | SL0898 | ø8 | Seeger Esterno / Spring Ring |
| 17 | SL0748 | ø22 | Anello elastico / Ring |
| 18 | SL0746 | 8x18x5 | Paraolio / Oil seal |
| 19 | SL0750 | ø25 | Seeger Interno / Spring Ring |
| 20 | SL0758 | | Deviatore / Switch |
| 21 | SL1458 | | Pomello / Knob |
| 22 | SL1457 | | Dado / Nut |
| 23 | SL0760 | | Piastrina / Plate |
| 24 | SL0756 | 230V/1Ph/50-60Hz | Scheda elettronica / Electronic card |
| 25 | SL0730 | | Guscio blu / Blue cover |
| 26 | SL0732 | | Flangia / Flange |
| 27 | SL1496 | | Giunto / Joint |
| 28 | SL0129 | M5x10 A2 | Grano / Grub screw |
| 29 | SL0359 | | Calotta / Cap |
| 30 | SL0383 | | Boccola / Bush |
| 31 | SL0757 | | Interruttore / Switch |
| 32 | SL0384 | | Ventola / Fan |
| 33 | SL0386 | 230V/1Ph/50-60Hz | Rotore monofase / Single-phase rotor |
| 34 | SL0387 | 230V/1Ph/50-60Hz | Statore monofase / Single-phase stator |
| 35 | SL0389 | | Spazzola / Brush |
| 36 | SL0762 | | Passacavo / Cable clamp |
| 37 | SL0388 | | Piastrina / Plate |
| 38 | SL0390 | | Anello / Ring |
| 39 | SL0393 | | Calotta / Cap |
| 40 | SL0731 | | Guscio blu / Blue cover |
| 41 | SL0745 | | Piastrina blu / Blue plate |
| 42 | SL0840 | | Piastrina blu / Blue plate |
| 43 | SL0770 | | Gancio / Hook |
| 44 | SL0761 | 1Ph+N | Cavo elettrico monofase / Electric cable (single-phase) |
| 45 | SL0771 | | Portautensili / Accessory stand |
| 46 | SL0743 | | Frusta / Whisk |
| 47 | SL0733 | | Scatola / Box |
| 48 | SA8900 | | Ingranaggio / Gear |
| 49 | SA8800 | | Ingranaggio / Gear |
| 50 | SL0739 | | Ingranaggio / Gear |
| 51 | SL0774 | | Coperchio / Cover |
| 52 | SL0355 | 01/04/01 f.p.(*). | Cuscinetto (vedi rif.8) / Bearing (see rif.8) |
| 53 | SL0734 | | Supporto / Support |
| 54 | SA9500 | | Gruppo riduttore frusta / Whisk gear-box (assembly) |
| 55 | FRUSTAFM3 | | Gruppo frusta / Whisk (assembly) |
| 56 | SL0755 | 230V/1Ph/50-60Hz | Motore monofase / Single-phase motor |
| 57 | SA3600 | | Gruppo comandi / Controls (assembly) |
| 58 | MESCFM340 | L=400 | Gruppo mescolatore standard / Mixer standard (assembly) |
| 58 | MESCFM330 | L=300 | Gruppo mescolatore / Mixer (assembly) |
| 58 | MESCFM335 | L=350 | Gruppo mescolatore / Mixer (assembly) |
| 58 | MESCFM350 | L=500 | Gruppo mescolatore / Mixer (assembly) |
| 58 | MESCFM360 | L=600 | Gruppo mescolatore / Mixer (assembly) |

(*): fuori produzione / out of production