

Lavapentole professionali di lunga durata



Serie G

Modello G 66 alt

(capacità cestello cm 72x55x60 h)

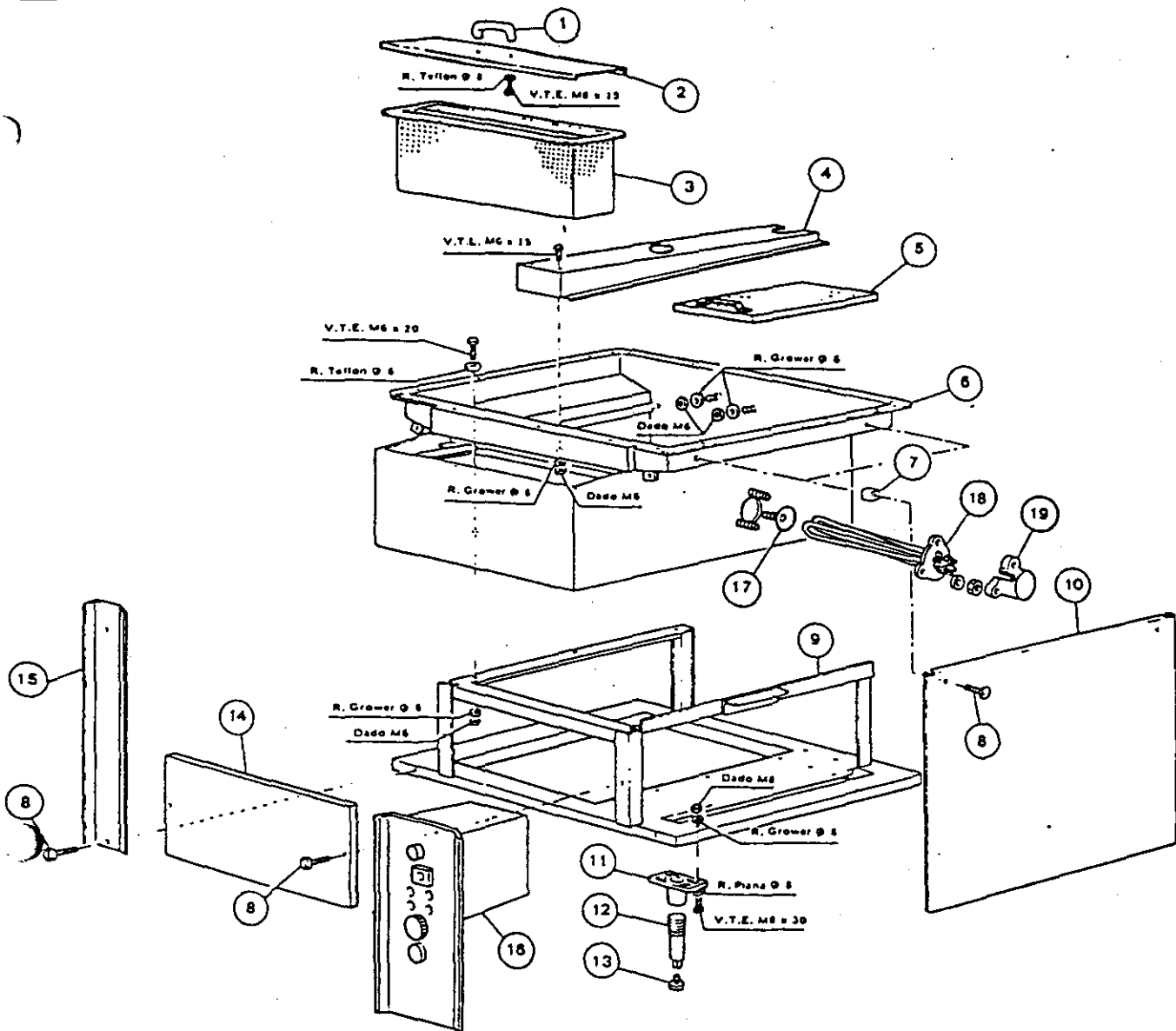
Modello G 131

(capacità cestello cm 137x55x60 h)

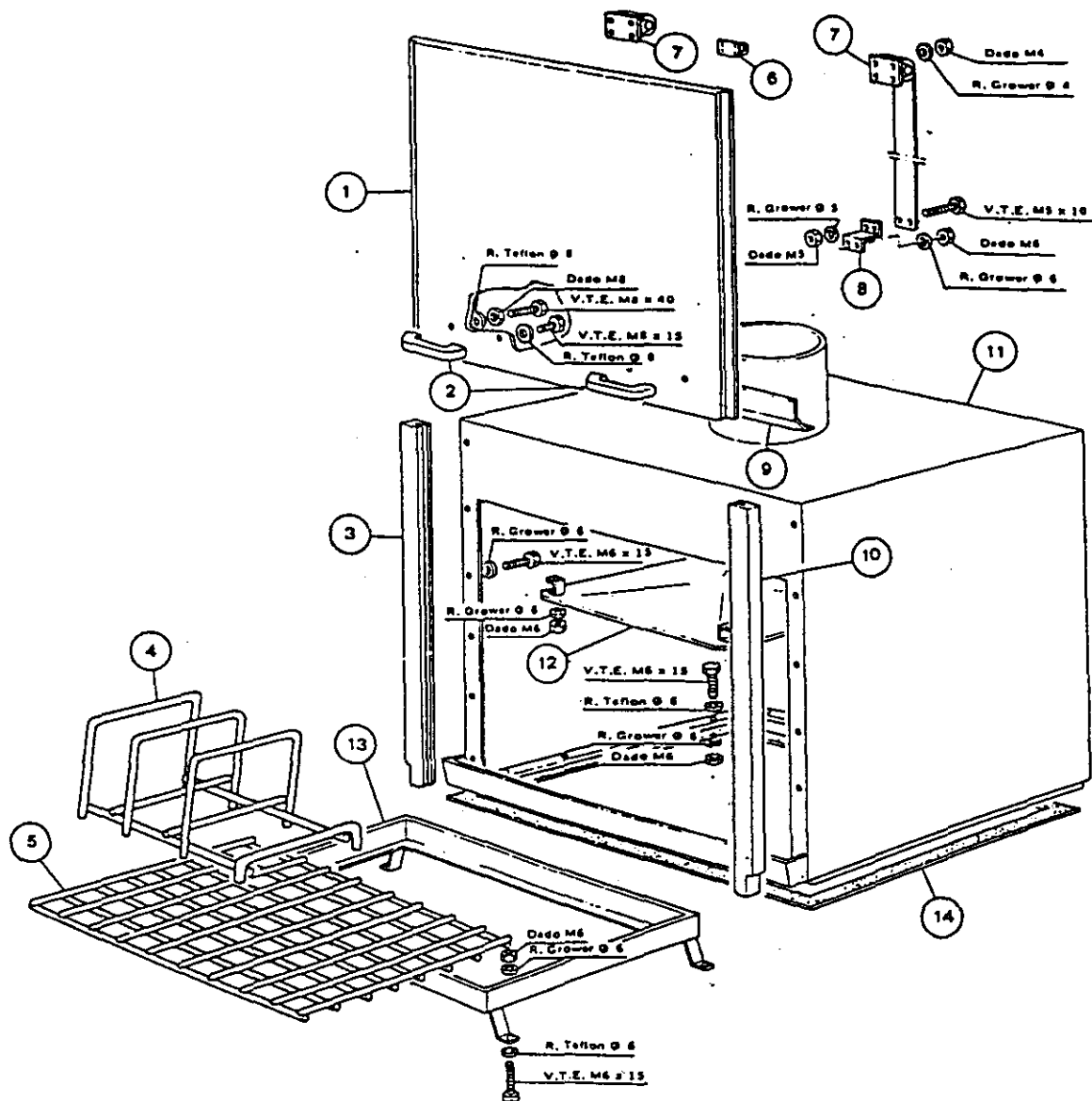
- a nastro per lavaggio a ciclo continuo
- speciali per esigenze particolari

 **COMENDA**

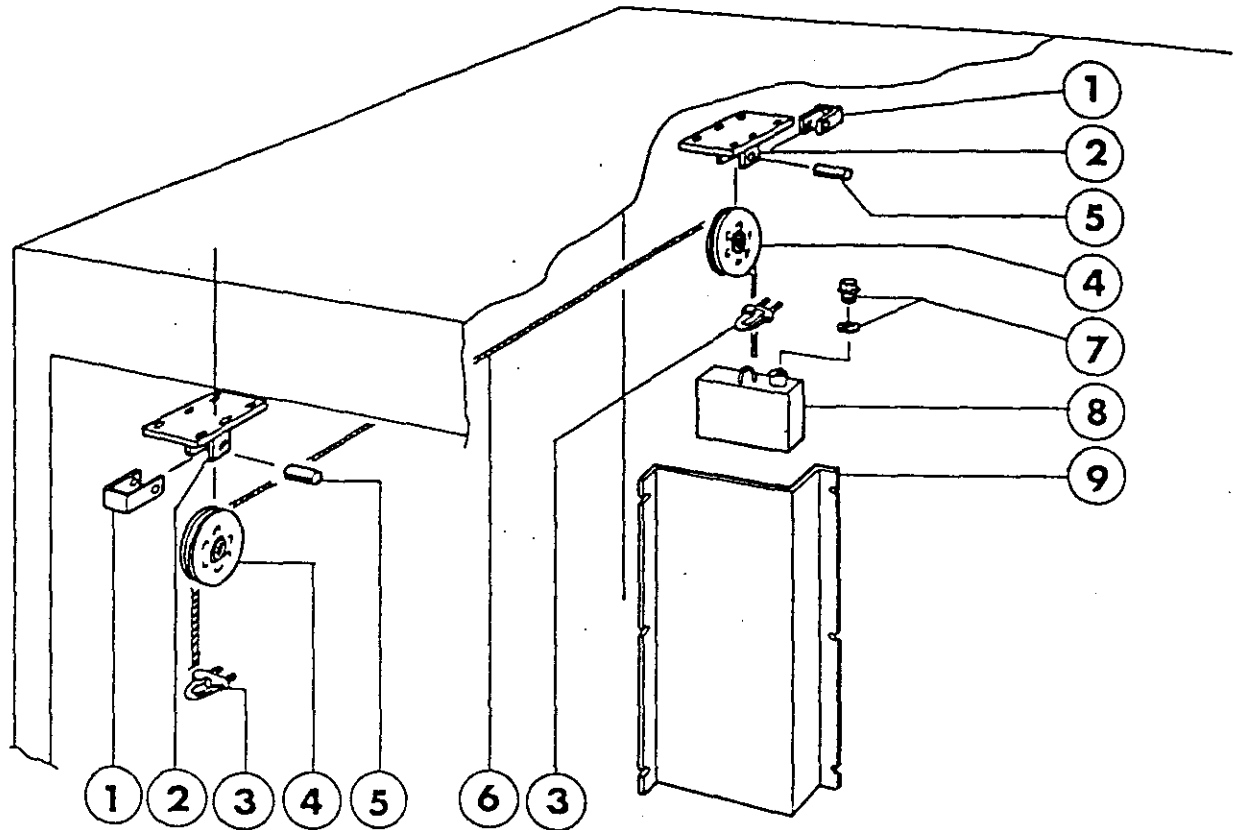
L'alta professionalità del lavaggio.



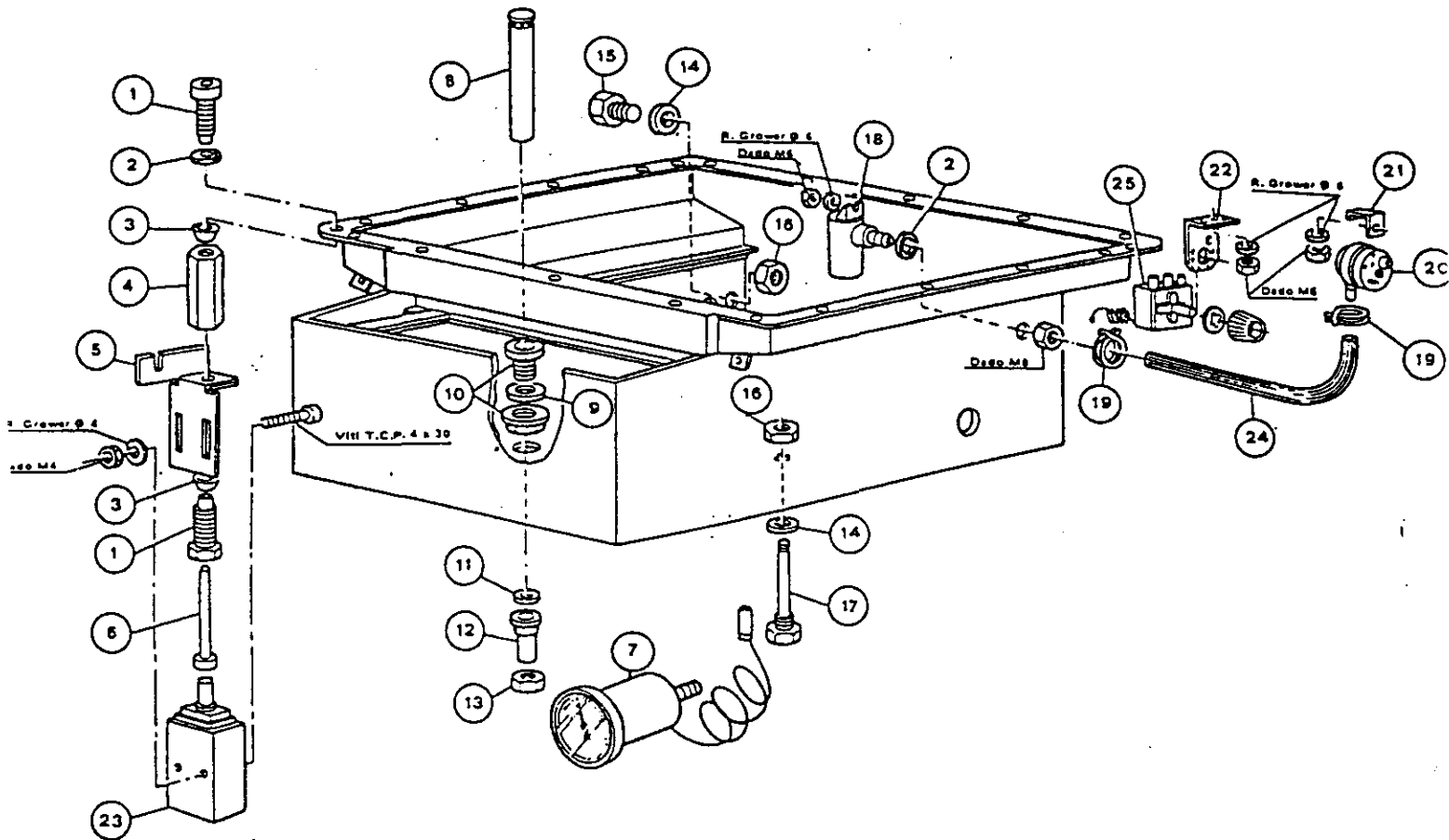
Posiz.	Codice - Code Code - Codex	Descrizione	Denomination	Description	Bezeichnung
1	450303	Maniglia per porte	Poignée	Handle	Türgriff
2	320325	Coperchio per filtro G66	Couvercle G66	Basket cover G 66	Filterdeckel G66
3	330531	Filtro a cestello G66	Filtre à panier G66	Basket G 66	Korbfilter G66
4	321016	Traversa portafiltro G66	Support filtre G66	Basket support G 66	Filteraufnahme G66
5	330533	Filtro vasca G66	Filtre G66	Tank sieve G 66	Tankfilter G66
6	340841	Vasca G66	Cuve G66	Tank G 66	Tank G66
7	160502	Nottolino distanziale fiss. pannelli	Rondelle	Panel supporter	Distanzbock Verkleidung
8	260224	Viti speciali TB 6 x 15	Vis TB 6 x 15	Screw TB 6x15	Schraube TB 6 x 15
9	390267	Telaio lavapetole G66	Chassis G66	Frame G 66	Rahmen G66
10	350261	Pannello laterale G66 - 131	Panneau lateral G66 - 131	Side panel G66 - 131	Schallfapel G66 - 131
11	510132	Supporto piede "nuova S"	Support	Foot support	Füßhalterung
12	510133	Piede "nuova S"	Pied	Foot	Füsse
13	210404	Piedino "nuova S"	Pied	Foot	Füsse
14	350164	Pannello frontale inferiore G66	Panneau frontal inf. G66	Front panel G 66	Frontblende G66
15	350166	Pannello frontale sinistro G66	Panneau frontal gauche G66	Left hand panel G 66	Linke Blende G66
16	110106	Impianto elettrico 380/3E	Tableau électrique 380/3E	Electric panel 380/3E	E-Schalttafel 380/3E
16	110108	Impianto elettrico 380/3V	Tableau électrique 380/3V	Electric panel 380/3V	E-Schalttafel 380/3V
16	110110	Impianto elettrico 220/3E	Tableau électrique 220/3E	Electric panel 220/3E	E-Schalttafel 220/3E
16	110112	Impianto elettrico 220/3V	Tableau électrique 220/3V	Electric panel 220/3V	E-Schalttafel 220/3V
18	200815	Guarnizione OR	O-Ring	O-Ring	O-Ring
18	110331	Resistenza 4200W	Résistance 4200W	Heater 4200 W	Heizkörper 4200W
19	161102	Copriresistenza	Protection résistance	Element cover	Heizkörperschutz



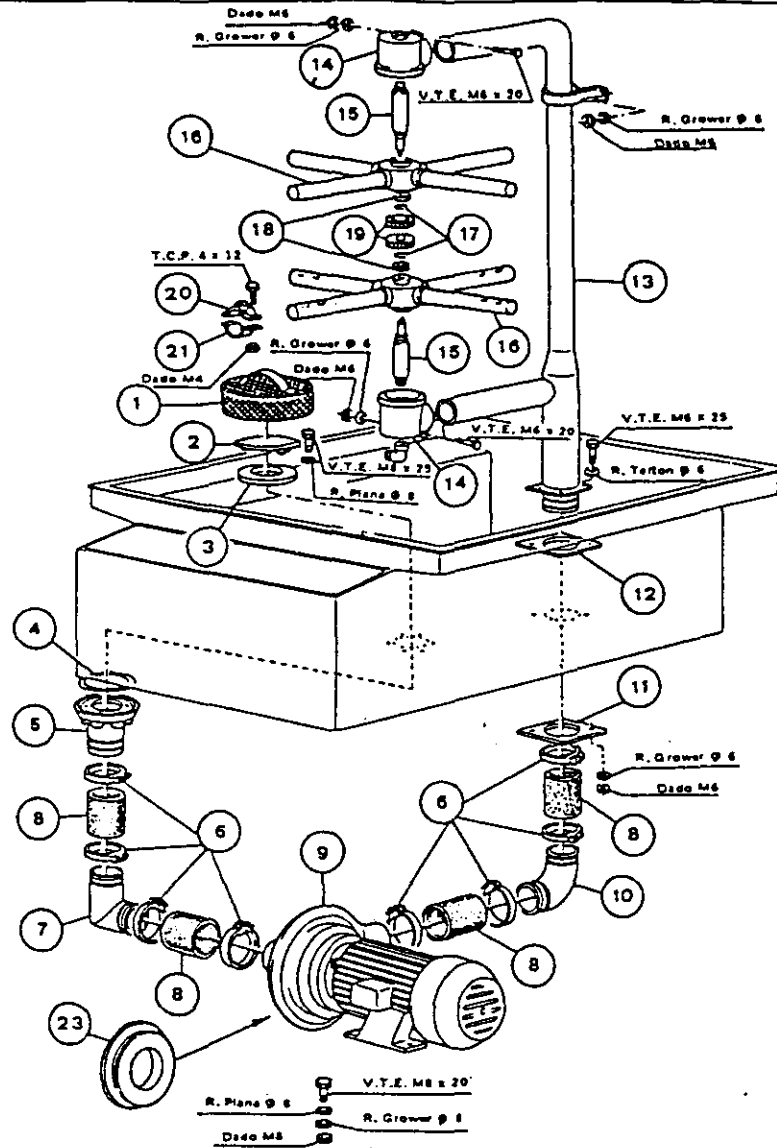
Posiz.	Codice - Code Code - Codex	Descrizione	Denomination	Description	Bezeichnung
1	320924	Portina lavapentole G66	Porte G66	Door G 66	Tür G66
2	450303	Maniglia per porte	Poignée	Handle	Griff
3	380703	Guida sinistra per porta G66 - 131	Rail gauche G66 - 131	Left hand door guide G 66 - 131	Linke Gleitführung G66 - 131
4	530206	Inserto per lavapentole G66 - 131	Intercalaire G66 - 131	Insert G 66 - 131	Einsatz G66 - 131
5	530204	Griglia lavapentole G66	Grille G66	Grate G 66	Gitter G66
6	391311	Molla per porta BB N 598	Ressort BB N 598	Door spring	Türfeder BB N 598
7	391309	Molla porta G240 BB SR 46	Ressort BB SR 46	Door spring	BB SR 46
8	330791	Squadretta aggancio molla	Equerre G66 - 131	Bracket	Winkel
9	321018	Traversa porta G66 lavap. G66 - 131	Support G66	Door protection	Türquerstreber G66
9	321018	Traversa porta G66	Support G66	Door protection	Türquerstreber G66
10	380704	Guida destra per porta G66 - 131	Rail droite G66 - 131	Right hand door guide G 66 - 131	Rechte Türführung G66 - 131
11	340131	Capot lavapentole G66	Capot G66	Hood G 66	Gehäuse G66
12	320709	Paraspruzzi per uscita vap. G66 - 131	Protection G66 - 131	Splash guard G 66 - 131	Spritzschutz G66 - 131
13	530202	Cestello G66	Panier G66	Basket insert G 66	Korbeinsatz G66
14	200402	Guarnizione piastra spugna	Yoint	Gasket	Flachdichtung



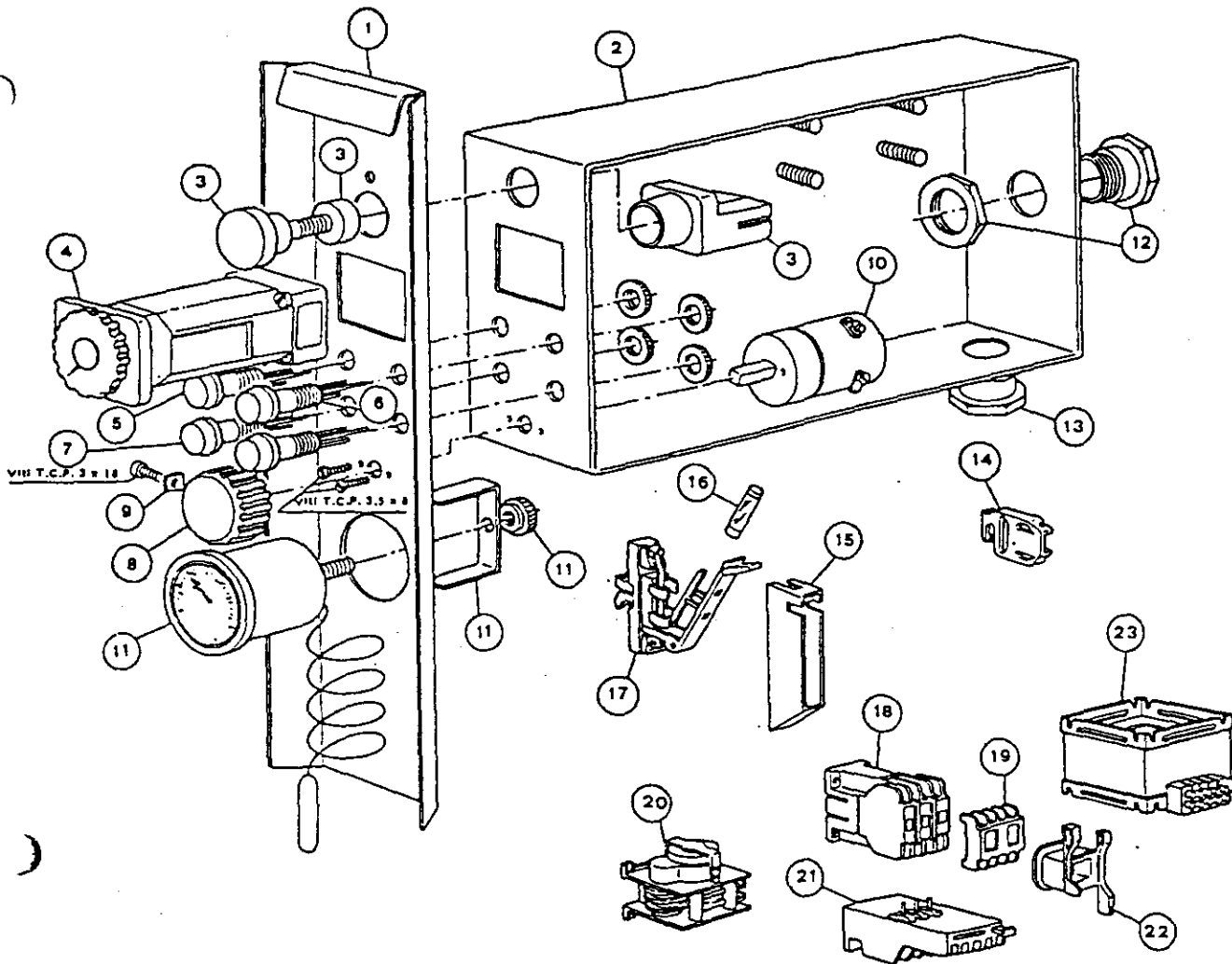
Pos.	N.Codice	Descrizione	Denomination	Description	Bezeichnung
1	350753	Squadretta fermo	Equerre	Bracket	Winkel
2	340274	Supporti per ruota	Support	Wheel support	Radhalterung
3	341009	Cavallotto	Contre-bride	Bracket	Klemmstück
4	170315	Ruota	Roue	Wheel	Rad
5	330816	Bussola	Douille	Bushing	Büchse
6	390305	Fune acciaio	Câble	Cable	Stahlseil
7	160704	Tappo	Bouchon	Plug	Propfen
8	321534	Contentitore	Container	Container	Behälter
9	340316	Paratia	Paroi	Air deflector	Luftleibblech



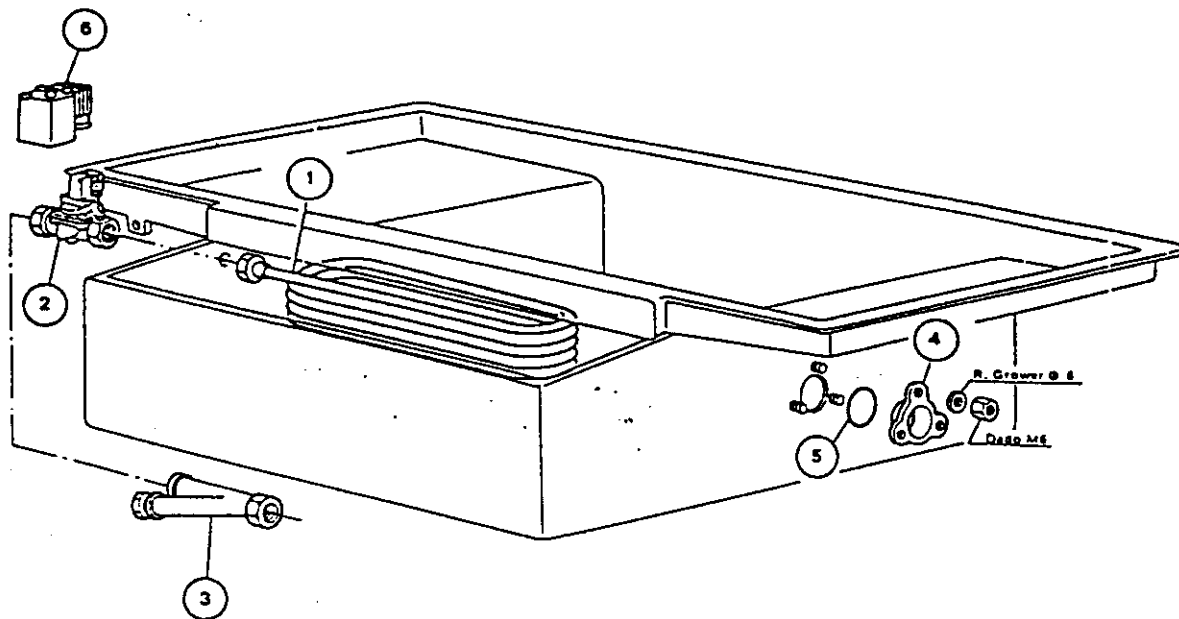
Posiz.	Codice - Code Code - Codex	Descrizione	Denomination	Description	Bezeichnung
1	380138	Dado di bloccaggio	Ecrou	Lock nut micro switch	Mutter Endschalter
2	200415	Guarnizione in dutral per trappole	Joint	Gasket	Dutral Dichtung Luftfalle
3	200431	Guarnizione di tenuta a labbro	Joint	Gasket	Lippenring
4	380139	Canotto micro G66 - 131	Protection micro G66 - 131	Micro switch connector	Durchführung Endschalter G66 - 131
5	330701	Squadretta per micro G66 - 131	Equerre micro G66 - 131	Micro switch bracket G 66 - 131	Endschalterwinkel G66 - 131
6	340488	Perno micro G66 - 131	Axe micro G66 - 131	Micro switch pin G 66	Endschalterstift G66 - 131
7	450905	Termometro capillare Mt 1,5	Thermometre Mt 1,5	Thermometer mt. 1,5	Kapillarthermometer Mt 1,5
8	380806	Troppopieno G131	Trop plein G131	Overflow tube G 131	Überfallrohr
9	270403	Piletta e ghiera 1" 1/2	Embout 1" 1/2	Outlet and lock nut 1" 1/2	Ablaufstutzen und Gewinding 1" 1/2
10	200410	Guarnizione piletta 1" 1/2	Joint 1" 1/2	Drain outlet washer	Dichtung Ablauf 1" 1/2
11	460506	Guarnizione 45 x 33 x 2 Amiantite	Joint 45 x 33 x 2	Asbestos gasket	Asbest Dichtung 45 x 33 x 2
12	160201	Codulo scarico risc. al presisc.	Vidange	Drain	Ablaufstutzen
13	280403	Ghiera ottagonale 1" 1/2	Embout 1" 1/2	Lock nut 1" 1/2	8 - Kautmutter 1" 1/2
14	460502	Guarnizione amiantite 30 x 21 x 2	Joint 30 x 21 x 2	Asbestos gasket	Asbest Dichtung 30 x 21 x 2
15	290105	Tappo TE 1/2" Ottone	Bouchon TE 1/2" laiton	Brass-plug 1/2"	MS - Profpen
16	270101	Controdado 1/2" esagono 30	Contre ecrous	Lock nut 1/2"	1/2" Gegenmutter Sechskant 30
17	450514	Gusina per termostato	Gainé thermostat	Thermostat shield	Schutzhülle Thermostat
18	161301	Trappola aria per pressostato	Trappe pressostat	Airtrap press. switch	Luftfalle Druckwächter
19	450115	Fascetta elastica	Collier	Clamp	Schelle
20	130604	Pressostato a livello 80	Pressostat niveau 80	Pressure switch	Druckwächter 80
21	350722	Squadretta pressostato	Equerre pressostat	Press. switch bracket	Druckwächterwinkel
22	330725	Squadretta unificata	Equerre	Bracket	Normwinkel
23	120312	Microinterruttore Crouzet	Micro interrupteur	Micro switch	Endschalter
24	200353	Tubo pressostato	Tuyau pressostat	Press. switch hose	Druckwächterschlauch
25	120501	Termostato	Thermostat	Thermostat	Thermostat



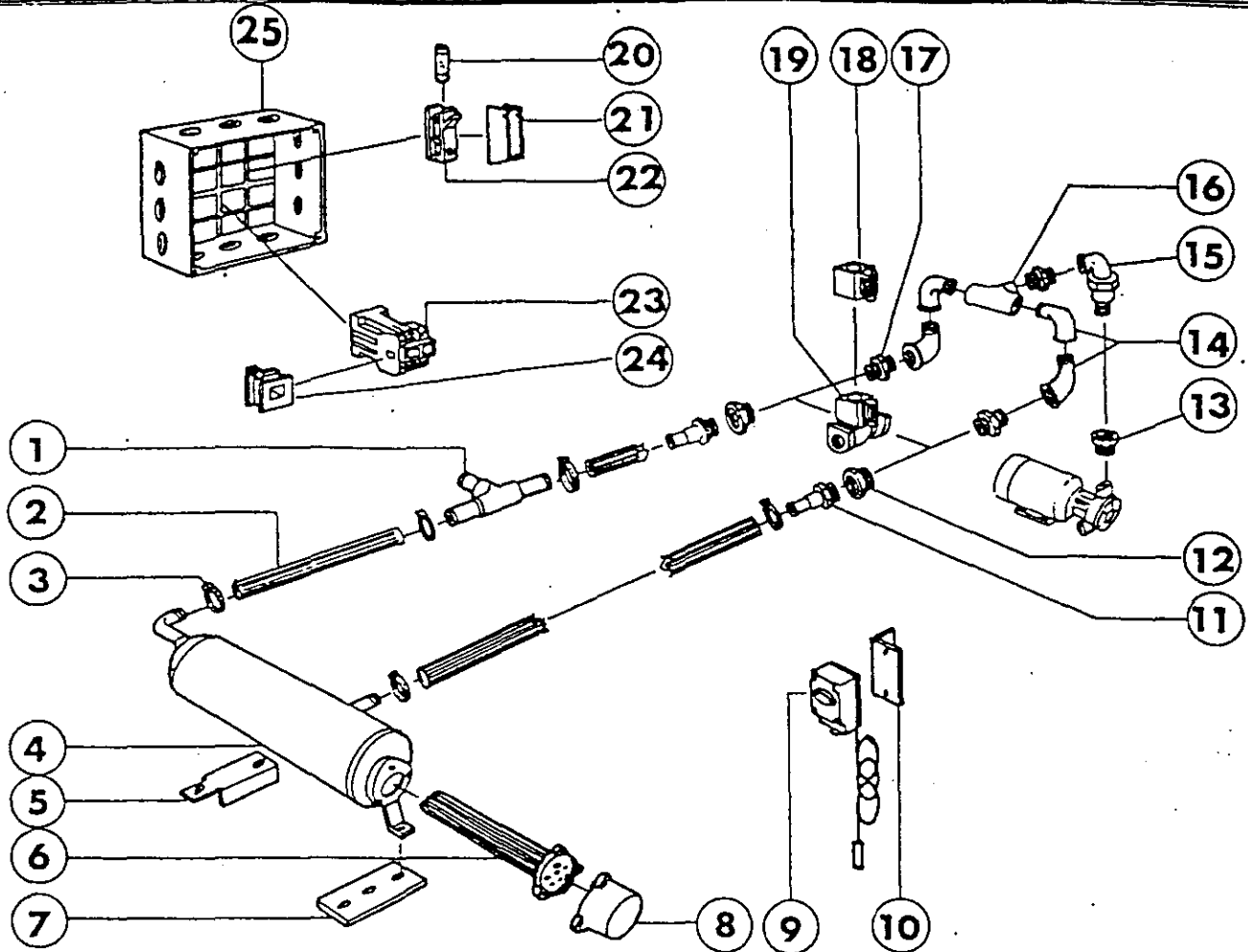
Posiz.	Codice - Code Code - Codex	Descrizione	Denomination	Description	Bezeichnung
1	330528	Filtro Ø 195	Filtre Ø 195	Strainer Ø 195	Filter Ø 195
2	191012	Deflettore aspirazione	Deflecteur	Channel	Deflektor
3	180204	Contro flangia Ø 130	Contre flasque Ø 130	Flange Ø 130	Gegenflansch Ø 130
4	200807	Anelli tenuta OR	OR	O-Ring	O - Ring
5	510301	Raccordo diritta aspirazione N	Raccord	Nipple	Rohrverbindung
6	450113	Fascetta norma S 82/15	Collier S 82/15	Clamp	Schelle S 82/15
7	400571	Gomito aspirazione	Coude aspiration	Suction hose	Saugstutzen
8	200112	Tubo gomma 75 x 83	Tuyau 75 x 83	Rubber hose 75x93	Gummischlauch 75 x 83
9	100382	Elettropompa destra Boverio HP 4 G66 - 131	Electro pompe HP 4 droite G66 - 131	Pump 4 HP right	Pumpe 4 PS rechts G66 - 131
10	400563	Gomito mandata G66 - 131	Coude G66 - 131	Discharge hose G 66 - 131	Druckstutzen G66 - 131
11	380907	Controflangia per colonna lav.	Contre flasque	Counterflange	Gegenflansch
12	200448	Guarnizione per tubo lav. lavap. G66 - 131	Joint G66 - 131	Gasket	Dichtung G66 - 131
13	420308	Colonna lavaggio G66 - 131	Colonne lavage G66 - 131	Standpipe G 66 - 131	Zuleitung G66 - 131
14	510280	Supporto mulinello	Support tourniquet	Wash arm support	Spülermauflage
15	340489	Alberino mulinello G66 - 131	Axe tourniquet G66 - 131	Spindle G 66 - 131	Welle G66 - 131
16	420505	Mulinello lavaggio G66 - 131	Tourniquet lavage G66 - 131	Wash arm G 66 - 131	Washarm G66 - 131
17	440816	Seeger inox Ø 48 UNI 3654	Seeger inox Ø 48 UNI 3654	Snap ring Ø 48	Seeger - Ring Ø 48 UNI 3654
18	160820	Rondella slittamento G66 - 131	Rondelle G66 - 131	Safety ring	Gleitring G66 - 131
19	510284	Ghiera mulinello lavaggio G66 - 131	Embont tourniquet G66 - 131	Threaded ring	Gewinding G66 - 131
20	170910	Ugello lavag. taglio assiale	Gicleur	Wash arm	Washdüse
21	180211	Controflangia ugello lavaggio	Contre flasque	Counterflange wash jet	Gegenflansch Waschdüse
22	630504	Guarnizione	Joint	Gasket	Dichtung



Posiz.	Codice - Code Code - Codex	Descrizione	Denomination	Description	Bezeichnung
1	460160	Pannello frontale portacomandi	Panneau frontal	Control panel	Schalttafel
2	321526	Cassetta elettrica G66	Boiter electrique G66	Control box G 66	Elektrik G66
3	130405	Pulsante a fungo marcia	Bouton marche	Machine "on"	Pilztaste "ein"
4	120216	Timer regolabile di lavaggio	Programmeur lavage	Timer	Zeitschaltwerk
5	130118	Lampada spia Rossa	Lampe témoin	Red light	Rote Kontrollampe
6	130117	Lampada spia Verde	Lampe témoin	Green light	Grüne Kontrollampe
7	130119	Lampada spia Gialla	Lampe témoin	Yellow light	Gelbe Kontrollampe
8	180111	Manopola Nera	Bouton	Black knob	Schaltknebel
9	310211	Dado quadro 3M	Ecrou M3	Lock nut M3	Vierkant mutter M3
10	120712	Interuttore generale	Interrupteur général	Main switch	Hauptschalter
11	450905	Termometro	Thermometre	Thermometer	Thermometer
12	150816	Passacavo 1" 1/2	Protection gaine 1" 1/2	Strain reliever	Kabeldurchlass 1" 1/2
13	150813	Passacavo 1"	Protection gaine 1"	Strain reliever	Kabeldurchlass 1"
14	150202	Morsettiere mm ² 16	Domino mm ² 16	Junction block	Klemmen 16 mm
15	150615	Custodie per portafusibili	Support fusibles	Fuseholder	Sicherungshalterungsabdeckung
16	130230	Fusibili 4 Amp.	Fusibles 4 A	Fuse 4 Amp.	Sicherungen 4 A
16	130234	Fusibili 12 Amp	Fusibles 12 A	Fuse 12 Amp.	Sicherungen 12 A
16	130235	Fusibili 16 Amp.	Fusibles 16 A	Fuse 16 Amp.	Sicherungen 16 A
17	150612	Portafusibili	Logement fusible	Fuse block	Sicherungshalterung
18	120428	Teleruttore 9 Amp.	Telerupteur 9 A	Contacteur 9 Amp.	Schütz 9 A
18	120429	Teleruttore 12 Amp.	Telerupteur 12 A	Contacteur 12 Amp.	Schütz 12 A
18	120430	Teleruttore 16 Amp.	Telerupteur 16 A	Contacteur 16 Amp.	Schütz 16 A
19	130904	Contatti per teleruttori	Contacts telerupteur	Contacts	Kontakte
20	120215	Timer risciacquo	Programmeur rinçage	Rinse timer	Nachspülzeitschwerk
21	120821	Termica 1 - 1,6	Thermique 1 - 1,6	Overload relay 1-1,6	Thermoauslöser
21	120822	Termica 1,6 - 2,5	Thermique 1,6 - 2,5	Overload relay 1,6-2,5	Thermoauslöser
21	180825	Termica 5,5 - 8	Thermique 5,5 - 8	Overload relay 5,5-8	Thermoauslöser
21	180826	Termica 10 - 13	Thermique 10 - 13	Overload relay 10-13	Thermoauslöser
22	630953	Bobina 24V - 9 e 12 Amp.	Bobine 24V - 9 et 12A	Coil 24V 9 and 12 Amp.	Spule 24V - 9 und 12A
22	630955	Bobina 24V - 16 - 25 Amp.	Bobine 24V - 9 - 25A	Coil 24V 9 and 25 Amp.	Spule 24V - 16 - 25A
23	120631	Trasformatore	Transformateur	Transformer	Transformator



Posiz.	Codice - Code Code - Codex	Descrizione	Denomination	Description	Bezeichnung
1	240716	Serpentina vapore	Serpentin	Steam coil	Dampfschlange
2	120107	Elettrovalvola L149 Vap.	Electrovanne L149	Solenoid valve L149	E-Ventil L149
3	310602	Filtro Juker 3/4"	Filtre Juker 3/4"	3/4" Strainer	1" Juker Filter
4	330910	Tappo	Bouchon	Plug	Propfen
5	200815	Guarnizione OR	O-Ring	O-Ring	O-Ring
6	630952	Bobina L149 - 24V	Bobine L149 - 24V	Coil L149	Spule L149 - 24V



Pos.	N.Codice	Descrizione	Denomination	Description	Bezeichnung
1	180403	Portagomma a T	Tetine	Hose barb	Anschluss
2	200113	Tubo gomma Ø 12x22	Durite	Rubber hose	Gummischlauch
3	450104	Fascetta Ø 16-28	Collier	Clamp	Schelle
4	330307	Boiler	Surchauffeur	Booster	Durchlauferhitzer
5	390629	Supporto posteriore	Support post.	Back support	Hinterer Support
6	110349	Resistenza 6 KW	Résistance	Heating element	Heizkörper
7	390628	Supporto anteriore	Support ant.	Front support	Vorderer Support
8	161102	Copriresistenza	Protection résist.	Element cover	Heizkörperschutz
9	120515	Termostato 30-90°C	Thermostat	Thermostat	Thermostat
10	350737	Squadretta termost.	Equerre	Bracket	Winkel
11	290410	Portagomma 1/2" M	Raccord	Hose barb	Anschluss
12	310302	Riduzione 3/4" M+1/2" F	Réduction	Reduction	Verminderung
13	300203	Riduzione 1" M+3/4" F	Réduction	Reduction	Verminderung
14	300410	Gomito 3/4" MF	Coude	Ell.	Kniestück
15	300612	Bocchettone curvo	Goulotte	Union ell	Kniestück
16	300903	TE 3/4" F	Raccord T	Tee	T-Stück
17	300210	Nipple 3/4" MM	Nipples	Nipple	Nippel
18	630944	Bobina 24 V	Bobine	Coil	Spule
19	120122	Elettrovalvola SIRAI	Electrovanne	Solenoid valve	E-Ventil
20	130246	Fusibile 12 A	Fusible 12 A	Fuse 12 A	Schmelzsicherung 12A
20	130248	Fusibile 20 A	Fusible 20 A	Fuse 20 A	Schmelzsicherung 20A
21	150615	Custodia	Boite	Box	Gehäuse
22	150612	Portafusibile	Porte fusible	Fuse holder	Sicherungshalterung
23	120428	Teleruttore 9 A	Contacteur	Contacteur	Schütz
24	630953	Bobina 24V - 9+12 A	Bobine	Coil	Spule
25	110149	Quadro completo	Boite electr.	Electrical box	Schaltkasten