

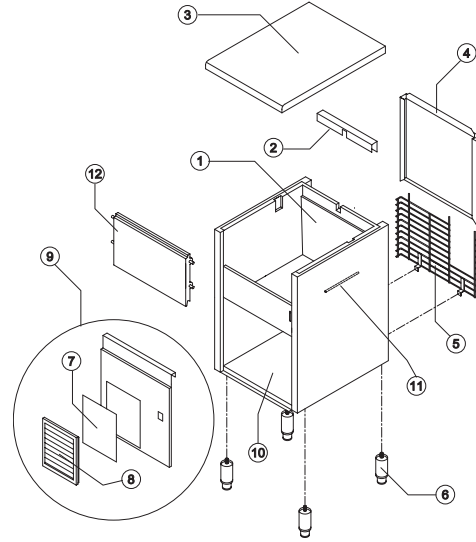


GB 1540

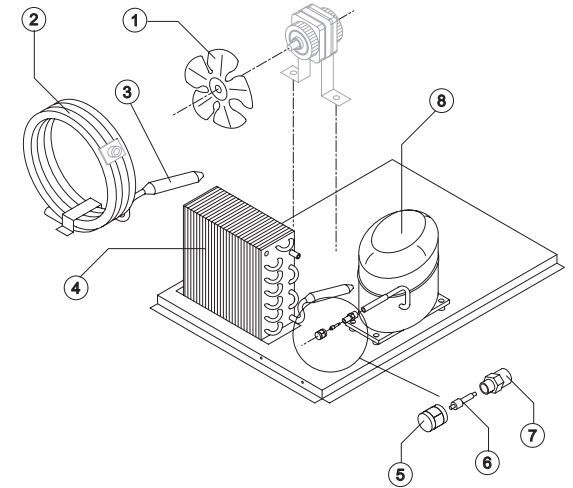
LIST OF THE EXPLODED VIEWS



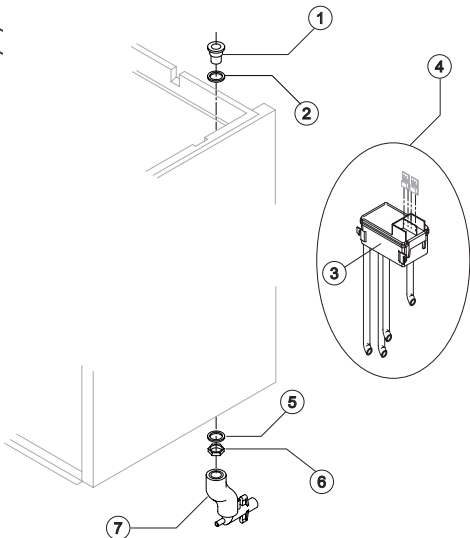
SHELL ASSY



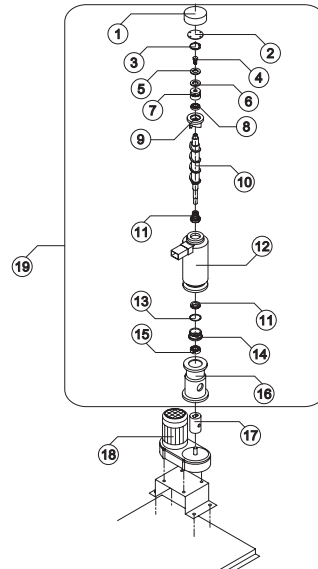
COOLING SYSTEM



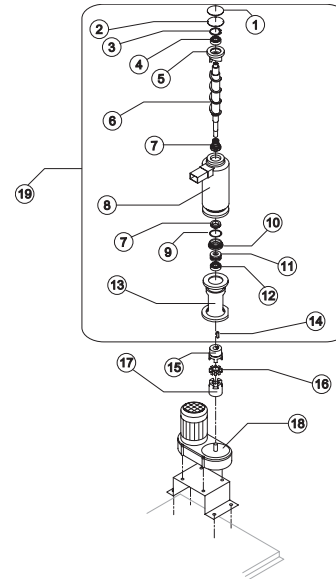
HYDRAULIC CIRCUIT



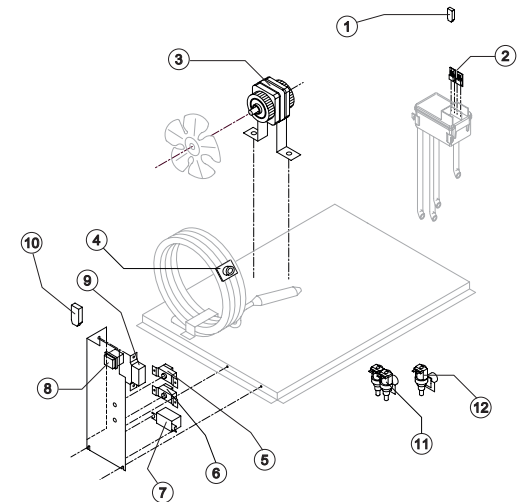
EVAPORATOR (From s/n.157641 up Today)



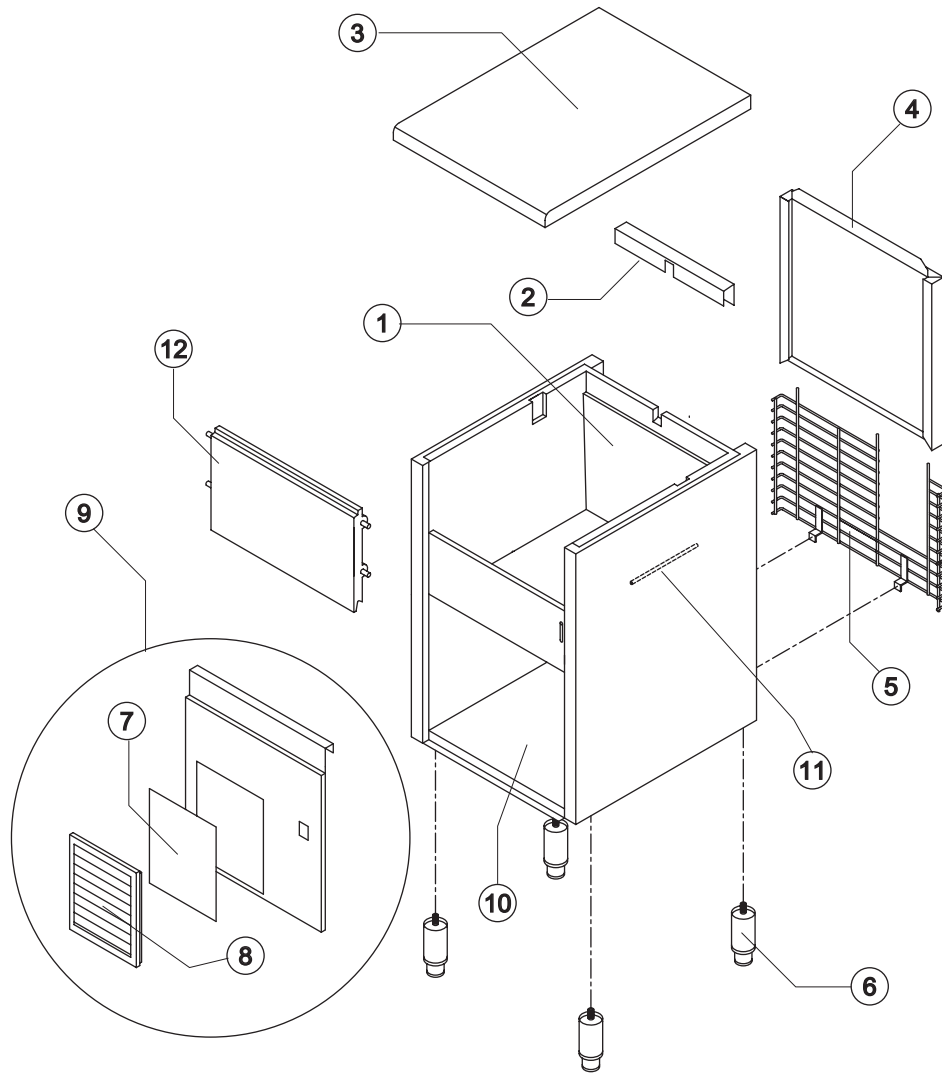
EVAPORATOR (Till s/n. 157640)



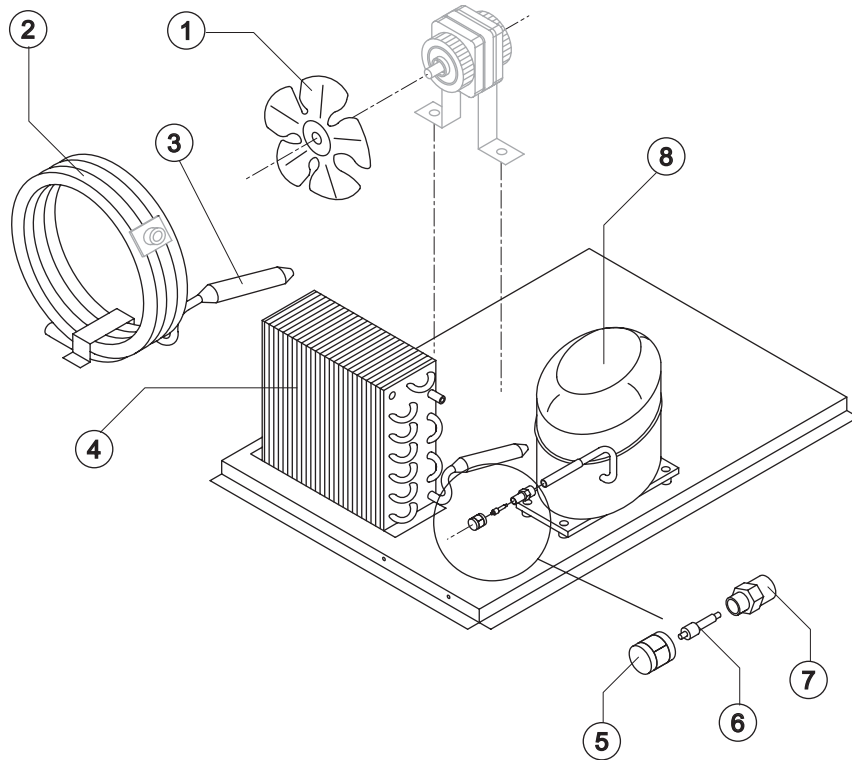
ELECTRIC PARTS



Rev. 1 - 12/6/2002



| Ref. | Spare Description | Code | |
|------|---------------------------------|------------------|--------|
| 1 | Foamed Cabinet Assy | C11097/E | |
| 2 | Cover for Ice Exit Passage | 22592 | |
| 3 | Top Assembly | C22690 | |
| 4 | Back Panel Assembly | C22226 | |
| 5 | Rear Grid | D12020 | |
| 6 | Stainless Steel Foot Adjustable | Current Version | 20613 |
| 6 | ABS Foot | Till s/n. 142485 | 10040 |
| 7 | Filtering Panel | | 18106 |
| 8 | Grid with Frame | | C10205 |
| 9 | Front Grid Panel | | C22509 |
| 10 | Base Plate | Current Version | 21284 |
| 10 | Base Plate | Till s/n. 142485 | C21044 |
| 11 | Bulbe Thermostat Tube | Current Version | 20522 |
| 11 | Bulbe Thermostat Tube | Till s/n. 95342 | 20017 |
| 12 | Door Assy | | C10275 |



Common Parts

| Ref. | Spare Description | Code |
|------|----------------------------|-------------|
| 3 | Molecular Drier | 14009 |
| 5 | Vacuum-Charge Valve Plug | 14006 |
| 6 | Vacuum-Charge Valve Body | 14005 |
| 7 | Vacuum-Charge Valve Device | 14007 |
| 8 | Compressor | See Table - |

Parts for Air-Cooled Version Only

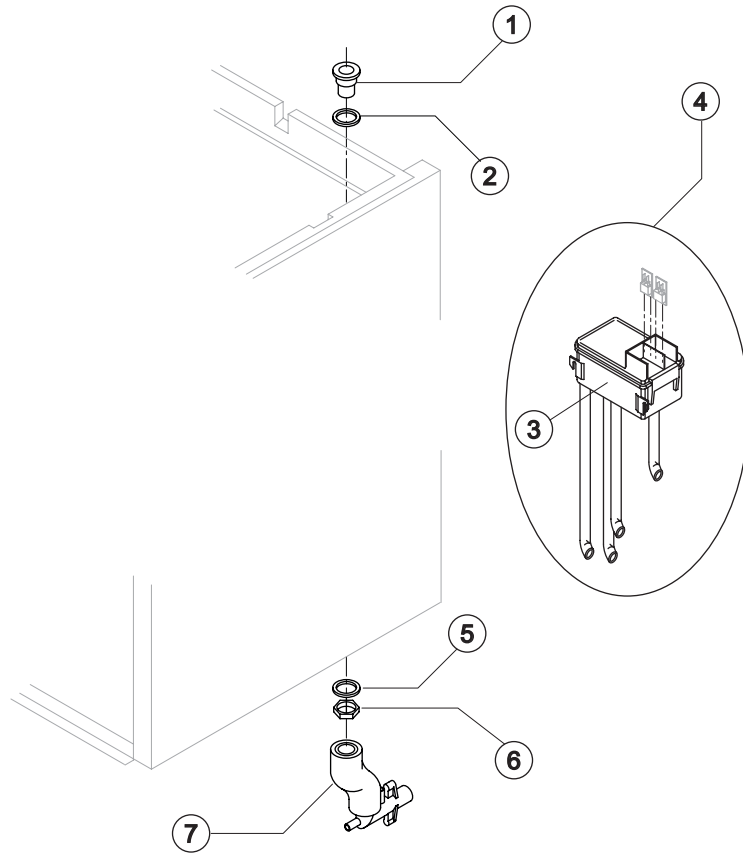
| Ref. | Spare Description | Code |
|------|---------------------|-----------------------|
| 1 | Suction Fan 254/31° | 20031 |
| 4 | Air Condenser | Current Version 20175 |
| 4 | Air Condenser | Till s/n.74774 20019 |

Parts for Water-Cooled Version Only

| Ref. | Spare Description | Code |
|------|-------------------|-------|
| 1 | Suction Fan | 10213 |
| 2 | Water Condenser | 14014 |

Ref. 8 - Compressor

| Tension | Code |
|----------------|-------|
| 220/240V 50 Hz | 23575 |
| 220/230V 60 Hz | 23578 |
| 110/115V 60 Hz | 23579 |



Common Parts

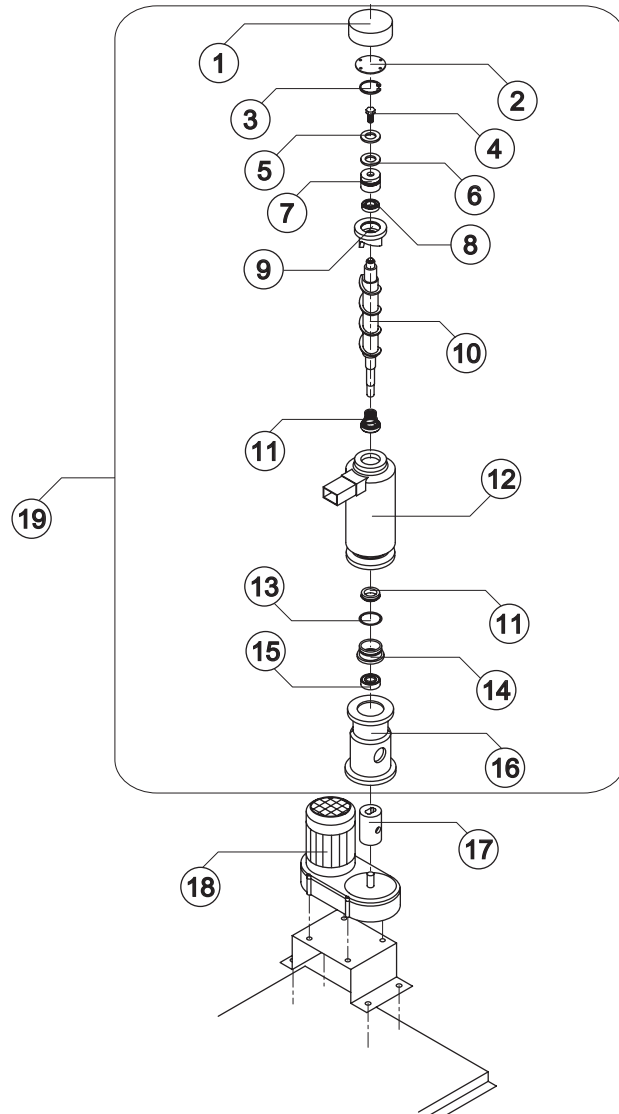
| Ref. | Spare Description | Code |
|------|-------------------------------|----------|
| 1 | Plastic Nipple Water Outlet | 10007 |
| 2 | Silicone Gasket | 13006 |
| 3 | Double Switch Basin | 10145 |
| 4 | Double Switch Basin Assembly | C10165GB |
| 5 | Semirigid Polyethylene Gasket | 13007 |
| 6 | Bin Discharge Nut | 10096 |

Parts for Air-Cooled Version Only

| Ref. | Spare Description | Code |
|------|---------------------|--------|
| 7 | Discharges Manifold | C10235 |

Parts for Water-Cooled Version Only

| Ref. | Spare Description | Code |
|------|---------------------|--------|
| 7 | Discharges Manifold | C10240 |

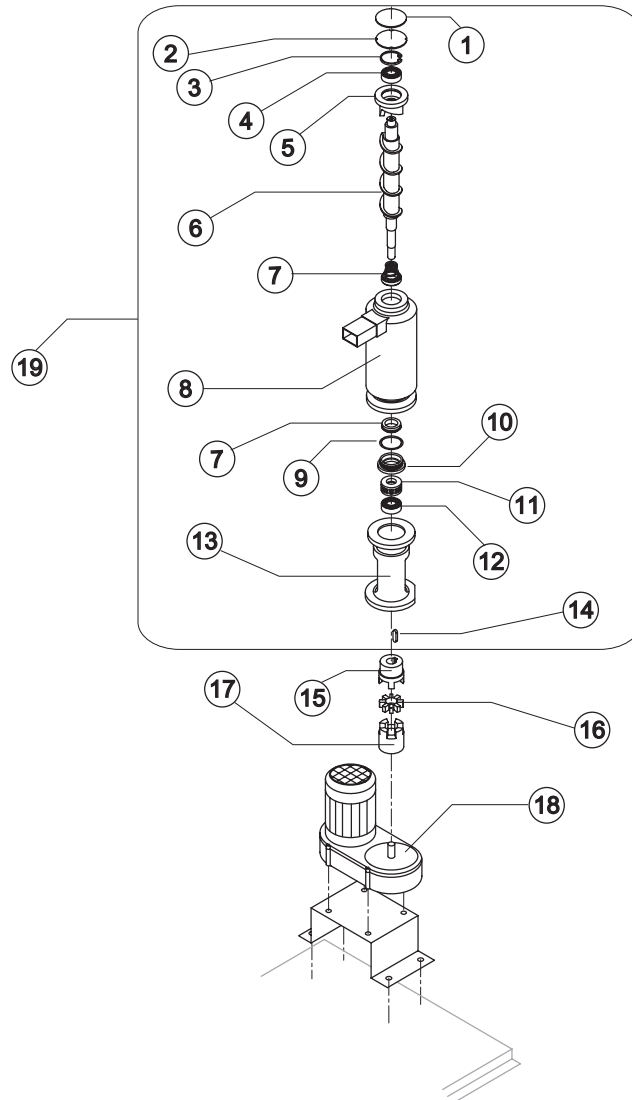


| Ref. | Spare Description | Code |
|------|-----------------------|------------------------|
| 1 | Insulating Top Panel | 18164 |
| 2 | Closing Disk | 22825 |
| 3 | Seeger | 20043 |
| 4 | INOX Screw | Current Version 20663 |
| 4 | INOX Screw | Till s/n. 161504 15093 |
| 5 | Shimming Disk | 22826 |
| 6 | Self-Lubricating Disk | 20631 |
| 7 | INOX Bearing | 20623 |
| 8 | Seal Ring | 20632 |
| 9 | Ice Breaker | 20626 |
| 10 | Auger with Screw | C20625 |
| 11 | Ceramic Seal | 20633 |
| 12 | Foamed Evaporator | C11107 |
| 13 | OR Gasket 3162 NBR70 | 20429 |
| 14 | Reduction Ring | 20624 |
| 15 | INOX Bearing | 20045 |
| 16 | Flange | 20629 |
| 17 | Joint | D20630 |
| 18 | Gearmotor | See Table - |
| 19 | Evaporator Assy | C11110 |

Ref. 18 - Gearmotor

| Tension | Code |
|----------------|-------|
| 220/240V 50 Hz | 23532 |
| 220/230V 60 Hz | 23532 |
| 110/115V 60 Hz | 23556 |

Rev. 1 - 12/6/2002



| Ref. | Spare Description | Code |
|------|--------------------------------|-----------|
| 1 | Insulating Panel | 18116 |
| 2 | Closing Disk | 22588 |
| 3 | Seeger Ring | 20434 |
| 4 | Stainless Steel Upper Bearing | 20433 |
| 5 | Ice Breaker | 20440 |
| 6 | Auger | 20439 |
| 7 | Ceramic Seal | 20428 |
| 8 | Foamed Evaporator | C11094 |
| 9 | OR Gasket 3162 NBR70 | 20429 |
| 10 | Reduction Ring | 20427 |
| 11 | Stainless Steel Thrust Bearing | 20049 |
| 12 | INOX Bearing | 20045 |
| 13 | Machined Joint Flange | E20438 |
| 14 | Key | 20431 |
| 15 | Semi-Joint | D20430 |
| 16 | Vibration-Damping Elastomer | 20455 |
| 17 | Semi-Joint | D20454 |
| 18 | Gearmotor | See Table |
| 19 | Evaporator Assy | C11095 |

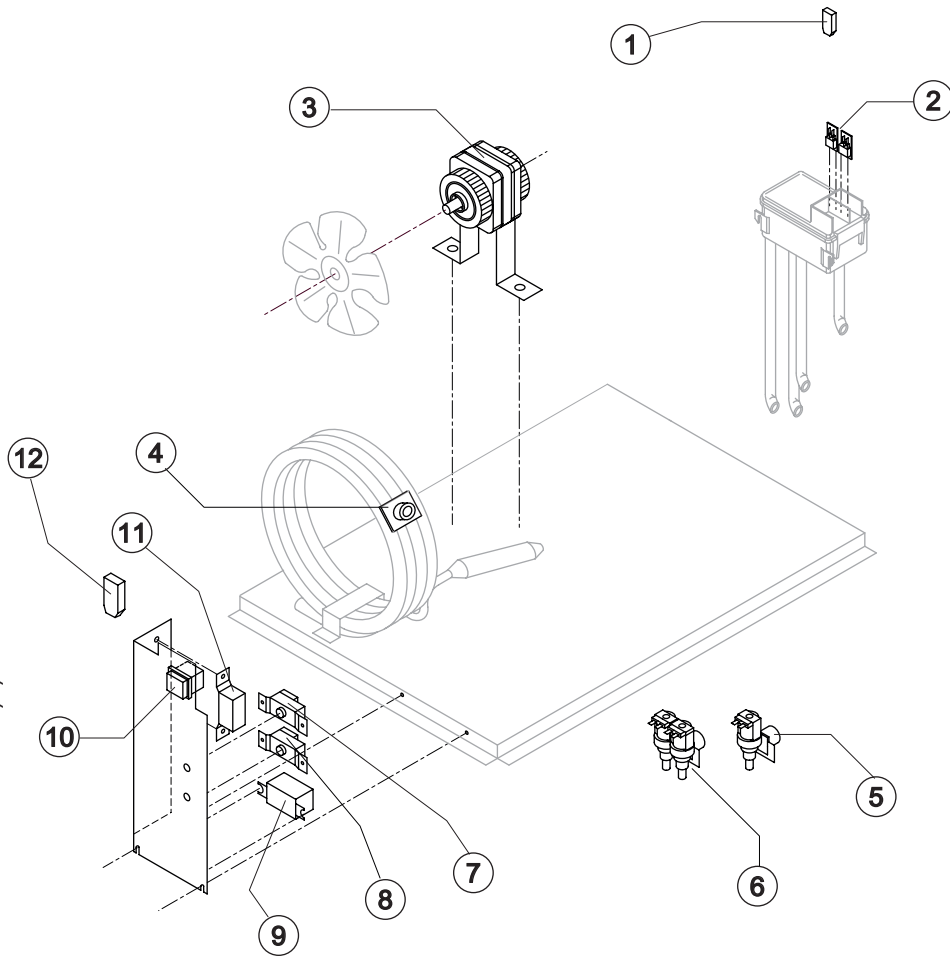
Ref. 18 - Gearmotor

| Tension | Code |
|----------------|-------|
| 220/240V 50 Hz | 23532 |
| 220/230V 60 Hz | 23532 |
| 110/115V 60 Hz | 23556 |



GB 1540

ELECTRIC PARTS



Common Parts

| Ref. | Spare Description | Code |
|------|---|-----------|
| 1 | Anti Radio Interference Filter 220/240V 50 Hz | 23457 |
| 2 | Microswitch | 23055 |
| 3 | Fan Motor | See Table |
| 7 | Bin Thermostat | 23005 |
| 8 | Evaporator Thermostat | 23034 |
| 9 | Relay | See Table |
| 10 | Green Light Switch | 23327 |
| 11 | Condenser Pressure Switch | 23175 |
| 12 | Anti Radio Interference Filter 220/240V 50 Hz | 23459 |

Parts for Air-Cooled Version Only

| Ref. | Spare Description | Code |
|------|------------------------|-----------|
| 5 | Inlet Watervalue 1 Way | See Table |

Parts for Water-Cooled Version Only

| Ref. | Spare Description | Code |
|------|-------------------------|-----------|
| 4 | Safety Thermostat | C23114 |
| 6 | Inlet Watervalue 2 Ways | See Table |

Ref. 3 - Fan Motor

| Tension | Air | Water |
|----------------|-------|-------|
| 220/240V 50 Hz | 23067 | 23029 |
| 220/230V 60 Hz | 23580 | 23029 |
| 110/115V 60 Hz | 23393 | 23265 |

Ref.5 - Inlet Watervalue 1 Way

| Tension | Code |
|----------------|-------|
| 220/240V 50 Hz | 23115 |
| 220/230V 60 Hz | 23115 |
| 110/115V 60 Hz | 23410 |

Ref.6 - Inlet Watervalue 2 Ways

| Tension | Code |
|----------------|-------|
| 220/240V 50 Hz | 23010 |
| 220/230V 60 Hz | 23010 |
| 110/115V 60 Hz | 23261 |

Ref. 9 - Relay

| Tension | Code |
|----------------|-------|
| 220/240V 50 Hz | 23190 |
| 220/230V 60 Hz | 23190 |
| 110/115V 60 Hz | 23557 |

Rev. 1 - 12/6/2002