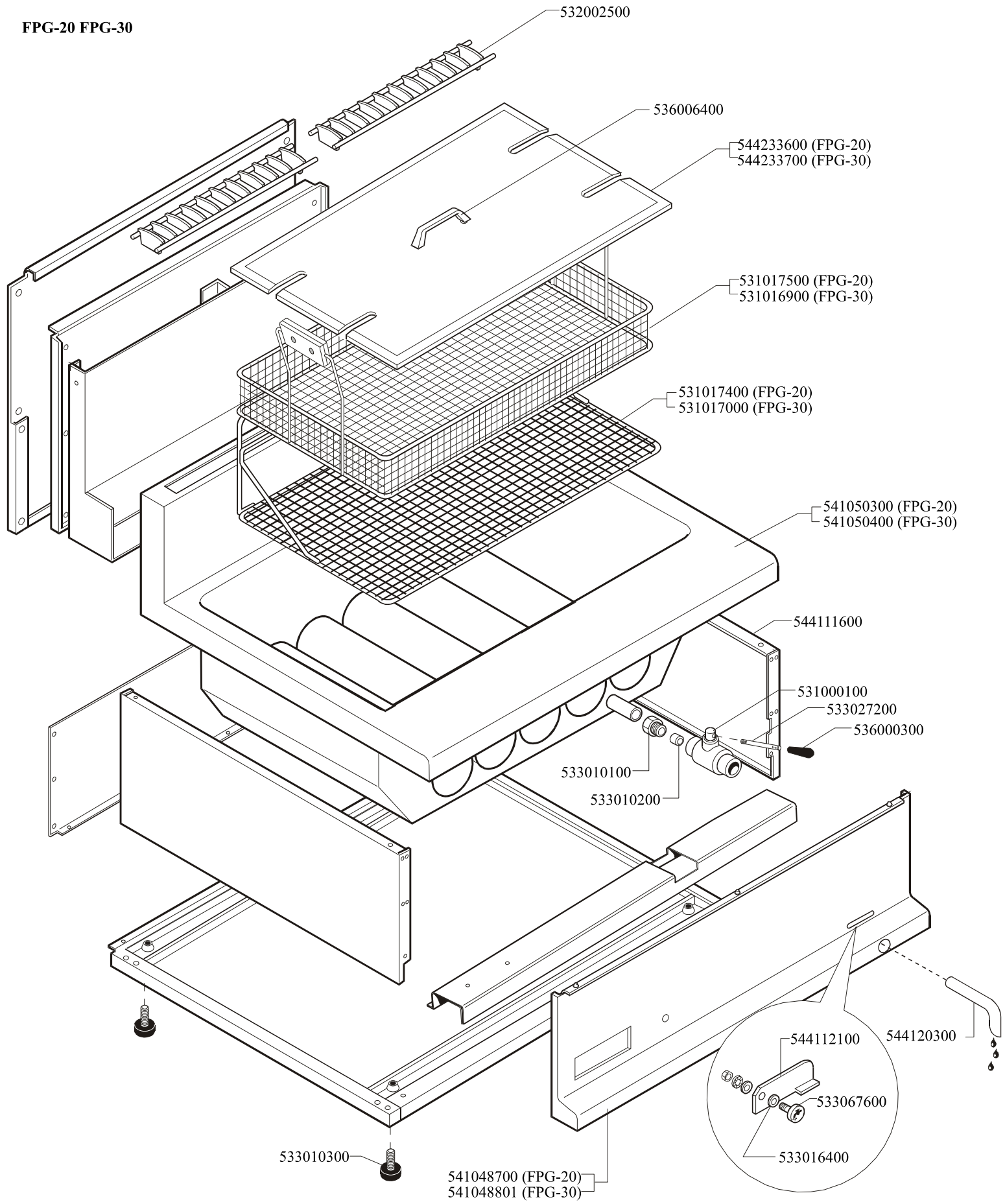
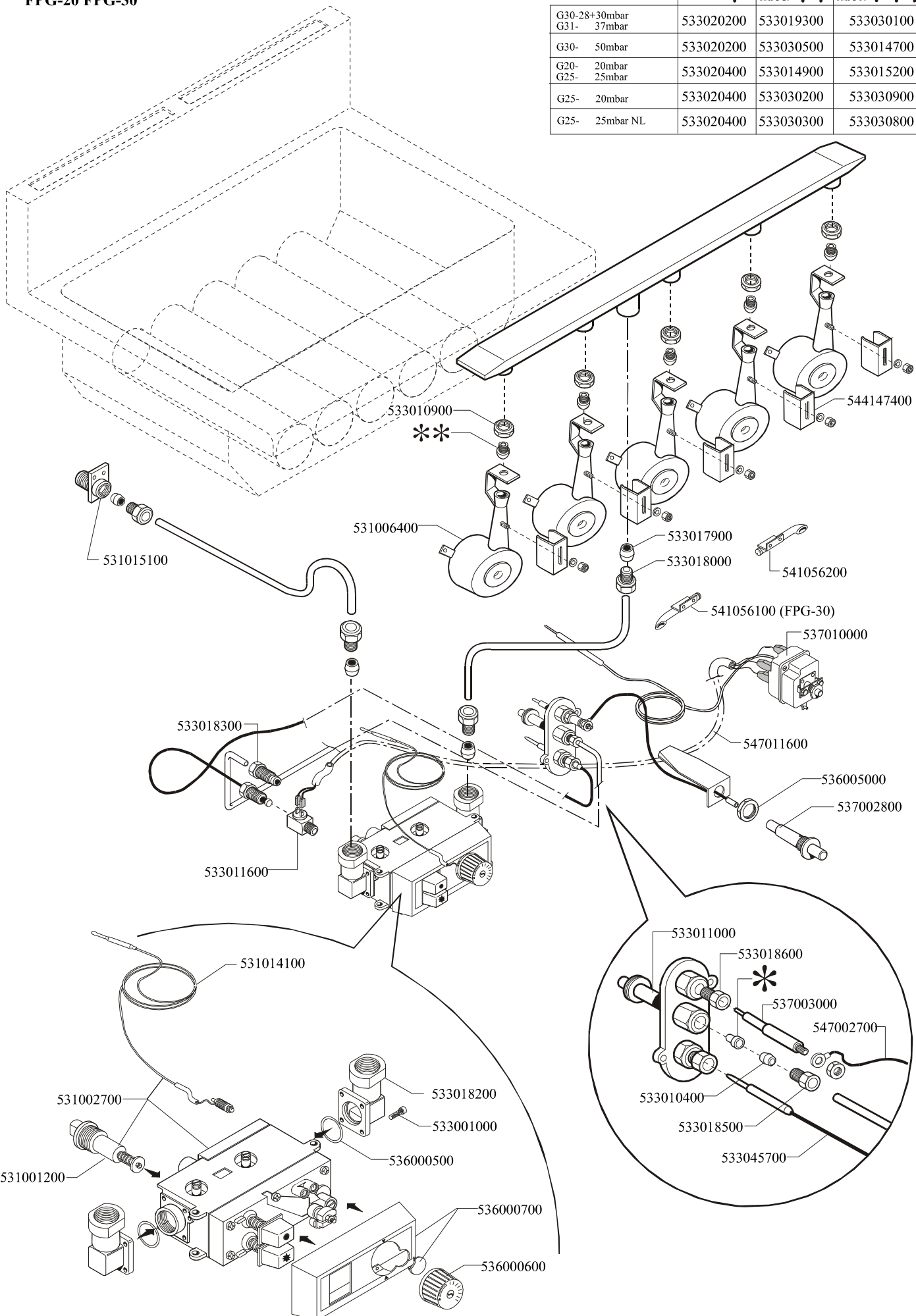


FPG-20 FPG-30



FPG-20 FPG-30

	*	FPG-20 FMPG-20	**	FPG-30 FMPG-30	**
G30-28+30mbar G31- 37mbar		533020200		533019300	533030100
G30- 50mbar		533020200		533030500	533014700
G20- 20mbar G25- 25mbar		533020400		533014900	533015200
G25- 20mbar		533020400		533030200	533030900
G25- 25mbar NL		533020400		533030300	533030800



Page	Pos	Code	Description
001		532002500	GRID FOR PIPE 400 FMG
001		536006400	BLACK HANDLE 65/FE/FG
001		544233600	TANK LID FPG/FPE-20
001		531017500	FRYER BASKET 60 465X350X80H FPG/E20
001		531017400	TANK FILTER/BASKET SUPPORT FPG-20
001		541050300	UPPER PLATE FPG-20
001		544111600	SIDE PANEL 700
001		531000100	DRAIN COCK 3/4"
001		533027200	HANDLE FOR DRAIN COCK 3/4"G FG
001		536000300	FIXED GRIP D.15*25*M6
001		533010100	3/4 D. 18 PIPE UNION
001		533010200	BICONE 18S
001		544120300	DRAIN PIPE 22 FOR COCK 3/4"G
001		544112100	COCK FIXING BRACKET FG-10
001		533067600	PIN FOR GRADUATED COCK BUSHING
001		533016400	COCK BUSHING
001		541048700	CONTROL PANEL FPG-20
001		533010300	ADJUSTABLE FOOT M10*20 D.23
002		544147400	AIR ADJUSTMENT BUSHING FMG-FQ
002		533010900	NUT M14*1 H.4
002		531006400	FRYER BURNER FQ-61G
002		531015100	FITTING 1/2"G - 3/8" G
002		533018300	FITTING WITH BICONE 6 M10*1
002		533017900	BICONE D.12
002		533018000	ELBOW FOR BICONE D.12 3/8 RS L20
002		541056200	RIGHT IGNITION TUBE FP-62G
002		537010000	SAFETY THERMOSTAT 220°C SINGLEPHASE
002		536005000	NUT M18 FOR PIEZOELECTRIC IGNITION
002		537002800	PIEZOELECTRIC IGNITION M18
002		533011000	PILOT BURNER 3 FLAMES 320
002		533018600	PLUG FITTING
002		537003000	PLUG M4 - LONG ELECTRODE
002		547002700	HIGH-VOLTAGE CABLE L=500
002		533010400	BICONE D.6
002		533018500	FITTING FOR BICONE D.6 M10*1
002		533067200	THERMOCOUPLE 220+500 M9*1 CUT-OFF
002		531014100	VALVE CAPILLARY PROBE FOR FG §6
002		531002700	MINISIT VALVE 100-190°C FQ/FG
002		531001200	MAGNET AC/2-MINISIT
002		533018200	ELBOW OR GJ 3/8
002		533001000	SCREW TCB C/CC M4X16
002		536000500	O-RING FOR MINISIT FITTING
002		536000700	PLASTIC COVER FOR MINISIT + SCREW
002		533011600	THERMOCOUPLE CUT-OFF M9*1-F9*1
002		547011600	ELECTRIC SAFETY WIRE
002		536000600	BLACK LHD KNOB OP. FOR MINISIT
002		533020200	PILOT JETS 0160 FOR LPG §30
002		533019300	NOZZLE §100 G-FQ5 F-CW
002		533030500	NOZZLE §90 CH12X14 G30/CE
002		533020400	NOZZLE 0160 (NATURAL GAS) 51
002		533014900	NOZZLE §150 CH12*14 F-FQ5 L-FQ6

Page	Pos	Code	Description
002		533030200	NOZZLE §170 CH12*14 MH-FG L-FP/CW
002		533030300	NOZZLE §160 CH12*14 M-FPG