

# POT WASHER

SIMPLE BODY VERSION  
ELECTRONICAL SWITCHES  
LOWER AND UPPER WASHING

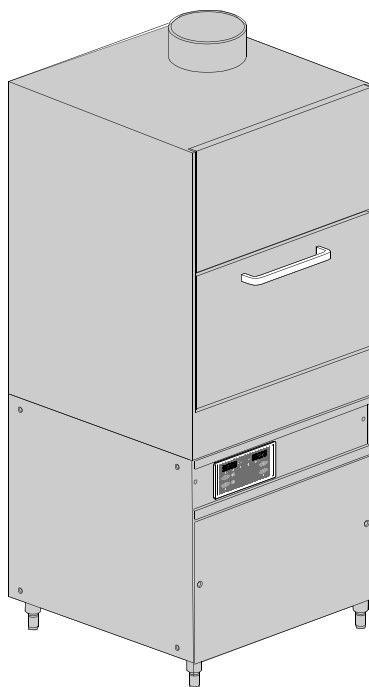
TYPE: 18ER

Accessories  
BOOSTER PUMP  
DVGW  
DETERGENT DISPENSER  
DRAIN PUMP

---

## Service Manual

---





## 1. Spare parts

General body parts.....	7
Lockup system .....	9
LP2E Control panel and switches.....	11
Electric control components.....	13
Solenoid valve group .....	15
Booster pump.....	17
DVGW .....	19
Rinse aid dispenser group.....	21
Boiler group .....	23
3 ways connection .....	25
Wash pump .....	27
Dosing detergent group.....	29
Dosing detergent group.....	31
Drain pump group.....	33
Pressure switch group with air trap ...	35
Turret group with rotating arms .....	37



## 1.1 Voltage codes

Voltage	Voltage code
A	3/N/PE~400/230V 50Hz
B	~250V 16A 50Hz
C	3/N/PE~380/220V 50Hz
D	3/PE~200V 50-60Hz
F	2/PE 220-240V 50Hz
G	3/N/PE~415/240V 50Hz
H	3/PE~230V 50Hz
I	3/PE~220V 60Hz
J	3/PE~380 50Hz
K	3/PE~400V 50Hz
L	3/PE~415V 50Hz
M	3/PE~440V 60Hz
N	3/PE~460V 60Hz
O	3/PE~480V 60Hz
P	1/N/PE~220-240V 50Hz
R	2/PE~220-230V 60Hz
S	3/N/PE~400/230V 50Hz
T	3/PE~230V 60Hz
U	1/N/PE~100V 50-60Hz

## 1.2 Product codes

Product code	Full name
Model codes	
mc	SIMPLE BODY VERSION
e	ELECTRONICAL SWITCHES
uw	LOWER AND UPPER WASHING
Type codes	
18ER	18ER
Accessory codes	
bp	BOOSTER PUMP
dvgw	DVGW
dd	DETERGENT DISPENSER
dp	DRAIN PUMP



## Spare parts

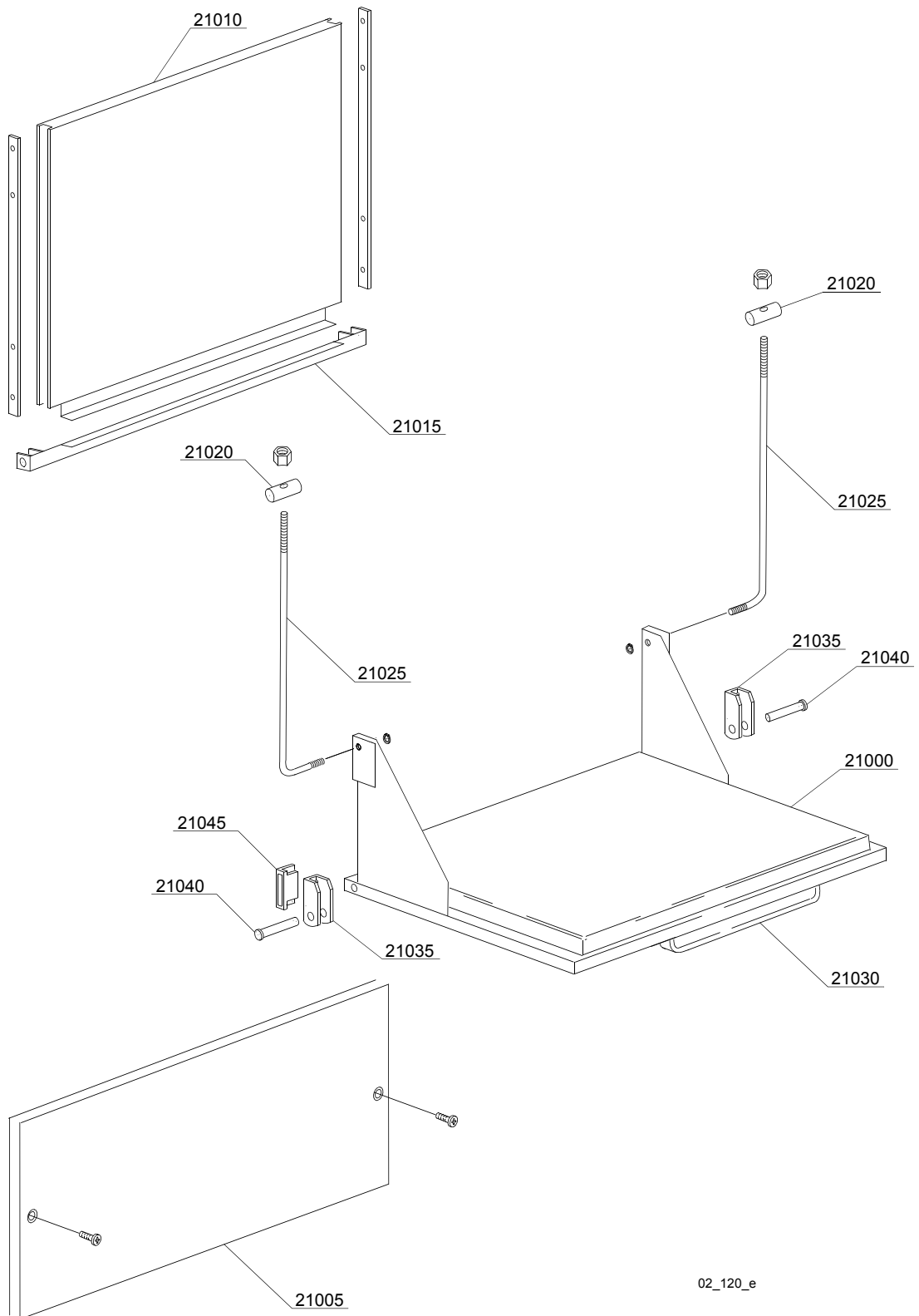
ID	P-code	Type	Date from	Date to	Accessory	Description
<b>Module:General body parts</b>						
20800	88907	18ER				Back panel
20805	80901	18ER				Complete structure
20810	11600002	18ER				Flange O-ring
20815	11600019	18ER				Terminal overflow pipe
20820	80936	18ER				Right splash guard
20825	80937	18ER				Left splash guard
20830	80116	18ER				Foot 2" M65
20835	80226	18ER				Overflow pipe
20840	15613	18ER				Elbow 1¼"
20845	30001010	18ER				Heating element 6 kW
20845	30001011	18ER				Heating element 9 kW
20845	30001011/C	18ER				9KW 254/440V heating element
20850	80931	18ER				Chimney splash guard
20855	80900	18ER				Tank
20860	80904	18ER				Frame base
20865	80907	18ER				Right side panel
20870	80908	18ER				Left side panel
20875	80935	18ER				Upper chimney
20880	80910	18ER				Right internal slide
20885	80911	18ER				Left internal slide
20890	80930	18ER				Sleeper holder-filter
20895	80720	18ER				Suction filter
20900	80721	18ER				Strainer plate
20905	88120	18ER				Sensor holder
20910	88120/A	18ER				Reed spacer
20915	2000309	18ER				Sensor
20920	10200171	18ER				Gasket 17x25x2
20925	22214	18ER				Nut

mc=SIMPLE BODY VERSION, em=ELECTROMECHANICAL SWITCHES, e=ELECTRONICAL SWITCHES,  
uw=LOWER AND UPPER WASHING

18ER=18ER

bp=BOOSTER PUMP, dvgw=DVGW, dd=DETERGENT DISPENSER, dp=DRAIN PUMP

A=3/N/PE~400/230V 50Hz, B=~250V 16A 50Hz, C=3/N/PE~380/220V 50Hz, D=3/PE~200V 50-60Hz, F=2/PE 220-240V 50Hz, G=3/N/PE~415/240V 50Hz, H=3/PE~230V 50Hz, I=3/PE~220V 60Hz, J=3/PE~380 50Hz, K=3/PE~400V 50Hz, L=3/PE~415V 50Hz, M=3/PE~440V 60Hz, N=3/PE~460V 60Hz, O=3/PE~480V 60Hz, P=1/N/PE~220-240V 50Hz, R=2/PE~220-230V 60Hz, S=3/N/PE~400/230V 50Hz, T=3/PE~230V 60Hz, U=1/N/PE~100V 50-60Hz



02\_120\_e

## Spare parts

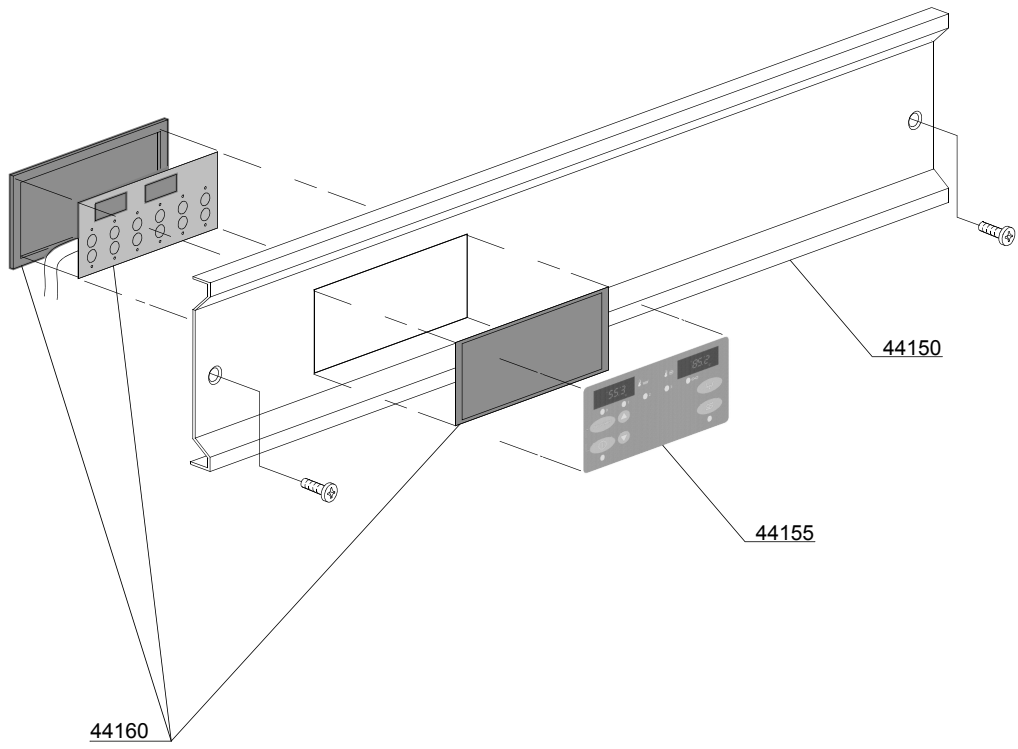
ID	P-code	Type	Date from	Date to	Accessory	Description
<b>Module: Lockup system</b>						
21000	80903	18ER				Lower door
21005	80906	18ER				Front panel
21010	80902	18ER				Upper door
21015	80938	18ER				Levers support
21020	22219	18ER				Pin
21025	22220	18ER				Door rod
21030	80750	18ER				Handle
21035	22206/B	18ER				Door hinge
21040	22220/A	18ER				Pin for door
21045	80232	18ER				Door magnet

mc=SIMPLE BODY VERSION, em=ELECTROMECHANICAL SWITCHES, e=ELECTRONICAL SWITCHES,  
uw=LOWER AND UPPER WASHING

18ER=18ER

bp=BOOSTER PUMP, dvgw=DVGW, dd=DETERGENT DISPENSER, dp=DRAIN PUMP

A=3/N/PE~400/230V 50Hz, B=~250V 16A 50Hz, C=3/N/PE~380/220V 50Hz, D=3/PE~200V 50-60Hz, F=2/PE 220-240V 50Hz, G=3/N/PE~415/240V 50Hz, H=3/PE~230V 50Hz, I=3/PE~220V 60Hz, J=3/PE~380 50Hz, K=3/PE~400V 50Hz, L=3/PE~415V 50Hz, M=3/PE~440V 60Hz, N=3/PE~460V 60Hz, O=3/PE~480V 60Hz, P=1/N/PE~220-240V 50Hz, R=2/PE~220-230V 60Hz, S=3/N/PE~400/230V 50Hz, T=3/PE~230V 60Hz, U=1/N/PE~100V 50-60Hz



03\_049\_e

## Spare parts

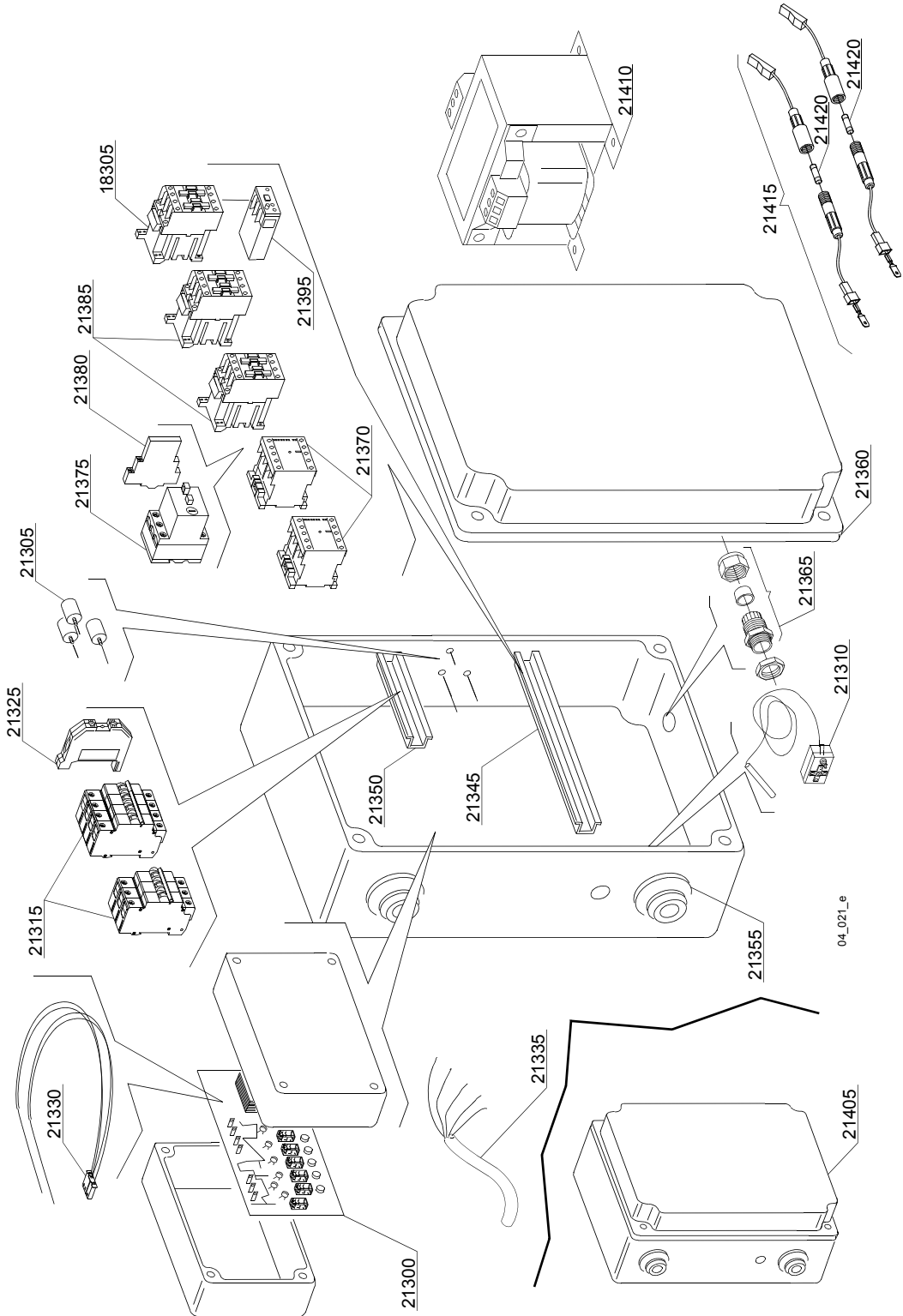
ID	P-code	Type	Date from	Date to	Accessory	Description
<b>Module:LP2E Control panel and switches</b>						
44150	80909	18ER				Stainless steel control panel
44155	50571	18ER			dp	Silkscreen processed grill membrane push button-driven dp+ws
44155	50572	18ER				Silkscreen processed grill membrane push button-driven
44155	50575	18ER			dp	Neutral Silkscreen processed grill membrane push button-driven dp+ws
44155	50576	18ER				Neutral Silkscreen processed grill membrane push button-driven
44155	50578	18ER			dp	Silkscreen processed grill membrane push button-driven dp+ws
44155	50579	18ER				Silkscreen processed grill membrane push button-driven
44155	50577	18ER			dp	Bobek Silkscreen processed grill membrane push button-driven dp+ws
44160	50570	18ER				Complete membrane push button-driver
44160	50570/A	18ER				LP Complete membrane push button-driver L=1500

mc=SIMPLE BODY VERSION, em=ELECTROMECHANICAL SWITCHES, e=ELECTRONICAL SWITCHES,  
uw=LOWER AND UPPER WASHING

18ER=18ER

bp=BOOSTER PUMP, dvgw=DVGW, dd=DETERGENT DISPENSER, dp=DRAIN PUMP

A=3/N/PE~400/230V 50Hz, B=~250V 16A 50Hz, C=3/N/PE~380/220V 50Hz, D=3/PE~200V 50-60Hz, F=2/PE 220-240V 50Hz, G=3/N/PE~415/240V 50Hz, H=3/PE~230V 50Hz, I=3/PE~220V 60Hz, J=3/PE~380 50Hz, K=3/PE~400V 50Hz, L=3/PE~415V 50Hz, M=3/PE~440V 60Hz, N=3/PE~460V 60Hz, O=3/PE~480V 60Hz, P=1/N/PE~220-240V 50Hz, R=2/PE~220-230V 60Hz, S=3/N/PE~400/230V 50Hz, T=3/PE~230V 60Hz, U=1/N/PE~100V 50-60Hz



## Spare parts

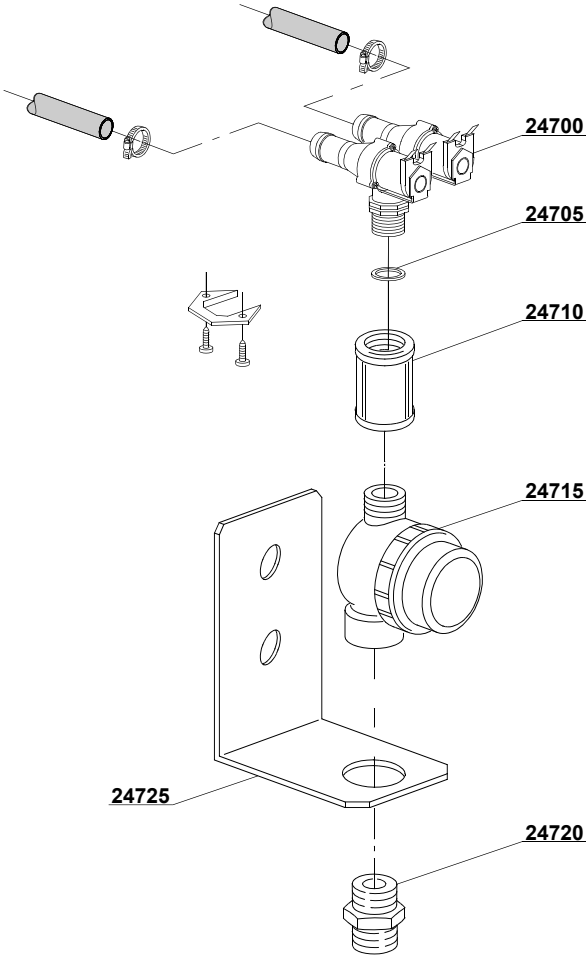
ID	P-code	Type	Date from	Date to	Accessory	Description
<b>Module:Electric control components</b>						
21300	50556	18ER				Timer
21305	15149	18ER				Filter F3
21305	15187	18ER				Low noise filter
21310	2000430	18ER				Thermostat
21315	2000409	18ER				Automatic fuse C40
21315	2000411	18ER				Automatic fuse C32
21325	10300401	18ER				Clamp
21330	50563	18ER				Sensor
21335	80200	18ER				Power supply cable 5x4x3400
21335	75359	18ER				4x6 flame-retardant cable
21345	80408	18ER				L=345mm slide
21350	80409	18ER				L=140mm slide
21355	80417	18ER				lead through rubber
21360	80407	18ER				Plastic box
21365	80414	18ER				Cable-press
21370	15086	18ER				Contacteur 230 V
21375	2000390	18ER				Motorprotector 1 - 1.6A
21380	3006080	18ER				Auxiliary contact LMS25
21385	10300050	18ER				Contacteur 25A/12A 4NA 230V
21385	10300052	18ER				36A/20A contacteur - 230V 50/60HZ
21385	10300054	18ER				Contacteur 25A/16A 4NA 230V
21395	2907080	18ER				Relay 6-10A
21395	80150	18ER				9-15A temperature relay
21405	80101/A	18ER				Complete electric box for membrane push button-driver
21410	15384	18ER				500VA 0-230-400-415-440/230V tranformer
21410	15381	18ER				160VA 0-230-400-415-440/230V tranformer
21415	15147	18ER				5x20 fuse holder
21420	15161	18ER				5x20 1,6A fuse

mc=SIMPLE BODY VERSION, em=ELECTROMECHANICAL SWITCHES, e=ELECTRONICAL SWITCHES,  
uw=LOWER AND UPPER WASHING

18ER=18ER

bp=BOOSTER PUMP, dvgw=DVGW, dd=DETERGENT DISPENSER, dp=DRAIN PUMP

A=3/N/PE~400/230V 50Hz, B=~250V 16A 50Hz, C=3/N/PE~380/220V 50Hz, D=3/PE~200V 50-60Hz, F=2/PE 220-240V 50Hz, G=3/N/PE~415/240V 50Hz, H=3/PE~230V 50Hz, I=3/PE~220V 60Hz, J=3/PE~380 50Hz, K=3/PE~400V 50Hz, L=3/PE~415V 50Hz, M=3/PE~440V 60Hz, N=3/PE~460V 60Hz, O=3/PE~480V 60Hz, P=1/N/PE~220-240V 50Hz, R=2/PE~220-230V 60Hz, S=3/N/PE~400/230V 50Hz, T=3/PE~230V 60Hz, U=1/N/PE~100V 50-60Hz



05\_006\_e

## Spare parts

ID	P-code	Type	Date from	Date to	Accessory	Description
<b>Module:Solenoid valve group</b>						
24700	30001001	18ER				Solenoid valve
24705	N.C.	18ER				Pression reducing valve
24710	80275	18ER				Pipe coupling
24715	2000121	18ER				Filter
24720	12025	18ER				Coupling
24725	22236	18ER				Support

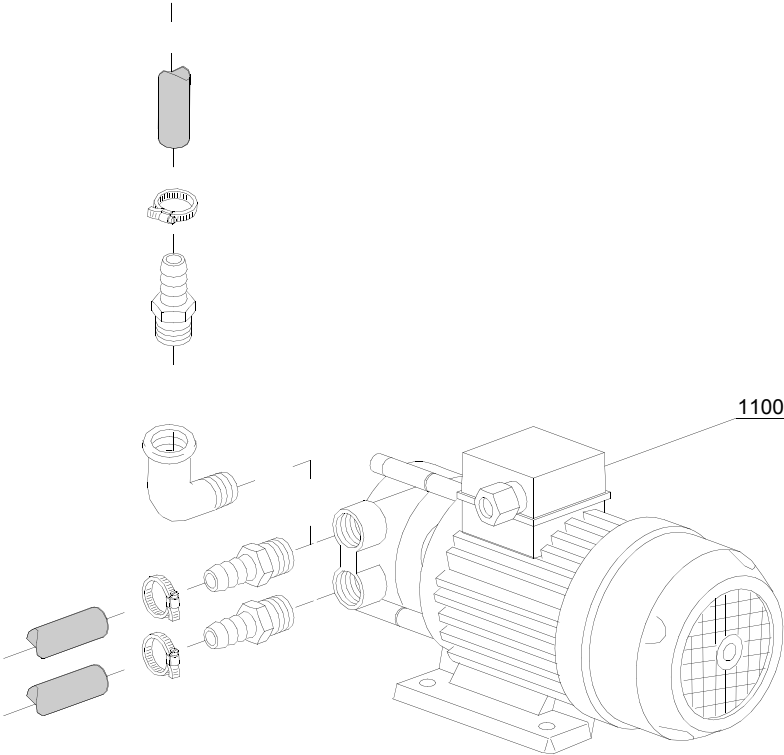
mc=SIMPLE BODY VERSION, em=ELECTROMECHANICAL SWITCHES, e=ELECTRONICAL SWITCHES,  
uw=LOWER AND UPPER WASHING

18ER=18ER

bp=BOOSTER PUMP, dvgw=DVGW, dd=DETERGENT DISPENSER, dp=DRAIN PUMP

A=3/N/PE~400/230V 50Hz, B=~250V 16A 50Hz, C=3/N/PE~380/220V 50Hz, D=3/PE~200V 50-60Hz, F=2/PE 220-240V 50Hz, G=3/N/PE~415/240V 50Hz, H=3/PE~230V 50Hz, I=3/PE~220V 60Hz, J=3/PE~380 50Hz, K=3/PE~400V 50Hz, L=3/PE~415V 50Hz, M=3/PE~440V 60Hz, N=3/PE~460V 60Hz, O=3/PE~480V 60Hz, P=1/N/PE~220-240V 50Hz, R=2/PE~220-230V 60Hz, S=3/N/PE~400/230V 50Hz, T=3/PE~230V 60Hz, U=1/N/PE~100V 50-60Hz

07\_002\_e



## Spare parts

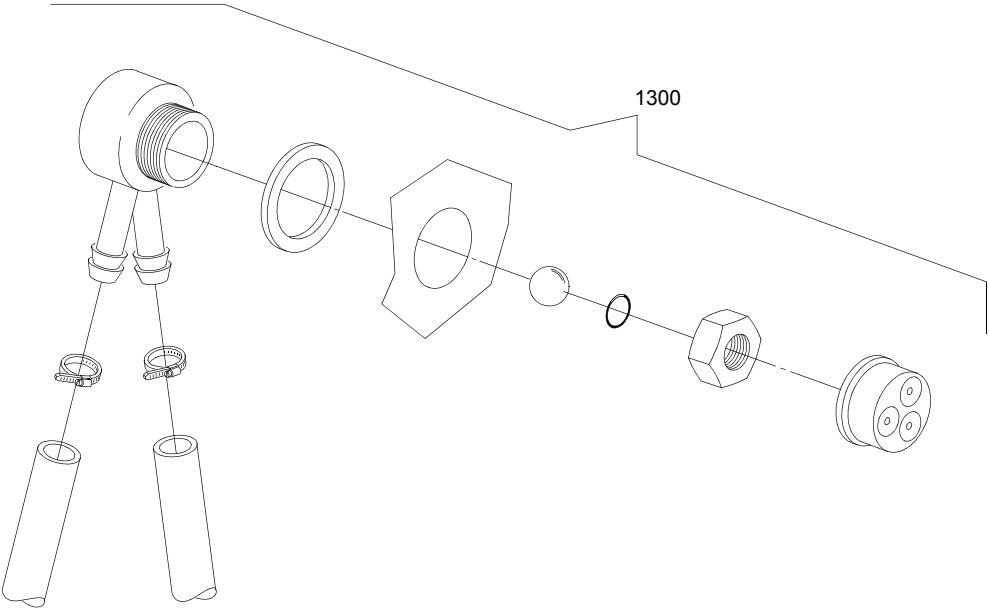
ID	P-code	Type	Date from	Date to	Accessory	Description
<b>Module:Booster pump</b>						
1100	15100	18ER			bp	Booster pump 230V
1100	15100/A	18ER			bp	Booster pump - 0,5HP 60Hz

mc=SIMPLE BODY VERSION, em=ELECTROMECHANICAL SWITCHES, e=ELECTRONICAL SWITCHES,  
uw=LOWER AND UPPER WASHING

18ER=18ER

bp=BOOSTER PUMP, dvgw=DVGW, dd=DETERGENT DISPENSER, dp=DRAIN PUMP

A=3/N/PE~400/230V 50Hz, B=~250V 16A 50Hz, C=3/N/PE~380/220V 50Hz, D=3/PE~200V 50-60Hz, F=2/PE 220-240V 50Hz, G=3/N/PE~415/240V 50Hz, H=3/PE~230V 50Hz, I=3/PE~220V 60Hz, J=3/PE~380 50Hz, K=3/PE~400V 50Hz, L=3/PE~415V 50Hz, M=3/PE~440V 60Hz, N=3/PE~460V 60Hz, O=3/PE~480V 60Hz, P=1/N/PE~220-240V 50Hz, R=2/PE~220-230V 60Hz, S=3/N/PE~400/230V 50Hz, T=3/PE~230V 60Hz, U=1/N/PE~100V 50-60Hz



08\_005\_e

## Spare parts

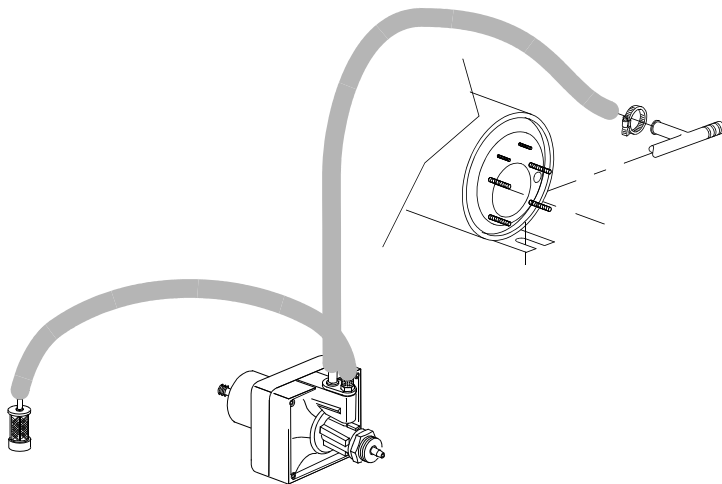
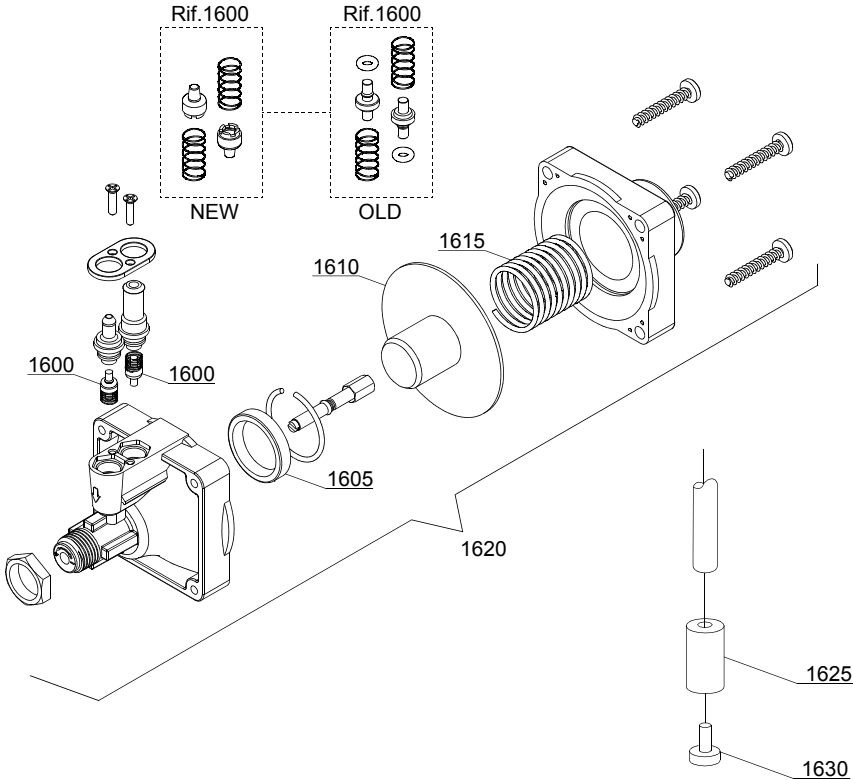
ID	P-code	Type	Date from	Date to	Accessory	Description
<b>Module:DVGW</b>						
1300	999900006	18ER			dvgw	DVGW assembly

mc=SIMPLE BODY VERSION, em=ELECTROMECHANICAL SWITCHES, e=ELECTRONICAL SWITCHES,  
uw=LOWER AND UPPER WASHING

18ER=18ER

bp=BOOSTER PUMP, dvgw=DVGW, dd=DETERGENT DISPENSER, dp=DRAIN PUMP

A=3/N/PE~400/230V 50Hz, B=~250V 16A 50Hz, C=3/N/PE~380/220V 50Hz, D=3/PE~200V 50-60Hz, F=2/PE 220-240V 50Hz, G=3/N/PE~415/240V 50Hz, H=3/PE~230V 50Hz, I=3/PE~220V 60Hz, J=3/PE~380 50Hz, K=3/PE~400V 50Hz, L=3/PE~415V 50Hz, M=3/PE~440V 60Hz, N=3/PE~460V 60Hz, O=3/PE~480V 60Hz, P=1/N/PE~220-240V 50Hz, R=2/PE~220-230V 60Hz, S=3/N/PE~400/230V 50Hz, T=3/PE~230V 60Hz, U=1/N/PE~100V 50-60Hz



10\_003\_e

## Spare parts

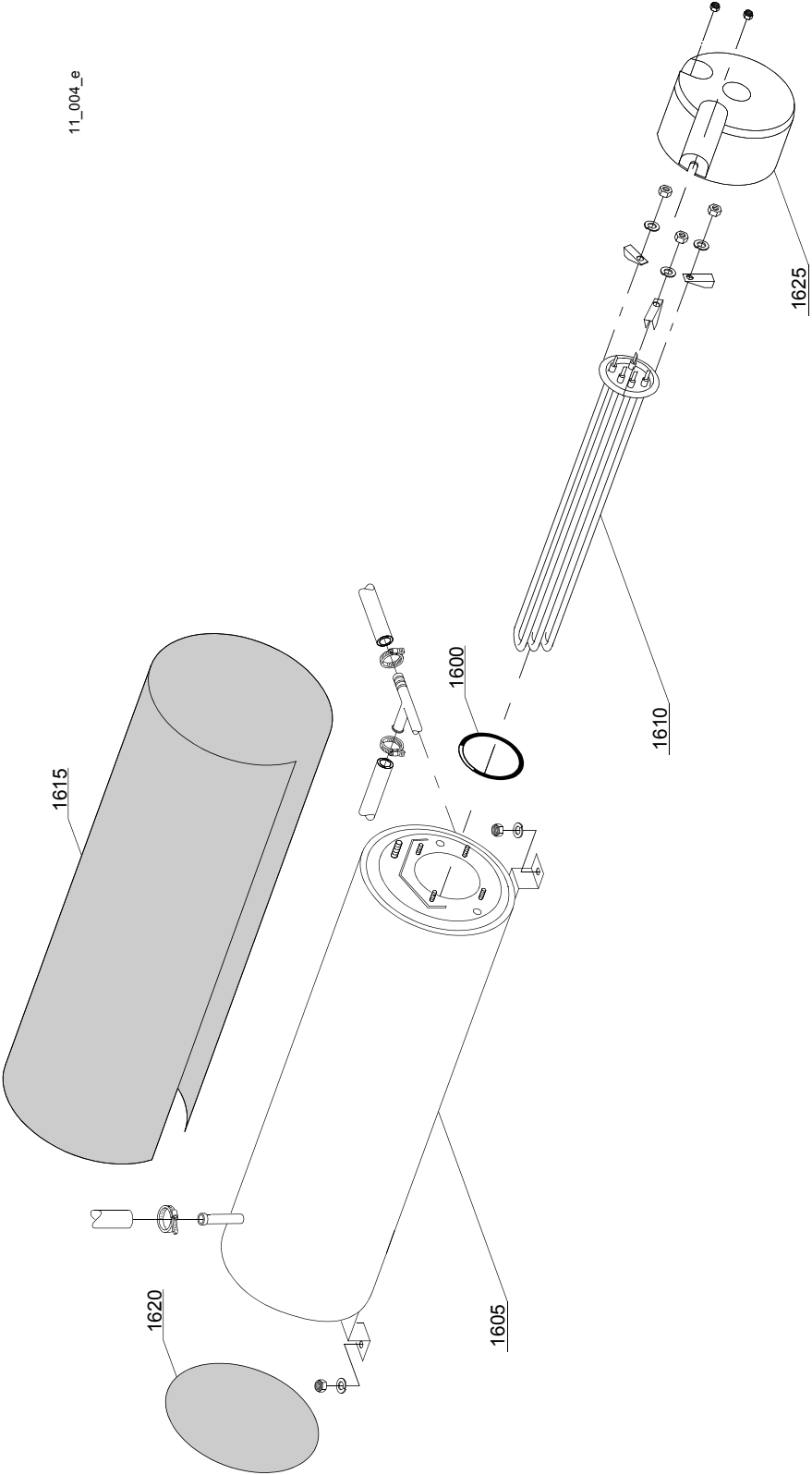
ID	P-code	Type	Date from	Date to	Accessory	Description
<b>Module: Rinse aid dispenser group</b>						
1600	10805	18ER				Tecnopro non return valve
1605	10806	18ER				Ø22 O-ring
1610	10807	18ER				Membrane
1615	10808	18ER				Spring
1620	10599999	18ER				Rinse aid pump
1625	12525	18ER				Counter-weight
1630	15058	18ER				Suction filter

mc=SIMPLE BODY VERSION, em=ELECTROMECHANICAL SWITCHES, e=ELECTRONICAL SWITCHES,  
uw=LOWER AND UPPER WASHING

18ER=18ER

bp=BOOSTER PUMP, dvgw=DVGW, dd=DETERGENT DISPENSER, dp=DRAIN PUMP

A=3/N/PE~400/230V 50Hz, B=~250V 16A 50Hz, C=3/N/PE~380/220V 50Hz, D=3/PE~200V 50-60Hz, F=2/PE 220-240V 50Hz, G=3/N/PE~415/240V 50Hz, H=3/PE~230V 50Hz, I=3/PE~220V 60Hz, J=3/PE~380 50Hz, K=3/PE~400V 50Hz, L=3/PE~415V 50Hz, M=3/PE~440V 60Hz, N=3/PE~460V 60Hz, O=3/PE~480V 60Hz, P=1/N/PE~220-240V 50Hz, R=2/PE~220-230V 60Hz, S=3/N/PE~400/230V 50Hz, T=3/PE~230V 60Hz, U=1/N/PE~100V 50-60Hz



## Spare parts

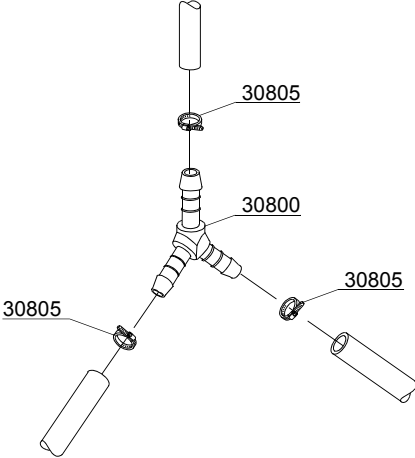
ID	P-code	Type	Date from	Date to	Accessory	Description
<b>Module:Boiler group</b>						
1600	13015	18ER				Gasket OR 6225
1605	80905	18ER				Boiler
1610	30001010	18ER				Heating element 6 kW
1610	30001011	18ER				Heating element 9 kW
1610	30001011/A	18ER				12/13,07KW 230/240V 3 heating element
1610	30001011/C	18ER				9KW 254/440V heating element
1615	30002030	18ER				Insulation boiler
1620	75205	18ER				Ø160 end piece
1625	75311	18ER				Casing

mc=SIMPLE BODY VERSION, em=ELECTROMECHANICAL SWITCHES, e=ELECTRONICAL SWITCHES,  
uw=LOWER AND UPPER WASHING

18ER=18ER

bp=BOOSTER PUMP, dvgw=DVGW, dd=DETERGENT DISPENSER, dp=DRAIN PUMP

A=3/N/PE~400/230V 50Hz, B=~250V 16A 50Hz, C=3/N/PE~380/220V 50Hz, D=3/PE~200V 50-60Hz, F=2/PE 220-240V 50Hz, G=3/N/PE~415/240V 50Hz, H=3/PE~230V 50Hz, I=3/PE~220V 60Hz, J=3/PE~380 50Hz, K=3/PE~400V 50Hz, L=3/PE~415V 50Hz, M=3/PE~440V 60Hz, N=3/PE~460V 60Hz, O=3/PE~480V 60Hz, P=1/N/PE~220-240V 50Hz, R=2/PE~220-230V 60Hz, S=3/N/PE~400/230V 50Hz, T=3/PE~230V 60Hz, U=1/N/PE~100V 50-60Hz



12\_003ae

## Spare parts

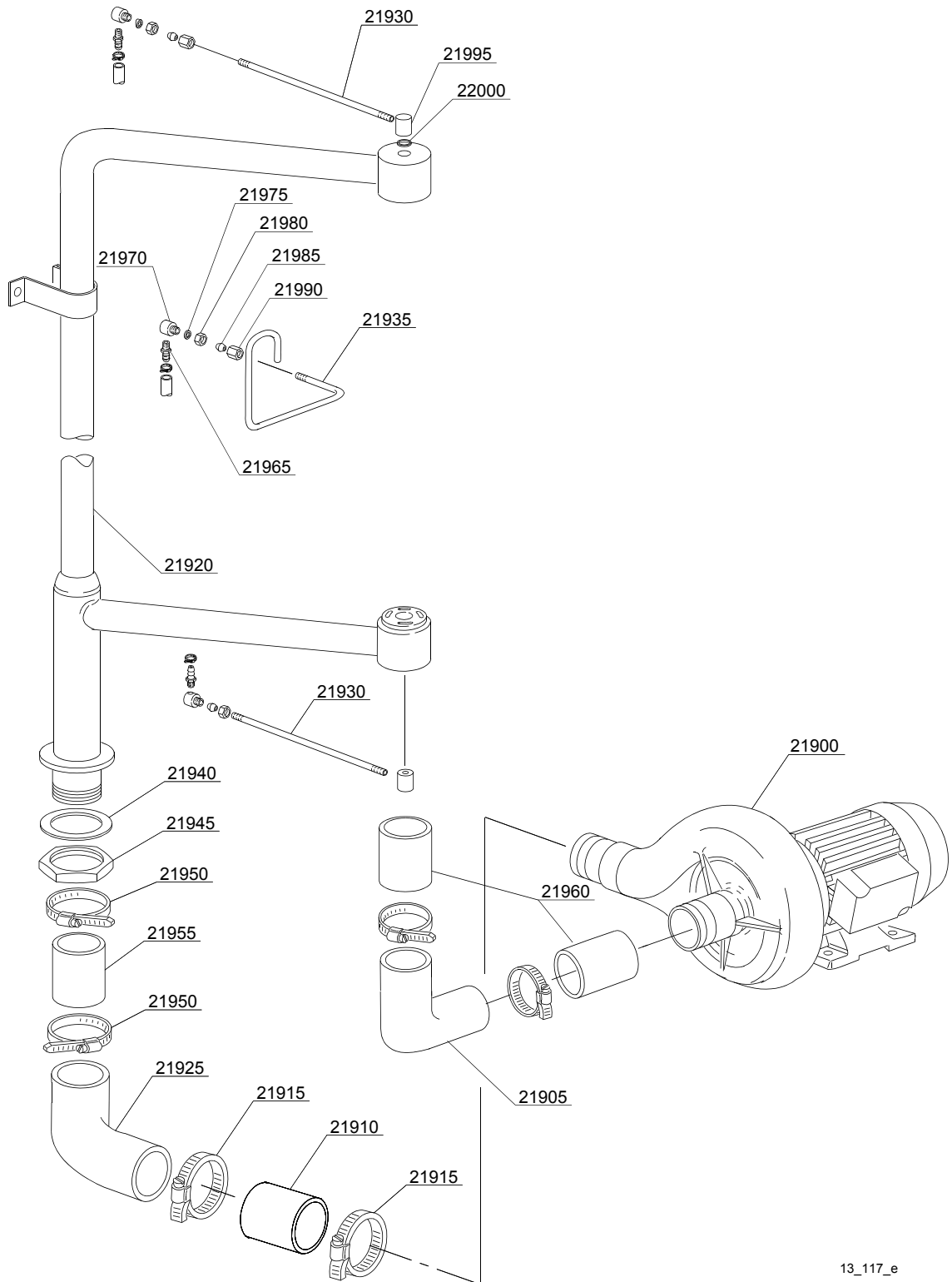
ID	P-code	Type	Date from	Date to	Accessory	Description
<b>Module:3 ways connection</b>						
30800	540091	18ER				Ø12 mm plastic 3 ways connection
30805	11807	18ER				Clamp 12-22

mc=SIMPLE BODY VERSION, em=ELECTROMECHANICAL SWITCHES, e=ELECTRONICAL SWITCHES,  
uw=LOWER AND UPPER WASHING

18ER=18ER

bp=BOOSTER PUMP, dvgw=DVGW, dd=DETERGENT DISPENSER, dp=DRAIN PUMP

A=3/N/PE~400/230V 50Hz, B=~250V 16A 50Hz, C=3/N/PE~380/220V 50Hz, D=3/PE~200V 50-60Hz, F=2/PE 220-240V 50Hz, G=3/N/PE~415/240V 50Hz, H=3/PE~230V 50Hz, I=3/PE~220V 60Hz, J=3/PE~380 50Hz, K=3/PE~400V 50Hz, L=3/PE~415V 50Hz, M=3/PE~440V 60Hz, N=3/PE~460V 60Hz, O=3/PE~480V 60Hz, P=1/N/PE~220-240V 50Hz, R=2/PE~220-230V 60Hz, S=3/N/PE~400/230V 50Hz, T=3/PE~230V 60Hz, U=1/N/PE~100V 50-60Hz



13\_117\_e

## Spare parts

ID	P-code	Type	Date from	Date to	Accessory	Description
<b>Module: Wash pump</b>						
21900	80913	18ER				Pump
21900	80914	18ER				4Hp wash pump - 240/415V
21900	80916	18ER				4Hp wash pump - 60Hz
21905	80251	18ER				Suction elbow
21910	80501	18ER				Coupling pipe 94
21915	11837	18ER				Clamp 80-100
21920	80211	18ER				Wash ramp
21925	80252	18ER				Elbow
21930	80210	18ER				Rinse collector
21935	10200361	18ER				Filling pipe
21940	80208	18ER				95x75x3 O-ring
21945	80213/A	18ER				Ramp fixing nut
21950	2902491	18ER				Clamp 60-80
21955	80500	18ER				Coupling pipe 73
21960	80502	18ER				Coupling pipe 130
21965	12005	18ER				Rubber holder ¼
21970	80231	18ER				Pipe fitting
21975	10200171	18ER				Gasket 17x25x2
21980	10200101	18ER				Nut
21985	10200182	18ER				Cone
21990	10600016	18ER				Nut
21995	10600202	18ER				Coupling
22000	13009	18ER				OR 2050 NBR O-ring

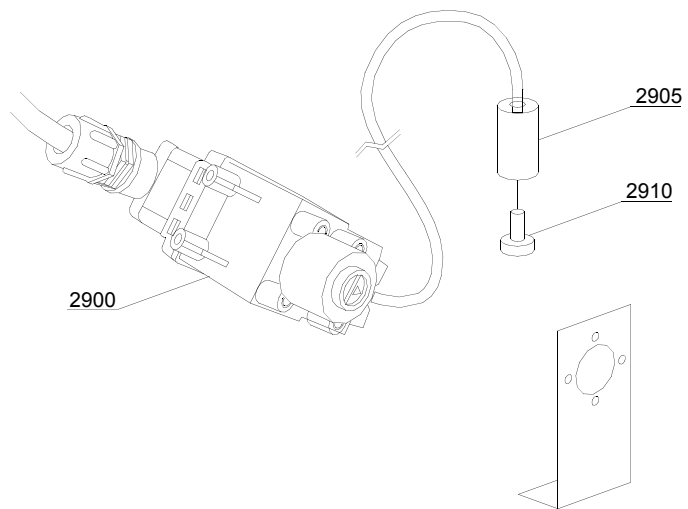
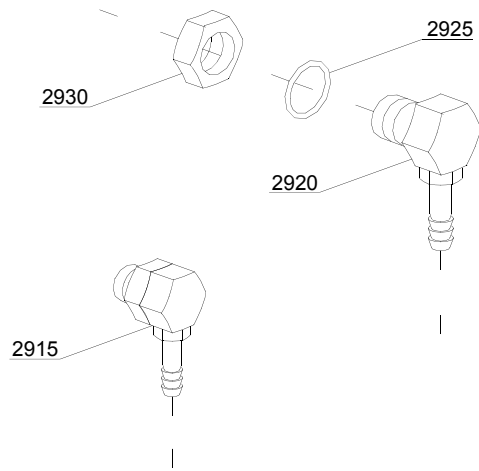
mc=SIMPLE BODY VERSION, em=ELECTROMECHANICAL SWITCHES, e=ELECTRONICAL SWITCHES,  
uw=LOWER AND UPPER WASHING

18ER=18ER

bp=BOOSTER PUMP, dvgw=DVGW, dd=DETERGENT DISPENSER, dp=DRAIN PUMP

A=3/N/PE~400/230V 50Hz, B=~250V 16A 50Hz, C=3/N/PE~380/220V 50Hz, D=3/PE~200V 50-60Hz, F=2/PE 220-240V 50Hz, G=3/N/PE~415/240V 50Hz, H=3/PE~230V 50Hz, I=3/PE~220V 60Hz, J=3/PE~380 50Hz, K=3/PE~400V 50Hz, L=3/PE~415V 50Hz, M=3/PE~440V 60Hz, N=3/PE~460V 60Hz, O=3/PE~480V 60Hz, P=1/N/PE~220-240V 50Hz, R=2/PE~220-230V 60Hz, S=3/N/PE~400/230V 50Hz, T=3/PE~230V 60Hz, U=1/N/PE~100V 50-60Hz

14\_002\_e



## Spare parts

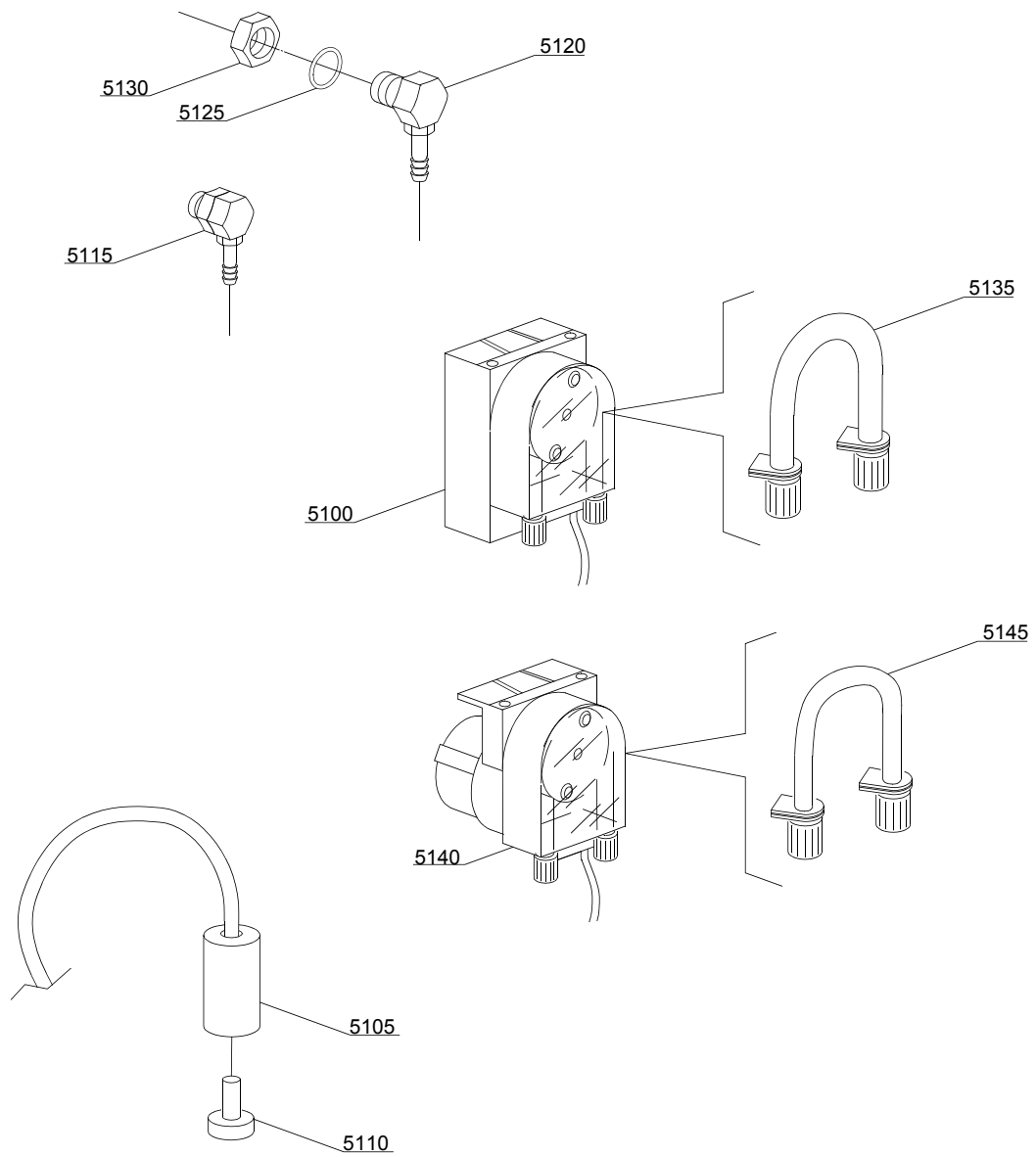
ID	P-code	Type	Date from	Date to	Accessory	Description
<b>Module:Dosing detergent group</b>						
2900	15108/L	18ER			dd	Lang detergent pump
2905	12525	18ER			dd	Counter-weight
2910	15058	18ER			dd	Suction filter
2915	15123	18ER			dd	Compleat plastic injector
2920	15148	18ER			dd	Steel injector
2925	15159	18ER			dd	OR O-ring
2930	10200205	18ER			dd	Nut m12x1

mc=SIMPLE BODY VERSION, em=ELECTROMECHANICAL SWITCHES, e=ELECTRONICAL SWITCHES,  
uw=LOWER AND UPPER WASHING

18ER=18ER

bp=BOOSTER PUMP, dvgw=DVGW, dd=DETERGENT DISPENSER, dp=DRAIN PUMP

A=3/N/PE~400/230V 50Hz, B=~250V 16A 50Hz, C=3/N/PE~380/220V 50Hz, D=3/PE~200V 50-60Hz, F=2/PE 220-240V 50Hz, G=3/N/PE~415/240V 50Hz, H=3/PE~230V 50Hz, I=3/PE~220V 60Hz, J=3/PE~380 50Hz, K=3/PE~400V 50Hz, L=3/PE~415V 50Hz, M=3/PE~440V 60Hz, N=3/PE~460V 60Hz, O=3/PE~480V 60Hz, P=1/N/PE~220-240V 50Hz, R=2/PE~220-230V 60Hz, S=3/N/PE~400/230V 50Hz, T=3/PE~230V 60Hz, U=1/N/PE~100V 50-60Hz



14\_004\_e

## Spare parts

ID	P-code	Type	Date from	Date to	Accessory	Description
<b>Module:Dosing detergent group</b>						
5100	15985	18ER			dd	Seko detergent pump
5105	12525	18ER			dd	Counter-weight
5110	15058	18ER			dd	Small filter
5115	15123	18ER			dd	Complet plastic injector
5120	15148	18ER			dd	Steel injector
5125	15159	18ER			dd	OR O-ring
5130	10200205	18ER			dd	Nut m12x1
5135	15185	18ER			dd	Seko thermoplastic pipe
5140	15985	18ER			dd	Germac detergent pump
5145	15108/E	18ER			dd	Germac thermoplastic pipe

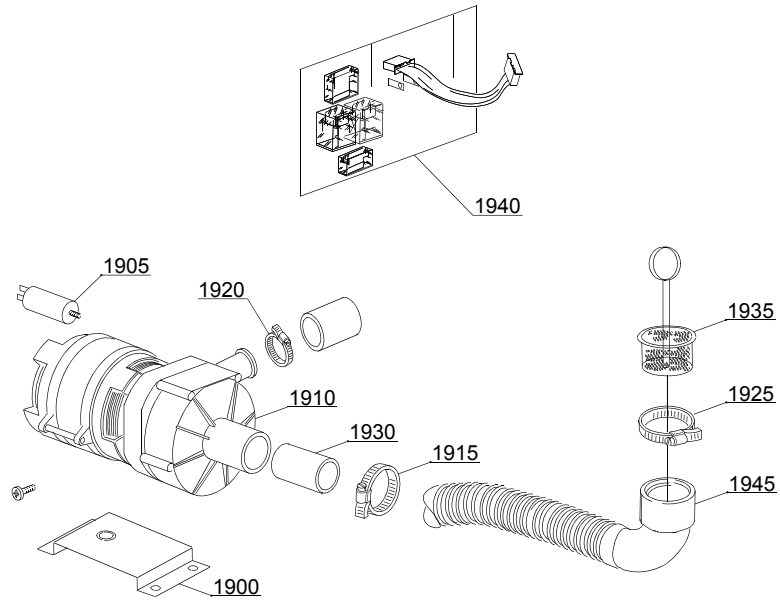
mc=SIMPLE BODY VERSION, em=ELECTROMECHANICAL SWITCHES, e=ELECTRONICAL SWITCHES,  
uw=LOWER AND UPPER WASHING

18ER=18ER

bp=BOOSTER PUMP, dvgw=DVGW, dd=DETERGENT DISPENSER, dp=DRAIN PUMP

A=3/N/PE~400/230V 50Hz, B=~250V 16A 50Hz, C=3/N/PE~380/220V 50Hz, D=3/PE~200V 50-60Hz, F=2/PE 220-240V 50Hz, G=3/N/PE~415/240V 50Hz, H=3/PE~230V 50Hz, I=3/PE~220V 60Hz, J=3/PE~380 50Hz, K=3/PE~400V 50Hz, L=3/PE~415V 50Hz, M=3/PE~440V 60Hz, N=3/PE~460V 60Hz, O=3/PE~480V 60Hz, P=1/N/PE~220-240V 50Hz, R=2/PE~220-230V 60Hz, S=3/N/PE~400/230V 50Hz, T=3/PE~230V 60Hz, U=1/N/PE~100V 50-60Hz

15\_003\_e



## Spare parts

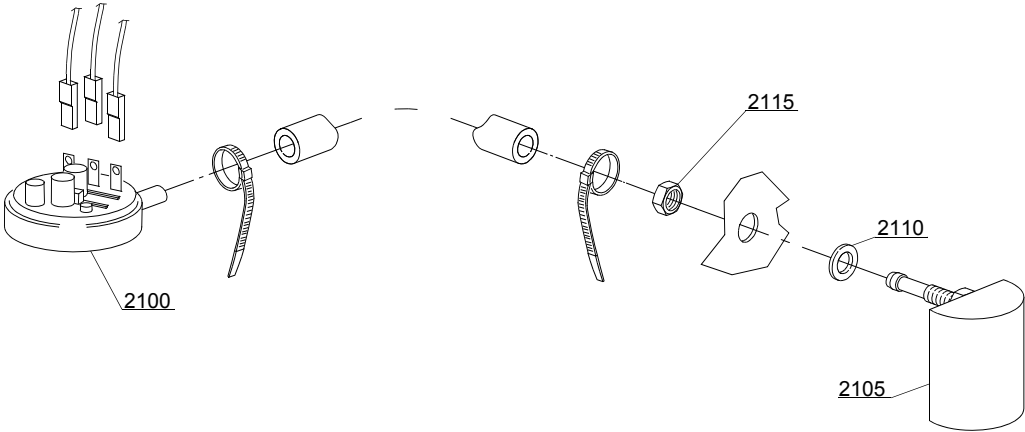
ID	P-code	Type	Date from	Date to	Accessory	Description
<b>Module: Drain pump group</b>						
1900	440122	18ER			dp	Pump support
1905	10702	18ER			dp	5 Uf Condenser
1910	10501/A	18ER			dp	190W 230V drain pump
1915	11806	18ER			dp	25/40 clamp
1920	11836	18ER			dp	20/32 clamp
1925	11809	18ER			dp	30/45 clamp
1930	18044	18ER			dp	Ø28 top wash pipe
1935	10200039	18ER			dp	Flow drain filter
1940	50567	18ER			dp	Electronic Timer EXP-PS (Optionals)
1945	11600050	18ER			dp	Suction pipe

mc=SIMPLE BODY VERSION, em=ELECTROMECHANICAL SWITCHES, e=ELECTRONICAL SWITCHES,  
uw=LOWER AND UPPER WASHING

18ER=18ER

bp=BOOSTER PUMP, dvgw=DVGW, dd=DETERGENT DISPENSER, dp=DRAIN PUMP

A=3/N/PE~400/230V 50Hz, B=~250V 16A 50Hz, C=3/N/PE~380/220V 50Hz, D=3/PE~200V 50-60Hz, F=2/PE 220-240V 50Hz, G=3/N/PE~415/240V 50Hz, H=3/PE~230V 50Hz, I=3/PE~220V 60Hz, J=3/PE~380 50Hz, K=3/PE~400V 50Hz, L=3/PE~415V 50Hz, M=3/PE~440V 60Hz, N=3/PE~460V 60Hz, O=3/PE~480V 60Hz, P=1/N/PE~220-240V 50Hz, R=2/PE~220-230V 60Hz, S=3/N/PE~400/230V 50Hz, T=3/PE~230V 60Hz, U=1/N/PE~100V 50-60Hz



16\_001\_e

## Spare parts

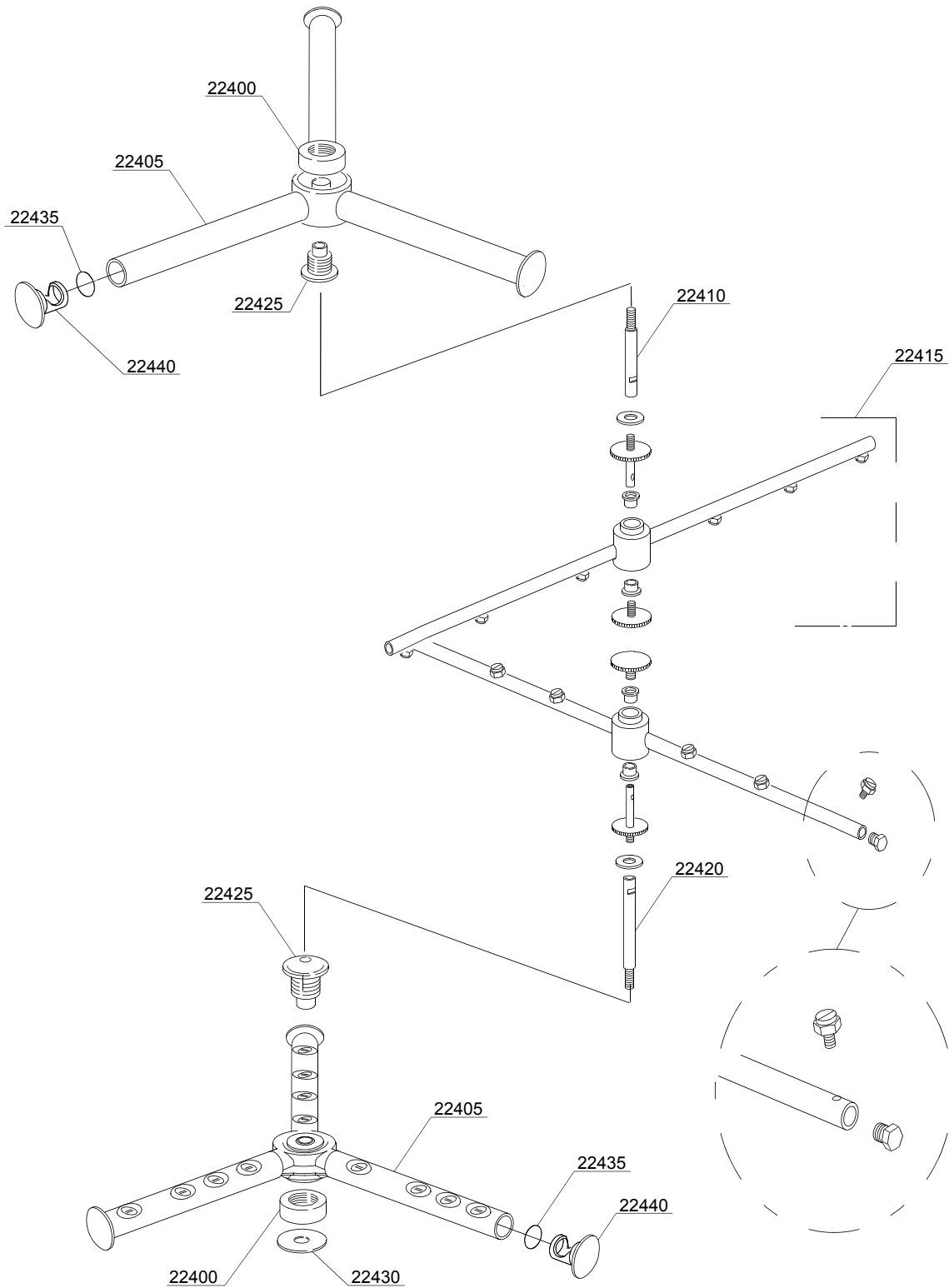
ID	P-code	Type	Date from	Date to	Accessory	Description
<b>Module:Pressure switch group with air trap</b>						
2100	80225	18ER				Pressure switch
2105	10911	18ER				Air trap
2110	13301	18ER				Gasket 14x8x1,5
2115	11702	18ER				Nut M8

mc=SIMPLE BODY VERSION, em=ELECTROMECHANICAL SWITCHES, e=ELECTRONICAL SWITCHES,  
uw=LOWER AND UPPER WASHING

18ER=18ER

bp=BOOSTER PUMP, dvgw=DVGW, dd=DETERGENT DISPENSER, dp=DRAIN PUMP

A=3/N/PE~400/230V 50Hz, B=~250V 16A 50Hz, C=3/N/PE~380/220V 50Hz, D=3/PE~200V 50-60Hz, F=2/PE 220-240V 50Hz, G=3/N/PE~415/240V 50Hz, H=3/PE~230V 50Hz, I=3/PE~220V 60Hz, J=3/PE~380 50Hz, K=3/PE~400V 50Hz, L=3/PE~415V 50Hz, M=3/PE~440V 60Hz, N=3/PE~460V 60Hz, O=3/PE~480V 60Hz, P=1/N/PE~220-240V 50Hz, R=2/PE~220-230V 60Hz, S=3/N/PE~400/230V 50Hz, T=3/PE~230V 60Hz, U=1/N/PE~100V 50-60Hz



17\_115\_e

## Spare parts

ID	P-code	Type	Date from	Date to	Accessory	Description
<b>Module:Turret group with rotating arms</b>						
22400	80222	18ER				Nut for hub
22405	80218	18ER				Wash group
22410	80321	18ER				Top shaft
22415	90003	18ER				Rinse group
22420	80320	18ER				Lower shaft
22425	80221	18ER				Holder
22430	11600033	18ER				Flow reduction ring
22435	13023	18ER				O-ring
22440	3003029	18ER				Plug

mc=SIMPLE BODY VERSION, em=ELECTROMECHANICAL SWITCHES, e=ELECTRONICAL SWITCHES,  
uw=LOWER AND UPPER WASHING

18ER=18ER

bp=BOOSTER PUMP, dvgw=DVGW, dd=DETERGENT DISPENSER, dp=DRAIN PUMP

A=3/N/PE~400/230V 50Hz, B=~250V 16A 50Hz, C=3/N/PE~380/220V 50Hz, D=3/PE~200V 50-60Hz, F=2/PE 220-240V 50Hz, G=3/N/PE~415/240V 50Hz, H=3/PE~230V 50Hz, I=3/PE~220V 60Hz, J=3/PE~380 50Hz, K=3/PE~400V 50Hz, L=3/PE~415V 50Hz, M=3/PE~440V 60Hz, N=3/PE~460V 60Hz, O=3/PE~480V 60Hz, P=1/N/PE~220-240V 50Hz, R=2/PE~220-230V 60Hz, S=3/N/PE~400/230V 50Hz, T=3/PE~230V 60Hz, U=1/N/PE~100V 50-60Hz