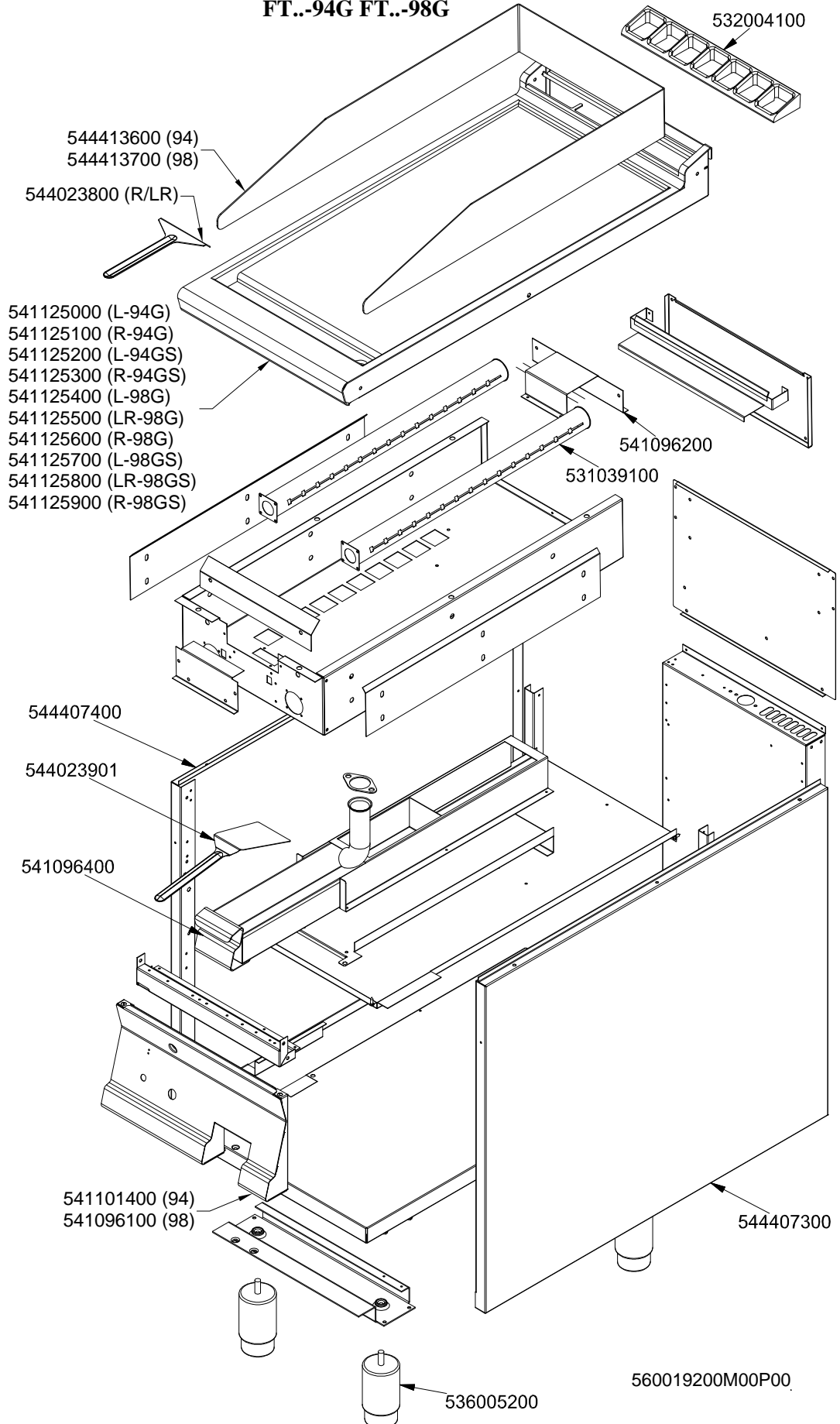


IPERLOTUS 90

GAS / GAS / GAS / GAZ

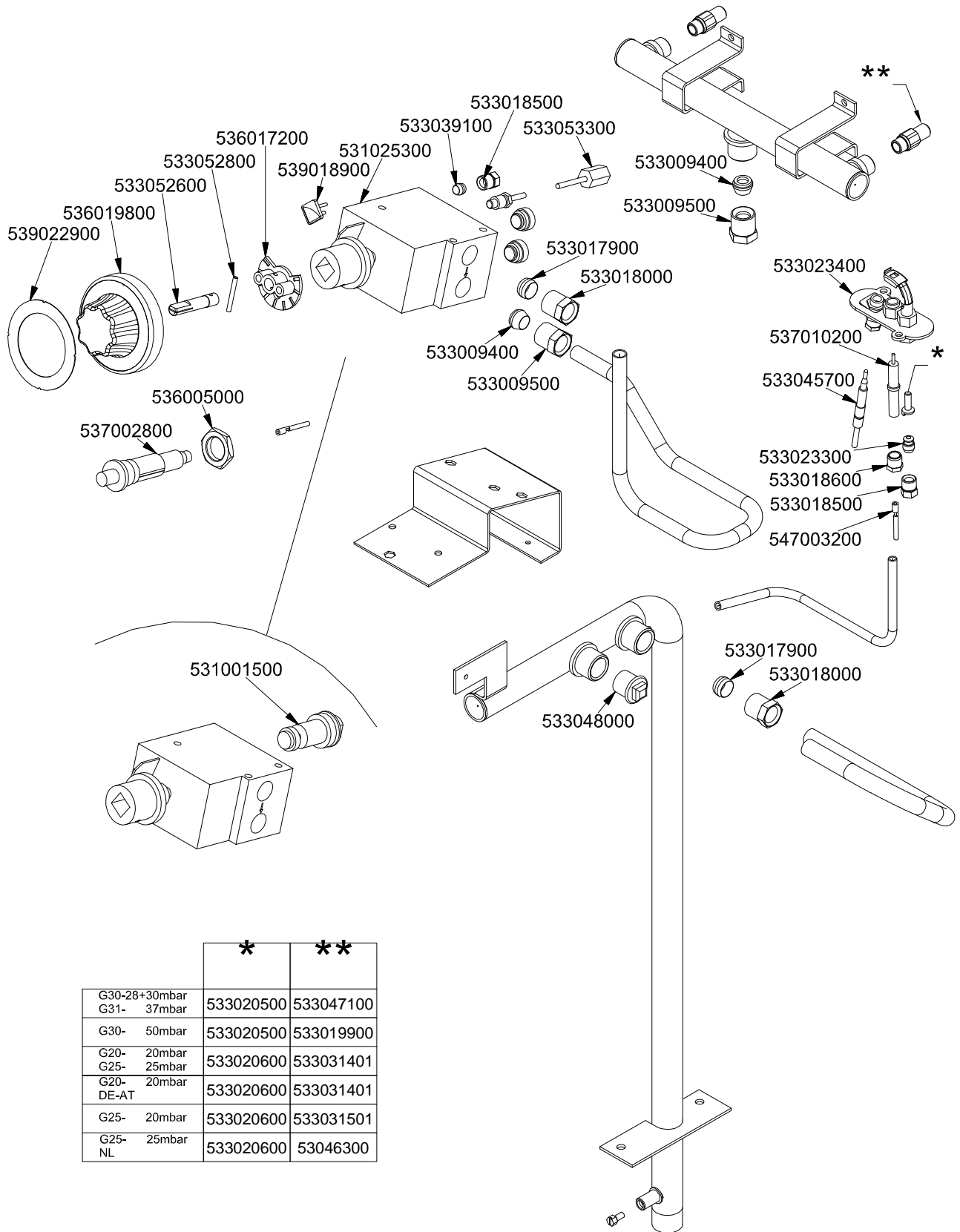
FT..-94G FT..-98G



IPERLOTUS 90

GAS / GAS / GAS / GAZ

FT..-94G FT..-98G



	*	**
G30-28+30mbar G31- 37mbar	533020500	533047100
G30- 50mbar	533020500	533019900
G20- 20mbar G25- 25mbar	533020600	533031401
G20- 20mbar DE-AT	533020600	533031401
G25- 20mbar	533020600	533031501
G25- 25mbar NL	533020600	53046300

560019300M00P00

Page	Pos	Code	Description
001		532004100	FLUE GRID L=370 70LINE (RAF)
001		541096200	BURNER SUPPORT FT-74G FT-78G
001		531039100	BURNER FT 90 LINE
001		544407400	LEFT SIDE PANEL 70 LINE
001		544023901	SPATTLE FOR FRY-TOP
001		541096400	DRIP TRAY FT S.70
001		544407300	RIGHT SIDE PANEL 90 LINE
001		536005200	INOX LEG 2" 120-180 M10
001		541125300	UPPER PLATE FTR-94GS
001		541101400	CONTROL PANEL FT-74G
001		544413600	SPLASH GUARD FT-94
001		544023800	
002		533020500	NOZZLE 0.140 §19
002		533020600	NOZZLE 0.140 §27
002		533047100	NOZZLE §100A CH12*30 GF-BM6/8
002		533019900	NOZZLE §90 G-FT3 F-FT-B2
002		533031401	NOZZLE §155 CH12X30 G20 MH-B2/FT
002		533031501	NOZZLE §170 CH12X30,0
002		53046300	
002		536017200	MATCHER REMOTE CONTROL EUROSIT
002		533052800	ELASTIC PEG §2,5*26
002		533052600	PIN FOR KNOB 65LINE
002		536019800	BLACK KNOB §70 PIN §8*6,5
002		539022900	ADHESIVE GRADUATED DISC FOR KNOB
002		533018500	FITTING FOR BICONE D.6 M10*1
002		533053300	THERMOCOUPLE EXTENSION M9*1
002		533039100	BICONE §6
002		531025300	VALVE EUROSIT FT 100-340°C
002		539018900	INDEX FOR KNOB
002		533009400	BICONE 10S
002		533009500	NIPPLE FOR BICONE 10S
002		533017900	BICONE D.12
002		533018000	ELBOW FOR BICONE D.12 3/8 RS L20
002		533023400	"TARGET" PILOT + NIPPLE TC
002		536005000	NUT M18 FOR PIEZOELECTRIC IGNITION
002		537002800	PIEZOELECTRIC IGNITION M18
002		531001500	MAGNET FOR EUROSIT VALVE
002		533048000	THREADED CAP 3/8"G
002		537010200	ROUND PLUG §2,4 - SHORT ELECTRODE
002		533045700	THERMOCOUPLE M9*1 500
002		533023300	BICONE §6 ("TARGET" PILOT)
002		547003200	HIGH-VOLTAGE CABLE TUBE.§2 L=500
002		533018600	PLUG FITTING