

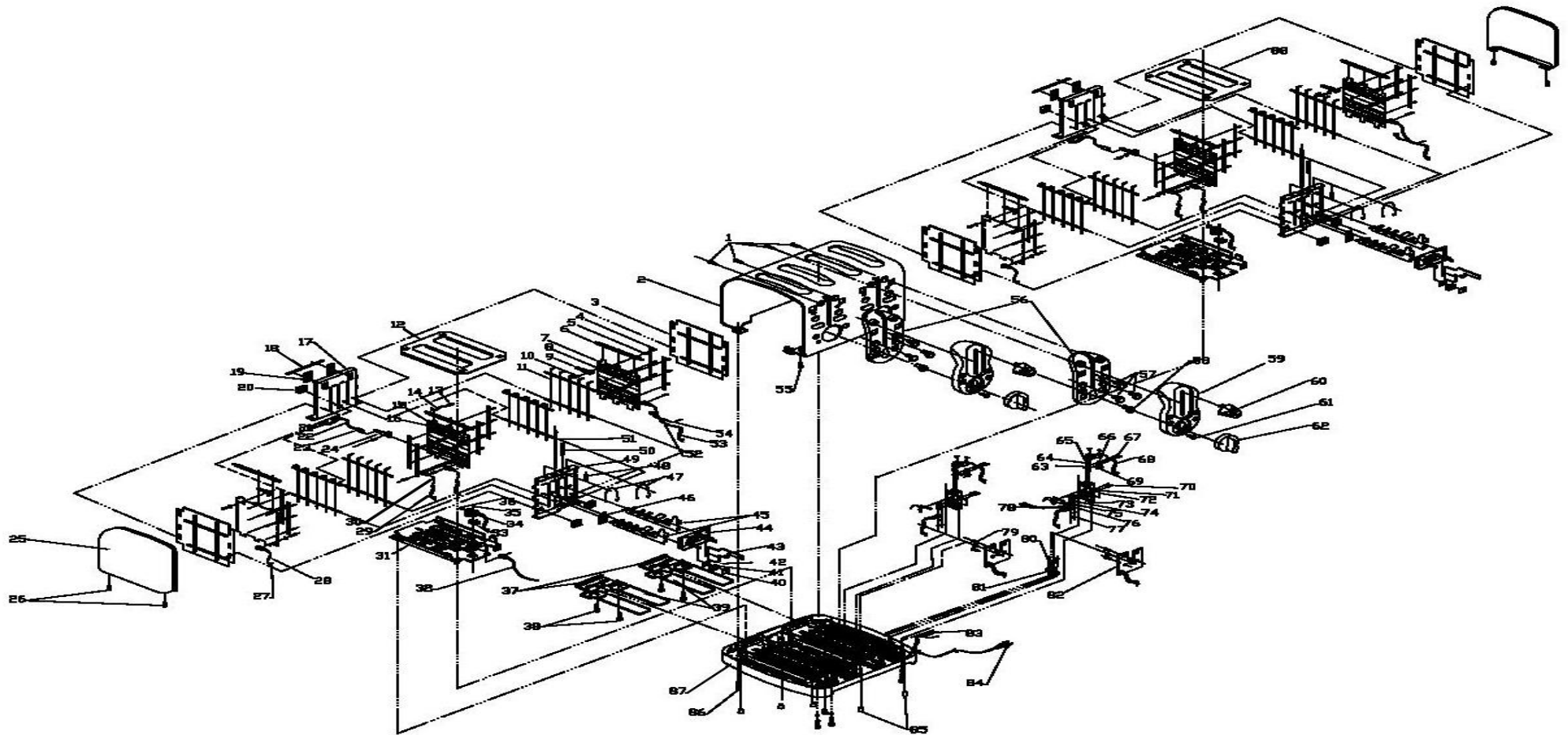


Snackgeräte
Pop-Up Toaster

Artikel-Nr. 222007
(282-1055)

Explosionszeichnung / Ersatzteile

Artikel-Beschreibung: Toaster Modell ARIS 4
Artikel-Nr.: 282-1055



Saro Gastro-Products GmbH
Telefon: (0 28 22) 92 58-0

Sandbahn 6
e-mail: info@saro.de

46446 Emmerich am Rhein
Internet: www.saro.de

Artikel-Beschreibung : Toaster Modell ARIS 4

Artikel-Nr. : 282-1055

Nr.	LI Artikel NR.	Artikel NR.	Beschreibung	Artikel Beschreibung
1			Self-Tapping Screw / D3.0X8PA"+	
2			Top Plate / Chrome Steel 0.4T	
3			Anti-Heat Panel / Zinc Plate Steel 0.4T	
4			Eyelet / Brass OD2.5X3.0	
5			Mica / Mica Sheet 0.4T	
6			Mica Support / Zinc Plate Steel 0.4T	
7			Mica (Side) / Mica Sheet 0.4T	
8			Heater Wire / 10.8-11.4 Ω /M 33.2-35.1 Ω	
9			Conductive Plate "A" / Electrol Ysis Steel 0.4T	
10			Rivet (E) /NI-PlatedSteel OD6.2 x 2.5	
11			Moving Mesh / Chromed Plated Steel Wire Dia2.0	
12			Left Inside Top Plate / T0.4MM SUS430	
13			Ring Terminal / RT6503204	
14			Fibre Glass Sleeving / ESG-IU LD4x20MM	
15			Mica (MID) / MICA SHEET 0.4T	
16			Heater Wire / 13.8-14.4 Ω /M 48-50.1 Ω	
17			Left Side Panel / Zinc Plate Steel 0.4T	
18			Conductive Plate "F" / Electrol Ysis Steel 0.4T	
19			Mica "G" / Mica Sheet 0.4T	
20			Mica "F" / Mica Sheet 0.4T	
21			Fibre Glass Sleeving / ESG-IU LD4x45MM	
22			Silicon Wire / 18#AWG UL3122 White L:380+200+10+180 MM	
23			Prolate Terminal / TT3500005	
24			Conductive Plate "E" / Electrol Ysis Steel 0.4T	
25			Front Rear Wall / Chrome Steel 0.4T	
26			NUT / M3	
27			Fibre Glass Sleeving / ESG-IU LD5x55MM	
28			Silicon Wire / 18#AWG UL3122 White L:380+200+10+180 MM	
29			Prolate Terminal / TT3500005	
30			Conductive Plate "E" / Electrol Ysis Steel 0.4T	
31			Front Rear Wall / Chrome Steel 0.4T	
32			NUT / M3	
33			Fibre Glass Sleeving / ESG-IU LD5x55MM	
34			Silicon Wire / 18#AWG UL3122 White L:180+10+60 MM	
35			Bottom Panel / Zinc Plate Steel 0.8T	
36			Wire / 22#AWG L: 100 mm Yellow+Green	
37			E-Plate / SI-Electrolysis Steel 0.5T	
38			Bobbin / Nylon	
39			Machine Screw / M3.0X14TT"+	
40			Enamelled Copper Wire / 0.11MM Class 37# 80ohm 4.03G	
41			Crumb Tray Handle / PP	
42			Rivet (H) / Ni-Plated Steel Od2.4X4	
43			Crumb Tray / Zinc Plate Steel 0.4T	
44			Attractive Holder "B" /PBT	
45			Magnet Sheet "U" / Electrol Ysis Steel 1.0 T	
46			Attractive Holder "A" /PBT	
47			Switch Holder / Zinc Plate Steel 1.2T	
48			Moving Plate / Zinc Plate Steel 0.8T	
49			Bread Carriage / Zinc Plate Steel 0.6T	
50			Mica "H" / Mica Sheet 0.4T	
51			Mesh Spring / Ø 0.8 mm	
52			Cushion Spring "A" / Spring DIA 0.6x7x12.6L	

Artikel-Beschreibung : Toaster Modell ARIS 4
 Artikel-Nr. : 282-1055



Nr.	LI Artikel NR.	Artikel NR.	Beschreibung	Artikel Beschreibung
53				Right Side Panel / Zinc Plate Steel 0.4T
54				Pull Spring "c" / Spring DIA 0.5x7x21.5L
55				Shaft / Dia 44.X146 MM
56				Silicon Wire / 18#AWG UL3122 White L:180MM
57				Fibre Glass Sleeving / ESG-IU LD4x30MM
58				Wrapping Tie / 80MM Nylon Tie
59				NUT / M3
60				PCB Bracket / PP
61				Time Button / PP
62				Cancel Button / PP
63				Control Panel / PP
64				Push Knob / PP
65				Self-Tapping Screw / D3.0X6PT"+
66				Time Knob / PP
67				Break Sheet / 0.3T Phosphot Steel
68				Flat Recptable / SRT1870804
69				Conection Terminal / 0.8 71310-BS
70				Switch Terminal / Brass 0.8T
71				Rived (D) NI-Plated Steel OD2 5 X 7.50
72				Fibre Glass Sleeving / ESG-IU LD4x55MM
73				Contact Rived / Silver Plated Copper 1.5X1.5X0.3T
74				Rivet (B) / NI-Plated Steel OD2.5x10.5
75				Switch Housing / Nylon
76				Self-Tapping Screw / D3.0X12PA"+
77				External Washer / OD5.5XID3.2
78				Conductive Sheet / Brass 0.8T
79				Switch Pess Arm / Nylon
80				Switch Spring / Stainless Steel DIA 0.7 L:33
81				Machine Screw M3.=X6PM "+
82				Silicon Wire / 18#AWG UL3122 White L:200MM
83				Self-Taping Screw / D3.0X8PA"+
84				Self-Taping Screw / D3.0X14PA"+
85				Strain Relief / PP
86				PCB / 94V0 1.6T
87				Fibre Glass Sleeving / ESG-IU LD6x50MM
88				Power Cord / 16AWG*2C UL
89				Rubber Foot / Rubber
90				Machine Screw / M3.0x10PM"Δ"
91				Bottom / PP
92				Right Inside Top Plate / Chrome Steel 0.4T