

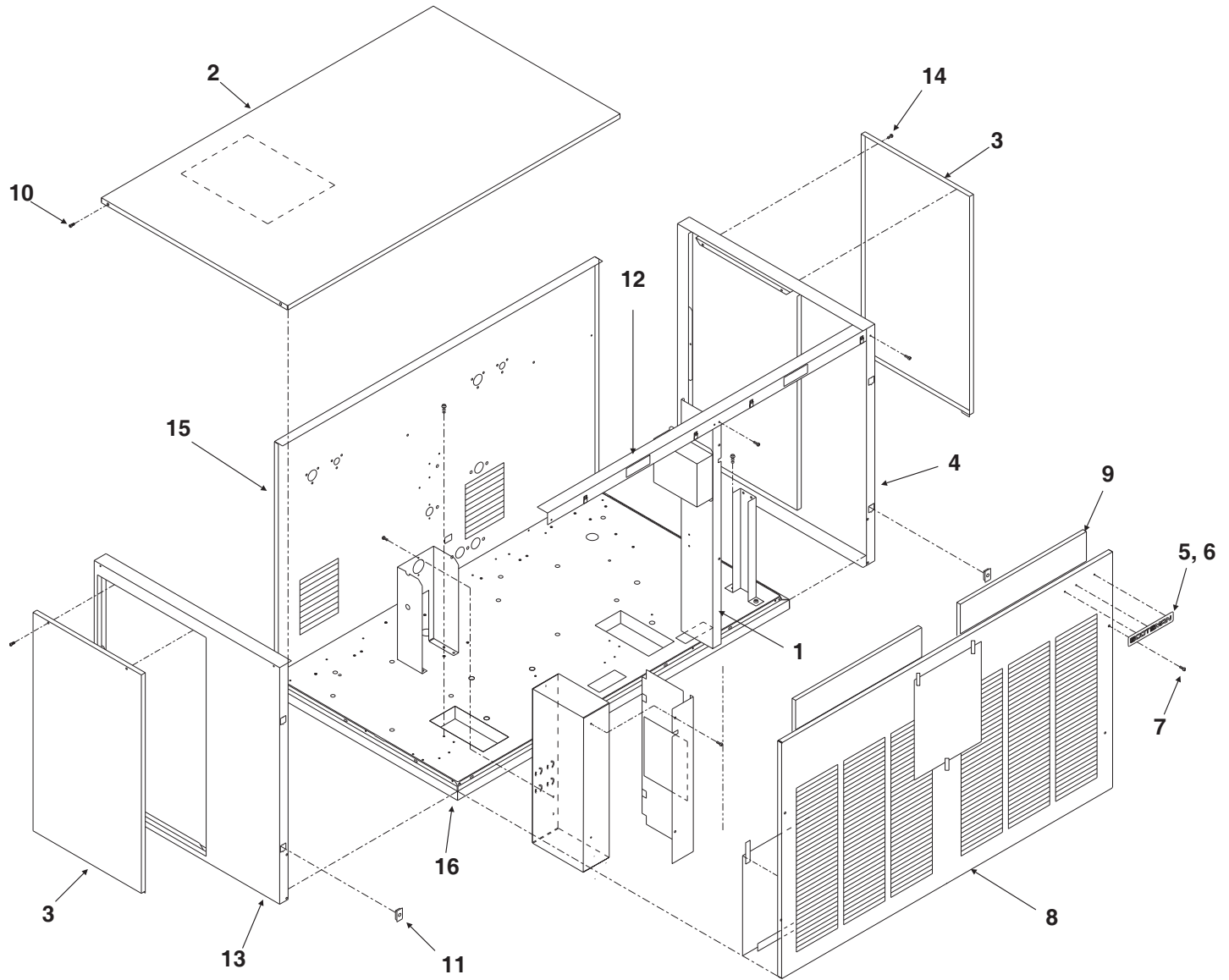
NME1854 & FME2404 SERVICE PARTS

This parts list contains the service parts and wiring diagrams for this model.
Water cooled condensers changed between the A and B series.
Check the model number in question to be sure that it is applicable to this parts list.

TABLE OF CONTENTS

| | |
|--------------------------------------|----|
| Cabinet | 2 |
| Air Cooled Refrigeration | 3 |
| Water Cooled Refrigeration | 4 |
| Water System | 5 |
| Gearmotor | 6 |
| NME Evaporator | 7 |
| FME Evaporator | 8 |
| Control Box | 9 |
| Wiring Diagrams | 10 |

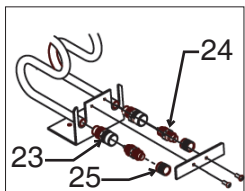
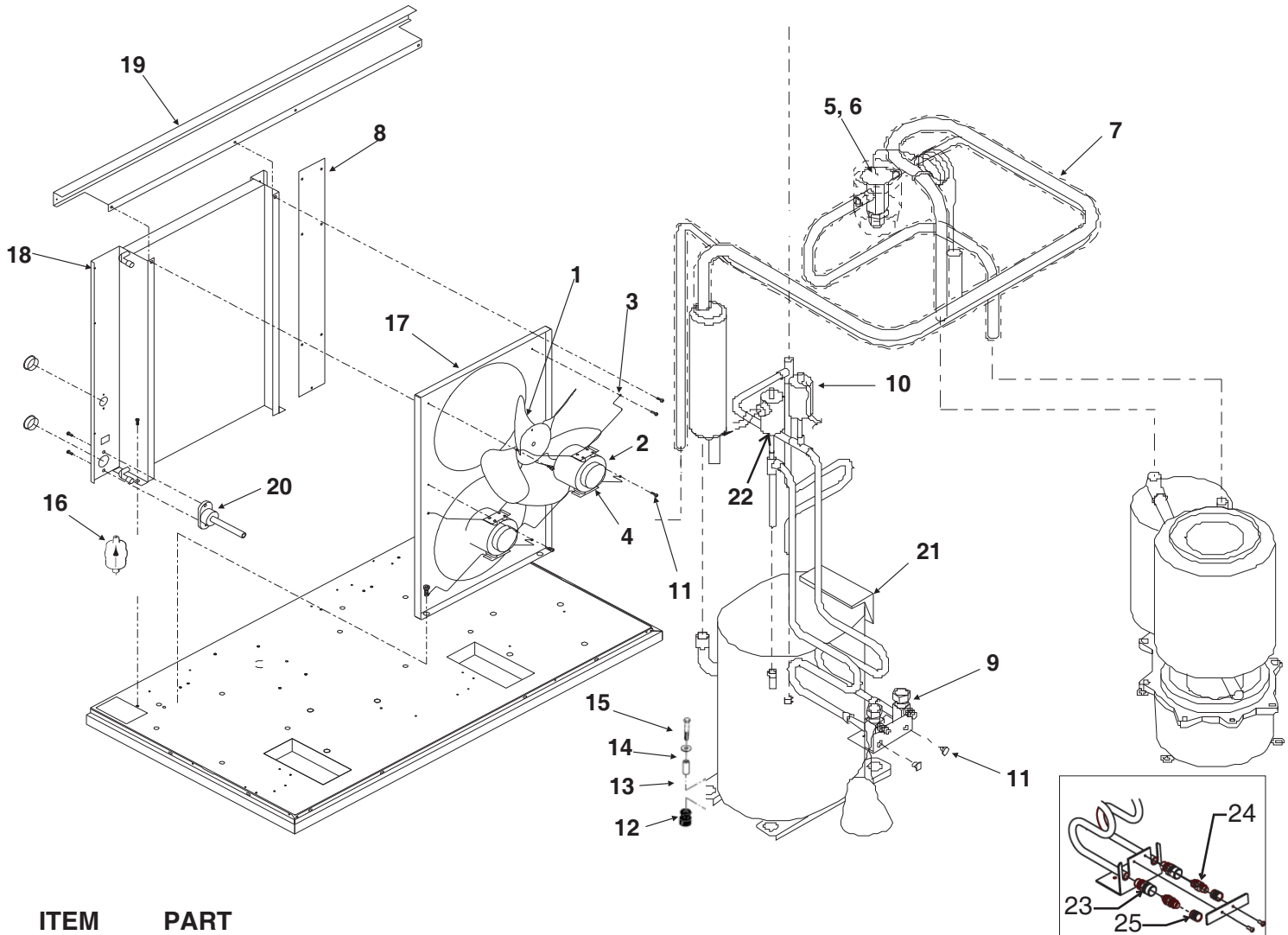
NME1854 & FME2404 SERVICE PARTS Cabinet Assembly



| ITEM NUMBER | PART NUMBER | DESCRIPTION | ITEM NUMBER | PART NUMBER | DESCRIPTION |
|-------------|-------------|------------------------|-------------|-------------|-----------------------|
| 1 | A34286-001 | Center Support | 8 | A34294-002 | Front Panel, S.S. |
| 2 | A32461-002 | Top Panel, S.S. | 9 | 02-2976-01 | Air filter |
| 3 | A34038-002 | Service Panel, S.S. | | 03-1660-01 | Clip for filter |
| 4 | A33292-002 | Right Side Panel, S.S. | 10 | 03-1531-01 | Screw |
| 5 | 03-0271-00 | Speed Clip | 11 | 02-0836-00 | Catch |
| 6 | 15-0808-01 | Emblem | 12 | A34287-001 | Support |
| 7 | 03-1419-22 | Screw | 13 | A32435-002 | Left Side Panel, S.S. |
| | | | 14 | 03-1404-12 | Screw |
| | | | 15 | A36517-002 | Back panel (WC) |
| | | | 16. | A36554-001 | Base |

NME1854 & FME2404 SERVICE PARTS

Air Cooled Refrigeration



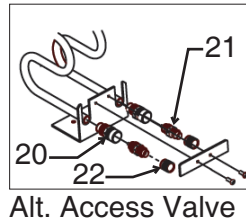
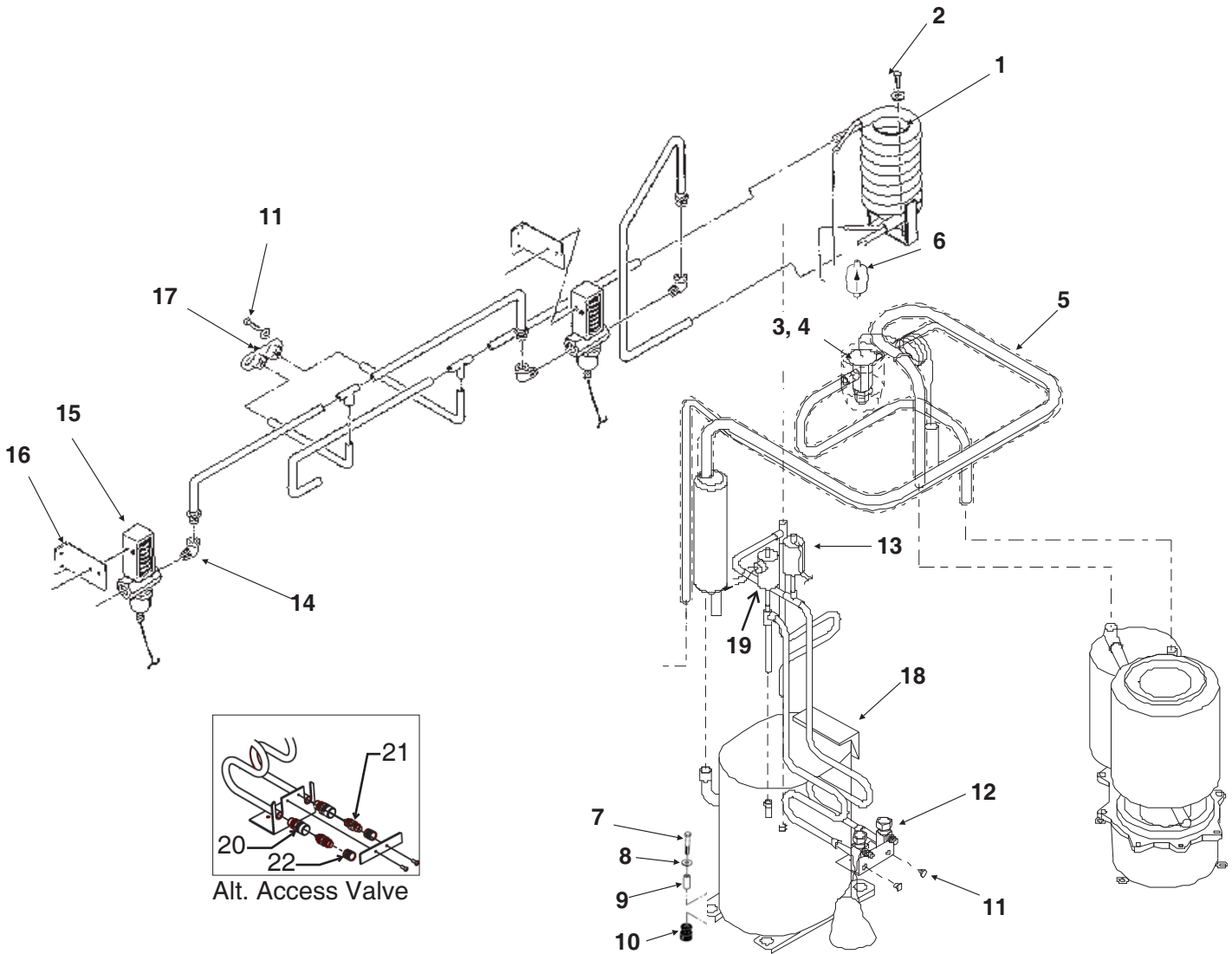
Alt. Access Valve

| ITEM NUMBER | PART NUMBER | DESCRIPTION |
|-------------|-------------|--------------------------|
| 1 | 18-3815-01 | Fan Blade |
| 2 | 12-1576-02 | Fan Motor |
| 3 | 02-2378-01 | Fan Bracket |
| 4 | 03-1531-01 | Screw |
| 5 | A32961-020 | Insulation Kit (3 piece) |
| 6 | 11-0488-21 | Thermo Expansion Valve |
| 7 | A36496-001 | Suction Line |
| 8 | A34285-001 | Filler panel |
| 9 | 16-0832-20 | Access valve |
| 9a | 16-0832-02 | Stem cap |
| 9b | 16-0832-03 | Core cap |
| 10 | 11-0501-22 | Hi Pressure Cut Out |
| 11 | 03-1645-01 | Screw |
| 12 | 18-2200-28 | Grommet |
| 13 | 18-2200-27 | Sleeve |
| 14 | 03-1407-07 | Washer |
| 15 | 03-1405-20 | Cap Screw |
| 16 | 02-3319-02 | Dryer |
| 17 | A33231-001 | Fan Shroud |

| ITEM NUMBER | PART NUMBER | DESCRIPTION |
|---|-------------|---|
| 18 | 18-8717-01 | Condenser |
| 19 | A35613-015 | Condenser Support |
| 20 | 02-3692-22 | Drain fitting |
| 21 | 18-8768-22 | Compressor 208-230/60/1 Overload is internal |
| | 18-8768-24 | Compressor 200-230/60/3 Overload is internal |
| | 18-8772-26 | Compressor 230/50/1 |
| | 18-8772-21 | Overload |
| Note: Replacement compressors include a new HFC dryer, and single phase 60 Hz replacements include the starting components. | | |
| 22 | 11-0502-21 | Low pressure cut out |
| 23 | 16-1137-01 | Access valve body |
| 24 | 16-1139-01 | Core |
| 25 | 16-1140-01 | Cap |

NME1854 & FME2404 SERVICE PARTS

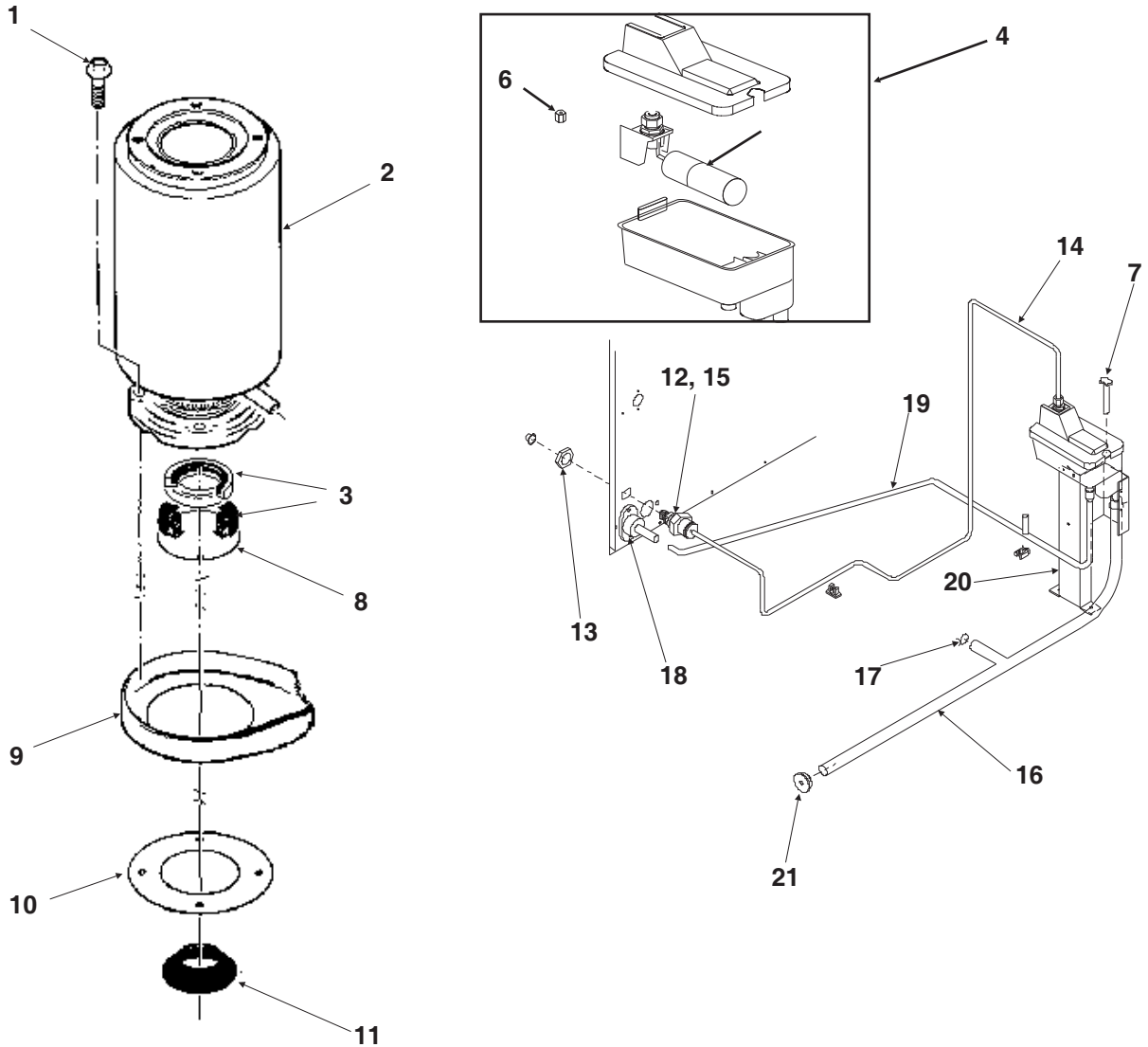
Water Cooled Refrigeration



| ITEM NUMBER | PART NUMBER | DESCRIPTION | ITEM NUMBER | PART NUMBER | DESCRIPTION |
|-------------|-------------|--------------------------|-------------|-------------|--|
| 1 | 18-8718-25 | A series WC condenser | 13 | 11-0501-22 | Hi Pressure Cut Out |
| | 18-8873-21 | B series WC condenser | 14 | 16-0401-02 | Elbow |
| 2 | 03-1645-01 | Screw | 15 | 11-0478-01 | Water Reg. Valve |
| 3 | 11-0488-21 | Thermo Expansion Valve | 16 | A34341-001 | Bracket |
| 4 | A32961-020 | Insulation Kit (3 piece) | 17 | A32282-004 | Drain Assembly |
| 5 | A36496-001 | Suction Line | 18 | 18-8768-22 | Compressor 208-230/60/1 |
| 6 | 02-3319-02 | Dryer | | | Overload is internal |
| 7 | 03-1405-20 | Cap Screw | | 18-8768-24 | Compressor 200-230/60/3 |
| 8 | 03-1407-07 | Washer | | | Overload is internal |
| 9 | 18-2300-27 | Sleeve | | 18-8772-26 | Compressor 230/50/1 |
| 10 | 18-2200-28 | Grommet | | 18-8772-21 | Overload |
| 11 | 03-1645-01 | Screw | | | Note: Replacement compressors include a new HFC |
| 12 | 16-0832-20 | Access valve | | | dryer, and single phase 60 Hz replacements include |
| 12a | 16-0832-02 | Stem cap | 19 | 11-0502-21 | Low pressure cut out |
| 12b | 16-0832-03 | Core cap | 20 | 16-1137-01 | Access valve body |
| | | | 22 | 16-1139-01 | Core |
| | | | 25 | 16-1140-01 | Cap |

NME1854 & FME2404 SERVICE PARTS

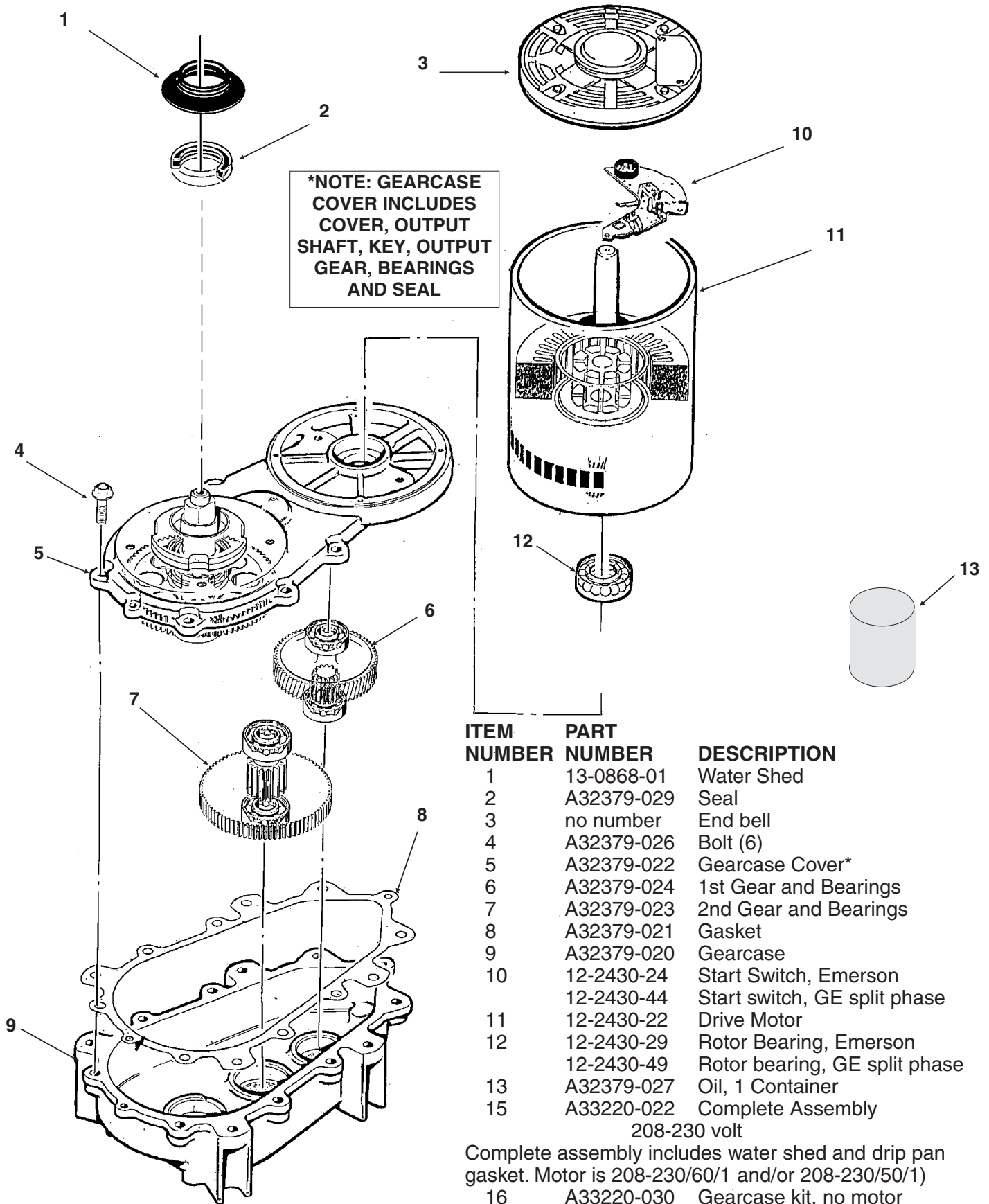
Water System



| ITEM NUMBER | PART NUMBER | DESCRIPTION | ITEM NUMBER | PART NUMBER | DESCRIPTION |
|-------------|-------------|----------------------------------|-------------|-------------|----------------------------|
| 1 | 03-1420-03 | Cap Screw | 15 | 16-1039-01 | Male connector |
| 2 | A32890-020 | Evaporator | 16 | A36154-001 | Evap. water inlet tube |
| 3 | 02-0929-23 | Water Seal | 17 | 02-1338-00 | Hose clamp |
| 4 | 02-3266-20 | Reservoir & valve | 18 | 02-3692-22 | Drain fitting |
| 5 | 02-3266-21 | Float valve | 19 | 02-3826-01 | Res. overflow hose (right) |
| 6 | 02-3266-03 | Plunger/seat | | 02-3826-02 | Res. overflow hose (left) |
| 7 | 12-2760-21 | Water Level Sensor | 20 | A36078-002 | Reservoir bracket |
| 8 | A32777-001 | Retaining Ring for Seal | 21 | 13-0840-01 | Rubber cap |
| 9 | 02-3837-01 | Drip Pan | | | |
| 10 | 13-0704-00 | Gasket | | | |
| 11 | 13-0868-01 | Water Shed | | | |
| 12 | 16-0835-01 | Inlet fitting for plastic tubing | | | |
| 13 | 03-1394-01 | Pal Nut | | | |
| 14 | 13-0895-01 | Inlet tubing, 4 ft. req. | | | |

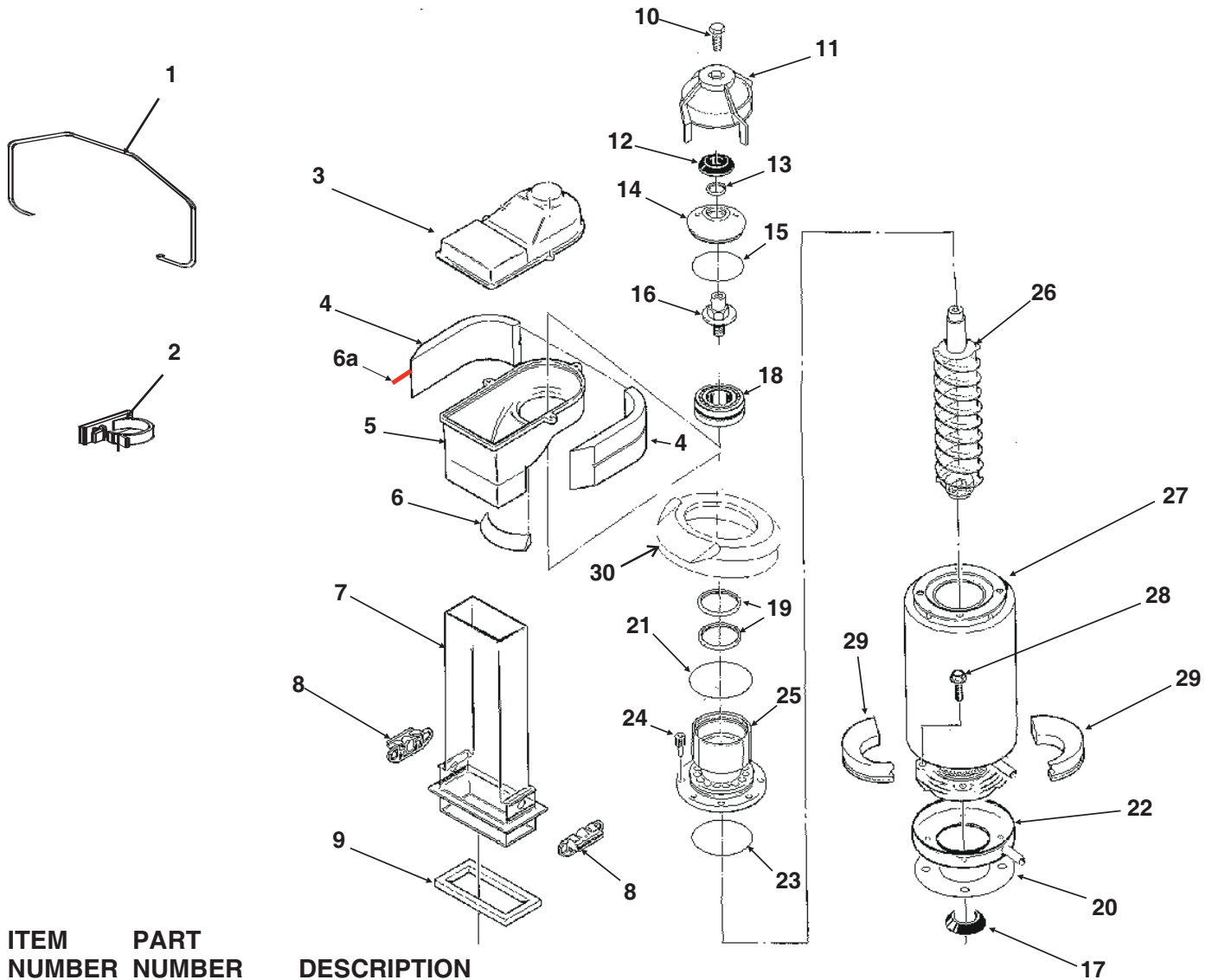
NME1854 & FME2404 SERVICE PARTS

Gearmotor



NME1854 & FME2404 SERVICE PARTS

NME Evaporator

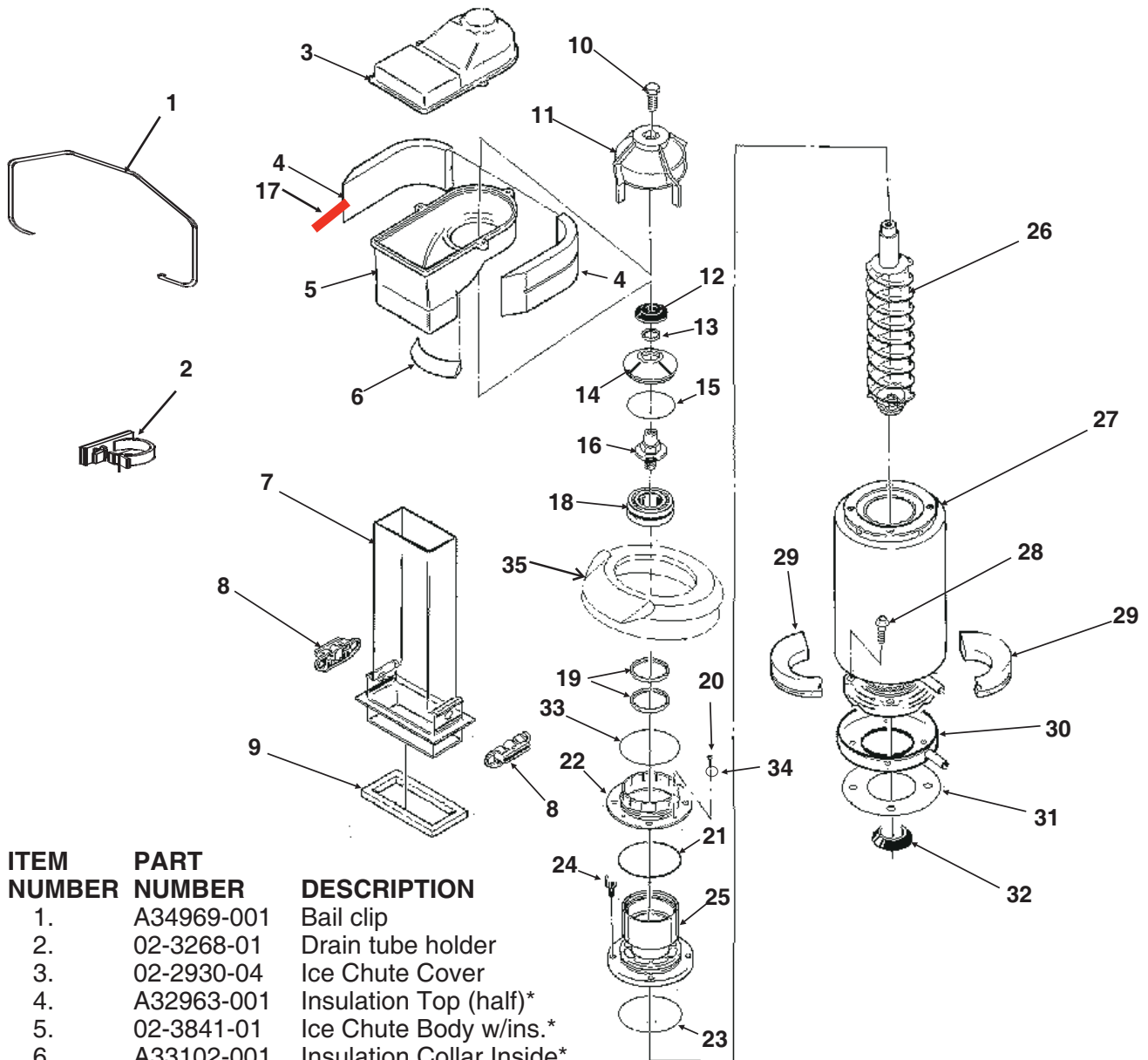


| ITEM NUMBER | PART NUMBER | DESCRIPTION |
|-------------|-------------|-------------------------------|
| 1. | A34969-001 | Bail clip |
| 2. | 02-3268-01 | Drain tube holder |
| 3. | 02-2930-04 | Ice Chute Cover |
| 4. | A32963-001 | Insulation Top (half)* |
| 5. | 02-3841-01 | Ice Chute Body with ins.* |
| 6. | A33102-001 | Insulation Collar Inside* |
| 6a | A35419-020 | Strap kit* |
| 7. | 02-2929-04 | Ice Chute Lower |
| 8. | A37708-021 | Bin Controls Assy. (set of 2) |
| 9. | A32930-001 | Chute Gasket |
| 10. | 03-1405-52 | Hex Cap Screw |
| 11. | 02-3001-01 | Ice Sweep |
| 12. | 13-0871-01 | Water Shed |
| 13. | 02-2978-01 | Lip Seal |
| 14. | 02-3128-20 | Breaker Cover |
| 15. | 13-0617-52 | O-Ring |
| 16. | 08-0660-01 | Auger Stud & washer |
| 17. | 13-0868-01 | Water Shed |
| 18. | A34559-020 | Bearing |
| 19. | 02-2977-01 | Lip Seal |
| 20. | 13-0704-00 | Drip Pan Gasket |
| 21. | 13-0617-54 | O-Ring |
| 22. | A37705-021 | Drip Pan Kit |
| 23. | 13-0617-45 | O-Ring |
| 24. | 03-1544-08 | Soc. Head Screw |
| 25. | A32900-020 | Breaker (includes 18 & 19) |
| 26. | A38071-022 | Auger |
| 27. | A32890-020 | Evaporator |
| 28. | 03-1420-03 | Cap Screw |
| 29. | A32962-001 | Insulation Bot. (half) |
| 30. | 13-0929-02 | Insulation donut* |

* Insulation changed Oct. 2000

NME1854 & FME2404 SERVICE PARTS

FME Evaporator

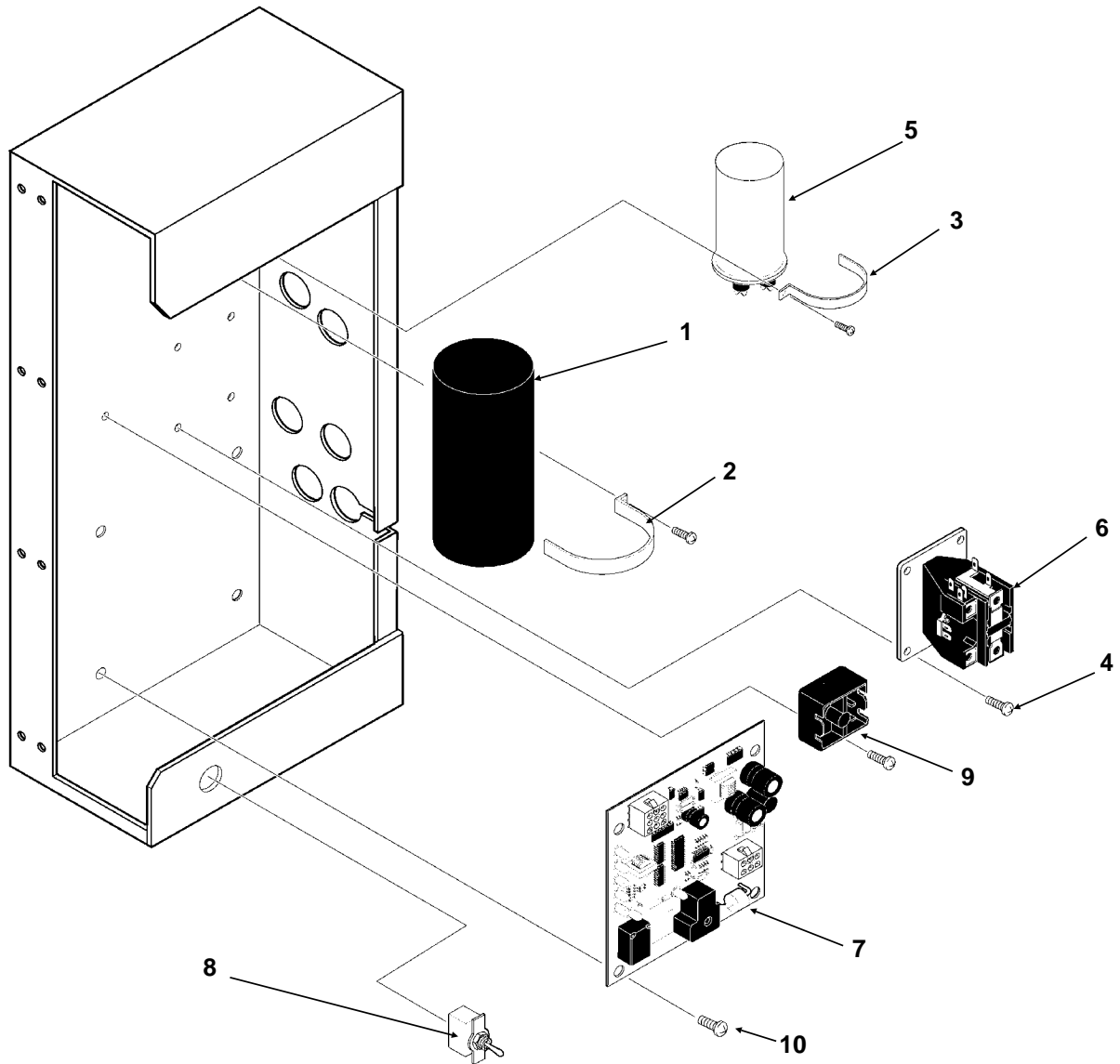


| ITEM NUMBER | PART NUMBER | DESCRIPTION |
|-------------|-------------|---------------------------------------|
| 1. | A34969-001 | Bail clip |
| 2. | 02-3268-01 | Drain tube holder |
| 3. | 02-2930-04 | Ice Chute Cover |
| 4. | A32963-001 | Insulation Top (half)* |
| 5. | 02-3841-01 | Ice Chute Body w/ins.* |
| 6. | A33102-001 | Insulation Collar Inside* |
| 7. | 02-2929-04 | Ice Chute Lower |
| 8. | A37708-021 | Bin Controls Assy. |
| 9. | A32930-001 | Chute Gasket |
| 10. | 03-1405-52 | Hex Cap Screw |
| 11. | 02-3001-01 | Ice Sweep |
| 12. | 13-0871-01 | Water Shed |
| 13. | 02-2978-01 | Lip Seal |
| 14. | 02-3128-20 | Breaker Cover |
| 15. | 13-0617-54 | O-Ring |
| 16. | 08-0660-01 | Auger Stud, thrust Washer |
| 17. | A35419-020 | Strap kit* |
| 18. | A34559-020 | Bearing |
| 19. | 02-2977-01 | Lip Seal |
| 20. | 03-1405-27 | Screw |
| | | 21. 13-0617-52 O-Ring |
| | | 22. 02-2916-01 Slotted Collar |
| | | 23. 13-0617-45 O-Ring |
| | | 24. 03-1544-08 Soc. Head Screw |
| | | 25. A34505-020 Breaker (Divider) |
| | | (includes 18 & 19) |
| | | 26. A38071-022 Auger |
| | | 27. A32890-020 Evaporator |
| | | 28. 03-1420-03 Cap Screw |
| | | 29. A32962-001 Insulation Bot. (half) |
| | | 30. A37705-021 Drip Pan kit |
| | | 31. 13-0704-00 Drip Pan Gasket |
| | | 32. 13-0868-01 Water Shed |
| | | 33. 13-0617-49 O-Ring |
| | | 34. 03-1408-36 Washer |
| | | 35. 13-0929-01 Insulation donut* |

* Insulation changed Oct. 2000

NME1854 & FME2404 SERVICE PARTS

Control Box



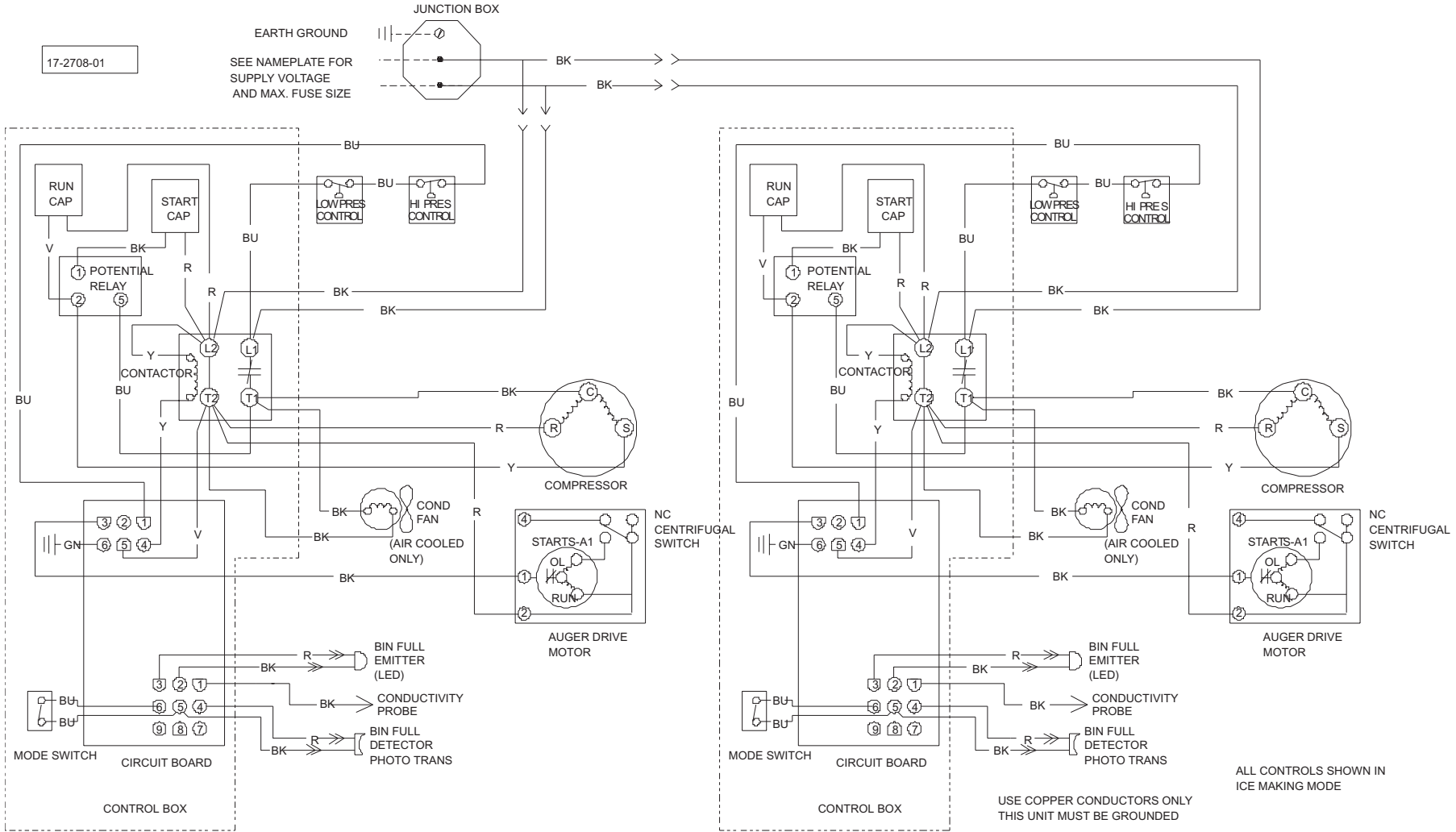
| ITEM NUMBER | PART NUMBER | DESCRIPTION | ITEM NUMBER | PART NUMBER | DESCRIPTION |
|-------------|-------------|-------------------------|-------------|-----------------|------------------------|
| 1 | 18-1901-54 | Start Capacitor, 60 Hz | 7 | 12-2835-21 | Circuit Board |
| | 18-1901-53 | Start capacitor, 50 Hz | 8. | 12-0426-02 | Mode Switch |
| 2. | A35971-001 | Start Capacitor Bracket | 9. | 18-1903-33 | Potential Relay 60 Hz |
| 3. | A35971-002 | Run Cap Bracket | | 18-1903-29 | Potential relay, 50 Hz |
| 4. | 03-1638-03 | Screw | 10 | 12-2350-01 | Stand off |
| 5. | 18-1902-45 | Run Capacitor, 60 Hz | | NOT ILLUSTRATED | |
| | 18-1902-53 | Run capacitor, 50 Hz | 11 | A37861-001 | Control Box Cover |
| 6. | 12-2469-02 | Single Phase Contactor | | | |
| | 12-2533-02 | Three Phase Contactor | | | |

NME1854 & FME2404 SERVICE PARTS

AIR AND WATER COOLED, 208-230/60/1

17-2708-01

EARTH GROUND
SEE NAMEPLATE FOR
SUPPLY VOLTAGE
AND MAX. FUSE SIZE

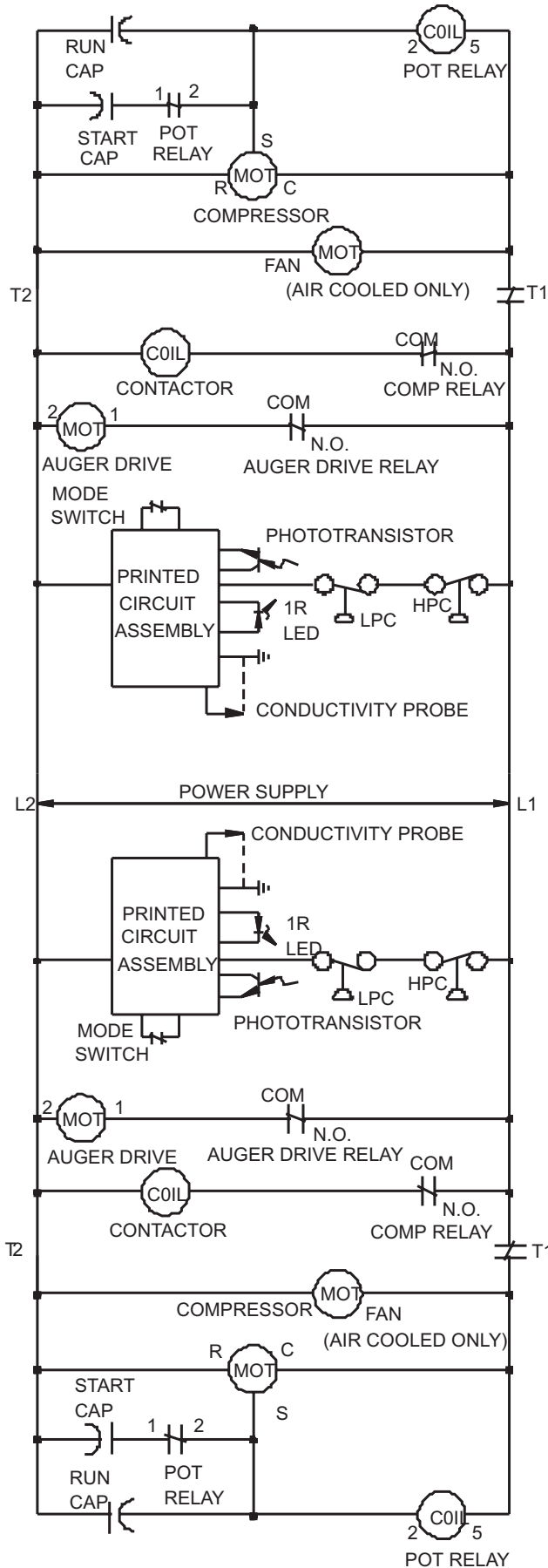


USE COPPER CONDUCTORS ONLY
THIS UNIT MUST BE GROUNDED

ALL CONTROLS SHOWN IN
ICE MAKING MODE

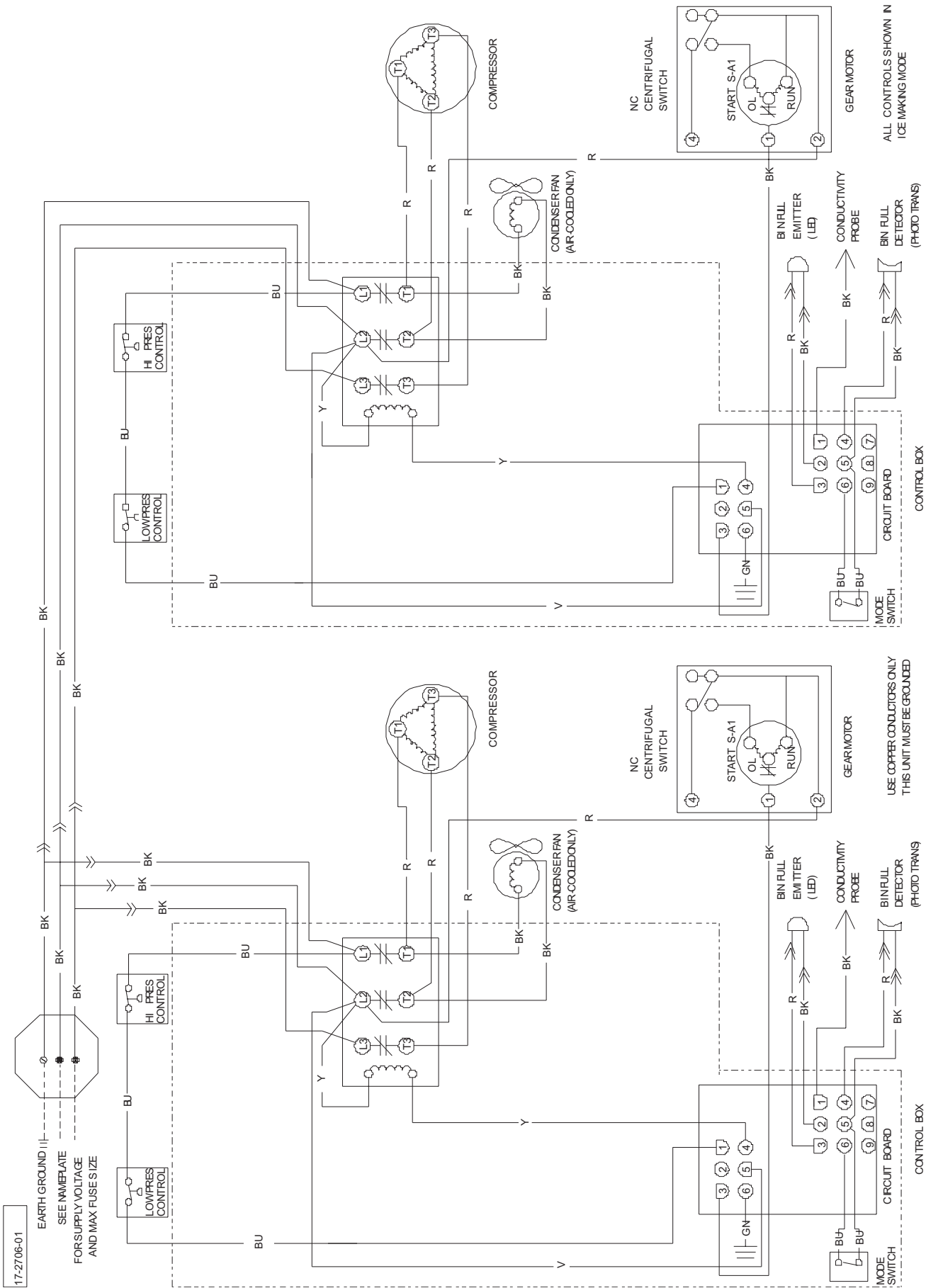
NME1854 & FME2404 SERVICE PARTS

AIR AND WATER COOLED, 208-230/60/1



NME1854 & FME2404 SERVICE PARTS

AIR AND WATER COOLED, 208-230/60/3



17-2706-01

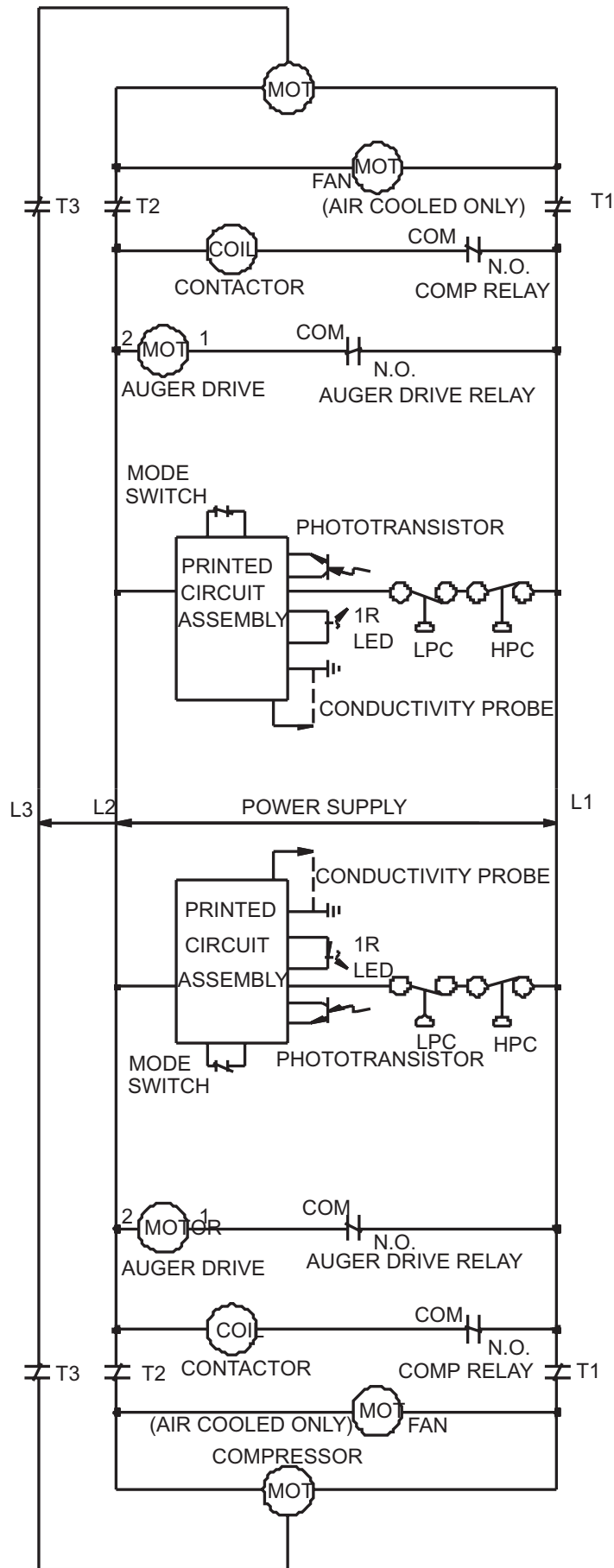
EARTH GROUND
SEE NAMEPLATE
FOR SUPPLY VOLTAGE
AND MAX FUSE SIZE

ALL CONTROLS SHOWN IN
ICE MAKING MODE

USE COPPER CONDUCTORS ONLY
THIS UNIT MUST BE GROUNDED

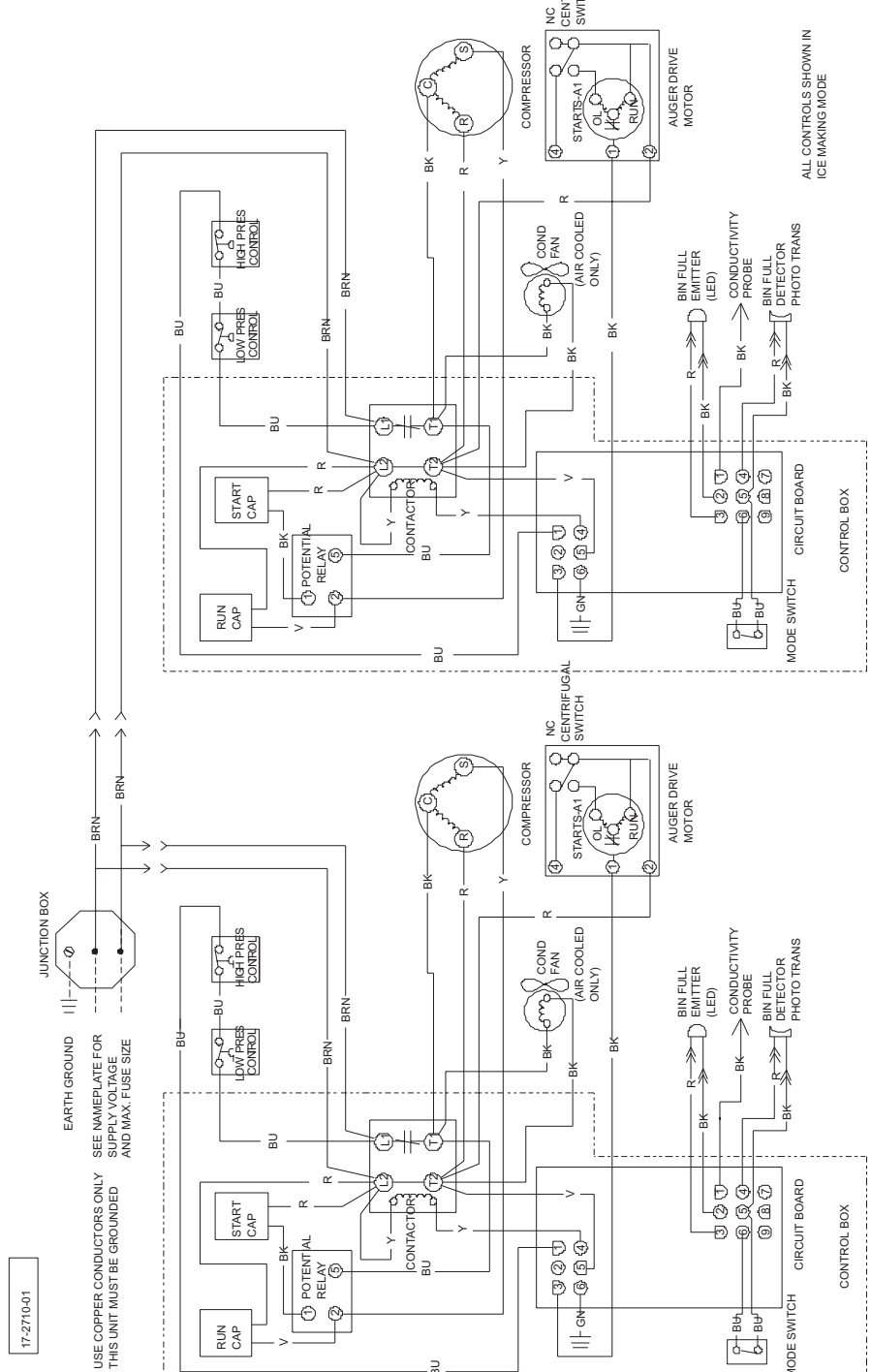
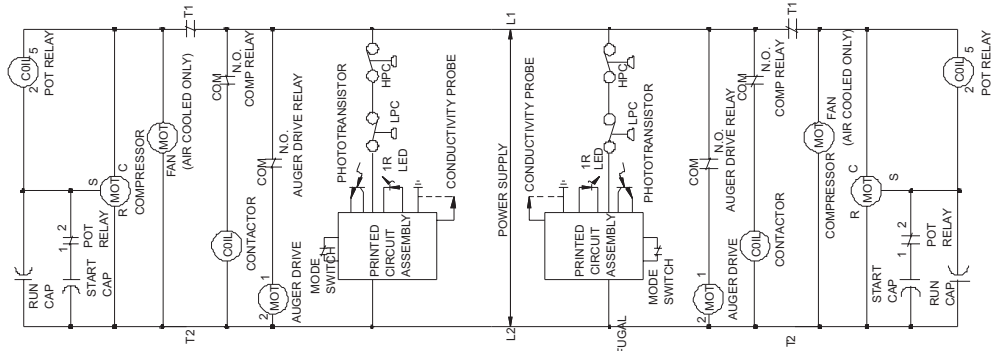
NME1854 & FME2404 SERVICE PARTS

AIR AND WATER COOLED, 208-230/60/3



NME1854 & FME2404 SERVICE PARTS

230/50/1



ALL CONTROLS SHOWN IN ICE MAKING MODE

17-2710-01

EARTH GROUND
SEE NAMEPLATE FOR SUPPLY VOLTAGE AND MAX. FUSE SIZE
USE COPPER CONDUCTORS ONLY THIS UNIT MUST BE GROUNDED