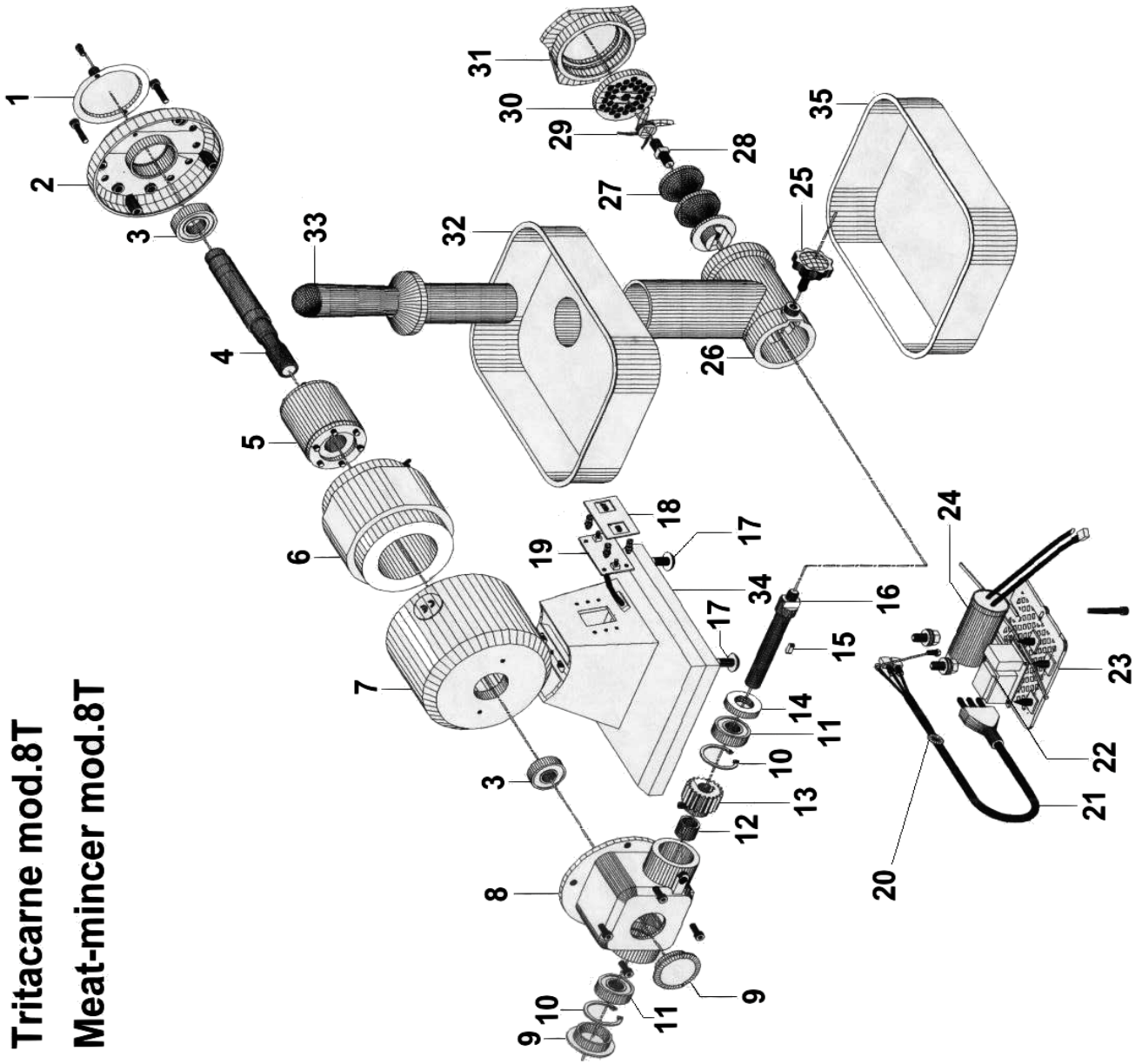


Tritacarne mod.8T
Meat-mincer mod.8T



TRITACARNE MOD.8T MEAT-MINCER MOD.8T

RIF.	CODICE / CODE	DIN - UNI	DESCRIZIONE / DESCRIPTION
1	CO3201		Disco / Disk
2	CO3223		Calotta / Cap
3	SL1799	6004 2RS	Cuscinetto / Bearing
4	CO3230		Albero / Shaft
5	CO3205	230V/1Ph/50Hz	Rotore monofase / Single-phase rotor
6	CO3203	230V/1Ph/50Hz	Statore monofase / Single-phase stator
7	CO3233		Carcassa / Housing
8	CO3251		Scatola / Box
9	CO3250		Tappo / Tap
10	CO3254	ø35	Seeger Interno / Spring Ring
11	CE755620	6202 2RS	Cuscinetto / Bearing
12	CO3269		Spessore / Spacer
13	CO3253		Ingranaggio / Gear
14	CO3255	20x35x7	Paraolio / Oil seal
15	CO2104	5x5x12	Linguetta / Key
16	CO3257		Albero / Shaft
17	CO3215		Piedino / Foot
18	CO3246		Pannello adesivo / Adhesive panel
19	CO3275		Pulsantiera / Push button
19	CO3210	01/01/01 f.p.(*)	Pulsantiera / Push button
20	CO3235		Pressacavo / Cable clamp
21	SL1671	1Ph+N+Gnd	Cavo elettrico monofase / Electric cable (single-phase)
22	CO3238		Scheda elettronica / Electronic card
23	CO3211		Fondo / Bottom
24	SL1421	12,5µF	Condensatore / Condenser
25	CO3266		Pomello / Knob
26	CO3265		Bocchettone / Sleeve
27	CO3264		Gruppo coclea ghisa / Cast iron screw shaft (assembly)
28	CO3263		Perno / Pivot
29	//////////		Coltello / Cutter
30	//////////		Piastra / Plate
31	CO3260		Ghiera / Locking ring
32	CO3259		Tramoggia / Hopper
33	CO3258		Pestello / Pusher
34	CO3267		Base / Base
35	CO3268		Recipiente / Container

(*): fuori produzione / out of production