

# AF300 SERVICE PARTS

This is the parts list for the AF300. When looking up part numbers, always check the complete model and serial numbers to be certain of ordering the correct parts.

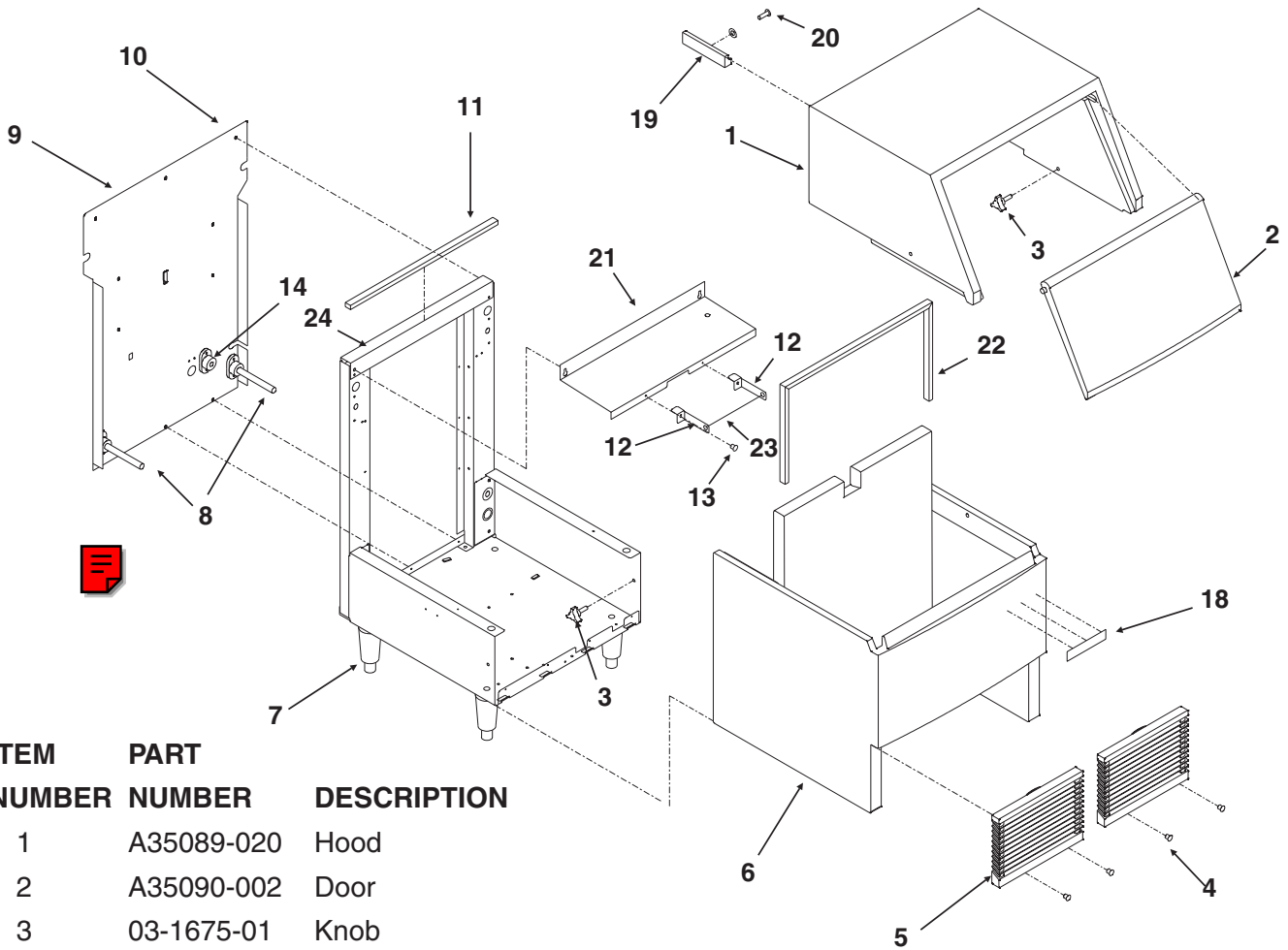
Plastic tubing is sold by the foot, order 1 unit, and 1 foot will be shipped. Order enough to cover the length required. Lengths of tubing are listed under the description column.

Note: The reservoir was changed in July of 1994 (date code -01Z). The two different reservoirs are NOT interchangeable. Check the body color of the reservoir before ordering a part.

## TABLE OF CONTENTS

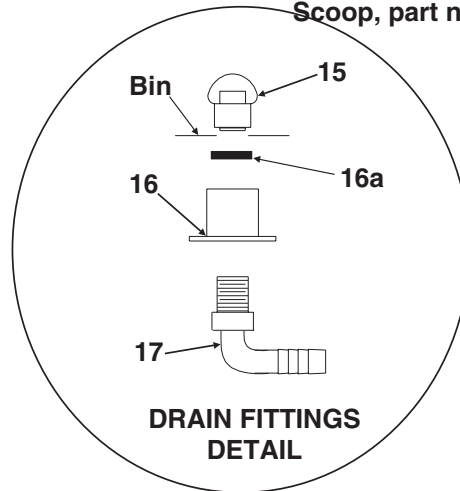
Cabinet . . . . .	Page 2
Air cooled refrigeration . . . . .	Page 3
Water cooled refrigeration . . . . .	Page 4
Reservoir tubing . . . . .	Page 5
Evaporator . . . . .	Page 6
Gearmotor . . . . .	Page 7
Control box . . . . .	Page 8
Wiring diagrams . . . . .	Page 9

# AF300 SERVICE PARTS CABINET



ITEM NUMBER	PART NUMBER	DESCRIPTION
1	A35089-020	Hood
2	A35090-002	Door
3	03-1675-01	Knob
4	03-1404-08	Screw
5	02-3153-01	Grill
6	A35088-020	Bin
7	02-3194-01	Leg kit
8	02-3692-21	Drain adaptor
9	A35248-001	Back panel
10	03-1404-08	Sheet metal screw
11	13-0595-01	Gasket, 21.75" req.
12	A35394-001	Bin control bracket
	13-0727-00	Grommet
13	03-1531-01	Screw
14	A31828-002	Water cooled drain casting
15	02-2809-01	Drain cap
16	02-3108-01	Drain fitting
16a	13-0617-09	O-ring
17	16-0822-01	Adaptor
18	15-080008-03	Emblem

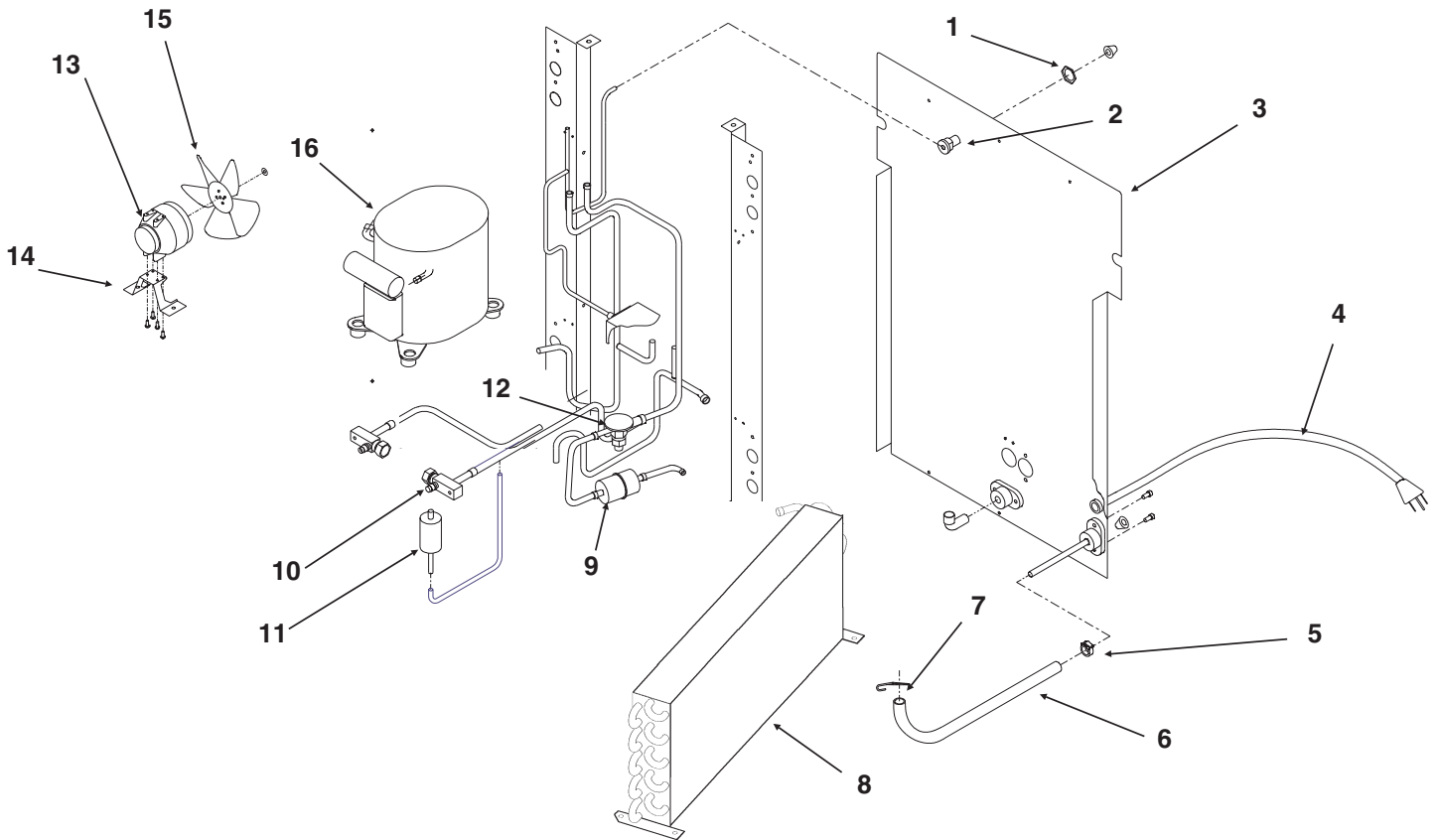
**Not Illustrated:  
Scoop, part number 02-3253-01**



20	03-1419-09	Screw
21	A35199-001	Evaporator bracket
	13-0727-00	Grommet for cap tube
22	13-0595-01	Bin gasket 36" req.
23	A35395-001	Bin control tube
24	A35452-001	Top bracket

# AF300 SERVICE PARTS

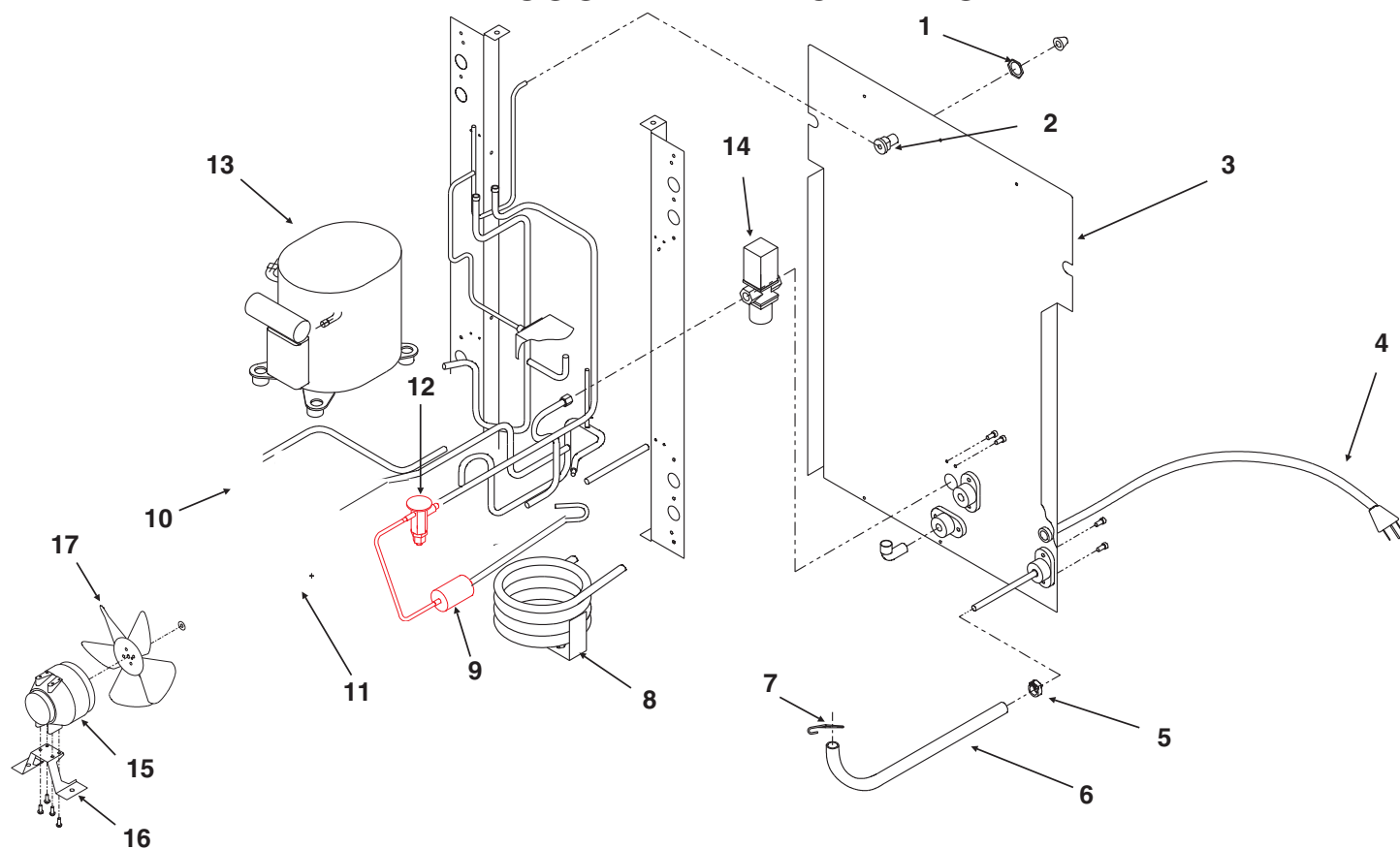
## AIR COOLED REFRIGERATION



ITEM NUMBER	PART NUMBER	DESCRIPTION	ITEM NUMBER	PART NUMBER	DESCRIPTION
1	03-1394-00	Pal nut	12	11-0473-21	Thermo exp. valve
2	A27318-001	Water inlet fitting		A32961-020	Insulation for TXV (half)
3	A35248-001	Back Panel	13	18-8709-01	Fan motor
	03-1404-08	Sheet metal screw	14	A35246-001	Fan motor bracket
4	12-1638-14	Power cord	15	18-8708-01	Fan blade
5	02-2814-08	Hose clamp	16	18-8703-20	Compressor, includes relay
6	13-0674-06	Drain hose, 21.5" req.			overload, and start capacitor
7	02-3094-01	Hose clamp		JSS5-0050-IAA-202	
8	18-8844-01	Air cooled condenser		18-1901-15	Start capacitor
	02-3193-01	Air filter (not shown)		18-1903-49	Relay
9	02-3319-01	Dryer		18-8703-50	Overload
10	16-0832-20	Access Valve			Compressor Mounting Hardware:
10a	16-0832-02	Stem cap		03-1677-01	Screw
10b	16-0832-03	Core cap		03-1407-07	Washer
11	11-0446-26	Hi press. cut out		18-2200-27	Sleeve
				18-2200-28	Grommet

# AF300 SERVICE PARTS

## WATER COOLED REFRIGERATION



ITEM NUMBER	PART NUMBER	DESCRIPTION	ITEM NUMBER	PART NUMBER	DESCRIPTION
1	03-1394-00	Pal nut	13	18-8703-20	Compressor, includes relay overload, and start capacitor
2	A27318-001	Water inlet fitting		JSS5-0050-IAA-202	
3	A35248-001	Back Panel		18-1901-15	Start capacitor
	03-1404-08	Sheet metal screw		18-1903-49	Relay
4	12-1638-14	Power cord		18-8703-50	Overload
5	02-2814-08	Hose clamp		Compressor Mounting Hardware:	
6	13-0674-06	Drain hose, 21.5" req.		03-1677-01	Screw
7	02-3094-01	Hose clamp		03-1407-07	Washer
8	18-3707-25	Water cooled condenser		18-2200-27	Sleeve
9	02-3319-01	Dryer		18-2200-28	Grommet
10	16-0832-20	Access valve	14	11-0424-01	Water regulating valve
10a	16-0832-02	Stem cap	15	12-1575-01	Fan motor (water cooled)
10b	16-0832-03	Core cap	16	A35246-001	Fan motor bracket
11	11-0446-26	Hi press. cut out	17	18-8708-01	Fan blade
12	11-0473-21	Thermo exp. valve			
	A32961-020	Insulation for TXV (half)			

# AF300 SERVICE PARTS

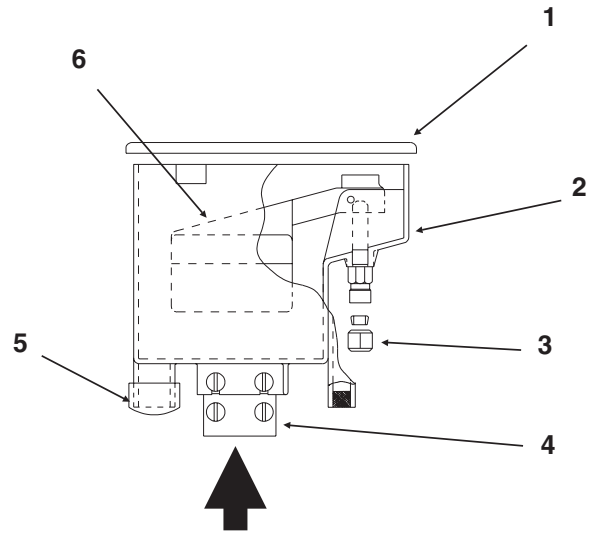
## RESERVOIR AND TUBING

ITEM NUMBER	PART NUMBER	DESCRIPTION
<b>Beige Reservoir Used Up To September 1994</b>		
1	02-2936-01	Reservoir cover
2	A32929-020	Reservoir assembly
3	no number	Compression fitting, included with item 2.
4	no number	Reservoir mounting bracket.
5	13-0230-00	Rubber cap
	02-2814-10	Hose clamp
6	A32922-001	Float assembly
	02-3190-01	Valve seat, included with float
7	13-0840-01	Rubber plug for beige reservoir
	13-0859-01	Rubber plug for clear reservoir
8	13-0674-06	Drain tube, 6" req. for beige res.
	13-0674-04	Drain tube, 12" req. for clear res.
9	02-2814-08	Hose clamp
10	13-0674-06	Outlet tube, 5" req. for beige res.
	13-0674-04	Outlet tube, 4" req. for clear res.
11	16-0670-02	Tee
12	13-0674-06	Evap. inlet tube 5" req. for beige res.
	13-0674-04	Evap. inlet tube, 6" req. for clear res.
13	13-0674-06	Overflow tube, 30" req. for beige res
	13-0079-03	Overflow tube, 32" req. for clear res.

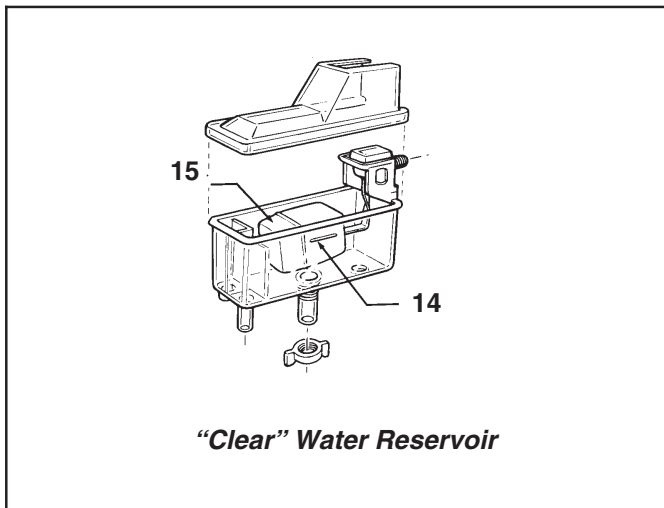
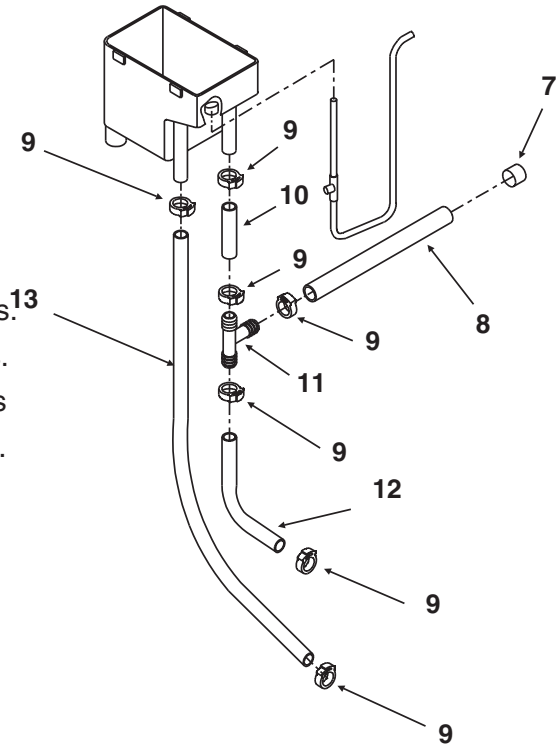
**Clear Reservoir, use began: AF300A, sn 755544-02Z**

**AF300W, sn 764423-03Z**

14	02-2217-01	Reservoir & valve
15	02-2217-02	Float valve



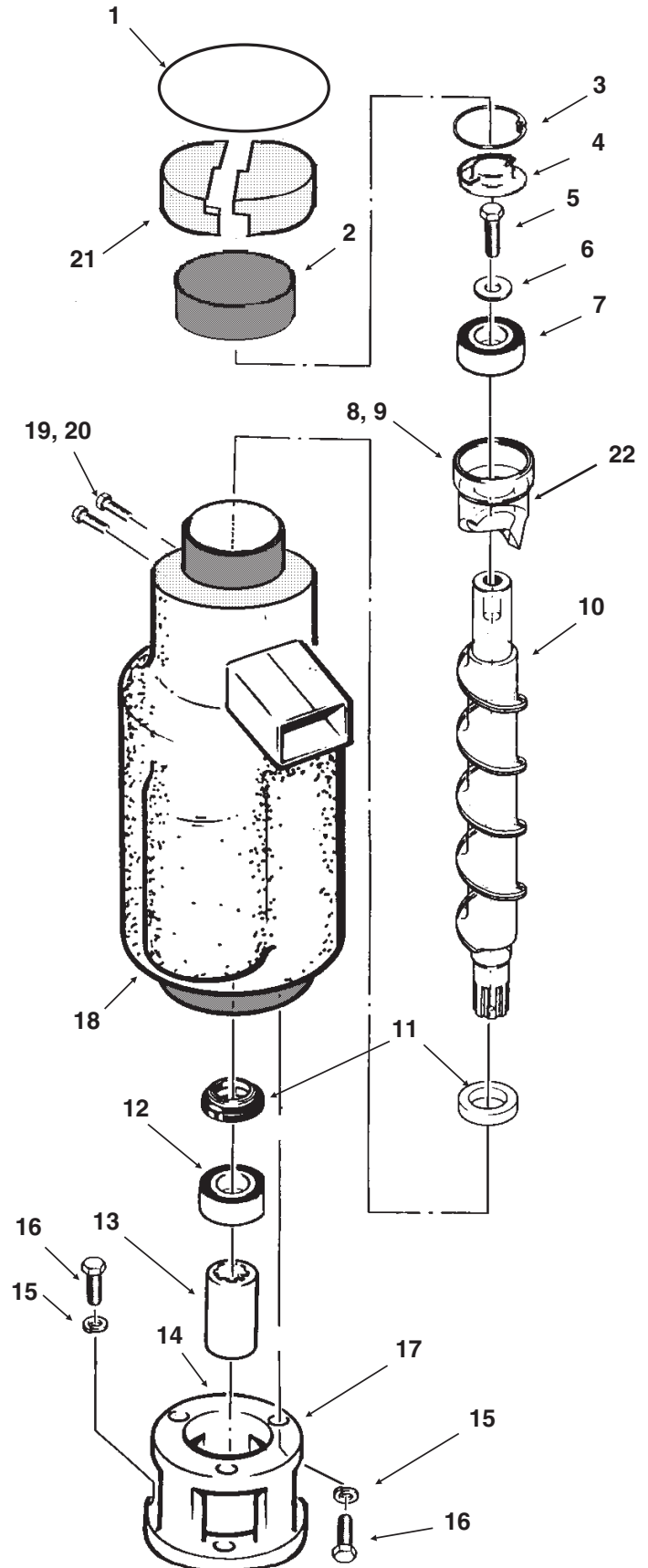
**Reservoir Details**



# AF300 SERVICE PARTS

## Evaporator

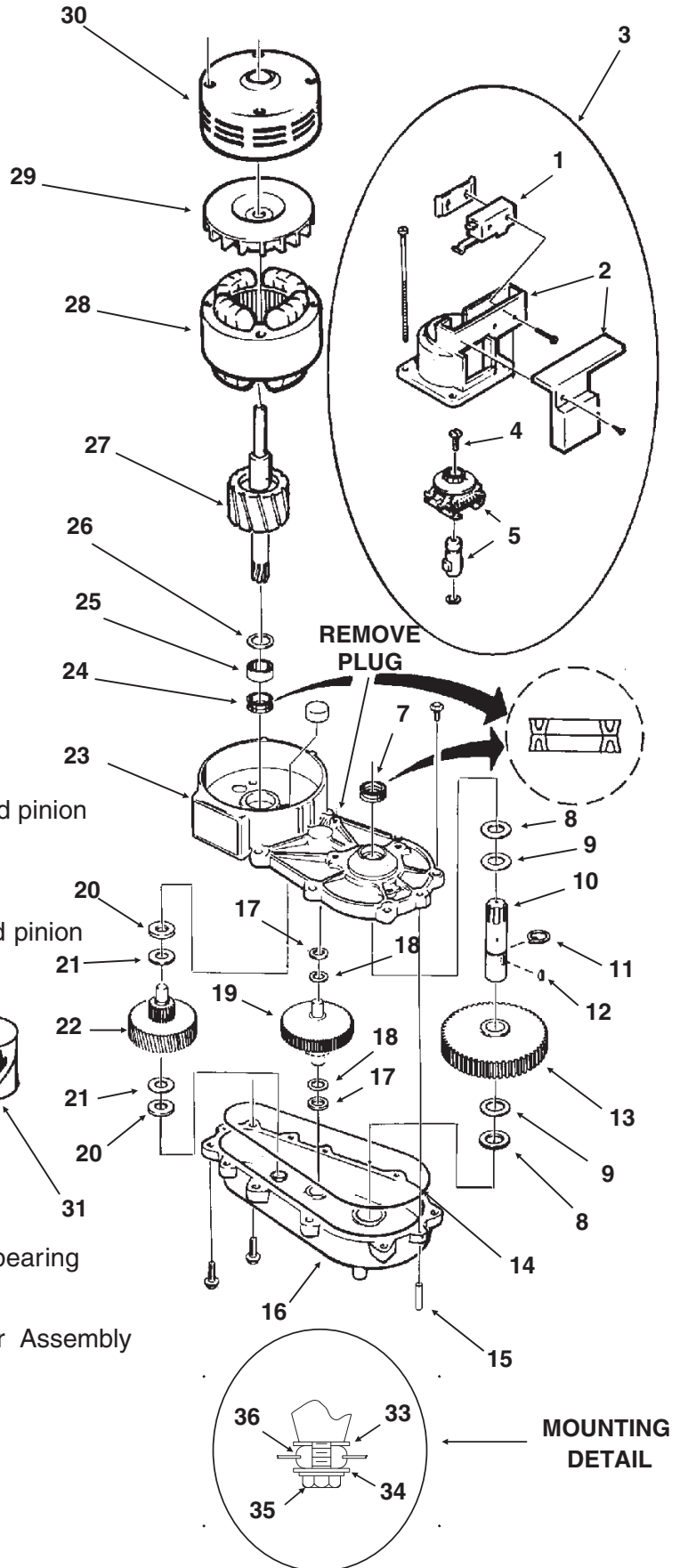
ITEM NUMBER	PART NUMBER	DESCRIPTION
1	13-0617-46	O-Ring
2	13-0887-01	Top Cap
3	03-1558-03	Retainer Ring
4	A077701-000	Cap
5	03-0758-00	Screw
6	A07699-000	Washer
7	02-0547-20	Top Bearing
8	13-0617-16	O-Ring (inside)
9	A26706-001	Breaker with Bearing
		Includes 7,8,9
10	A29480-001	Auger
11	02-1300-01	Water Seal
12	02-0417-20	Lower Bearing
13	A29915-002	Spline Coupling
14	03-1505-00	Gasket
15	03-1410-04	Washer (3)
16	03-1420-01	Cap Screw (3)
17	08-0595-01	Adapter
18	A35410-020	Evaporator*
19	03-1417-07	Washer
20	03-1403-46	Screw
21	13-0886-01	Foam cap (half)
22	13-0617-37	O-Ring, outside of breaker



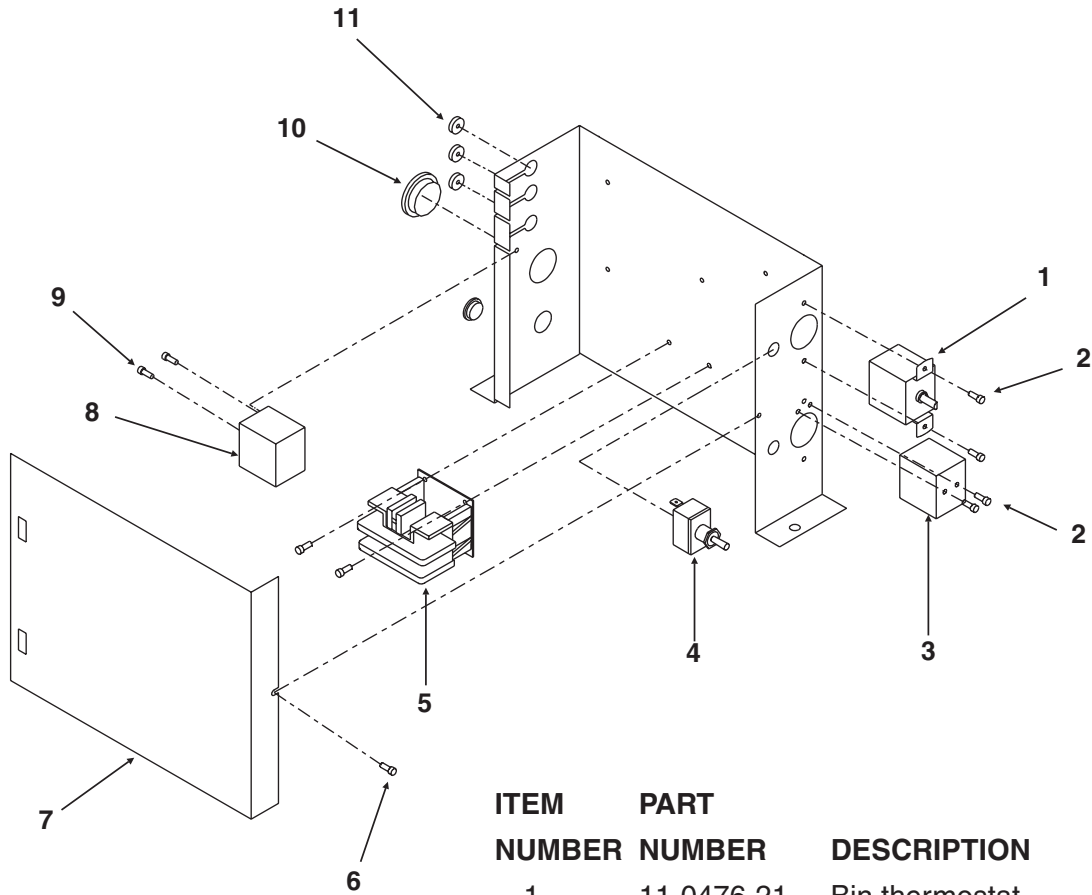
# AF300 SERVICE PARTS

## GEARMOTOR

ITEM NUMBER	PART NUMBER	DESCRIPTION
1.	12-2059-01	Switch
2.	A27494-001	Housing
3.	A27494-001	Centrifugal Sw. Kit
4.	03-1403-77	Screw
5.	A30579-001	Shaft and Actuator
6.	03-1408-36	Washer
7.	02-1503-00	Grease seal
8.	03-1408-21	Washer
9.	03-1408-04	Washer
10.	02-2445-01	Output shaft
11.	03-1515-03	Retaining ring
12.	03-1602-01	Woodruff Key
13.	02-2444-01	Output gear
14.	02-1505-00	O-ring
15.	03-0774-11	Roll pin
16.	A28166-001	Gear Case
17.	03-1408-39	Washer
18.	03-1408-40	Washer shim
19.	02-2439-01	Second gear and third pinion
20.	03-1408-41	Washer
21.	03-1408-38	Washer
22.	02-2438-01	First gear and second pinion
23.	A28165-021	Gear box cover
24.	02-3969-20	Grease seal
25.	02-1501-00	Bearing
26.	03-1408-08	Washer
27.	A37707-021	Motor kit
28.	A37707-021	Motor kit
29.	A28168-001	Fan
30.	A17047-002	Motor Housing with bearing
31.	A32379-021	Oil
32.	A31977-021	Complete Gear Motor Assembly
33.	A24295-001	Spacer
34.	03-1408-02	Washer
35.	03-1405-45	Screw
36.	13-0639-00	Grommet



# AF300 SERVICE PARTS CONTROL BOX

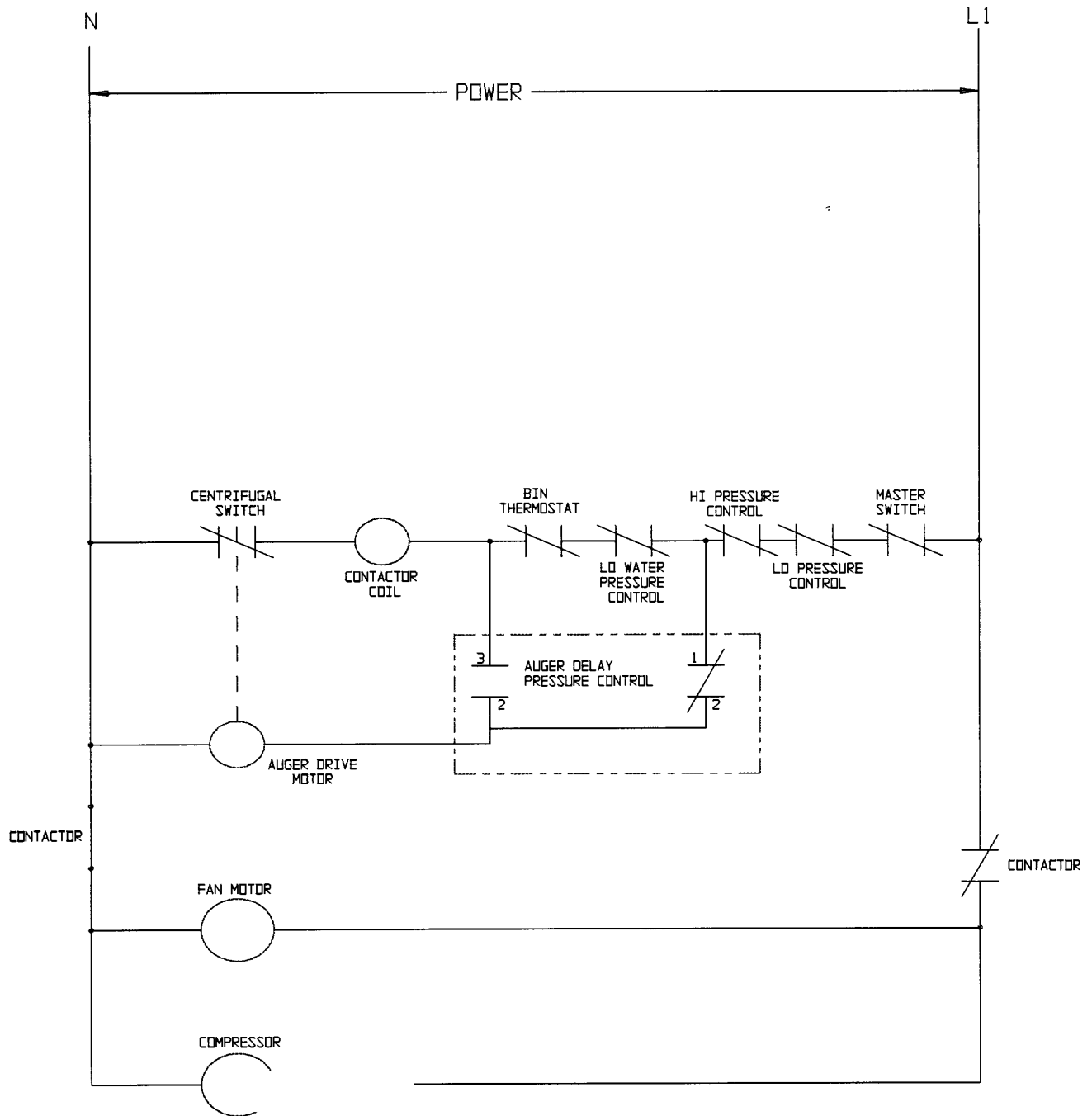


ITEM NUMBER	PART NUMBER	DESCRIPTION
1	11-0476-21	Bin thermostat
2	03-1403-15	Machine screw
3	11-0420-22	Low pressure control
4	12-0426-01	Toggle switch, spst
5	12-2469-03	Contactor
6	03-1404-29	Sheet metal screw
7	no number	Control box cover
8	11-0474-21	Auger delay control
9	03-1403-02	Screw
10	12-1213-11	Snap bushing
11	13-0727-00	Grommet
Not Illustrated and Not in the control box:		
12	11-0296-00	Water pressure switch



# AF300 SERVICE PARTS SCHEMATIC DIAGRAM

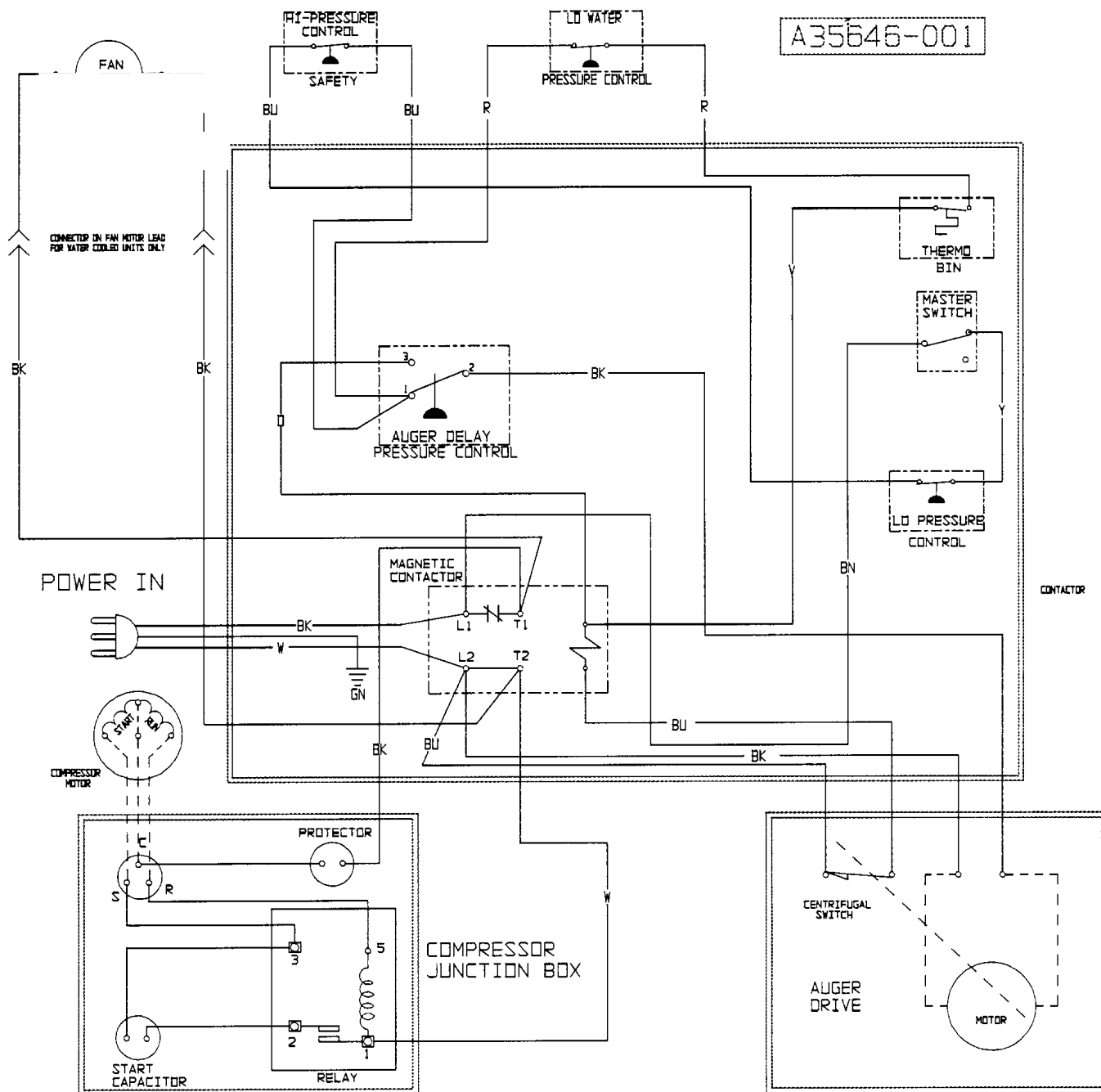
115/60/1



# AF300 SERVICE PARTS

## WIRING DIAGRAM

115/60/1



ALL CONTROLS SHOWN IN NORMAL ICE MAKING MODE  
THIS UNIT MUST BE GROUNDED