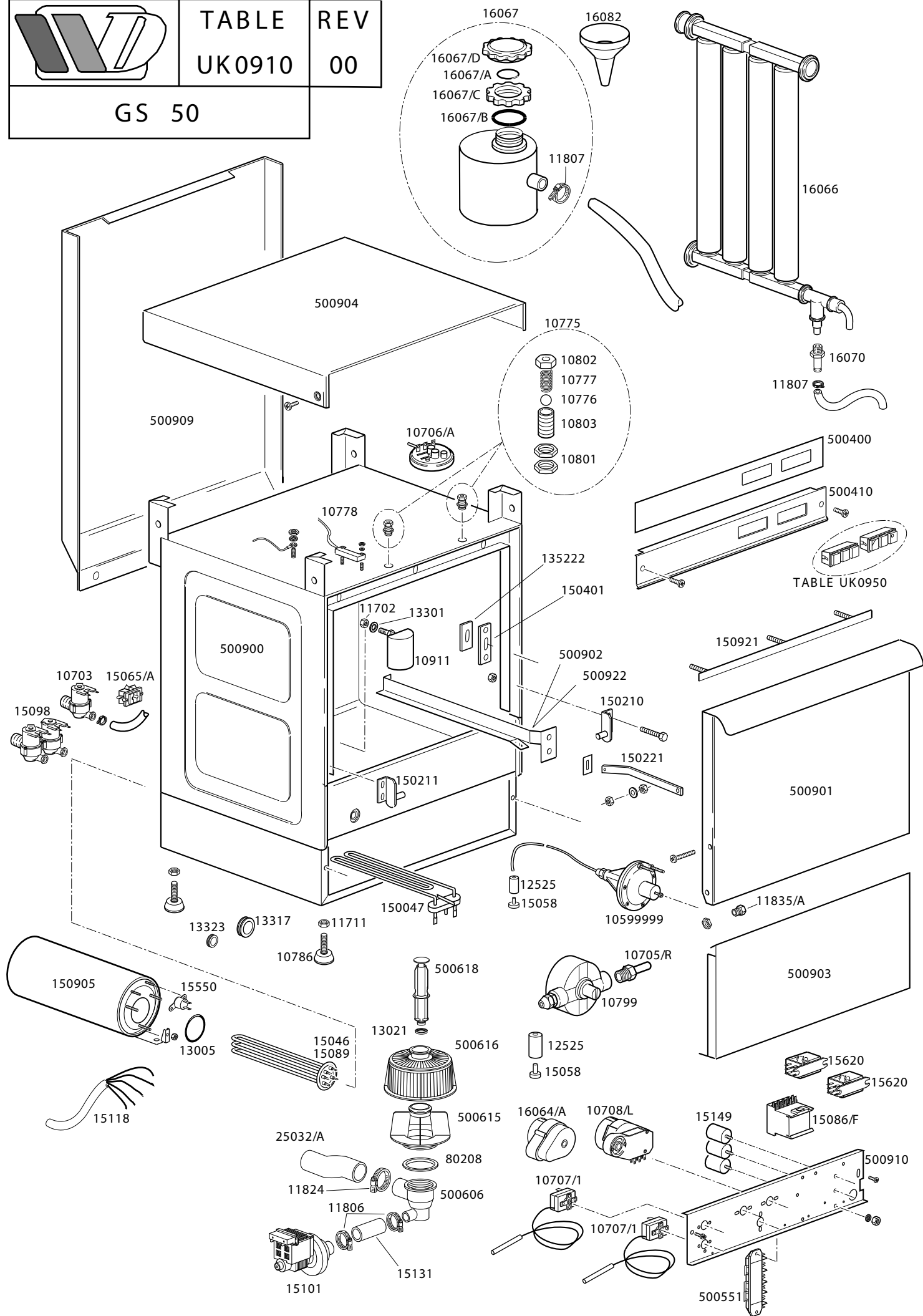
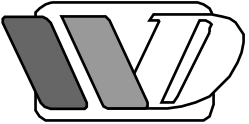
	TABLE	REV
	UK0910	00
GS 50		

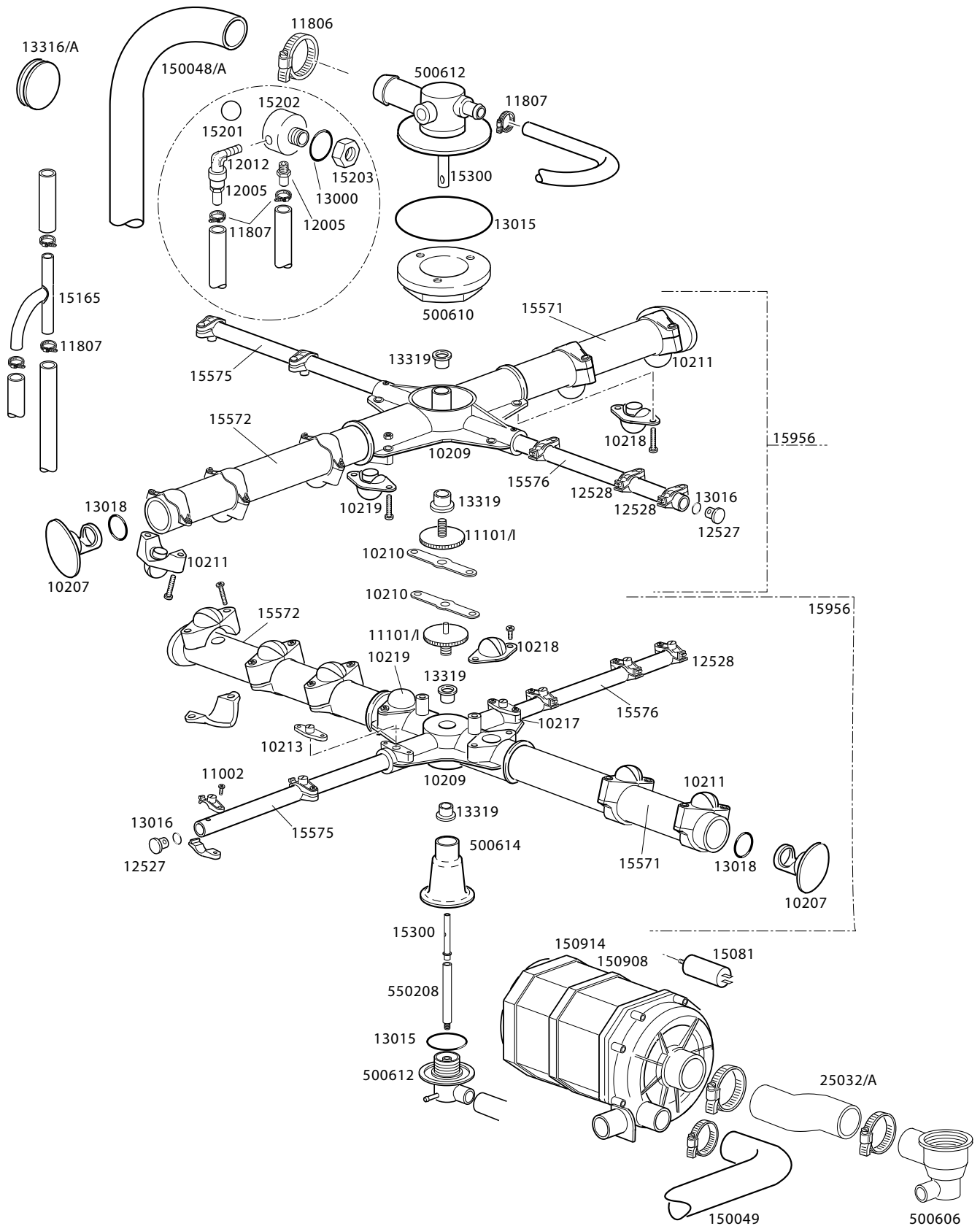


DISH WASHER GS 50

TABLE UK0910

CODE	DESCRIPTION	CODE	DESCRIPTION
10703	220V entry solenoid valve	500616	Filter
10775	Brass door hook	500618	Overflow device
10776	9,52 d. stainless steel ball	500900	Complete body
10777	Spring for door hook	500901	Complete door
10778	Reed magnetic microswitch	500902	Right guide for basket
10786	M10x25 40 d. small black foot	500903	Lower door panel
10799	3 way shining product dosing device	500904	Cover
10801	Door jack nut	500909	Back panel
10802	Door jack locknut	500910	Control panel
10803	Door jack body	500922	Left guide for basket
11111	Stainless steel screw M16x6	10599999	Shining product dosing device
11212	elf locking screw 2,9x19 inox	10705/R	8 d. pipe fitting
11702	M8 stainless steel nut	10706/A	55-30 pressure switch
11703	M4 inox nut screw	10707/1	0-90°C TR2 thermostat
11706	M6 inox nut screw	10708/L	120" rapid timer
11711	M10 zinc-plated nut	10911/B	Complete air trap
11721	M6 Self locking inox nut	11835/A	Boccola in ottone
11806	25-40 stainless steel clamp	15065/A	Cable fastener with screw
11807	12-22 stainless steel clamp	15086/B	240 V 50 Hz Remote control switch
11824	50-70 stainless steel clamp	16064/A	CDC timer
12525	Counter-weight for small filter	16067/A	OR salt container plug
13005	OR 151	16067/B	OR salt container gasket
13021	DEM 40 gasket	16067/C	Salt container ferrule
13301	14x8x1,5 d. gasket	16067/D	Salt container plug
13317	40 d. rubber cable-pass	25032/A	Connection
13323	13 d. rubber cable-pass	16047	16A Triopolar relay 230V 50/60 Hz
15046	3000W heating element	15381	150VA 0/230V - 0/400-415-440V Trasn. ←
15058	Small shining product suction filter		
15086	230V 4C remote control switch		
15089	4500w heating element		
15098	Double solenoid valve		
15099	Triple solenoid valve		
15101	Drain pump		
15118	5x2,5x2500 cable		
15131	Tube rony-flex 30-450		
15149	F3 antijamming filter		
15550	Conveyor safety thermostat		
15620	16A bi-polar relay		
16065	Salt container(Low version)		
16066	1 liter 4 element decalcifier		
16070	Complete non-retourn valve		
16082	Funnel		
80208	95x75x3 gasket		
135222	Door-stop		
150047	2700W heating element		
150210	Right hinge door		
150211	Left hinge door		
150221	Door rod		
150401	Guide for bent rod		
150905	Complete boiler		
150921	Angular for gasket door		
500400	Silckscreem processed grill		
500410	Support control panel		
500551	6 poles FV122 terminal board		
500606	Floor drain		
500615	Ferrule with filter connection		

	TABLE	REV
	UK0930	00
GS 50		



DISH WASHER GS 50

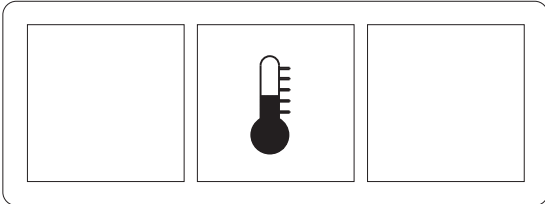
**TABLE
UK0930**

CODE	DESCRIPTION	CODE	DESCRIPTION
10207	28 d. plastic plug		
10209	4 way big rotating arm		
10210	Plate for rotor		
10211	28 d. complete nozzle		
10213	10 d. open flat nozzle		
10217	10 d. closed nozzle		
10218	28 d. open flat nozzle		
10219	28 d. closed nozzle		
11002	M4x12 stainless steel spax screw		
11806	25-40 stainless steel clamp		
11807	12-22 stainless steel clamp		
11824	50-70 stainless steel clamp		
12005	1/4 rubber-holder for 10 d. pipe		
12012	1/4 M-F pipe fitting		
12527	10 d. plastic plug		
12528	Complete rinse nozzle		
13000	OR 3125		
13015	OR heating element gasket		
13016	OR 103		
13018	OR 2087		
13319	PTFE+CB H11 sliding washer		
15081	12,5 microfarad condenser		
15165	13 d. 3 way turnout		
15201	17 d. valve sphere		
15202	40x33 d. DVGW brass pipe fitting		
15203	30 DVGW brass nut for pipe fitting		
15300	10x51 d. lower rinse axis		
15571	28 d. right wash pipe		
15572	28 d. left wash pipe		
15575	Right rinse pipe		
15576	Left rinse pipe		
15956	Loer wash-rinse group		
150049	Lower coupling washing		
150908	0,7HP pump		
150914	0,7HP pump with hole		
500606	Floor drain		
500610	Ferrule turret		
500612	Upper turret		
550223	Lower coupling L=122		
550226	Rinse connection axis		
11101/I	Knurled stainless steel group screw		
13316/A	Blind gasket		
150048/A	Upper pipe delivery		
25032/A	Coupling		

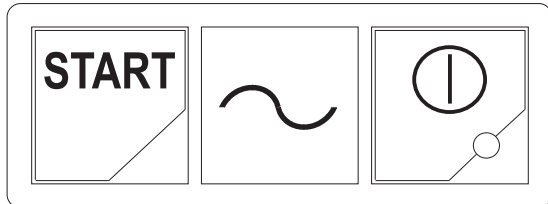


	TABLE	REV
	UK0950	00
SWITCHES GS50-GS45-GS40		

SERIES GS50-GS45-GS40

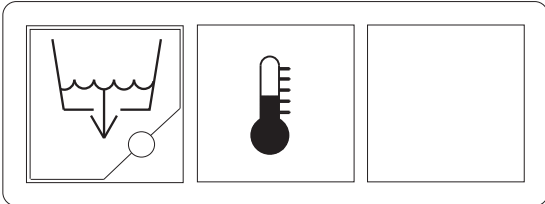


15889

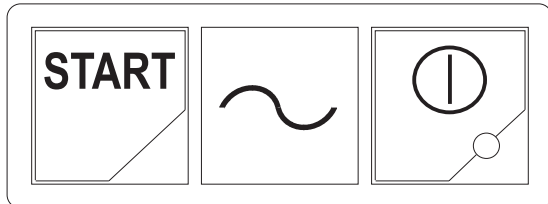


15888

SERIES GS50-GS45-GS40 DRAIN PUMP

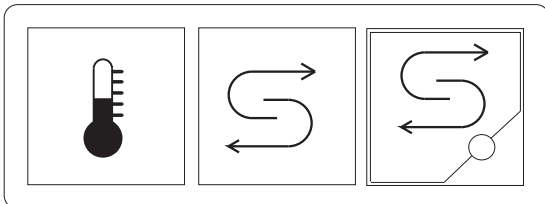


15893

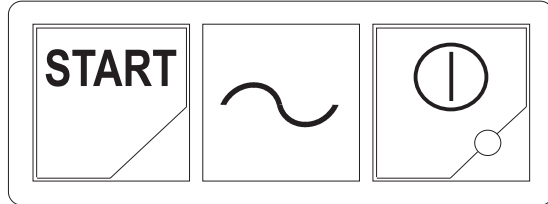


15888

SERIES GS50-GS45-GS40 REGENERATION

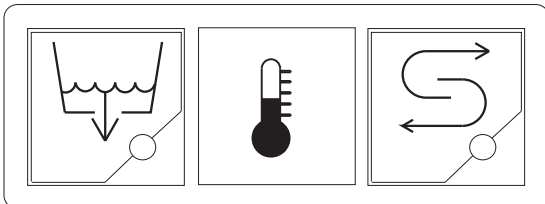


15894

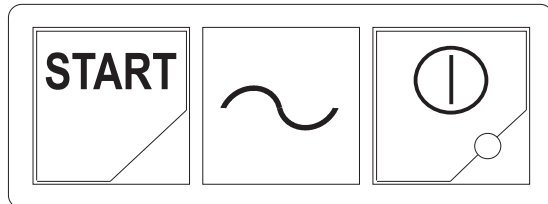


15891

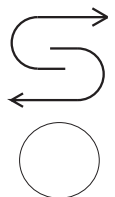
SERIES GS50-GS45-GS40 REGENERATION-DRAIN PUMP



15892



15891



10711/B

