
DESPIECES DEL SERVICIO TECNICO

- Marmitas Baño María a Presión eléctricas
- Marmites Bain Marie à Pression électriques
- Electric Boiling pans - Indirect system with pressure
- Elektro Druckkochkessel - Indirekt beheizt

Mod.

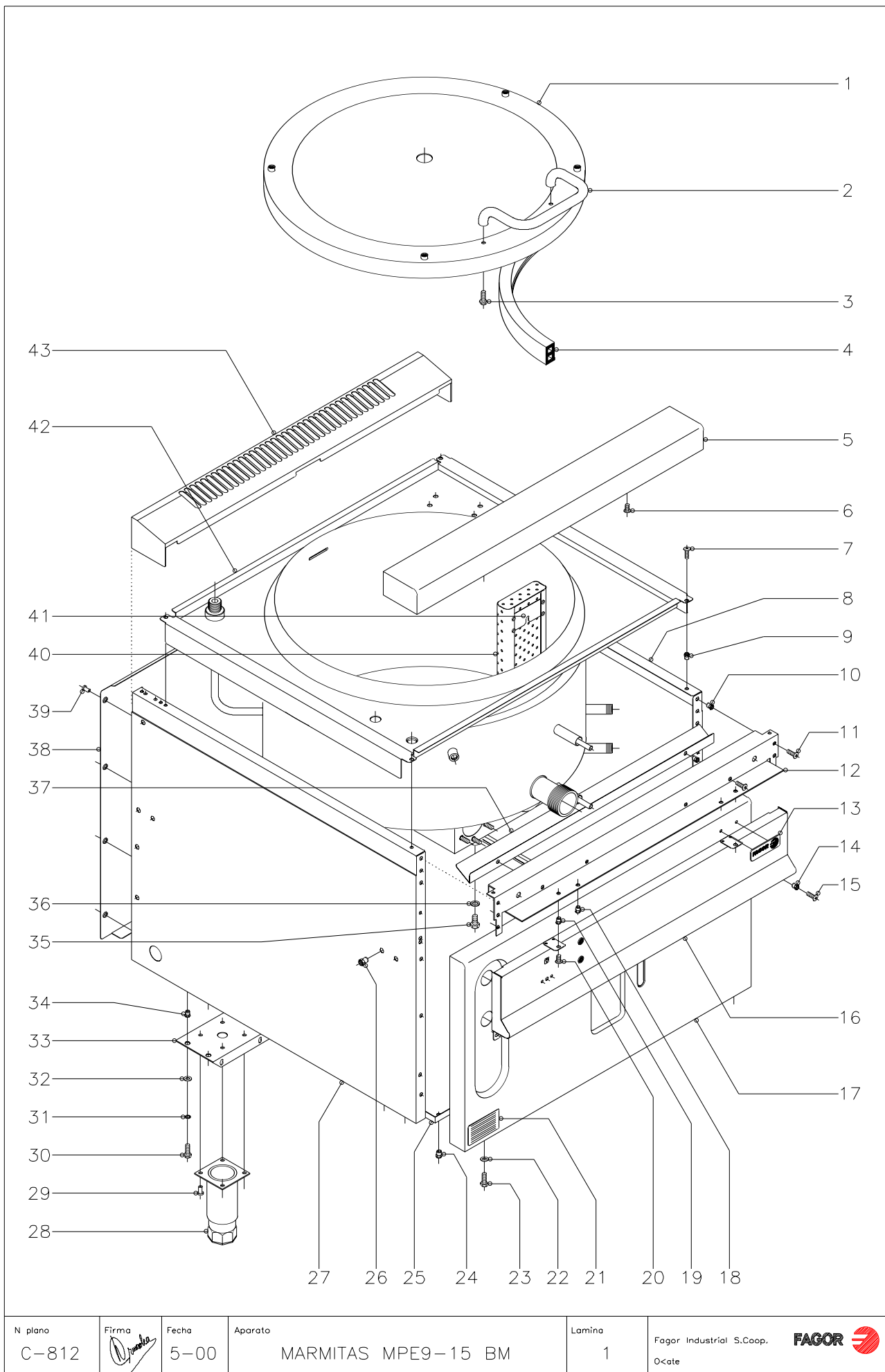
MPE9-15 BM

MPE9-15 BMS

MAYO 2000

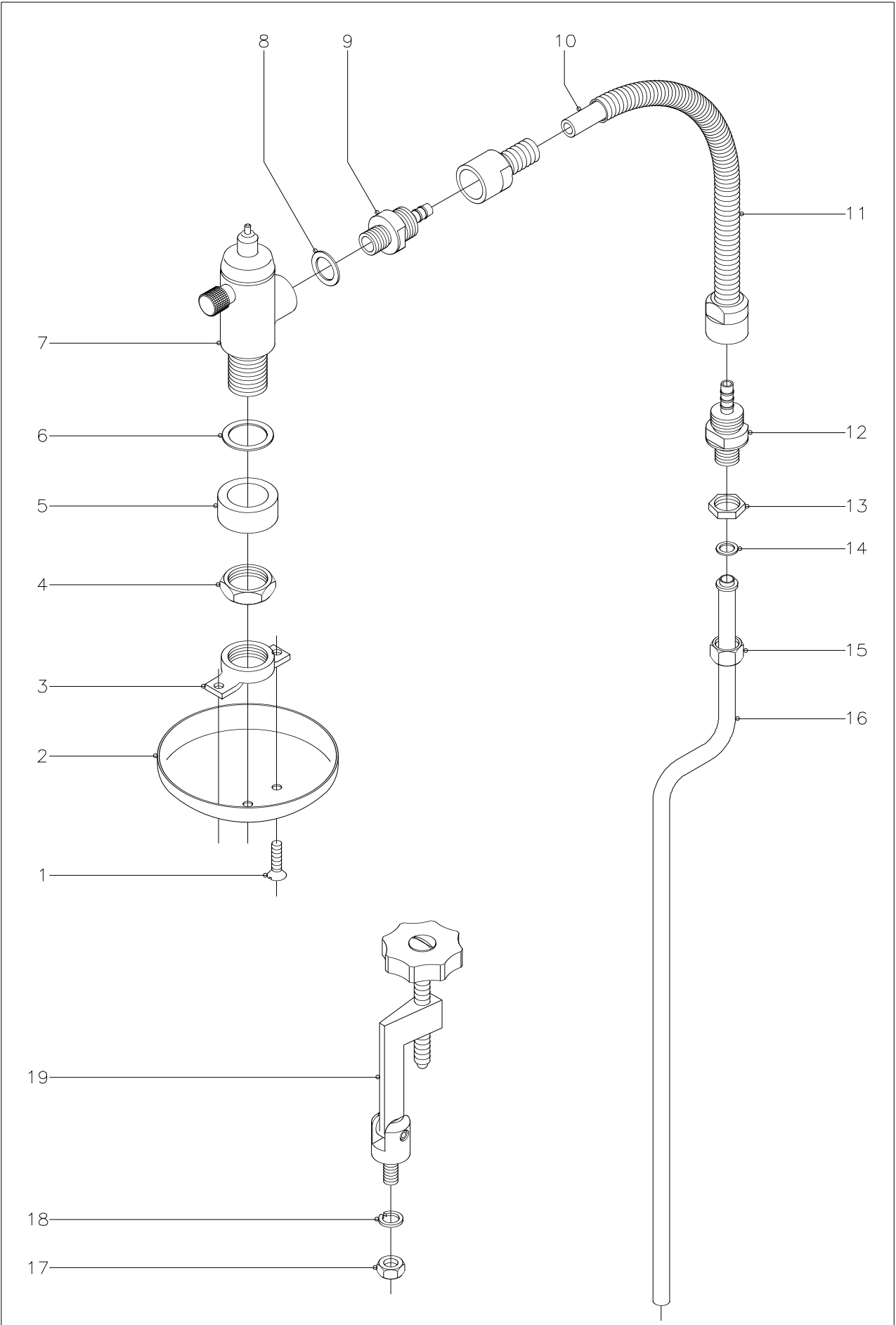


Fagor Industrial, S. Coop.



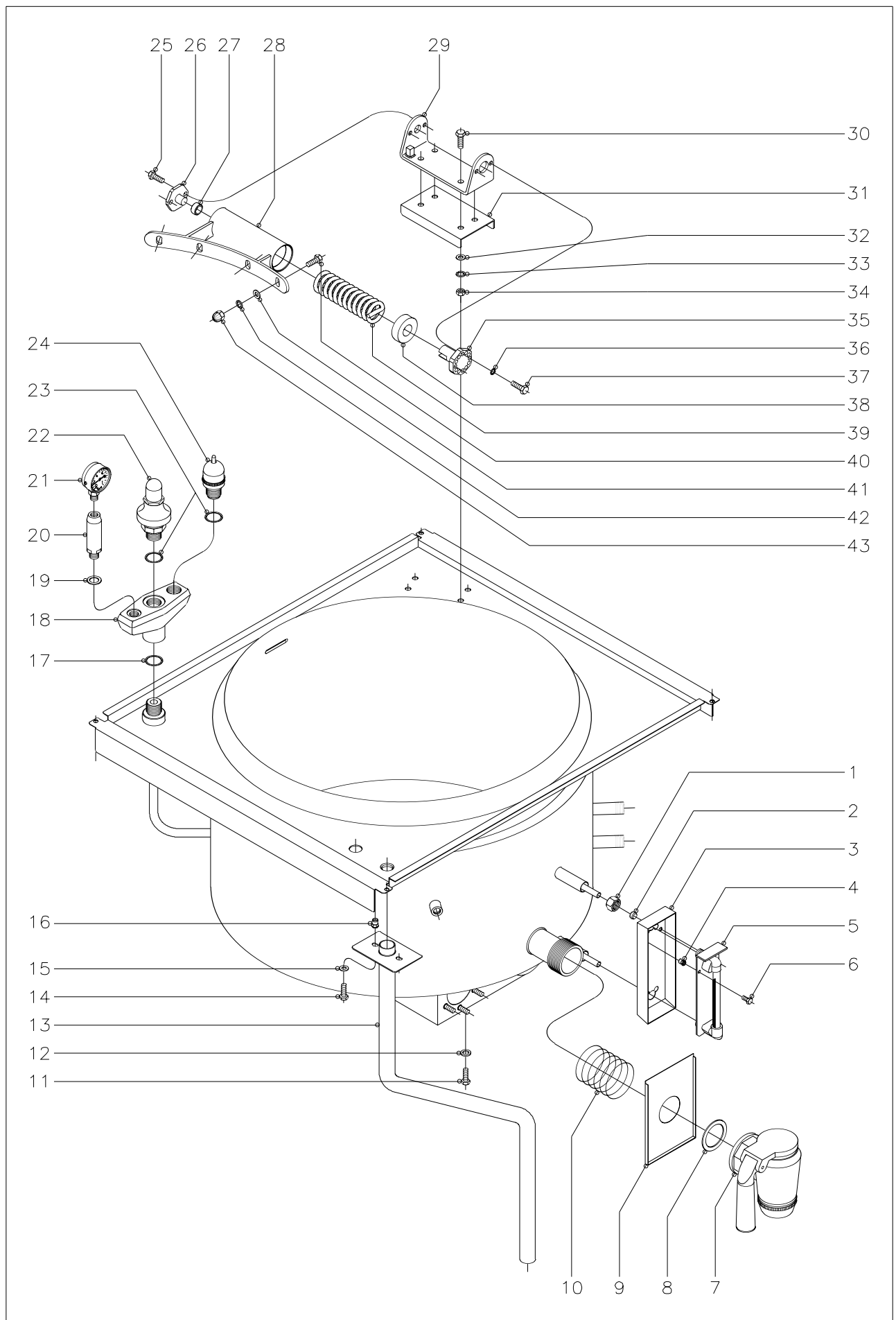
| MOD. | | MARMITAS PRESION BAÑO MARIA | | ZONA | MUEBLE | | | | | | PLANO | C-812 |
|------|---------|-------------------------------|-------|-----------------------|-------------------------|--|--|--|--|--|-------|-------|
| ITEM | CODIGO | DENOMINACION | TEXTO | MARMITA MPE9-15 BM | MARMITA MPE9-15 BM S | | | | | | | NOTAS |
| 1 | S056137 | Tapa | | 1 | 1 | | | | | | | |
| 2 | S036123 | Asa de tapa | | 1 | 1 | | | | | | | |
| 3 | Q012053 | Tornillo exagonal M-8x20 | | 2 | 2 | | | | | | | |
| 4 | S056109 | Junta tapa | | 1 | 1 | | | | | | | |
| 5 | R165431 | Anterior de mesa | | 1 | 1 | | | | | | | |
| 6 | Q152004 | Tornillo aplastado M-5x13 | | 2 | 2 | | | | | | | |
| 7 | Q152004 | Tornillo aplastado M-5x13 | | 4 | 4 | | | | | | | |
| 8 | X162811 | Panel lateral derecho | | 1 | - | | | | | | | |
| 8 | S372812 | Panel lateral derecho | | - | 1 | | | | | | | |
| 9 | Q221342 | Remache exagonal M-5 | | 4 | 4 | | | | | | | |
| 10 | Q221342 | Remache exagonal M-5 | | 6 | 6 | | | | | | | |
| 11 | Q152004 | Tornillo aplastado M-5x13 | | 6 | 6 | | | | | | | |
| 12 | R162613 | Escuadra amarre anterior mesa | | 1 | 1 | | | | | | | |
| 13 | U262806 | Escudo FAGOR | | 1 | 1 | | | | | | | |
| | Q221023 | Clips sujecion escudo | | 2 | 2 | | | | | | | |
| 14 | Q221342 | Remache exagonal M-5 | | 2 | 2 | | | | | | | |
| 15 | Q152004 | Tornillo aplastado M-5x13 | | 2 | 2 | | | | | | | |
| 16 | S092809 | Panel portamandos | | 1 | 1 | | | | | | | |
| 17 | S092810 | Panel frontal | | 1 | 1 | | | | | | | |
| 18 | Q221342 | Remache exagonal M-5 | | 2 | 2 | | | | | | | |
| 19 | Q221342 | Remache exagonal M-5 | | 2 | 2 | | | | | | | |
| 20 | Q152004 | Tornillo aplastado M-5x13 | | 2 | 2 | | | | | | | |
| 21 | S326530 | Placa matricula | | 1 | 1 | | | | | | | |
| 22 | Q302022 | Arandela plana Ø 16xØ 6x1,2 | | 2 | 2 | | | | | | | |
| 23 | Q012042 | Tornillo exagonal M-6x15 | | 2 | 2 | | | | | | | |
| 24 | Q221343 | Remache exagonal M-6 | | 2 | 2 | | | | | | | |
| 25 | S092611 | Base inferior | | 1 | - | | | | | | | |
| 25 | S362805 | Base inferior | | - | 1 | | | | | | | |
| 26 | Q221343 | Remache exagonal M-6 | | 7 | 7 | | | | | | | |

| MOD. | | MARMITAS PRESION BAÑO MARIA | | ZONA | MUEBLE | | | | | | PLANO | C-812 |
|------|---------|-------------------------------------|-------|-----------------------|-------------------------|--|--|--|--|--|-------|---------------|
| ITEM | CODIGO | DENOMINACION | TEXTO | MARMITA MPE9-15 BM | MARMITA MPE9-15 BM S | | | | | | | NOTAS |
| 27 | X162810 | Panel lateral izquierdo | | 1 | - | | | | | | | |
| 27 | S372810 | Panel lateral izquierdo | | - | 1 | | | | | | | |
| 28 | X260150 | Pata regulable | | 4 | - | | | | | | | |
| 29 | Q411304 | Remache avibulb Ø 4,8 | | 16 | - | | | | | | | |
| 30 | Q012042 | Tornillo exagonal M-6x15 | | 8 | - | | | | | | | |
| 31 | Q262040 | Arandela muelle A-6 | | 8 | - | | | | | | | |
| 32 | Q302022 | Arandela plana Ø 16xØ 6x1,2 | | 8 | - | | | | | | | |
| 33 | S032631 | Liston soporte patas | | 2 | - | | | | | | | |
| 34 | Q221343 | Remache exagonal M-6 | | 8 | - | | | | | | | |
| 35 | Q012063 | Tornillo exagonal M-10x20 | | 1 | 1 | | | | | | | Purga de cuba |
| 36 | Q304003 | Arandela junta cobre Ø 18xØ 10,5x2 | | 1 | 1 | | | | | | | Purga de cuba |
| 37 | S032645 | Escuadra aislante calor | | 1 | 1 | | | | | | | |
| | Q221342 | Remache exagonal M-5 | | 2 | 2 | | | | | | | |
| | Q152004 | Tornillo aplastado M-5x13 | | 2 | 2 | | | | | | | |
| 38 | U562853 | Panel posterior | | 1 | - | | | | | | | |
| 38 | S372816 | Panel posterior | | - | 1 | | | | | | | |
| 39 | Q419005 | Remache tubular Ø 4x8 | | 8 | 8 | | | | | | | |
| 40 | S036145 | Filtro de cuba | | 1 | 1 | | | | | | | |
| 41 | S036117 | Soporte filtro | | 2 | 2 | | | | | | | |
| | Q412000 | Remache tubular Ø 4x8 | | 8 | 8 | | | | | | | |
| 42 | S426100 | Cuba 150 l.presion baño maria elec. | | 1 | 1 | | | | | | | |
| 43 | R165432 | Embellecedor bajo 1M. | | 1 | 1 | | | | | | | |
| | | | | | | | | | | | | |
| | | | | | | | | | | | | |
| | | | | | | | | | | | | |
| | | | | | | | | | | | | |
| | | | | | | | | | | | | |
| | | | | | | | | | | | | |



| | | | | | |
|------|----------------------------|------|---------------------------------|-------|-------|
| MOD. | MARMITA PRESION BAÑO MARIA | ZONA | VALVULA SOBREPRESION Y TIRANTES | PLANO | C-813 |
|------|----------------------------|------|---------------------------------|-------|-------|

| ITEM | CODIGO | DENOMINACION | TEXTO | MARMITA MPE9-15 BM | MARMITA MPE9-15 BM S | | | | | | | | NOTAS |
|------|---------|--------------------------------|-------|-----------------------|-------------------------|--|--|--|--|--|--|--|-------|
| 1 | Q152024 | Tornillo avellanado M-4x8 | | 2 | 2 | | | | | | | | |
| 2 | S102116 | Cubierta valvula | | 1 | 1 | | | | | | | | |
| 3 | S102115 | Tuerca de cubierta valvula | | 1 | 1 | | | | | | | | |
| 4 | Q223014 | Tuerca 1" | | 1 | 1 | | | | | | | | |
| 5 | S102114 | Casquillo suplemento | | 1 | 1 | | | | | | | | |
| 6 | Q306037 | Arandela junta Ø 42,5xØ 32x1,5 | | 1 | 1 | | | | | | | | |
| 7 | S102101 | Valvula seguridad de cuba | | 1 | 1 | | | | | | | | |
| 8 | Q306038 | Arandela junta Ø 31xØ 21x1,5 | | 1 | 1 | | | | | | | | |
| 9 | S102122 | Manguito union valvula a tubo | | 1 | 1 | | | | | | | | |
| 10 | 3676900 | Tubo de goma Ø 17xØ 10x500 | | 1 | 1 | | | | | | | | |
| 11 | S052102 | Conduccion flexible completa | | 1 | 1 | | | | | | | | |
| 12 | S102122 | Manguito union valvula a tubo | | 1 | 1 | | | | | | | | |
| 13 | Q221302 | Tuerca exagonal 1/2" | | 1 | 1 | | | | | | | | |
| 14 | Q306024 | Arandela junta Ø 18xØ 12,5x1,5 | | 1 | 1 | | | | | | | | |
| 15 | Q223010 | Tuerca 1/2" | | 1 | 1 | | | | | | | | |
| 16 | S135000 | Salida de espumas | | 1 | 1 | | | | | | | | |
| 17 | Q162070 | Tuerca exagonal M-12 | | 4 | 4 | | | | | | | | |
| 18 | Q261570 | Arandela muelle A-12 | | 4 | 4 | | | | | | | | |
| 19 | S052101 | Tirante sujecion tapa | | 4 | 4 | | | | | | | | |
| | | | | | | | | | | | | | |
| | | | | | | | | | | | | | |
| | | | | | | | | | | | | | |
| | | | | | | | | | | | | | |
| | | | | | | | | | | | | | |
| | | | | | | | | | | | | | |
| | | | | | | | | | | | | | |
| | | | | | | | | | | | | | |
| | | | | | | | | | | | | | |
| | | | | | | | | | | | | | |
| | | | | | | | | | | | | | |
| | | | | | | | | | | | | | |
| | | | | | | | | | | | | | |



| MOD. | | MARMITAS PRESION BAÑO MARIA | | ZONA | | VISUALIZADOR, DESAGÜES, VALVULAS DE SEGURIDAD Y BISAGRA DE TAPA | | | | | | PLANO | | C-814 | |
|------|---------|------------------------------------|-------|-----------------------|-------------------------|--|--|--|--|--|--|-------|--|-------|---------------|
| ITEM | CODIGO | DENOMINACION | TEXTO | MARMITA MPE9-15 BM | MARMITA MPE9-15 BM S | | | | | | | | | | NOTAS |
| 1 | S082101 | Tuerca 3/8" | | 2 | 2 | | | | | | | | | | |
| 2 | U265008 | Bicono Ø 10 | | 2 | 2 | | | | | | | | | | |
| 3 | S292600 | Proteccion visualizador | | 1 | 1 | | | | | | | | | | |
| 4 | Q221341 | Remache exagonal M-4 | | 2 | 2 | | | | | | | | | | |
| 5 | S082100 | Visualizador | | 1 | 1 | | | | | | | | | | |
| 6 | Q012021 | Tornillo exagonal M-4x10 | | 2 | 2 | | | | | | | | | | |
| 7 | S112150 | Grifo de vaciado | | 1 | 1 | | | | | | | | | | |
| 8 | S112152 | Junta grifo vaciado | | 1 | 1 | | | | | | | | | | |
| 9 | S112803 | Cubierta de grifo | | 1 | 1 | | | | | | | | | | |
| 10 | S112105 | Muelle soporte cubierta | | 1 | 1 | | | | | | | | | | |
| 11 | Q012063 | Tornillo exagonal M-10x20 | | 1 | 1 | | | | | | | | | | Purga de cuba |
| 12 | Q304003 | Arandela junta cobre Ø 18xØ 10,5x2 | | 1 | 1 | | | | | | | | | | Purga de cuba |
| 13 | S036119 | Tubo vaciado | | 1 | 1 | | | | | | | | | | |
| 14 | Q012032 | Tornillo exagonal M-5x15 | | 2 | 2 | | | | | | | | | | |
| 15 | Q262030 | Arandela muelle A-5 | | 2 | 2 | | | | | | | | | | |
| 16 | Q221342 | Remache exagonal M-5 | | 2 | 2 | | | | | | | | | | |
| 17 | Q306049 | Arandela junta Ø 31xØ26,5x1 | | 1 | 1 | | | | | | | | | | |
| 18 | S022100 | Soporte tres salidas | | 1 | 1 | | | | | | | | | | |
| 19 | Q306039 | Arandela junta Ø 25xØ16,5x1,5 | | 1 | 1 | | | | | | | | | | |
| 20 | S022102 | Sifon portamanometro | | 1 | 1 | | | | | | | | | | |
| 21 | 9220815 | Manometro de 0 a 1 kg/cm2 | | 1 | 1 | | | | | | | | | | |
| 22 | S022101 | Valvula de seguridad | | 1 | 1 | | | | | | | | | | |
| 23 | Q306049 | Arandela junta Ø 31xØ26,5x1 | | 2 | 2 | | | | | | | | | | |
| 24 | S022103 | Valvula presion | | 1 | 1 | | | | | | | | | | |
| 25 | Q012041 | Tornillo exagonal M-6x10 | | 2 | 2 | | | | | | | | | | |
| 26 | S116119 | Giro de asa | | 1 | 1 | | | | | | | | | | |
| 27 | S116126 | Cojinete cilindrico | | 1 | 1 | | | | | | | | | | |
| 28 | S036143 | Bisagra | | 1 | 1 | | | | | | | | | | |
| 29 | S036131 | Soporte bisagra | | 1 | 1 | | | | | | | | | | |

MOD.

MARMITAS PRESION BAÑO MARIA

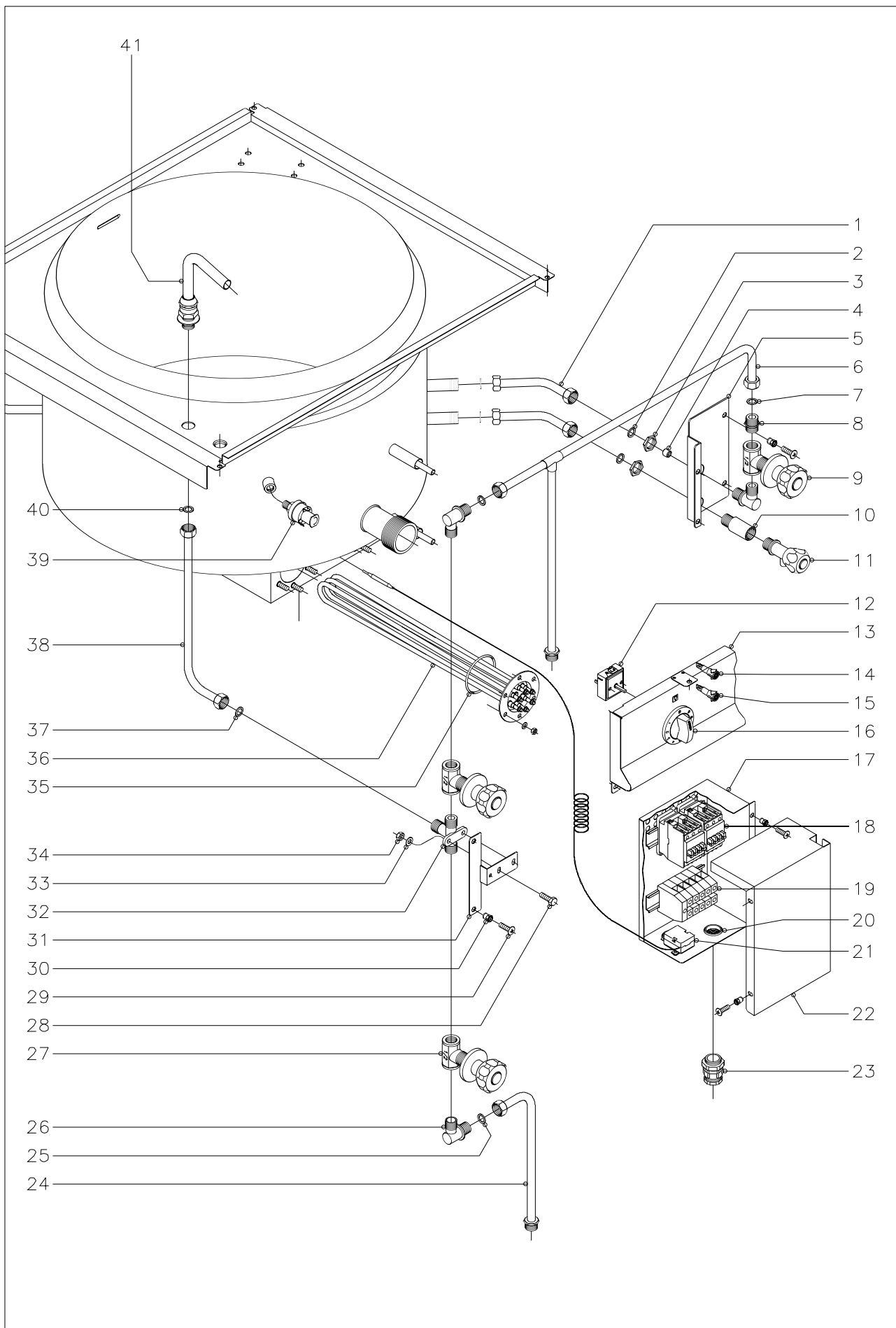
ZONA

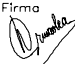

VISUALIZADOR, DESAGÜES,
VALVULAS DE SEGURIDAD Y BISAGRA DE TAPA

PLANO

C-814

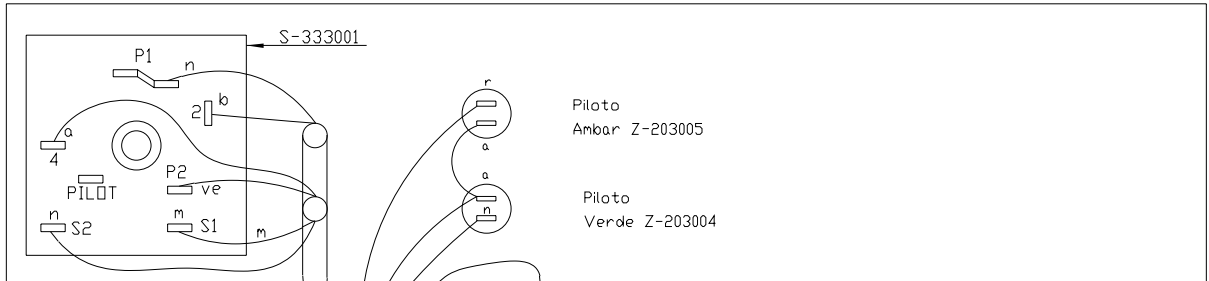
| ITEM | CODIGO | DENOMINACION | TEXTO | MARMITA MPE9-15 BM | MARMITA MPE9-15 BM S | | | | | | | | | NOTAS |
|------|---------|--------------------------|-------|-----------------------|-------------------------|--|--|--|--|--|--|--|--|-------|
| 30 | Q012055 | Tornillo exagonal M-8x30 | | 4 | 4 | | | | | | | | | |
| 31 | S036122 | Refuerzo bisagra | | 1 | 1 | | | | | | | | | |
| 32 | Q232050 | Arandela plana A-8 | | 4 | 4 | | | | | | | | | |
| 33 | Q262050 | Arandela muelle A-8 | | 4 | 4 | | | | | | | | | |
| 34 | Q162050 | Tuerca exagonal M-8 | | 4 | 4 | | | | | | | | | |
| 35 | S116120 | Tensor resorte | | 1 | 1 | | | | | | | | | |
| 36 | Q262040 | Arandela muelle A-6 | | 2 | 2 | | | | | | | | | |
| 37 | Q012042 | Tornillo exagonal M-6x15 | | 2 | 2 | | | | | | | | | |
| 38 | S116118 | Casquillo | | 1 | 1 | | | | | | | | | |
| 39 | S116121 | Resorte tapa | | 1 | 1 | | | | | | | | | |
| 40 | Q012053 | Tornillo exagonal M-8x20 | | 4 | 4 | | | | | | | | | |
| 41 | Q232050 | Arandela plana A-8 | | 4 | 4 | | | | | | | | | |
| 42 | Q262050 | Arandela muelle A-8 | | 4 | 4 | | | | | | | | | |
| 43 | Q212051 | Tuerca sombrerete M-8 | | 4 | 4 | | | | | | | | | |
| | | | | | | | | | | | | | | |
| | | | | | | | | | | | | | | |
| | | | | | | | | | | | | | | |
| | | | | | | | | | | | | | | |
| | | | | | | | | | | | | | | |
| | | | | | | | | | | | | | | |
| | | | | | | | | | | | | | | |
| | | | | | | | | | | | | | | |
| | | | | | | | | | | | | | | |
| | | | | | | | | | | | | | | |
| | | | | | | | | | | | | | | |
| | | | | | | | | | | | | | | |



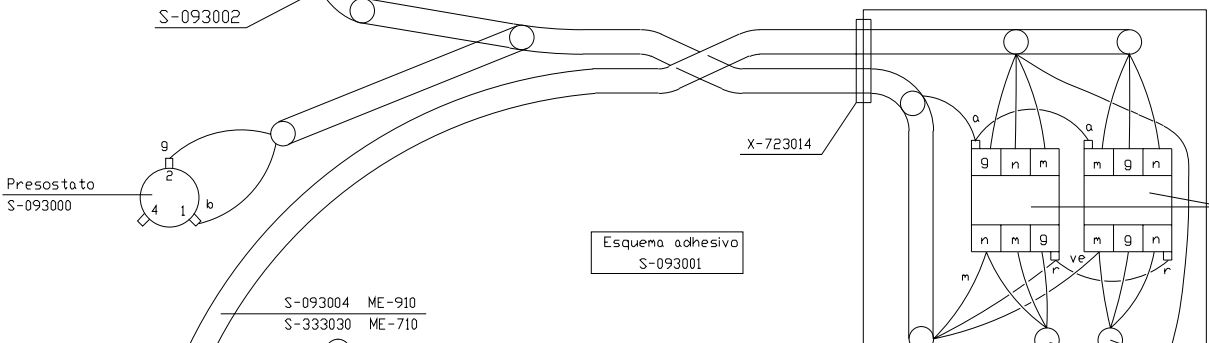
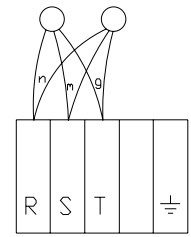
| | | | | | |
|------------------|--|---------------|--------------------------------|-------------|--|
| N plano C-815 | Firma  | Fecha 5-00 | Aparato MARMITAS MPE9-15 BM | Lámina 4 | Fagor Industrial S.Coop. FAGOR  Ocate |
|------------------|--|---------------|--------------------------------|-------------|--|

| MOD. | | MARMITAS PRESION BAÑO MARIA | | ZONA | | PARTE ELECTRICA Y TOMAS DE AGUA | | | | | PLANO | | C-815 |
|------|---------|-------------------------------------|-------|-----------------------|-------------------------|---------------------------------|--|--|--|--|-------|--|-------|
| ITEM | CODIGO | DENOMINACION | TEXTO | MARMITA MPE9-15 BM | MARMITA MPE9-15 BM S | | | | | | | | NOTAS |
| 1 | S045004 | Conduccion a nivel y llenado | | 2 | 2 | | | | | | | | |
| 2 | Q306024 | Arandela junta Ø 18xØ 12,5x1,5 | | 4 | 4 | | | | | | | | |
| 3 | Q221302 | Tuerca exagonal 1/2" | | 2 | 2 | | | | | | | | |
| 4 | S225012 | Regulador de caudal | | 1 | 1 | | | | | | | | |
| 5 | S092601 | Soporte grifos llenado-vaciado | | 1 | 1 | | | | | | | | |
| | Q221342 | Remache exagonal M-5 | | 2 | 2 | | | | | | | | |
| | Q152004 | Tornillo aplastado M-5x13 | | 2 | 2 | | | | | | | | |
| 6 | S045015 | Conduccion superior agua (caliente) | | 1 | - | | | | | | | | |
| s/n | S375005 | Conduccion superior agua (caliente) | | - | 1 | | | | | | | | |
| 7 | Q306024 | Arandela junta Ø 18xØ 12,5x1,5 | | 2 | 2 | | | | | | | | |
| 8 | S205023 | Manguito doble 1/2" | | 1 | 1 | | | | | | | | |
| 9 | S112154 | Llave de paso con mando (Caliente) | | 2 | 2 | | | | | | | | |
| 10 | S045006 | Casquillo grifo nivel | | 1 | 1 | | | | | | | | |
| 11 | S022104 | Grifo nivel | | 1 | 1 | | | | | | | | |
| 12 | S333001 | Regulador de energia | | 1 | 1 | | | | | | | | |
| 13 | S092809 | Panel portamandos | | 1 | 1 | | | | | | | | |
| 14 | Z203004 | Piloto verde | | 1 | 1 | | | | | | | | |
| 15 | Z203005 | Piloto ambar | | 1 | 1 | | | | | | | | |
| 16 | S333005 | Boton de mando Ø 6 | | 1 | 1 | | | | | | | | |
| 17 | S092604 | Caja electrica | | 1 | 1 | | | | | | | | |
| | Q221342 | Remache exagonal M-5 | | 2 | 2 | | | | | | | | |
| | Q152004 | Tornillo aplastado M-5x13 | | 2 | 2 | | | | | | | | |
| 18 | X183011 | Contactador 230V. | | 2 | 2 | | | | | | | | |
| | Z103084 | Guia L=138 | | 1 | 1 | | | | | | | | |
| 19 | Z683069 | Borna fases (gris) | | 3 | 3 | | | | | | | | |
| | Z683097 | Borna neutro (azul) | | 1 | 1 | | | | | | | | |
| | Z683070 | Borna tierra (verde-amarillo) | | 1 | 1 | | | | | | | | |
| | Z683096 | Tope final | | 1 | 1 | | | | | | | | |
| | Z103084 | Guia L=138 | | 1 | 1 | | | | | | | | |

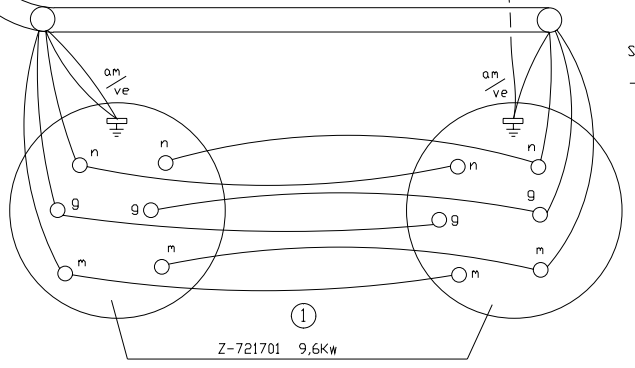
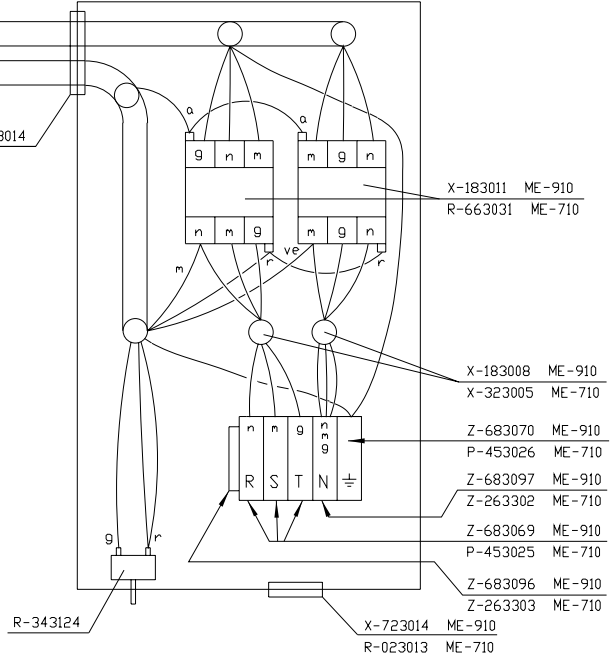
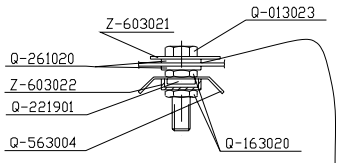
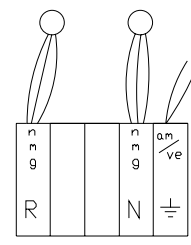
| MOD. | | MARMITAS PRESION BAÑO MARIA | | ZONA | | PARTE ELECTRICA Y TOMAS DE AGUA | | | | | PLANO | | C-815 |
|------|---------|---------------------------------|-------|-----------------------|-------------------------|---------------------------------|--|--|--|--|-------|--|-------|
| ITEM | CODIGO | DENOMINACION | TEXTO | MARMITA MPE9-15 BM | MARMITA MPE9-15 BM S | | | | | | | | NOTAS |
| 20 | X723014 | Pasamuros Ø 30 | | 2 | 2 | | | | | | | | |
| 21 | R343124 | Termostato limitador | | 1 | 1 | | | | | | | | |
| | Q223022 | Tuerca exagonal M-8x1 | | 1 | 1 | | | | | | | | |
| 22 | S093014 | Tapa caja electrica | | 1 | 1 | | | | | | | | |
| | Q221342 | Remache exagonal M-5 | | 2 | 2 | | | | | | | | |
| | Q152004 | Tornillo aplastado M-5x13 | | 2 | 2 | | | | | | | | |
| 23 | R023013 | Prensaestopas | | 1 | 1 | | | | | | | | |
| 24 | S035036 | Conduccion inferior agua (fria) | | 1 | - | | | | | | | | |
| s/n | S375007 | Conduccion inferior agua (fria) | | - | 1 | | | | | | | | |
| 25 | Q306024 | Arandela junta Ø 18xØ 12,5x1,5 | | 1 | 1 | | | | | | | | |
| 26 | S115013 | Codo | | 3 | 3 | | | | | | | | |
| 27 | S112151 | Llave paso con mando (fria) | | 1 | 1 | | | | | | | | |
| 28 | Q012042 | Tornillo exagonal M-6x15 | | 2 | 2 | | | | | | | | |
| 29 | Q152004 | Tornillo aplastado M-5x13 | | 2 | 2 | | | | | | | | |
| 30 | Q221342 | Remache exagonal M-5 | | 2 | 2 | | | | | | | | |
| 31 | S032640 | Soporte grifos de agua | | 1 | 1 | | | | | | | | |
| 32 | S205022 | Racord union de grifos | | 1 | 1 | | | | | | | | |
| 33 | Q262040 | Arandela muelle A-6 | | 2 | 2 | | | | | | | | |
| 34 | Q162040 | Tuerca exagonal M-6 | | 2 | 2 | | | | | | | | |
| 35 | Q307035 | Junta torica | | 2 | 2 | | | | | | | | |
| 36 | Z721701 | Resistencia de calentamiento | | 2 | 2 | | | | | | | | |
| | Q232040 | Arandela plana A-6 | | 12 | 12 | | | | | | | | |
| | Q163140 | Tuerca exagonal M-6 | | 12 | 12 | | | | | | | | |
| 37 | Q306024 | Arandela junta Ø 18xØ 12,5x1,5 | | 1 | 1 | | | | | | | | |
| 38 | S035032 | Conducto grifos a base | | 1 | 1 | | | | | | | | |
| 39 | S093000 | Presostato | | 1 | 1 | | | | | | | | |
| 40 | Q306024 | Arandela junta Ø 18xØ 12,5x1,5 | | 1 | 1 | | | | | | | | |
| 41 | S052100 | Tubo de llenado | | 1 | 1 | | | | | | | | |
| | | | | | | | | | | | | | |



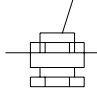
3 ÷ 220V



1N ÷ 220-240V



Solo ME-910
R-023013

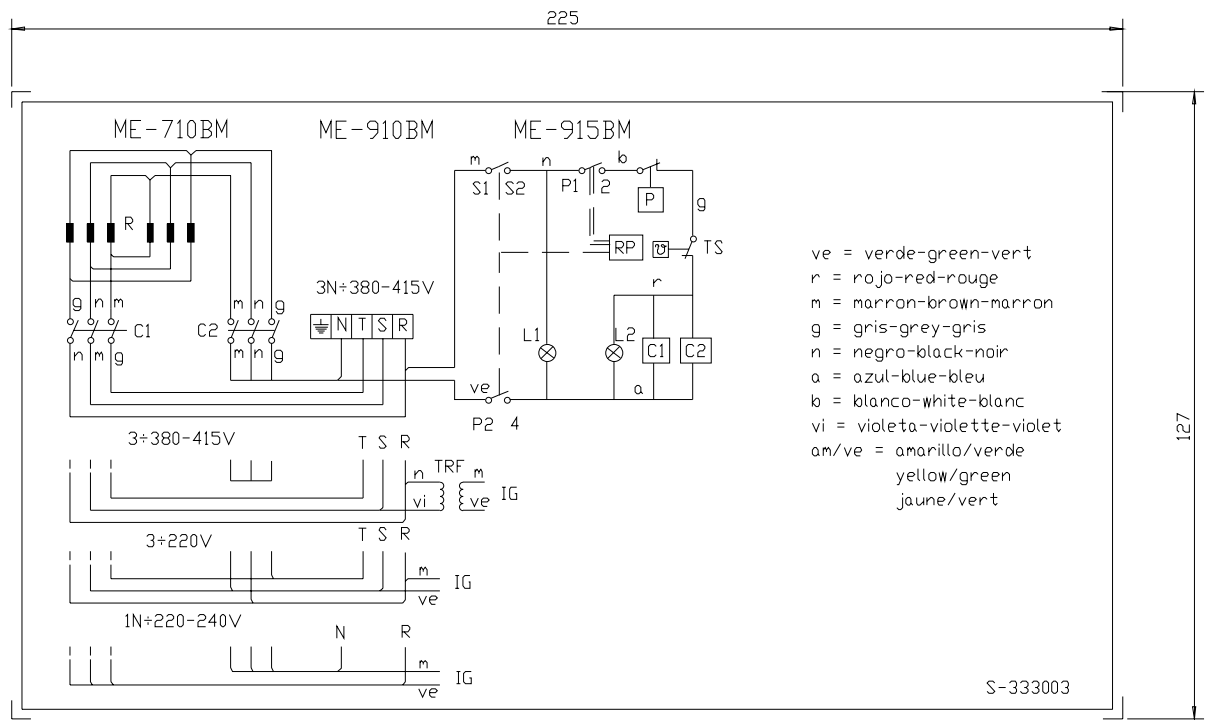


Z-721701 9,6Kw

| Plano de montaje 380-415V | | | | S-333002 | |
|--|-------------------------------|-------|---------------|------------------|----------------------------|
| Nº | Pieza | Cant. | Material | Nº Clasificación | Acabado |
| Nº | Modificación | | Propuesta de | Fecha | Tolerancias generales |
| 1 | De R143000 a Z721701 en ME710 | | Plazaola | 9-2-99 | < 5 ± 5 ÷ 25 25 ÷ 50 |
| DeS333000aS333030/deZ691751aZ721701 | | | | | 50-100 > 100 ∞ 1 |
| Dibujado | | | Firma | Fecha | Mecanizado superficial |
| Proyectado | | | KONTXI | 19/6/97 | |
| Comprobado | | | <i>Letona</i> | | |
| Escala | | | | | |
| MARMITAS | | | | | Plano numero HC-72843-1 |
| Plano hau ez daiteke erabil ez berrizta gure bainentz gabe | | | | | Sustituye al N° |
| | | | | | Sustituido por |



Fagor Industrial, Koop. Elk. Mugatua




NOTA

- Las inscripciones resistirán sin modificación apreciable el frotamiento durante 15 seg. de un algodón impregnado en gasolina.

- IG: Interruptor general
- L1: Lámpara funcionamiento
- RP: Regulador de energía.
- L2: Lámpara calentamiento
- C1,C2: Contactor de calentamiento
- R: Resistencias
- P: Presostato (0,3 bar.)
- TS: Termostato Seguridad (125°)
- TRF: Transformador

Plastico blanco alto brillo

| | | | | | |
|--------------------------|--------------|--|------------------|---|-----------------|
| Esquema teorico adhesivo | | S-333003 | | | |
| Nº | Pieza | Material | Nº Clasificación | Acabado | |
| Nº | Modificación | Propuesta de | Fecha | Tolerancias generales | |
| | | | | < 5 ± | 50 ± 100 |
| | | | | 5 ± 25 | > 100 |
| | | | | 25 ± 50 | ∞ |
| Dibujado | | Firma | Fecha | Mecanizado superficial | |
| Proyectado | | KONTXI | 20/6/97 | FAGOR  | |
| Comprobado | | <i>Jetouq</i> | | Fagor Industrial, Koop Elk, Mugatua | |
| Escala | | | | | Plano numero |
| | | MARMITA ELECTRICA | | | HC-72844 |
| | | Plano hau ez daiteke erabil ez berrizta gure bainentz gabe | | | Sustituye al N° |
| | | | | | Sustituido por |