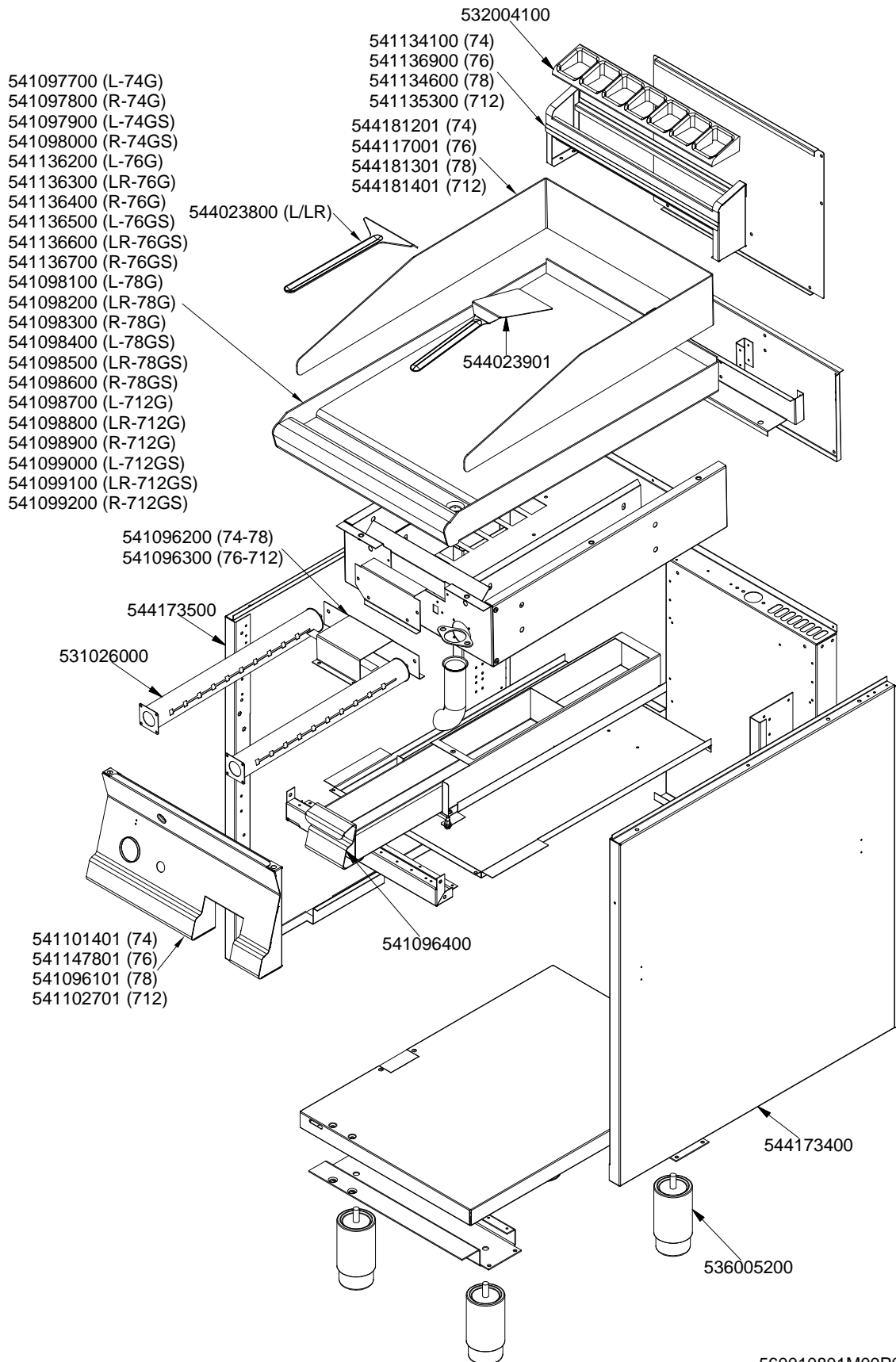


# SUPERLOTUS 70≥0602

GAS / GAS / GAS / GAZ

## FT...-74G FT...-76G FT...-78G FT...-712G

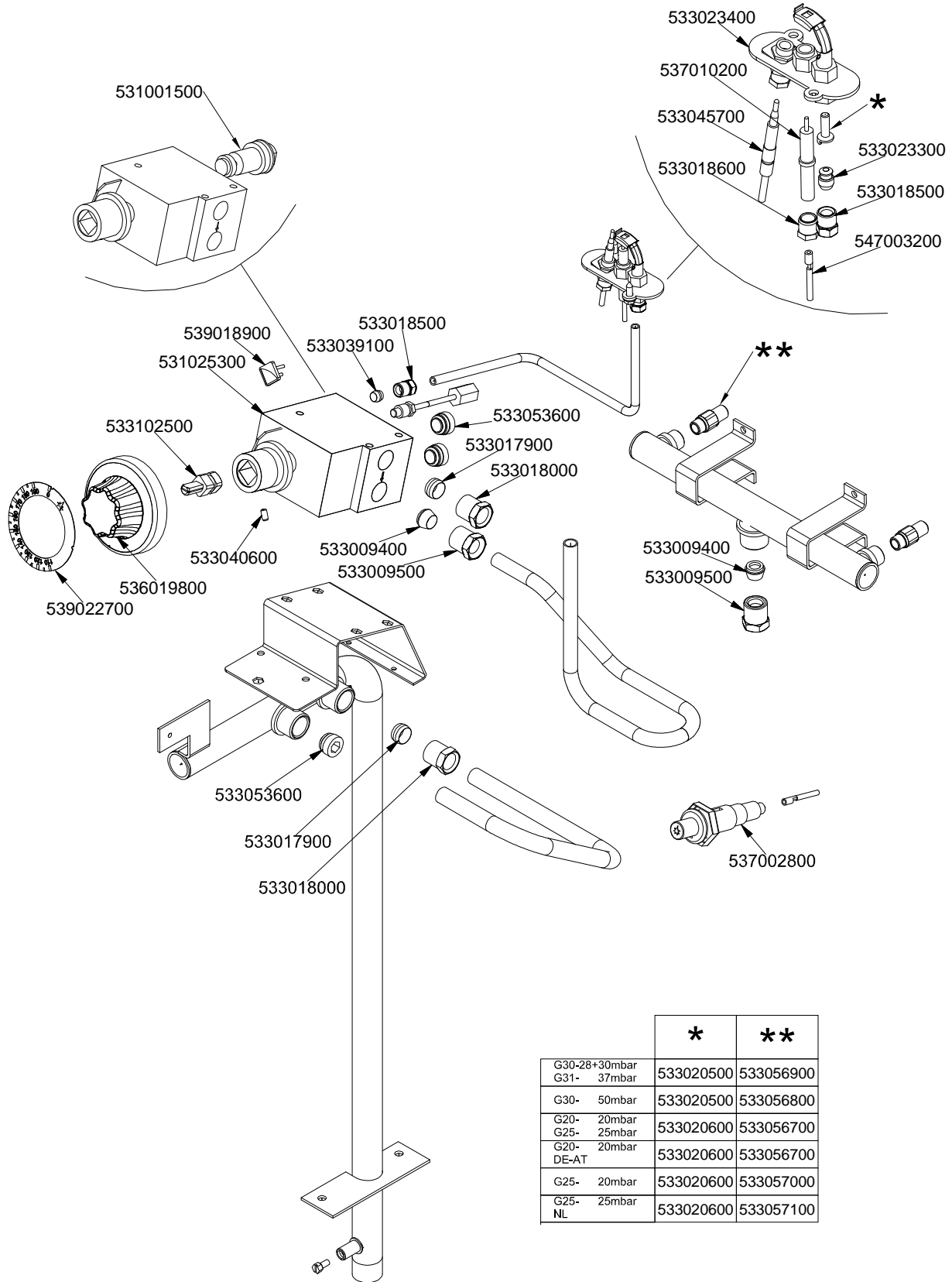


560010801M00P00

# SUPERLOTUS 70≥0602

GAS / GAS / GAS / GAZ

FT...-74G FT...-76G FT...-78G FT...-712G



|                              | *         | **        |
|------------------------------|-----------|-----------|
| G30-28+30mbar<br>G31- 37mbar | 533020500 | 533056900 |
| G30- 50mbar                  | 533020500 | 533056800 |
| G20- 20mbar<br>G25- 25mbar   | 533020600 | 533056700 |
| G20- 20mbar<br>DE-AT         | 533020600 | 533056700 |
| G25- 20mbar                  | 533020600 | 533057000 |
| G25- 25mbar<br>NL            | 533020600 | 533057100 |

560034501M00P00

| Page | Pos | Code      | Description                       |
|------|-----|-----------|-----------------------------------|
| 001  |     | 532004100 | FLUE GRID L=370 70LINE (RAF)      |
| 001  |     | 541135300 | LOW SPACER 712 3 GRIDS            |
| 001  |     | 544181401 | SPLASH GUARD FT-712               |
| 001  |     | 544023800 |                                   |
| 001  |     | 541099100 | UPPER PLATE FTLR-712GS            |
| 001  |     | 541096300 | BURNER SUPPORT FT-76G FT-712G     |
| 001  |     | 544173500 | LEFT SIDE PANEL S.70              |
| 001  |     | 531026000 | BURNER FT-4/6/8G BM-4G            |
| 001  |     | 541096400 | DRIP TRAY FT S.70                 |
| 001  |     | 544023901 | SPATTLE FOR FRY-TOP               |
| 001  |     | 541102701 | CONTROL PANEL S70/90 FT-712/912G  |
| 001  |     | 544173400 | RIGHT SIDE PANEL S.70             |
| 001  |     | 536005200 | INOX LEG 2" 120-180 M10           |
| 002  |     | 533023400 | "TARGET" PILOT + NIPPLE TC        |
| 002  |     | 537010200 | ROUND PLUG §2,4 - SHORT ELECTRODE |
| 002  |     | 533045700 | THERMOCOUPLE M9*1 500             |
| 002  |     | 533018600 | PLUG FITTING                      |
| 002  |     | 533023300 | BICONE §6 ("TARGET" PILOT)        |
| 002  |     | 533018500 | FITTING FOR BICONE D.6 M10*1      |
| 002  |     | 547003200 | HIGH-VOLTAGE CABLE TUBE.§2 L=500  |
| 002  |     | 531001500 | MAGNET FOR EUROSIT VALVE          |
| 002  |     | 533039100 | BICONE §6                         |
| 002  |     | 539018900 | INDEX FOR KNOB                    |
| 002  |     | 531026300 |                                   |
| 002  |     | 533102500 |                                   |
| 002  |     | 539022700 | ADHESIVE GRADUATED DISC FOR KNOB  |
| 002  |     | 536019800 | BLACK KNOB §70 PIN §8*6,5         |
| 002  |     | 533040600 | HEADLESS SCREW M4*8               |
| 002  |     | 533009400 | BICONE 10S                        |
| 002  |     | 533009500 | NIPPLE FOR BICONE 10S             |
| 002  |     | 533053600 | EUROSIT VALVE PLUG                |
| 002  |     | 533017900 | BICONE D.12                       |
| 002  |     | 533018000 | ELBOW FOR BICONE D.12 3/8 RS L20  |
| 002  |     | 537002800 | PIEZOELECTRIC IGNITION M18        |
| 002  |     | 533020500 | NOZZLE 0.140 §19                  |
| 002  |     | 533056900 | NOZZLE §87 CH12*30 G-FT4/8        |
| 002  |     | 533056800 | NOZZLE §77 CH12*30 F-FT4/8        |
| 002  |     | 533020600 | NOZZLE 0.140 §27                  |
| 002  |     | 533056700 | NOZZLE §135A CH12*30 M-FT4/8      |
| 002  |     | 533057000 | NOZZLE §150A CH12*30 L-FT4/8      |
| 002  |     | 533057100 | NOZZLE §140A CH12*30 M-FT4/6/8    |