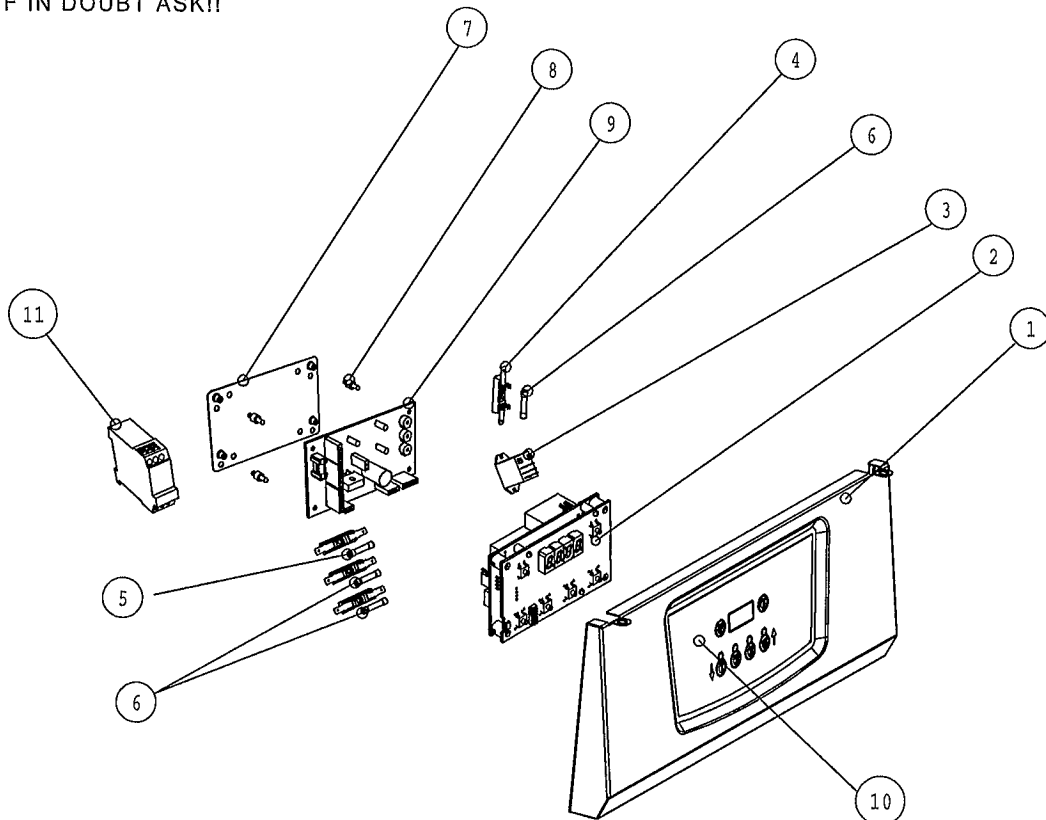


IF IN DOUBT ASK!!

DO NOT SCALE !!

First Angle Projection



ITEM	DESCRIPTION	SPARES No
1	CONTROL PANEL	536490002
2	FAST 4 BUTTON CONTROLLER	536490003
3	RELAY 24V AC D/P	536490004
4	FUSE HOLDER	536430007
5	FUSE - 2A ANTI-SURGE	536430008
6	FUSE - 5A ANTI-SURGE	536430009
7	FAN SPEED CONTROL MOUNTING PLATE	536430012
8	FAN SPEED CONTROL SPACER	536430013
9	FAN SPEED CONTROL	536060006
10	CONTROL PANEL DECAL	536490005
11	PUMP TIMER	536470007

All dimensions in millimetres, Tolerance- Linear $\pm 0.5\text{mm}$ Angular $\pm 0.5^\circ$ (or as stated). All sharp edges to be removed from sheet metal parts.

CLEARED FOR PRODUCTION



Ä	1236	SPARES RELEASE	Zone	Drawn by	Date
				<i>lain jones</i>	24/08/10

This part is common to the following units

© No reproduction or publication of this drawing may be made and no article may be manufactured or assembled in accordance with this drawing without prior written consent. This prohibition is a term of any contract relating to this drawing. Rights reserved under the Copyright Act 1988 as amended by the Design Copyright Act 1988.

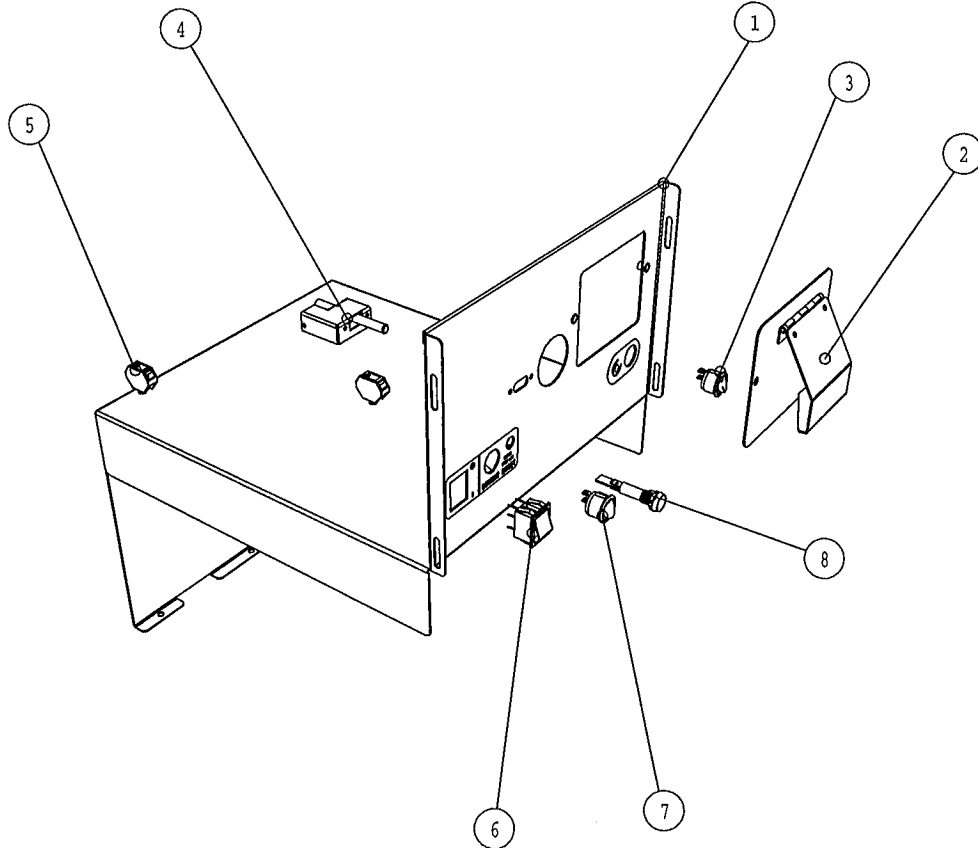
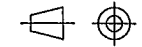
Drawn	<i>lain jones</i>	Product	G2844F UK INFINITY	
Date	30/06/10	Title	SPARES - CONTROL PANEL & ENCLOSURE COMPONENTS	
Scale	N/A	Matl.	N/A	Drawing Number
		No. off	N/A	Issue
		Bin No.	N/A	AD47715
		Kraus No.		A

1 2 3 4 5 6 7 8

IF IN DOUBT ASK!!

DO NOT SCALE !!

First Angle Projection



ITEM	DESCRIPTION	SPARES No
1	OIL COVER C/W NON ELEC FITMENTS	536490001
2	IGNITION ACCESS COVER PLATE ASSY	535770025
3	PUMP SWITCH	536430029
4	DRAIN HANDLE LOCK	536430035
5	CABLE TIE MOUNTING	536470003
6	ON / OFF SWITCH	536430031
7	BURNER RESET SWITCH	535770068
8	LOCK-OUT AMBER INDICATOR (230V)	536470001

All dimensions in millimetres, Tolerance- Linear $\pm 0.5\text{mm}$ Angular $\pm 0.5^\circ$ (or as stated). All sharp edges to be removed from sheet metal parts.

CLEARED FOR PRODUCTION



A	1236	SPARES ISSUE		<i>Vain Jones</i>	24/08/10
Issue	Mod No.	Alteration	Zone	Drawn by	Date

This part is common to the following units

© No reproduction or publication of this drawing may be made and no article may be manufactured or assembled in accordance with this drawing without prior written consent. This prohibition is a term of any contract relating to this drawing. Rights reserved under the Copyright Act 1966 as amended by the Design Copyright Act 1968.

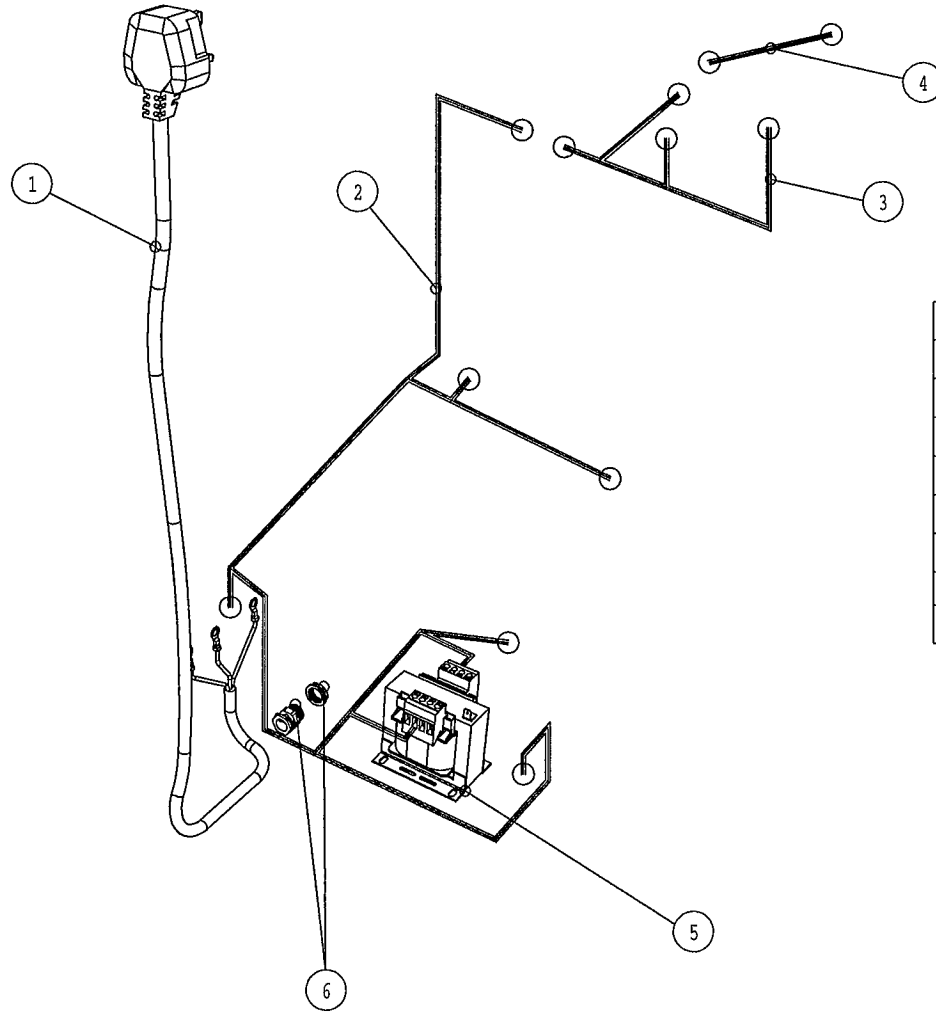
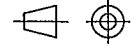
Drawn	<i>Vain Jones</i>	Product	G2844F UK INFINITY	
Date	30/06/10	Title	SPARES - OIL RETENTION COVER & COMPONENTS	
Scale	N/A	Matl.	N/A	Drawing Number
		No. off	N/A	Issue
		Matl.	N/A	
		Finsh	N/A	AD47714
		Bln No.	N/A	A
		Kraus No.		

1 2 3 4 5 6 7 8

IF IN DOUBT ASK!!

DO NOT SCALE !!

First Angle Projection



ITEM	DESCRIPTION	SPARES No
1	MAINS INLET CABLE	535770061
2	WIRE HARNESS BASE LOOM	536470004
3	WIRE HARNESS G2844F CONTROLS LOOM	536490006
4	WIRE HARNESS G2844F CONTROL PANEL LOOM	536490007
5	24V TRANSFORMER	536430037
6	MAINS CABLE GLAND	535770105

All dimensions in millimetres, Tolerance- Linear $\pm 0.5\text{mm}$ Angular $\pm 0.5^\circ$ (or as stated). All sharp edges to be removed from sheet metal parts.

CLEARED FOR PRODUCTION



Issue	Mod No.	Alteration	Zone	Drawn by	Date
A	1236	SPARES ISSUE		<i>Vain Jones</i>	24/08/10

This part is common to the following units

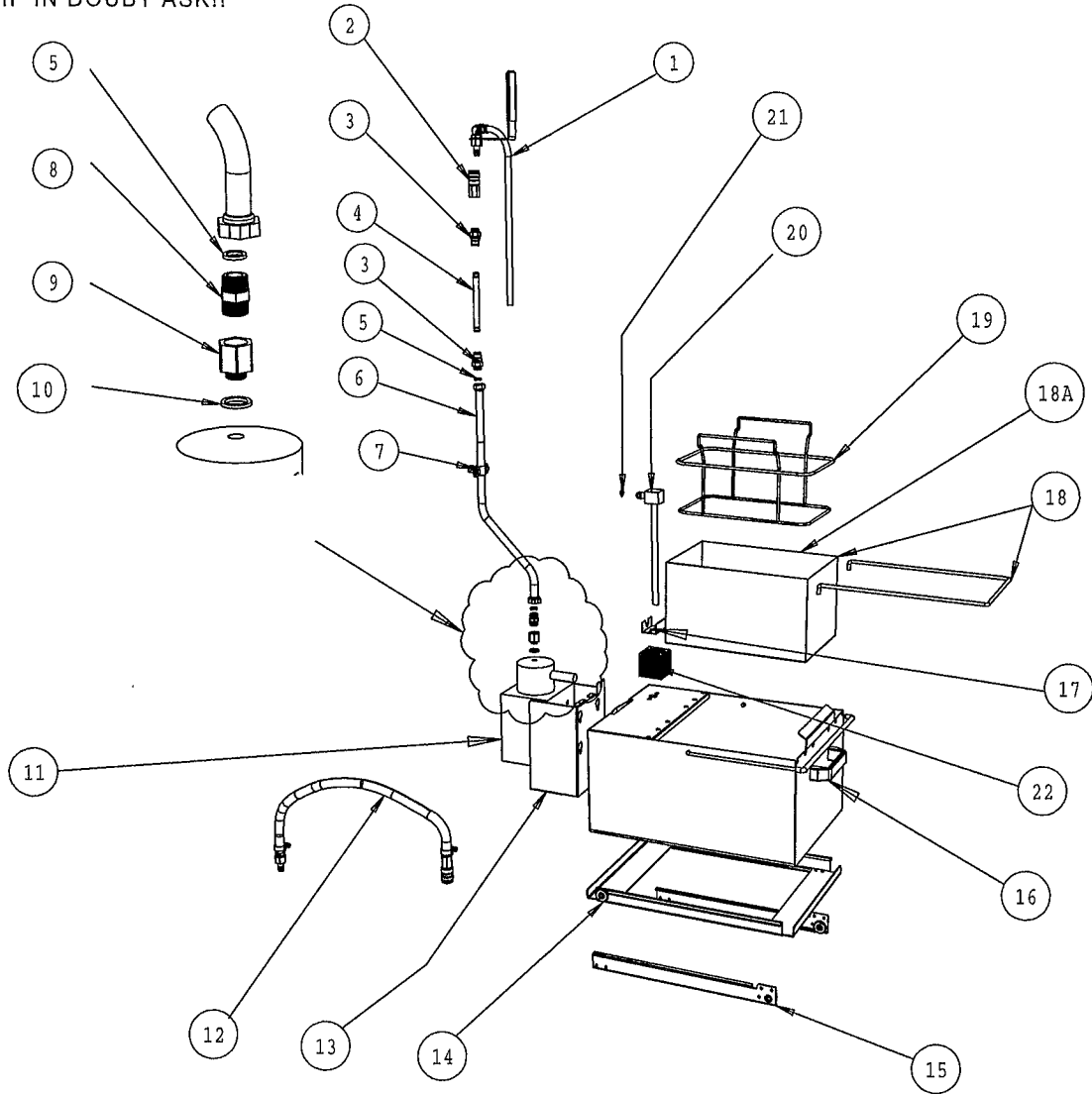
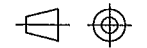
© No reproduction or publication of this drawing may be made and no article may be manufactured or assembled in accordance with this drawing without prior written consent. This prohibition is a term of any contract relating to this drawing. Rights reserved under the Copyright Act 1956 as amended by the Design Copyright Act 1988.

Drawn	<i>Vain Jones</i>	Product	G2844F UK INFINITY FRYER	
Date	30/06/10	Title	SPARES - REAR ACCESS ELECTRICS	
Scale	N/A	Matl.	N/A	Drawing Number
		No. off	N/A	Issue
		Bin No.	N/A	AD47716
		Kraus No.		A

Falcon Foodservice Equipment. Wallace View Hillfoots Road Stirling Scotland

IF IN DOUBT ASK!!

DO NOT SCALE !!
First Angle Projection



ITEM	DESCRIPTION	SPARES No
1	OIL DELIVERY HOSE	535870010
2	EXTERNAL QUICK RELEASE CONNECTION	535770085
3	INTERNAL QUICK RELEASE CONNECTION	535770084
4	STAINLESS STEEL RIDGED PIPE	535770110
5	COPPER WASHER 15.0mm	737401239
6	STAINLESS STEEL FLEXI PIPE C/W WASHER	535770111
7	PIPE CLAMP	535770112
8	DOUBLE MALE NIPPLE 3/8" - 8mm	535770113
9	INCREASER MALE TO FEMALE C/W "O" RING	737401233
10	COPPER WASHER \varnothing 8.5mm	737401245
11	FILTRATION PUMP C/WSCREWS	535770077
12	RED EXTENSION HOSE	535770087
13	FILTRATION PUMP MOUNTING BRACKET	535770074
14	OIL RETENTION CRADLE	535770028
15	OIL RETENTION RUNNERS	535770026
16	OIL RETENTION BUCKET ASSEMBLY	535770095
16A	OIL RETENTION BUCKET C/W SPLASHGUARD	536060033
17	OIL SUCTION PIPE BRACKET	535770075
18	MICRO FILTER ASSEMBLY	535770030
18A	MICRO FILTER	535770120
19	STRAINER BASKET	535770032
20	OIL SUCTION PIPE	535770076
21	OIL SUCTION PIPE "O" RING	739400997
22	OIL SUCTION PIPE FILTER BOX	536060032

All dimensions in millimetres, Tolerance- Linear $\pm 0.5\text{mm}$ Angular $\pm 0.5^\circ$ (or as stated). All sharp edges to be removed from sheet metal parts.

B	136	2844 INFO ADDED	4/08/10
A	1177	SPARES ISSUE	23/11/07
Issue	Mod No.	Alteration	Date



Drawn	<i>lain jones</i>	Product	G2844/5/8 UK INFINITY FRYER
Date	23/11/07	Title	SPARES - OIL FILTRATION
Scale	N.T.S.		
Matl.		Drawing Number	Issue
No. off	Finish	AD45081	B
Bin No.	Kraus No. T100615		

No reproduction or publication of this drawing may be made and no article may be manufactured or assembled in accordance with this drawing without prior written consent. This prohibition is a term of any contract relating to this drawing. Rights reserved under the Copyright Act 1956 as amended by the Design Copyright Act 1988.

This part is common to the following units

1

2

3

4

5

6

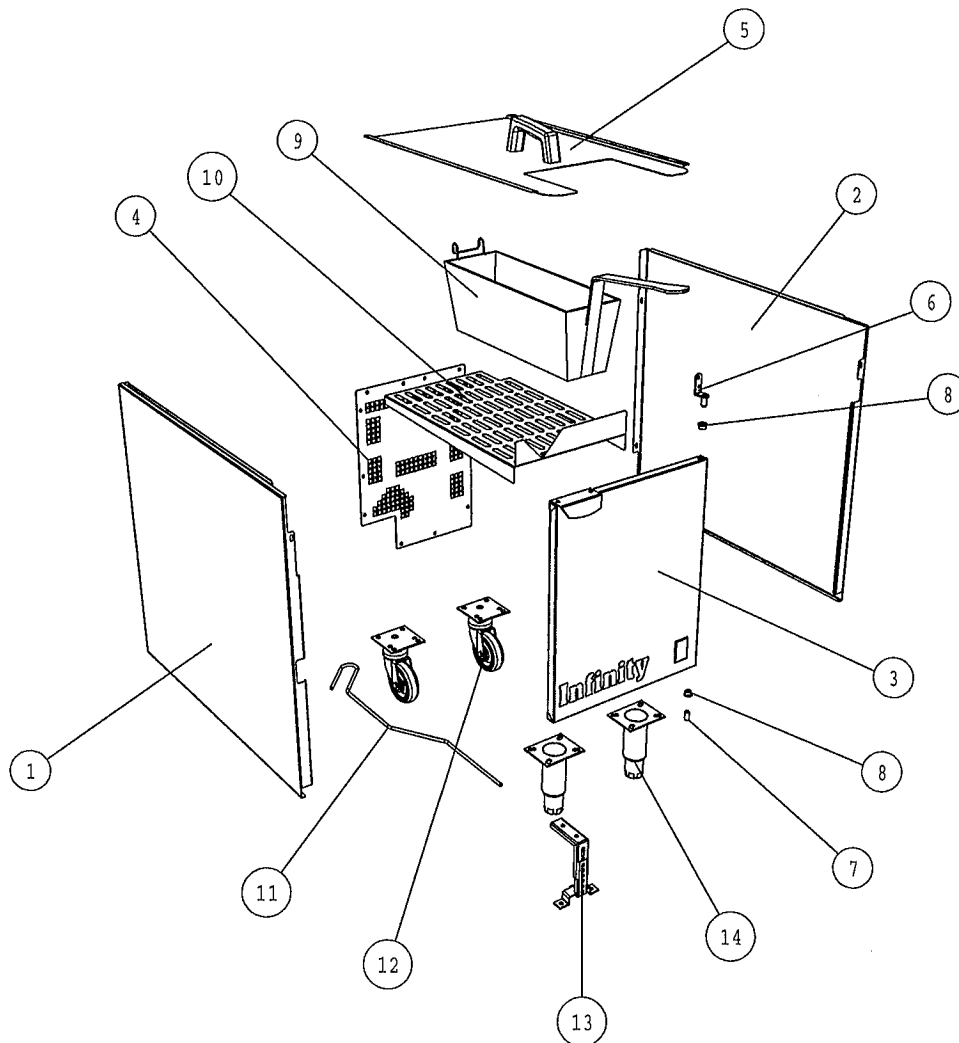
7

8

IF IN DOUBT ASK!!

DO NOT SCALE !!

First Angle Projection



G2845/8/16 & FF SINGLE PAN FRYER - B/TECH BURNER SYSTEM		
ITEM	DESCRIPTION	SPARES No.
1	L/H OUTER SIDE PANEL	536430104
2	R/H OUTER SIDE PANEL	536430105
3	DOOR PANEL ASSEMBLY	535770017
4	REAR ACCESS PANEL	535770045
5	PAN LID	535780000
6	TOP DOOR HINGE	536430108
7	BOTTOM DOOR HINGE	536430109
8	DOOR HINGE BUSH SET	536060036
9	FRYING BASKET	535770089
10	FISH PLATE	536470008
11	DRAIN PROD	535770088
12	REAR CASTOR	536060035
13	ANTI TILT KIT	535770097
14	FRONT FOOT	535770020

All dimensions in millimetres, Tolerance- Linear $\pm 0.5\text{mm}$ Angular $\pm 0.5^\circ$ (or as stated). All sharp edges to be removed from sheet metal parts.

B	1236	G2844-INFO ADD- SPARES ISSUE	28/08/10
A	1177		28/11/07
Issue	Mod No.	Alteration	Date



Drawn	<i>Wain Jones</i>	Product	G2844/5/8 UK INFINITY FRYER	
Date	28/11/07	Title	SPARES - OUTER PANELS & FITMENTS	
Scale	N/A	Matl.	N/A	Drawing Number
		No. off	N/A	Issue
		Bin No.	N/A	AD45085
		Kraus No.	T100619	B

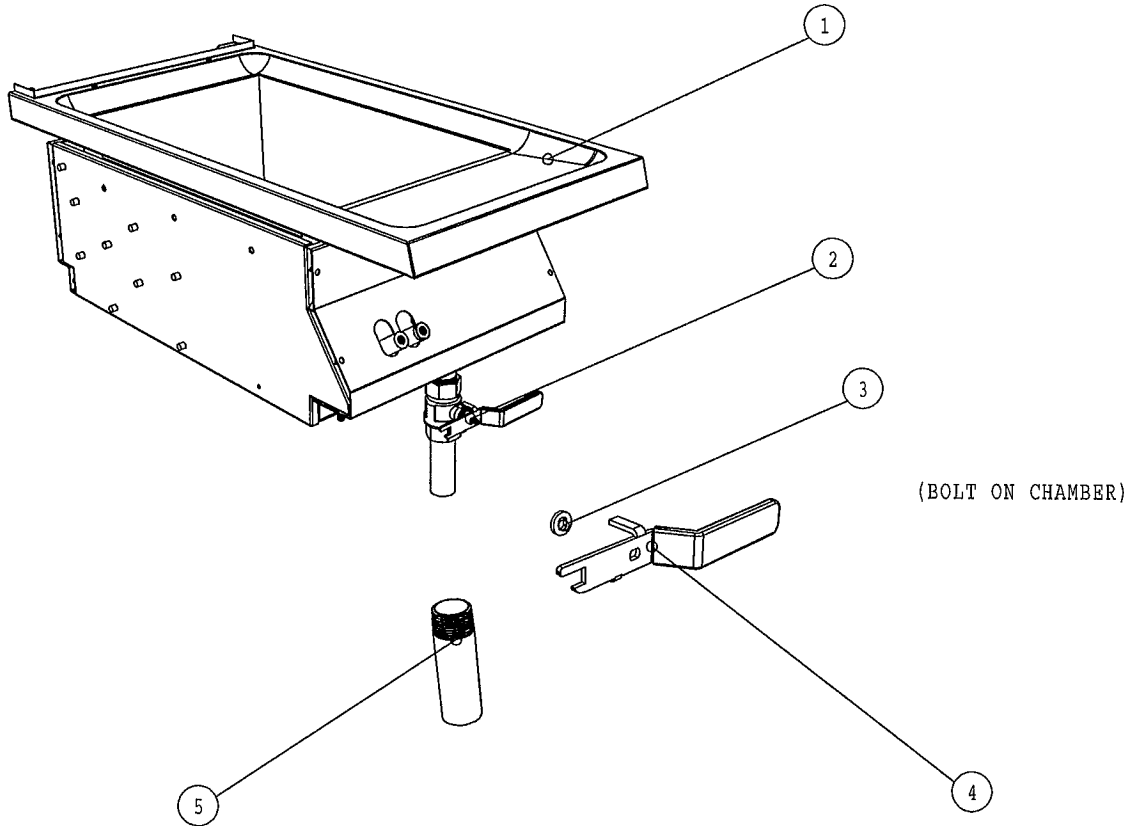
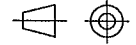
© No reproduction or publication of this drawing may be made and no article may be manufactured or assembled in accordance with this drawing without prior written consent. This prohibition is a term of any contract relating to this drawing. Rights reserved under the Copyright Act 1956 as amended by the Design Copyright Act 1988.

This part is common to the following units

IF IN DOUBT ASK!!

DO NOT SCALE !!

First Angle Projection



ITEM	DESCRIPTION	SPARES No
1	HOB & PAN ASSY C/W VALVE	536470006 PRE F468540
1A	HOB & PAN ASSY C/W VALVE	536470015 POST F468540
2	DRAIL VALVE ASSY	535770011
3	SPACER WASHER	535770013
4	DRAIN HANDLE	535770014
5	DRAIN OUTLET PIPE	535770012

All dimensions in millimetres, Tolerance- Linear $\pm 0.5\text{mm}$ Angular $\pm 0.5^\circ$ (or as stated). All sharp edges to be removed from sheet metal parts.

B	1236	G2844 INFO ADDED	24/08/10
A	1177	SPARES ISSUE	26/11/07
Issue	Mod No.	Alteration	Date



Drawn	<i>lain jones</i>	Product	G2844/5/8 UK INFINITY FRYER	
Date	26/11/07	Title	SPARES - PAN & DRAIN	
Scale	N/A	Matl.	N/A	Drawing Number
		No. off	N/A	Issue
		Bin No.	N/A	AD45082
		Kraus No.	T100616	B

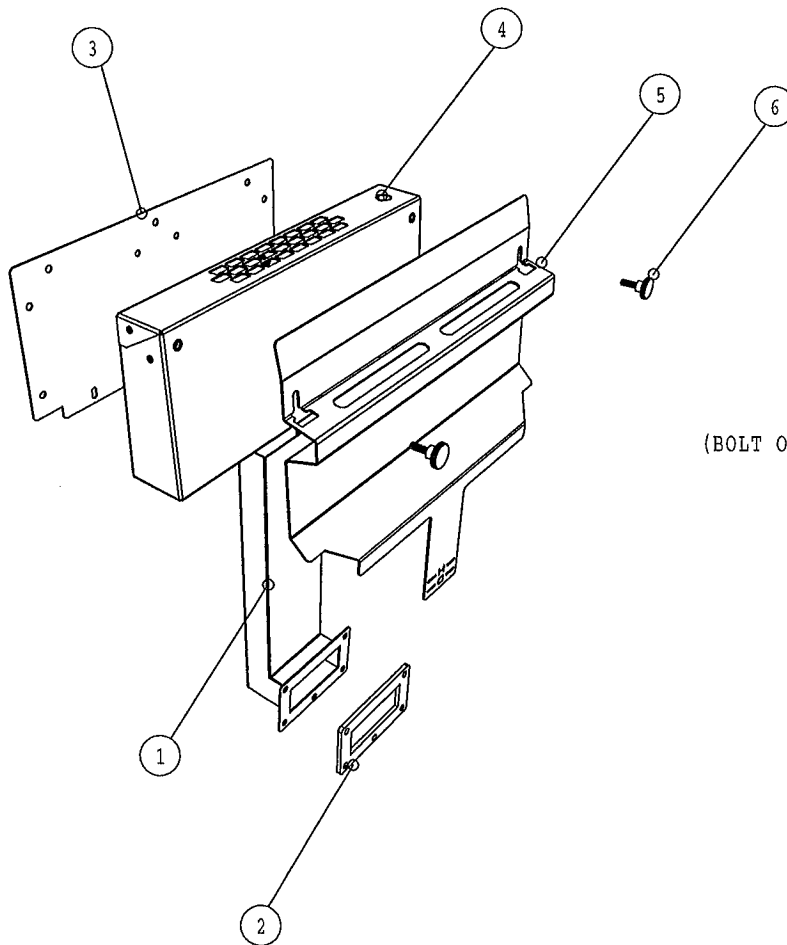
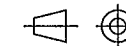
© No reproduction or publication of this drawing may be made and no article may be manufactured or assembled in accordance with this drawing without prior written consent. This prohibition is a term of any contract relating to this drawing. Rights reserved under the Copyright Act 1956 as amended by the Design Copyright Act 1988.

This part is common to the following units

IF IN DOUBT ASK!!

DO NOT SCALE !!

First Angle Projection



(BOLT ON CHAMBER)

ITEM	DESCRIPTION	SPARES No
1	FLUE RISER ASSY C/W GASKET	536430079 PRE F468540
1A	FLUE RISER ASSY C/W GASKET	536470014 POST F468540
2	FLUE RISER GASKET	535770049
3	FLUE BACK PANEL	535870020
4	FLUE PANEL	535770114
5	BASKET HANGING RAIL	536370008
6	BASKET HANGING RAIL SCREWS	535770100

All dimensions in millimetres, Tolerance- Linear $\pm 0.5\text{mm}$ Angular $\pm 0.5^\circ$ (or as stated). All sharp edges to be removed from sheet metal parts.

B	1136	G2844 - INFO ADDED	<i>Vain Barnes</i>	28/11/07		
A	1177	SPARES ISSUE	<i>Vain Barnes</i>	28/11/07		
G	Issue	Mod No.	Alteration	Zone	Drawn by	Date



This part is common to the following units

Drawn	<i>Vain Barnes</i>	Product	G2844/5/8 UK INFINITY FRYER	
Date	28/11/07	Title	SPARES - FLUE & BASKET HANGING RAIL	
Scale	N/A	Matl.	N/A	Drawing Number
		No. off	N/A	Issue
		Blk No.	N/A	AD45083
		Kraus No.	T100617	B

© No reproduction or publication of this drawing may be made and no article may be manufactured or assembled in accordance with this drawing without prior written consent. This prohibition is a term of any contract relating to this drawing. Rights reserved under the Copyright Act 1956 as amended by the Design Copyright Act 1968.