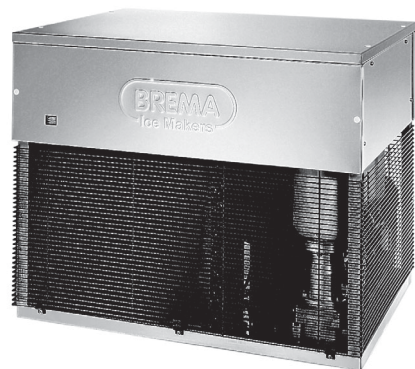


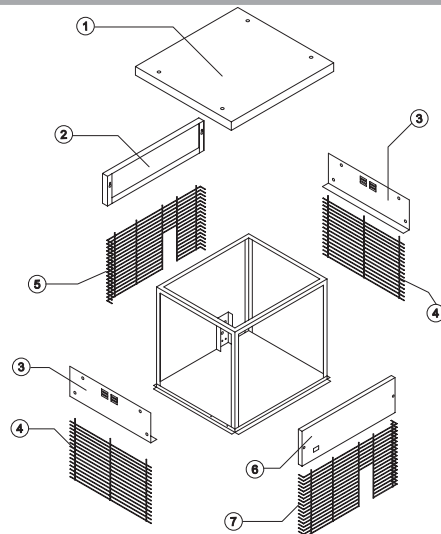


# G 1000

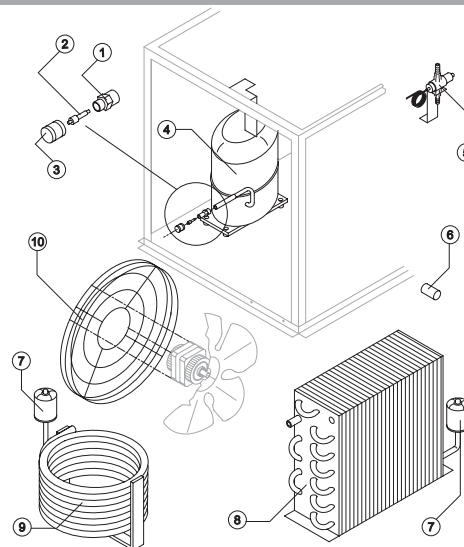
## LIST OF THE EXPLODED VIEWS



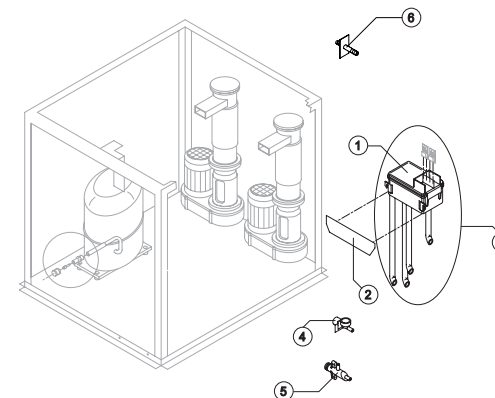
### SHELL ASSY



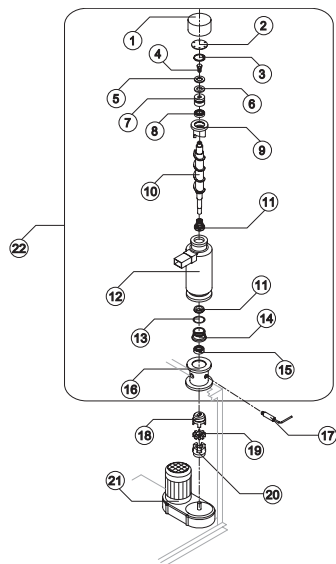
### COOLING SYSTEM



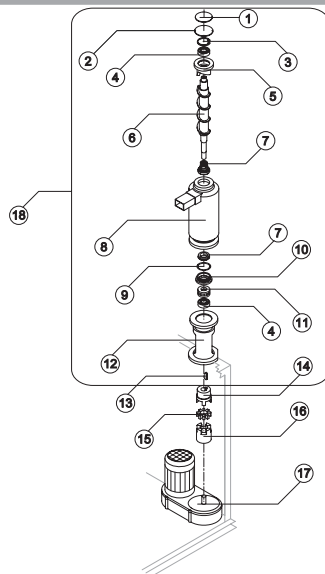
### HYDRAULIC CIRCUIT



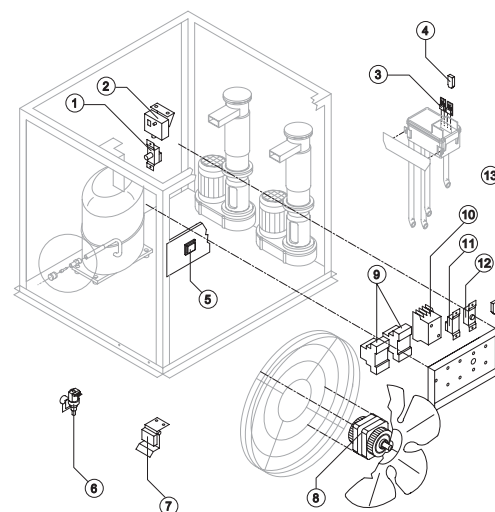
### EVAPORATOR From s/n. 160133 up Today



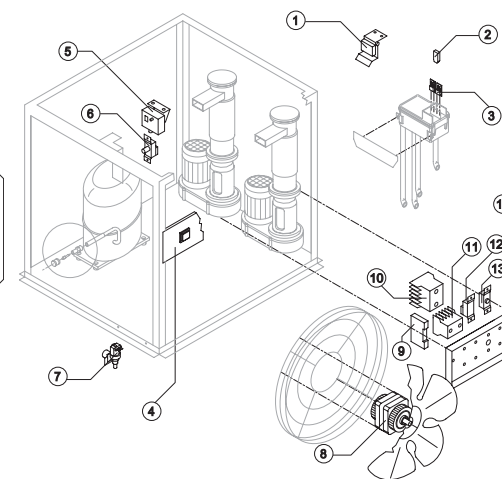
### EVAPORATOR Till s/n. 160132



### ELECTRIC PARTS From s/n.160133 up Today



### ELECTRIC PARTS Till s/n.160132

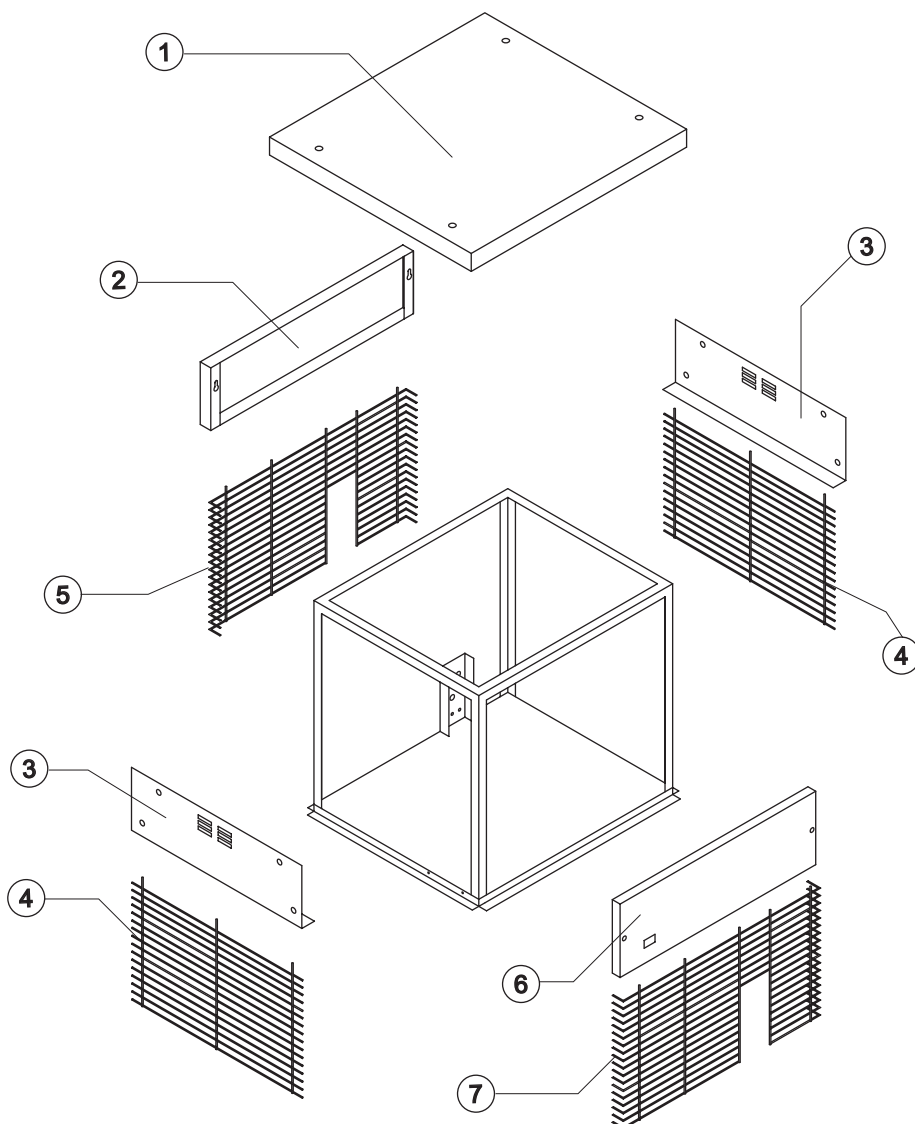


Rev. 1 - 12/6/2002



# G 1000

## SHELL ASSY



### Common Parts

Ref.	Spare Description	Code
1	Top	22681
2	Back Panel	22684
3	Right/Left Panel	22682
4	Lateral Grid	D12064
5	Back Grid	D12063
6	Front Panel Assembly	C22683B
7	Front Grid	D12062



# G 1000

## COOLING SYSTEM

### Common Parts

Ref.	Spare Description	Code
1	Vacuum-Charge Valve Body	14007
2	Vacuum-Charge Valve Device	14005
3	Vacuum-Charge Valve Plug	14006
4	Compressor	See Table
7	Solid Core Drier	14255

### Parts for Air-Cooled Version Only

Ref.	Spare Description	Code
6	Condenser 5 $\mu$ f	23469
8	Air Condenser	20396
10	Fan Motor Grid	See Table

### Parts for Water-Cooled Version Only

Ref.	Spare Description	Code
5	Pressure Valve	20149
9	Water Condenser	14285

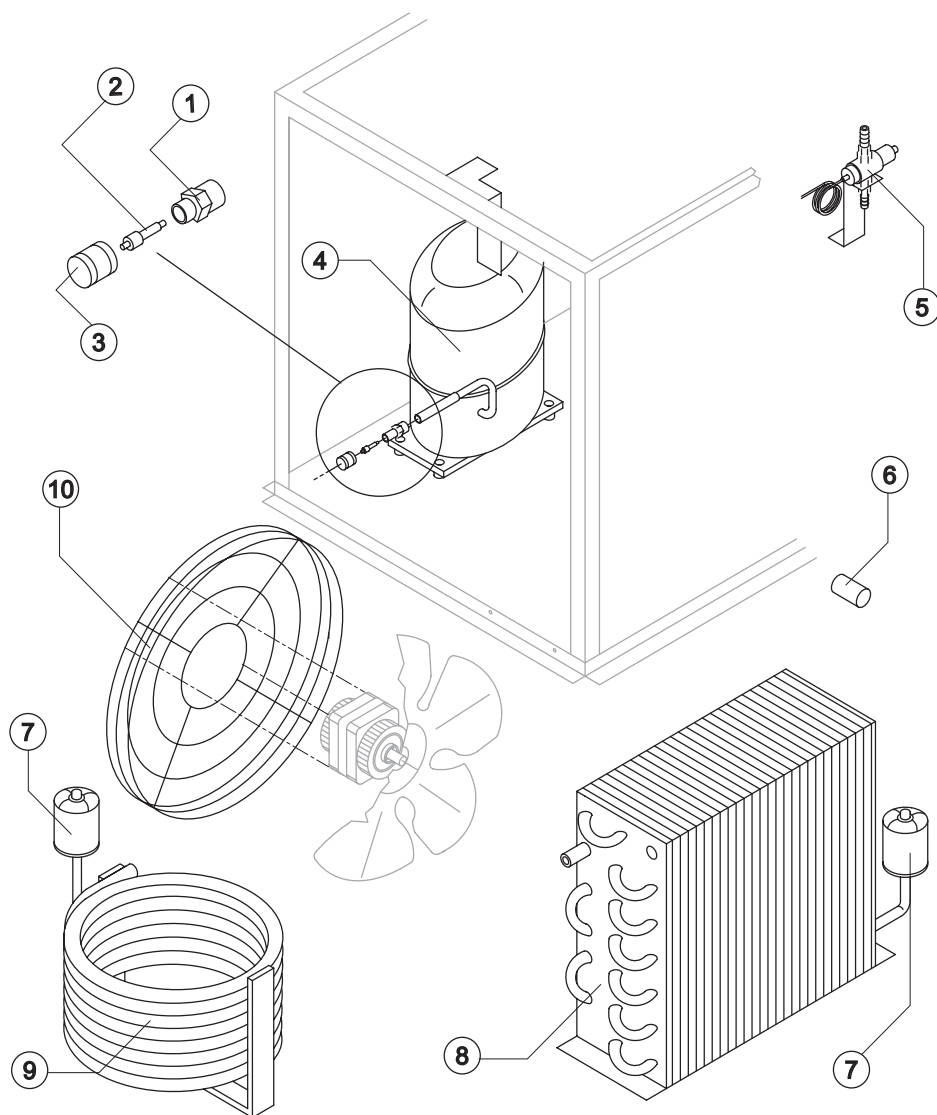
### Ref. 4 - Compressor

Tension	Code
400V 3N 50 Hz	23583
220/230V 3 60 Hz	23618

### Ref. 10 - Fan Motor Grid

Tension	Code
400V 3N 50 Hz	12053
220/230V 3 60 Hz	12052

Rev. 1 - 12/6/2002

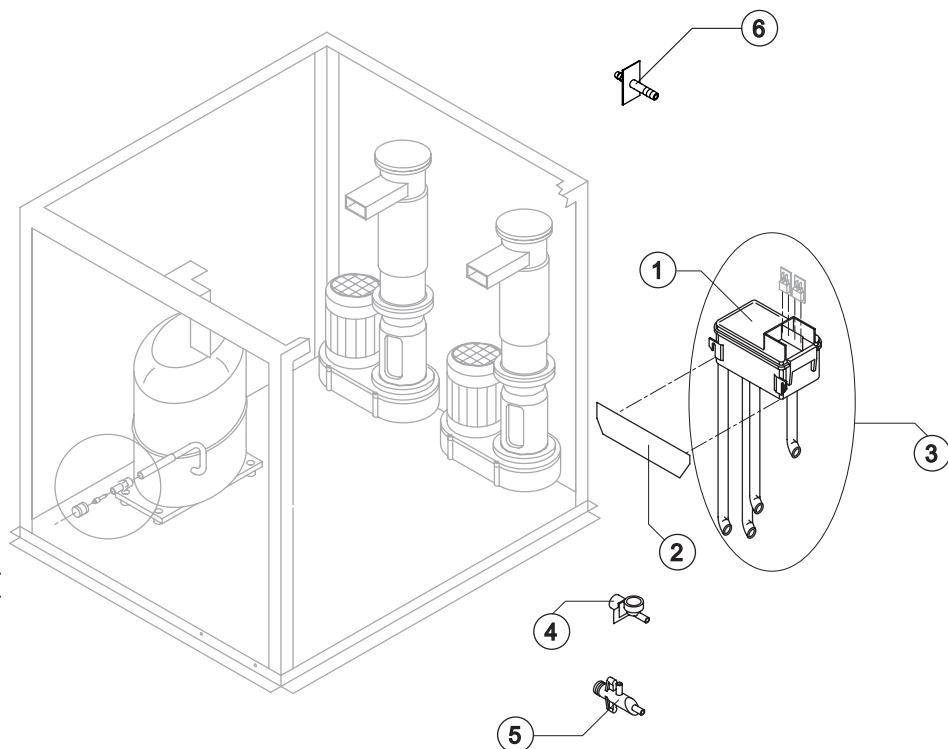




# G 1000

## HYDRAULIC CIRCUIT

Rev. 1 - 12/6/2002



### Common Parts

Ref.	Spare Description	Code
1	Basin Support Plate	21133
2	Double Switch Basin	10145
3	Double Switch Basin Assembly	C10325
5	Discharges Manifold	C10384

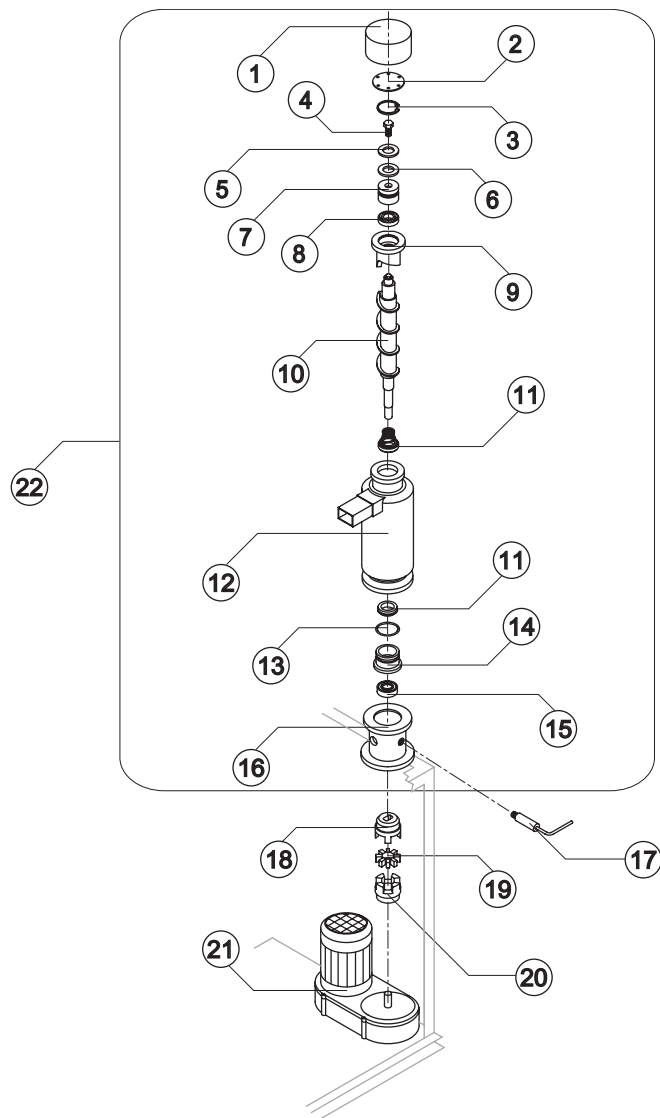
### Parts for Water-Cooled Version Only

Ref.	Spare Description	Code
4	1 Way Inlet Water Nipple	10239
6	Rubber Holder with Plate	C20462



# G 1000

## EVAPORATOR



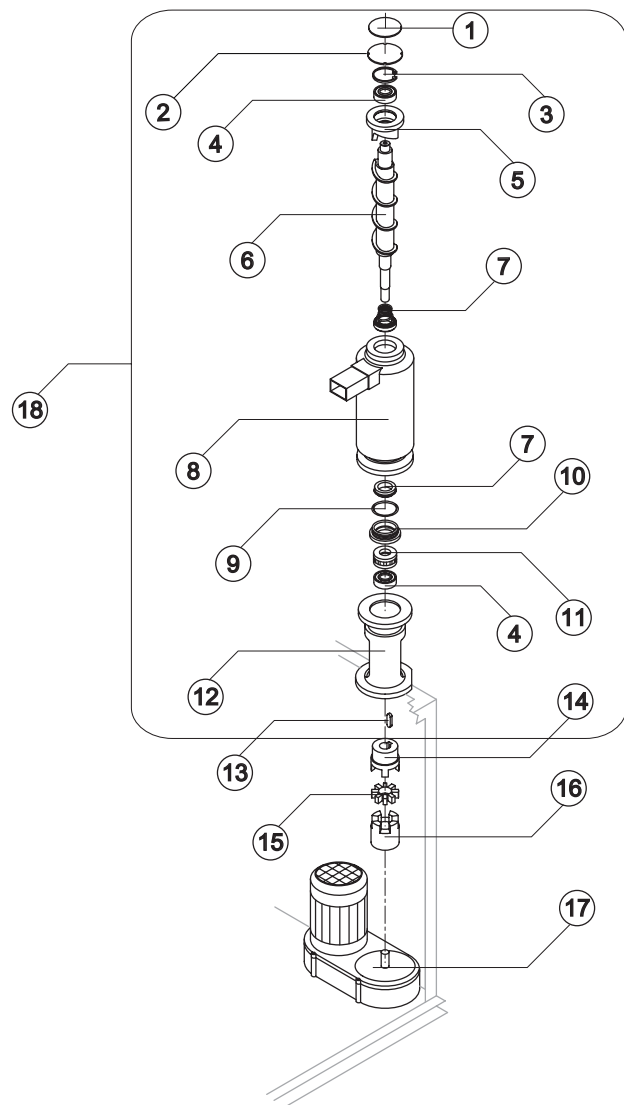
Ref.	Spare Description	Code
1	Insulating Top Panel	18165
2	Closing Disk	22670
3	Seeger	20116
4	INOX Screw	Current Version 20664
4	INOX Screw	Till s/n. 169028 15094
5	Shimming Disk	22829
6	Self-Lubricating Disk	20639
7	INOX Bearing	20648
8	Seal Ring	20640
9	Ice Breaker	20645
10	Auger with Screw	C20646
11	Ceramic Seal	20643
12	Foamed Evaporator	C11112
13	OR Gasket 4312 NBR	20205
14	Reduction Ring	20647
15	INOX Bearing	20113
16	Flange	20644
17	Rotation Sensor	23634
18	Semi-Joint Upper	D20642
19	Vibration-Damping Elastomer	20494
20	Semi-Joint Lower	D20493
21	Gearmotor	23638
22	Evaporator Assy	C11113

Rev. 1 - 12/6/2002



# G 1000

## EVAPORATOR



Ref.	Spare Description	Code
1	Insulating Panel	18125
2	Closing Disk	22670
3	Seeger	20116
4	INOX Bearing	20113
5	Ice Breaker	20503
6	Auger	See Note 20516
7	Ceramic Seal	20110
8	Foamed Evaporator	C11104
9	OR Gasket 4312 NBR	20205
10	Ring for Ceramic Seal	20504
11	Stainless Steel Thrust Bearing	20111
12	Flange	20482
13	Key	20431
14	Semi-Joint Upper	Current Version D20517
14	Semi-Joint Upper	Till s/n. 81178 D20493
15	Vibration-Damping Elastomer	20494
16	Semi-Joint Lower	D20493
17	Gearmotor	23571
18	Evaporator Assy	See Note C11106



Ref. 6 - For s/n prior the Code 81179 ask, besides the new Auger (Code 20516) also the Semi-Joint Upper (Code D20517).

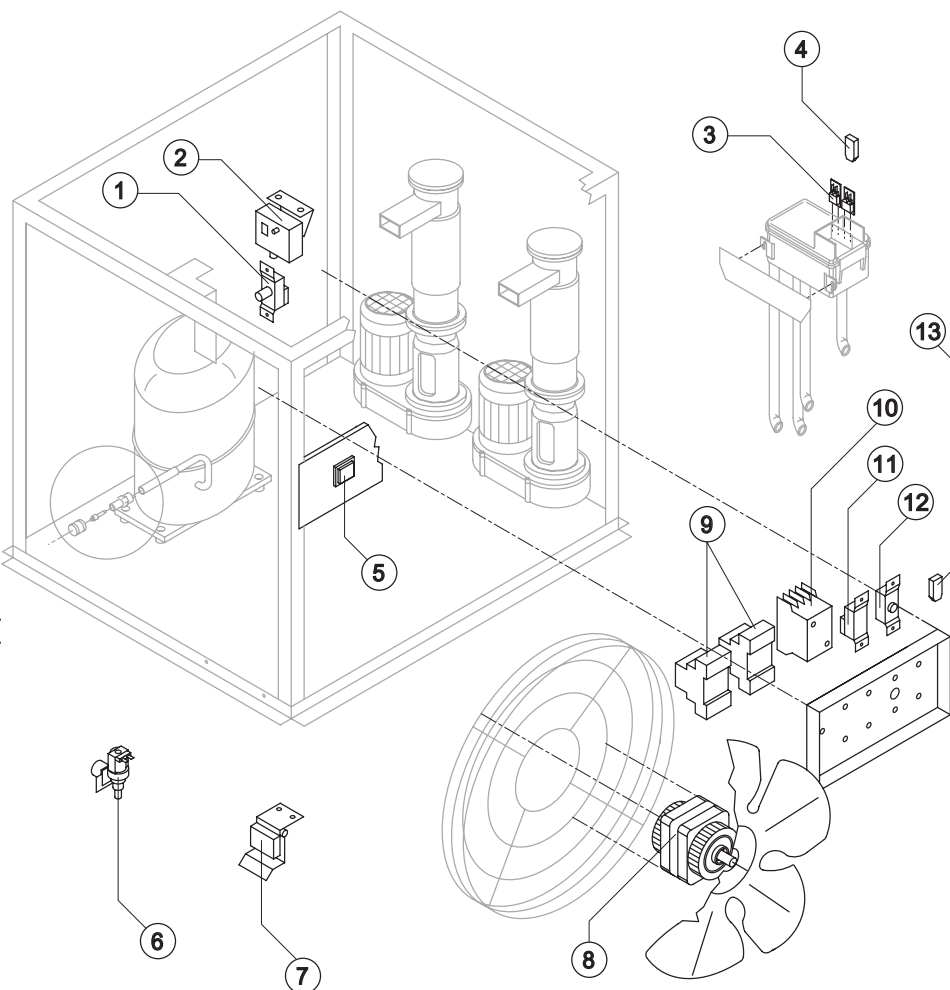
Ref. 18 -For s/n prior the Code 81179 ask, besides the new Evaporator Assy (Code C11106) also the Semi-Joint Upper (Code D20517).



# G 1000

## ELECTRIC PARTS

Rev. 1 - 12/6/2002



### Common Parts

Ref.	Spare Description	Code
1	Safety Pressure-Switch (Maximum Pressure)	23342
2	Safety Pressure-Switch (Minimum Pressure)	23577
3	Microswitch	23055
4	Anti Radio Interference Filter	400V 3N 50 Hz 23457
5	Green Light Switch	23327
6	Inlet Watervalue 1 Way	23001
7	Bin Level Control Switch	C22099
9	Rotation Sensor Switchboard	23633
10	Contactor	23147
12	Bin Thermostat	23421

### Parts for Air-Cooled Version Only

Ref.	Spare Description	Code
8	Fan Motor	See Table -
11	Condenser Pressure Switch	23175
13	Anti Radio Interference Filter	400V 3N 50 Hz 23459

### Ref. 8 - Fan Motor

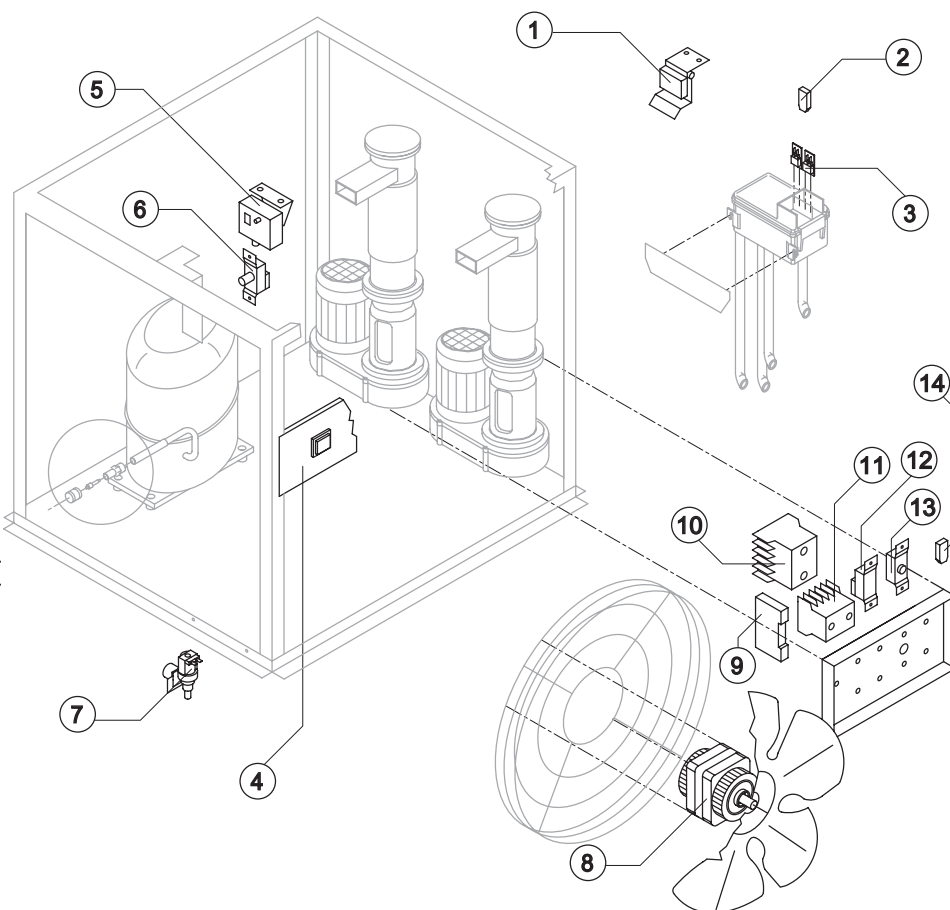
Tension	Code
400V 3N 50 Hz	23468
220/230V 3 60 Hz	23467



# G 1000

## ELECTRIC PARTS

Rev. 1 - 12/6/2002



### Common Parts

Ref.	Spare Description	Code
1	Bin Level Control Switch	C22099
2	Anti Radio Interference Filter 400V 3N 50 Hz	23457
3	Microswitch	23055
4	Green Light Switch	23327
5	Safety Pressure Switch (Minimum Pressure)	23577
6	Safety Pressure Switch (Maximum Pressure)	23342
7	Inlet Watervalue 1 Way	23001
9	Electronic Timer	23560
10	Contactor	23147
11	Contactor	23594
13	Bin Thermostat	23421

### Parts for Air-Cooled Version Only

Ref.	Spare Description	Code
8	Fan Motor See Table	-
12	Condenser Pressure Switch	23175
14	Anti Radio Interference Filter 400V 3N 50 Hz	23459

### Ref. 8 - Fan Motor

Tension	Code
400V 3N 50 Hz	23468
220/230V 3 60 Hz	23467