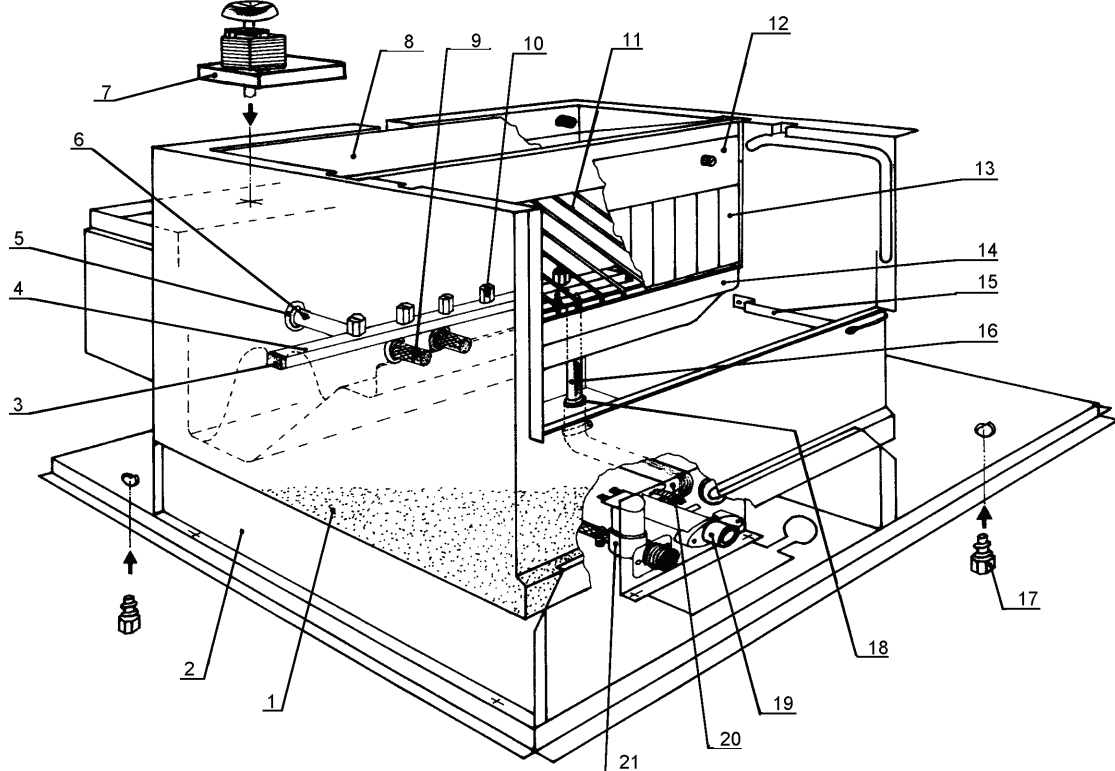


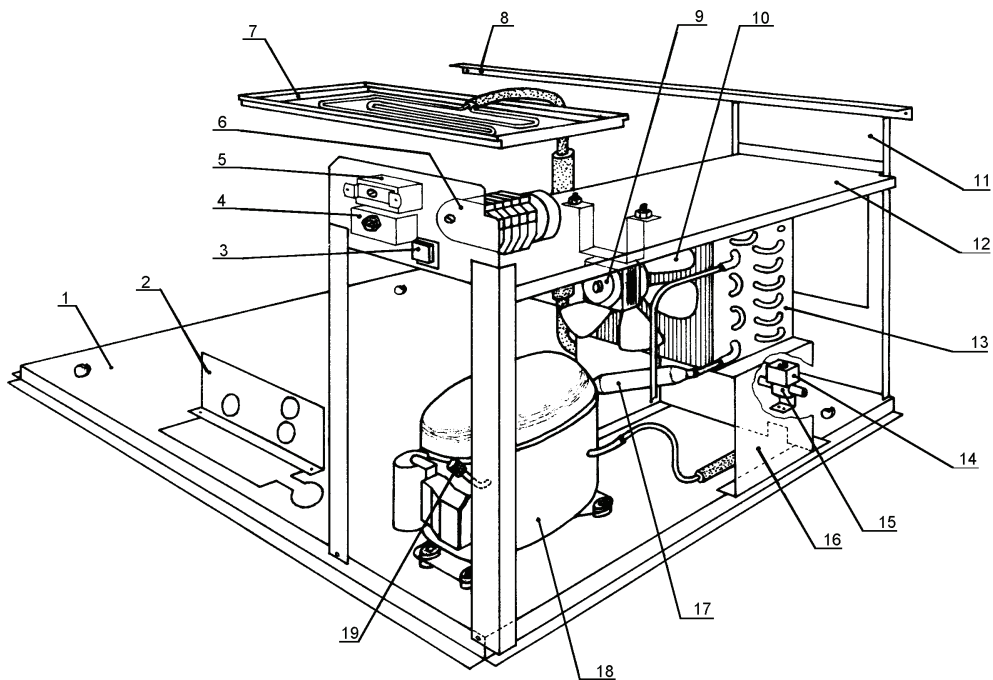
Ref.	Description	Refrigerant	A/W	Tension	Code
1	Front panel				22306
2	Door assembly				C10297
3	Top assembly				C22305
4	Right & front panel (fan side)				22303
5	Back panel				21160
6	Left panel				22304
7	Filtering panel				18076

Note:



Ref.	Description	Refrigerant	A/W	Tension	Code
1	Foamed bin				C26502
2	Bin support saddle				21157
3	Sprayers bar plug				10012
4	Sprayers bar assembly				C20267
5	Basin nipple				10160
6	Pump delivery pipe				13068
7	Pump assy			1	C23254
7	Pump assembly			2	C23416
7	Pump assembly			3	C23417
8	Evaporator cover				10023
9	Pump suction filter				20005
10	Sprayer				D20002
11	Ice cubes slide				D12008
12	Flags support assy				C22035
13	Flag				10005
14	Evaporator basin				10162
15	Bulbe thermostat tube				20017
16	Overflow pipe				13012
17	Foot				10017
18	Plastic nipple water outlet				10007
19	Exhaust manifold				10006
20	Water discharge pipe				13067
21	Inlet watervalue 1 way			1-2	23300
21	Inlet watervalue 1 way			3	23415

Note:



Ref.	Description	Refrigerant	A/W	Tension	Code
1	Base plate				21159
2	Support (water valve & discharge)				21149
3	Green light switch				23327
4	Evaporator thermostat				23591
5	Bin thermostat				23005
6	Timer			1	23222
6	Timer			2	23248
6	Timer			3	23259
7	Evaporator				D10046
8	Cross fixing panels				21162
9	Fan motor			1-2	23037
9	Fan motor			3	23265
10	Suction impeller			1-2	10213
10	Suction fan			3	20095
11	Back plate				21158
12	Fan motor & electrical components support plate				22302
13	Air condenser				20260
14	Hot gas coil			1-2	23091
14	Hot gas coil			3	23256
15	Hot gas valve body				20410
16	Air condenser support				21148
17	Molecular drier				14009
18	Compressor	R404A		1	23441
18	Compressor	R404A		2	23494
18	Compressor	R404A		3	23446
18	Compressor	R22		1	23313
18	Compressor	R22		2	23345
18	Compressor	R22		3	23369
19	Vacuum-charge valve device				14005
19	Vacuum-charge valve plug				14006
19	Vacuum-charge valve body				14007

Note: Code 23327 from September 1994. Before Code 23061.

Erklärung zu Ersatzteillisten in den Spalten Tension-Spannung

1	Spannung	220-240V	50Hz
2	Spannung	220-230V	60Hz
3	Spannung	110 115V	60Hz
4	Spannung	230V3P	50Hz
5	Spannung	400V	50Hz
6	Spannung	220-230V3P	60Hz
7	Spannung	440-460V3P	60Hz