

| | | G3161 |
|------|--|-----------|
| ITEM | DESCRIPTION | SPARES No |
| 1 | REAR HOB RAIL | 535330005 |
| 2 | FRONT HOB RAIL | 535330006 |
| 3 | RH OUTER SIDE PANEL | 535200001 |
| 4 | LH OUTER SIDE PANEL | 535200000 |
| 5 | CONTROL PANEL | 535330007 |
| 6 | RH HINGED DOOR ASSEMBLY (STANDARD) | 535330008 |
| 6.1 | DOOR HANDLE | 535290022 |
| 6.2 | DOOR CATCH | 535480054 |
| 6.3 | DOOR HINGE BUSH | 535480077 |
| 7 | LH HINGED DOOR ASSEMBLY (OPTION NOT SHOWN) | 535330009 |
| 7.1 | DOOR HANDLE | 535290022 |
| 7.2 | DOOR CATCH | 535480054 |
| | DOOR HINGE BUSH | 535480077 |
| 8 | TOP DOOR HINGE - RH (STANDARD) | 535200008 |
| 9 | BOTTOM DOOR HINGE - RH (STANDARD) | 535200009 |
| 10 | TOP DOOR HINGE - LH (OPTION NOT SHOWN) | 535200006 |
| 11 | BOTTOM DOOR HINGE - LH (OPTION NOT SHOWN) | 535200007 |
| 12 | DOOR KATCH KEEPER | 535480096 |
| 13 | DOOR SEAL | 535241010 |
| 14 | OVEN SHELF HANGER | 535200012 |
| 15 | OVEN SHELF | 535330010 |
| 16 | OVEN BASE TRAY | 535330011 |
| 17 | O/T CONTROL KNOB | 535290025 |
| 18 | OVEN CONTROL KNOB | 535290026 |
| 19 | PAN SUPPORT | 535290027 |
| 20 | ADJUSTABLE FOOT | 535290028 |
| 21 | REAR FIXED CASTOR (NOT SHOWN) | 534103055 |
| 22 | FRONT SWIVEL CASTOR (NOT SHOWN) | 530964350 |

CLEARED FOR PRODUCTION

| ISSUE | MOD No | ALTERATION | DRAWN BY | DATE |
|-------|--------|------------------|------------|----------|
| A | 6422 | PRODUCTION ISSUE | IAIN JAMES | 09/08/11 |
| | | | | |
| | | | | |
| | | | | |

IF IN DOUBT ASK
DO NOT SCALE
FIRST ANGLE PROJECTION

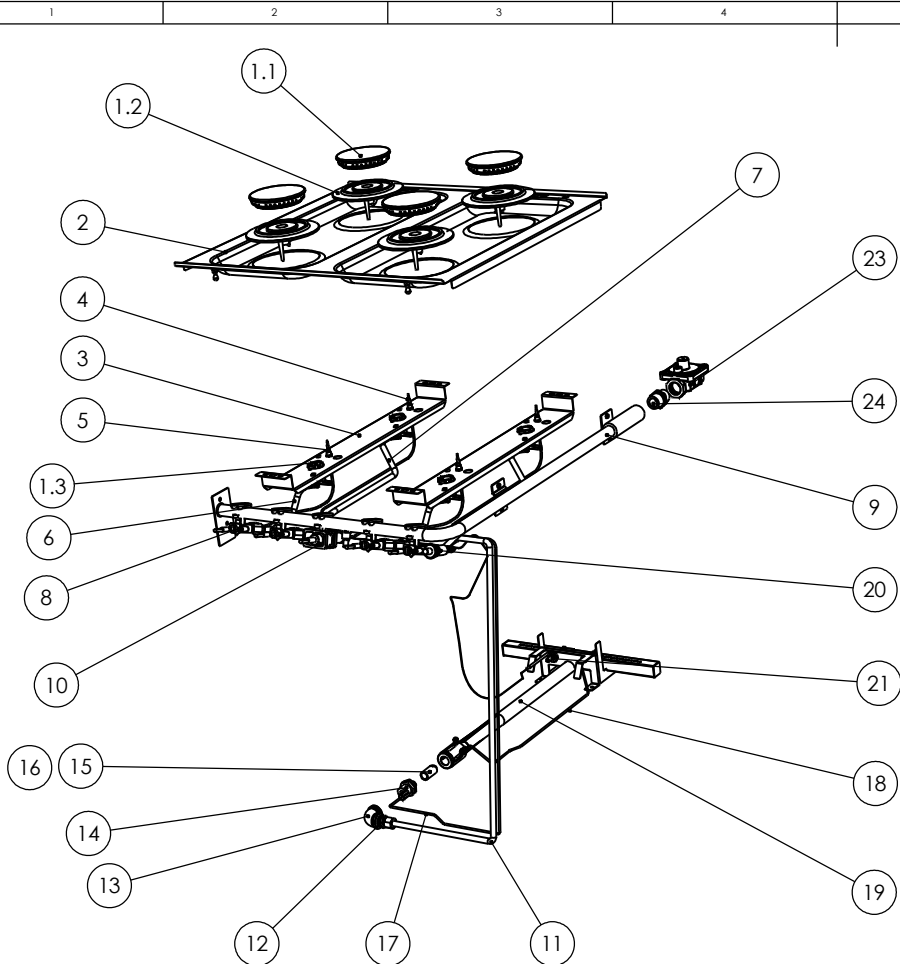
UNLESS OTHERWISE SPECIFIED:
DIMENSIONS ARE IN MILLIMETERS
TOLERANCES:
LINEAR: ±0.5mm
ANGULAR: ±0.5 DEG

DEBUR AND
BREAK SHARP EDGES

WEIGHT: g



| | | | |
|--------------------------|----------------|------------------------|----------|
| DRAWN: IAIN JAMES | PRODUCT | G3161 | |
| DATE: 31/05/11 | TITLE | SPARES-FITMENTS | |
| SCALE: 1:10 | DRAWING NUMBER | AA48642 | ISSUE |
| MATL: - | THICKNESS: | | A |
| FINISH: | BIN No: | | |
| PART No: | | | |



| | | G3161 | G3124 |
|-------|---------------------------------------|-----------|-----------|
| ITEM | DESCRIPTION | SPARES No | SPARES No |
| 1 | O/T BURNER ASSEMBLY COMPLETE | 535290006 | 535290006 |
| 1.1 | O/T BURNER CAP ASSEMBLY | 535290000 | 535290000 |
| 1.2 | O/T BURNER BASE | 535290001 | 535290001 |
| 1.3 | O/T INJECTOR HOLDER NAT GAS & PROPANE | 535290003 | 535290003 |
| 1.3.1 | O/T 1.93 NAT GAS INJECTOR | 535290004 | 535290004 |
| 1.3.2 | O/T 1.2 PROPANE INJECTOR | 535290005 | 535290005 |
| 1.3.3 | 8mm OLIVE | 535480027 | 535480027 |
| 1.3.4 | TUBE NUT | 535480028 | 535480028 |
| 2 | HOB PANEL | 535430010 | 535430010 |
| 3 | O/T BURNER SUPPORT BAR | 535290002 | 535290002 |
| 4 | O/T REAR THERMOCOUPLE | 535480012 | 535480012 |
| 5 | O/T FRONT THERMOCOUPLE | 535480011 | 535480011 |
| 6 | O/T FRONT FLEXI PIPE C/W OLIVES | 535400045 | 535400045 |
| 7 | O/T REAR FLEXI PIPE C/W OLIVES | 535400055 | 535400055 |
| 8 | O/T CONTROL VALVE NAT GAS & PROPANE | 535200021 | 535200021 |
| 8.1 | 8MM OLIVE | 535480027 | 535480027 |
| 8.2 | TUBE NUT | 535290007 | 535290007 |
| 8.3 | NAT GAS BYPASS SCREW (76) | 535290008 | 535290008 |
| 8.4 | PROPANE BYPASS SCREW (51) | 535290009 | 535290009 |
| 9 | FLOAT RAIL | 535330000 | 535360000 |
| 10 | OVEN THERMOSTAT NAT GAS & PROPANE | 535241007 | N/A |
| 10.1 | 10MM OLIVE | 535290012 | N/A |
| 10.2 | TUBE NUT | 535290013 | N/A |
| 10.3 | NAT GAS BYPASS SCREW (60) | 535330002 | N/A |
| 10.4 | PROPANE BYPASS SCREW (44) | 535330003 | N/A |
| 11 | OVEN FLEXI PIPE C/W OLIVES | 535480082 | N/A |
| 12 | OVEN PIPE COUPLING | 535480042 | N/A |
| 13 | ELBOW | 535480041 | N/A |
| 14 | INJECTOR HOLDER | 535480035 | N/A |
| 15 | OVEN BURNER INJECTOR NAT GAS | 535480038 | N/A |
| 16 | OVEN BURNER INJECTOR PROPANE | 535480039 | N/A |
| 17 | OVEN THERMOCOUPLE EXTENSION | 535400120 | N/A |
| 18 | OVEN THERMOCOUPLE | 535400180 | N/A |
| 19 | OVEN BURNER | 535330004 | N/A |
| 20 | OVEN PIZO IGNITER | 535010000 | N/A |
| 21 | OVEN IGNITON ELECTRODE | 535480033 | N/A |
| 22 | OVEN IGNITION LEAD (NOT SHOWN) | 535290016 | N/A |
| 23 | GOVERNOR | 535480015 | 535480015 |
| 24 | 3/4" FITTING | 535480016 | 535480016 |
| | CONVERSION KIT NAT GAS TO PROPANE | 535330012 | 535360003 |
| | CONVERSION KIT PROPANT TO NAT GAS | 535330013 | 535360004 |

CLEARED FOR PRODUCTION

| ISSUE | MOD No | ALTERATION | DRAWN BY | DATE |
|-------|--------|------------------|------------|----------|
| A | 6422 | PRODUCTION ISSUE | IAIN JAMES | 09/08/11 |
| | | | | |
| | | | | |
| | | | | |

IF IN DOUBT ASK
DO NOT SCALE
FIRST ANGLE PROJECTION

UNLESS OTHERWISE SPECIFIED:
DIMENSIONS ARE IN MILLIMETERS
TOLERANCES:
LINEAR: ±0.5mm
ANGULAR: ±0.5 DEG

DEBUR AND
BREAK SHARP EDGES

WEIGHT: g



| | | | |
|--------------------------|----------|--------------------------|----------|
| DRAWN: IAIN JAMES | PRODUCT | G3161/24 | |
| DATE: 31/05/11 | TITLE | SPARES - CONTROLS | |
| SCALE: 1:7.5 | | DRAWING NUMBER | ISSUE |
| MATL: N/A | | AA48641 | A |
| THICKNESS: | FINISH: | | |
| BIN No: | PART No: | | |