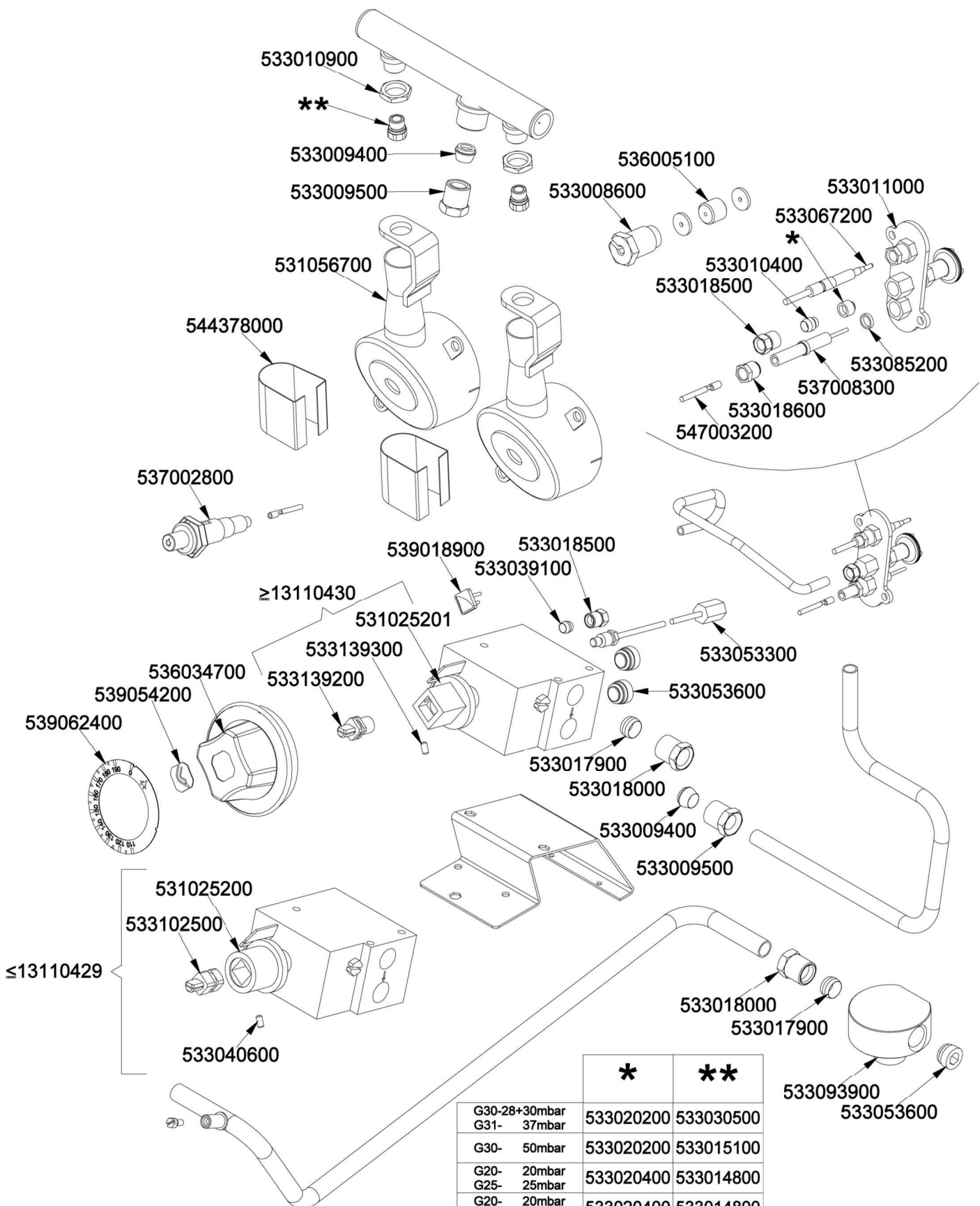


560073300M00P00



	*	**
G30-28+30mbar	533020200	533030500
G31- 37mbar	533020200	533015100
G30- 50mbar	533020400	533014800
G20- 20mbar	533020400	533014800
G25- 25mbar	533020400	533014900
G20- 20mbar DE-AT	533020400	533030700
G25- 20mbar	533020400	533030700
G25- 25mbar NL	533020400	533030700

Page	Pos	Code	Description
001		531049300	BASKET 196X235X090 F8T-63G
001		531054300	TANK FILTER FOR F 8T-G 60T
001		536001700	GRIP D.25*19*M6
001		544535700	TANK LID OF F 8T-G
001		541201000	UPPER PLATE FOR F 8 T-63G
001		533010200	BICONE 18S
001		533010100	3/4 D. 18 PIPE UNION
001		533009600	DRAIN COCK HANDLE
001		531000100	DRAIN COCK 3/4"
001		536000300	FIXED GRIP D.15*25*M6
001		544508100	LHD SIDE OF 60T APPLIANCES
001		537010000	SAFETY THERMOSTAT 220°C SINGLEPHASE
001		533044401	M8 THREADED CAP FOR SEC.THERMOSTAT
001		541192400	CONTROL PANEL S607090 F 8T-63G
001		544120300	DRAIN PIPE 22 FOR COCK 3/4"G
001		544508000	RHD SIDE OF 60T APPLIANCES
001		533010500	LEG M10*25 D.40
002		533010900	NUT M14*1 H.4
002		533009400	BICONE 10S
002		533009500	NIPPLE FOR BICONE 10S
002		531056700	BURNER FOR FRYER 60T+55
002		544378000	BOCCOLA REG.ARIA BRU.F13T S70
002		537002800	PIEZOELECTRIC IGNITION M18 WITH NUT
002		536005100	GRAPHITE §07,4 GASKET
002		533008600	STUFFING BOX M9*1
002		533011000	PILOT BURNER 3 FLAMES 320
002		533067200	THERMOCOUPLE 220+500 M9*1 CUT-OFF
002		533010400	BICONE D.6
002		533018500	FITTING FOR BICONE D.6 M10*1
002		533085200	SPACER FOR PILOT PLUG
002		537008300	ROUND PLUG §2,4- LONG ELECTRODE
002		533018600	PLUG FITTING
002		547003200	HIGH-VOLTAGE CABLE TUBE.§2 L=500
002		533039100	BICONE §6
002		539018900	INDEX FOR KNOB W/RED SIGN
002		531025201	EUROSIT VALVE FQ 110-190°C
002		533139300	BURNISH HEADLESS SCREW M05*05 PCEI
002		533139200	SHORT PIVOT FOR BRASS KNOB
002		536034700	KNOB §77 4P. §08*6,5 F§30
002		539054200	STAMP Ø20,5 CR."L" LOTUS R.
002		539062400	RED STICKING DISK 72 (110,190°
002		533053300	THERMOCOUPLE EXTENSION M9*1
002		533053600	EUROSIT VALVE PLUG
002		533017900	BICONE D.12
002		533018000	ELBOW FOR BICONE D.12 3/8 RS L20
002		531025200	EUROSIT VALVE FQ 110-190°C
002		533102500	SHORT PIVOT FOR PLASTIC KNOB
002		533040600	HEADLESS SCREW M4*8
002		533093900	FITTING GAS ENTRY 1/2G 2OUT 3/8G
002		533020200	PILOT JETS 0160 FOR LPG §30
002		533020400	NOZZLE 0160 (NATURAL GAS) 51

Page	Pos	Code	Description
002		533030500	NOZZLE §90 CH12X14 G30/CE
002		533015100	NOZZLE §80 CH12*14 F-FP/CP6
002		533014800	NOZZLE §135 CH12*14,0
002		533014900	NOZZLE §150 CH12*14 F-FQ5 L-FQ6
002		533030700	NOZZLE §140 CH12X14 AARD-FQ6