

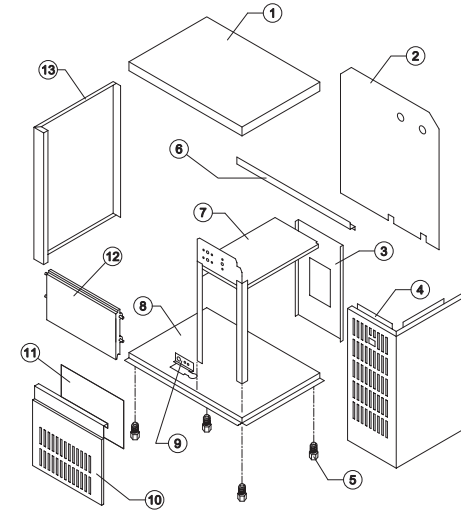


IC 30

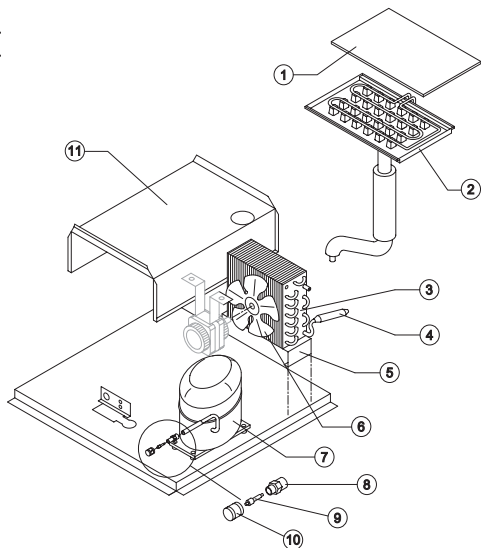
LIST OF THE EXPLODED VIEWS



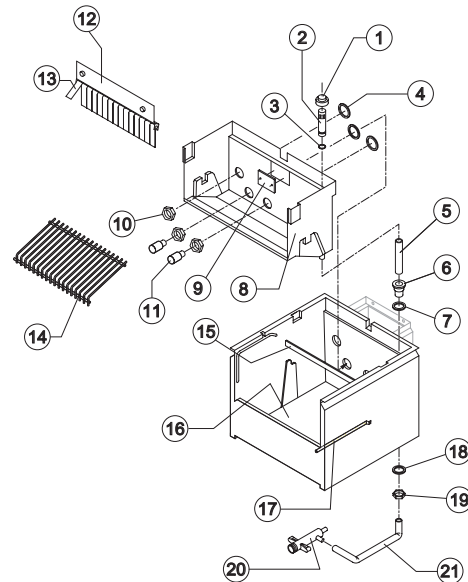
SHELL ASSY



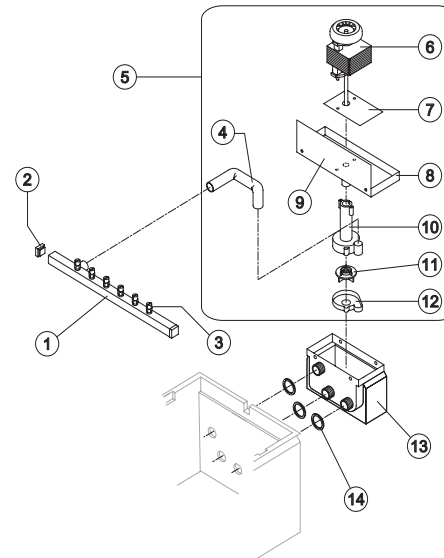
COOLING SYSTEM



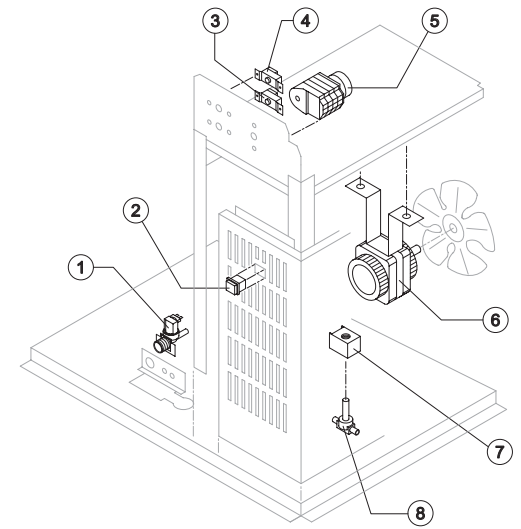
HYDRAULIC CIRCUIT



SPRAYER PUMP



ELECTRIC PARTS

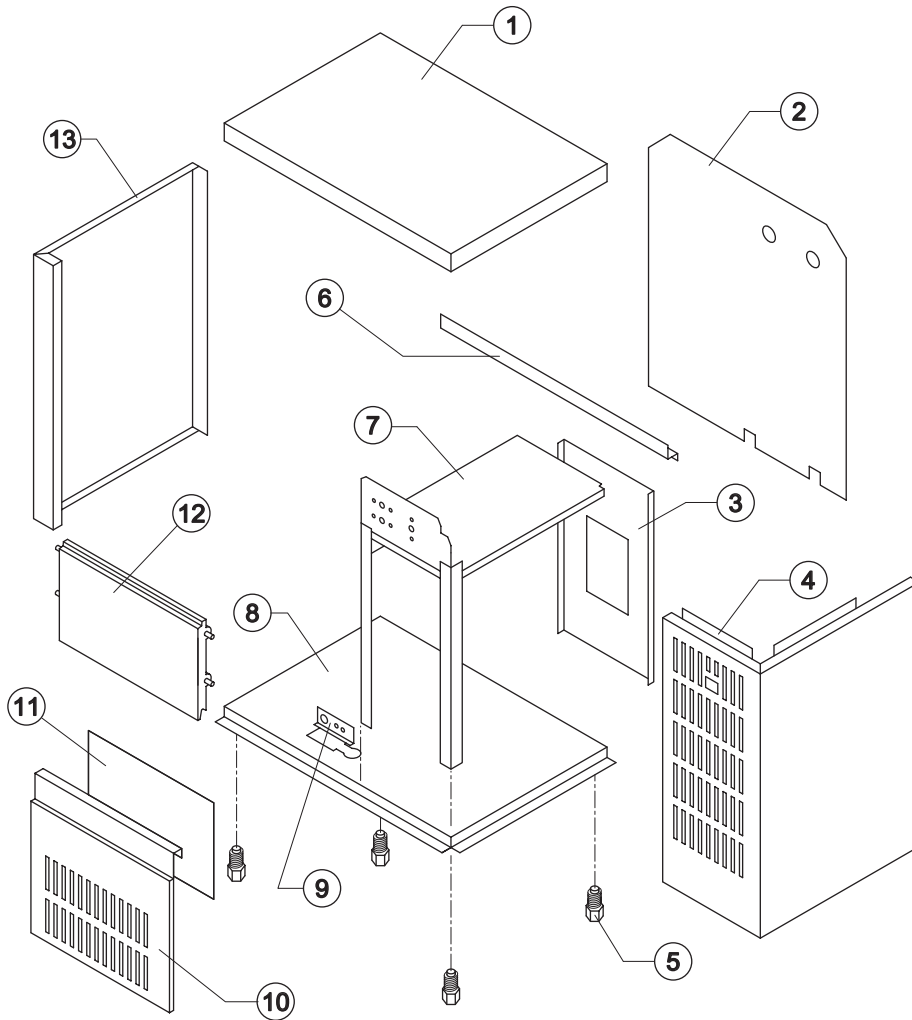


Rev. 3 - 2/7/2003



IC 30

SHELL ASSY



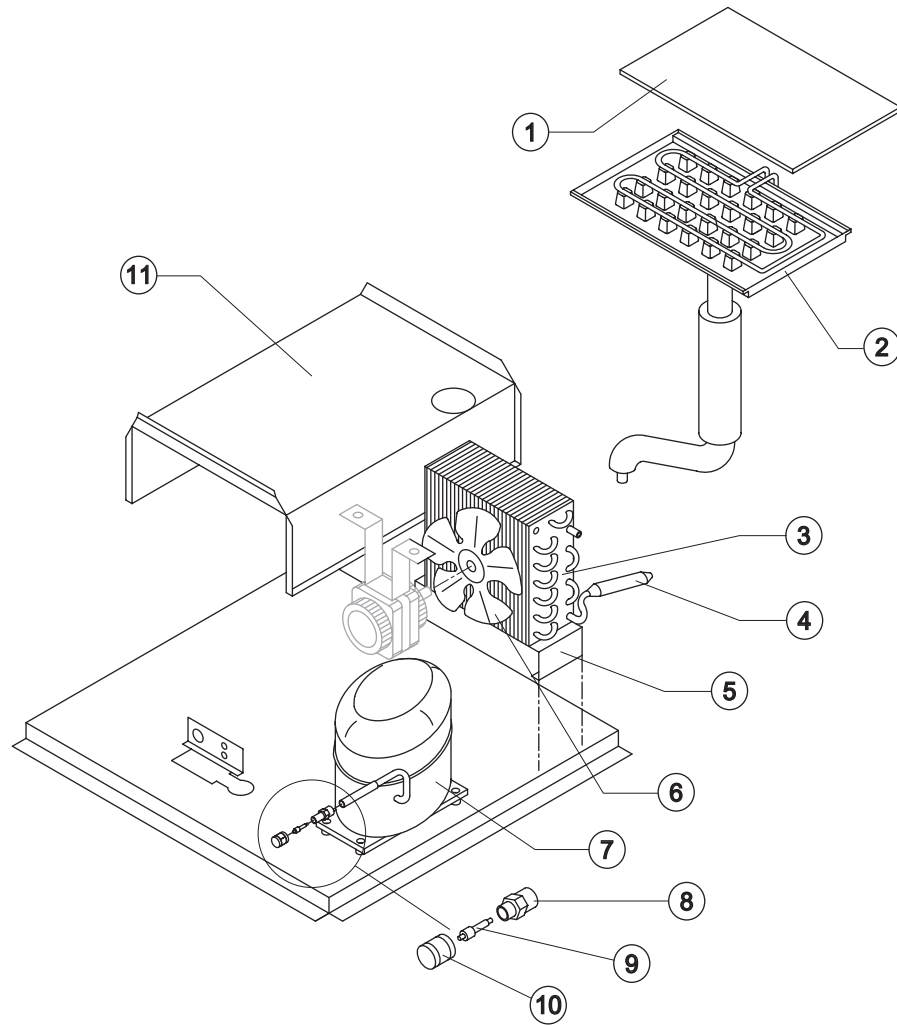
Ref.	Spare Description	Code
1	Top Assembly	C22305
2	Back Panel	21160
3	Back Plate	21158
4	Right & Front Panel (Fan Side)	22303
5	Foot	10017
6	Cross Fixing Panels	21162
7	Fan Motor & Electrical Components Support Plate	22302
8	Base Plate	21159
9	Support (Watervalue & Discharge)	21149
10	Front Panel	22306
11	Filtering Panel	18076
12	Door Assy	C10297
13	Left Side	22304

Rev. 3 - 2/7/2003



IC 30

COOLING SYSTEM



Ref.	Spare Description	Code
1	Evaporator Cover	10023
2	Evaporator	See Table
3	Air Condenser	20260
4	Molecular Drier	14009
5	Air Condenser Support	21148
6	Suction Impeller	See Table
7	Compressor	See Table
8	Vacuum-Charge Valve Body	14007
9	Vacuum-Charge Valve Device	14005
10	Vacuum-Charge Valve Plug	14006
11	Bin Support Saddle	21157

Ref. 2 - Evaporator

Kind of Cube	Code
18 g. (Standard)	D10046
33 g. (Big)	D10089
13 g. (Small)	D10417

Ref. 6 - Suction Impeller

Tension	Code
220/240V 50 Hz	10213
220/230V 60 Hz	10213
110/115V 60 Hz	20095

Ref. 7 - Compressor

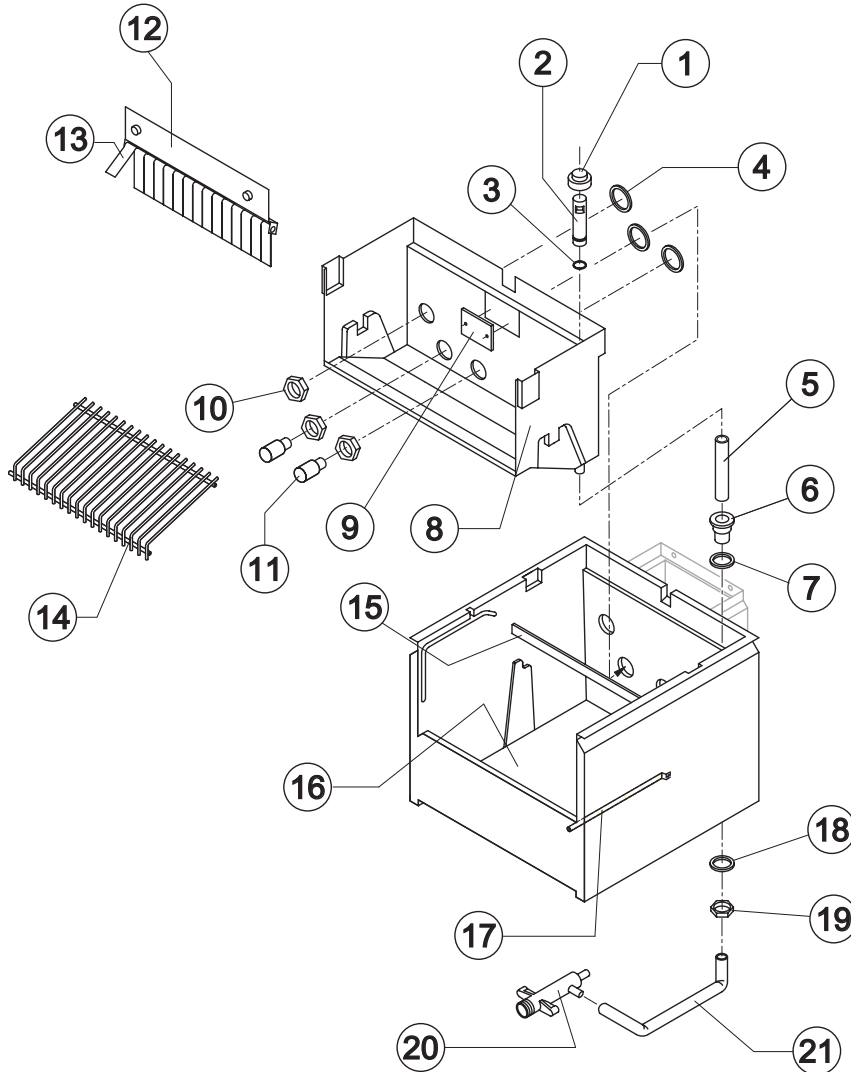
Tension	Code
220/240V 50 Hz	23441
220/230V 60 Hz	23494
110/115V 60 Hz	23446

! Ref. 2 - Before s/n. 189612 (for "small size" ice cube only) ask, beside the Evaporator, also the Evaporator Support.



IC 30

HYDRAULIC CIRCUIT



Ref.	Spare Description	Code
1	Overflow Cap	10305
2	Overflow Pipe	10133
3	Or Gasket for Overflow Pipe	20233
4	Silicone Seal for Pump Basin	13069
5	Overflow Pipe	Current Version 13107
5	Overflow Pipe	Till s/n. 64147 13012
6	Plastic Nipple Water Outlet	10007
7	Silicone Gasket	13006
8	Inner Basin	10162
9	Slide Keep Plate	10009
10	Nut for Basin Connections	10159
11	Pump Suction Filter	20005
12	Flags Support Assy	C22035
13	Flag	10005
14	Ice Cubes Slide	See Table -
15	Inner Basin Back	Till s/n. 194179 22251
16	Foamed Basin	C11122
17	Bulbe Thermostat Tube	20522
18	Semirigid Polyethylene Gasket	13007
19	Bin Discharge Nut	10096
20	Discharges Manifold	10006
21	Water Discharge Pipe	13067

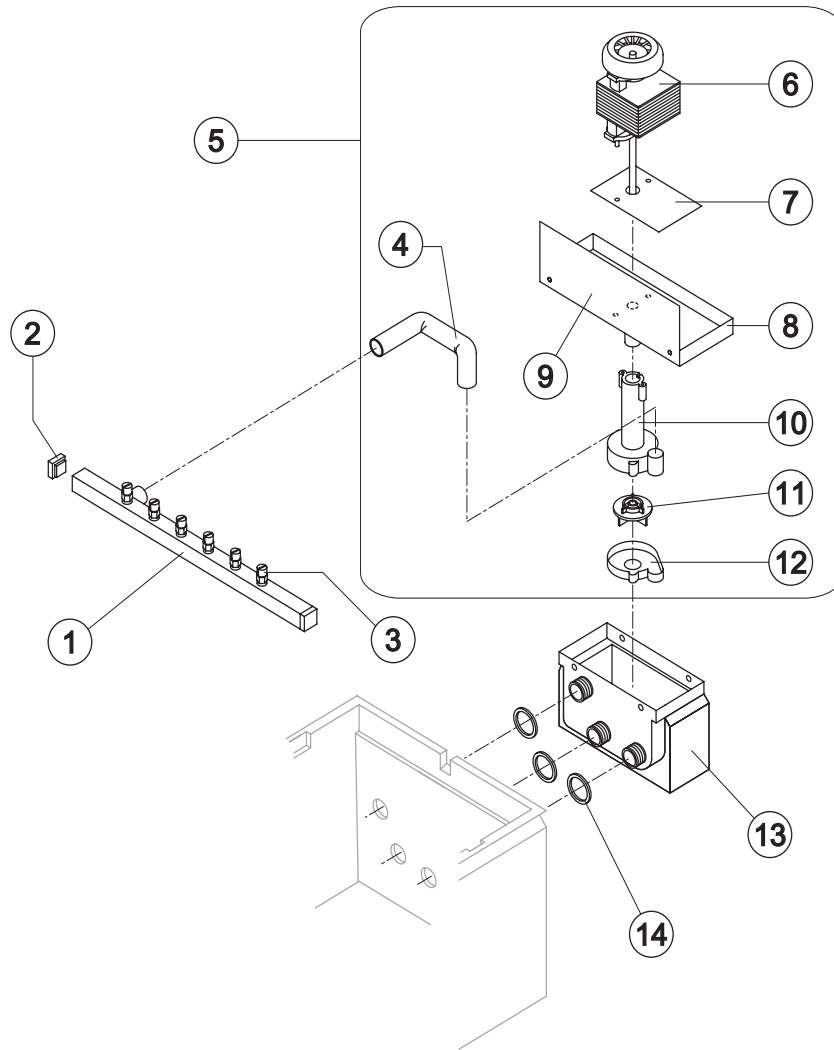
Ref. 14 - Ice Cubes Slide

Kind of Cube	Code
18 g. (Standard)	D12008
33 g. (Big)	D12030
13 g. (Small)	D12038



IC 30

SPRAYER PUMP



Ref.	Spare Description	Code
1	Sprayers Bar Assembly	See Table
2	Sprayers Bar Plug	10012
3	Sprayer	D20002
4	Pump Delivery Pipe	13068
5	Pump Assembly	See Table
6	Pump Motor	See Table
7	Heat Dissipator	22430
8	Pump Motor Holder	10161
9	Basin/Pump Fender case	22763
10	Pump Body	10065
11	Pump Impeller	10066
12	Diffuser	10067
13	Insulated Pump Basin	C11048
14	Silicone Seal for Pump Basin	13069

Ref. 1 - Sprayers Bar Assembly

Kind of Cube	Code
18 g. (Standard)	C20573
33 g. (Big)	C20582
13 g. (Small)	C20571

Ref. 5 - Pump Assembly

Tension	Code
220/240V 50 Hz	C23254
220/230V 60 Hz	C23416
110/115V 60 Hz	C23417

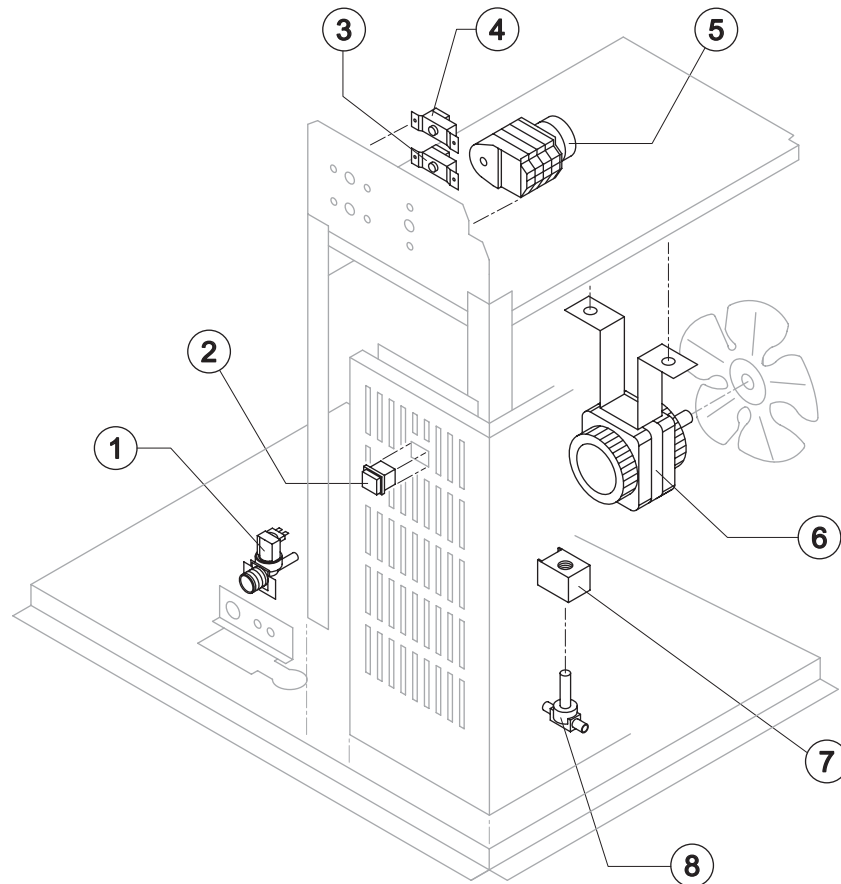
Ref. 6 - Pump Motor

Tension	Code
220/240V 50 Hz	23073
220/230V 60 Hz	23187
110/115V 60 Hz	23188

Rev. 3 - 2/7/2003



Rev. 3 - 2/7/2003



Ref.	Spare Description	Code
1	Inlet Watervalue 1 Way	See Table
2	Green Light Switch	23327
3	Evaporator Thermostat	23591
4	Bin Thermostat	23005
5	Timer	See Table
6	Fan Motor	See Table
7	Hot Gas Coil	See Table
8	Hot Gas Valve Body	20410

Ref. 1 - Inlet Watervalue 1 Way

Tension	Code
220/240V 50 Hz	23300
220/230V 60 Hz	23300
110/115V 60 Hz	23415

Ref. 6 - Fan Motor

Tension	Code
220/240V 50 Hz	23037
220/230V 60 Hz	23037
110/115V 60 Hz	23683

Ref. 5 - Timer

Tension	18g Cube	33g Cube	13g Cube
220/240V 50 Hz	23222	23248	23247
220/230V 60 Hz	23248	23396	23247
110/115V 60 Hz	23259	23397	23258

Ref. 7 - Hot Gas Coil

Tension	Code
220/240V 50 Hz	23091
220/230V 60 Hz	23091
110/115V 60 Hz	23256