



Würfeleisbereiter kl. Würfel, Luftk., 770 kg/24 h, ohne Speicher

Artikel-Nr.
711068 (VM1700A)

Explosionszeichnung / Ersatzteile

Bitte bei Ersatzteilbestellung immer Artikelnummer und
Seriennummer mit angeben!



VM 1700

LIST OF THE EXPLODED VIEWS



SHELL ASSY

COOLING SYSTEM

HYDRAULIC CIRCUIT

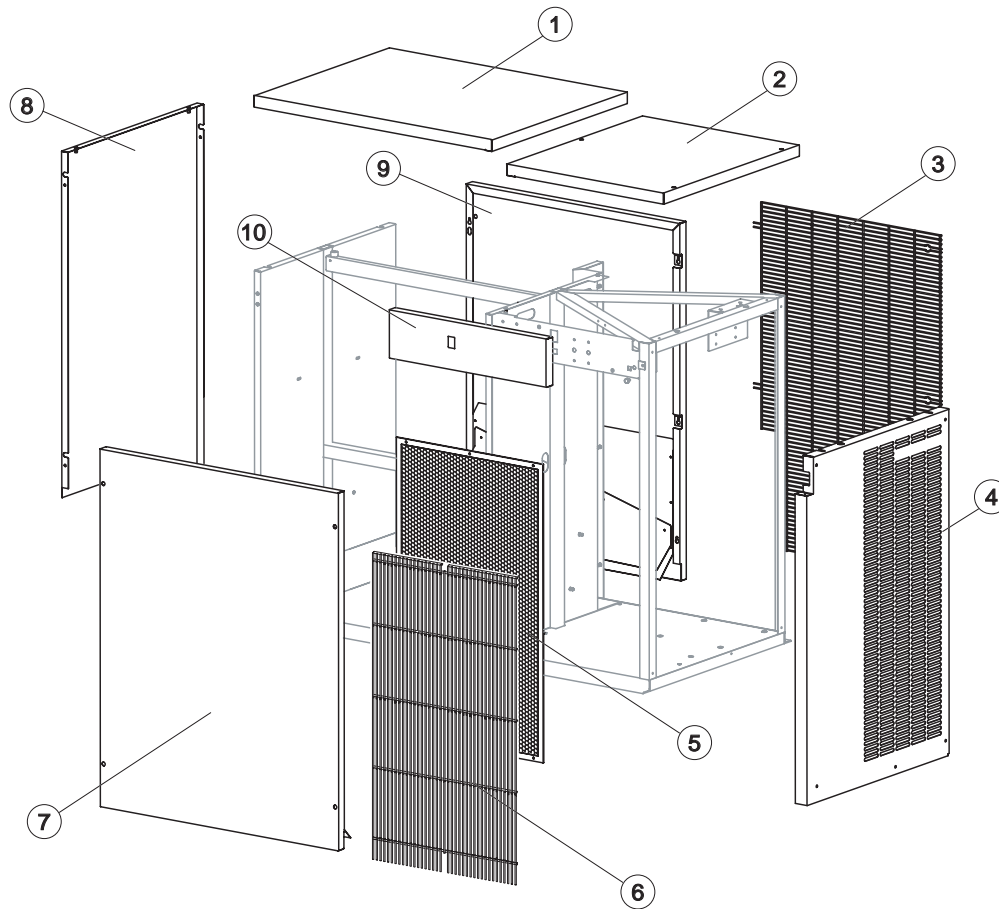
SPRAYER PUMP

ELECTRIC PARTS



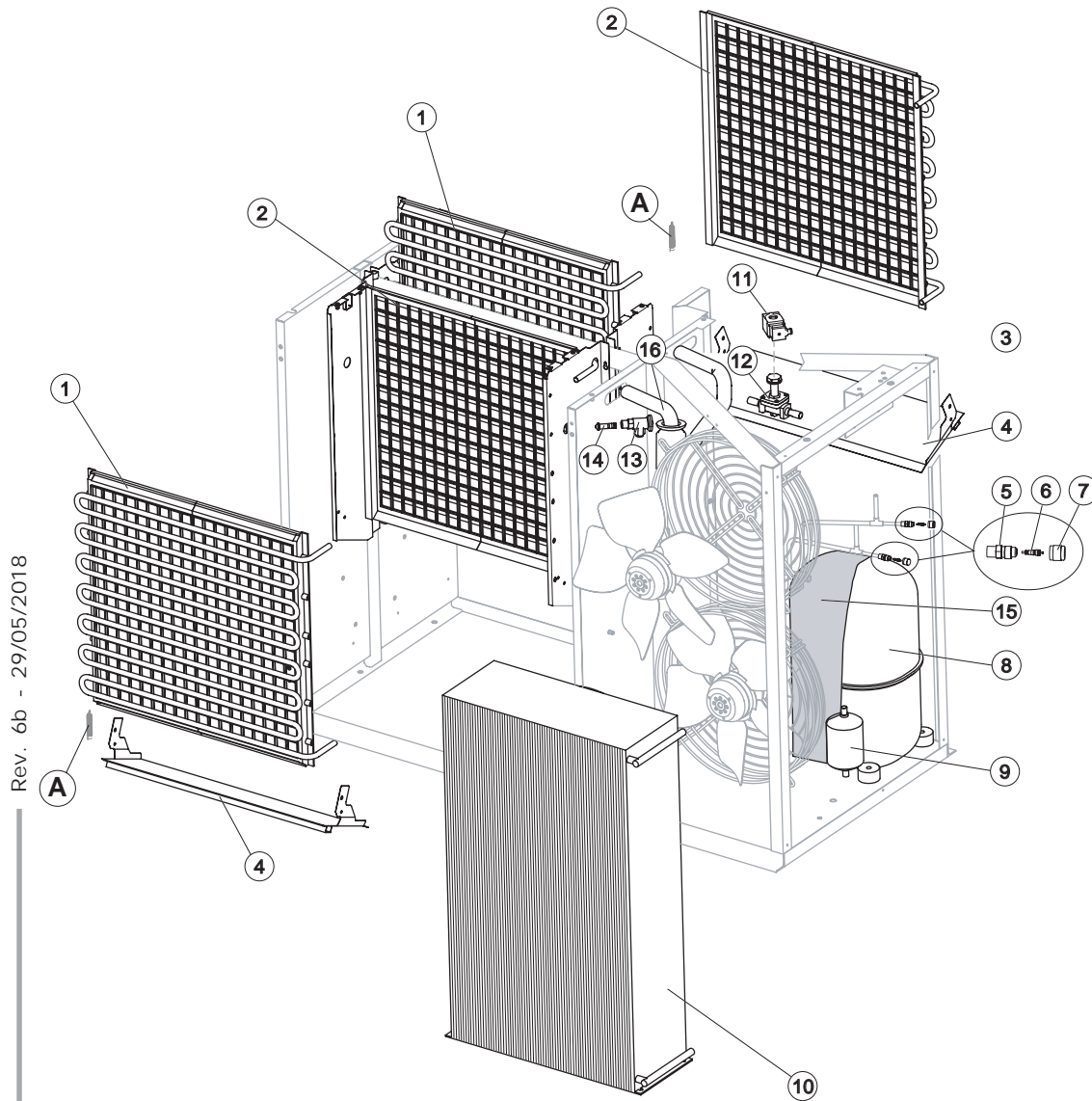
VM 1700

SHELL ASSY



Ref.	Spare Description	Code
1	Top-Evaporator Side	C22371
2	Top-Condenser Side	22370
3	Rear Grid	12077
4	Right Side Panel	22364
5*	Filter	18192
6	Front Grid	12079
7	Front Panel Assembly	C22368
8	Left Side Panel	22366
9	Rear Panel Assembly	C22367
10	Electrical Box Cover Panel	22623

Rev. 6b - 29/05/2018



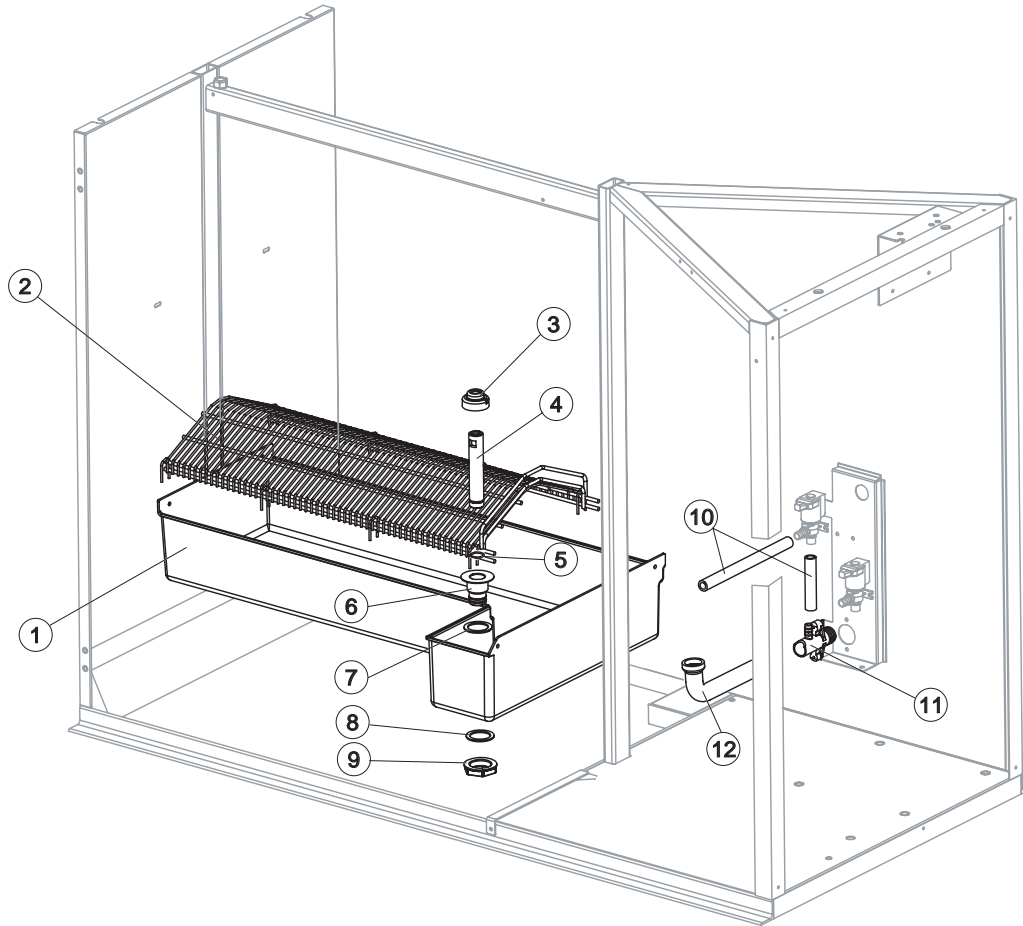
Rev. 6b - 29/05/2018

Ref.	Spare Description	Code
1	Evaporator (Front)	D10504
2	Evaporator (Back)	D10505
4	Horizontally Hinged Panel	22385
5	Vacuum-Charge Valve Body	14007
6*	Vacuum-Charge Valve Device	14005
7*	Vacuum-Charge Valve Plug	14006
8	Compressor	See Table
9*	Solid Filter	14255
10	Air Condenser	20830
11*	Hot Gas Valve Coil	231294
12*	Hot Gas Valve Body	20832
13	Expansion Valve	20826
14	Orifice	Current Version 20946
14	Orifice	Till s/n. 471749 20794
15	Compressor Insulation	18254
16	Suctin Line	for the spare parts code give us the s/n.

⚠ Eliminated the Spring (horizontally hinged panel) ref. A, suggested removal even from the models where they are present.

Ref. 8 - Compressor

Voltage	Code	Till s/n. 681898
T15	231100	23817
T16	231101	23824



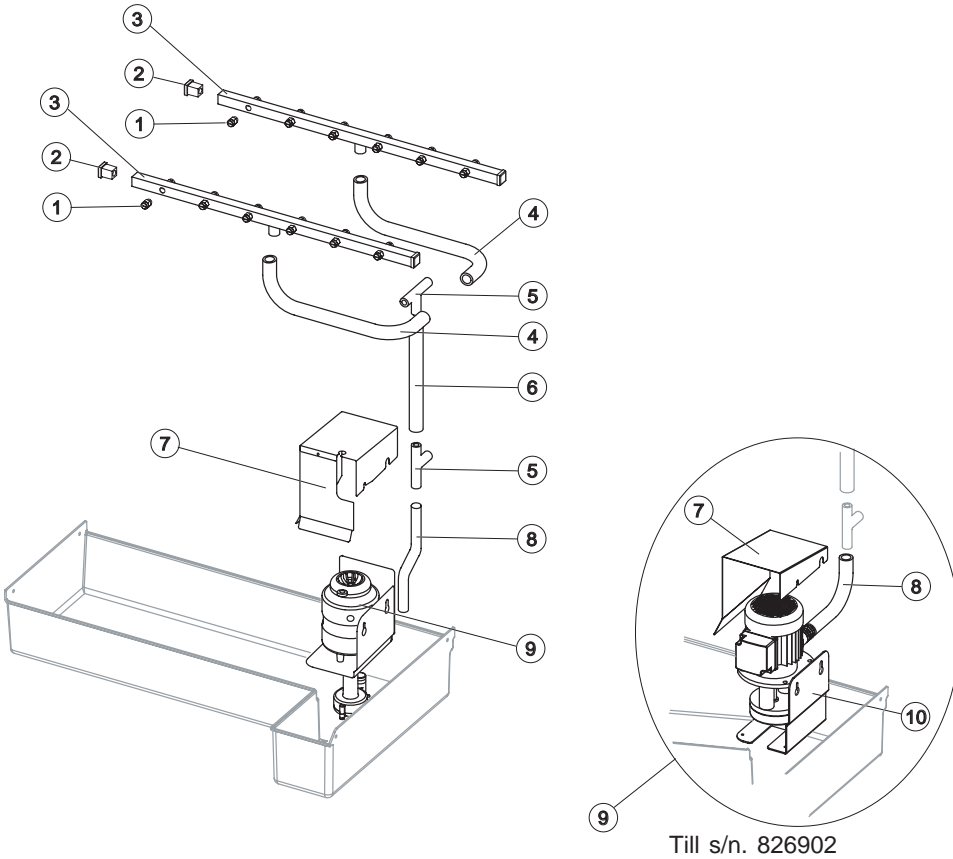
Rev. 6b - 29/05/2018

Ref.	Spare Description	Code
1	Water Basin	10501
2	Ice Cubes Slide	D12078
3*	Overflow Cap	10305
4*	Overflow Pipe	10399
5*	OR Gasket for Overflow Pipe	20233
6	Overflow Pipe Nipple	10472
7	Silicone Gasket	13006
8	Semirigid Polyethylene Gasket	13007
9	Bin Discharge Nut	10096
10	Connection Pipe	13102
11	Discharge Nipple	10431
12	Basin Discharge Pipe	13174



VM 1700

SPRAYER PUMP

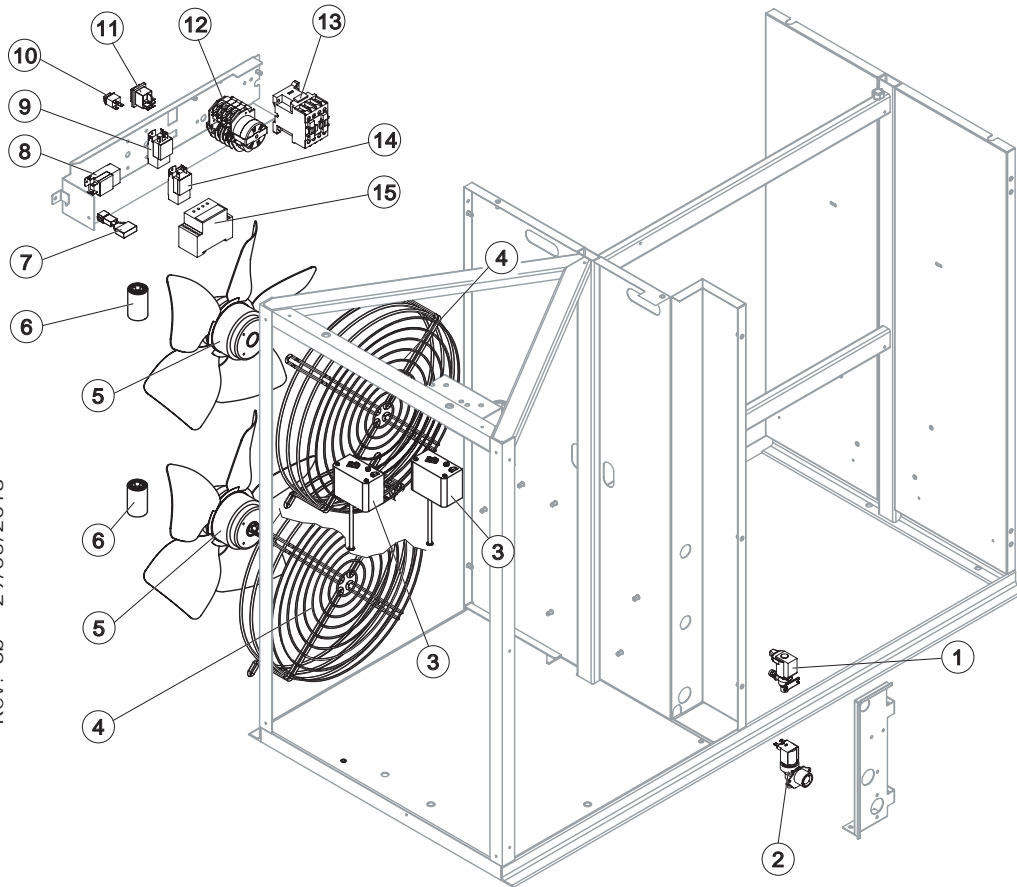


Ref.	Spare Description	Code	
1	Sprayer	D20002	
2	Sprayer Bar Plug	10012	
3*	Sprayer Bar Assembly	C20617	
4	Sprayer Bar Connection Pipe	13134	
5	Plastic "T" Joint - ø 20	10082	
6	Connection Pipe	13111	
7	Pump Protection Panel	Current Version	221704
7	Pump Protection Panel	Till s/n. 826902	22377
8	Connection Pipe	Current Version	C13113
8	Connection Pipe	Till s/n. 826902	13005
9*	Pump	See Table	
10	Pump Motor Support	Till s/n. 826902	22383

Ref. 9* - Pump

Voltage	Current Version	Till s/n. 826902
T15	C231218	K231218
T16	C231218	K231218

Rev. 6b - 29/05/2018



Rev. 6b - 29/05/2018

Ref.	Spare Description	Code
1*	Water Outlet Valve	23537
2*	1 Way-Water Inlet Valve	23819
3	Safety Pressure Switch	23729
4	Fan Motor Grid	12053
5*	Fan Motor	23468
6*	5 μ F Capacitor	23469
7	Anti Radio Interference Filter	Only T15 C23459
8*	Condenser Pressure Switch	23175
9*	Evaporator Thermostat	R23591
10	"Cleaning" Switch	23619
11*	Green Light Switch (On-Off)	23327
12*	Timer	See Table
13*	Contactor	23398
14*	Bin Thermostat	R23005
15	Voltage Control Relay	See Table

Ref. 12* - Timer

Voltage	Code
T15	23635
T16	23632

Ref. 15 - Voltage control relay

Voltage	Code
T15	23903
T16	23904