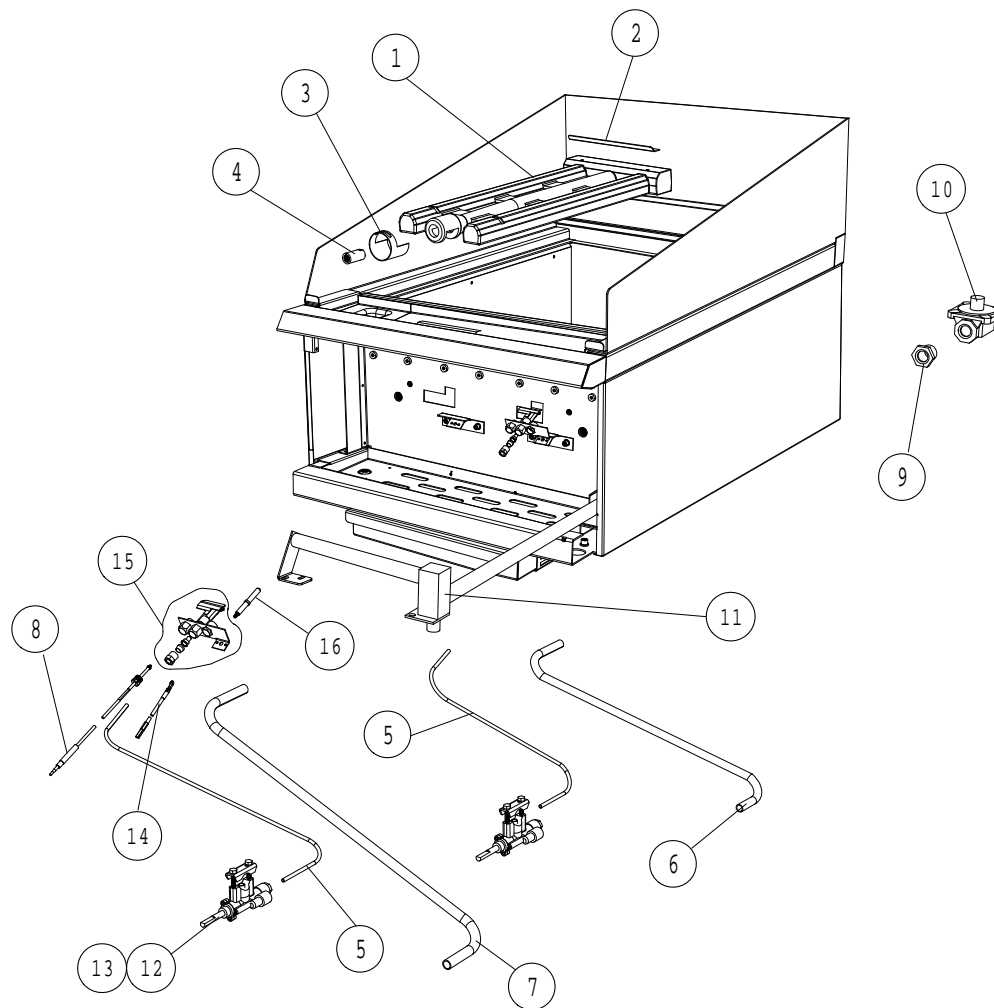
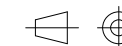


IF IN DOUBT ASK!!

DO NOT SCALE !!

First Angle Projection

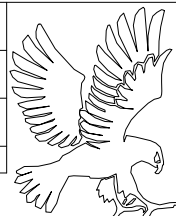


G2625 CONTROLS ASSEMBLY

PART No	SPARES No	DESCRIPTION
1	535010015	BURNER
2	536000033	BURNERSHIELD
3	531880785	AERATION SHROUD
4	530961130	INJECTOR ϕ 2.6
5	535010012	PIPE FLEXI ϕ 4 X 400
6	535010008	PIPE FLEXI ϕ 10 X 250
7	535010010	PIPE FLEXI ϕ 10 X 500
8	537883018	THERMOCOUPLE
9	535500031	REDUCER 3/4"
10	530960130	GOVERNOR 3/4"
11	535000006	FLOATRAIL ASSEMBLY
12	535010028	VALVE ASSEMBLY
13	536000038	VALVE ASSEMBLY
14	535010001	SPARK IGNITION LEAD
15	535010005	PILOT BURNER ASSY
16	537742004	ELECTRODE

All dimensions in millimetres, Tolerance- Linear $\pm 0.5\text{mm}$ Angular $\pm 0.5^\circ$ (or as stated). All sharp edges to be removed from sheet metal parts.

A	1159	PRODUCTION ISSUE		S.MOONEY	12/7/07
Issue	Mod No.	Alteration	Zone	Drawn by	Date



Drawn	S.MOONEY	Product	G2625 CHARGRILL	
Date	12/7/07	Title	G2625 SPARES DIAGRAM- CONTROLS	
Scale				
Matl.		Drawing Number	AD45365	Issue
No. off		Finish		A
Bin No.		Kraus No.	T111753	

No reproduction or publication of this drawing may be made and no article may be manufactured or assembled in accordance with this drawing without prior written consent. This prohibition is subject to any contract relating to this drawing. Rights reserved under the Copyright Act 1956 as amended by the Design Copyright Act 1988.

This part is common to the following units

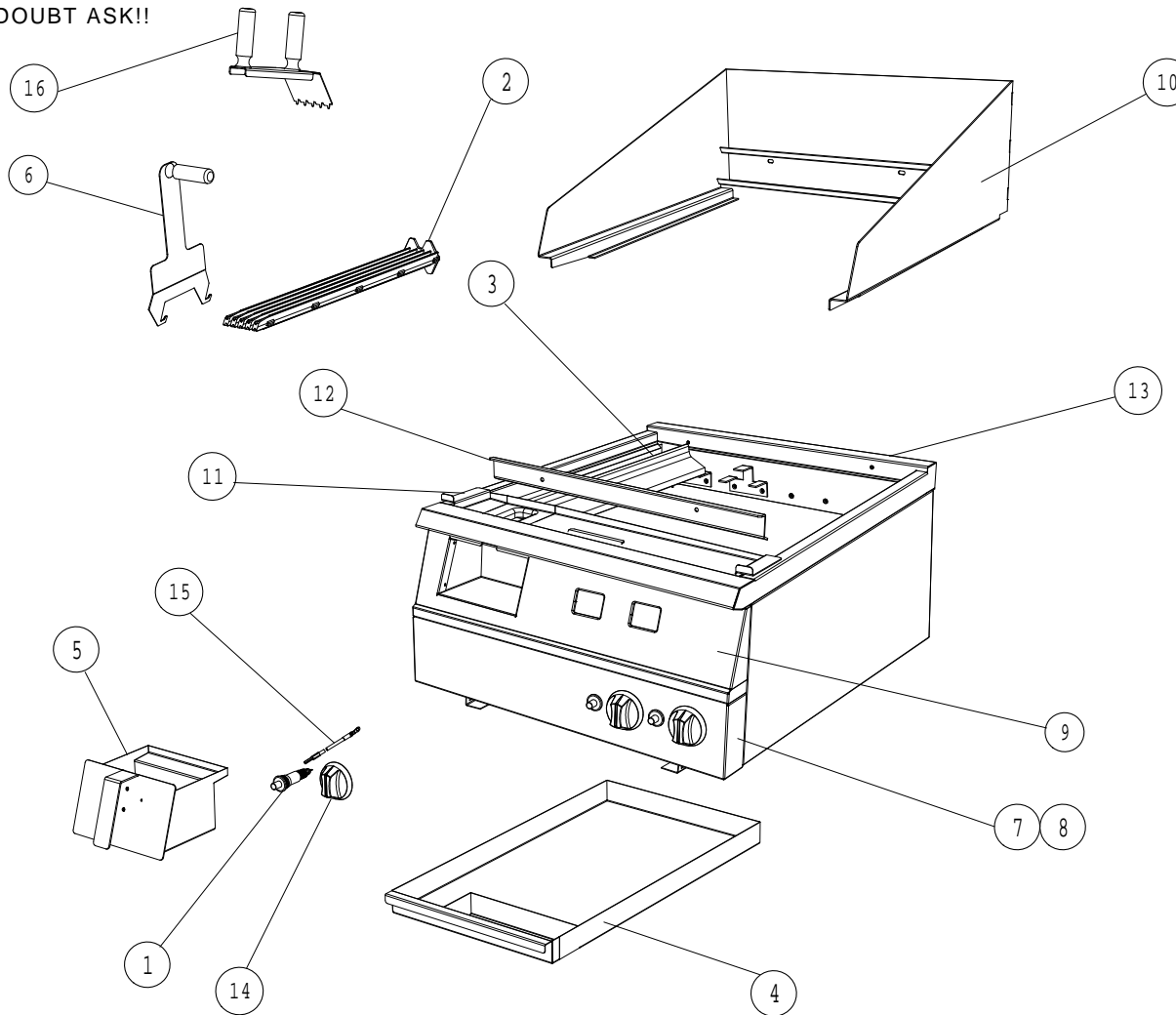
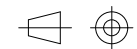
CLEARED FOR PRODUCTION

Falcon Foodservice Equipment. Wallace View Hillfoots Road Stirling Scotland

IF IN DOUBT ASK!!

DO NOT SCALE !!

First Angle Projection

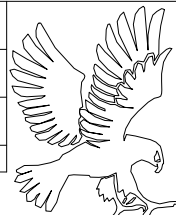


G2625 CONTROLS ASSEMBLY

PART No	SPARES No	DESCRIPTION
1	535010000	SPARK IGNITER
2	535010013	BRANDING GRID
3	535010014	BURNER BAFFLE
4	535000011	DRIP TRAY ASSEMBLY
5	535010020	FAT JUG ASSEMBLY
6	535010018	CHARGRILL LIFTING TOOL
7	535000000	LOWER FRONT FACIA (B)
8	536000012	LOWER FRONT FACIA
9	535000001	UPPER FRONT FACIA
10	535000002	SPLASHGUARD ASSEMBLY
11	535000003	SPILL TRAY ASSEMBLY
12	535000004	BRANDER SUPPORT ANGLE
13	535000005	HOB ASSEMBLY
14	536000021	CONTROL KNOB
15	535010002	IGNITER EARTH WIRE
16	536000046	SCRAPER

All dimensions in millimetres, Tolerance- Linear $\pm 0.5\text{mm}$ Angular $\pm 0.5^\circ$ (or as stated). All sharp edges to be removed from sheet metal parts.

A	1159	PRODUCTION ISSUE		S.MOONEY	11/7/07
G	Issue	Mod No.	Alteration	Zone	Drawn by



Drawn	S.MOONEY	Product	G2625 CHARGRILL	
Date	11/7/07	Title	G2625 SPARES DIAGRAM- FITMENTS	
Scale				
Matl.		Drawing Number	AD45364	Issue
No. off		Finish		A
Bin No.		Kraus No.	T111752	

No reproduction or publication of this drawing may be made and no article may be manufactured or assembled in accordance with this drawing without prior written consent. This prohibition is under any contract relating to this drawing. Rights reserved under the Copyright Act 1956 as amended by the Design Copyright Act 1988.

This part is common to the following units

CLEARED FOR PRODUCTION

Falcon Foodservice Equipment. Wallace View Hillfoots Road Stirling Scotland