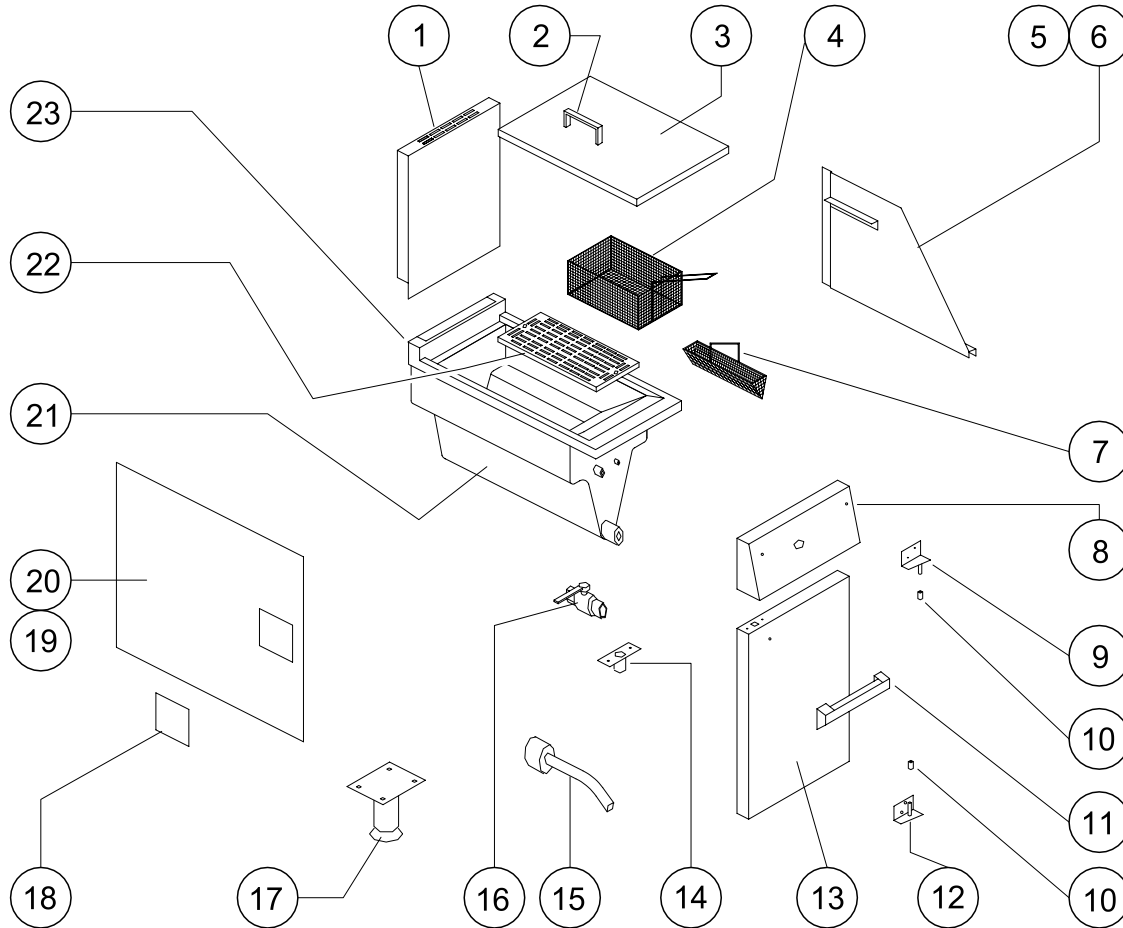




G1830 Mk2, G1860 Mk2 & G1865 FRYERS

G1830 Mk2 SPARES

FITMENTS



Item	Spares No.	Description
1.	531313010	Flue Uptake Assembly
2.	531313050	Dust Cover Handle
3.	537300070	Dust Cover c/w Handle
4.	531312010	Chip Basket
5.	531313210	Side Screen - RH
6.	531313211	Side Screen - LH
7.	537320220	Strainer
8.	537300080	Control Panel
9.	537320070	Door Hinge (Top)
10.	537320090	Friction Bush (Plastic)
11.	531303020	Door Handle

Item	Spares No.	Description
12.	537320080	Door Hinge (Bottom)
13.	531303072	Door Panel
14.	531313030	Door Catch
15.	534510070	Drain Tube Assembly
16.	534510060	Drain Valve
17.	531313080	Leg c/w Adjustable Foot
18.	534510040	Side Panel Plate
19.	537320060	Outer Side Panel - RH
20.	537320050	Outer Side Panel - LH
21.	537320010	Insulation
22.	537320020	Fish Grid
23.	537300060	Pan and Hob Assembly

Falcon Foodservice Equipment

HEAD OFFICE AND WORKS

PO Box 37, Foundry Loan, Larbert.
Stirlingshire. Scotland. FK5 4PL

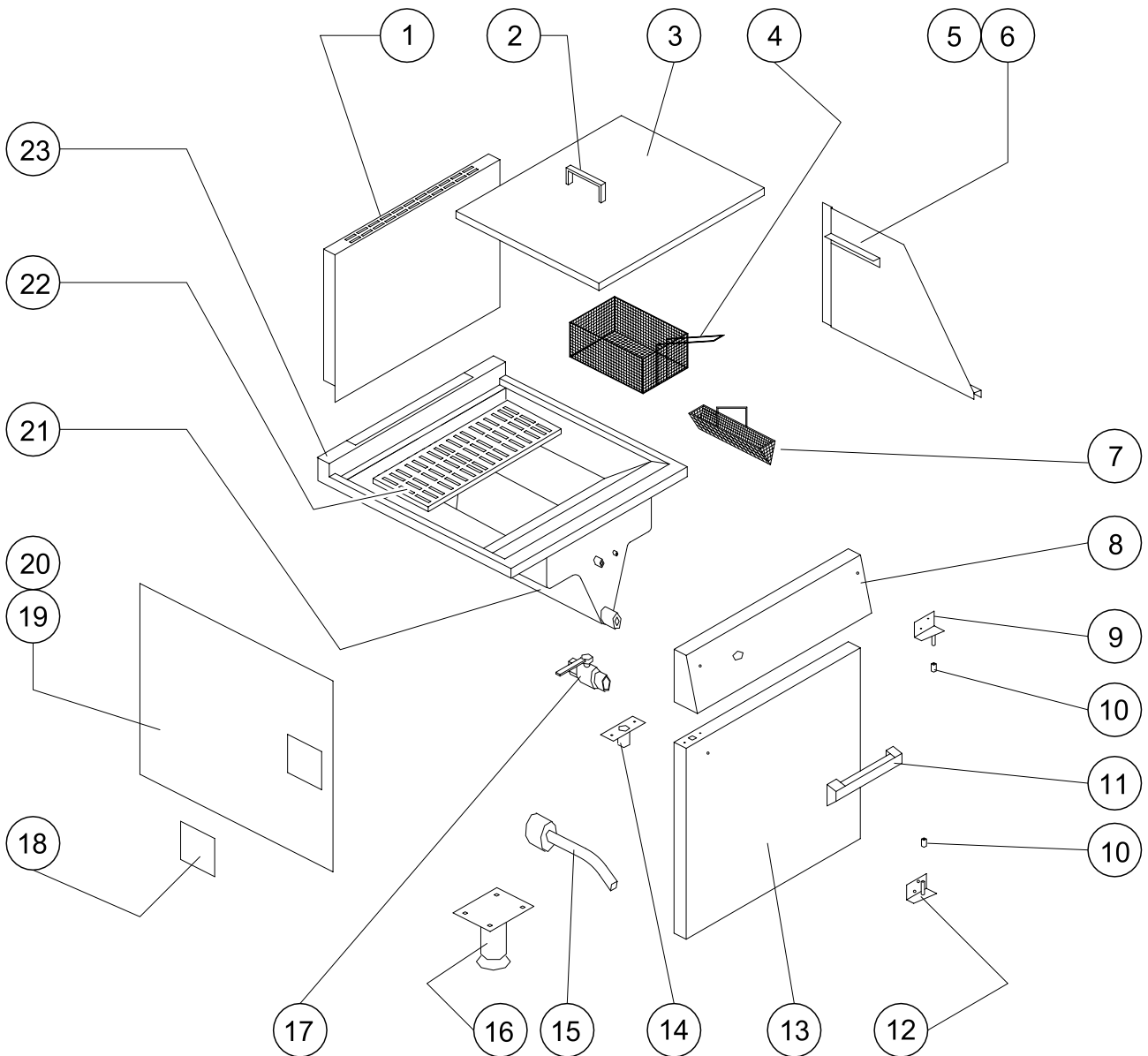
SERVICE LINE CONTACT -

PHONE - 01438 751 111 FAX - 01438 369 900

R3755 Ref. 1

G1860 Mk2 SPARES

FITMENTS

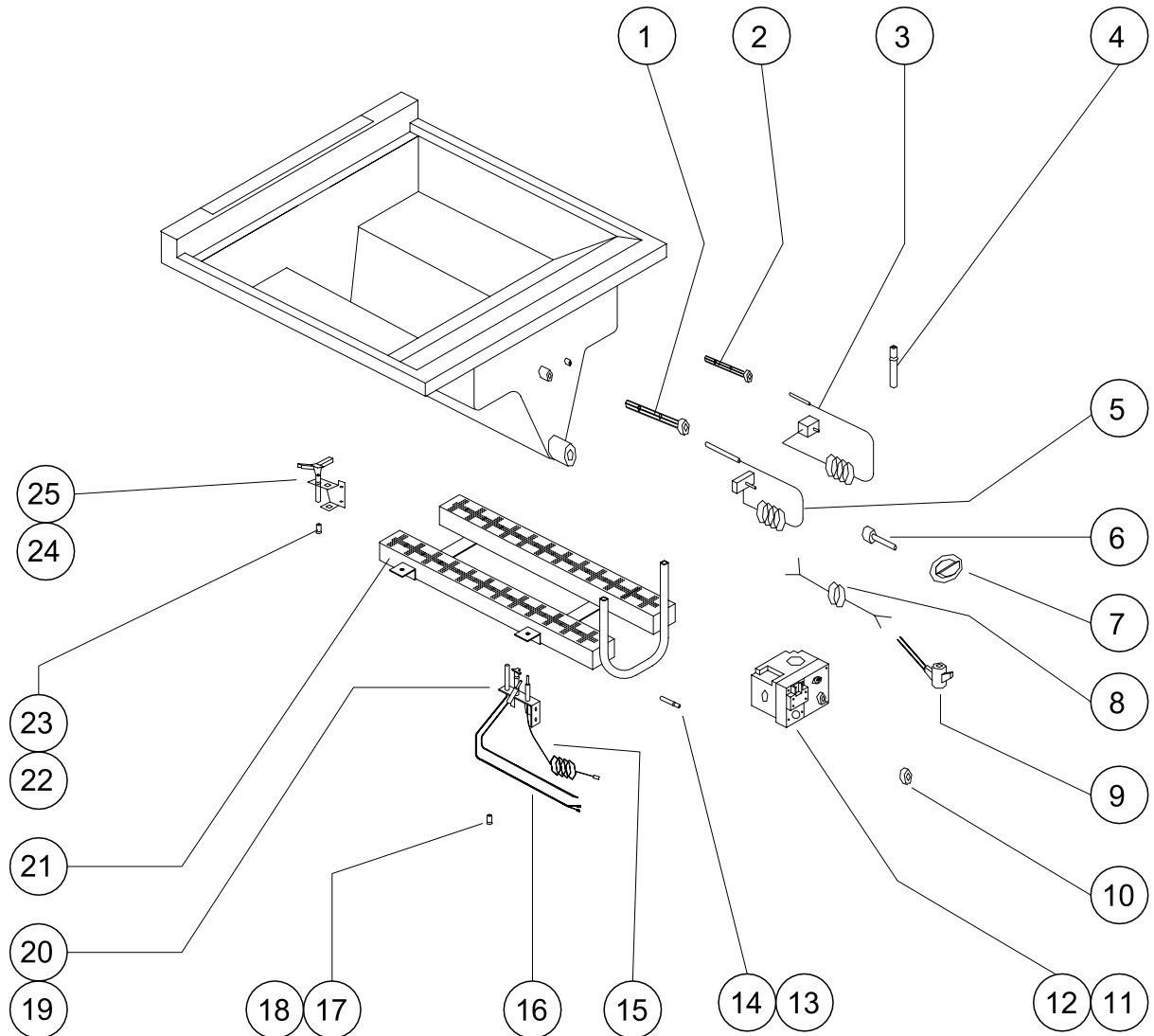


Item	Spares No.	Description
1.	531313090	Flue Uptake Assembly
2.	531313050	Dust Cover Handle
3.	537320030	Dust Cover c/w Handle
4.	531312010	Chip Basket
5.	531313210	Side Screen - RH
6.	531313211	Side Screen - LH
7.	537300220	Strainer
8.	537300120	Control Panel
9.	537320070	Door Hinge (Top)
10.	537320090	Friction Bush (Plastic)
11.	531313020	Door Handle

Item	Spares No.	Description
12.	537320080	Door Hinge (Bottom)
13.	531313072	Door Panel
14.	531313030	Door Catch
15.	534510070	Drain Tube Assembly
16.	531313080	Leg c/w Adjustable Foot
17.	534510060	Drain Valve
18.	534510040	Side Panel Plate
19.	537320060	Outer Side Panel - RH
20.	537320050	Outer Side Panel - LH
21.	537300100	Insulation
21.	537300110	Fish Grid
23.	537300090	Pan and Hob Assembly

G1860 Mk2 SPARES

CONTROLS



Item	Spares No.	Description
1.	537310040	Phial Guard (Operating T'stat)
2.	537310050	Phial Guard (Safety T'stat)
3.	537300060	Safety Thermostat
4.	537320200	Igniter
5.	537320120	Operating Thermostat
6.	531310101	Spindle Adaptor
7.	531300090	Knob for Operating T'stat
8.	537320190	Leads for Safety T'stat
9.	531134470	Interuptter
10.	531310130	On/Off Knob for MFC
11.	537320100	Multifunctional Control (Nat.)
12.	537320110	Multifunctional Control (Prop.)

Item	Spares No.	Description
13.	531690410	Injector (Natural Gas)
14.	531690415	Injector (Propane Gas)
15.	537320170	Thermocouple
16.	537320180	Thermopile
17.	537320240	Pilot Jet (Natural)
18.	537320245	Pilot Jet (Propane)
19.	537320160	Pilot Assembly (Natural)
20.	537320165	Pilot Assembly (Propane)
21.	537300130	Burner Assembly
22.	537320230	X Lighter Jet (Natural)
23.	537320235	X Lighter Jet (Propane)
24.	537320210	X Lighter Assembly (Natural)
25.	537320215	X Lighter Assembly (Propane)