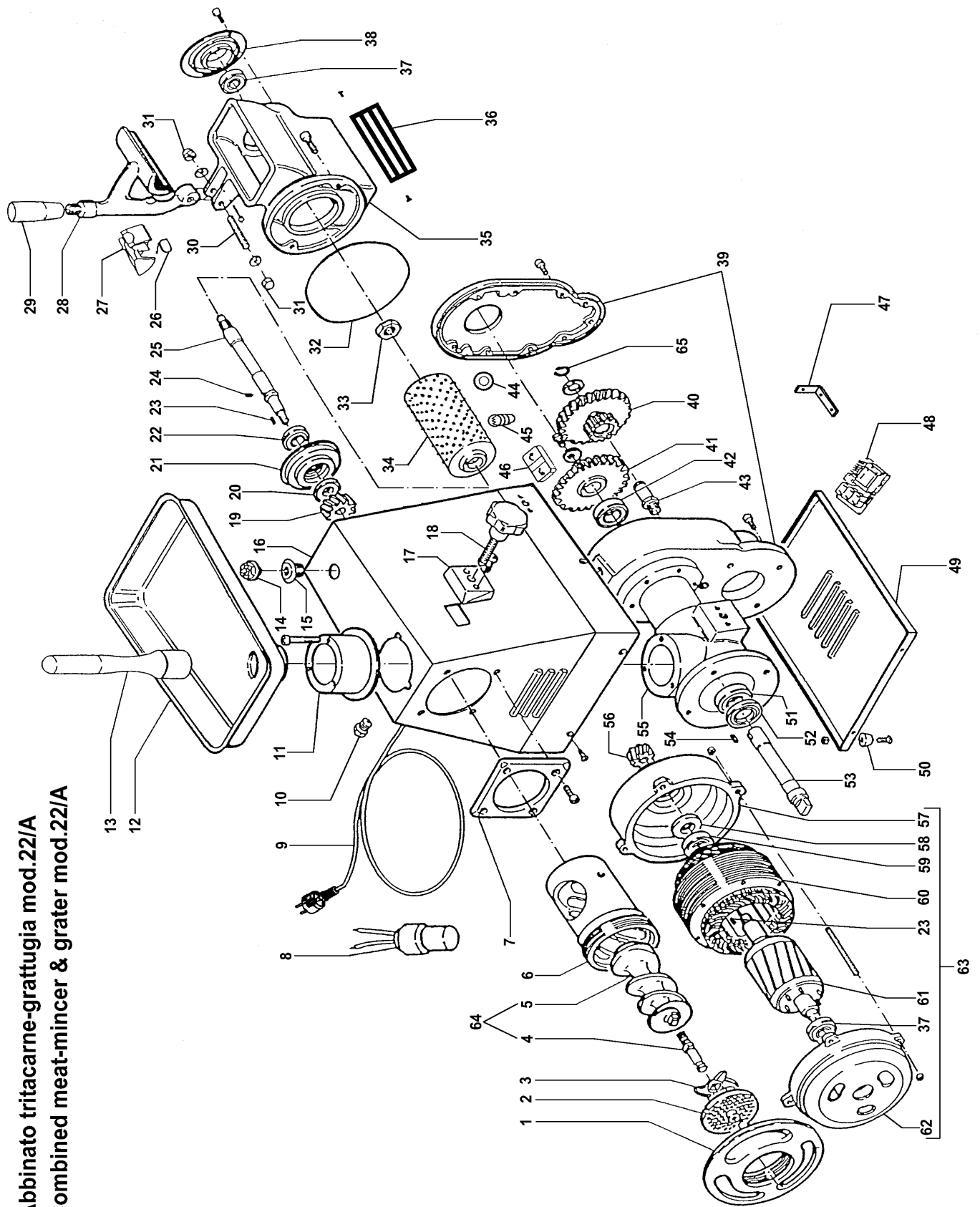


**Abbinato tritacarne-grattugia mod.22/A
 Combined meat-mincer & grater mod.22/A**



ABBINATO TRITACARNE-GRATTUGIA MOD.22/A COMBINED MEAT-MINCER & GRATER MOD.22/A

RIF.	CODICE / CODE	DIN - UNI	DESCRIZIONE / DESCRIPTION
1	SL0197		Ghiera inox / Stainless steel locking ring
1	SL0196	01/01/00 f.p.(*).	Ghiera alluminio / Aluminium locking ring
2	//////////		Coltello / Cutter
3	//////////		Piastra / Plate
4	SL0823		Perno / Pivot
4	SL0824		Perno (Unger) / Pivot (Unger)
5	SL0212		Coclea inox / Stainless steel screw shaft
5	SL0211	01/01/00 f.p.(*).	Coclea ghisa / Cast iron screw shaft
6	SL0214		Bocchettone inox / Stainless steel sleeve
6	SL0213	01/01/00 f.p.(*).	Bocchettone ghisa / Cast iron sleeve
6	SL0298		Bocchettone inox (Unger) / Stainless steel sleeve (Unger)
7	SL0215		Flangia / Flange
8	SL2311	25µF	Condensatore / Condenser
9	SL1841	3Ph+Gnd	Cavo elettrico trifase / Electric cable (triple-phase)
9	SL1671	1Ph+N+Gnd	Cavo elettrico monofase / Electric cable (single-phase)
10	SL1052	PG11	Pressacavo / Cable clamp
11	SL0195		Mozzo / Hub
12	SL0135		Tramoggia / Hopper
13	SL0134		Pestello / Pusher
14	SL0253		Tappo / Tap
15	SL0251		Raccordo / Nipple
16	SL0880		Carcassa / Housing
17	SL0249		Flangia / Flange
18	SL0248		Pomello / Knob
19	SL0259		Ingranaggio / Gear
20	SL0224	20x40x7	Paraolio / Oil seal
21	SL0261		Flangia / Flange
22	SL0223	6004 2RS	Cuscinetto / Bearing
23	SL0262	5x5x14	Linguetta / Key
24	SL0121	ø5x10	Spina cilindrica / Pin
25	SL0263		Albero / Shaft
26	SL0885		Microinterruttore / Microswitch
27	SL0650		Supporto / Support
28	SL0107		Pressore / Pusher
29	SL0106		Impugnatura / Grip
30	SL0258	M8x60	Prigioniero / Stud
31	SL0108	M8	Dado / Nut
32	SL1453		Anello / Ring
33	SL0257	M22x1,5	Dado / Nut
34	SA5600		Rullo / Cylinder
35	SL0254		Bocca / Casing
36	SL1452		Griglia / Grid
37	SL0131	6203 2RS	Cuscinetto / Bearing
38	SL0255		Coperchietto / Cover
39	SA5550		Gruppo scatola-coperchio / Box-cover (assembly)
40	SL0243		Ingranaggio / Gear
41	SL0242		Ingranaggio / Gear
42	SL0241	6005 2RS	Cuscinetto / Bearing
43	SL0240		Albero / Shaft
44	SL0945		Pulsante stop / Stop push button
45	SL1677	36V 2W	Lampadina / Bulb
46	SL1466		Pulsante inversione / Inversion push button
47	SL0932		Staffa / Bracket
48	SL0999		Scheda elettronica / Electronic card
49	SL0237		Fondo / Bottom
50	SL0235		Piedino / Foot
51	SL0233	6205 2RS	Cuscinetto / Bearing
52	SL0232	30x52x10	Paraolio / Oil seal
53	SL0230		Albero / Shaft
54	SL1211	8x7x12	Linguetta / Key
55	SL0239		Corpo / Casing
56	SL0225		Ingranaggio / Gear
57	SL0227		Calotta / Cap
58	SL0260	25x47x10	Paraolio / Oil seal
59	SL0202	6005 2RS	Cuscinetto / Bearing
60	SL0221	230-400V/3Ph/50Hz	Statore trifase / Triple-phase stator
60	SL0222	230V/1Ph/50Hz	Statore monofase / Single-phase stator
61	SA6800	230-400V/3Ph/50Hz	Rotore trifase / Triple-phase rotor
61	SA6900	230V/1Ph/50Hz	Rotore monofase / Single-phase rotor
62	SL0217		Calotta / Cap
63	SA9600	230-400V/3Ph/50Hz	Gruppo motore trifase / Triple-phase motor (assembly)
63	SA9700	230V/1Ph/50Hz	Gruppo motore monofase / Single-phase motor (assembly)
64	SA5500		Gruppo coclea inox/Stainless steel screw shaft (assembly)
64	SA5400	01/01/00 f.p.(*).	Gruppo coclea ghisa / Cast iron screw shaft (assembly)
64	SA5700		Gruppo coclea inox Unger/ Unger stainless steel screw shaft (assembly)
65	SL0017	ø17	Seeger Esterno / Spring Ring

(*): fuori produzione / out of production