

GLASSWASHER K 37

TABLE
KI4110

CODE	DESCRIPTION	CODE	DESCRIPTION
0010701	Drain elbow		
0010705/R	Pipe fitting d. 8		
0010706/A	Pressure switch		
0010707/1	0-90 TR2 thermostat		
0010708/L	Rapid timer 120"		
0010711/B	Fluor pilot lamp		
0010727	1,5m H2O drain liner		
0010786	40 Diam.M10X25 small black foot		
0010799	Shining product dosing device		
0011701/A	Stainless steel nut for floor drain		
0012525	Counter weight for small filter		
0013010	OR heating element gasket		
0013305	Drain elbow gasket		
00135076	Polystyrene coat K 37		
00135221	Right door rod		
00135221/A	Left door rod		
00135222	Beating door		
00135240	Handle door in plastic		
00135241	Ending of handle K		
00135252	Overflow K 37		
00135309A	Support component K 37		
00135600	2+2 instrument panel		
00135606	3+2 instrument panel		
00135905	Complete boiler		
00135911/D	Complete air-trap		
00137313A	Dorsal panel K 37		
00137317A	Lid for K 37		
00137318A	Lower door K 37		
00137910	Complete body K 37		
00137911	Complete door K 37		
00150401	Guide for bent rod		
00150402	Complete brass hook		
00150402/D	Block brass door hook		
0015058	Small shining product suction filter		
0015065	12 poles terminal board		
0015065/A	Cable fastener with screw		
0015098	Double solenoid valve		
0015146	Antijamming filter		
0015550	Conveyor safety thermostat		
0015811	Button fruit 16A bipolar		
0015812	Button fruit 16A		
0015813	Button fruit unip. 16A		
0015824	Green-orange cam		
0015834	Start switch		
0015835	Square start button		
0015854	Switch Q5 drain pump		
0015855	Switch Q5 yellow		
0015872	Switch Q7 green		
0015857	Switch Q5 green		
0016035/A	Short heating element		
0018206	2400W heating element		
00540000	/A Filter body d. 42		
00540002	Plastic filter for body d. 42		

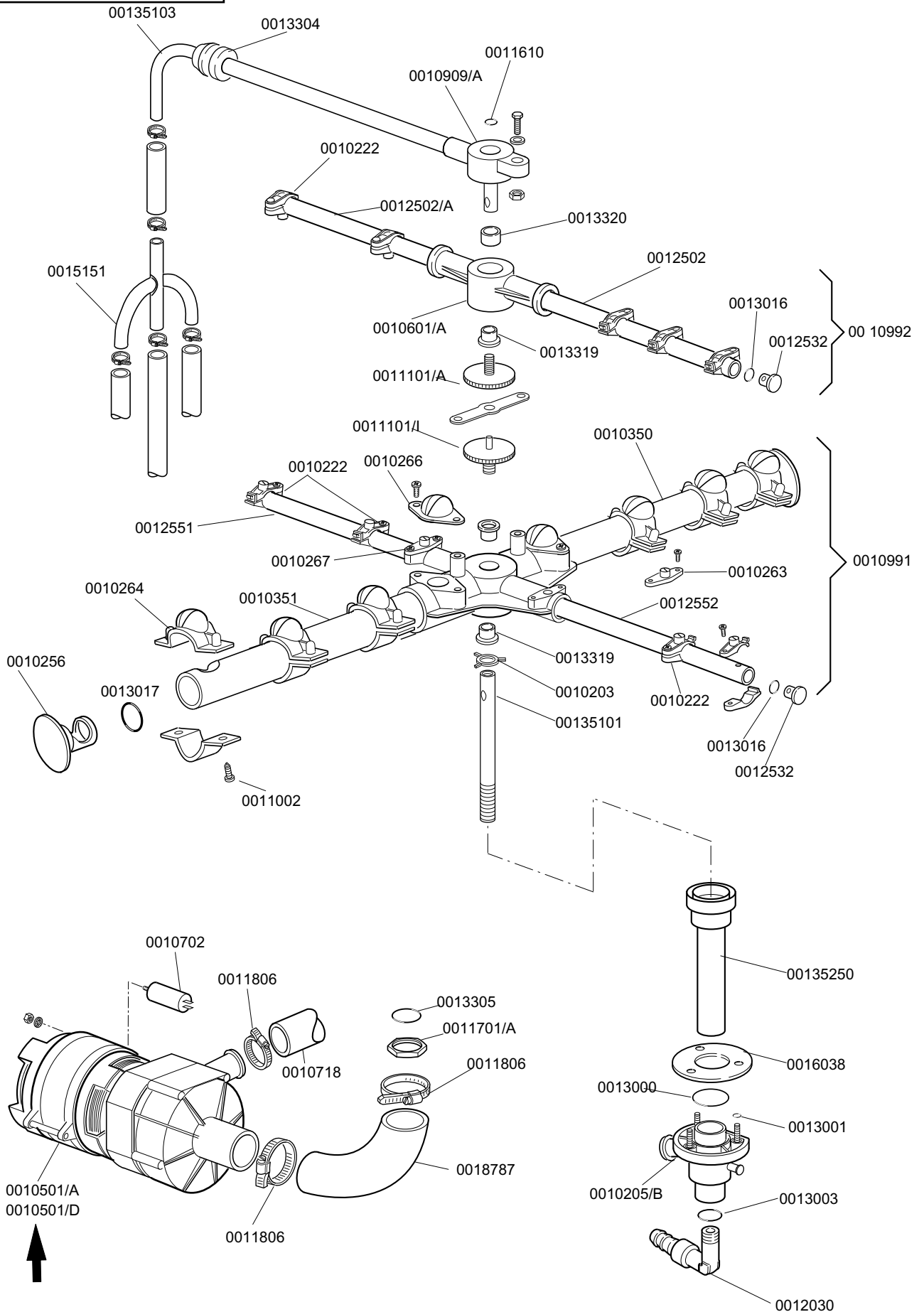
KROMO

**TABLE
KI4130**

**REV
01**

GLASSWASHER K 37

From serial number 99016315



KROMO

**TAVOLA
KI4131**

**REV
01**

K 37 L

