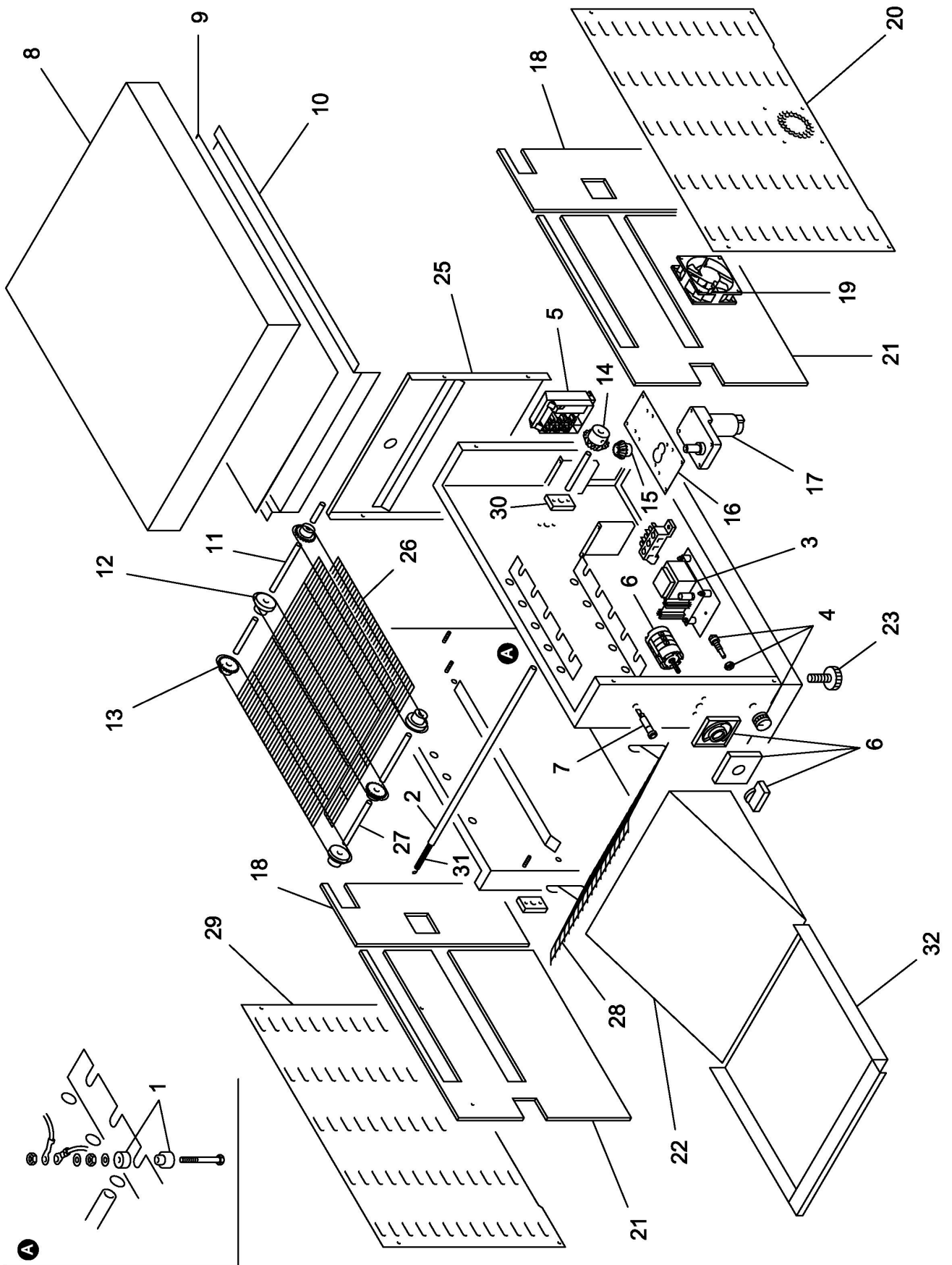


TOC-TOCS



TOC-TOCS

Pos. Ref.	Codice Code	Caratteristiche Features	Descrizione Description
1	CO1107		Distanziale Spacer
2	CO2030	● (TOCS)	Tubo Tube
2	CO1019	● (TOC)	Tubo Tube
3	CO1044	● 230V/1Ph/50-60Hz	Scheda elettronica Electronic card
4	CO1694	●	Potenziometro Trimmer
6	CO2399	(TOCS)	Selettore Selector
6	CO1045	(TOC)	Selettore Selector
7	CO1039		Lampada Lamp
8	CO4398	(TOCS)	Copertura Covering
8	CO1671	(TOC)	Copertura Covering
9	CO4399	(TOCS)	Pannello Panel
9	CO1672	(TOC)	Pannello Panel
10	CO4482	(TOCS)	Copertura Covering
10	CO1673	(TOC)	Copertura Covering
11	CO4483	(TOCS)	Perno Pivot
11	CO1674	(TOC)	Perno Pivot
12	CO1675		Boccola Bush
13	CO1676		Ingranaggio Gear
14	CO1677		Ingranaggio Gear
15	CO1678		Ingranaggio Gear
16	CO1679		Staffa Bracket
17	CO1680	230V/1Ph/50-60Hz	Motore Motor
18	CO4484	(TOCS)	Pannello Panel
18	CO1681	(TOC)	Pannello Panel
19	CO1682		Ventola Fan
20	CO4485	(TOCS)	Copertura Covering
20	CO1683	(TOC)	Copertura Covering
21	CO4486	(TOCS)	Pannello Panel
21	CO1684	(TOC)	Pannello Panel
22	CO1685	01/04/2004 f.p.(*) - (TOC)	Scivolo Chute
23	CO2495		Piedino Foot
24	CO4488	(TOCS)	Carcassa Housing
24	CO1687	(TOC)	Carcassa Housing
25	CO4489	(TOCS)	Copertura Covering
25	CO1688	(TOC)	Copertura Covering
26	CO4490	(TOCS)	Tappeto Mat
26	CO1689	(TOC)	Tappeto Mat
27	CO4491	(TOCS)	Perno Pivot
27	CO1690	(TOC)	Perno Pivot
28	CO4492	(TOCS)	Griglia Grill
28	CO1691	(TOC)	Griglia Grill
29	CO4493	(TOCS)	Copertura Covering
29	CO1692	(TOC)	Copertura Covering
30	CO1693		Staffa Bracket
31	CO2031	● 230V/1Ph/50-60Hz - (TOCS)	Resistenza Resistance
31	CO2880	● 01/04/2004 f.p.(*) - (TOCS)	Resistenza Resistance
31	CO4804	● 230V/1Ph/50-60Hz - (TOC)	Resistenza Resistance
31	CO1020	● 01/01/2005 f.p.(*) - (TOC)	Resistenza Resistance
32	CO4494	(TOCS)	Cassetto Tray

(*): fuori produzione / out of production

● : ricambio consigliato / spare part suggested