

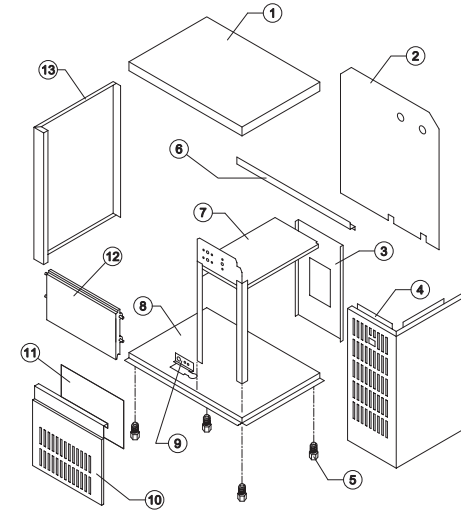


IC 30

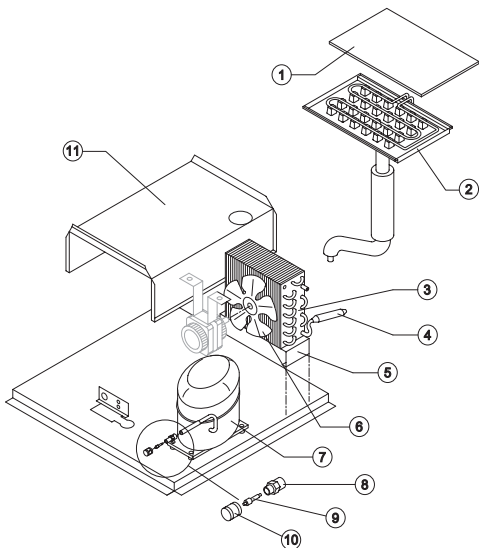
LIST OF THE EXPLODED VIEWS



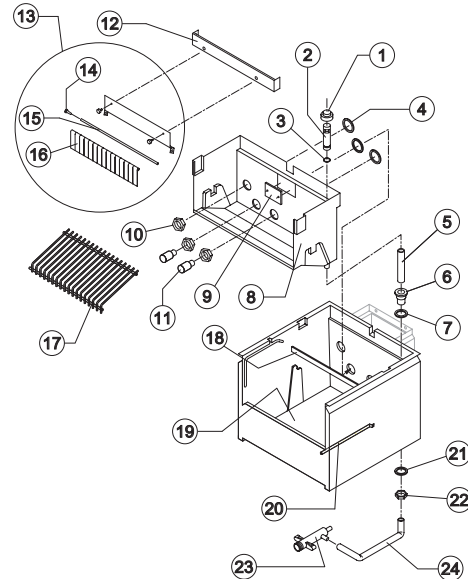
SHELL ASSY



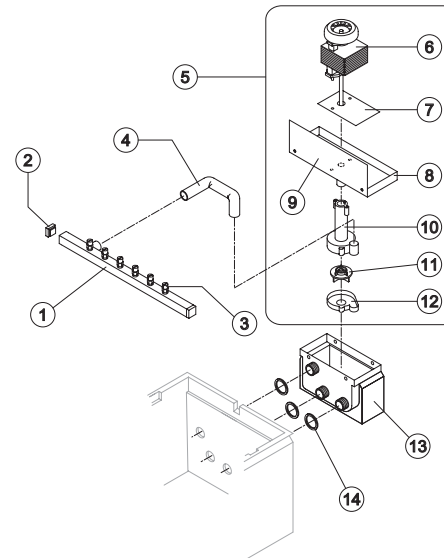
COOLING SYSTEM



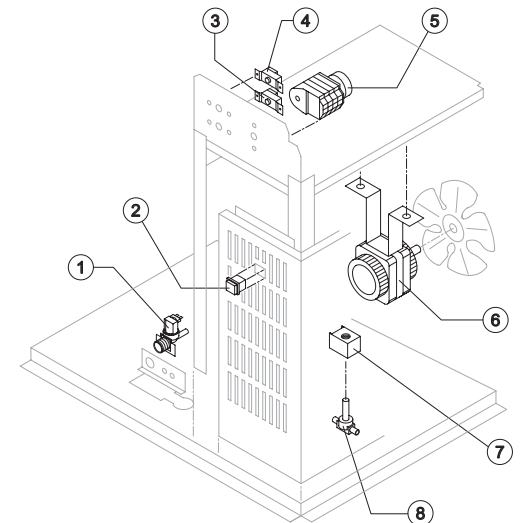
HYDRAULIC CIRCUIT



SPRAYER PUMP



ELECTRIC PARTS

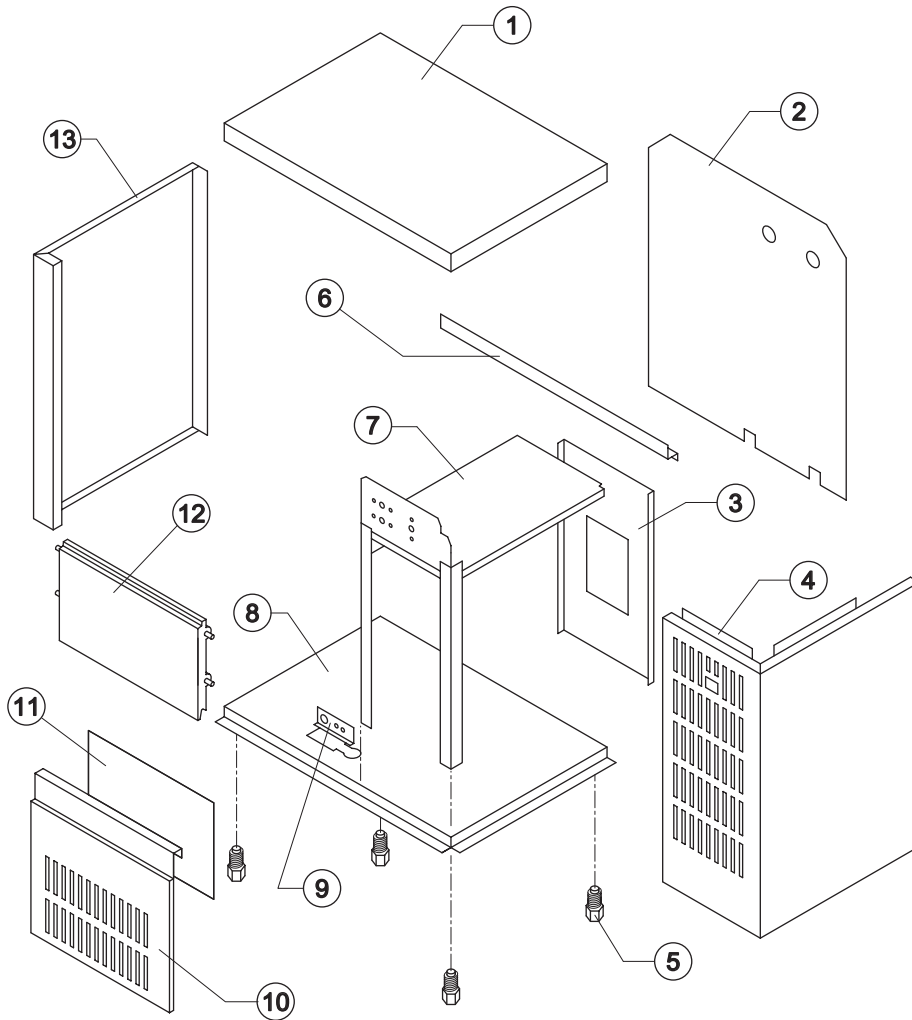


Rev. 1 - 12/6/2002



IC 30

SHELL ASSY



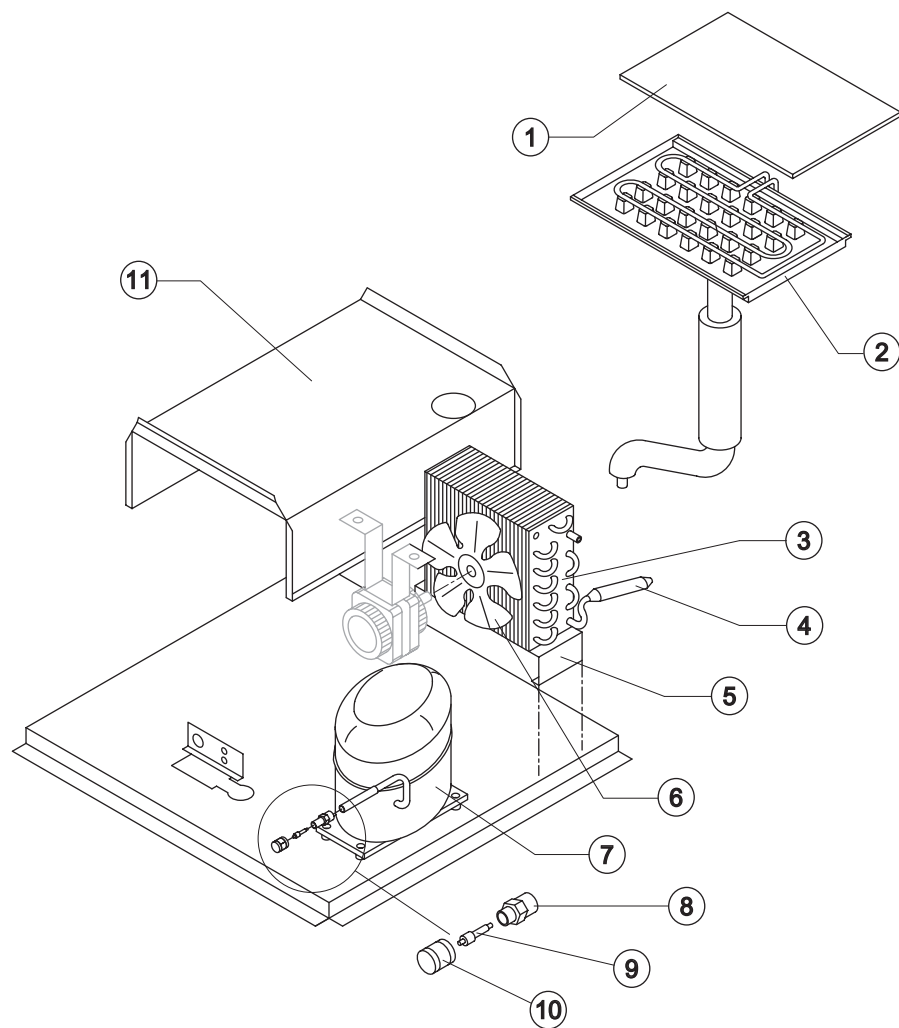
Ref.	Spare Description	Code
1	Top Assembly	C22305
2	Back Panel	21160
3	Back Plate	21158
4	Right & Front Panel (Fan Side)	22303
5	Foot	10017
6	Cross Fixing Panels	21162
7	Fan Motor & Electrical Components Support Plate	22302
8	Base Plate	21159
9	Support (Watervalue & Discharge)	21149
10	Front Panel	22306
11	Filtering Panel	18076
12	Door Assy	C10297
13	Left Side	22304

Rev. 1 - 12/6/2002



IC 30

COOLING SYSTEM



Ref.	Spare Description	Code
1	Evaporator Cover	10023
2	Evaporator	See Table
3	Air Condenser	20260
4	Molecular Drier	14009
5	Air Condenser Support	21148
6	Suction Impeller	See Table
7	Compressor	See Table
8	Vacuum-Charge Valve Body	14007
9	Vacuum-Charge Valve Device	14005
10	Vacuum-Charge Valve Plug	14006
11	Bin Support Saddle	21157

Ref. 2 - Evaporator

Kind of Cube	Code
18 g. (Standard)	D10046
33 g. (Big)	D10089
13 g. (Small)	D10113

Ref. 6 - Suction Impeller

Tension	Code
220/240V 50 Hz	10213
220/230V 60 Hz	10213
110/115V 60 Hz	20095

Ref. 7 - Compressor

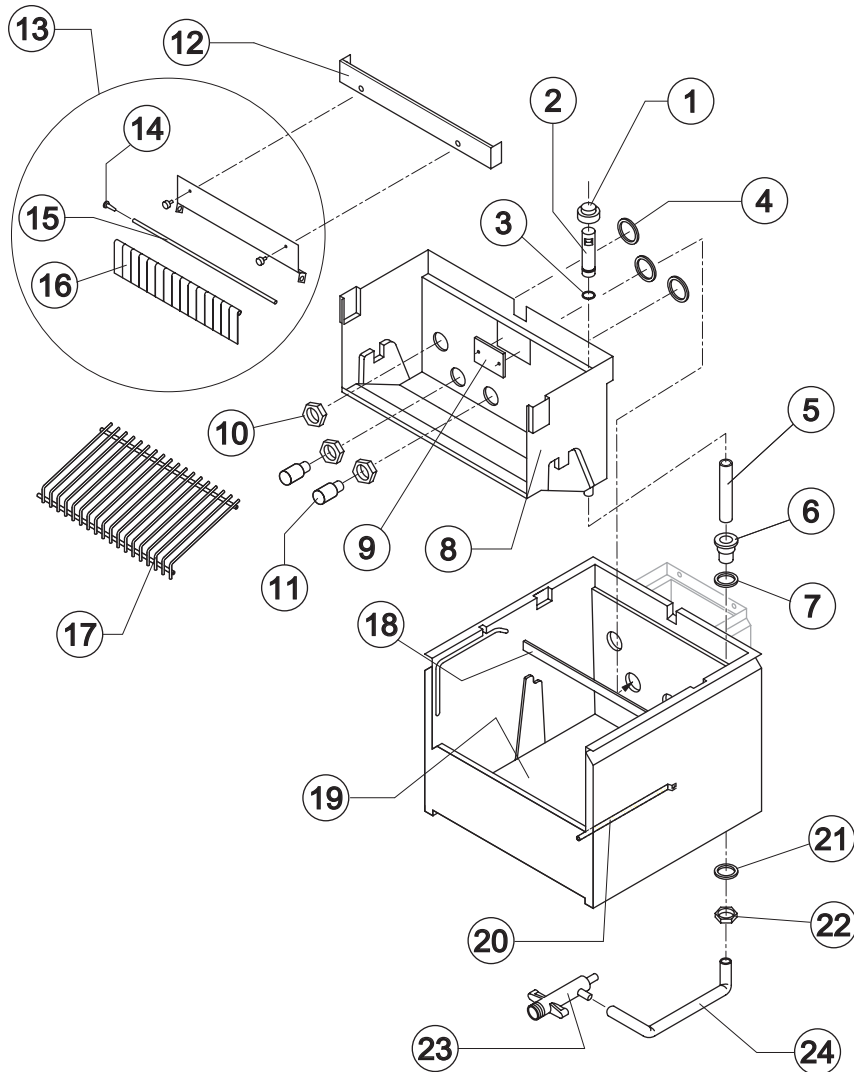
Tension	Refr. R404A	Refr. R22
220/240V 50 Hz	23441	23313
220/230V 60 Hz	23494	23345
110/115V 60 Hz	23446	23369

Rev. 1 - 12/6/2002



IC 30

HYDRAULIC CIRCUIT



Ref.	Spare Description	Code
1	Overflow Cap	10305
2	Overflow Pipe	10133
3	Or Gasket for Overflow Pipe	20233
4	Silicone Seal for Pump Basin	13069
5	Overflow Pipe	Current Version 13107
5	Overflow Pipe	Till s/n. 64147 13012
6	Plastic Nipple Water Outlet	10007
7	Silicone Gasket	13006
8	Inner Basin	10162
9	Slide Keep Plate	10009
10	Nut for Basin Connections	10159
11	Pump Suction Filter	20005
12	Evaporator Holder	See Table -
13	Flags Support Assy	C22035
14	Flags Rod Clip	10010
15	Flags Rod	12007
16	Flag	10005
17	Ice Cubes Slide	See Table -
18	Inner Basin Back	22013
19	Foamed Basin	See Table -
20	Bulbe Thermostat Tube	Current Version 20522
20	Bulbe Thermostat Tube	Till s/n. 94730 20017
21	Semirigid Polyethylene Gasket	13007
22	Bin Discharge Nut	10096
23	Discharges Manifold	10006
24	Water Discharge Pipe	13067

Ref. 12 - Evaporator Holder

Kind of Cube	Code
18 g. (Standard)	22009
33 g. (Big)	22009
13 g. (Small)	22229

Ref. 17 - Ice Cubes Slide

Kind of Cube	Code
18 g. (Standard)	D12008
33 g. (Big)	D12030
13 g. (Small)	D12038

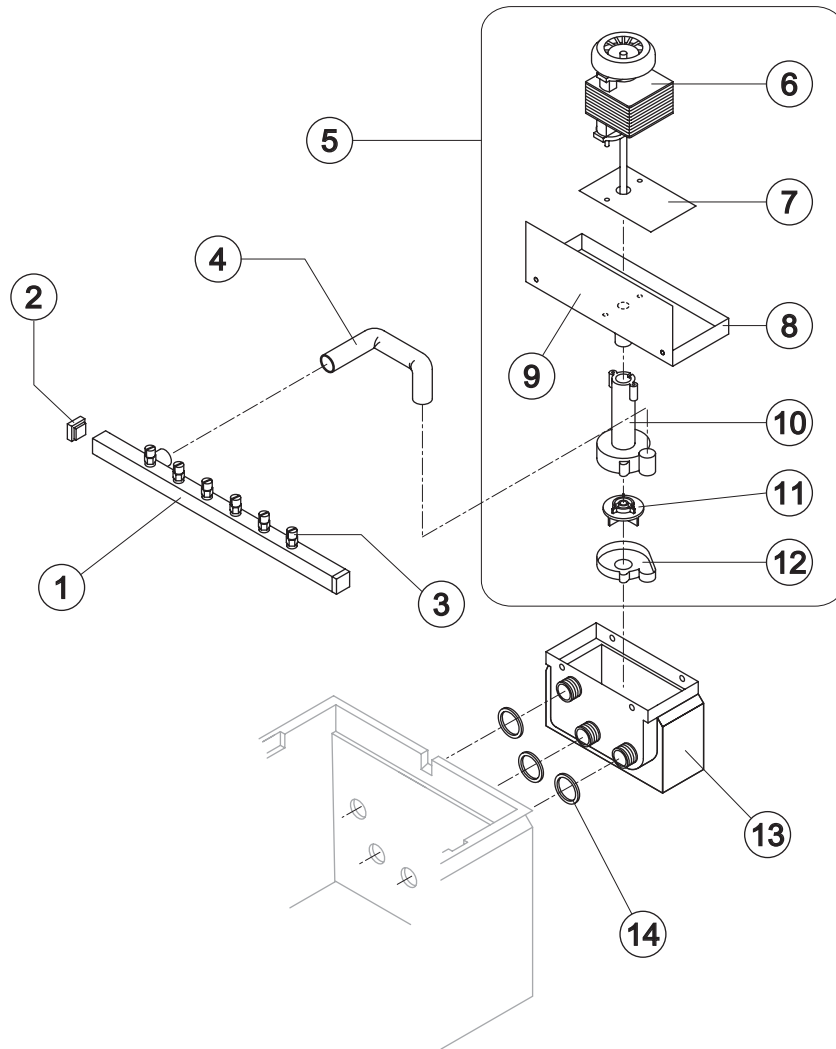
Ref. 19 - Foamed Basin

Kind of Cube	Code
18 g. (Standard)	C11122
33 g. (Big)	C11122
13 g. (Small)	C11123S



IC 30

SPRAYER PUMP



Ref.	Spare Description	Code
1	Sprayers Bar Assembly	See Table
2	Sprayers Bar Plug	10012
3	Sprayer	D20002
4	Pump Delivery Pipe	13068
5	Pump Assembly	See Table
6	Pump Motor	See Table
7	Heat Dissipator	22430
8	Pump Motor Holder	10161
9	Basin/Pump Fender case	22763
10	Pump Body	10065
11	Pump Impeller	10066
12	Diffuser	10067
13	Insulated Pump basin	C11048
14	Silicone Seal for Pump Basin	13069

Ref. 1 - Sprayers Bar Assembly

Kind of Cube	Code
18 g. (Standard)	C20573
33 g. (Big)	C20582
13 g. (Small)	C20571

Ref. 5 - Pump Assembly

Tension	Code
220/240V 50 Hz	C23254
220/230V 60 Hz	C23416
110/115V 60 Hz	C23417

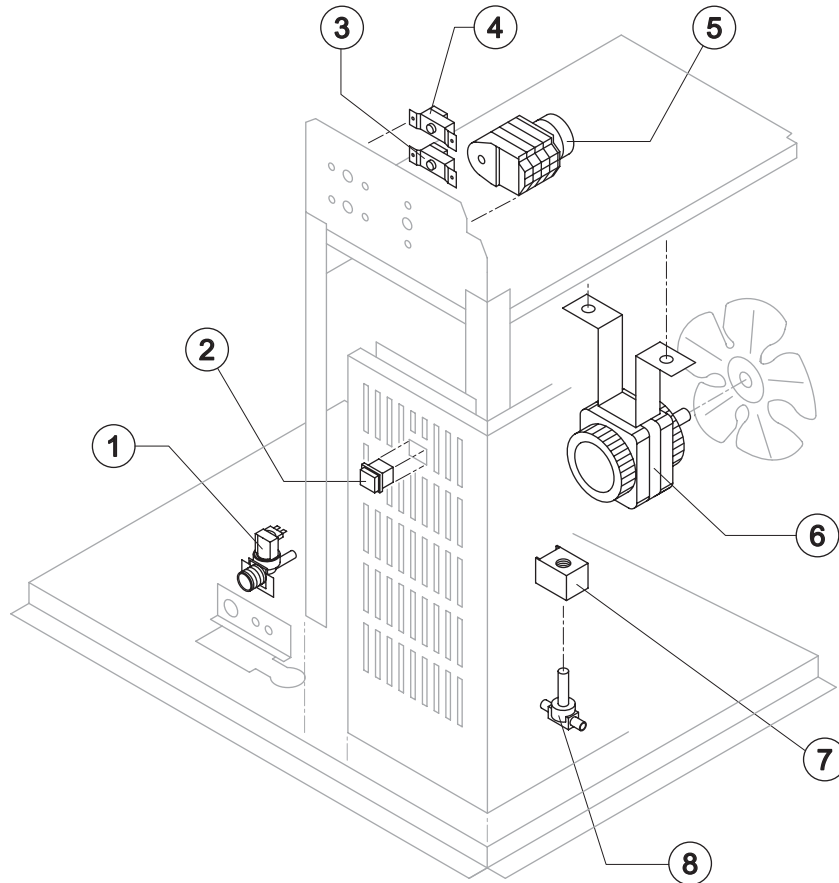
Ref. 6 - Pump Motor

Tension	Code
220/240V 50 Hz	23073
220/230V 60 Hz	23187
110/115V 60 Hz	23188

Rev. 1 - 12/6/2002



Rev. 1 - 12/6/2002



Ref.	Spare Description	Code
1	Inlet Watervalue 1 Way	See Table
2	Green Light Switch	23327
3	Evaporator Thermostat	23591
4	Bin Thermostat	23005
5	Timer	See Table
6	Fan Motor	See Table
7	Hot Gas Coil	See Table
8	Hot Gas Valve Body	20410

Ref. 1 - Inlet Watervalue 1 Way

Tension	Code
220/240V 50 Hz	23300
220/230V 60 Hz	23300
110/115V 60 Hz	23415

Ref. 6 - Fan Motor

Tension	Code
220/240V 50 Hz	23037
220/230V 60 Hz	23037
110/115V 60 Hz	23265

Ref. 5 - Timer

Tension	18g Cube	33g Cube	13g Cube
220/240V 50 Hz	23222	23248	23247
220/230V 60 Hz	23248	23396	23247
110/115V 60 Hz	23259	23397	23258

Ref. 7 - Hot Gas Coil

Tension	Code
220/240V 50 Hz	23091
220/230V 60 Hz	23091
110/115V 60 Hz	23256